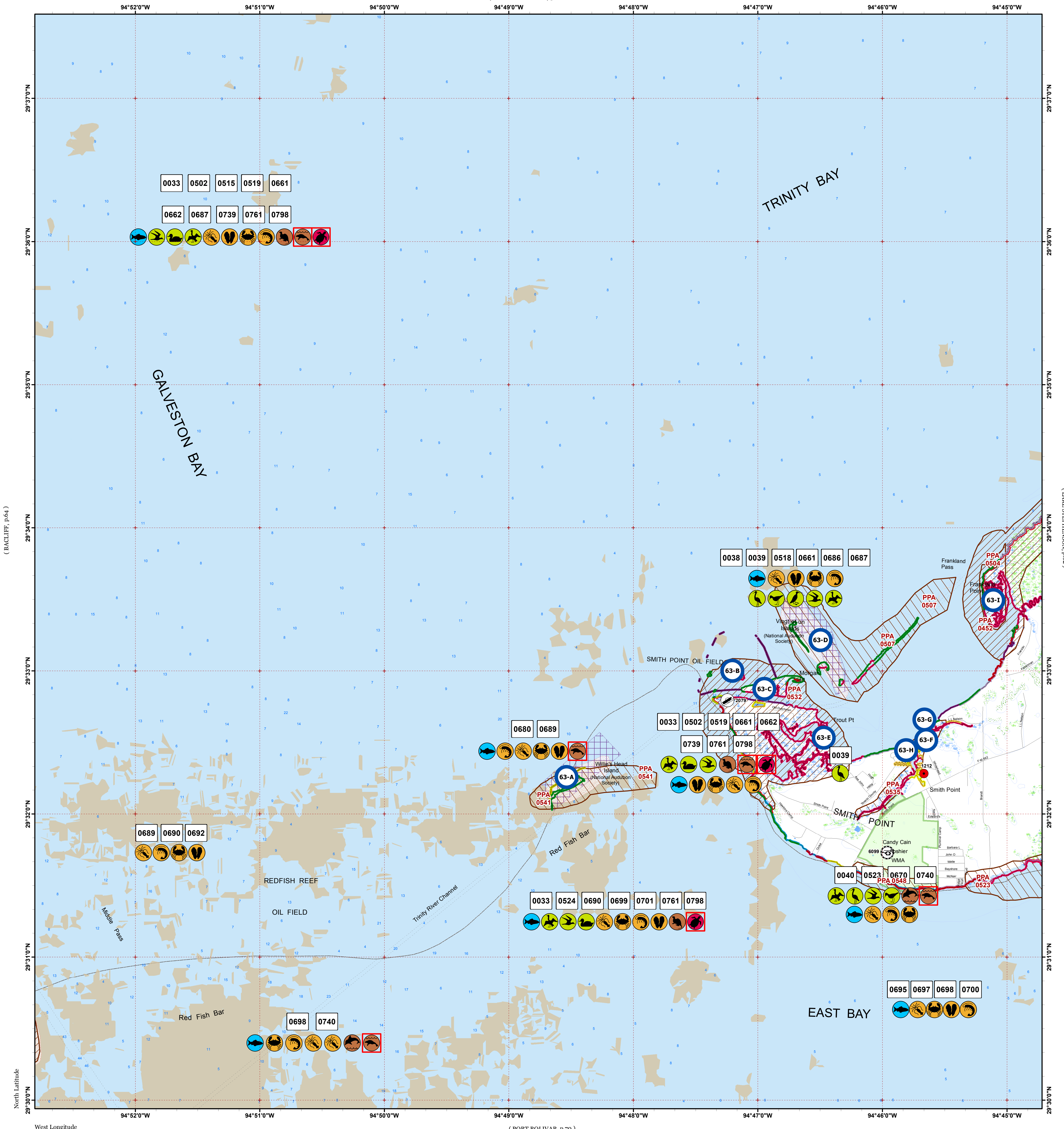


SMITH POINT

(UMBRELLA POINT, p.52)

Click Here or Scroll Down for Associated Map Data

Click on the Geographic Response Plan Target to View the ICS Form



(BACLIFF, p.64)

(LAKE STEPHENS, p.67)

North Latitude

West Longitude

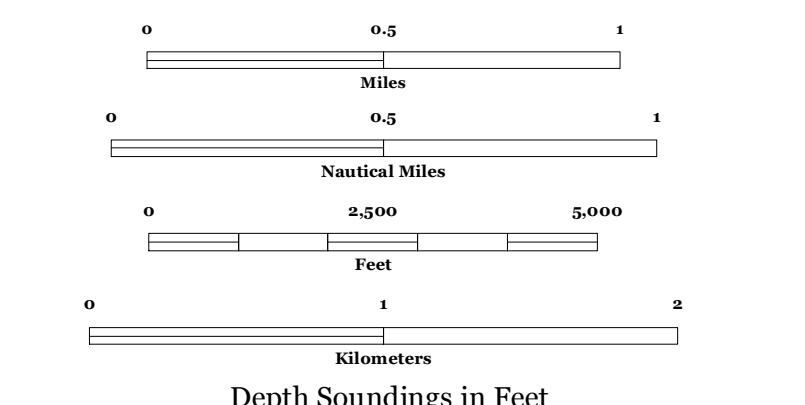
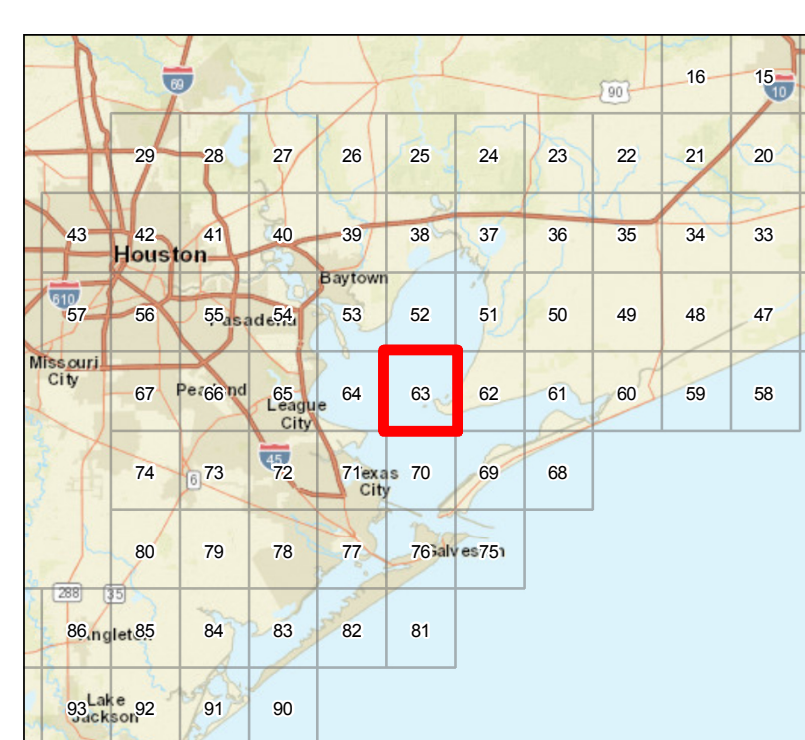
(PORT BOLIVAR, p.70)



Oil Spill Planning and Response Atlas

2016

The Texas General Land Office makes no representations or warranties regarding the accuracy or completeness of the information depicted on this map or the data from which it was produced. This map is not suitable for navigational purposes and does not purport to depict boundaries of private and public land.



- ### Human Use Features
- Boat Ramp
 - Facility
 - Helipoint
 - Geographic Response Plan

- ### Map Base Layers
- Road
 - GIWW
 - Audubon Sanctuaries
 - State Parks/WMA's
 - Oysters
 - Bays
 - Salt and Brackish Marshes
 - Beach or Tidal Flat
 - Freshwater Marshes
 - Swamps and Flooded Woodlands
 - Willow Thickets
 - Lake / Pond
 - County Boundary

- ### Priority Protection Areas
- HIGH
 - MEDIUM

- ### Species Icons Within Map Quad
- Turtle T/E
 - Benthic Marine
 - Bivalve
 - Cephalopod
 - Crab
 - Shrimp
 - Fish
 - Dolphin
 - Mammal T/E
 - Small Mammal
 - Diving Bird
 - Gull/Tern
 - Pelagic Bird
 - Shorebird
 - Wading
 - Waterfowl

- ### ENVIRONMENTAL SENSITIVITY INDEX
- 10D Mangroves and Woody Vegetation
 - 10C Freshwater Swamps
 - 10B Freshwater Marshes
 - 10A Salt and Brackish Water Marshes
 - 9 Sheltered Tidal Flats
 - 8C Sheltered Rocky/Karst Shores
 - 8D Sheltered Scarp
 - 8B Sheltered Riprap Structures
 - 8A Sheltered Solid Manmade Structures
 - 7 Exposed Tidal Flats
 - 6B Exposed Riprap Structures
 - 6A Gravel or Shell Beaches
 - 5 Mixed Sand and Gravel or Shell Beaches
 - 4 Coarse-Grained Sand Beaches
 - 3B Scrap and Steep Slopes in Sand
 - 3A Fine-Grained Sand Beaches
 - 2B Wave-Cut Clay Platforms
 - 2A Scrap and Steep Slopes in Clay
 - 1 Exposed Walls and Other Solid Structures

Quadrant: SMITH POINT

Map # :63

Biological Information for this quadrant represents known concentration areas of occurrence.

Habitat Priority Protection Areas

PPA ID	PRIORITY	POLY DESCRIPTION	BIRDS RANK	BIRDS DESCRIPTION	FISH RANK	FISH DESCRIPTION	WETLANDS RANK	WETLANDS DESCRIPTION
PPA0452	HIGH	Gordy Marsh complex, Lone Oak Bayou	HIGH	Wintering waterfowl, year-round feeding area for wading birds	HIGH	Important nursery for shrimp, fish; recreational fishing	HIGH	Large area of marsh
PPA0504	HIGH	Frankland Point			MEDIUM	Nursery	HIGH	Extensive smooth cordgrass marsh
PPA0507	MEDIUM	Vingt-et-un Islands	HIGH	Rookery (TCWS 600-260) for wading birds, terns, cormorants	HIGH	Recreational fishing area		
PPA0523	MEDIUM	Willow Marsh	MEDIUM				HIGH	
PPA0532	HIGH	Smith Point marsh	HIGH	Rails (including black rail), wading birds	HIGH	Nursery	HIGH	Extensive smooth cordgrass marsh
PPA0535	MEDIUM	Marsh in slough in town of Smith Point			HIGH	Nursery		
PPA0541	MEDIUM	Smith Point Island	HIGH	Rookery (600-261) for all species of wading birds and terns, skimmer, cormorant, gulls		High concentrations of oyster reefs throughout adjacent bays; fishing		
PPA0548	MEDIUM	South shore of Smith Point	MEDIUM				MEDIUM	Long fringe of smooth cordgrass along shore; inland (Candy Abshier WMA) contains marsh (sundew), bird habitat

Biological Resources

Bird

RARNUM	NAME	S	F	T	E	CONC	J	F	M	A	M	J	J	A	S	O	N	D	Nesting	Migrating	Molting
0033	Cormorants					-	X	X	X	X	X	X	X	X	X	X	X	X	-	-	-
	Diving birds					-	X	X	X	X	X	X	X	X	X	X	X	X	-	-	-
	Grebes					-	X	X	X	X	X	X			X	X	X	X	-	-	-
	Loons					-	X	X	X	X	X				X	X	X		-	-	-
	Pelicans					-	X	X	X	X	X	X	X	X	X	X	X	X	-	-	-
	Black skimmer					-	X	X	X	X	X	X	X	X	X	X	X	X	-	-	-
	Gulls					-	X	X	X	X	X	X	X	X	X	X	X	X	-	-	-
	Terns					-	X	X	X	X	X	X	X	X	X	X	X	X	-	-	-
	Diving ducks					-	X	X	X	X	X					X	X	X	-	-	-
0038	American white pelican					HIGH	X	X	X							X	X	X	-	-	-
	Brown pelican					HIGH	X	X	X	X	X	X	X	X	X	X	X	X	-	-	-
	Cormorants					HIGH	X	X	X	X	X	X	X	X	X	X	X	X	-	-	-
	Gulls					HIGH	X	X	X	X	X	X	X	X	X	X	X	X	-	-	-
	Terns					HIGH	X	X	X	X	X	X	X	X	X	X	X	X	-	-	-
	Magnificent frigatebird					HIGH					X	X	X	X	X	X	X		-	-	-
	Shorebirds					HIGH	X	X	X	X	X		X	X	X	X	X	X	-	-	-
Wading birds					HIGH	X	X	X	X	X	X	X	X	X	X	X	X	-	-	-	
0039	Black rail					-	X	X	X	X	X	X	X	X	X	X	X	X	-	-	-
	Marsh birds					-	X	X	X	X	X	X	X	X	X	X	X	X	-	-	-
	Wading birds					-	X	X	X	X	X	X	X	X	X	X	X	X	-	-	-
0040	Pelicans					-	X	X	X	X	X	X	X	X	X	X	X	X	-	-	-
	Gulls					-	X	X	X	X	X	X	X	X	X	X	X	X	-	-	-
	Shorebirds					-	X	X	X	X	X		X	X	X	X	X	X	-	-	-
	Wading birds					-	X	X	X	X	X	X	X	X	X	X	X	X	-	-	-

Fish

RARNUM	NAME	S	F	T	E	CONC	J	F	M	A	M	J	J	A	S	O	N	D	Spawning	Eggs	Larvae	Juveniles	Adults	
0502	Gizzard shad					COMMON	X	X	X	X	X	X	X	X	X	X	X	X	-	-	-	-	JAN-DEC	
	Atlantic croaker					HIGHLY-ABUNDANT	X	X	X	X	X	X	X	X	X	X	X	X	-	-	JAN-JUN	JAN-DEC	JAN-DEC	
	Atlantic sharpnose shark					-			X	X	X	X	X	X	X	X			JUN-JUN	MAY-JUN	JUN-OCT	-	APR-OCT	
	Bay anchovy					ABUNDANT	X	X	X	X	X	X	X	X	X	X	X	X	MAR-NOV	MAR-NOV	MAR-NOV	FEB-NOV	JAN-DEC	
	Black drum					COMMON	X	X	X	X	X	X	X	X	X	X	X	X	-	-	-	JAN-DEC	JAN-DEC	
	Bull shark					ABUNDANT	X	X	X	X	X	X	X	X	X	X	X	X	-	MAY-AUG	MAY-AUG	APR-NOV	JAN-DEC	
	Gafftopsail catfish					COMMON			X	X	X	X	X	X	X	X			APR-MAY	-	-	APR-OCT	APR-OCT	
	Gulf menhaden					HIGHLY-ABUNDANT	X	X	X	X	X	X	X	X	X	X	X	X	X	-	-	-	JAN-DEC	APR-DEC
	Hardhead catfish					ABUNDANT	X	X	X	X	X	X	X	X	X	X	X	X	MAY-AUG	MAY-SEP	MAY-SEP	JUN-OCT	JAN-DEC	
	Pinfish					COMMON			X	X	X	X	X	X	X				-	-	-	MAR-SEP	-	
	Red drum					COMMON	X	X	X	X	X	X	X	X	X	X	X	X	X	-	-	-	JAN-DEC	JAN-DEC
	Sand seatrout					COMMON	X	X	X	X	X	X	X	X	X	X	X	X	X	-	-	-	JAN-DEC	JAN-DEC
	Sheepshead					COMMON	X	X	X	X	X	X	X	X	X	X	X	X	X	-	-	-	JUN-MAR*	JAN-DEC
	Southern flounder					ABUNDANT	X	X	X	X	X	X	X	X	X	X	X	X	X	-	-	-	JAN-DEC	JAN-DEC
	Southern kingfish					COMMON							X	X	X	X			-	-	-	-	AUG-NOV	-
	Spot					HIGHLY-ABUNDANT	X	X	X	X	X	X	X	X	X	X	X	X	X	-	-	-	MAR-NOV	JAN-DEC
	Spotted seatrout					COMMON	X	X	X	X	X	X	X	X	X	X	X	X	X	-	-	MAR-JUL	AUG-NOV	JAN-DEC
	Striped mullet					COMMON	X	X	X	X	X	X	X	X	X	X	X	X	X	-	-	-	JAN-DEC	JAN-DEC
	Tarpon					RARE			X	X	X	X	X	X	X	X	X	X		-	-	-	MAR-NOV	-
	White mullet					COMMON			X	X	X	X	X	X	X					-	-	-	APR-OCT	-
	Gulf killifish					RARE	X	X	X	X	X	X	X	X	X	X	X	X	X	MAR-SEP	MAR-SEP	MAR-OCT	JAN-DEC	JAN-DEC
	Silver perch					RARE	X	X	X	X	X	X	X	X	X	X	X	X	X	MAY-SEP	MAY-SEP	MAY-SEP	OCT-OCT	JAN-DEC
	Silversides					COMMON	X	X	X	X	X	X	X	X	X	X	X	X	X	MAR-AUG	MAR-AUG	MAR-AUG	JAN-DEC	JAN-DEC
Alligator gar					COMMON	X	X	X	X	X	X	X	X	X	X	X	X	X	-	-	-	JAN-DEC	JAN-DEC	
Blue catfish					COMMON	X	X	X	X	X	X	X	X	X	X	X	X	X	-	-	-	JAN-DEC	JAN-DEC	
Smallmouth buffalo					-	X	X	X	X	X	X	X	X	X	X	X	X	X	-	-	-	-	JAN-DEC	
Spotted gar					COMMON	X	X	X	X	X	X	X	X	X	X	X	X	X	APR-MAY	APR-MAY	-	JAN-DEC	JAN-DEC	
Bay whiff					ABUNDANT	X	X	X	X	X	X	X	X	X	X	X	X	X	-	-	-	MAY-AUG	MAY-AUG	

Invertebrate

RARNUM	NAME	S F	T E	CONC	J	F	M	A	M	J	J	A	S	O	N	D	Spawning	Eggs	Larvae	Juveniles	Adults
	Lesser blue crab			COMMON				X	X	X	X	X	X	X	X		-	-	-	APR-OCT	APR-NOV
	Atlantic seabob shrimp			RARE									X	X			-	-	-	-	SEP-OCT
	Brown shrimp			ABUNDANT		X	X	X	X	X	X	X	X	X	X		-	-	FEB-APR	APR-NOV	-
	Grass shrimp			ABUNDANT	X	X	X	X	X	X	X	X	X	X	X	X	JAN-DEC	JAN-DEC	JAN-DEC	JAN-DEC	JAN-DEC
	White shrimp			HIGHLY-ABUNDANT	X	X	X	X	X	X	X	X	X	X	X	X	-	-	MAY-OCT	MAY-DEC	JAN-DEC
0697	Eastern oyster			LOW	X	X	X	X	X	X	X	X	X	X	X	X	MAR-DEC	MAR-DEC	-	-	JAN-DEC
	Brief squid			COMMON			X	X	X	X	X	X	X	X	X	X	MAR-DEC	MAR-DEC	MAR-DEC	MAR-DEC	MAR-DEC
	Blue crab			HIGHLY-ABUNDANT	X	X	X	X	X	X	X	X	X	X	X	X	MAR-OCT	MAR-OCT	MAR-NOV	JAN-DEC	JAN-DEC
	Gulf stone crab			RARE	X	X	X	X	X	X	X	X	X	X	X	X	-	-	-	JAN-DEC	JAN-DEC
	Lesser blue crab			COMMON				X	X	X	X	X	X	X	X		-	-	-	APR-OCT	APR-NOV
	Atlantic seabob shrimp			RARE									X	X			-	-	-	-	SEP-OCT
	Brown shrimp			ABUNDANT		X	X	X	X	X	X	X	X	X	X		-	-	FEB-APR	APR-NOV	-
	Grass shrimp			ABUNDANT	X	X	X	X	X	X	X	X	X	X	X	X	JAN-DEC	JAN-DEC	JAN-DEC	JAN-DEC	JAN-DEC
	White shrimp			HIGHLY-ABUNDANT	X	X	X	X	X	X	X	X	X	X	X	X	-	-	MAY-OCT	MAY-DEC	JAN-DEC
0698	Brief squid			ABUNDANT	X	X	X	X	X	X	X	X	X	X	X	X	MAR-DEC	MAR-DEC	MAR-DEC	JAN-DEC	JAN-DEC
	Blue crab			ABUNDANT	X	X	X	X	X	X	X	X	X	X	X	X	MAR-OCT	MAR-OCT	MAR-NOV	JAN-DEC	JAN-DEC
	Gulf stone crab			RARE	X	X	X	X	X	X	X	X	X	X	X	X	NOV-MAR	MAR-NOV	MAR-DEC	JAN-DEC	JAN-DEC
	Lesser blue crab			ABUNDANT				X	X	X	X	X	X	X	X		-	-	-	APR-NOV	APR-NOV
	Atlantic seabob shrimp			RARE					X	X	X	X					-	-	-	-	JUN-SEP
	Brown shrimp			ABUNDANT		X	X	X	X	X	X	X	X	X	X	X	-	-	FEB-APR	APR-DEC	-
	Grass shrimp			ABUNDANT	X	X	X	X	X	X	X	X	X	X	X	X	JAN-DEC	JAN-DEC	JAN-DEC	JAN-DEC	JAN-DEC
	White shrimp			ABUNDANT	X	X	X	X	X	X	X	X	X	X	X	X	-	-	JUN-OCT	JUN-DEC	JAN-DEC
0699	Eastern oyster			UNCONSOLIDATED	X	X	X	X	X	X	X	X	X	X	X	X	MAR-DEC	MAR-DEC	-	-	JAN-DEC
	Brief squid			ABUNDANT	X	X	X	X	X	X	X	X	X	X	X	X	MAR-DEC	MAR-DEC	MAR-DEC	JAN-DEC	JAN-DEC
	Blue crab			ABUNDANT	X	X	X	X	X	X	X	X	X	X	X	X	MAR-OCT	MAR-OCT	MAR-NOV	JAN-DEC	JAN-DEC
	Gulf stone crab			RARE	X	X	X	X	X	X	X	X	X	X	X	X	NOV-MAR	MAR-NOV	MAR-DEC	JAN-DEC	JAN-DEC
	Lesser blue crab			ABUNDANT				X	X	X	X	X	X	X	X		-	-	-	APR-NOV	APR-NOV
	Atlantic seabob shrimp			RARE					X	X	X	X					-	-	-	-	JUN-SEP
	Brown shrimp			ABUNDANT		X	X	X	X	X	X	X	X	X	X	X	-	-	FEB-APR	APR-DEC	-
	Grass shrimp			ABUNDANT	X	X	X	X	X	X	X	X	X	X	X	X	JAN-DEC	JAN-DEC	JAN-DEC	JAN-DEC	JAN-DEC
	White shrimp			ABUNDANT	X	X	X	X	X	X	X	X	X	X	X	X	-	-	JUN-OCT	JUN-DEC	JAN-DEC
0700	Eastern oyster			REEF	X	X	X	X	X	X	X	X	X	X	X	X	MAR-DEC	MAR-DEC	-	-	JAN-DEC
	Brief squid			ABUNDANT	X	X	X	X	X	X	X	X	X	X	X	X	MAR-DEC	MAR-DEC	MAR-DEC	JAN-DEC	JAN-DEC
	Blue crab			ABUNDANT	X	X	X	X	X	X	X	X	X	X	X	X	MAR-OCT	MAR-OCT	MAR-NOV	JAN-DEC	JAN-DEC
	Gulf stone crab			RARE	X	X	X	X	X	X	X	X	X	X	X	X	NOV-MAR	MAR-NOV	MAR-DEC	JAN-DEC	JAN-DEC
	Lesser blue crab			ABUNDANT				X	X	X	X	X	X	X	X		-	-	-	APR-NOV	APR-NOV
	Atlantic seabob shrimp			RARE					X	X	X	X					-	-	-	-	JUN-SEP
	Brown shrimp			ABUNDANT		X	X	X	X	X	X	X	X	X	X	X	-	-	FEB-APR	APR-DEC	-
	Grass shrimp			ABUNDANT	X	X	X	X	X	X	X	X	X	X	X	X	JAN-DEC	JAN-DEC	JAN-DEC	JAN-DEC	JAN-DEC
	White shrimp			ABUNDANT	X	X	X	X	X	X	X	X	X	X	X	X	-	-	JUN-OCT	JUN-DEC	JAN-DEC
0701	Eastern oyster			LOW	X	X	X	X	X	X	X	X	X	X	X	X	MAR-DEC	MAR-DEC	-	-	JAN-DEC
	Brief squid			ABUNDANT	X	X	X	X	X	X	X	X	X	X	X	X	MAR-DEC	MAR-DEC	MAR-DEC	JAN-DEC	JAN-DEC
	Blue crab			ABUNDANT	X	X	X	X	X	X	X	X	X	X	X	X	MAR-OCT	MAR-OCT	MAR-NOV	JAN-DEC	JAN-DEC
	Gulf stone crab			RARE	X	X	X	X	X	X	X	X	X	X	X	X	NOV-MAR	MAR-NOV	MAR-DEC	JAN-DEC	JAN-DEC
	Lesser blue crab			ABUNDANT				X	X	X	X	X	X	X	X		-	-	-	APR-NOV	APR-NOV
	Atlantic seabob shrimp			RARE					X	X	X	X					-	-	-	-	JUN-SEP
	Brown shrimp			ABUNDANT		X	X	X	X	X	X	X	X	X	X	X	-	-	FEB-APR	APR-DEC	-
	Grass shrimp			ABUNDANT	X	X	X	X	X	X	X	X	X	X	X	X	JAN-DEC	JAN-DEC	JAN-DEC	JAN-DEC	JAN-DEC
	White shrimp			ABUNDANT	X	X	X	X	X	X	X	X	X	X	X	X	-	-	JUN-OCT	JUN-DEC	JAN-DEC

Marine Mammal

RARNUM	NAME	S F	T E	CONC	J	F	M	A	M	J	J	A	S	O	N	D	Mating	Calving	Pupping	Molting
0739	West Indian manatee	S/F	E/E	VERY-RARE						X	X	X					-	-	-	-
0740	Bottlenose dolphin			-	X	X	X	X	X	X	X	X	X	X	X	X	-	JAN-DEC	-	-
	West Indian manatee	S/F	E/E	VERY-RARE						X	X	X					-	-	-	-

Reptile

RARNUM	NAME	S F	T E	CONC	J	F	M	A	M	J	J	A	S	O	N	D	Nesting	Hatching	Interesting	Juveniles	Adults
0761	Kemp's ridley sea turtle	S/F	E/E	COMMON				X	X	X	X	X	X	X	X		-	-	-	APR-NOV	-

Terrestrial Mammal

RARNUM	NAME	S F	T E	CONC	J	F	M	A	M	J	J	A	S	O	N	D	Nesting
0798	Northern river otter			-	X	X	X	X	X	X	X	X	X	X	X	X	N/A

Human Use Resources

Boat Ramp	RARNUM	NAME	CONTACT	CONTACT INFO
	2079	James Robbins Park		chambersnechestrin@robbinspark
Facility	RARNUM	NAME	CONTACT	CONTACT INFO
	1212	Jeri's Seafood, Inc.	Tracy Woody	409-355-2236 or 2336
Heliport	RARNUM	NAME	CONTACT	CONTACT INFO
	6099	HOUSTON OIL & MINERALS SMITH POINT	96XS	HOUSTON, TX 77002

1. Incident Name	2. Operational Period (Date/Time)	Assignment List ICS 204-OS
------------------	-----------------------------------	----------------------------

3. Branch	4. Division/Group
-----------	-------------------

5. Operations Personnel	
Operations Section Chief	_____
Branch Director	_____
Division/Group Supervisor	_____

6. Resources Assigned This Period						"X" Indicates 204a attachment with special instructions
Resource Identifier	Leader	Contact Info #	# of Persons	Reporting Info/Notes/Remarks		

7. Assignments

SAFETY NOTE: Water is extremely shallow and many oyster reefs are present, use caution.

8. Site Number: 63-A	9. Quad Name Smith Point	10. NOAA Chart # 11326	11. GLO Atlas Page # 63	12. County Chambers
-------------------------	-----------------------------	---------------------------	----------------------------	------------------------

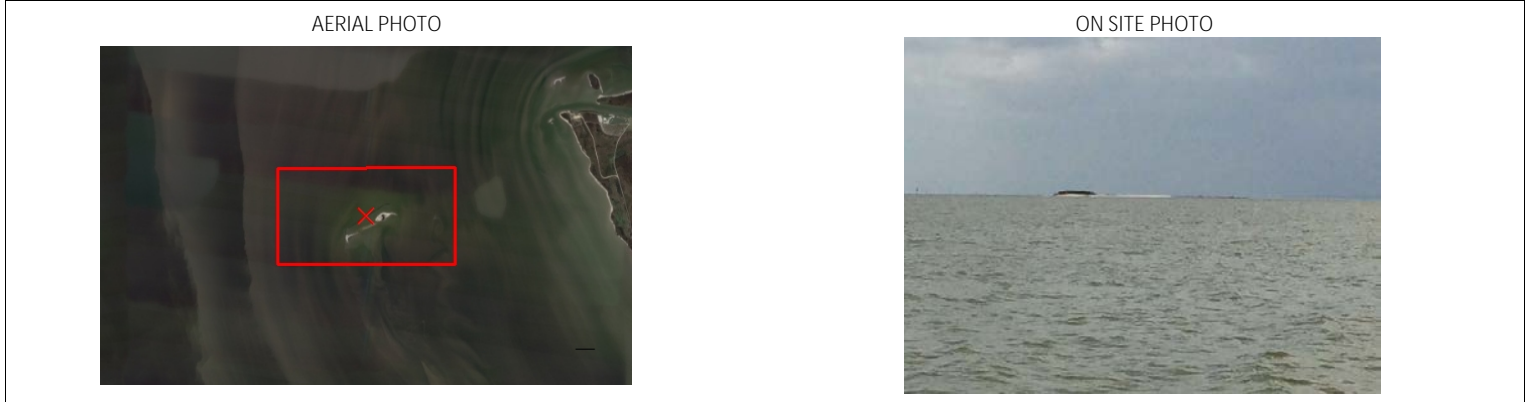
13. Site Information: Willie's Head Island Rookery Island west of Smith Point and north of Trinity River Channel. Rock breakwater is present on the north and west sides of the island. Contact Houston Audubon Society (713- 932-1639) if threat exists.	14. Latitude From: 29 32' 14"N	To:	
	15. Longitude From: 94 48' 26"W	To:	

16. Closest Boat Ramp James H. Robbins Memorial Park	17. Distance From Ramp 1 NM	18. Boat Type Flat Bottom Boat
---	--------------------------------	-----------------------------------

19. Directions From Local Sector Accessible by boat only.	20. Closest Airport Chambers County Airport (TOO)
	21. Closest Helo Spot Chambers County Airport (TOO)

22. Trustee/Contact Numbers	23. Resources at Risk	24. Width of inlet 5000' around island in ft.
USCG: (281) 464-4800 RRC: (713) 869-5001	Atlas Priority High	25. Water depth in ft. 1'
USCG DUTY: (800) 424-4800 TPWD: (281) 842-8100	Environmental High	26. Current Slow
TGLO: (800) 832-8224 NRDA: (512) 463 -9309	Economic N/A	27. No. of Personnel 6
TCEQ: (713) 767-3563 USFWS: (281) 286-8282		

25. Booming Strategy Recommendation Deploy boom to prevent oiling of rookery areas during nesting season.



29. Prepared By:	30. Reviewed by (PSC)	31. Reviewed by (OSC):
Assignment List	ICS 204 OS (Geographic Response Plan)	Project Updated:

"Response strategies may need to be modified to account for changes due to seasonality, weather conditions, spill characteristics, tides and any other considerations."

1. Incident Name	2. Operational Period (Date/Time)	Assignment List ICS 204-OS
------------------	-----------------------------------	----------------------------

3. Branch	4. Division/Group
-----------	-------------------

5. Operations Personnel	
Operations Section Chief	_____
Branch Director	_____
Division/Group Supervisor	_____

6. Resources Assigned This Period					"X" Indicates 204a attachment with special instructions
Resource Identifier	Leader	Contact Info #	# of Persons	Reporting Info/Notes/Remarks	

7. Assignments

SAFETY NOTE: Water is extremely shallow and many oyster reefs are present, use caution

8. Site Number: 63-B	9. Quad Name Smith Point	10. NOAA Chart # 11326	11. GLO Atlas Page # 63	12. County Chambers
-------------------------	-----------------------------	---------------------------	----------------------------	------------------------

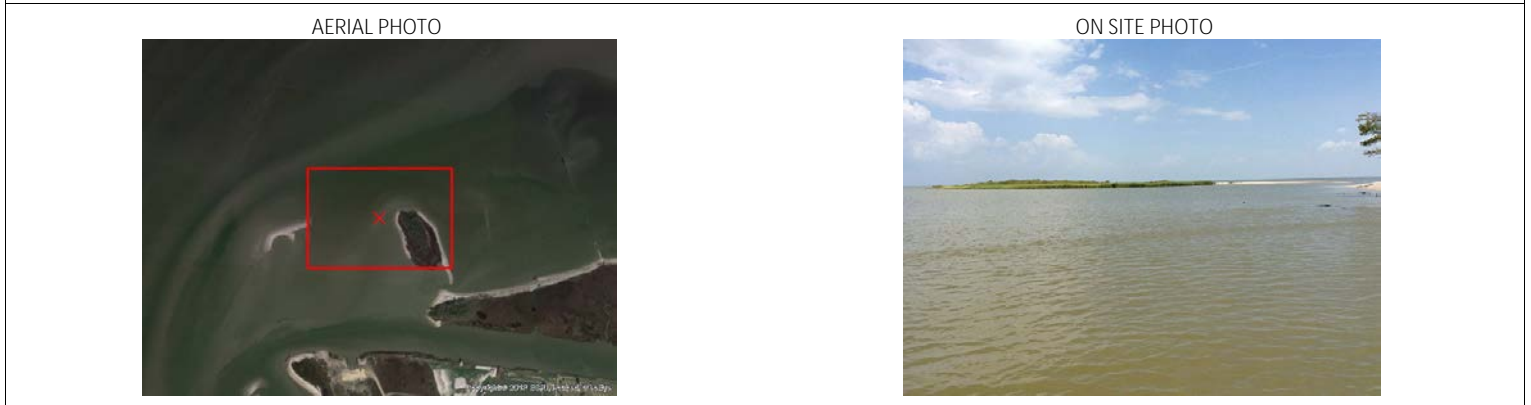
13. Site Information: Smith Point Island Marsh complex inside old Geotube. Water around marsh is extremely shallow.	14. Latitude From: 29 32' 56"N	To:	
	15. Longitude From: 94 47' 09"W	To:	

16. Closest Boat Ramp James H. Robbins Memorial Park	17. Distance From Ramp 900'	18. Boat Type Airboat
---	--------------------------------	--------------------------

19. Directions From Local Sector Accessible by boat only	20. Closest Airport Chambers County Airport (TOO)
	21. Closest Helo Spot Chambers County Airport (TOO)

22. Trustee/Contact Numbers	23. Resources at Risk	24. Width of inlet 1000' in ft.
USCG: (281) 464-4800 RRC: (713) 869-5001	Atlas Priority Medium	25. Water depth in ft. 1'
USCG DUTY: (800) 424-4800 TPWD: (281) 842-8100	Environmental High	26. Current Slow
TGLO: (800) 832-8224 NRDA: (512) 463 -9309	Economic N/A	27. No. of Personnel 4
TCEQ: (713) 767-3563 USFWS: (281) 286-8282		

25. Booming Strategy Recommendation Deploy containment boom to prevent oil from impacting marsh.
--



29. Prepared By:	30. Reviewed by (PSC)	31. Reviewed by (OSC):
Assignment List	ICS 204 OS (Geographic Response Plan)	Project Updated:

"Response strategies may need to be modified to account for changes due to seasonality, weather conditions, spill characteristics, tides and any other considerations."

1. Incident Name	2. Operational Period (Date/Time)	Assignment List ICS 204-OS
------------------	-----------------------------------	----------------------------

3. Branch	4. Division/Group
-----------	-------------------

5. Operations Personnel	
Operations Section Chief	_____
Branch Director	_____
Division/Group Supervisor	_____

6. Resources Assigned This Period					"X" Indicates 204a attachment with special instructions
Resource Identifier	Leader	Contact Info #	# of Persons	Reporting Info/Notes/Remarks	

7. Assignments

SAFETY NOTE: Water is extremely shallow and many oyster reefs are present, use caution

8. Site Number: 63-C	9. Quad Name Smith Point	10. NOAA Chart # 11326	11. GLO Atlas Page # 63	12. County Chambers
-------------------------	-----------------------------	---------------------------	----------------------------	------------------------

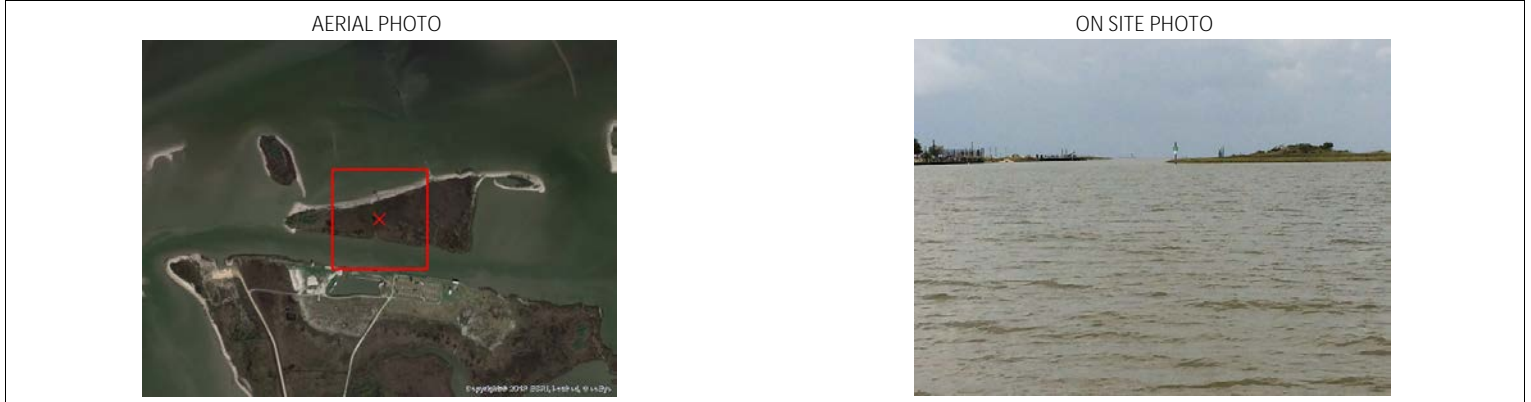
13. Site Information: Morgan Point Island Marsh complex across from James H. Robbins Memorial Park boat ramp. Water around marsh is extremely shallow.			14. Latitude From: 29-32-49N	To:
			15. Longitude From: 094-47-00W	To:

16. Closest Boat Ramp James H. Robbins Memorial Park	17. Distance From Ramp 100 yds	18. Boat Type Multiple Types
---	-----------------------------------	---------------------------------

19. Directions From Local Sector Accessible by boat only		20. Closest Airport Chambers County Airport (TOO)
		21. Closest Helo Spot Chambers County Airport (TOO)

22. Trustee/Contact Numbers	23. Resources at Risk	24. Width of inlet 3000' in ft.
USCG: (281) 464-4800 RRC: (713) 869-5001	Atlas Priority Medium	25. Water depth in ft. 1'
USCG DUTY: (800) 424-4800 TPWD: (281) 842-8100	Environmental High	26. Current Slow
TGLO: (800) 832-8224 NRDA: (512) 463 -9309	Economic N/A	27. No. of Personnel 4
TCEQ: (713) 767-3563 USFWS: (281) 286-8282		

25. Booming Strategy Recommendation Deploy boom along Southern and Eastern side of Island to prevent oil from impacting marsh.
--



29. Prepared By:	30. Reviewed by (PSC)	31. Reviewed by (OSC):
Assignment List	ICS 204 OS (Geographic Response Plan)	Project Updated:

"Response strategies may need to be modified to account for changes due to seasonality, weather conditions, spill characteristics, tides and any other considerations."

1. Incident Name	2. Operational Period (Date/Time)	Assignment List ICS 204-OS
------------------	-----------------------------------	----------------------------

3. Branch	4. Division/Group
-----------	-------------------

5. Operations Personnel	
Operations Section Chief	_____
Branch Director	_____
Division/Group Supervisor	_____

6. Resources Assigned This Period						"X" Indicates 204a attachment with special instructions
Resource Identifier	Leader	Contact Info #	# of Persons	Reporting Info/Notes/Remarks		

7. Assignments

SAFETY NOTE: Water is extremely shallow and many oyster reefs are present, use caution

8. Site Number: 63-D	9. Quad Name Smith Point	10. NOAA Chart # 11326	11. GLO Atlas Page # 63	12. County Chambers
-------------------------	-----------------------------	---------------------------	----------------------------	------------------------

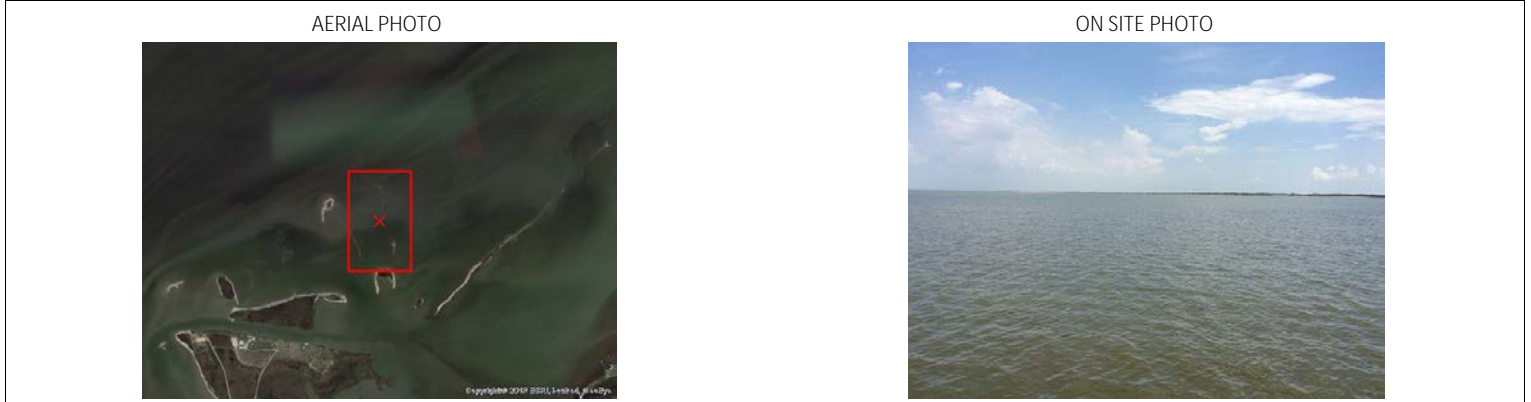
13. Site Information: Vingt-et-un Islands Marsh complex on Vingt-et-un Islands. Water around marsh is extremely shallow. Contact Houston Audubon Society (713-932-1639) if threat exists.			14. Latitude From: 29-33-1N	To:
			15. Longitude From: 094-46-28W	To:

16. Closest Boat Ramp James H. Robbins Memorial Park	17. Distance From Ramp 0.5 NM	18. Boat Type Airboat
---	----------------------------------	--------------------------

19. Directions From Local Sector Accessible by boat only.		20. Closest Airport Chambers County Airport (TOO)
		21. Closest Helo Spot Chambers County Airport (TOO)

22. Trustee/Contact Numbers	23. Resources at Risk	24. Width of inlet 400' in ft.
USCG: (281) 464-4800 RRC: (713) 869-5001	Atlas Priority Medium	25. Water depth in ft. 1'
USCG DUTY: (800) 424-4800 TPWD: (281) 842-8100	Environmental High	26. Current Slow
TGLO: (800) 832-8224 NRDA: (512) 463 -9309	Economic N/A	27. No. of Personnel 2
TCEQ: (713) 767-3563 USFWS: (281) 286-8282		

25. Booming Strategy Recommendation Boom across opening to marsh to prevent impact from oil.
--



29. Prepared By:	30. Reviewed by (PSC)	31. Reviewed by (OSC):
Assignment List	ICS 204 OS (Geographic Response Plan)	Project Updated:

"Response strategies may need to be modified to account for changes due to seasonality, weather conditions, spill characteristics, tides and any other considerations."

1. Incident Name	2. Operational Period (Date/Time)	Assignment List ICS 204-OS
------------------	-----------------------------------	----------------------------

3. Branch	4. Division/Group
-----------	-------------------

5. Operations Personnel	
Operations Section Chief	_____
Branch Director	_____
Division/Group Supervisor	_____

6. Resources Assigned This Period					"X" Indicates 204a attachment with special instructions
Resource Identifier	Leader	Contact Info #	# of Persons	Reporting Info/Notes/Remarks	

7. Assignments

SAFETY NOTE: Water is extremely shallow and many oyster reefs are present, use caution

8. Site Number: 63-E	9. Quad Name Smith Point	10. NOAA Chart # 11326	11. GLO Atlas Page # 63	12. County Chambers
-------------------------	-----------------------------	---------------------------	----------------------------	------------------------

13. Site Information: Trout Point Marsh Marsh complex at Trout Point. Water around marsh is extremely shallow.		14. Latitude From: 29-32-37N	To:
		15. Longitude From: 094-46-24W	To:

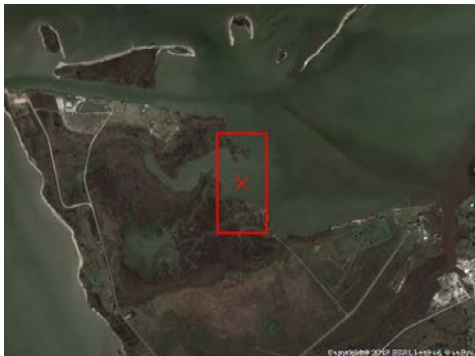
16. Closest Boat Ramp James H. Robbins Memorial Park	17. Distance From Ramp 5 min	18. Boat Type shallow hull/airboat
---	---------------------------------	---------------------------------------

19. Directions From Local Sector I-10 East to Hwy 61/FM 562 South. Right on Brandt Rd. to Texas County Rd. Turn right. Go to Lyle St. and turn right. Left on Asa John St.		20. Closest Airport Chambers County Airport (TOO)	
		21. Closest Helo Spot Chambers County Airport (TOO)	

22. Trustee/Contact Numbers	23. Resources at Risk	24. Width of inlet 4000' in ft.
USCG: (281) 464-4800 RRC: (713) 869-5001	Atlas Priority High	25. Water depth in ft. 1'
USCG DUTY: (800) 424-4800 TPWD: (281) 842-8100	Environmental High	26. Current Slow
TGLO: (800) 832-8224 NRDA: (512) 463 -9309	Economic N/A	27. No. of Personnel 6
TCEQ: (713) 767-3563 USFWS: (281) 286-8282		

25. Booming Strategy Recommendation Boom marsh complex at Trout Point to prevent oil from impacting marsh.
--

AERIAL PHOTO



ON SITE PHOTO



29. Prepared By:	30. Reviewed by (PSC)	31. Reviewed by (OSC):
Assignment List	ICS 204 OS (Geographic Response Plan)	Project Updated:

"Response strategies may need to be modified to account for changes due to seasonality, weather conditions, spill characteristics, tides and any other considerations."

1. Incident Name	2. Operational Period (Date/Time)	Assignment List ICS 204-OS
------------------	-----------------------------------	----------------------------

3. Branch	4. Division/Group
-----------	-------------------

5. Operations Personnel	
Operations Section Chief	_____
Branch Director	_____
Division/Group Supervisor	_____

6. Resources Assigned This Period					"X" Indicates 204a attachment with special instructions
Resource Identifier	Leader	Contact Info #	# of Persons	Reporting Info/Notes/Remarks	

7. Assignments

SAFETY NOTE: Water is extremely shallow and many oyster reefs are present, use caution

8. Site Number: 63-F	9. Quad Name Smith Point	10. NOAA Chart # 11326	11. GLO Atlas Page # 63	12. County Chambers
-------------------------	-----------------------------	---------------------------	----------------------------	------------------------

13. Site Information: Unnamed bayou #2 (LL Nelson Rd) Bayou leading into town of Smith Point with adjacent marsh. Water around marsh is extremely shallow.		14. Latitude From: 29 32' 32"N	To:
		15. Longitude From: 94 45' 43"W	To:

16. Closest Boat Ramp James H. Robbins Memorial Park	17. Distance From Ramp 1 NM	18. Boat Type Multiple Types
---	--------------------------------	---------------------------------

19. Directions From Local Sector I-10 East to Hwy 61/FM 562 South. Right on Brandt Rd. to LL Nelson Rd.		20. Closest Airport Chambers County Airport (TOO)	
		21. Closest Helo Spot Chambers County Airport (TOO)	

22. Trustee/Contact Numbers	23. Resources at Risk	24. Width of inlet 600' in ft.
USCG: (281) 464-4800 RRC: (713) 869-5001	Atlas Priority Medium	25. Water depth in ft. 1'
USCG DUTY: (800) 424-4800 TPWD: (281) 842-8100	Environmental High	26. Current Slow
TGLO: (800) 832-8224 NRDA: (512) 463 -9309	Economic N/A	27. No. of Personnel 4
TCEQ: (713) 767-3563 USFWS: (281) 286-8282		

25. Booming Strategy Recommendation Boom bayou leading into town of Smith Point along LL Nelson Rd. to prevent oil from entering marsh.

AERIAL PHOTO



ON SITE PHOTO



29. Prepared By:	30. Reviewed by (PSC)	31. Reviewed by (OSC):
Assignment List	ICS 204 OS (Geographic Response Plan)	Project Updated:

"Response strategies may need to be modified to account for changes due to seasonality, weather conditions, spill characteristics, tides and any other considerations."

1. Incident Name	2. Operational Period (Date/Time)	Assignment List ICS 204-OS
------------------	-----------------------------------	----------------------------

3. Branch	4. Division/Group
-----------	-------------------

5. Operations Personnel	
Operations Section Chief	_____
Branch Director	_____
Division/Group Supervisor	_____

6. Resources Assigned This Period						"X" Indicates 204a attachment with special instructions
Resource Identifier	Leader	Contact Info #	# of Persons	Reporting Info/Notes/Remarks		

7. Assignments

SAFETY NOTE: Water is extremely shallow and many oyster reefs are present, use caution.

8. Site Number: 63-G	9. Quad Name Smith Point	10. NOAA Chart # 11426	11. GLO Atlas Page # 63	12. County Chambers
-------------------------	-----------------------------	---------------------------	----------------------------	------------------------

13. Site Information: Unnamed bayou #1 (LL Nelson Rd) Bayou leading into town of Smith Point with adjacent marsh. Water around marsh is extremely shallow.			14. Latitude From: 29 32' 32"N	To:
			15. Longitude From: 94 45' 43"W	To:

16. Closest Boat Ramp James H. Robbins Memorial Park	17. Distance From Ramp 1 NM	18. Boat Type Multiple Types
---	--------------------------------	---------------------------------

19. Directions From Local Sector I-10 East to Hwy 61/FM 562 South. Right on Brandt Rd. to LL Nelson Rd.		20. Closest Airport Chambers County Airport (TOO)
		21. Closest Helo Spot Chambers County Airport (TOO)

22. Trustee/Contact Numbers	23. Resources at Risk	24. Width of inlet 300' in ft.
USCG: (281) 464-4800 RRC: (713) 869-5001	Atlas Priority Medium	25. Water depth in ft. 1'
USCG DUTY: (800) 424-4800 TPWD: (281) 842-8100	Environmental High	26. Current Slow
TGLO: (800) 832-8224 NRDA: (512) 463 -9309	Economic Medium	27. No. of Personnel 2
TCEQ: (713) 767-3563 USFWS: (281) 286-8282		

25. Booming Strategy Recommendation Boom bayou leading into town of Smith Point along LL Nelson Rd. to prevent oil from entering marsh.

AERIAL PHOTO



ON SITE PHOTO



29. Prepared By:	30. Reviewed by (PSC)	31. Reviewed by (OSC):
Assignment List	ICS 204 OS (Geographic Response Plan)	Project Updated:

"Response strategies may need to be modified to account for changes due to seasonality, weather conditions, spill characteristics, tides and any other considerations."

1. Incident Name	2. Operational Period (Date/Time)	Assignment List ICS 204-OS
------------------	-----------------------------------	----------------------------

3. Branch	4. Division/Group
-----------	-------------------

5. Operations Personnel	Operations Section Chief _____
Branch Director	_____
Division/Group Supervisor	_____

6. Resources Assigned This Period						"X" Indicates 204a attachment with special instructions
Resource Identifier	Leader	Contact Info #	# of Persons	Reporting Info/Notes/Remarks		

7. Assignments

SAFETY NOTE: Water is extremely shallow and many oyster reefs are present, use caution

8. Site Number: 63-H	9. Quad Name Smith Point	10. NOAA Chart # 11326	11. GLO Atlas Page # 63	12. County Chambers
-------------------------	-----------------------------	---------------------------	----------------------------	------------------------

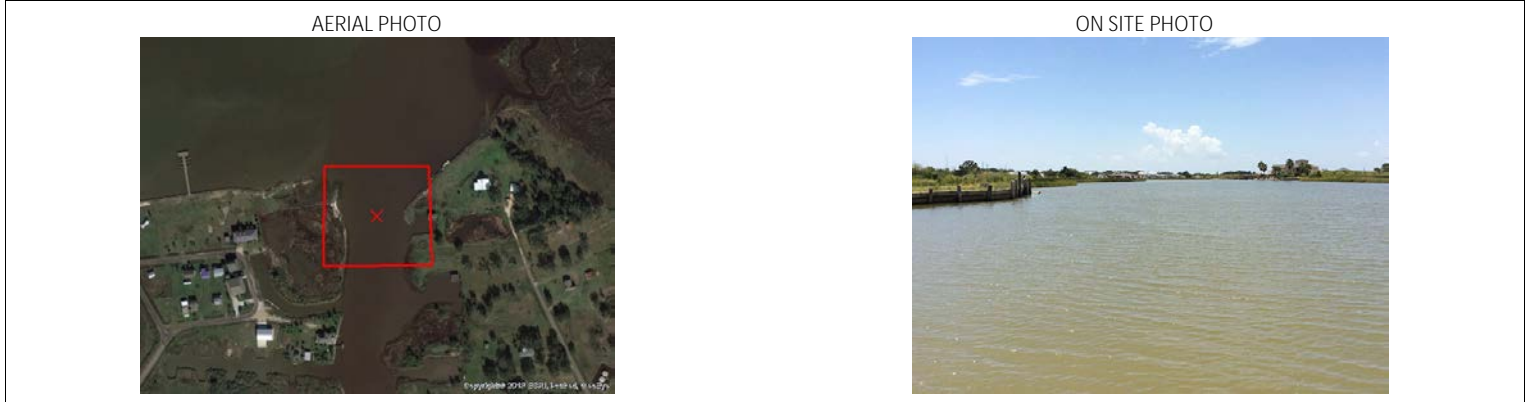
13. Site Information: Unnamed Bayou (Whitehead Rd.) Bayou leading into town of Smith Point with adjacent marsh. Water around marsh is extremely shallow.	14. Latitude From: 29 32' 27"N	To:	
	15. Longitude From: 94 45' 45"W	To:	

16. Closest Boat Ramp James H. Robbins Memorial Park	17. Distance From Ramp 1 NM	18. Boat Type Multiple Types
---	--------------------------------	---------------------------------

19. Directions From Local Sector I-10 East to Hwy 61/FM 562 South. Right on Brandt Rd. to Whitehead Rd.	20. Closest Airport Chambers County Airport (TOO)		
	21. Closest Helo Spot Chambers County Airport (TOO)		

22. Trustee/Contact Numbers USCG: (281) 464-4800 RRC: (713) 869-5001 USCG DUTY: (800) 424-4800 TPWD: (281) 842-8100 TGLO: (800) 832-8224 NRDA: (512) 463 -9309 TCEQ: (713) 767-3563 USFWS: (281) 286-8282	23. Resources at Risk Atlas Priority High Environmental High Economic N/A	24. Width of inlet 400' in ft. 25. Water depth in ft. 26. Current Slow 27. No. of Personnel 2
---	---	---

25. Booming Strategy Recommendation Boom to prevent oil from entering bayou.
--



29. Prepared By:	30. Reviewed by (PSC)	31. Reviewed by (OSC):
Assignment List	ICS 204 OS (Geographic Response Plan)	Project Updated:

"Response strategies may need to be modified to account for changes due to seasonality, weather conditions, spill characteristics, tides and any other considerations."

1. Incident Name	2. Operational Period (Date/Time)	Assignment List ICS 204-OS
------------------	-----------------------------------	----------------------------

3. Branch	4. Division/Group
-----------	-------------------

5. Operations Personnel	_____
Operations Section Chief	_____
Branch Director	_____
Division/Group Supervisor	_____

6. Resources Assigned This Period						"X" Indicates 204a attachment with special instructions
Resource Identifier	Leader	Contact Info #	# of Persons	Reporting Info/Notes/Remarks		

7. Assignments

SAFETY NOTE: Shallow water. Snakes and Mosquitoes abundant. Tripping hazard along shoreline.

8. Site Number: 63-I	9. Quad Name Lake Stephenson	10. NOAA Chart # 11326,11331	11. GLO Atlas Page # 63	12. County Chambers
-------------------------	---------------------------------	---------------------------------	----------------------------	------------------------

13. Site Information: Frankland Point Frankland Point is an extensive marsh leading into Trinity Bay above Smith Point	14. Latitude From: 29 33' 15"N	To:	
	15. Longitude From: 94 45' 00"W	To:	

16. Closest Boat Ramp James H. Robbins Memorial Park, Smith Point	17. Distance From Ramp 2 NM	18. Boat Type Multiple Types
--	--------------------------------	---------------------------------

19. Directions From Local Sector Accessible by boat only.	20. Closest Airport Chambers County Airport (TOO)
	21. Closest Helo Spot Chambers County Airport (TOO)

22. Trustee/Contact Numbers	23. Resources at Risk	24. Width of inlet 1500' in ft.
USCG: (281) 464-4800 RRC: (713) 869-5001	Atlas Priority High	25. Water depth in ft. 2'
USCG DUTY: (800) 424-4800 TPWD: (281) 842-8100	Environmental High	26. Current Slow
TGLO: (800) 832-8224 NRDA: (512) 463 -9309	Economic N/A	27. No. of Personnel 4
TCEQ: (713) 767-3563 USFWS: (281) 286-8282		

25. Booming Strategy Recommendation Boom to protect sensitive marshes along South and Southeast side of point. Boom to prevent oil from entering marsh east of point.



29. Prepared By:	30. Reviewed by (PSC)	31. Reviewed by (OSC):
Assignment List	ICS 204 OS (Geographic Response Plan)	Project Updated:

"Response strategies may need to be modified to account for changes due to seasonality, weather conditions, spill characteristics, tides and any other considerations."