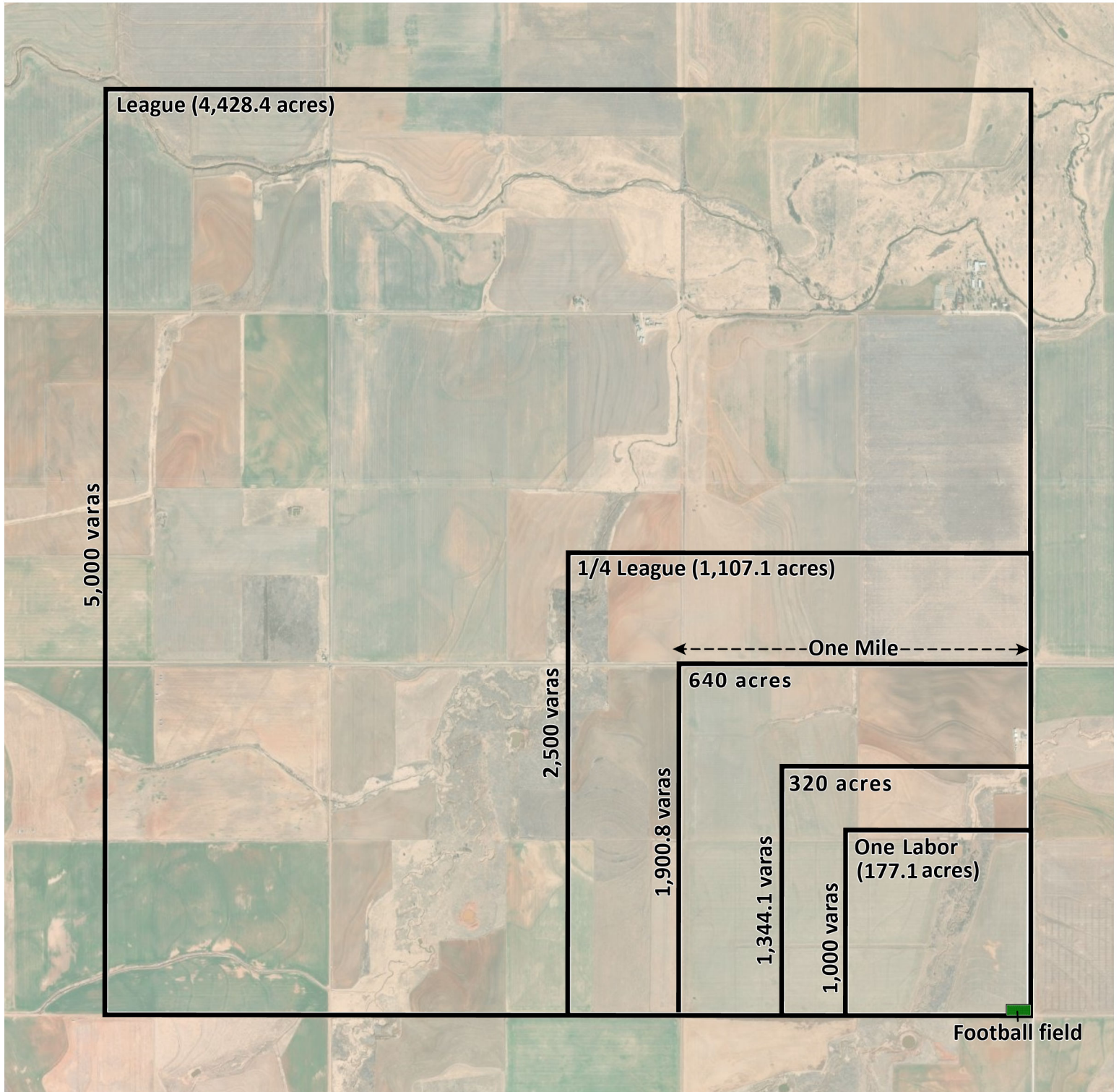




# Texas Land Measurements



One vara = 33 1/3 inches

One cordel = 50 varas

One marine league = 6,080 feet

One chain (Gunter) = 66 feet

One acre = 43,560 square feet

One statute mile = 5,280 feet

*To convert varas to feet: divide varas by 0.36*

*To convert feet to varas: multiply feet by 0.36*