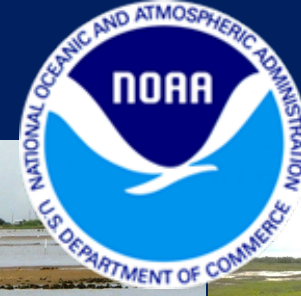


# CMP – CEPRA FUNDING WORKSHOP



Texas General Land Office · Commissioner Dawn Buckingham, M.D.



# INTRODUCTION

- Workshop Overview
- GLO Coastal Resources Update



# New GLO Website



**Texas General Land Office**

*Commissioner Dawn Buckingham, M.D.*



[English](#) [Spanish](#)

[ABOUT THE GLO](#) ▾ [COASTAL](#) ▾ [VETERANS](#) ▾ [ENERGY](#) ▾ [DISASTER RECOVERY](#) ▾ [ARCHIVES AND HERITAGE](#) ▾ [LAND](#) ▾ [OPEN GOVERNMENT](#) ▾

**We help make Texas the  
greatest state to live,  
work, and raise a family.**

Texas General Land Office  
Commissioner Dawn Buckingham, M.D.



# Clean Coast Texas

**Collaborate with coastal communities to achieve their water quality, economic, and public health goals with a focus on sustainable stormwater drainage and enhanced management of nonpoint source pollution.**

Jason Pinchback  
Water Resources Manager  
Texas General Land Office  
Jason.pinchback@glo.Texas.gov  
(512) 463-8664

Stormwater Retrofit Design & Construction

Community Planning

Education and Community Events

Ordinance & Stormwater Criteria

Water Quality Analysis & Citizen Science

Grant Funding Assistance

# Beach Watch

<https://www.texasbeachwatch.com/>



# Adopt-A-Beach Clean Ups



- Coastwide Spring – April 26
- Coastwide Fall – September 20
- Register online @ <https://texasadoptabeach>

# JOIN US FOR THE 2025 COASTAL ROUNDUP!



**APRIL 26, 2025  
10AM - 4PM**

This free, family-friendly event will showcase the work area organizations do to protect the Texas coast. Attendees will interact with ocean critters, see how Texas prepares for hurricanes and learn how to help preserve the coast. There will also be interactive exhibits, educational materials for the taking, door prize drawings and food trucks.

**Isla Blanca Park Pavilion**  
Channel View Rd, South Padre Island, TX 78597



Texas General Land Office  
Commissioner Dawn Buckingham, M.D.

# Update on the Texas Coastal Resiliency Master Plan



CMP and CEPRA Funding Workshops  
March 2025  
Various Locations

Joshua Oyer,  
GLO Coastal Protection Department





# TEXAS COASTAL RESILIENCY MASTER PLAN



MARCH 2023  
Commissioner Dawn Buckingham, M.D.  
Texas General Land Office



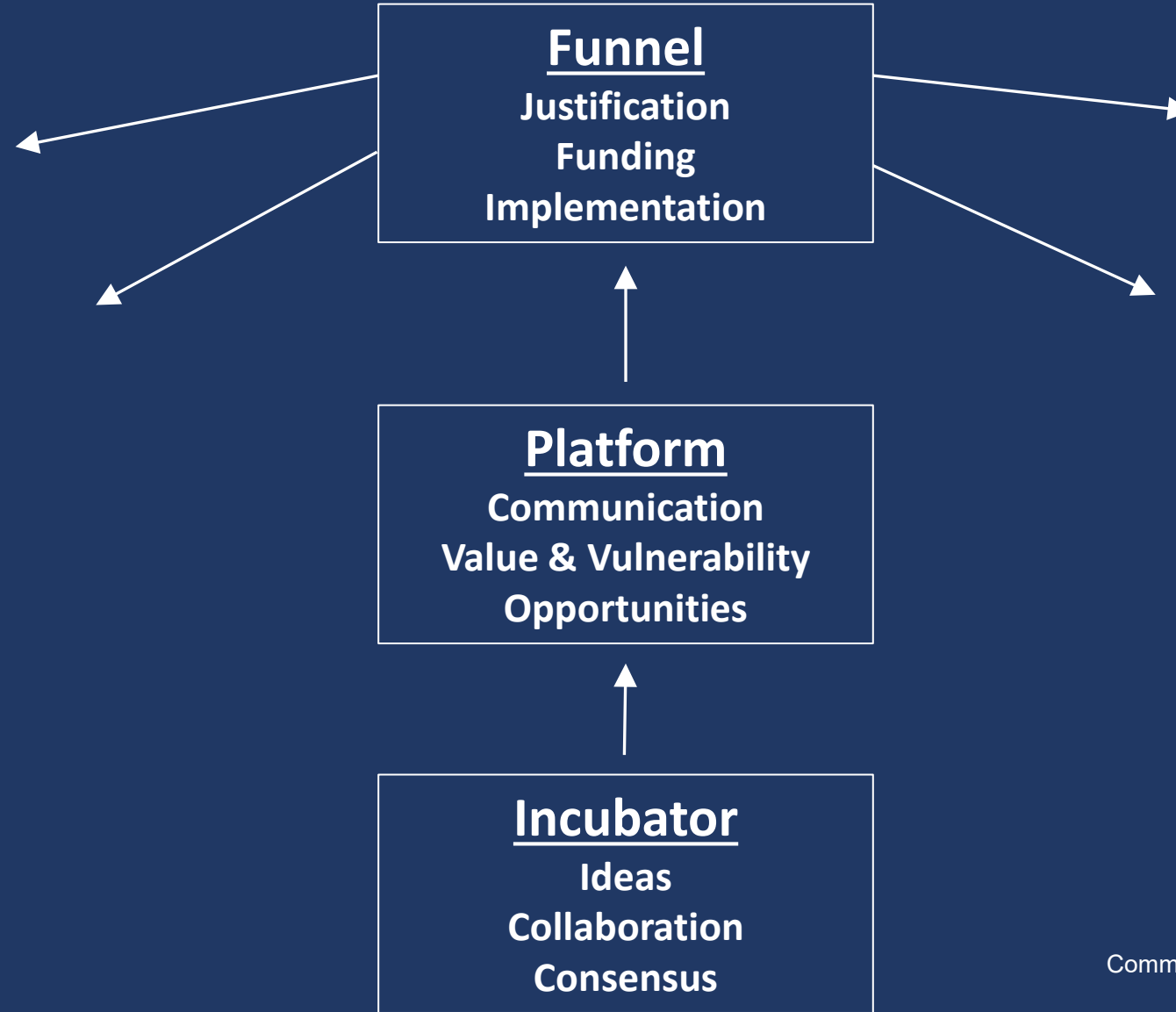
# Goals and Objectives

1. Identify, select, and fund projects that address the coastal vulnerabilities to restore, enhance, and protect the Texas coast
2. Adapt priorities to accommodate changing conditions through future iterations
3. Communicate the environmental and economic value of the Texas coast to state and national audiences



# Role of this Plan

---



# Role of this Plan

---

## What this Plan is

- A list of high-priority coastal resiliency initiatives and projects
- A snapshot of the needs of the state for coastal resiliency at the time of publication
- An opportunity for the GLO to align coastal resiliency priorities with feedback from stakeholders, coastal experts, and other public agencies

## What this Plan is NOT

- An automatic funding mechanism
  - \* *Tier 1 projects are typically prioritized for GLO funding programs*
- A guarantee that projects will be funded or completed
- A completely comprehensive list of the coastal resiliency projects that are necessary coastwide



## Concurrent State and Federal Efforts on the Texas Coast



# Complementary Planning

## Coastal Texas Project

- Galveston Bay Storm Surge Barrier System
- South Padre Island Beach Project
- Coastwide Ecosystem Restoration (8 projects)

## Regional Flood Planning

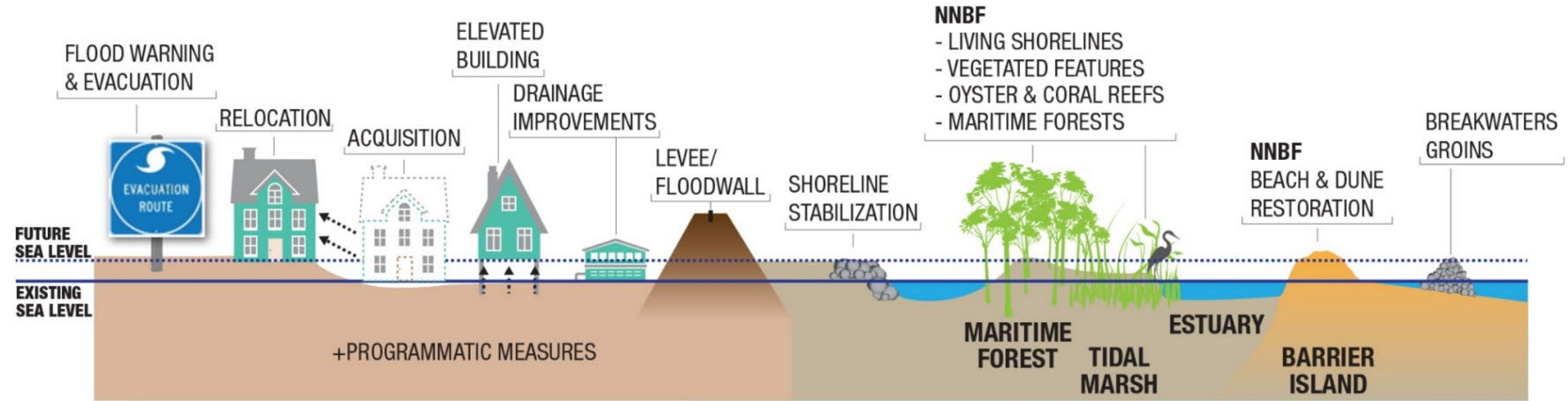
- GLO River Basin Flood Studies
- TWDB Regional Flood Planning Groups
- TDEM State Hazard Mitigation Plan

## Restoration Planning

- NRDA
- RESTORE
- NFWF



# Multiple Lines of Defense



source: USACE



# Vulnerabilities

## Planning Regions



### Land Change



Degraded or Lost Habitat



Gulf Shoreline Change



Bay Shoreline Change

### Flooding



Inland Flooding



Storm Surge



Tidal Flooding

### Degraded Water Resources



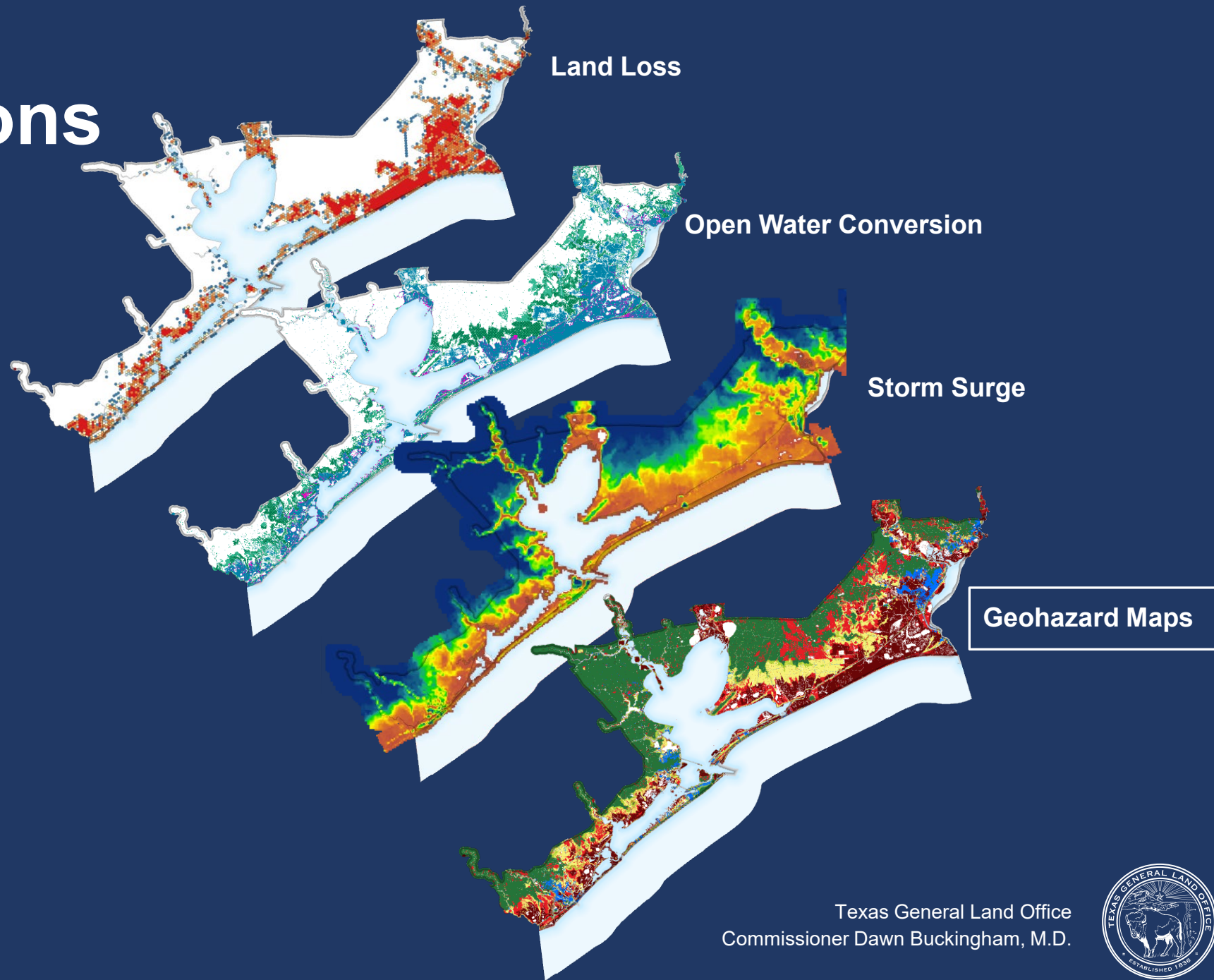
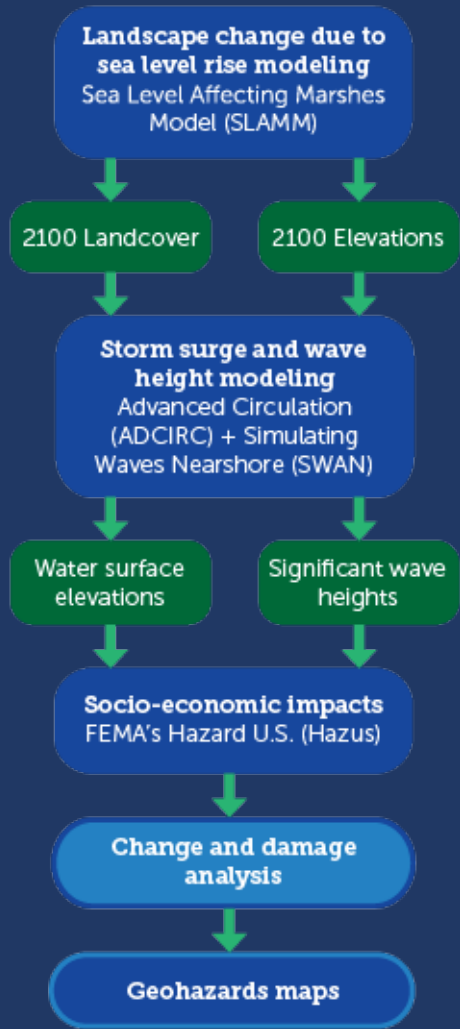
Degraded Water Quality



Degraded Water Quantity

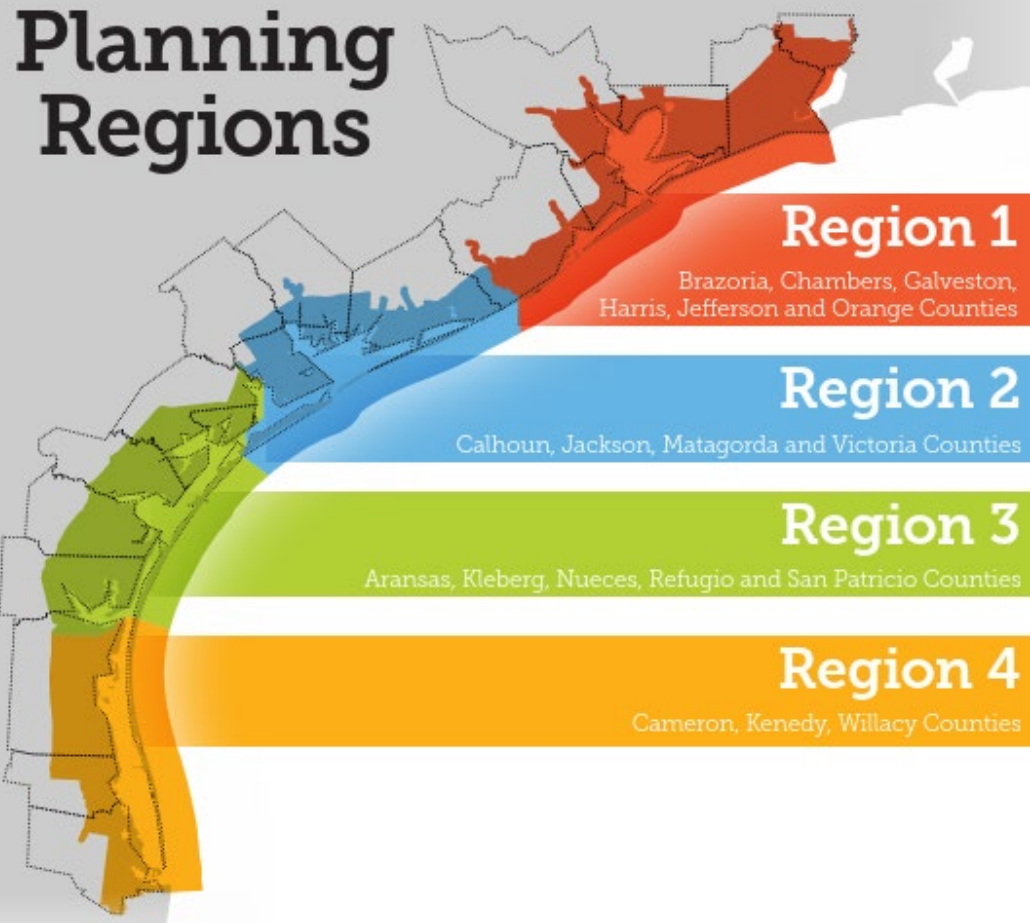
# Modeling Future Conditions

## MODELING FRAMEWORK



# Stakeholder Input

## Planning Regions



## Technical Advisory Committee (TAC)



### Local Governments and Community Leaders

- Elected officials
- Local government staff
- Councils of government (COGs)
- Metropolitan Planning Organizations (MPOs)
- Other local and regional community leaders



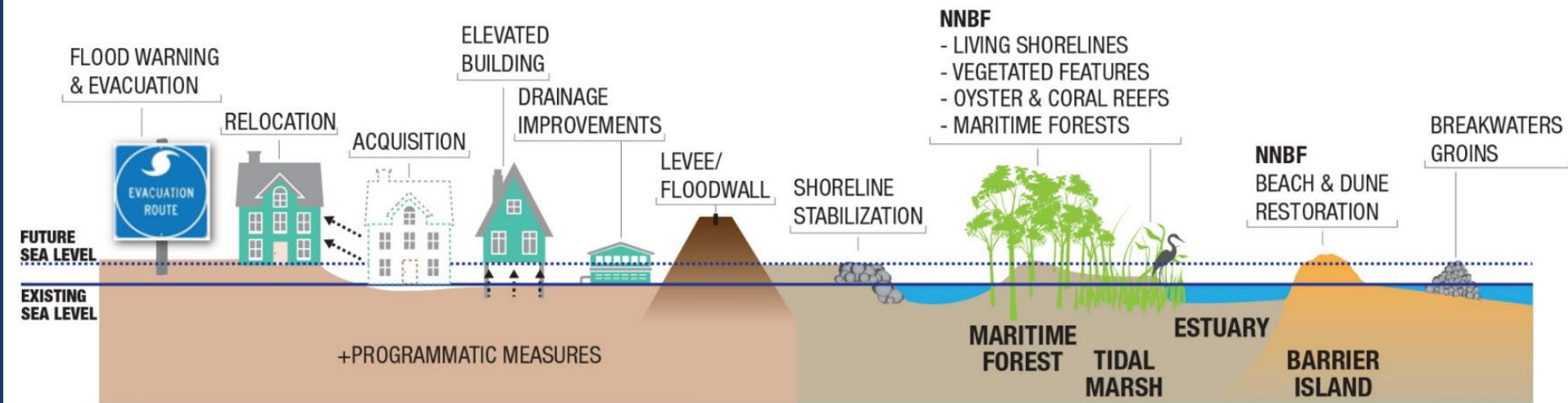
### Coastal Experts and Practitioners

- State agencies
- Federal agencies
- Universities
- Ports and navigation districts
- River authorities
- Non-profits
- Other technical partners





Project Type	Project Subtypes
Nature-Based	Hydrologic Connectivity <ul style="list-style-type: none"> <li>Freshwater Inflow</li> <li>Hydrologic Restoration</li> </ul>
	Habitat Creation & Restoration <ul style="list-style-type: none"> <li>Estuarine Wetlands</li> <li>Freshwater Wetlands</li> <li>Oyster Reef</li> <li>Barrier Islands</li> <li>Coastal Uplands</li> <li>Coastal Prairies</li> <li>Rookery Islands</li> <li>Dredge Placement Islands</li> <li>Seagrasses</li> <li>Tidal Flats</li> <li>Fisheries</li> </ul>
	Beach Nourishment <ul style="list-style-type: none"> <li>Bay</li> <li>Gulf</li> </ul>
	Dune Restoration <ul style="list-style-type: none"> <li>Dune</li> </ul>
Infrastructure-Based	Shoreline Stabilization <ul style="list-style-type: none"> <li>Living Shoreline</li> <li>Breakwater</li> <li>Misc. Wave Break</li> <li>Seawall</li> <li>Bulkhead</li> <li>Revetment</li> <li>Jetty</li> <li>Groin</li> </ul>
	Land Acquisitions <ul style="list-style-type: none"> <li>Acquisitions</li> <li>Conservation Easements</li> <li>Fee Simple</li> </ul>
	Structure/Debris Removal <ul style="list-style-type: none"> <li>Structures on Public Easement</li> <li>Abandoned Oil and Gas Wells</li> <li>Abandoned Boats</li> <li>Dock Pilings</li> <li>Post Storm Cleanup</li> </ul>
	Public Access & Improvements <ul style="list-style-type: none"> <li>ADA Accessibility</li> <li>Walkovers</li> <li>Piers, Boat Ramps</li> </ul>
	Flood Risk Reduction <ul style="list-style-type: none"> <li>Levees</li> <li>Flood Wall</li> <li>Storm Surge Barrier</li> </ul>
	Community Infrastructure <ul style="list-style-type: none"> <li>Drainage</li> <li>Utilities</li> <li>Roadway/Bridge Repair</li> <li>Roadway/Bridge Elevation</li> <li>Critical Facilities</li> <li>Structure Raising</li> </ul>

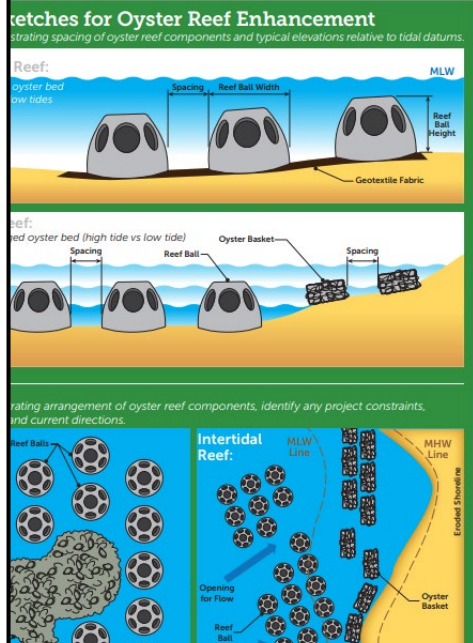
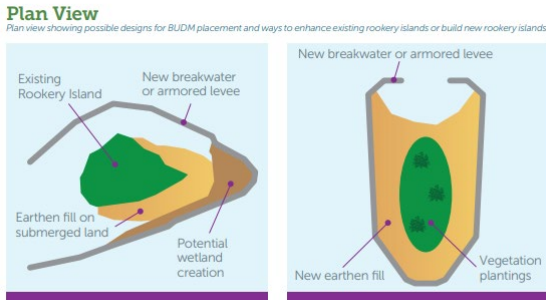
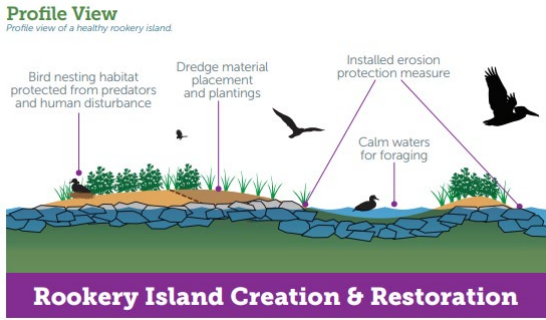


source: USACE

Shoreline Stabilization	27%
Habitat Restoration	17%
Programmatic	16%
Land Acquisitions	10%
Rookery Islands	9%
Beach Nourishment	9%
Oyster Reef	5%
Hydrologic Connectivity	5%
Community Infrastructure	2%

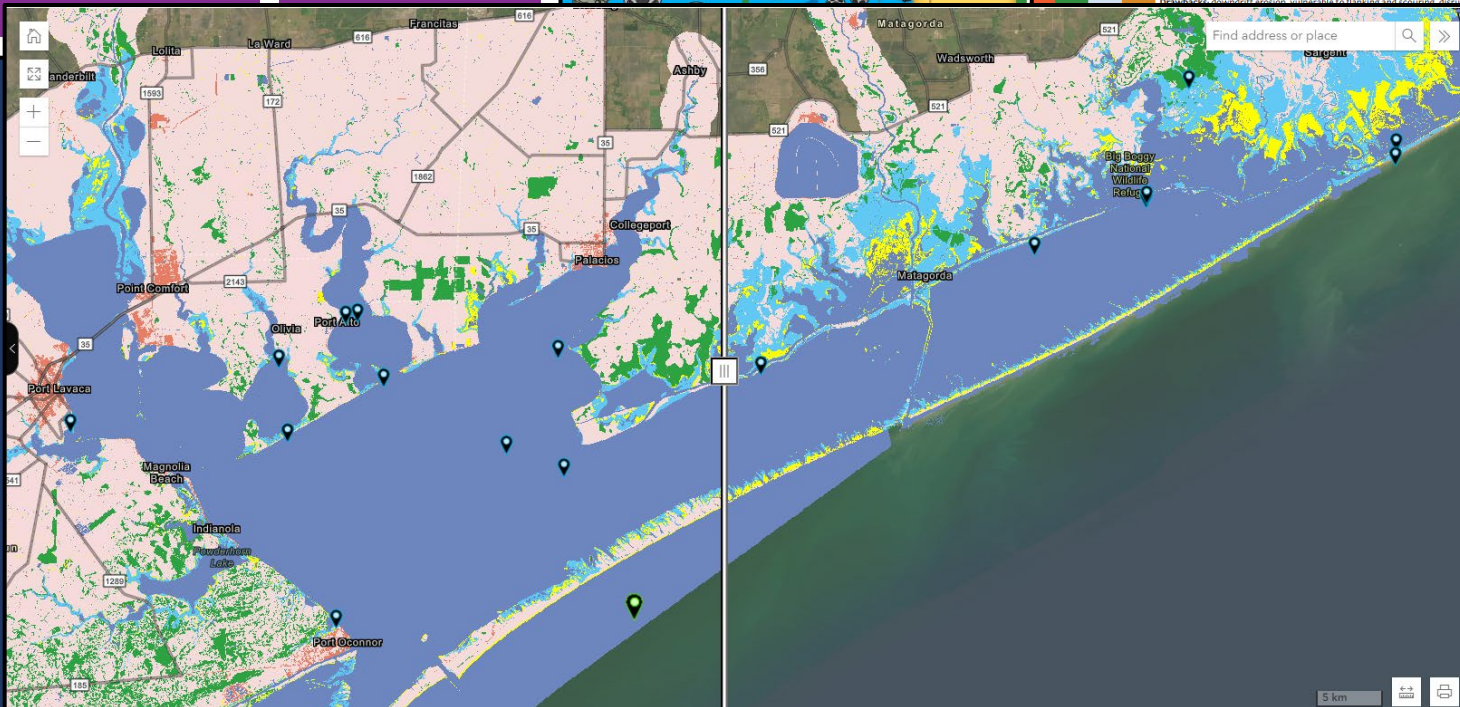


# Communication



Green and gray techniques to stabilize and protect shorelines

Permanence	Cost	Adaptability to RSLR	Wave Energy Reduction	Benefits and Drawbacks
low	low	mod	low	<b>Benefits:</b> stabilizes and captures sediment, assists in additional plant colonization, improves habitat for marine and benthic species, aesthetics <b>Drawbacks:</b> low permanence unless coupled with structures, susceptible to RSLR
mod	low	low	low	<b>Benefits:</b> anchors sediment, assists in plant colonization, small footprint, unobtrusive, aesthetics <b>Drawbacks:</b> requires periodic adjustment for maximum effect, may become a safety or debris concern once deteriorated
mod	low	mod	mod	<b>Benefits:</b> provides natural estuarine habitat, recreation opportunities, and water filtration <b>Drawbacks:</b> may be limited in the amount of vertical relief attained
low	mod	mod	mod	<b>Benefits:</b> can create additional protected space for habitats, such as marsh grass, and estuarine species, berms can act sacrificially and add sediment to the nearshore system <b>Drawbacks:</b> low permanence unless coupled with structures, susceptible to RSLR, may become a safety or debris concern once deteriorated
low	high	high	high	<b>Benefits:</b> provides recreational opportunities, able to adapt to wave climate and recover from losses <b>Drawbacks:</b> causes disruption to beach microbiome, turtle nesting, and beach recreation during construction, cyclical sand losses are expected
high	high	mod	high	<b>Benefits:</b> provides transitional estuarine habitat area, adaptive to RSLR, reduces need for structure height and hardening when compared to a traditional levee <b>Drawbacks:</b> requires larger footprint than a traditional levee to construct, requires maintenance
mod	mod	low	mod	<b>Benefits:</b> provides interstitial estuarine habitat <b>Drawbacks:</b> requires periodic adjustment for maximum effect, may become a safety or debris concern once deteriorated
high	high	mod	mod	<b>Benefits:</b> allows leeward sediment accretion, creates sheltered estuarine areas, can be coupled with natural features to create a living shoreline <b>Drawbacks:</b> downdrift erosion, may become a safety or debris concern once deteriorated
high	high	mod	mod	<b>Benefits:</b> anchors shoreline location, prevents upland erosion <b>Drawbacks:</b> downdrift erosion, disallows shoreline migration, vulnerable to flanking and scouring, difficult to permit
mod	mod	low	mod	<b>Benefits:</b> anchors shoreline location, prevents upland erosion, small footprint <b>Drawbacks:</b> profile deflation, vulnerable to flanking, erosion, and overwash, disrupts aesthetics, cuts off upland habitat from water
high	high	low	low	<b>Benefits:</b> updrift accumulation <b>Drawbacks:</b> downdrift erosion, vulnerable to flanking
mod	mod	mod	mod	<b>Benefits:</b> anchors shoreline location, flood and storm surge control <b>Drawbacks:</b> downdrift erosion, vulnerable to flanking and scouring, difficult to permit



- All Plan Documents
- Story Map
- Modeling Data Viewer
- Resiliency Design Guides

[www.glo.texas.gov/crmp](http://www.glo.texas.gov/crmp)



# Thank you!

---

Joshua Oyer

Coastal Resiliency Program Manager

Texas General Land Office

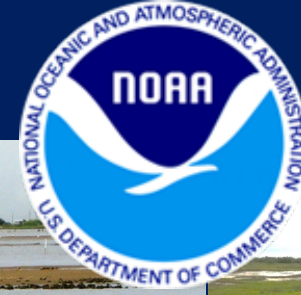
[joshua.oyer@glo.texas.gov](mailto:joshua.oyer@glo.texas.gov)

512-475-5130

Texas General Land Office  
Commissioner Dawn Buckingham, M.D.



# CMP GRANT WORKSHOP CYCLE 31



Texas General Land Office · Commissioner Dawn Buckingham, M.D.

# Coastal Coordination Advisory Committee



Commissioner-appointed committee members include a coastal resident representative, coastal business representative, agriculture representative, and a local elected official.



# CMP Responsibilities

---

## 1. Grants

- Administer grants funded by NOAA

## 2. Consistency Review

- Review permit applications for consistency with the goals and policies of the CMP (e.g., USACE)

## 3. Permitting Assistance

- Assist individuals, small businesses, and local communities with coastal permitting



# CMP Funding Sources

## NOAA

- Texas receives approximately \$2M a year from the National Oceanic and Atmospheric Administration (NOAA)
- Funds are passed through to local governments and entities to address environmental needs and promote sustainable economic development along the coast

## GOMESA

- GLO receives annual Gulf of Mexico Energy Security Act (GOMESA) funds
- State funds for coastal restoration projects
- No federal nexus
- Approximately 25% of the GOMESA funds allocated to CMP
- Fund Projects of Special Merit



# Funding by Grant Type

The Land Commissioner is not obligated to award all funds.

Grant Type	Funding Source	Project Funding Range	Match	Total Funding Available	Project Length	Project Start Date
§306/ §306A	Federal (NOAA)	\$200,000 or \$400,000 max	40%	\$1.8 million	18 months	October 1, 2026
Project of Special Merit	State (GOMESA)	\$200,000 to \$5 Million	0%	~\$19 million	3 years	April 2026





# Grant Project Types

---

## Projects of Special Merit (PSM)

- GOMESA funded
- Land acquisition, construction or earth moving activities
- Non-construction activities should be large scale (e.g., regional or statewide)
- Must meet a GOMESA authorized use and directly implement a funding subpriority
- Holistically address coastal issue
  - Try to avoid phasing



# Grant Project Types

---

## GOMESA Authorized Uses

- Projects and activities for coastal protection, including conservation, coastal restoration, hurricane protection and infrastructure directly affected by coastal wetland losses
- Mitigation of damage to fish, wildlife or natural resources
- Implementation of federal approved marine, coastal or comprehensive conservation management plan
- Mitigation of the impact of OCS activities through the funding of onshore infrastructure projects



# Grant Project Types

---

## NOAA-Funded Projects

- §306/§306A
- Research and data collection that directly implement a funding priority
- Engineering and design for a future construction project
- Small-scale construction



# Eligible CMP Grant Applicants

- Incorporated cities
- County governments
- State agencies
- Public universities
- Subdivisions of the state
- Regional governments
- Galveston Bay Estuary Program

- Coastal Bend Bays and Estuary Program
- Nonprofit organizations
  - Registered §501(C)(3) or §501(C)(4)
  - Office located in Texas



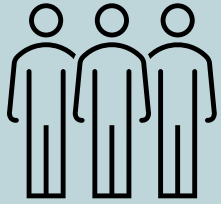
# Geographic Boundaries

Must be located within  
the Coastal Zone  
Boundary (CZB)

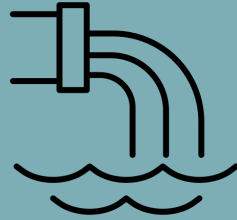
Includes portions of 18  
Texas coastal counties



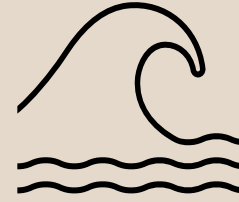
# CMP Funding Priorities



**PUBLIC  
ACCESS**



**COASTAL  
NONPOINT  
SOURCE  
POLLUTION**



**COASTAL  
HAZARDS**



**COASTAL  
HABITAT**



# Data Collection

- Data collection and modeling must directly implement a funding subpriority and be tied to a specific CCAC agency goal or initiative
- Applicants proposing a data collection project should only apply if the project is listed in the guidance document
- **Strongly suggest applicants work with a CCAC agency to develop project scopes and outcomes**

# Public Education & Outreach

Applicants are encouraged to include proactive education and/or outreach

- Research projects: disseminate information to interested parties
- Construction projects: distribute press release notifying public of new facility
- Website development: inform public of website availability





# CMP Will Not Fund

1. Research for the sake of research
  - If your project idea doesn't directly implement a funding subpriority, please look for an alternative funding opportunity.
2. Equipment purchases without purpose
3. Data collection projects not related to a CMP funding subpriority
4. Projects that only focus on education and outreach

# 306A/Construction and Land Acquisition Requirements

---

- Land must be publicly owned, leased, or protected through easement
- Lease or easement should be in perpetuity or a minimum of 20 years
- Projects must be maintained for the useful life of the project or at least 20 years
- Public access facility must be open to public, comply with ADA, and approved by Texas Accessibility Standard certified inspector
- Land acquisition projects will need a survey and appraisal that meets CMP specifications



# 306A/Construction Permitting

---



- Must be aware of permitting requirements prior to application submission
- Include appropriate tasks and budget for permit acquisition
- Submit any acquired permits and/or environmental clearances with application



# Prohibited 306A/Construction Projects

- Hard structures for erosion response, generally prohibited
- Mitigation projects UNLESS above and beyond permit requirements
- Purchasing sand for beach nourishment projects
- Projects on federally owned land (including federal lease or easement)
- Improvements to private property



# Before You Apply

Review the Cycle 31 Guidance documents prior to completing final applications

Guidance documents include:

- CMP Cycle 31 Guidance
- **CMP Cycle 31 Administrative and Financial Guidance for NOAA-funded Projects**
- **CMP Cycle 31 Administrative and Financial Guidance for Projects of Special Merit**



# Application Portal

- Application Portal Link: <https://txglo.smapply.us/>
- Link to the application portal can be found on the GLO's "Funding Opportunities" webpage

## **CMP and CEPRA Application Portal**

**This portal must be used to apply for all CMP and CEPRA projects. This portal includes the CEPRA application, the CMP NOAA-funded project application, and the CMP GOMESA-funded project (PSM) application. Applications must be completed in their entirety to be considered for funding.**

**GO TO CMP AND CEPRA APPLICATION PORTAL**



# Application

## Application Materials:

1. Project application, including tabular budget
2. Location map
3. Available permits, if applicable
4. 1-3 Letters of Support
5. Draft site plan, site photos, or final engineering and designs, if available



# Application

Project Information >

Contact Information

Project Description

Project Permitting

CMP - Tabular Budget

Upload Additional Documentation

0 of 6 tasks complete

REVIEW SUBMIT

## Goal Statement

In 1-3 sentences, provide a clear, concise statement of what this project will accomplish. Consider this the "elevator pitch" for the proposed project. Example: *The goal of this project is to increase public access by building three pavilions in the County park. This project will complete engineering and design, permitting and construction.*

(Word Limit: 150)





# Key Dates

	NOAA Funded Projects	Projects of Special Merit
June 4, 2025	Application due	
August 2025	Conditional funding notification letters sent	
November 12, 2025	Supplemental documentation due	
January 2026	Final funding notification letters sent	
March 2026		Final funding notification letters sent
April 2026	GLO submits projects to NOAA	Projects eligible to begin
October 2026	GLO receives NOAA approval and projects start	All projects have begun



# Project Budgets

- See budget tips on handout!
- CMP is a reimbursement-based program. Please only request what you can use. Unused project funds count against you for future projects.
- Just because a project is approved for funding doesn't mean the full amount requested will be awarded or all proposed expenditures will be approved.
- Supporting documents/proof of payment are needed for all reimbursement request this includes local and 3<sup>rd</sup> party match.
- Purchases not included as a reimbursable item in the application/ workplan development require prior approval from the GLO.



# Unallowable Costs

- Alcohol
- Contingency
- Entertainment
- Fund-raising
- Tips
- Food (not associated with travel)
- Snacks/drinks for employees/volunteers
- Travel for Volunteers
- T-shirts, caps, etc. for Volunteers

Unallowable costs are ineligible for reimbursement and prohibited for use as match regardless of whether the cost was disclosed in the application.



# CMP Grants Team

Contact us with questions:

**Julie McEntire**

Director of Grant Programs  
Julie.mcentire@glo.texas.gov  
(512) 475-0216

**Jessica Chappell**

CMP Project Manager  
Jessica.chappell@glo.texas.gov  
(512) 463-5818

**Andrea Walms**

Financial Manager  
Andrea.Walms@glo.texas.gov  
(512) 463-2572

**Meghan Martinez**

CMP Project Manager  
Meghan.martinez@glo.texas.gov  
(512) 463-8753



**Application Portal link is here:**

<https://www.glo.texas.gov/coastal/protecting-coast/funding-opportunities>

Texas General Land Office  
Commissioner Dawn Buckingham, M.D.

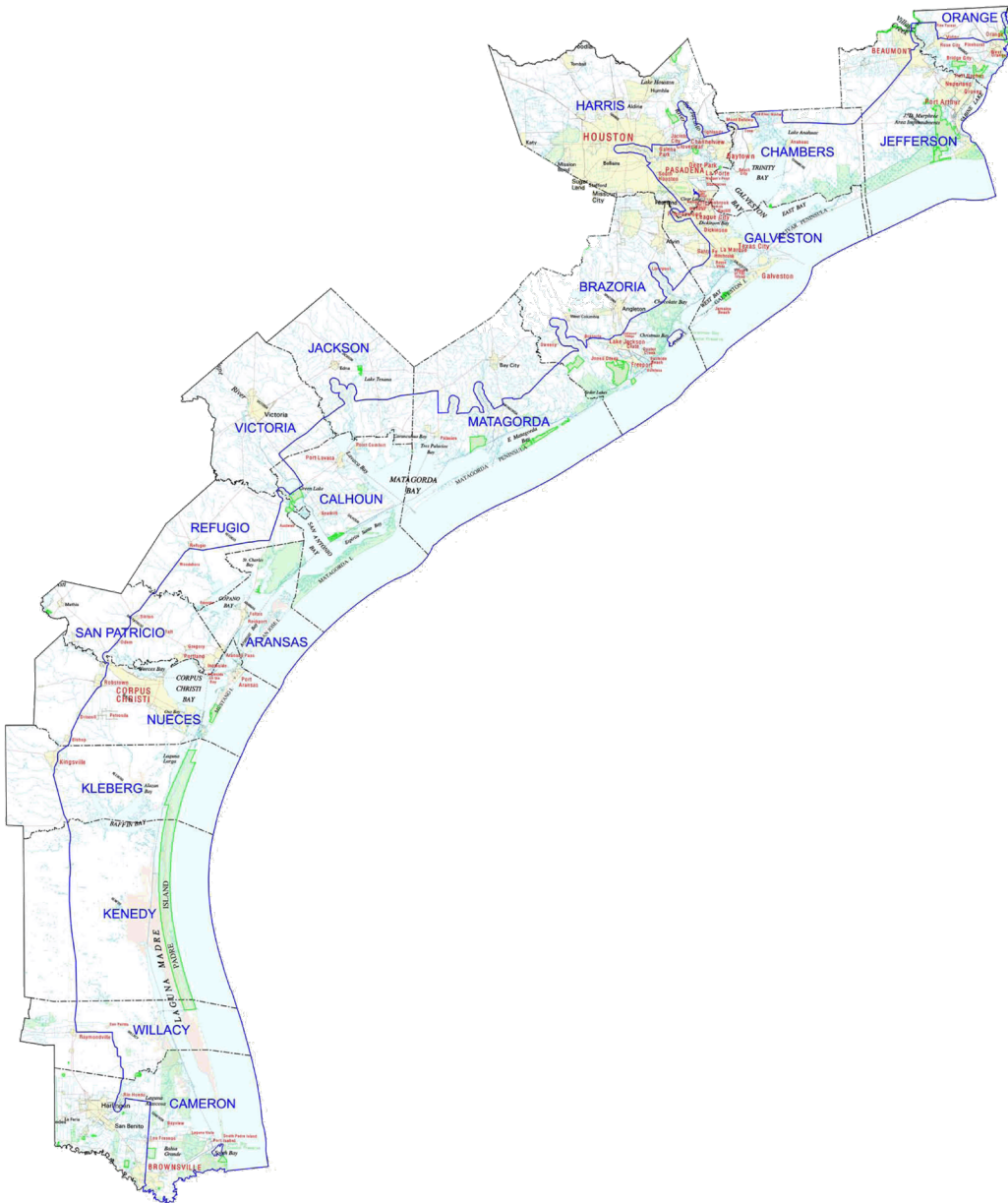




# Coastal Resources CEPRA Program

Texas General Land Office • Commissioner Dawn Buckingham, M.D.

# Stewards of the Texas Coast

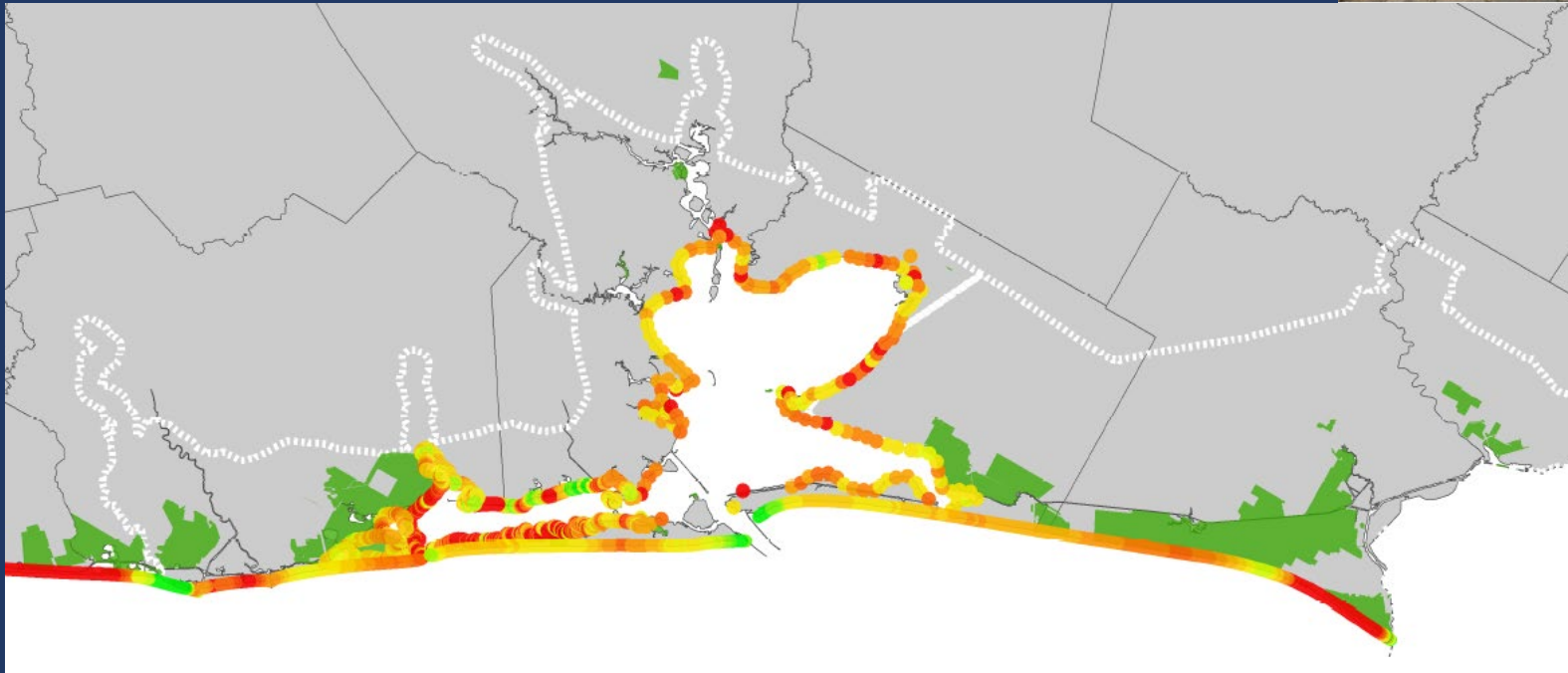


- 367 miles of gulf shoreline
- 3,300 miles of bay shoreline
- 18 coastal counties with 6.1 million residents (2010)
- 2 peninsulas and 6 barrier islands (including longest undeveloped barrier island in the world)



# Coastal Erosion Data

## Region 1

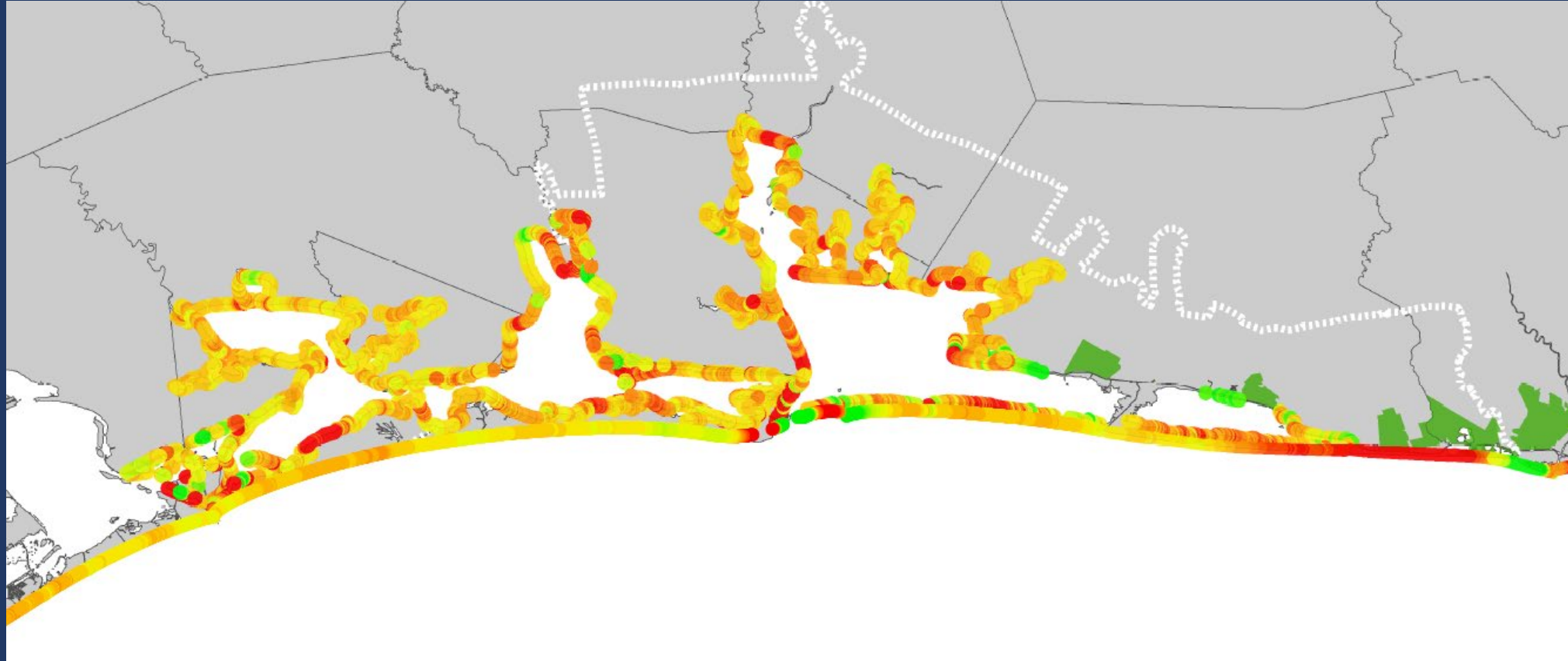


Texas General Land Office  
Commissioner Dawn Buckingham, M.D.



# Coastal Erosion Data

## Region 2



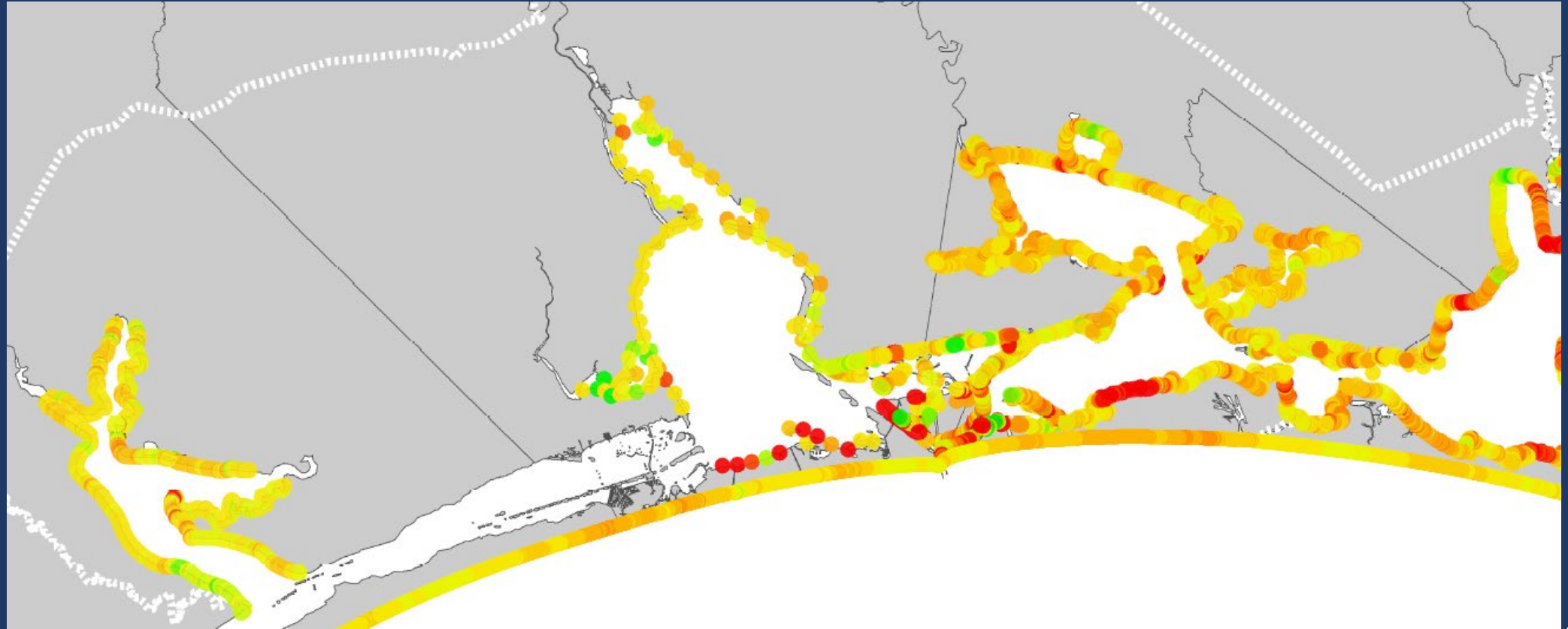
Texas General Land Office  
Commissioner Dawn Buckingham M.D.





# Coastal Erosion Data

## Region 3

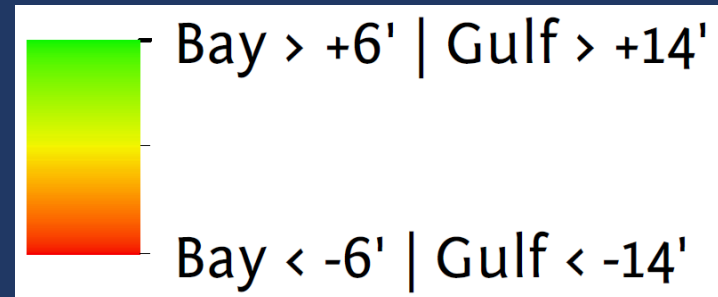
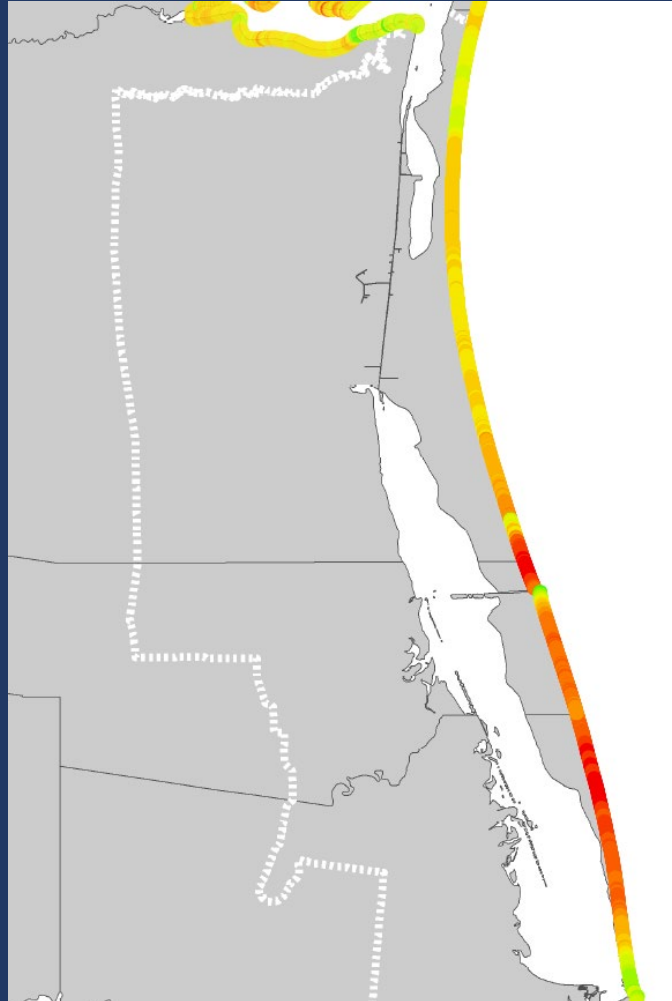


Texas General Land Office  
Commissioner Dawn Buckingham M.D.



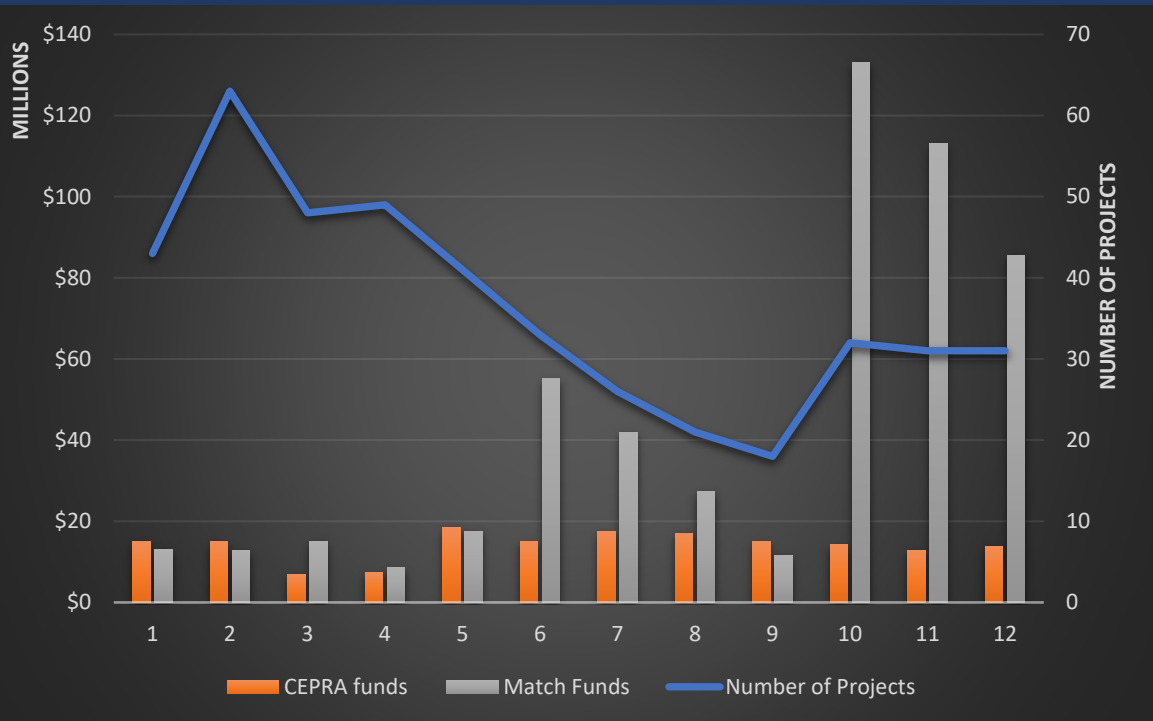
# Coastal Erosion Data

## Region 4



# CEPRA History

1999 – Passage of the Coastal Erosion Planning & Response Act implements the CEPRA program on a biennium cycle that matches state-appropriated funds with local match funds



- **\$168.1M in funding for the state**
- **\$534.5M in funding from project partners**
- **436 projects total**



# CEPRA Project Requirements

- ✓ Located in coastal zone boundary
- ✓ Full site access
- ✓ Gulf facing beaches have erosion rate of  $> 2$  ft/yr
- ✓ Construction possible within two-year funding cycle (preferred)
- ✓ Complies with Open Beaches Act and Dune Protection Act
- ✓ Erosion Response Plan filed (if applicable)
- ✓ Local match
  - Beach Nourishment – 25% min. partner match (can include dune restoration)
  - All other project types require a 40% min. partner match



# CEPRA Project Types

- Data Collection & Studies
- Beach Nourishment - Gulf and Bay Beaches
- Dune Restoration
- Shoreline Stabilization
- Marsh/Habitat Restoration
- Beneficial Use of Dredged Material
- Structure Relocation



# Data Collection & Studies

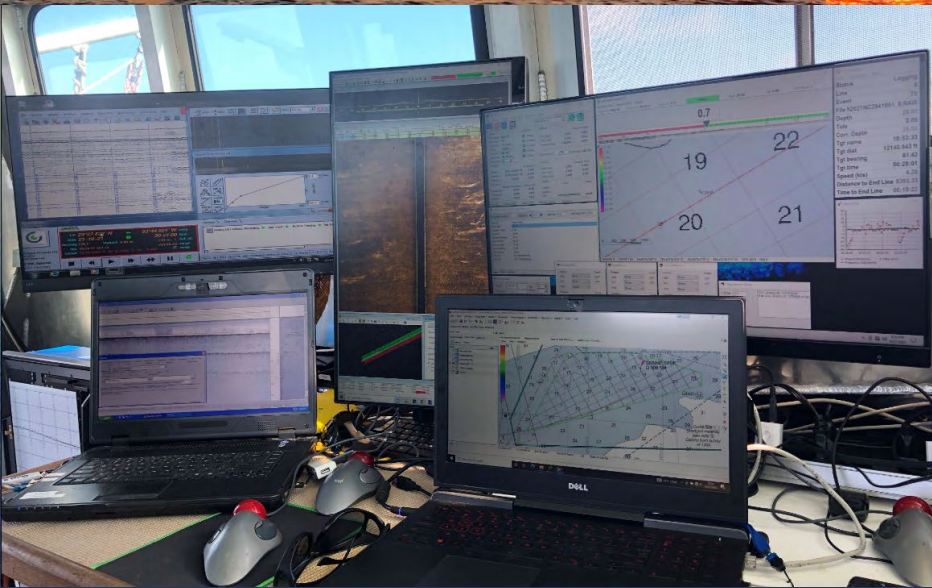


## Data Collection Examples

- Historical Erosion Rates and determination of critically eroding areas
- Aerial Photography
- Geotechnical Investigations for Sand Sources

## Study Examples

- Beach Monitoring and Maintenance Plan
- Sediment Management Plan and Offshore Sediment Surveys
- Economic & Natural Resource Benefit Studies of CEPRA Projects
- Coastwide Projects from the 2019 Resiliency Plan – Longshore Transport Modeling
- Demonstration Projects



*HRG  
Computers  
Onboard*

Texas General Land Office  
Commissioner Dawn Buckingham M.D.





# Gulf Beach Nourishment

Galveston Island West of Seawall

---



---

**Galveston County, 2014**

---

Texas General Land Office  
Commissioner Dawn Buckingham M.D.





# Beneficial Use of Dredged Material

South Padre Island  
BUDM from Brownsville Ship Channel

---



---

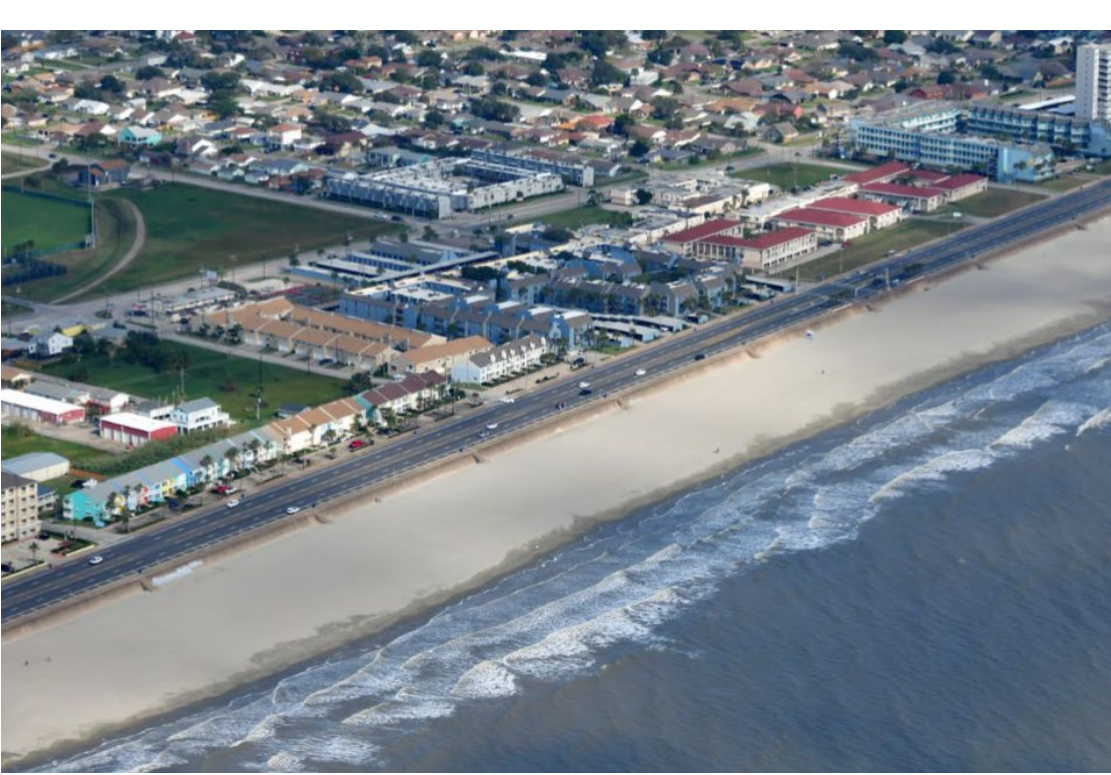
Cameron County, 2021

---

Texas General Land Office  
Commissioner Dawn Buckingham M.D.

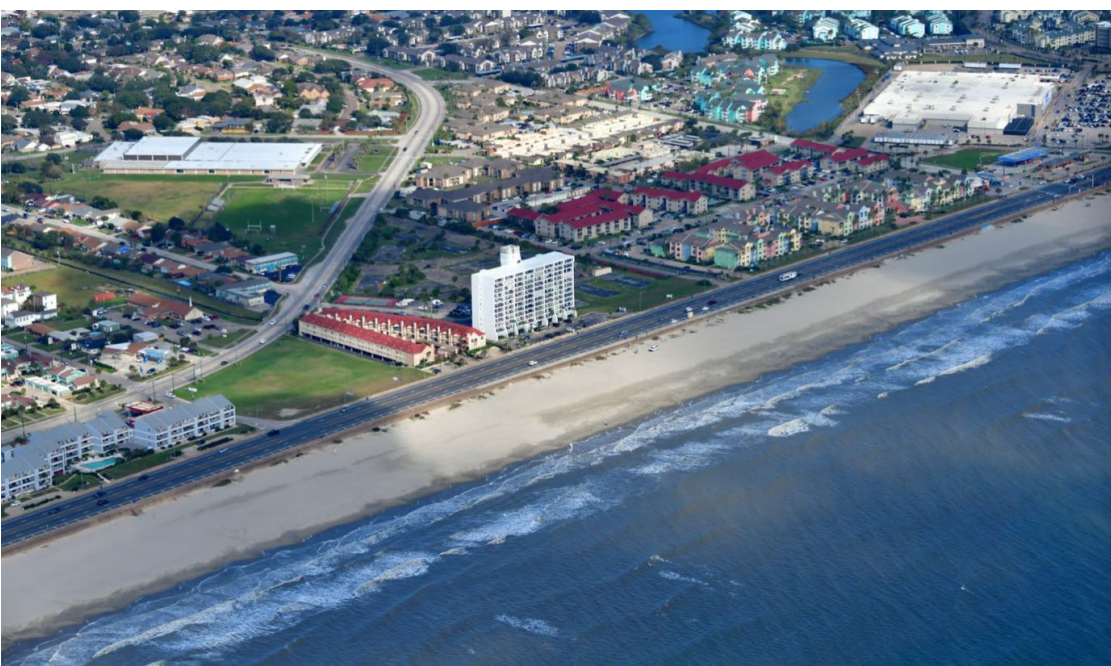






# Gulf Beach Nourishment

Galveston Island



---

Galveston County, 2021

---

Texas General Land Office  
Commissioner Dawn Buckingham M.D.



# Bay Beach Nourishment

Rockport Beach

---



---

**Aransas County, 2016**

---

Texas General Land Office  
Commissioner Dawn Buckingham M.D.





# Bay Beach Nourishment

Indianola Beach



---

**Calhoun County, 2003**

---

Texas General Land Office  
Commissioner Dawn Buckingham M.D.





# Bay Beach Nourishment

North Beach

---

**Nueces County, 2023**

---

Texas General Land Office  
Commissioner Dawn Buckingham M.D.



# Dune Restoration



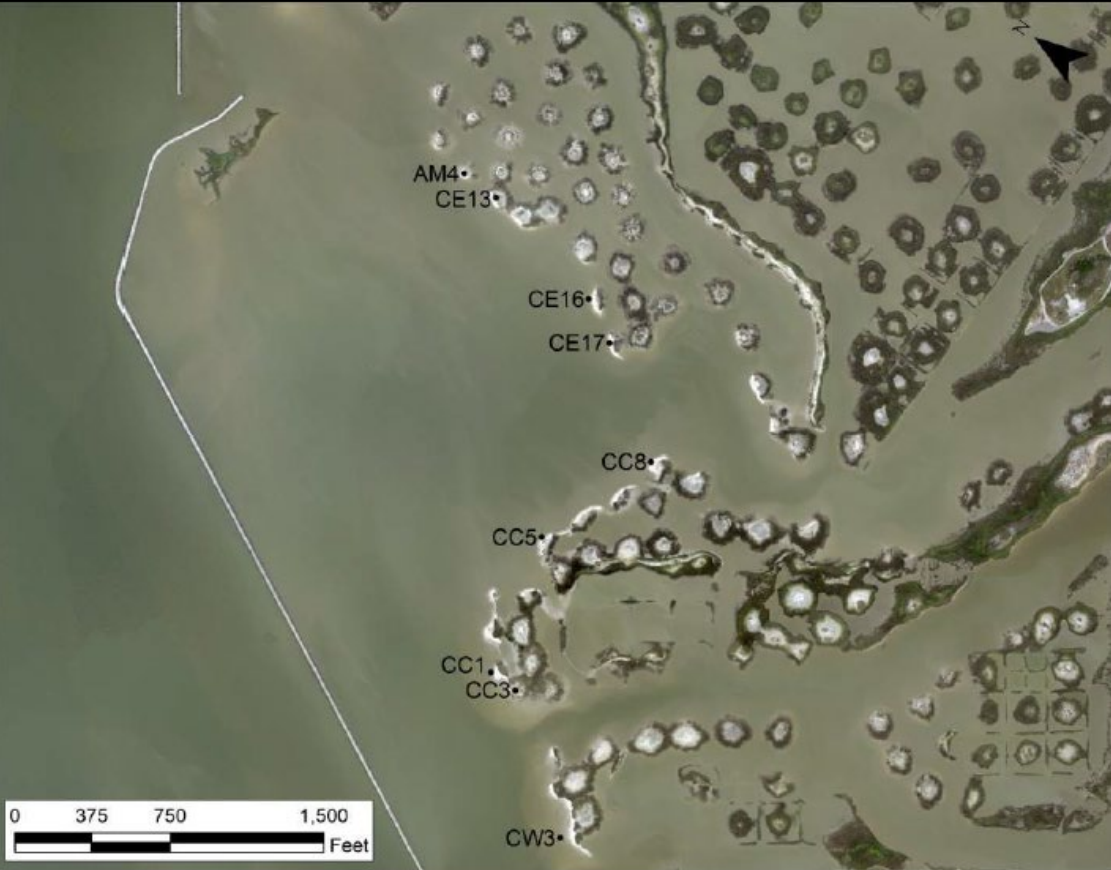
Jefferson County, 2016 and 2022

Texas General Land Office  
Commissioner Dawn Buckingham M.D.



# Marsh/Habitat Restoration

Galveston Island State Park



Galveston County, 2022

Texas General Land Office  
Commissioner Dawn Buckingham M.D.





# Marsh/Habitat Restoration

Causeway Rookery Island

---



---

**Nueces County, 2022**

---

Texas General Land Office  
Commissioner Dawn Buckingham M.D.





# Marsh/Habitat Restoration

Nueces Bay Portland Causeway Marsh

---

---

Nueces and San Patricio County, 2015

---

Texas General Land Office  
Commissioner Dawn Buckingham M.D.







# Marsh/Habitat Restoration

Arturo Galvan Coastal Park Living Shoreline

---

---

**Cameron County, 2015**

---

Texas General Land Office  
Commissioner Dawn Buckingham M.D.



# Shoreline Stabilization

Moses Lake

---

---

Galveston County, 2015

---



Texas General Land Office  
Commissioner Dawn Buckingham M.D.



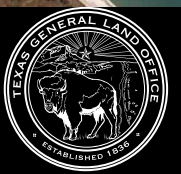
# Shoreline Stabilization

Port Aransas Nature Preserve



Nueces County, 2013

Texas General Land Office  
Commissioner Buckingham M.D.



# Shoreline Stabilization

Indian Point



Nueces and San Patricio County, 2019

Texas General Land Office  
Commissioner Dawn Buckingham M.D.





Google Earth

Audubon | TEXAS

# Beneficial Use of Dredged Material

## Chester Island



## Matagorda County, 2017

Texas General Land Office  
Commissioner Dawn Buckingham M.D.



# CEPRA Cycle 14 Key Dates

---

May 1, 2025

- Submit application by Thursday, May 1 at 5 p.m.
- <https://www.glo.texas.gov/coastal/protecting-coast/funding-opportunities>

Fall 2025

- Receive notification regarding status categorization of project
- Projects eligible to start once CPCA is executed





**Kevin Frenzel**

CEPRA Program Manager  
[kevin.frenzel@glo.texas.gov](mailto:kevin.frenzel@glo.texas.gov)  
(512) 463-2482

**Kelly Brooks**

Project Manager/Team Lead  
[kelly.brooks@glo.texas.gov](mailto:kelly.brooks@glo.texas.gov)  
(512) 463-2198

**Thomas Durnin**

Project Manager  
[thomas.durnin@glo.texas.gov](mailto:thomas.durnin@glo.texas.gov)  
(512) 463-1192

**Carver Wray**

Project Manager  
[carver.wray@glo.texas.gov](mailto:carver.wray@glo.texas.gov)  
(512) 463-1864

**Kristin Hames**

Project Manager  
[kristin.hames@glo.texas.gov](mailto:kristin.hames@glo.texas.gov)  
(512) 463-9271

**Rita Setser**

Project Manager  
[rita.setser@glo.texas.gov](mailto:rita.setser@glo.texas.gov)  
(512) 463-5029

**Abigail Richardson**

Project Manager  
[abigail.richardson@glo.texas.gov](mailto:abigail.richardson@glo.texas.gov)  
(512) 475-5400

Texas General Land Office  
Commissioner Dawn Buckingham M.D.

