



**Matagorda County Texas Diversion Bypass Cut Project**

## Initial Clearing along Proposed Channel Alignment



09.13.2011

# Channel Excavation



10.12.2011

# Channel Excavation



10.26.2011

# Initial Delivery of Mattresses



10.12.2011

**Typical Articulated Concrete Block Mattress,  
Footprint of 8 Feet by 29 Feet**



10.12.2011

## Mattress Placement on Channel Bottom



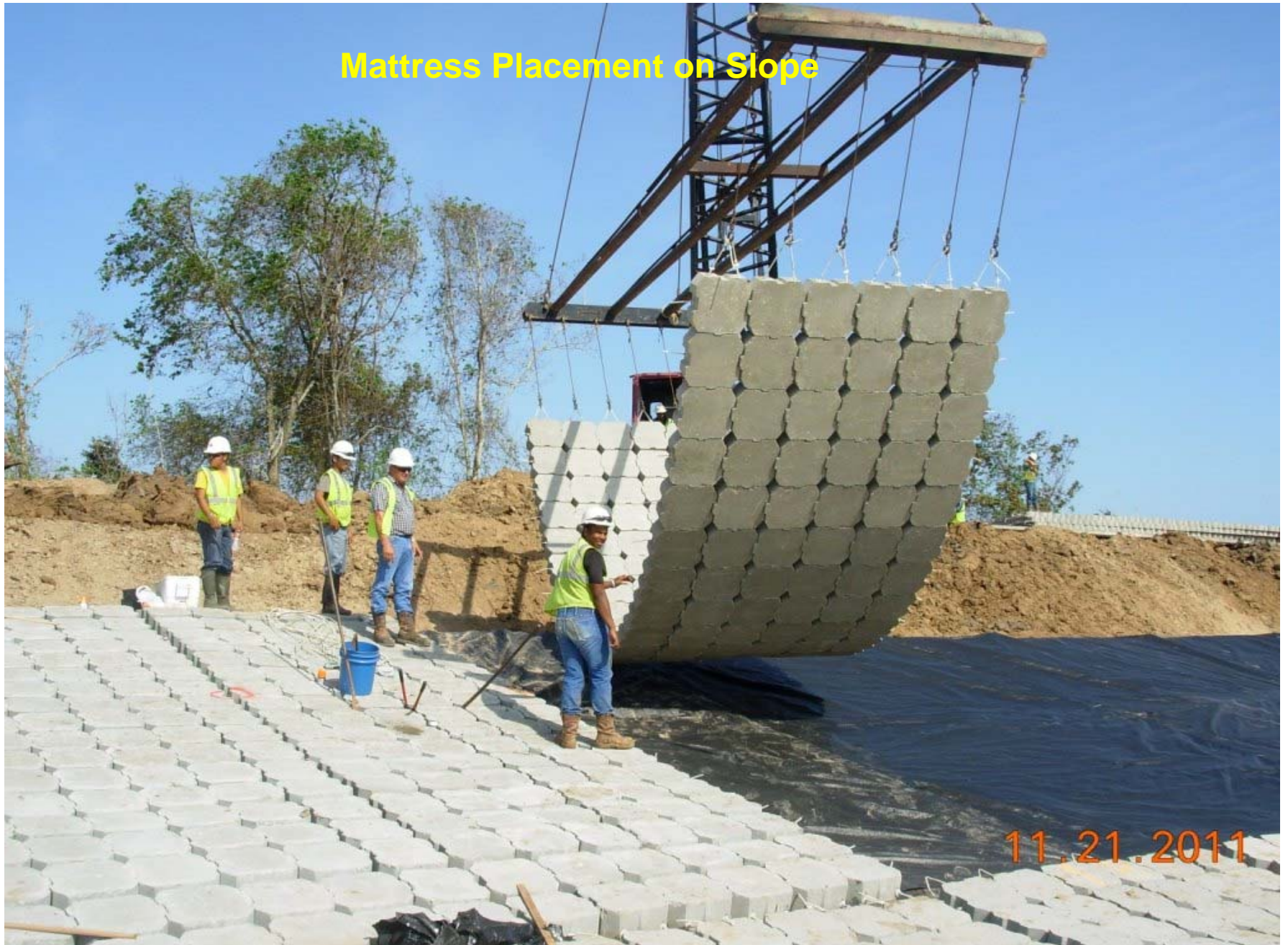
## Mattress Placement on Channel Bottom



11.04.2011



## Mattress Placement on Slope



11.21.2011

# Mattress Placement on Slope



11.29.2011

## Piling for Channel Markers



12.13.2011

# Flooding of Channel



01.07.2012

# Underwater Placement of Mattresses Using Divers



01.24.2012

## Placing Turf Reinforcement Mats over Hydro-mulched Slopes



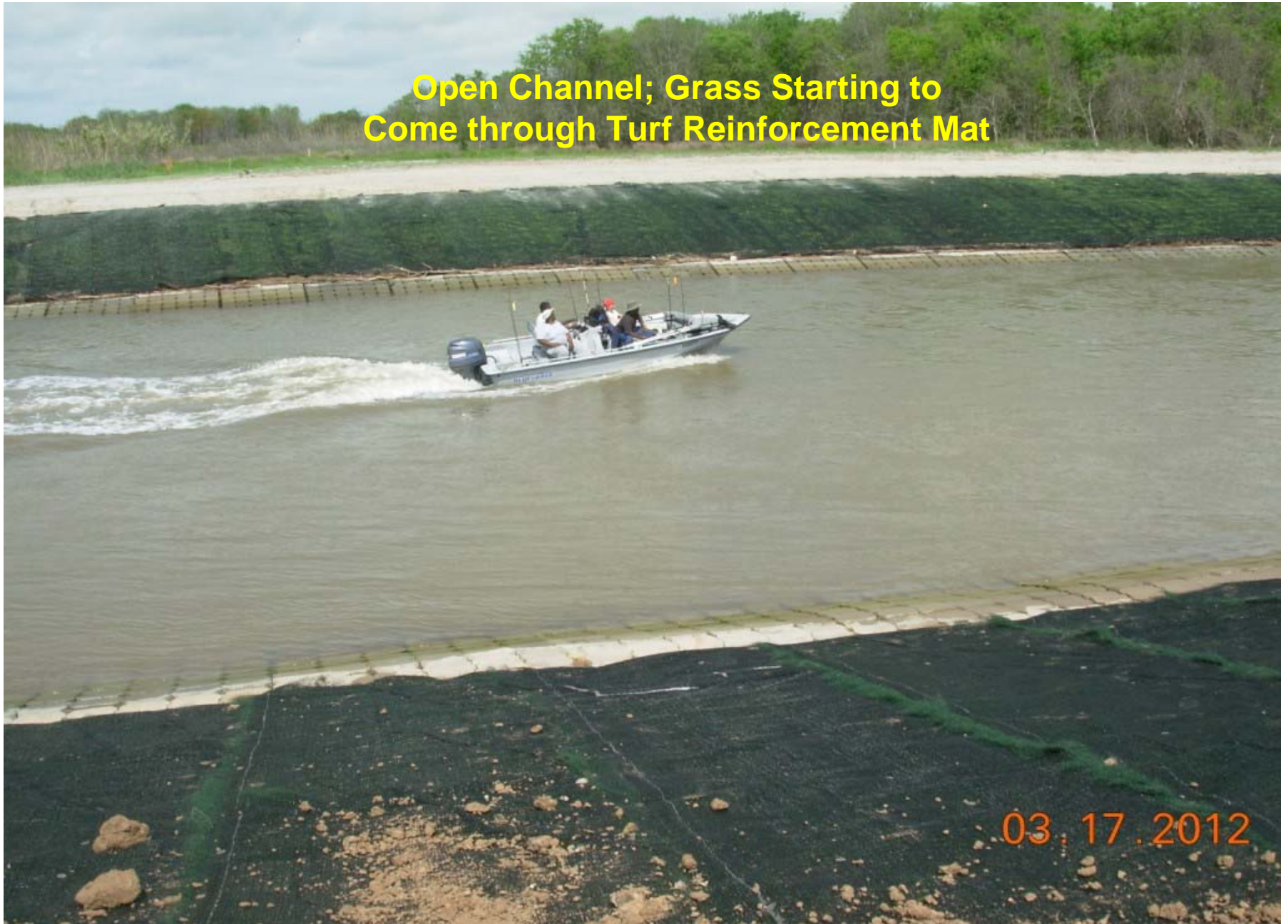
03.07.2012

# After Opening of Channel



03.17.2012

**Open Channel; Grass Starting to  
Come through Turf Reinforcement Mat**



03.17.2012



# Aerial View of Completed Project

