

# HURRICANE HARVEY: TEXAS AT RISK



*Texas General Land Office*

*Christa Lopez*

*CDR – Director*



# Overview

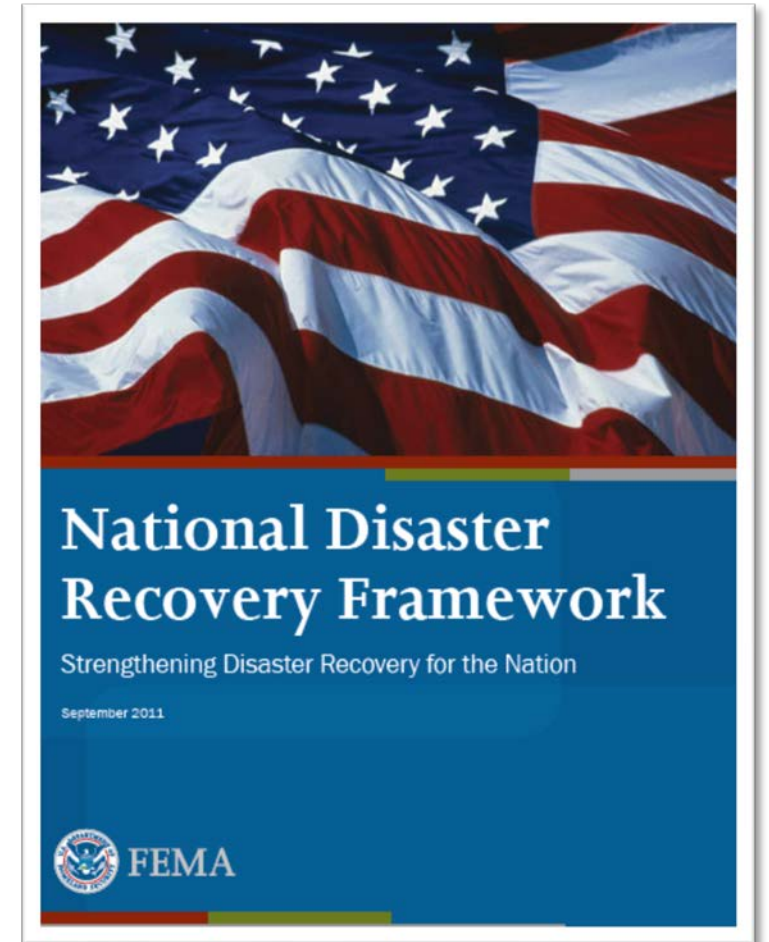
**Today we will review...**

- **National Disaster Recovery Framework**
- **Federal Resources**
- **Pre-Disaster Recovery Plan**
- **Tools and Resources**



# NDRF

- Recovery principles
- Roles and responsibilities
- Coordinating structure
- Planning guidance
- Overall process for sustainability
- Recovery Support Functions (RSFs)





# National Disaster Recovery Framework (NDRF)

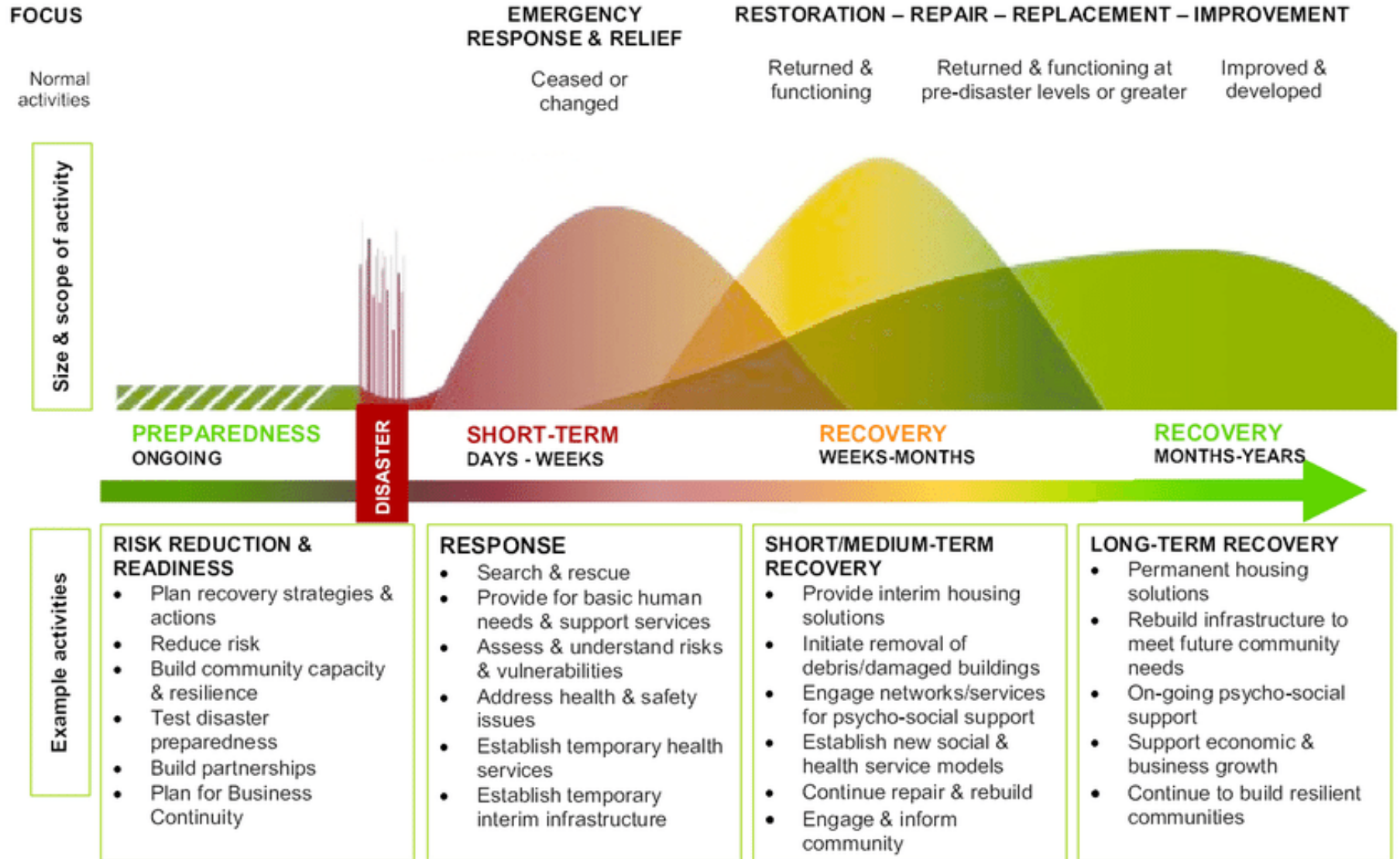


National Disaster  
Recovery Framework

FEMA



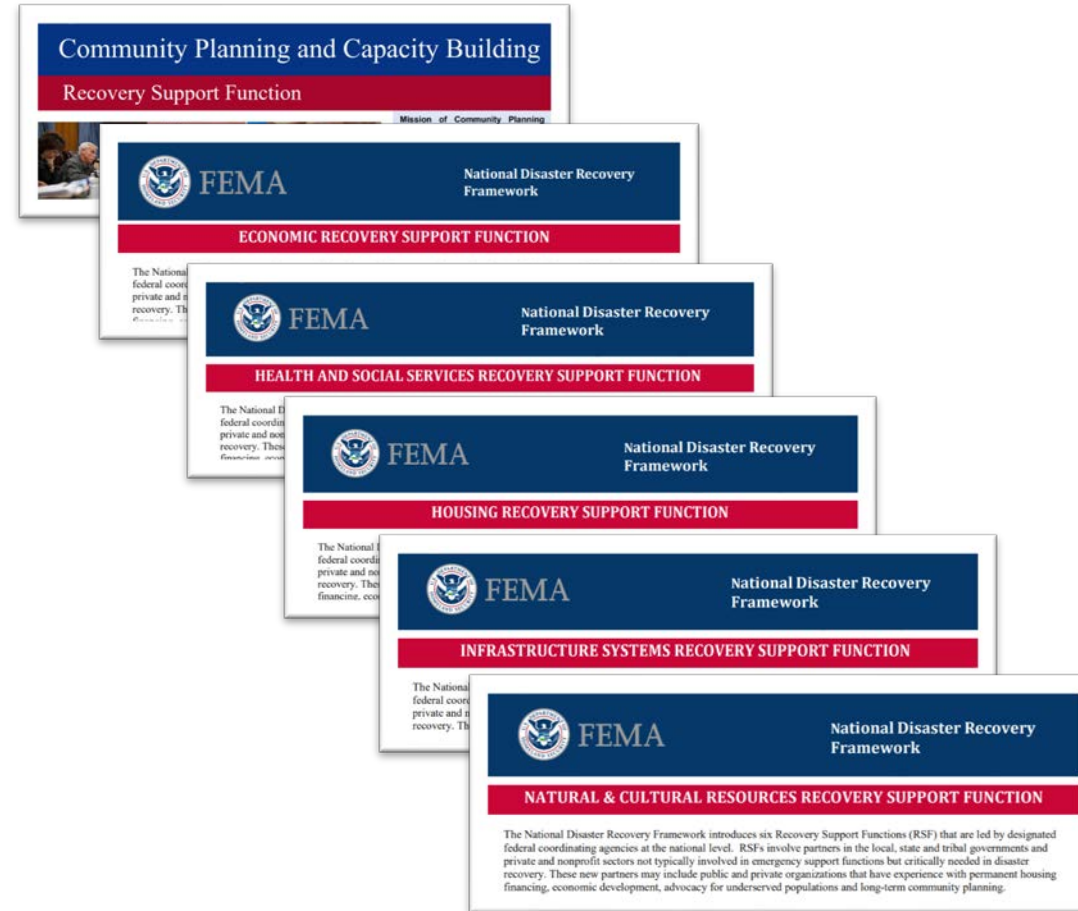
# NDRF Recovery Continuum





# Recovery Support Functions (RSFs)

- Community Planning & Capacity Building
- Economic
- Health and Social Services
- Housing
- Infrastructure Systems
- Natural and Cultural Resources





# How has NDRF worked in Harvey Recovery?

- **Economic RSF**
- **Health and Social Services RSF**
- **Housing RSF**



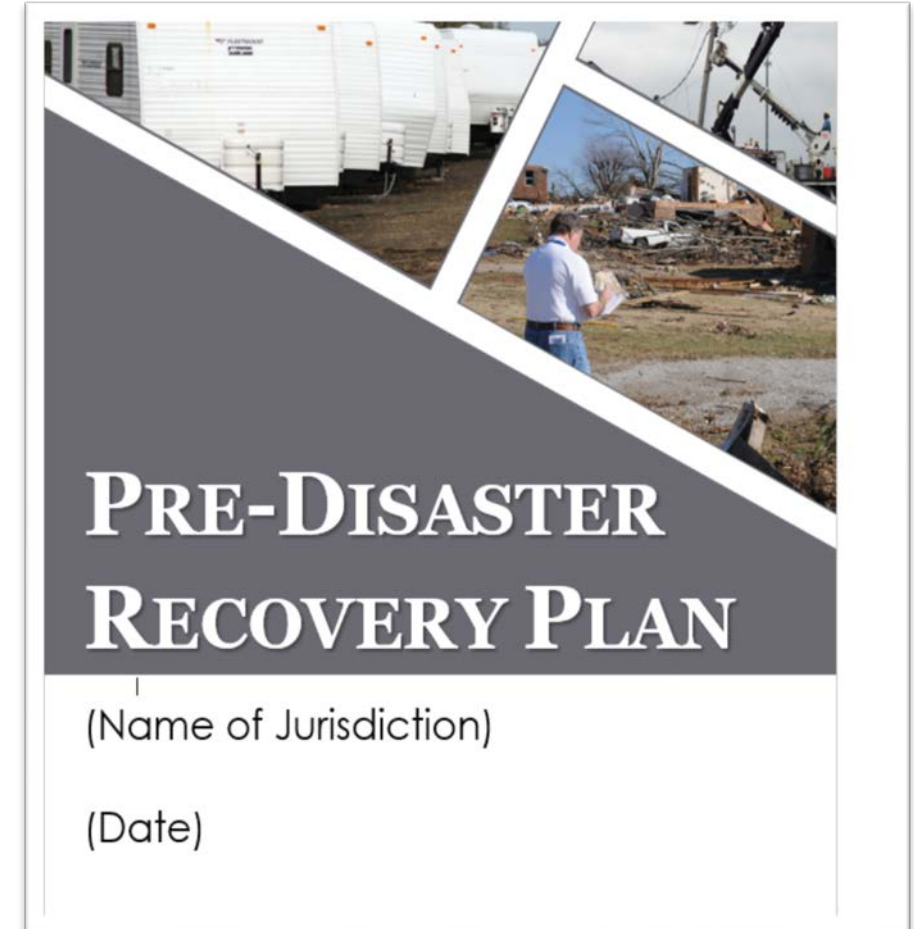
# Pre- and Post- Disaster Recovery Plans

## Pre-Disaster Recovery Plan

- Structure for managing recovery
- General policies and guidelines
- Hazard mitigation
- Adjustments in land-use policy and priorities
- Policies for funding of recovery activities.
- Identify recovery resources

## Post-Disaster Recovery Plan

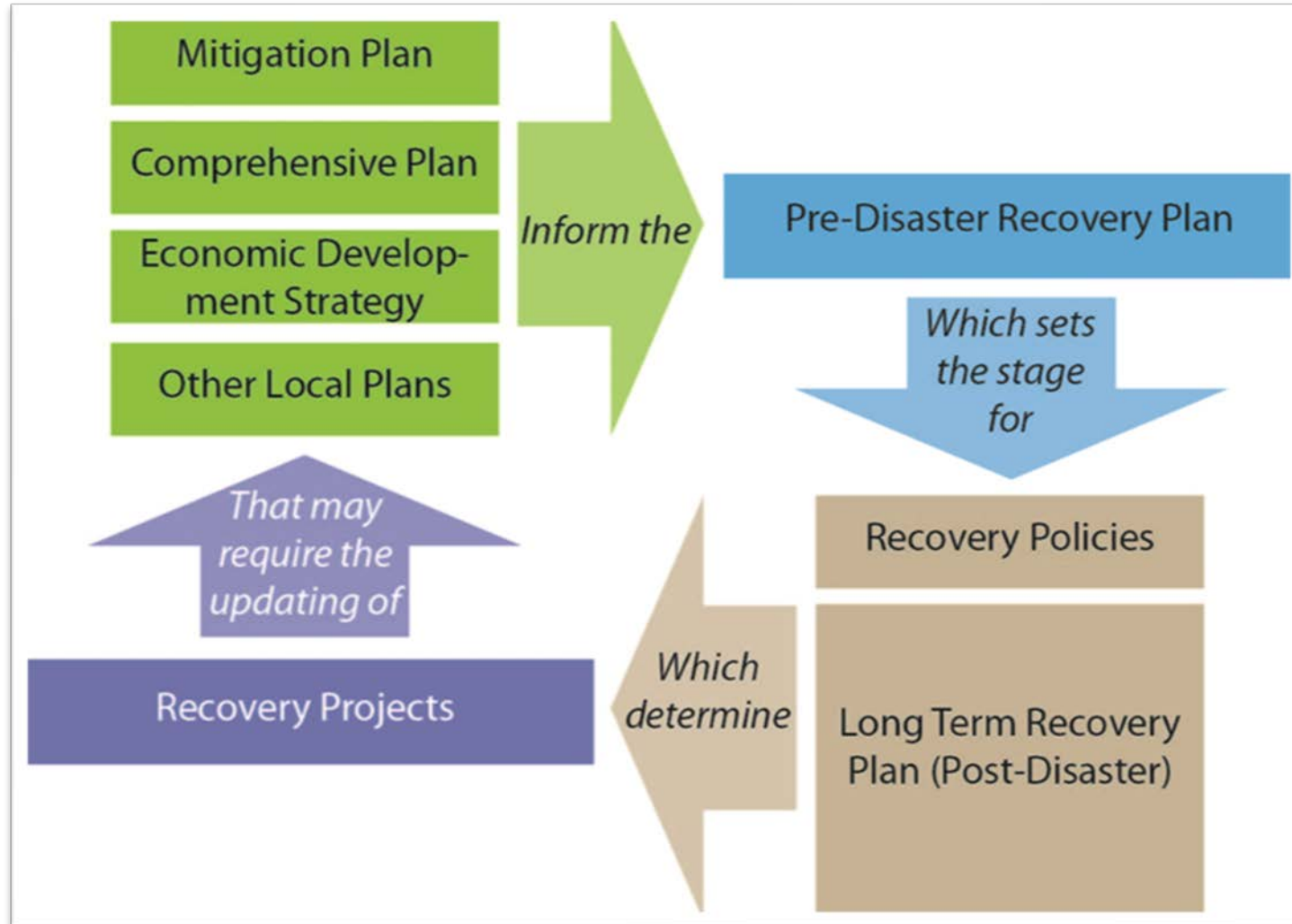
- Developed after disaster has occurred to deal directly with the known consequences.







# How Plans Connect

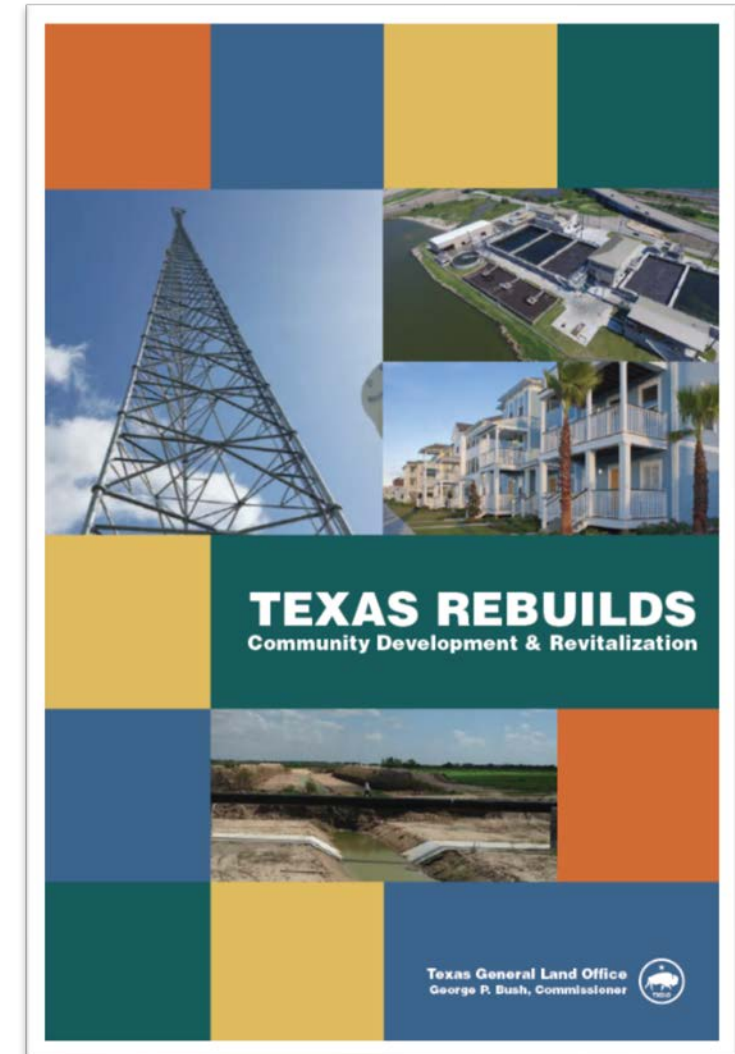




# Staffing

Local governments will need adequate numbers of trained staff to manage the workload of recovery efforts

- What does your jurisdiction's needs look like
- Is staffing included in your recovery plan or other plans





# Federal Programs

## *Federal Disaster Assistance Response and Recovery Programs: Brief Summaries*



**Congressional  
Research Service**

Informing the legislative debate since 1914

### **Federal Disaster Assistance Response and Recovery Programs: Brief Summaries**

**Maria Kreiser**  
Senior Research Librarian

**Maura Mullins**  
Research Librarian

**Jared C. Nagel**  
Senior Research Librarian

June 20, 2018

**Congressional Research Service:  
June 20, 2018**



# Tools and Resources

## Tools

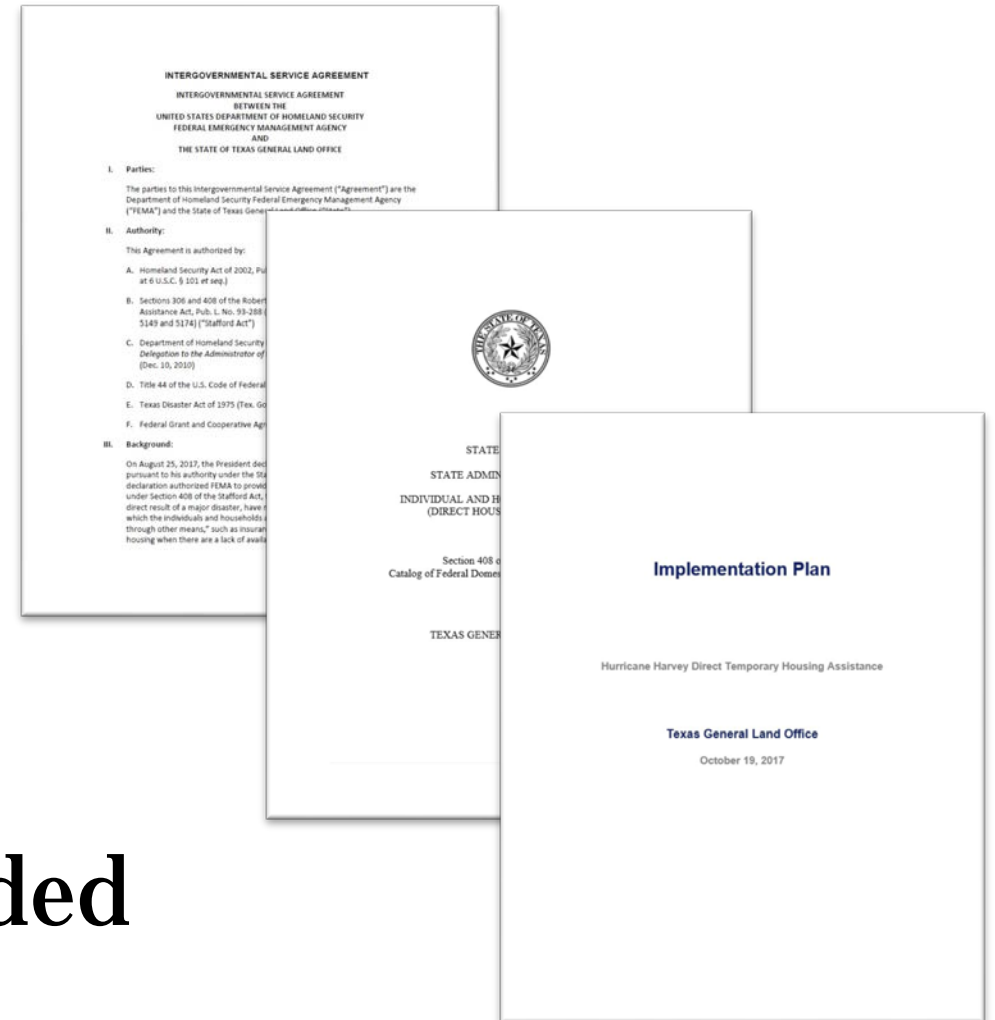
Surface HUBs

Recovery Accounts

## Resources

Pre-plan

What other resources are needed





# Exercise and Capacity Review

- Use locally based direct housing scenario
- Discuss the Direct Housing plan
- Discuss how to remove roadblocks; pre-planning
- Shape expectations of public regarding recovery
- Draft coordinated messaging plans
- Gather capacity information



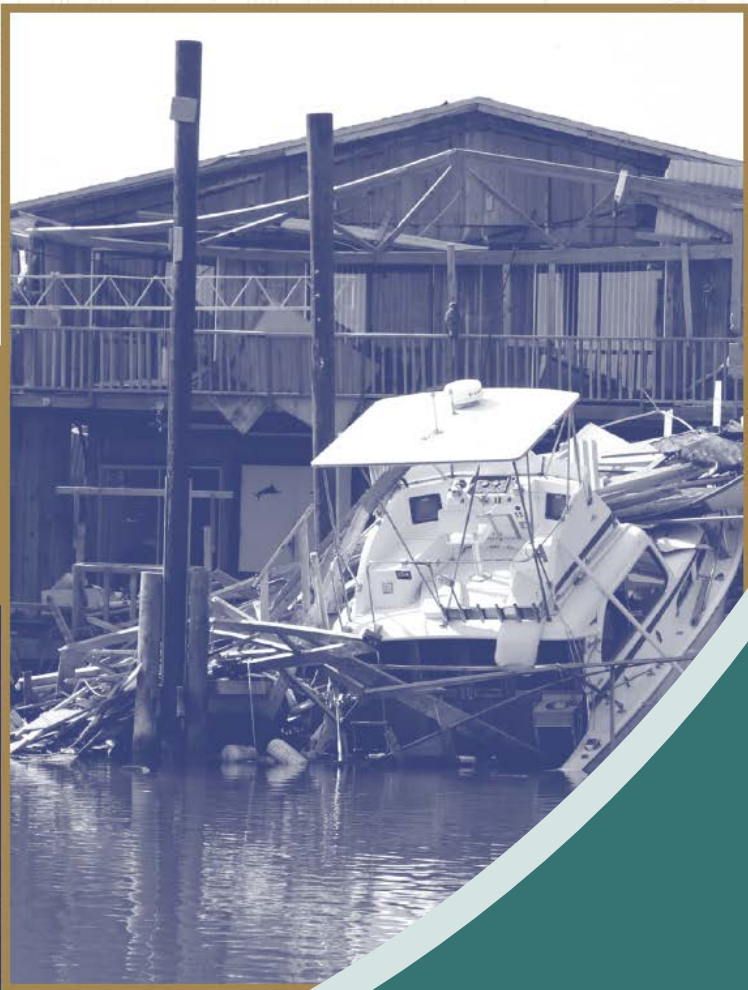
# Recovery Project Presentation



May 2, 2012 -- Wilmington, Vermont

FEMA

# HURRICANE HARVEY: TEXAS AT RISK



*Texas General Land Office*

*Questions?*

*512.475.5000*

*cdr@glo.texas.gov*