

# Coastal Bend Bays & Estuaries Program

Protecting and Restoring the Bays & Estuaries  
of the Texas Coastal Bend



Rosario Martinez  
Senior Project Manager  
[rmartinez@cbbep.org](mailto:rmartinez@cbbep.org)

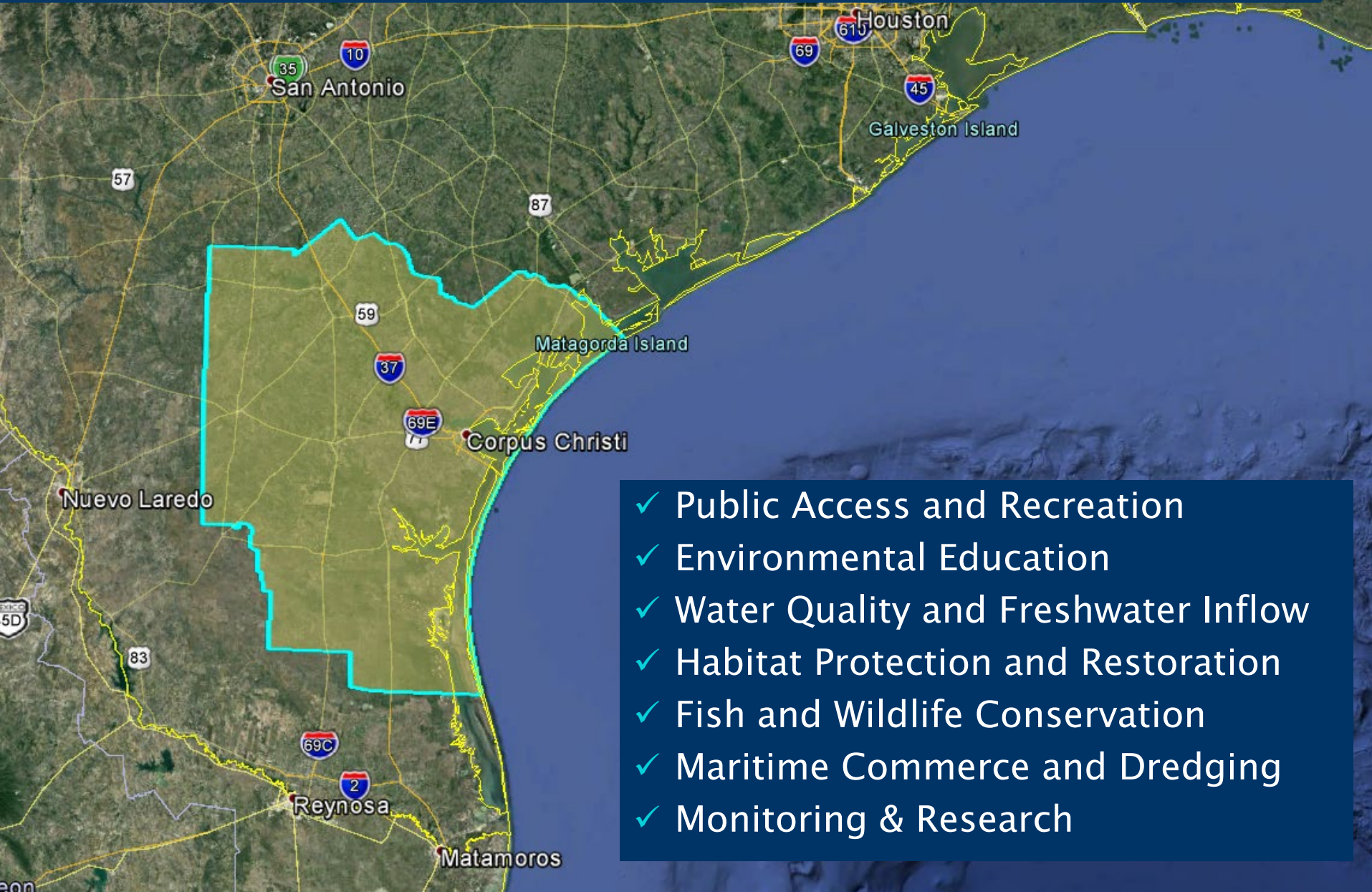
# Coastal Bend Bays & Estuaries Program

Coastal Bend Bays & Estuaries Program is dedicated to protecting and restoring the health and productivity of the bays and estuaries in the Texas Coastal Bend, while supporting continued economic growth and public use of the bays.

- Local non-profit 501(c)(3) • Established in 1999
- Non-regulatory, voluntary partnership effort

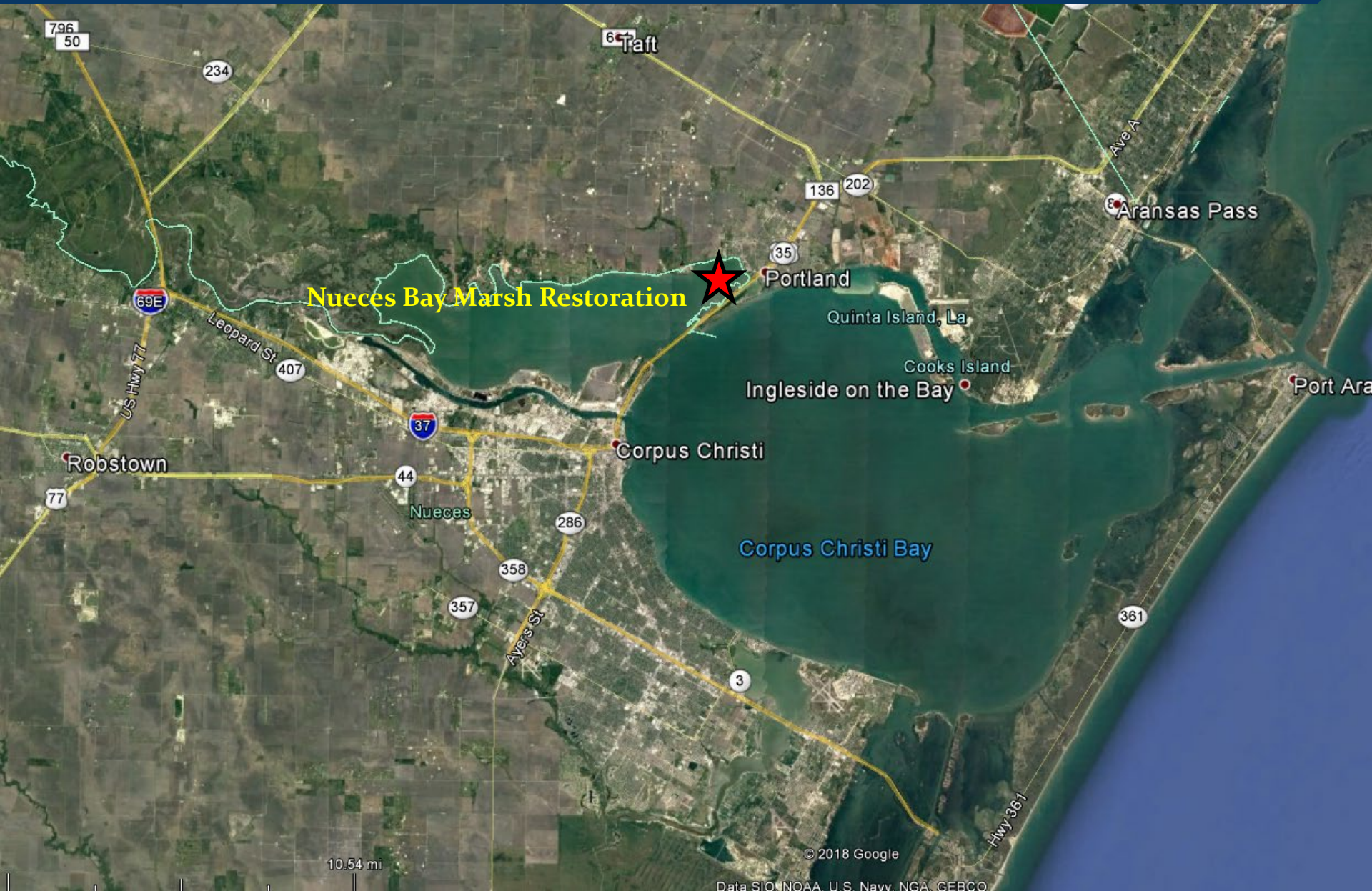


# Priorities



- ✓ Public Access and Recreation
- ✓ Environmental Education
- ✓ Water Quality and Freshwater Inflow
- ✓ Habitat Protection and Restoration
- ✓ Fish and Wildlife Conservation
- ✓ Maritime Commerce and Dredging
- ✓ Monitoring & Research

# Nueces Bay Marsh Restoration



# Nueces Bay Marsh Restoration

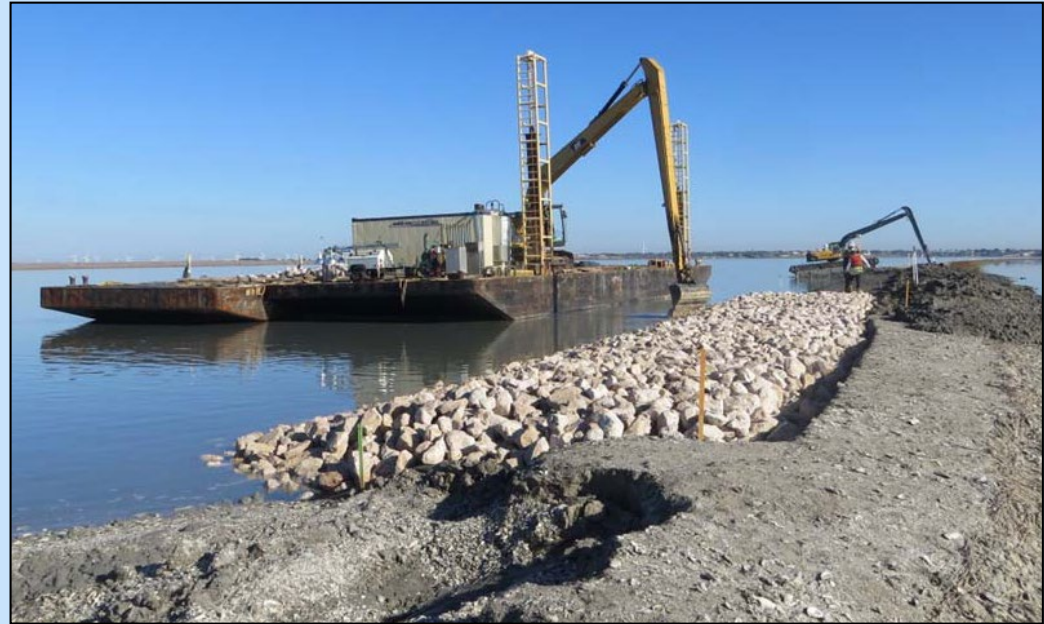
- 160 acre marsh created
- Multiple partners
- Volunteers

Funding Source	Funding Amount
Coastal Conservation Association	\$24,000
GLO Coastal Impact Assistance Program	\$2,339,000
GLO Coastal Management Program	\$1,066,798
GLO Coastal Erosion Planning Response Act	\$475,000
Environmental Protection Agency	\$97,097
Hollomon Price Foundation	\$20,000
Texas Commission on Environmental Quality	\$799,925
USFWS Coastal Program	\$50,000
USFWS American Recovery and Reinvestment Act	\$455,000
<b>Total</b>	<b>\$5,326,820</b>



# Nueces Bay Marsh Restoration

- Placement of Rock Along Outer Berm
- Completed in January 2014



# Nueces Bay Marsh Restoration

- *Spartina alterniflora* planted along length of berm



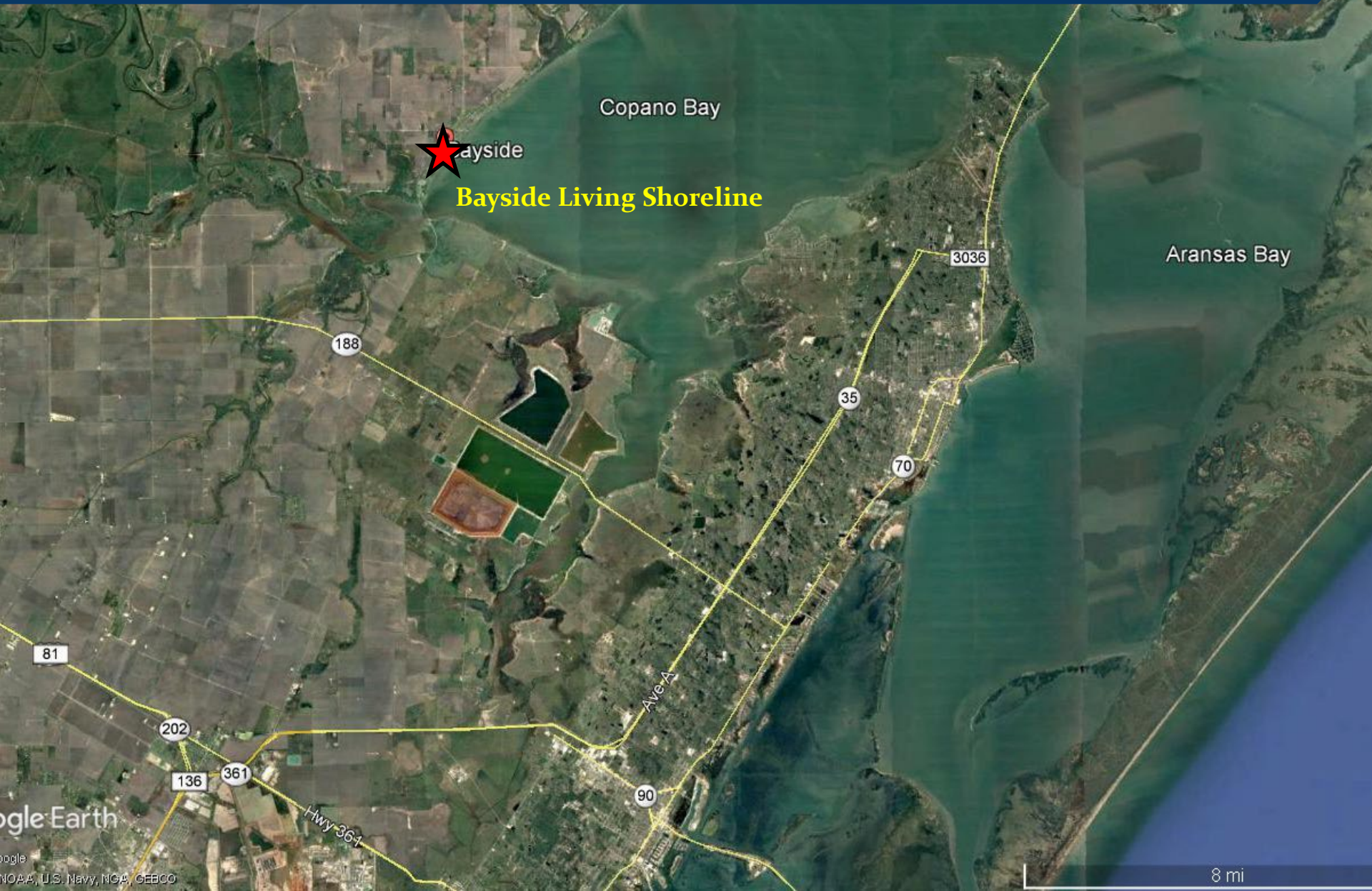
# Nueces Bay Marsh Restoration

- April 2019
- Oysters found along entire length of berm





# Driscoll Rooke Covenant Park, Bayside, TX



# Driscoll Rooke Covenant Park, Bayside, TX

- Installation of a wave break
- *Spartina alterniflora* planting
- Completed in 2003



# Driscoll Rooke Covenant Park, Bayside, TX

- Observations in 2010
- *Spartina alterniflora* expanded

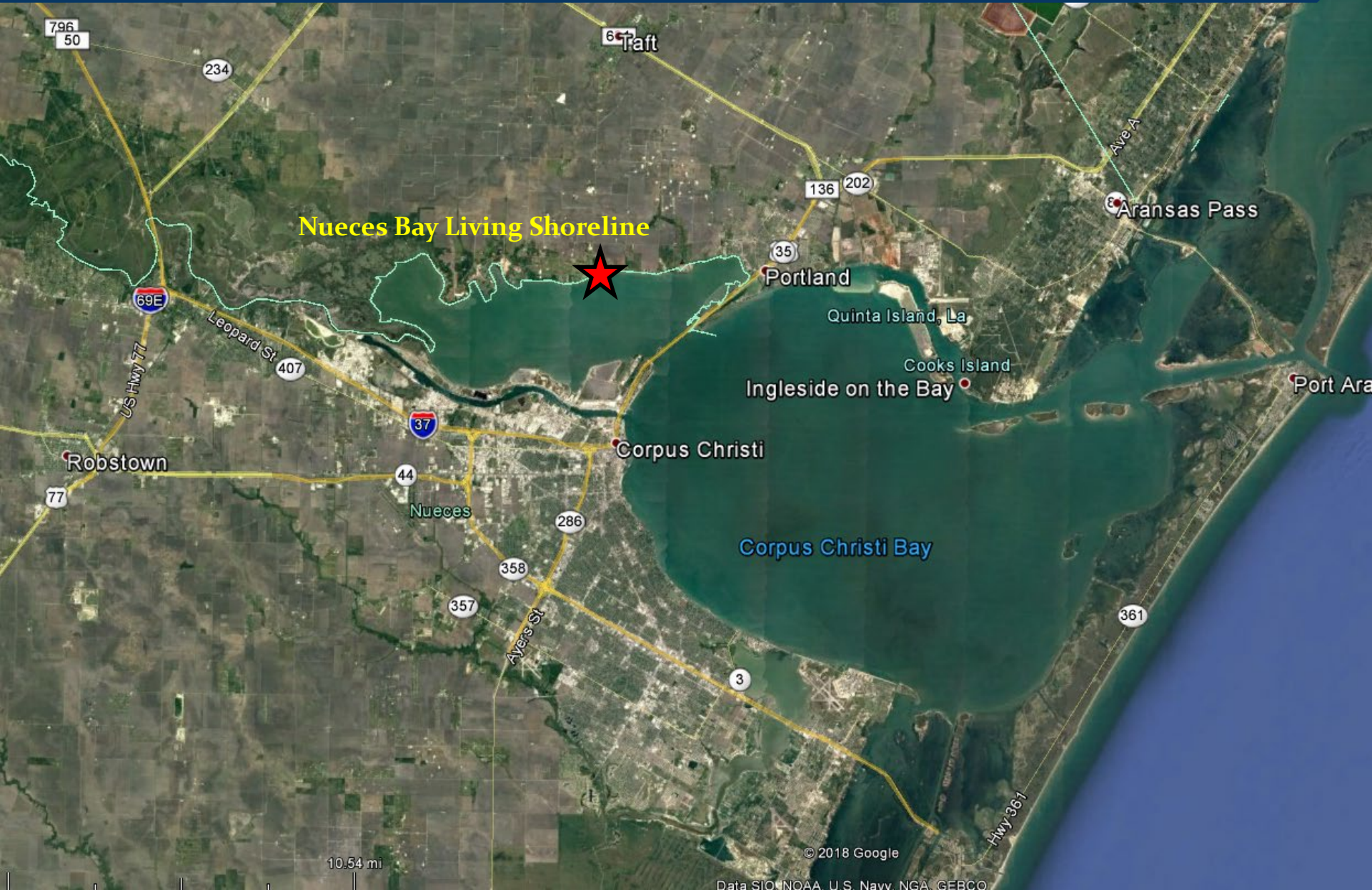


# Driscoll Rooke Covenant Park, Bayside, TX

- Observations in July 2019
- Survived Hurricane Harvey



# Nueces Bay Living Shoreline



# Nueces Bay Living Shoreline, TX

- Planted *Spartina alterniflora*
- Completed in 2003



# Nueces Bay Living Shoreline, TX

• Google Earth Image  
2004



• Google Earth Image  
2011



# Portland, Nueces Bay, TX

- Observations in July 2019
- Well Established Vegetation





# Loyola Beach, Kleberg County, TX



# Loyola Beach, Kleberg County, TX

- 150 Feet of Living Shoreline
- Erosion rate of 1.1 ft/yr
- Rock, Filter Fabric, Fill Material, Native Vegetation



- Seashore Dropseed (*Sporobolus virginicus*)
- Gulf Cordgrass (*Spartina spartinae*)
- Completed in 2003



# Loyola Beach, Kleberg County, TX

- Observations in July 2019
- Well Established Vegetation



# Contact Information

(361) 336-0304

[rmartinez@cbbep.org](mailto:rmartinez@cbbep.org)

[info@cbbep.org](mailto:info@cbbep.org)

*Stay Connected*

[www.cbbep.org](http://www.cbbep.org)



## CONTACT INFORMATION

Kiersten Stanzel  
Director of Partnerships

Coastal Bend Bays & Estuaries Program  
615 N. Upper Broadway  
Suite 1200  
Corpus Christi, TX 78401

Phone: 361-336-0315  
Email: [kstanzel@cbbep.org](mailto:kstanzel@cbbep.org)

- I would like to stay up-to-date on CBBEP's conservation efforts. Please sign me up for CBBEP's e-newsletters.

Email

Coastal Bend Bays & Estuaries Program is a 501(c)(3) organization. CBBEP's Federal Tax ID number is 74-2924909.

I am interested in learning more about ...

- Coastal Bird Program
- Environmental Educational Programs
- Land Conservation Program
- Water Quality Projects
- Habitat Restoration
- Recreation & Public Access Projects

I would like to get involved in the following ways ...

- Volunteer with:
  - Coastal Bird Program
  - Environmental Education Program
  - Trash Cleanups and Other Special Events
- Spread the word
- Donate

The best way to follow up with me is by ...

- Email: \_\_\_\_\_
- Phone: \_\_\_\_\_