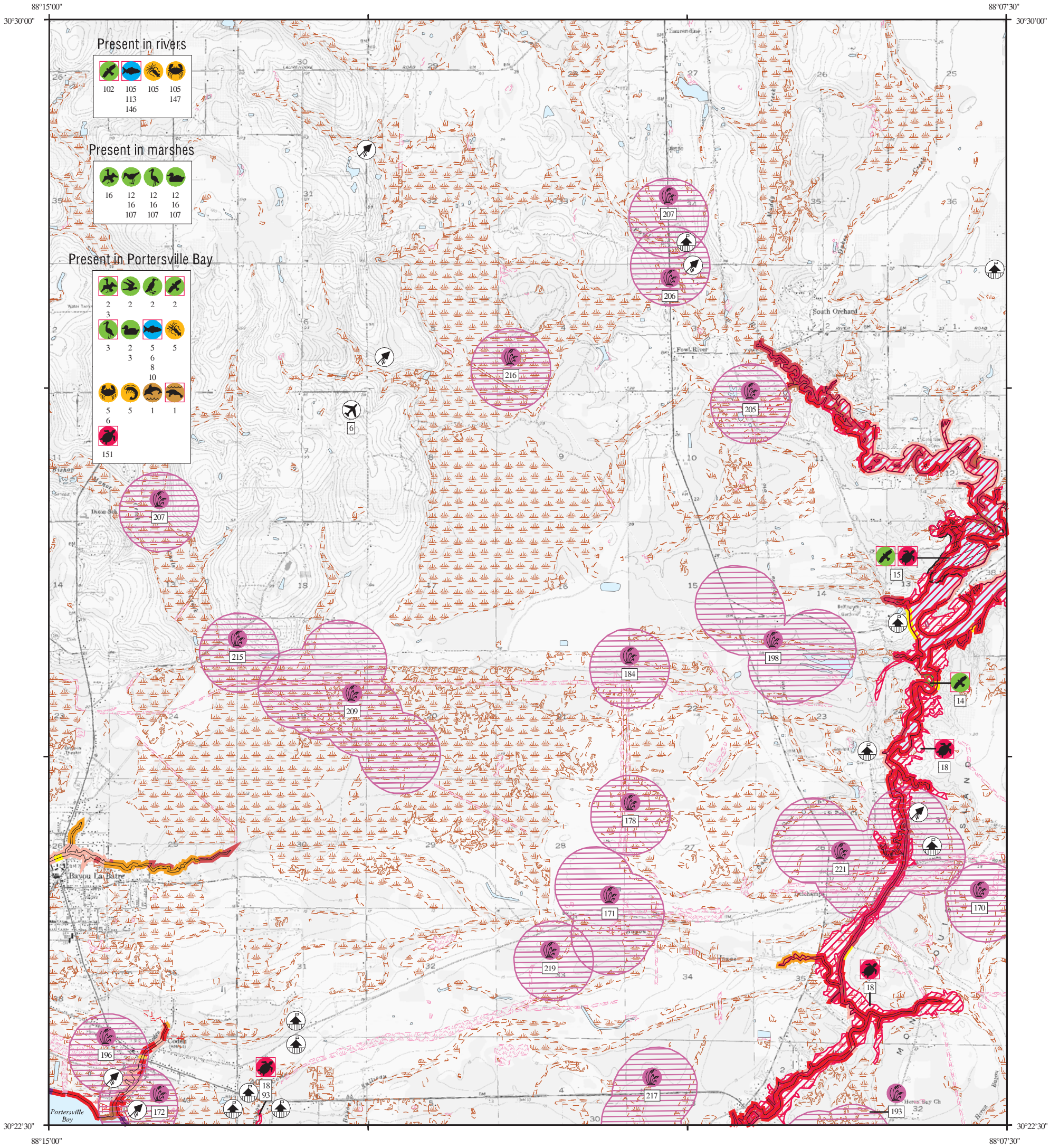


ENVIRONMENTAL SENSITIVITY INDEX MAP



SHORELINE HABITATS (ESI)

- 1B EXPOSED, SOLID MAN-MADE STRUCTURES
- 2A EXPOSED WAVE-CUT PLATFORMS IN MUD OR CLAY
- 2B EXPOSED SCARPS AND STEEP SLOPES IN CLAY
- 3A FINE-TO MEDIUM-GRAINED SAND BEACHES
- 3B SCARPS AND STEEP SLOPES IN SAND
- 4 COARSE-GRAINED SAND BEACHES
- 5 MIXED SAND AND GRAVEL BEACHES
- 6B RIPRAP
- 7 EXPOSED TIDAL FLATS
- 8A SHELTERED SCARPS IN MUD OR CLAY
- 8B SHELTERED, SOLID MAN-MADE STRUCTURES
- 8C SHELTERED RIPRAP
- 9A SHELTERED TIDAL FLATS
- 9B SHELTERED, VEGETATED LOW BANKS
- 10A SALT-AND BRACKISH-WATER MARSHES
- 10B FRESHWATER MARSHES
- 10C SWAMPS
- 10D SCRUB-SHRUB WETLANDS

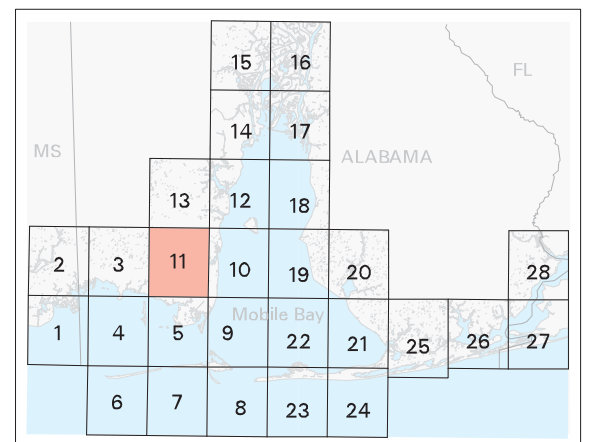


SCALE 1:50000



Not For Navigation
Published: August 2007

Published at Seattle, Washington
National Oceanic and Atmospheric Administration
National Ocean Service
Office of Response and Restoration
Emergency Response Division



Alabama: ESIMAP 11

BIOLOGICAL RESOURCES:

BIRD:

RAR#	Species	S F Conc.	J	F	M	A	M	J	J	A	S	O	N	D	Nesting	Migrating	Molting
2	American white pelican	P	X	X	X	X						X	X	X	-	-	-
	Bonaparte's gull		X	X	X	X	X						X	X	-	-	-
	Brown pelican		X	X	X	X	X	X	X	X	X	X	X	X	-	-	-
	Bufflehead		X	X	X								X	X	-	-	-
	Canvasback		X	X	X								X	X	-	-	-
	Common goldeneye		X	X	X								X	X	-	-	-
	Common loon		X	X	X	X				X	X	X	X		-	-	-
	Forster's tern		X	X	X	X							X	X	-	-	-
	Herring gull		X	X	X	X	X	X	X	X	X	X	X	X	-	-	-
	Horned grebe		X	X	X	X				X	X	X	X		-	-	-
	Laughing gull		X	X	X	X	X	X	X	X	X	X	X	X	-	-	-
	Least tern		X	X	X	X				X	X	X	X		-	-	-
	Lesser scaup		X	X	X								X	X	-	-	-
	Magnificent frigatebird				X	X	X	X	X	X	X	X	X	X	-	-	-
	Northern gannet		X	X	X	X				X	X	X	X		-	-	-
	Osprey	P	X	X	X	X	X	X	X	X	X	X	X	X	-	-	-
	Redhead		X	X	X								X	X	-	-	-
	Ring-billed gull		X	X	X	X	X	X	X	X	X	X	X	X	-	-	-
	Royal tern		X	X	X	X	X	X	X	X	X	X	X	X	-	-	-
3	Double-crested cormorant		X	X	X					X	X	X	X		-	-	-
	Greater scaup		X	X	X								X	X	-	-	-
	Hooded merganser		X	X	X					X	X	X			-	-	-
	Red-breasted merganser		X	X	X					X	X	X			-	-	-
	Reddish egret	P	X	X	X	X	X	X	X	X	X	X	X	X	-	-	-
	Ruddy duck		X	X	X								X	X	-	-	-
12	American bittern		X	X	X								X		-	-	-
	Common moorhen		X	X	X	X	X	X	X	X	X	X	X	X	MAY-JUL	-	-
	Greater yellowlegs		X	X	X	X	X	X	X	X	X	X	X	X	-	-	-
	Least bittern		X	X	X	X	X	X	X	X	X	X	X	X	MAY-JUL	-	-
	Mottled duck		X	X	X	X	X	X	X	X	X	X	X	X	APR-JUL	-	-
14	Bald eagle	P T 1 NEST	X	X	X	X	X	X	X	X	X	X	X	X	DEC-MAY	-	-
	Osprey	P 5 NESTS	X	X	X	X	X	X	X	X	X	X	X	X	MAY-JUL	-	-
15	Osprey	P	X	X	X	X	X	X	X	X	X	X	X	X	MAY-JUL	-	-
16	Pied-billed grebe		X	X	X								X	X	-	-	-
	Ring-necked duck		X	X	X								X	X	-	-	-
	Solitary sandpiper		X	X	X	X				X	X	X			-	-	-
	White ibis		X	X	X	X	X	X	X	X	X	X	X	X	APR-JUN	-	-
102	Bald eagle	P T	X	X	X								X	X	-	-	-
107	Black-crowned night-heron		X	X	X	X	X	X	X	X	X	X	X	X	APR-JUN	-	-
	Blue-winged teal		X	X	X								X		-	-	-
	Cattle egret		X	X	X	X	X	X	X	X	X	X	X	X	MAY-JUN	-	-
	Clapper rail		X	X	X	X	X	X	X	X	X	X	X	X	MAY-AUG	-	-
	Great blue heron		X	X	X	X	X	X	X	X	X	X	X	X	FEB-JUL	-	-
	Great egret		X	X	X	X	X	X	X	X	X	X	X	X	MAR-JUN	-	-
	Green-winged teal		X	X	X								X	X	-	-	-
	Killdeer		X	X	X	X	X	X	X	X	X	X	X	X	APR-AUG	-	-
	Little blue heron		X	X	X	X	X	X	X	X	X	X	X	X	MAR-JUL	-	-
	Purple gallinule		X	X	X	X	X						X	X	MAY-JUL	-	-
	Snowy egret		X	X	X	X	X	X	X	X	X	X	X	X	APR-JUN	-	-
	Tricolored heron		X	X	X	X	X	X	X	X	X	X	X	X	MAY-JUN	-	-
	Willet		X	X	X	X	X	X	X	X	X	X	X	X	MAY-AUG	-	-
	Yellow-crowned night-heron		X	X	X	X	X	X	X	X	X	X	X	X	APR-JUL	-	-

FISH:

RAR#	Species	S F Conc.	J	F	M	A	M	J	J	A	S	O	N	D	Spawning	Eggs	Larvae	Juveniles	Adults
5	Atlantic croaker		4	4	4	4	4	4	3	3	3	3	3	3	SEP-APR	SEP-APR	OCT-APR	JAN-DEC	JAN-DEC
	Atlantic stingray		2	2	2	2	2	2	2	2	2	2	2	2	-	-	-	-	-
	Bay anchovy		3	3	3	4	4	4	4	4	4	4	4	4	JAN-DEC	JAN-DEC	JAN-DEC	JAN-DEC	JAN-DEC
	Bay whiff		2	2	2	2	2	2	2	2	2	2	2	2	-	-	-	-	-
	Crevalle jack		2	2	2	2	2	2	2	2	2	2	2	2	JAN-DEC	MAY-SEP	MAY-SEP	JAN-DEC	JAN-SEP
	Darter goby		2	2	2	2	2	2	2	2	2	2	2	2	-	-	-	-	-
	Fringed flounder		2	2	2	2	2	2	2	2	2	2	2	2	-	-	-	-	-
	Gafftopsail catfish						1	2	2	2	1				-	-	-	-	-
	Gray snapper						1	1	1	1	1	1	1	1	-	-	-	-	-
	Gulf killifish		2	2	2	2	3	3	3	3	3	3	3	2	JAN-DEC	JAN-DEC	JAN-DEC	JAN-DEC	JAN-DEC
	Gulf menhaden		4	4	4	4	4	4	4	4	4	4	4	4	OCT-MAR	OCT-MAR	OCT-MAY	JAN-DEC	JAN-DEC
	Gulf toadfish		2	2	2	2	2	2	2	2	2	2	2	2	-	-	-	-	-
	Hardhead catfish		2	2	2	4	4	4	4	4	4	4	4	2	APR-AUG	APR-AUG	APR-SEP	JAN-DEC	JAN-DEC
	Least puffer		2	2	2	2	2	2	2	2	2	2	2	2	-	-	-	-	-
	Pigfish				1	1	1	1	1	1	2	1			-	-	-	-	-
	Pinfish		3	3	3	3	4	4	4	4	4	3	3		NOV-MAR	NOV-MAR	NOV-APR	JAN-DEC	JAN-DEC
	Red drum		2	2	2	2	2	2	2	2	2	2	2	2	SEP-NOV	SEP-FEB	SEP-FEB	JAN-DEC	JAN-DEC
	Sand seatrout		4	4	4	4	4	4	4	4	4	4	4	4	MAR-OCT	MAY-OCT	FEB-OCT	JAN-DEC	JAN-DEC
	Silver perch		3	3	3	3	3	3	3	3	3	3	3	3	MAY-SEP	MAY-SEP	MAY-SEP	JAN-DEC	JAN-DEC
	Southern flounder		3	3	3	3	3	3	3	2	3	3	3	3	SEP-JAN	SEP-JAN	SEP-APR	JAN-DEC	JAN-DEC
	Southern kingfish		2	2	3	3	3	3	3	3	3	3	3	3	-	-	-	-	-
	Spot		4	4	4	4	4	4	4	4	4	4	4	4	NOV-MAR	NOV-APR	NOV-MAR	JAN-DEC	JAN-DEC
	Spotfin mojarra						1	2	2	1	1	1			-	-	-	-	-
	Spotted seatrout		3	3	3	3	3	3	3	3	3	3	3	3	MAR-SEP	MAR-SEP	MAR-OCT	JAN-DEC	JAN-DEC
	Star drum		1	1	2	2	2	2	2	2	2	1	1		-	-	-	-	-
	Striped anchovy					1	1	1	1	1	1	1	1	1	-	-	-	-	-
	Striped mullet		4	4	4	4	4	4	4	4	4	4	4	4	NOV-MAY	NOV-MAY	NOV-MAY	JAN-DEC	JAN-DEC
	Threadfin shad		2	2	2	2	1	1	1	1	1	1	2		-	-	-	-	-
	White mullet		1	1	1	1	1	1	1	1	1	1	1	1	-	-	-	-	-
6	Inland silverside		3	3	3	3	4	4	4	4	4	4	3		JAN-DEC	JAN-DEC	JAN-DEC	JAN-DEC	JAN-DEC
	Longnose killifish		1	1	1	1	2	1	1	1	1	1	1	1	JUN-JUL	-	-	-	-
	Marsh killifish		1	1	1	1	1	1	1	1	1	1	1	1	-	-	-	-	-
	Northern kingfish				1	2	2	2	1	1	1	1	1	1	-	-	-	-	-
	Rough silverside		3	3	3	3	4	4	4	4	4	4	3		JAN-DEC	JAN-DEC	JAN-DEC	JAN-DEC	JAN-DEC
	Sheepshead minnow		3	3	3	3	3	3	3	3	3	3	3	3	JAN-DEC	JAN-DEC	JAN-DEC	JAN-DEC	JAN-DEC
8	Atlantic spadefish						2	2	3	3	3	2	1		-	-	JUN-SEP	-	-
	Atlantic sturgeon		1	1	1	1							1	1	-	-	-	-	-
	Black drum		2	2	2	2	2	2	2	2	2	2	2	2	FEB-APR	FEB-APR	FEB-APR	JAN-DEC	JAN-DEC
	Bluefish						2	2	2	2	2	2	2		APR-OCT	-	-	-	-
	Florida pompano				1	2	3	3	3	2	2	1	1		MAY-JUL	MAY-JUL	MAY-JUL	MAY-NOV	MAR-SEP
	Gulf butterflyfish		2	2	2	3	3	2	2	2	2	2	2	2	-	-	-	-	-
	Gulf flounder		2	2	2	2	2	2	2	2	2	2	2	2	NOV-FEB	NOV-FEB	NOV-FEB	JAN-DEC	JAN-DEC
	Harvestfish		1	1	1	2	2	2	2	2	2	2	1	1	-	-	-	-	-
	Ladyfish				1	1	2	2	1	1	1	1			-	-	-	-	-
	Scaled sardine					1	1	1	2	2	2	2			-	-	-	-	-
	Sheepshead		2	2	2	2	2	2	2	2	2	2	2	2	FEB-MAR	FEB-APR	FEB-MAY	JAN-DEC	JAN-DEC
	Silver seatrout		1	1	1	1	1	1	2	2	1	1	1	1	-	-	-	-	-
	Southern hake		1	1	1	1							1</						

Alabama: ESIMAP 11 (cont.)

BIOLOGICAL RESOURCES: (cont.)

FISH: (cont.)

RAR#	Species	S F Conc.	J	F	M	A	M	J	J	A	S	O	N	D	Spawning	Eggs	Larvae	Juveniles	Adults
105	Atlantic croaker		4	4	4	4	4	4	4	4	4	4	3	3	-	-	AUG-APR	JAN-DEC	MAY-DEC
	Bay anchovy		4	4	4	4	4	4	4	4	4	4	4	4	FEB-SEP	FEB-NOV	FEB-DEC	JAN-DEC	JAN-DEC
	Bay whiff		2	2	2	3	3	3	3	3	3	3	2		-	-	DEC-APR	JAN-DEC	-
	Blue catfish		1	2	2	2	1	1					1	1	-	-	-	-	NOV-JUL
	Crevalle jack		2	2	2	2	2	2	2	2	2	2	2	2	JAN-DEC	MAY-SEP	MAY-SEP	JAN-DEC	MAY-SEP
	Darter goby		2	2	2	2	2	2	2	2	2	2	2	2	-	-	-	-	JAN-DEC
	Gafftopsail catfish					1	1	2	2	1	2	1	1		-	-	-	-	MAY-DEC
	Gray snapper					2	2	2	2	2	2	2	2		-	-	-	MAY-DEC	MAY-DEC
	Gulf killifish		3	3	3	3	3	3	3	3	3	3	3	3	MAR-SEP	MAR-SEP	MAR-OCT	JAN-DEC	JAN-DEC
	Gulf menhaden		2	4	4	4	3	3	3	3	4	3	4		-	SEP-FEB	OCT-MAY	FEB-DEC	FEB-OCT
	Gulf sturgeon	P T	X	X	X	X	X	X	X	X	X	X	X	X	-	-	-	-	JAN-DEC
	Hardhead catfish		2	2	2	3	3	3	3	3	3	3	2		APR-AUG	APR-AUG	APR-SEP	JAN-DEC	JAN-DEC
	Red drum		2	2	2	2	2	2	2	2	2	2	2		-	SEP-DEC	SEP-DEC	JAN-DEC	JUN-OCT
	Sand seatrout		2	2	4	4	4	4	3	3	3	2	2		FEB-SEP	FEB-SEP	FEB-SEP	JAN-DEC	JAN-DEC
	Silver perch		2	2	2	2	2	2	2	2	2	2	2		APR-AUG	APR-AUG	APR-AUG	JAN-DEC	JAN-DEC
	Southern flounder		2	2	2	2	2	2	2	2	2	2	2		-	-	NOV-MAR	JAN-DEC	JAN-DEC
	Southern hake		1	1	2	2	2					1	1		-	-	-	-	OCT-OCT DEC-MAY
	Spot		4	4	4	4	4	4	4	3	3	3	3	3	-	-	NOV-APR	JAN-DEC	JAN-DEC
	Spotted seatrout		3	3	3	3	3	3	3	3	3	3	3	3	APR-AUG	APR-AUG	APR-OCT	JAN-DEC	JAN-DEC
	Striped anchovy		2	2	2	2	2	2	2	2	2	2	2		-	-	-	-	JAN-DEC
	Striped mullet		3	3	3	3	3	3	3	3	3	3	3	3	-	-	DEC-APR	JAN-DEC	MAY-DEC
	Threadfin shad		2	2	2	2	2	2	2	2	2	2	2		-	-	-	-	JAN-DEC
	White mullet		1				1	2	2	2	2	2	1		-	-	-	-	MAY-JAN
113	Least puffer		2	2	2	2	2	2	2	2	2	2	2		-	-	-	-	JAN-DEC
	Pinfish		3	3	3	3	3	3	3	3	3	3	3	3	-	-	DEC-APR	JAN-DEC	MAR-OCT
	Skipjack herring		1	1	1	1	1	1					1		-	-	-	-	AUG-AUG DEC-JUN
	Southern kingfish		2	2	2	2	3	3	3	2	2	2	2	2	-	-	-	-	JAN-DEC
	Star drum		2	2	2	2	2	2	2	2	2	2	2	2	-	-	-	-	JAN-DEC
146	Inland silverside		3	3	3	3	3	3	3	3	3	3	3	3	MAR-AUG	MAR-AUG	MAR-SEP	JAN-DEC	JAN-DEC
	Longnose killifish		1	1	1	1	1	1	1	1	1	1	1	1	-	-	-	-	-
	Rough silverside		1	1		2	2	2	2	2	1	1	1	1	-	-	-	-	APR-FEB

HABITAT:

RAR#	Species	S F Conc.	J	F	M	A	M	J	J	A	S	O	N	D
170	Night-flowering wild-petunia		X	X	X	X	X	X	X	X	X	X	X	X
171	Flax-leaf false-foxglove		X	X	X	X	X	X	X	X	X	X	X	X
	Giant spiral ladies'-tresses		X	X	X	X	X	X	X	X	X	X	X	X
	Night-flowering wild-petunia		X	X	X	X	X	X	X	X	X	X	X	X
	Snowy orchis		X	X	X	X	X	X	X	X	X	X	X	X
172	Tiny-leaved buckthorn		X	X	X	X	X	X	X	X	X	X	X	X
178	Giant spiral ladies'-tresses		X	X	X	X	X	X	X	X	X	X	X	X
184	Bluetheads		X	X	X	X	X	X	X	X	X	X	X	X
193	Chapman aster		X	X	X	X	X	X	X	X	X	X	X	X
	Christmas berry		X	X	X	X	X	X	X	X	X	X	X	X
	Thin-stemmed false-foxglove		X	X	X	X	X	X	X	X	X	X	X	X
	Yellow fringeless orchid		X	X	X	X	X	X	X	X	X	X	X	X
196	Brilliant hibiscus		X	X	X	X	X	X	X	X	X	X	X	X
198	Crenate milkwort		X	X	X	X	X	X	X	X	X	X	X	X
	Flax		X	X	X	X	X	X	X	X	X	X	X	X
	Harper's yellow-eyed grass		X	X	X	X	X	X	X	X	X	X	X	X
	Pineland bogbutton		X	X	X	X	X	X	X	X	X	X	X	X
	Serviceberry holly		X	X	X	X	X	X	X	X	X	X	X	X
	Thin-stemmed false-foxglove		X	X	X	X	X	X	X	X	X	X	X	X
205	Flame flower		X	X	X	X	X	X	X	X	X	X	X	X
206	Naked-stemmed panic grass		X	X	X	X	X	X	X	X	X	X	X	X
207	Spoon-flower		X	X	X	X	X	X	X	X	X	X	X	X
209	Bluetheads		X	X	X	X	X	X	X	X	X	X	X	X
	Flame flower		X	X	X	X	X	X	X	X	X	X	X	X
	Large white fringed orchid		X	X	X	X	X	X	X	X	X	X	X	X
	Spoon-flower		X	X	X	X	X	X	X	X	X	X	X	X
	Walter's sedge		X	X	X	X	X	X	X	X	X	X	X	X
215	Large white fringed orchid		X	X	X	X	X	X	X	X	X	X	X	X
216	Large white fringed orchid		X	X	X	X	X	X	X	X	X	X	X	X
	Spoon-flower		X	X	X	X	X	X	X	X	X	X	X	X
217	Flax-leaf false-foxglove		X	X	X	X	X	X	X	X	X	X	X	X
	Lattice jointgrass		X	X	X	X	X	X	X	X	X	X	X	X
	Yellow fringeless orchid		X	X	X	X	X	X	X	X	X	X	X	X
219	Yellow fringeless orchid		X	X	X	X	X	X	X	X	X	X	X	X
221	Atlantic St. John's-wort		X	X	X	X	X	X	X	X	X	X	X	X
	Beaked spikerush		X	X	X	X	X	X	X	X	X	X	X	X
	Beardgrass		X	X	X	X	X	X	X	X	X	X	X	X
	Eastern bishop-weed		X	X	X	X	X	X	X	X	X	X	X	X
	Leafless false-foxglove		X	X	X	X	X	X	X	X	X	X	X	X
	Night-flowering wild-petunia		X	X	X	X	X	X	X	X	X	X	X	X
	Shiny spikegrass		X	X	X	X	X	X	X	X	X	X	X	X
	Snowy orchis		X	X	X	X	X	X	X	X	X	X	X	X
	Southern white beak rush		X	X	X	X	X	X	X	X	X	X	X	X
	Tracy's beak rush		X	X	X	X	X	X	X	X	X	X	X	X
	Twig rush		X	X	X	X	X	X	X	X	X	X	X	X

INVERTEBRATE:

RAR#	Species	S F Conc.	J	F	M	A	M	J	J	A	S	O	N	D	Spawning	Eggs	Larvae	Juveniles	Adults
5	Atlantic brief squid		2	2	2	2	2	2	2	2	2	2	2	2	-	-	-	-	JAN-DEC
	Blue crab		4	4	3	4	4	4	4	4	4	4	4	4	MAR-NOV	MAR-NOV	MAR-DEC	JAN-DEC	JAN-DEC
	Brown shrimp		4	4	4	4	4	4	4	4	4	4	4	4	NOV-APR	NOV-APR	FEB-NOV	JAN-DEC	JAN-DEC
	Grass shrimp		3	3	3	3	3	3	3	3	3	3	2		-	-	-	JAN-DEC	JAN-DEC
	Pink shrimp		1	1	2	2	2	2	2	2	2	2	2	2	MAR-NOV	MAR-NOV	MAR-NOV	JAN-DEC	JAN-DEC
	White shrimp		4	4	3	3	3	4	4	4	4	4	4	4	MAR-OCT	MAR-NOV	JAN-DEC	JAN-DEC	JAN-DEC
6	Thinstripe hermit		2	2	2	2	2	2	2	2	2	2	2	2	-	-	-	-	JAN-DEC
105	Atlantic brief squid		2	2	2	2	2	2	2	2	2	2	2	2	-	-	-	-	JAN-DEC
	Blue crab		4	4	4	4	4	4	4	4	4	4	4	4	MAR-NOV	MAR-NOV	JAN-DEC	JAN-DEC	JAN-DEC
147	Thinstripe hermit		2	2	2	2	2	2	2	2	2	2	2	2	-	-	-	-	JAN-DEC

MARINE MAMMAL:

RAR#	Species	S F Conc.	J	F	M	A	M	J	J	A	S	O	N	D	Mating	Calving	Pupping	Molting
1	Bottlenose dolphin		X	X	X	X	X	X	X	X	X	X	X	X	MAR-SEP	MAR-SEP	-	-
	West Indian manatee	E VERY LOW	X	X	X	X	X	X	X	X	X	X	X	X	-	-	-	-

REPTILE:

RAR#	Species	S F Conc.	J	F	M	A	M	J	J	A	S	O	N	D	Nesting	Hatching	Interesting	Juveniles	Adults
15	Alligator snapping turtle	P	X	X	X	X	X	X	X	X	X	X	X	X	APR-MAY	-	-	JAN-DEC	JAN-DEC
18	Alabama red-bellied turtle	P E	X	X	X	X	X	X	X	X	X	X	X	X	APR-AUG	-	-	JAN-DEC	JAN-DEC
93	Mississippi diamondback terrapin	P	X	X	X	X	X	X	X	X	X	X	X	X	APR-AUG	-	-	JAN-DEC	JAN-DEC

Biological information shown on the maps represents known concentration areas or occurrences, but does not necessarily represent the full distribution or range of each species. This is particularly important to recognize when considering potential impacts to protected species.

Alabama: ESIMAP 11 (cont.)

BIOLOGICAL RESOURCES: (cont.)

REPTILE: (cont.)

RAR#	Species	S F Conc.	J	F	M	A	M	J	J	A	S	O	N	D	Nesting	Hatching	Interesting	Juveniles	Adults
151	Green sea turtle	P T	X	X	X	X	X	X	X	X	X	X	X	X	-	-	-	MAR-NOV	APR-SEP
	Kemp's ridley sea turtle	P E	X	X	X	X	X	X	X	X	X	X	X	X	-	-	-	MAR-NOV	APR-SEP
	Leatherback sea turtle	P E	X	X	X	X	X	X	X	X	X	X	X	X	-	-	-	MAR-NOV	-
	Loggerhead sea turtle	P T	X	X	X	X	X	X	X	X	X	X	X	X	-	-	-	MAR-NOV	APR-SEP

HUMAN USE RESOURCES:

AIRPORT:

HUN#	Name	Contact	Phone
6	ROY E RAY AIRPORT		

Biological information shown on the maps represents known concentration areas or occurrences, but does not necessarily represent the full distribution or range of each species. This is particularly important to recognize when considering potential impacts to protected species.
