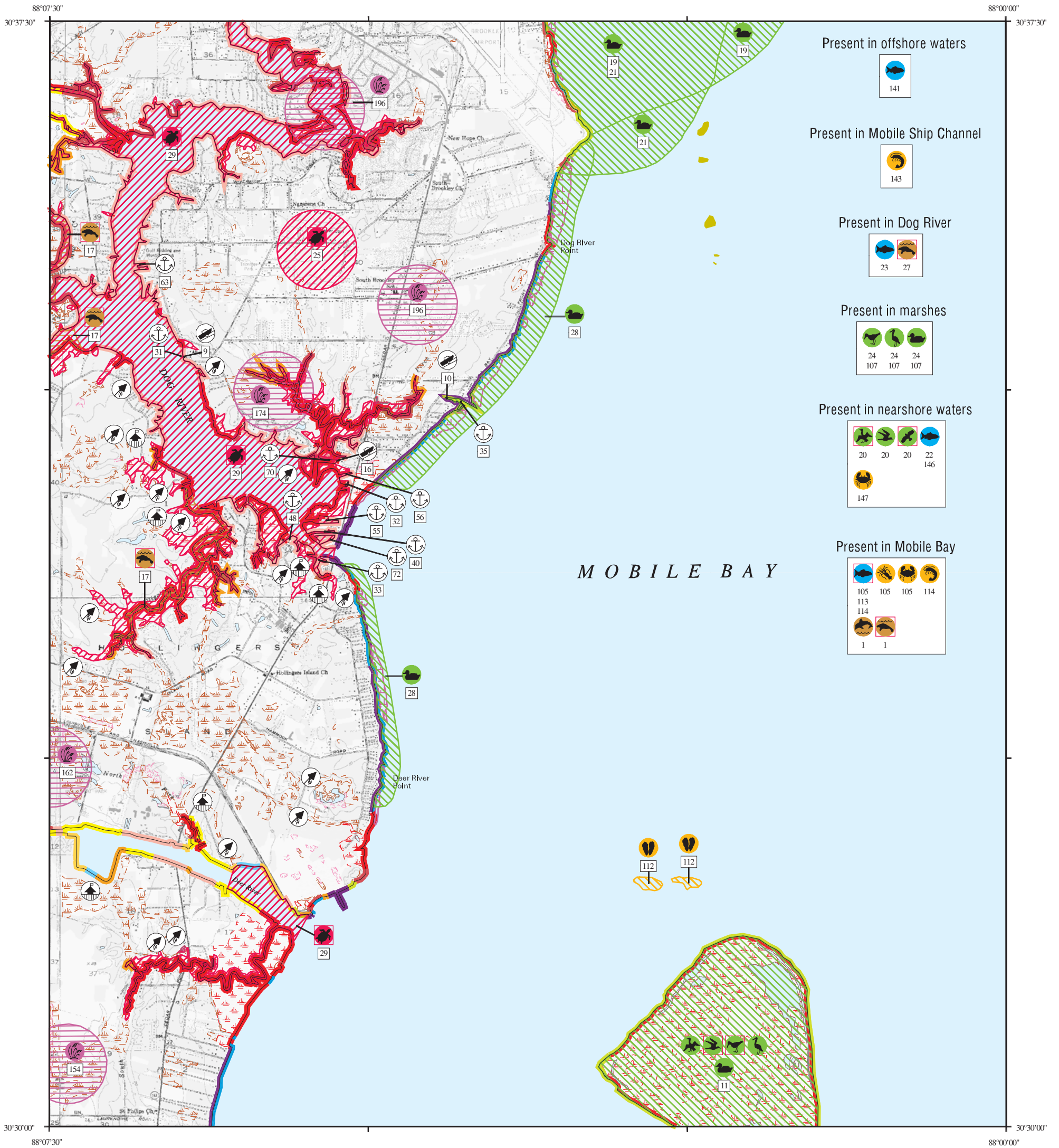


# ENVIRONMENTAL SENSITIVITY INDEX MAP



## SHORELINE HABITATS (ESI)

- 1B EXPOSED, SOLID MAN-MADE STRUCTURES
- 2A EXPOSED WAVE-CUT PLATFORMS IN MUD OR CLAY  
2B EXPOSED SCARPS AND STEEP SLOPES IN CLAY
- 3A FINE-TO MEDIUM-GRAINED SAND BEACHES  
3B SCARPS AND STEEP SLOPES IN SAND
- 4 COARSE-GRAINED SAND BEACHES
- 5 MIXED SAND AND GRAVEL BEACHES
- 6B RIPRAP
- 7 EXPOSED TIDAL FLATS
- 8A SHELTERED SCARPS IN MUD OR CLAY  
8B SHELTERED, SOLID MAN-MADE STRUCTURES  
8C SHELTERED RIPRAP
- 9A SHELTERED TIDAL FLATS  
9B SHELTERED, VEGETATED LOW BANKS
- 10A SALT-AND BRACKISH-WATER MARSHES
- 10B FRESHWATER MARSHES
- 10C SWAMPS
- 10D SCRUB-SHRUB WETLANDS

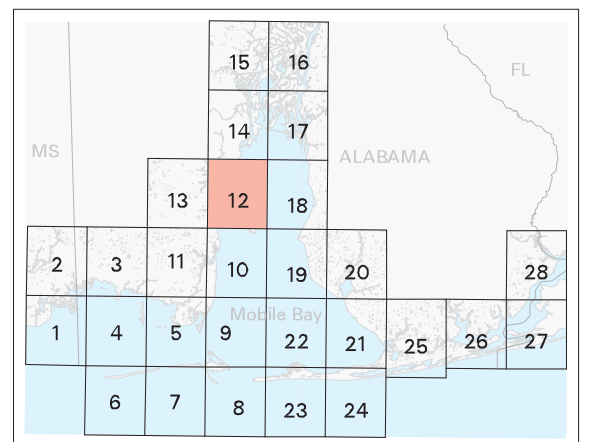


SCALE 1:50000



Not For Navigation  
Published: August 2007

Published at Seattle, Washington  
National Oceanic and Atmospheric Administration  
National Ocean Service  
Office of Response and Restoration  
Emergency Response Division



**Alabama: ESIMAP 12**

**BIOLOGICAL RESOURCES:**

**BIRD:**

RAR#	Species	S F Conc.	J	F	M	A	M	J	J	A	S	O	N	D	Nesting	Migrating	Molting	
11	American oystercatcher	P	X	X	X								X	X	-	-	-	
	Black skimmer		X	X	X	X	X	X	X	X	X	X	X	X	MAY-JUL	-	-	
	Black tern		X	X	X	X						X	X	X	-	-	-	
	Black-crowned night-heron	25 PAIRS		X	X	X	X	X	X	X	X	X	X	X	APR-JUN	-	-	
	Black-necked stilt		X	X	X	X	X	X	X	X	X	X	X	X	MAY-JUL	-	-	
	Brown pelican	4000-5000 PAIRS	X	X	X	X	X	X	X	X	X	X	X	X	MAY-JUL	-	-	
	Caspian tern	200-600 PAIRS	X	X	X	X	X	X	X	X	X	X	X	X	JUN-JUL	-	-	
	Cattle egret	200 PAIRS		X	X	X	X	X	X	X	X	X	X	X	MAY-JUN	-	-	
	Common tern			X	X	X	X	X	X	X	X	X	X	X	MAY-JUN	-	-	
	Gull-billed tern	P 25 PAIRS		X	X	X	X	X	X	X	X	X	X	X	MAY-JUL	-	-	
	Laughing gull	4000-5000 PAIRS	X	X	X	X	X	X	X	X	X	X	X	X	JUN-JUL	-	-	
	Little blue heron		X	X	X	X	X	X	X	X	X	X	X	X	APR-JUN	-	-	
	Mottled duck		X	X	X	X	X	X	X	X	X	X	X	X	APR-JUL	-	-	
	Royal tern	2000-3000 PAIRS	X	X	X	X	X	X	X	X	X	X	X	X	JUN-JUL	-	-	
	Sandwich tern	200-300 PAIRS		X	X	X	X	X	X	X	X	X	X	X	JUN-JUL	-	-	
	Snowy egret	25 PAIRS	X	X	X	X	X	X	X	X	X	X	X	X	APR-JUN	-	-	
	Tricolored heron	10 PAIRS	X	X	X	X	X	X	X	X	X	X	X	X	MAY-JUN	-	-	
19	American black duck	RARE	X	X	X	X							X	X	X	-	-	-
	American coot		X	X	X	X							X	X	X	-	-	-
	American wigeon		X	X									X	X	X	-	-	-
	Blue-winged teal			X	X					X					X	-	-	-
	Bufflehead		X	X	X								X	X	X	-	-	-
	Canvasback		X	X	X								X	X	X	-	-	-
	Gadwall		X	X	X	X							X	X	X	-	-	-
	Greater scaup		X	X	X								X	X	X	-	-	-
	Green-winged teal		X	X	X								X	X	X	-	-	-
	Hooded merganser		X	X	X	X							X	X	X	-	-	-
	Lesser scaup		X	X	X								X	X	X	-	-	-
	Mallard		X	X	X	X	X	X	X	X	X	X	X	X	X	-	-	-
	Mottled duck		X	X	X	X	X	X	X	X	X	X	X	X	X	-	-	-
	Northern pintail		X	X	X								X	X	X	-	-	-
	Northern shoveler		X	X	X	X							X	X	X	-	-	-
	Red-breasted merganser		X	X	X								X	X	X	-	-	-
	Redhead		X	X	X								X	X	X	-	-	-
	Ring-necked duck		X	X	X								X	X	X	-	-	-
	Ruddy duck		X	X	X								X	X	X	-	-	-
	Waterfowl	VERY HIGH	X	X	X								X	X	X	-	-	-
20	American white pelican	P	X	X	X								X	X	X	-	-	-
	Anhinga		X	X	X	X	X	X	X	X	X	X	X	X	X	-	-	-
	Brown pelican		X	X	X	X	X	X	X	X	X	X	X	X	X	-	-	-
	Double-crested cormorant		X	X	X								X	X	X	-	-	-
	Forster's tern		X	X	X	X							X	X	X	-	-	-
	Herring gull		X	X	X	X	X	X	X	X	X	X	X	X	X	-	-	-
	Laughing gull		X	X	X	X	X	X	X	X	X	X	X	X	X	-	-	-
	Osprey		X	X	X	X	X	X	X	X	X	X	X	X	X	MAY-JUL	-	-
	Ring-billed gull	P	X	X	X	X							X	X	X	-	-	-
	Royal tern		X	X	X	X	X	X	X	X	X	X	X	X	X	-	-	-
21	Common goldeneye		X	X	X								X	X	X	-	-	-
24	American bittern		X	X	X								X	X	X	-	-	-
	American coot		X	X	X								X	X	X	-	-	-
	Common moorhen		X	X	X	X	X	X	X	X	X	X	X	X	X	MAY-JUL	-	-
	Greater yellowlegs			X	X	X	X	X	X	X	X	X	X	X	-	-	-	
	Green-backed heron		X	X	X	X	X	X	X	X	X	X	X	X	MAY-JUL	-	-	
	King rail		X	X	X	X	X	X	X	X	X	X	X	X	APR-AUG	-	-	
	Mallard		X	X	X	X	X	X	X	X	X	X	X	X	APR-JUL	-	-	
	Mottled duck		X	X	X	X	X	X	X	X	X	X	X	X	APR-JUL	-	-	
	White ibis		X	X	X	X	X	X	X	X	X	X	X	X	APR-JUN	-	-	
	Wood duck		X	X	X	X	X	X	X	X	X	X	X	X	FEB-JUL	-	-	
28	Bufflehead	HIGH	X	X	X								X	X	X	-	-	-
	Canvasback		X	X	X								X	X	X	-	-	-
	Gadwall		X	X	X								X	X	X	-	-	-
	Greater scaup	HIGH	X	X	X								X	X	X	-	-	-
	Lesser scaup	HIGH	X	X	X								X	X	X	-	-	-
	Redhead		X	X	X								X	X	X	-	-	-
	Ruddy duck	HIGH	X	X	X								X	X	X	-	-	-
107	Black-crowned night-heron			X	X	X	X	X	X	X	X	X	X	X	APR-JUN	-	-	
	Blue-winged teal			X	X								X	X	-	-	-	
	Cattle egret			X	X	X	X	X	X	X	X	X	X	X	MAY-JUN	-	-	
	Clapper rail		X	X	X	X	X	X	X	X	X	X	X	X	MAY-AUG	-	-	
	Great blue heron		X	X	X	X	X	X	X	X	X	X	X	X	FEB-JUL	-	-	
	Great egret		X	X	X	X	X	X	X	X	X	X	X	X	MAR-JUN	-	-	
	Green-winged teal		X	X	X								X	X	X	-	-	-
	Killdeer		X	X	X	X	X	X	X	X	X	X	X	X	APR-AUG	-	-	
	Little blue heron		X	X	X	X	X	X	X	X	X	X	X	X	MAR-JUL	-	-	
	Purple gallinule			X	X	X	X						X	X	X	MAY-JUL	-	-
	Snowy egret		X	X	X	X	X	X	X	X	X	X	X	X	APR-JUN	-	-	
	Tricolored heron		X	X	X	X	X	X	X	X	X	X	X	X	MAY-JUN	-	-	
	Willet		X	X	X	X	X	X	X	X	X	X	X	X	MAY-AUG	-	-	
	Yellow-crowned night-heron		X	X	X	X	X	X	X	X	X	X	X	X	APR-JUL	-	-	

**FISH:**

RAR#	Species	S F Conc.	J	F	M	A	M	J	J	A	S	O	N	D	Spawning	Eggs	Larvae	Juveniles	Adults
22	American eel				1	1	1	1	1	1	1	1	1	1	-	-	-	-	MAR-OCT
	Black crappie				1	1	1	1	1	1	1	1	1	1	-	-	-	-	APR-SEP
	Bluegill		1	1	1	1	1	1	1	1	1	1	1	1	-	-	-	-	DEC-MAY
	Fringed flounder		2	2	2	2	2	2	2	2	2	2	2	2	-	-	-	-	JAN-DEC
	Gizzard shad		2	2	2	2	2	2	2	2	2	2	2	2	MAR-AUG	MAR-AUG	MAR-SEP	JAN-DEC	JAN-DEC
	Largemouth bass		1	2	2	2	2	2	2	2	2	2	2	2	-	-	-	-	-
	Rainwater killifish		2	2	2	2	2	2	2	2	2	2	2	2	-	-	-	-	JAN-DEC
	Redear sunfish		1	1	1	1	1	2	2	2	1	1	1	1	-	-	-	-	-
	Spotted sunfish		1	1	1	1	1	1	1	1	1	1	1	1	-	-	-	-	-
23	Bluefish						1						1		-	-	-	JUN-JUN	JUN-JUN
															-	-	-	-	NOV-NOV
105	Atlantic croaker		4	4	4	4	4	4	4	4	4	4	3	3	-	-	AUG-APR	JAN-DEC	MAY-DEC
	Bay anchovy		4	4	4	4	4	4	4	4	4	4	4	4	FEB-SEP	FEB-NOV	FEB-DEC	JAN-DEC	JAN-DEC
	Bay whiff		2	2	3	3	3	3	3	3	3	3	2	2	-	-	DEC-APR	JAN-DEC	-
	Blue catfish		1	2	2	2	2	1	1	1	1	1	1	1	-	-	-	-	NOV-JUL
	Crevalle jack		2	2	2	2	2	2	2	2	2	2	2	2	JAN-DEC	MAY-SEP	MAY-SEP	JAN-DEC	MAY-SEP
	Darter goby		2	2	2	2	2	2	2	2	2	2	2	2	-	-	-	-	JAN-DEC
	Gafftopsail catfish				1	2	2	1	2	1	2	1	1	1	-	-	-	-	MAY-DEC
	Gray snapper				2	2	2	2	2	2	2	2	2	2	-	-	-	-	MAY-DEC
	Gulf killifish		3	3	3	3	3	3	3	3	3	3	3	3	MAR-SEP	MAR-SEP	MAR-OCT	JAN-DEC	JAN-DEC
	Gulf menhaden		2	4	4	4	3	3	3	3	4	3	4	4	-	SEP-FEB	OCT-MAY	FEB-DEC	FEB-OCT
	Gulf sturgeon	P T	X	X	X	X	X	X	X	X	X	X	X	X	-	-	-	-	JAN-DEC
	Hardhead catfish		2	2	2	3	3	3	3	3	3	3	2	2	APR-AUG	APR-AUG	APR-SEP	JAN-DEC	JAN-DEC
	Red drum		2	2	2	2	2	2	2	2	2	2	2	2	-	SEP-DEC	SEP-DEC	JAN-DEC	JUN-OCT
	Sand seatrout		2	2	4	4	4	4	4	3	3	3	2	2	FEB-SEP	FEB-SEP	FEB-SEP</		

**Alabama: ESIMAP 12 (cont.)**

**BIOLOGICAL RESOURCES: (cont.)**

**FISH: (cont.)**

RAR#	Species	S F Conc.	J	F	M	A	M	J	J	A	S	O	N	D	Spawning	Eggs	Larvae	Juveniles	Adults
105	Southern flounder		2	2	2	2	2	2	2	2	2	2	2	2	-	-	NOV-MAR	JAN-DEC	JAN-DEC
	Southern hake		1	1	2	2	2					1	1	-	-	-	-	OCT-OCT DEC-MAY	
	Spot		4	4	4	4	4	4	4	3	3	3	3	3	-	-	NOV-APR	JAN-DEC	JAN-DEC
	Spotted seatrout		3	3	3	3	3	3	3	3	3	3	3	3	APR-AUG	APR-AUG	APR-OCT	JAN-DEC	JAN-DEC
	Striped anchovy		2	2	2	2	2	2	2	2	2	2	2	2	-	-	-	-	JAN-DEC
	Striped mullet		3	3	3	3	3	3	3	3	3	3	3	3	-	-	DEC-APR	JAN-DEC	JAN-DEC
	Threadfin shad		2	2	2	2	2	2	2	2	2	2	2	2	-	-	-	-	JAN-DEC
	White mullet		1			1	2	2	2	2	2	2	1	-	-	-	-	MAY-JAN	
113	Least puffer		2	2	2	2	2	2	2	2	2	2	2	2	-	-	-	-	JAN-DEC
	Pinfish		3	3	3	3	3	3	3	3	3	3	3	3	-	-	DEC-APR	JAN-DEC	MAR-OCT
	Skipjack herring		1	1	1	1	1	1	1	1			1	-	-	-	-	AUG-AUG DEC-JUN	
	Southern kingfish		2	2	2	2	3	3	3	2	2	2	2	2	-	-	-	-	JAN-DEC
	Star drum		2	2	2	2	2	2	2	2	2	2	2	2	-	-	-	-	JAN-DEC
114	Pigfish			1	1	1	1	1	1	1	2	1		-	-	-	-	MAR-NOV	
	Spotted hake		2	2	2	1						1		-	-	-	-	FEB-MAY NOV-NOV	
141	Atlantic spadefish		2	2	2	2	2	2	2	2	2	2	2	2	-	-	-	-	JAN-DEC
	Gulf butterfly		2	2	2	3	2	2	2	2	2	2	2	2	-	-	-	-	JAN-DEC
	Harvestfish		1	1	1	2	2	2	2	2	2	2	2	2	-	-	-	JAN-DEC	-
	Ladyfish			1	1	2	2	1	1	1	1	1		-	-	-	-	MAR-NOV	
	Scaled sardine				2	2	2	2	2	2	2	2		-	-	-	-	APR-NOV	
	Sheepshead		2	2	3	3	3	2	3	3	2	2	2	2	FEB-MAR	FEB-APR	MAR-AUG	JAN-DEC	JAN-DEC
	Silver seatrout		1	1		1	1	1	2	2	2	1		-	-	-	-	MAY-FEB	
	Spanish mackerel				2	2	2	2	2	2	2			-	-	-	APR-OCT	AUG-OCT	
146	Inland silverside		3	3	3	3	3	3	3	3	3	3	3	3	MAR-AUG	MAR-AUG	MAR-SEP	JAN-DEC	JAN-DEC
	Longnose killifish		1	1	1	1	1	1	1	1	1	1	1	1	-	-	-	-	-
	Rough silverside		1	1	2	2	2	2	2	2	1	1	1	1	-	-	-	-	APR-FEB

**HABITAT:**

RAR#	Species	S F Conc.	J	F	M	A	M	J	J	A	S	O	N	D
154	Flax-leaf false-foxglove		X	X	X	X	X	X	X	X	X	X	X	X
162	Beardgrass		X	X	X	X	X	X	X	X	X	X	X	X
174	Chaffseed		X	X	X	X	X	X	X	X	X	X	X	X
196	Brilliant hibiscus		X	X	X	X	X	X	X	X	X	X	X	X

**INVERTEBRATE:**

RAR#	Species	S F Conc.	J	F	M	A	M	J	J	A	S	O	N	D	Spawning	Eggs	Larvae	Juveniles	Adults
105	Atlantic brief squid		2	2	2	2	2	2	2	2	2	2	2	2	-	-	-	-	JAN-DEC
	Blue crab		4	4	4	4	4	4	4	4	4	4	4	4	MAR-NOV	MAR-NOV	JAN-DEC	JAN-DEC	JAN-DEC
112	Eastern oyster		4	4	4	4	4	4	4	4	4	4	4	4	APR-NOV	-	APR-NOV	APR-NOV	JAN-DEC
114	Brown shrimp		4	4	4	4	4	4	4	4	4	4	4	4	NOV-APR	NOV-APR	FEB-NOV	MAR-NOV	JUN-AUG
	Pink shrimp		2	2	2	2	2	2	2	2	2	2	2	2	MAR-NOV	MAR-NOV	MAR-NOV	JAN-DEC	JAN-DEC
	White shrimp		4	4	3	3	3	4	4	4	4	4	4	4	MAR-OCT	MAR-NOV	JAN-DEC	JAN-DEC	JAN-DEC
143	Atlantic seabob shrimp		2	2	2	2	2	2	2	2	2	2	2	2	-	-	-	-	-
	Mantis shrimp		2	2	2	2	2	2	2	2	2	2	2	2	-	-	-	-	JAN-DEC
	Roughback shrimp		2	2	2	2	2	2	2	2	2	2	2	2	-	-	-	-	-
147	Thinstripe hermit		2	2	2	2	2	2	2	2	2	2	2	2	-	-	-	-	JAN-DEC

**MARINE MAMMAL:**

RAR#	Species	S F Conc.	J	F	M	A	M	J	J	A	S	O	N	D	Mating	Calving	Pupping	Molting
1	Bottlenose dolphin		X	X	X	X	X	X	X	X	X	X	X	X	MAR-SEP	MAR-SEP	-	-
	West Indian manatee	E VERY LOW		X	X	X	X	X	X	X	X	X	X	X	-	-	-	-
17	West Indian manatee	E HIGH		X	X	X	X	X	X	X	X	X	X	X	-	-	-	-
27	West Indian manatee	E		X	X	X	X	X	X	X	X	X	X	X	-	-	-	-

**REPTILE:**

RAR#	Species	S F Conc.	J	F	M	A	M	J	J	A	S	O	N	D	Nesting	Hatching	Interesting	Juveniles	Adults
25	Gopher tortoise	P T	X	X	X	X	X	X	X	X	X	X	X	X	-	-	-	-	JAN-DEC
29	Alabama red-bellied turtle	P E	X	X	X	X	X	X	X	X	X	X	X	X	APR-AUG	-	-	JAN-DEC	JAN-DEC
	Alligator snapping turtle	P	X	X	X	X	X	X	X	X	X	X	X	X	APR-MAY	-	-	JAN-DEC	JAN-DEC

**HUMAN USE RESOURCES:**

**BOAT RAMP:**

HUN#	Name	Contact	Phone
9	ALBA CLUB BOAT LAUNCH		
10	BOAT RAMP		
16	SOUTHERN MARINE BOAT LANDING		

**MARINA:**

HUN#	Name	Contact	Phone
31	ALBA CLUB MARINA		
32	BAY YACHTING CENTER		
33	BEACHCOMBER DRY DOCK AND MARINA		
35	BUCCANEER YACHT CLUB		
40	DOG RIVER MARINA		
48	GRAND MARINER		
55	MOBILE YACHT CLUB		
56	MORGAN'S MARINA		
63	RIVER YACHT BASIN		
70	SOUTHERN MARINA		
72	TURNER MARINE		

Biological information shown on the maps represents known concentration areas or occurrences, but does not necessarily represent the full distribution or range of each species. This is particularly important to recognize when considering potential impacts to protected species.