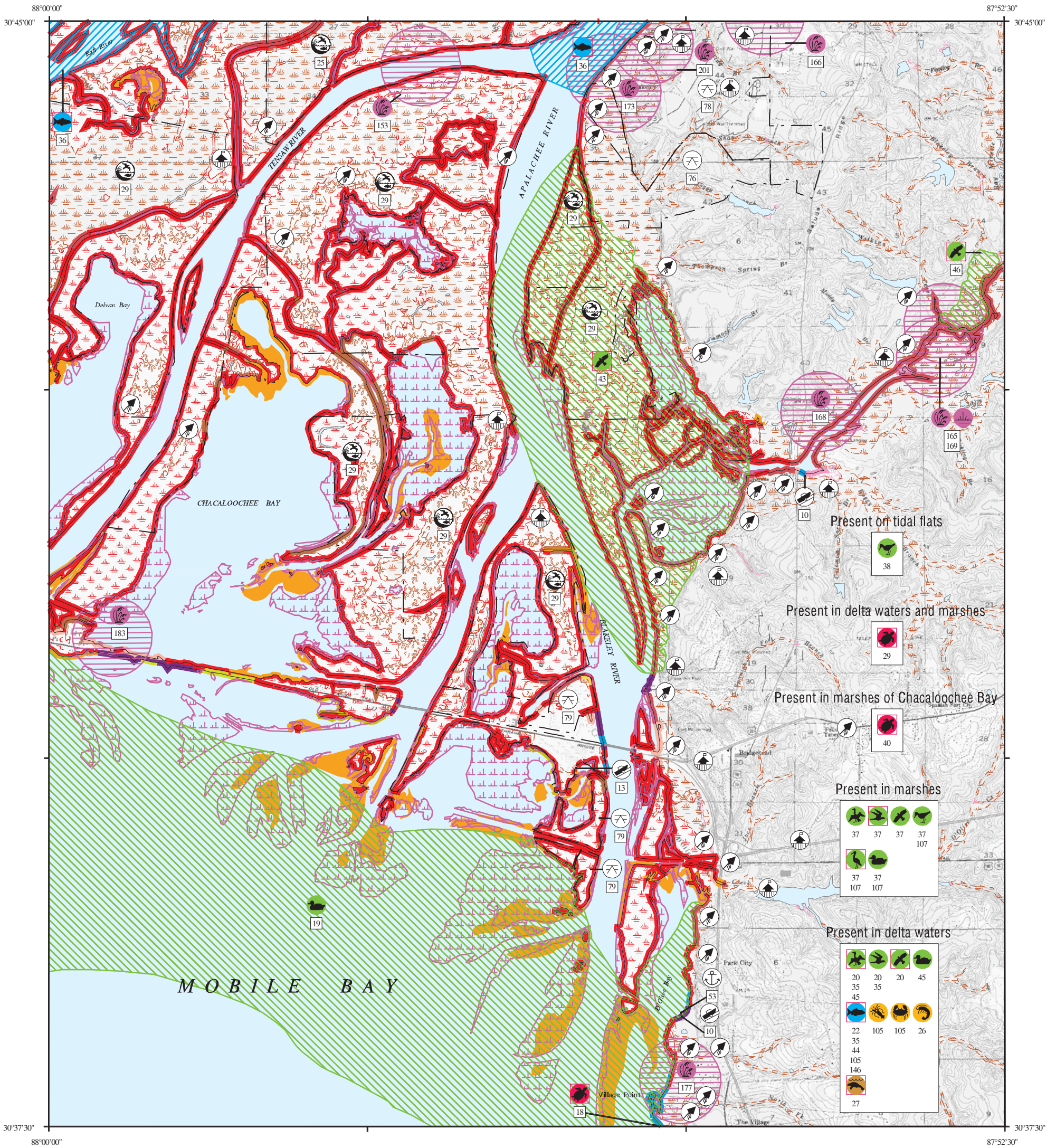


ENVIRONMENTAL SENSITIVITY INDEX MAP



SHORELINE HABITATS (ESI)

- 1B EXPOSED, SOLID MAN-MADE STRUCTURES
- 2A EXPOSED WAVE-CUT PLATFORMS IN MUD OR CLAY
2B EXPOSED SCARPS AND STEEP SLOPES IN CLAY
- 3A FINE-TO MEDIUM-GRAINED SAND BEACHES
3B SCARPS AND STEEP SLOPES IN SAND
- 4 COARSE-GRAINED SAND BEACHES
- 5 MIXED SAND AND GRAVEL BEACHES
- 6B RIPRAP
- 7 EXPOSED TIDAL FLATS
- 8A SHELTERED SCARPS IN MUD OR CLAY
8B SHELTERED, SOLID MAN-MADE STRUCTURES
8C SHELTERED RIPRAP
- 9A SHELTERED TIDAL FLATS
9B SHELTERED, VEGETATED LOW BANKS
- 10A SALT-AND BRACKISH-WATER MARSHES
- 10B FRESHWATER MARSHES
- 10C SWAMPS
- 10D SCRUB-SHRUB WETLANDS

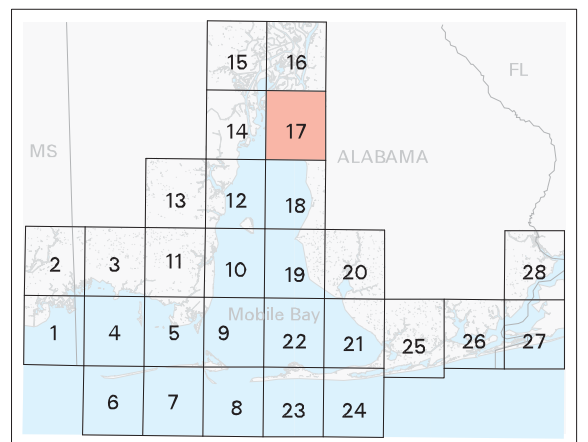


SCALE 1:50000



Not For Navigation
Published: August 2007

Published at Seattle, Washington
National Oceanic and Atmospheric Administration
National Ocean Service
Office of Response and Restoration
Emergency Response Division



Alabama: ESIMAP 17

BIOLOGICAL RESOURCES:

BIRD:

| RAR# | Species | S F Conc. | J | F | M | A | M | J | J | A | S | O | N | D | Nesting | Migrating | Molting |
|------|----------------------------|-----------|---|---|---|---|---|---|---|---|---|---|---|---|---------|-----------|---------|
| 19 | American black duck | RARE | X | X | X | X | | | | | | X | X | X | - | - | - |
| | American coot | | X | X | X | X | | | | | | X | X | X | - | - | - |
| | American wigeon | | X | X | | | | | | | | X | X | | - | - | - |
| | Blue-winged teal | | | X | X | | | | | X | | | | | - | - | - |
| | Bufflehead | | X | X | X | | | | | | | X | X | | - | - | - |
| | Canvasback | | X | X | X | | | | | | | X | X | | - | - | - |
| | Gadwall | | X | X | X | X | | | | | | X | X | X | - | - | - |
| | Greater scaup | | X | X | X | | | | | | | X | X | | - | - | - |
| | Green-winged teal | | X | X | X | | | | | | | X | X | X | - | - | - |
| | Hooded merganser | | X | X | X | X | | | | | | X | X | X | - | - | - |
| | Lesser scaup | | X | X | X | | | | | | | X | X | | - | - | - |
| | Mallard | | X | X | X | X | X | X | X | X | X | X | X | X | - | - | - |
| | Mottled duck | | X | X | X | X | X | X | X | X | X | X | X | X | - | - | - |
| | Northern pintail | | X | X | X | | | | | | | X | X | | - | - | - |
| | Northern shoveler | | X | X | X | X | | | | | | X | X | X | - | - | - |
| | Red-breasted merganser | | X | X | X | | | | | | | X | X | X | - | - | - |
| | Redhead | | X | X | X | | | | | | | X | X | | - | - | - |
| | Ring-necked duck | | X | X | X | | | | | | | X | X | | - | - | - |
| | Ruddy duck | | X | X | X | | | | | | | X | X | | - | - | - |
| | Waterfowl | VERY HIGH | X | X | X | | | | | | | X | X | | - | - | - |
| 20 | American white pelican | P | X | X | X | X | | | | | | X | X | X | - | - | - |
| | Anhinga | | X | X | X | X | X | X | X | X | X | X | X | X | - | - | - |
| | Brown pelican | | X | X | X | X | X | X | X | X | X | X | X | X | - | - | - |
| | Double-crested cormorant | | X | X | X | | | | | | | X | X | X | - | - | - |
| | Forster's tern | | X | X | X | X | | | | | | X | X | | - | - | - |
| | Herring gull | | X | X | X | X | X | X | X | X | X | X | X | X | - | - | - |
| | Laughing gull | | X | X | X | X | X | X | X | X | X | X | X | X | - | - | - |
| | Osprey | P | X | X | X | X | X | X | X | X | X | X | X | X | MAY-JUL | - | - |
| | Ring-billed gull | | X | X | X | X | | | | | | X | X | X | - | - | - |
| | Royal tern | | X | X | X | X | X | X | X | X | X | X | X | X | - | - | - |
| 35 | Bonaparte's gull | | X | X | X | | | | | | | X | X | | - | - | - |
| | Horned grebe | | X | X | X | X | | | | | | X | X | X | - | - | - |
| 37 | American avocet | HIGH | X | X | X | X | | | | | | X | X | X | - | - | - |
| | American bittern | | X | X | X | | | | | | | X | | | - | - | - |
| | American black duck | RARE | X | X | X | X | | | | | | X | X | X | - | - | - |
| | American coot | | X | X | X | X | | | | | | X | X | X | - | - | - |
| | American wigeon | | X | X | | | | | | | | X | X | | - | - | - |
| | Black skimmer | | X | X | X | X | X | X | X | X | X | X | X | X | - | - | - |
| | Canada goose | | X | X | X | X | X | X | X | X | X | X | X | X | MAR-JUL | - | - |
| | Caspian tern | | | X | X | X | X | X | | | | | | | - | - | - |
| | Common moorhen | | X | X | X | X | X | X | X | X | X | X | X | X | MAY-JUL | - | - |
| | Gadwall | | X | X | X | X | | | | | | X | X | X | - | - | - |
| | Glossy ibis | | X | X | X | X | X | X | X | X | X | X | X | X | APR-JUN | - | - |
| | Greater yellowlegs | | | X | X | X | X | X | X | X | X | | | | - | - | - |
| | Green heron | | X | X | X | X | X | X | X | X | X | X | X | X | MAY-JUL | - | - |
| | Gull-billed tern | P | | X | X | X | X | X | X | X | | | | | - | - | - |
| | King rail | | X | X | X | X | X | X | X | X | X | X | X | X | APR-AUG | - | - |
| | Least bittern | | | X | X | X | X | X | X | X | | | | | MAY-JUL | - | - |
| | Mallard | | X | X | X | X | X | X | X | X | X | X | X | X | APR-JUL | - | - |
| | Mottled duck | | X | X | X | X | X | X | X | X | X | X | X | X | APR-JUL | - | - |
| | Northern harrier | | X | X | X | X | | | | | | X | X | X | - | - | - |
| | Pied-billed grebe | | X | X | X | X | X | X | X | X | X | X | X | X | MAY-JUL | - | - |
| | Snow goose | | X | X | X | | | | | | | X | X | | - | - | - |
| | Sora | | X | X | X | X | | | | | | X | X | X | - | - | - |
| | Swallow-tailed kite | | | X | X | X | X | X | X | | | | | | MAY-JUN | - | - |
| | White ibis | | X | X | X | X | X | X | X | X | X | X | X | X | APR-JUN | - | - |
| | Wood duck | | X | X | X | X | X | X | X | X | X | X | X | X | FEB-JUL | - | - |
| | Wood stork | P E | | X | X | X | X | X | | | | | | | - | - | - |
| 38 | Black-bellied plover | | X | X | X | X | | | | | | X | X | X | - | - | - |
| | Black-necked stilt | | X | X | X | X | X | X | X | X | X | X | X | X | - | - | - |
| | Dunlin | | X | X | X | | | | | | | X | X | X | - | - | - |
| | Least sandpiper | | X | X | X | | | | | | | X | X | X | - | - | - |
| | Lesser yellowlegs | | X | X | X | X | | | | | | X | X | X | - | - | - |
| | Long-billed curlew | | | X | X | | | | | | | X | X | | - | - | - |
| | Marbled godwit | | | X | X | | | | | | | X | X | X | - | - | - |
| | Short-billed dowitcher | | X | X | X | X | | | | | | X | X | X | - | - | - |
| | Solitary sandpiper | | | X | X | X | | | | | | X | X | X | - | - | - |
| | Stilt sandpiper | | | X | X | X | | | | | | X | X | X | - | - | - |
| | Western sandpiper | | X | X | X | X | | | | | | X | X | X | - | - | - |
| | White-rumped sandpiper | | | X | X | X | | | | | | | | | - | - | - |
| | Wilson's snipe | | X | X | X | | | | | | | X | X | X | - | - | - |
| 43 | Bald eagle | P T | X | X | X | X | X | X | X | X | X | X | X | X | DEC-MAY | - | - |
| 45 | Common goldeneye | | X | X | X | | | | | | | X | X | | - | - | - |
| | Common loon | | X | X | X | X | | | | | | X | X | | - | - | - |
| 46 | Bald eagle | P T | X | X | X | X | X | X | X | X | X | X | X | X | DEC-MAY | - | - |
| 107 | Black-crowned night-heron | | | X | X | X | X | X | X | X | X | | | | APR-JUN | - | - |
| | Blue-winged teal | | | X | X | | | | | | | X | | | - | - | - |
| | Cattle egret | | | X | X | X | X | X | X | X | | | | | MAY-JUN | - | - |
| | Clapper rail | | X | X | X | X | X | X | X | X | X | X | X | X | MAY-AUG | - | - |
| | Great blue heron | | X | X | X | X | X | X | X | X | X | X | X | X | FEB-JUL | - | - |
| | Great egret | | X | X | X | X | X | X | X | X | X | X | X | X | MAR-JUN | - | - |
| | Green-winged teal | | X | X | X | | | | | | | X | X | X | - | - | - |
| | Killdeer | | X | X | X | X | X | X | X | X | X | X | X | X | APR-AUG | - | - |
| | Little blue heron | | X | X | X | X | X | X | X | X | X | X | X | X | MAR-JUL | - | - |
| | Purple gallinule | | | X | X | X | X | | | | | | | | MAY-JUL | - | - |
| | Snowy egret | | X | X | X | X | X | X | X | X | X | X | X | X | APR-JUN | - | - |
| | Tricolored heron | | X | X | X | X | X | X | X | X | X | X | X | X | MAY-JUN | - | - |
| | Willet | | X | X | X | X | X | X | X | X | X | X | X | X | MAY-AUG | - | - |
| | Yellow-crowned night-heron | | X | X | X | X | X | X | X | X | X | X | X | X | APR-JUL | - | - |

FISH:

| RAR# | Species | S F Conc. | J | F | M | A | M | J | J | A | S | O | N | D | Spawning | Eggs | Larvae | Juveniles | Adults |
|------|---------------------|-----------|---|---|---|---|---|---|---|---|---|---|---|---|----------|---------|---------|-----------|---------|
| 22 | American eel | | | | 1 | 1 | 1 | 1 | 1 | 1 | 1 | 1 | 1 | | - | - | - | - | MAR-OCT |
| | Black crappie | | | | 1 | 1 | 1 | 1 | 1 | | | | | | - | - | - | - | APR-SEP |
| | Bluegill | | 1 | 1 | 1 | 1 | | | | | | | 1 | | - | - | - | - | DEC-MAY |
| | Fringed flounder | | 2 | 2 | 2 | 2 | 2 | 2 | 2 | 2 | 2 | 2 | 2 | 2 | - | - | - | - | JAN-DEC |
| | Gizzard shad | | 2 | 2 | 2 | 2 | 2 | 2 | 2 | 2 | 2 | 2 | 2 | 2 | MAR-AUG | MAR-AUG | MAR-SEP | JAN-DEC | JAN-DEC |
| | Largemouth bass | | 1 | 2 | 2 | 2 | 2 | 2 | 2 | 2 | 2 | | | | - | - | - | - | - |
| | Rainwater killifish | | 2 | 2 | 2 | 2 | 2 | 2 | 2 | 2 | 2 | 2 | 2 | 2 | - | - | - | - | JAN-DEC |
| | Redear sunfish | | 1 | 1 | 1 | 1 | 1 | 2 | 2 | 2 | 1 | 1 | 1 | | - | - | - | - | - |
| | Spotted sunfish | | 1 | 1 | 1 | 1 | | | | | | | | | - | - | - | - | - |
| 35 | Sheepshead minnow | | 3 | 3 | 3 | 3 | 3 | 3 | 3 | 3 | 3 | 3 | 3 | 3 | APR-OCT | APR-OCT | APR-NOV | DEC-MAR | JAN-DEC |
| | Shiners | | 2 | 2 | 2 | 2 | 2 | 2 | 2 | 2 | 2 | 2 | 2 | 2 | - | - | - | - | JAN-DEC |
| 36 | Black crappie | | | | 1 | 1 | 1 | 1 | | | | | | | - | - | - | - | APR-SEP |
| | Bluegill | | 1 | 1 | 1 | 1 | | | | | | | 1 | | - | - | - | - | DEC-MAY |
| | Gulf killifish | | 3 | 3 | 3 | 3 | 3 | 3 | 3 | 3 | 3 | 3 | 3 | 3 | MAR-SEP | MAR-SEP | MAR-OCT | JAN-DEC | JAN-DEC |
| | Gulf sturgeon | P T | 1 | 1 | 1 | 1 | | | | | | | | | FEB-APR | - | FEB-MAY | FEB-MAY | - |
| | Largemouth bass | | X | X | X | X | X | X | X | X | X | X | X | X | MAR-MAY | - | - | - | JAN-DEC |

Biological information shown on the maps represents known concentration areas or occurrences, but does not necessarily represent the full distribution or range of each species. This is particularly important to recognize when considering potential impacts to protected species.

Alabama: ESIMAP 17 (cont.)

BIOLOGICAL RESOURCES: (cont.)

FISH: (cont.)

| RAR# | Species | S F Conc. | J | F | M | A | M | J | J | A | S | O | N | D | Spawning | Eggs | Larvae | Juveniles | Adults |
|------|---------------------|-----------|---|---|---|---|---|---|---|---|---|---|---|---|----------|---------|---------|-----------|---------|
| 36 | Longear sunfish | | X | X | X | X | X | X | X | X | X | X | X | X | MAY-JUN | - | - | - | FEB-SEP |
| | Peamouth | | X | X | X | X | X | X | X | X | X | X | X | X | - | - | - | - | JAN-DEC |
| | Rainwater killifish | | 2 | 2 | 2 | 2 | 2 | 2 | 2 | 2 | 2 | 2 | 2 | 2 | - | - | - | - | JAN-DEC |
| | Sheepshead minnow | | 3 | 3 | 3 | 3 | 3 | 3 | 3 | 3 | 3 | 3 | 3 | 3 | APR-OCT | APR-OCT | APR-NOV | DEC-MAR | JAN-DEC |
| | Shiners | | X | X | X | X | X | X | X | X | X | X | X | X | - | - | - | - | JAN-DEC |
| | Spotted sunfish | | 1 | 1 | 1 | 1 | 1 | 1 | 1 | 1 | 1 | 1 | 1 | 1 | - | - | - | - | - |
| | Striped bass | | | | | X | X | X | | | | | | | APR-JUN | - | - | - | APR-JUN |
| | Yellow bass | | X | X | X | X | X | | | | | | X | | - | - | - | - | DEC-MAY |
| 44 | Chain pickerel | | | | | | 1 | | | | | | | | - | - | - | - | MAY-MAY |
| | Marsh killifish | | 2 | | 2 | 2 | 2 | 2 | 2 | 2 | 2 | 2 | 2 | 2 | - | - | - | - | MAY-JAN |
| | Paddlefish | P | 1 | | | | | | | | | | | | - | - | - | - | JAN-JAN |
| | Striped bass | | | | 1 | | | | | | | | | | - | - | - | - | MAR-MAR |
| | Yellow bass | | | | | 1 | | | | | | | | | - | - | - | - | MAY-MAY |
| 105 | Atlantic croaker | | 4 | 4 | 4 | 4 | 4 | 4 | 4 | 4 | 4 | 4 | 3 | 3 | - | - | AUG-APR | JAN-DEC | MAY-DEC |
| | Bay anchovy | | 4 | 4 | 4 | 4 | 4 | 4 | 4 | 4 | 4 | 4 | 4 | 4 | FEB-SEP | FEB-NOV | FEB-DEC | JAN-DEC | JAN-DEC |
| | Bay whiff | | 2 | 2 | 2 | 3 | 3 | 3 | 3 | 3 | 3 | 3 | 3 | 2 | - | - | DEC-APR | JAN-DEC | - |
| | Blue catfish | | 1 | 2 | 2 | 2 | 1 | 1 | | | | | 1 | 1 | - | - | - | - | NOV-JUL |
| | Crevalle jack | | 2 | 2 | 2 | 2 | 2 | 2 | 2 | 2 | 2 | 2 | 2 | 2 | JAN-DEC | MAY-SEP | MAY-SEP | JAN-DEC | MAY-SEP |
| | Darter goby | | 2 | 2 | 2 | 2 | 2 | 2 | 2 | 2 | 2 | 2 | 2 | 2 | - | - | - | - | JAN-DEC |
| | Gafftopsail catfish | | | | | 1 | 1 | 2 | 2 | 1 | 2 | 1 | 1 | 1 | - | - | - | - | MAY-DEC |
| | Gray snapper | | | | | 2 | 2 | 2 | 2 | 2 | 2 | 2 | 2 | 2 | - | - | - | MAY-DEC | MAY-DEC |
| | Gulf killifish | | 3 | 3 | 3 | 3 | 3 | 3 | 3 | 3 | 3 | 3 | 3 | 3 | MAR-SEP | MAR-SEP | MAR-OCT | JAN-DEC | JAN-DEC |
| | Gulf menhaden | | 2 | 4 | 4 | 4 | 3 | 3 | 3 | 3 | 4 | 3 | 4 | 4 | - | SEP-FEB | OCT-MAY | FEB-DEC | FEB-OCT |
| | Gulf sturgeon | P T | X | X | X | X | X | X | X | X | X | X | X | X | - | - | - | - | JAN-DEC |
| | Hardhead catfish | | 2 | 2 | 2 | 3 | 3 | 3 | 3 | 3 | 3 | 3 | 2 | 2 | APR-AUG | APR-AUG | APR-SEP | JAN-DEC | JAN-DEC |
| | Red drum | | 2 | 2 | 2 | 2 | 2 | 2 | 2 | 2 | 2 | 2 | 2 | 2 | - | SEP-DEC | SEP-DEC | JAN-DEC | JUN-OCT |
| | Sand seatrout | | 2 | 2 | 4 | 4 | 4 | 4 | 4 | 3 | 3 | 3 | 2 | 2 | FEB-SEP | FEB-SEP | FEB-SEP | JAN-DEC | JAN-DEC |
| | Silver perch | | 2 | 2 | 2 | 2 | 2 | 2 | 2 | 2 | 2 | 2 | 2 | 2 | APR-AUG | APR-AUG | APR-AUG | JAN-DEC | JAN-DEC |
| | Southern flounder | | 2 | 2 | 2 | 2 | 2 | 2 | 2 | 2 | 2 | 2 | 2 | 2 | - | - | NOV-MAR | JAN-DEC | JAN-DEC |
| | Southern hake | | 1 | 1 | 2 | 2 | 2 | | | | | 1 | 1 | 1 | - | - | - | - | OCT-OCT |
| | Spot | | 4 | 4 | 4 | 4 | 4 | 4 | 4 | 3 | 3 | 3 | 3 | 3 | - | - | NOV-APR | JAN-DEC | JAN-DEC |
| | Spotted seatrout | | 3 | 3 | 3 | 3 | 3 | 3 | 3 | 3 | 3 | 3 | 3 | 3 | APR-AUG | APR-AUG | APR-OCT | JAN-DEC | JAN-DEC |
| | Striped anchovy | | 2 | 2 | 2 | 2 | 2 | 2 | 2 | 2 | 2 | 2 | 2 | 2 | - | - | - | - | JAN-DEC |
| | Striped mullet | | 3 | 3 | 3 | 3 | 3 | 3 | 3 | 3 | 3 | 3 | 3 | 3 | - | - | DEC-APR | JAN-DEC | MAY-DEC |
| | Threadfin shad | | 2 | 2 | 2 | 2 | 2 | 2 | 2 | 2 | 2 | 2 | 2 | 2 | - | - | - | - | JAN-DEC |
| | White mullet | | 1 | | 1 | 2 | 2 | 2 | 2 | 2 | 2 | 2 | 1 | 1 | - | - | - | - | MAY-JAN |
| 146 | Inland silverside | | 3 | 3 | 3 | 3 | 3 | 3 | 3 | 3 | 3 | 3 | 3 | 3 | MAR-AUG | MAR-AUG | MAR-SEP | JAN-DEC | JAN-DEC |
| | Longnose killifish | | 1 | 1 | 1 | 1 | 1 | 1 | 1 | 1 | 1 | 1 | 1 | 1 | - | - | - | - | - |
| | Rough silverside | | 1 | 1 | 2 | 2 | 2 | 2 | 2 | 2 | 1 | 1 | 1 | 1 | - | - | - | - | APR-FEB |

HABITAT:

| RAR# | Species | S F Conc. | J | F | M | A | M | J | J | A | S | O | N | D |
|------|--------------------------|-----------|---|---|---|---|---|---|---|---|---|---|---|---|
| 153 | Sweetflag | | X | X | X | X | X | X | X | X | X | X | X | X |
| 165 | Florida pondweed | | X | X | X | X | X | X | X | X | X | X | X | X |
| 166 | Crestless eulophia | | X | X | X | X | X | X | X | X | X | X | X | X |
| | Michaux orchid | | X | X | X | X | X | X | X | X | X | X | X | X |
| 168 | Hairy-peduncled beakrush | | X | X | X | X | X | X | X | X | X | X | X | X |
| 169 | Brown beakrush | | X | X | X | X | X | X | X | X | X | X | X | X |
| 173 | Shadow-witch orchid | | X | X | X | X | X | X | X | X | X | X | X | X |
| | Tiny-leaved buckthorn | | X | X | X | X | X | X | X | X | X | X | X | X |
| 177 | Loblolly bay | | X | X | X | X | X | X | X | X | X | X | X | X |
| | Nodding nixie | | X | X | X | X | X | X | X | X | X | X | X | X |
| | Spoon-flower | | X | X | X | X | X | X | X | X | X | X | X | X |
| 183 | Broad-leaf signalgrass | | X | X | X | X | X | X | X | X | X | X | X | X |
| 201 | Bog spicebush | | X | X | X | X | X | X | X | X | X | X | X | X |

INVERTEBRATE:

| RAR# | Species | S F Conc. | J | F | M | A | M | J | J | A | S | O | N | D | Spawning | Eggs | Larvae | Juveniles | Adults |
|------|----------------------|-----------|---|---|---|---|---|---|---|---|---|---|---|---|----------|---------|---------|-----------|---------|
| 26 | Brown shrimp | | 2 | 4 | 4 | 4 | 4 | 4 | 4 | 4 | 4 | 4 | 4 | 2 | - | - | FEB-NOV | MAR-NOV | JUN-AUG |
| | Pink shrimp | | 2 | 2 | 2 | 2 | 2 | 2 | 2 | 2 | 2 | 2 | 2 | 2 | - | - | AUG-OCT | MAY-JAN | JAN-DEC |
| | White shrimp | | 2 | 2 | 2 | 2 | 3 | 3 | 4 | 4 | 4 | 4 | 3 | 2 | - | - | - | JAN-DEC | JAN-MAY |
| 105 | Atlantic brief squid | | 2 | 2 | 2 | 2 | 2 | 2 | 2 | 2 | 2 | 2 | 2 | 2 | - | - | - | - | JAN-DEC |
| | Blue crab | | 4 | 4 | 4 | 4 | 4 | 4 | 4 | 4 | 4 | 4 | 4 | 4 | MAR-NOV | MAR-NOV | JAN-DEC | JAN-DEC | JAN-DEC |

MARINE MAMMAL:

| RAR# | Species | S F Conc. | J | F | M | A | M | J | J | A | S | O | N | D | Mating | Calving | Pupping | Molting |
|------|---------------------|-----------|---|---|---|---|---|---|---|---|---|---|---|---|--------|---------|---------|---------|
| 27 | West Indian manatee | E | | | | X | X | X | X | X | X | X | X | X | - | - | - | - |

REPTILE:

| RAR# | Species | S F Conc. | J | F | M | A | M | J | J | A | S | O | N | D | Nesting | Hatching | Interesting | Juveniles | Adults |
|------|----------------------------|-----------|---|---|---|---|---|---|---|---|---|---|---|---|---------|----------|-------------|-----------|---------|
| 18 | Alabama red-bellied turtle | P E | X | X | X | X | X | X | X | X | X | X | X | X | APR-AUG | - | - | JAN-DEC | JAN-DEC |
| 29 | Alabama red-bellied turtle | P E | X | X | X | X | X | X | X | X | X | X | X | X | APR-AUG | - | - | JAN-DEC | JAN-DEC |
| | Alligator snapping turtle | P | X | X | X | X | X | X | X | X | X | X | X | X | APR-MAY | - | - | JAN-DEC | JAN-DEC |
| 40 | Alabama red-bellied turtle | P E HIGH | X | X | X | X | X | X | X | X | X | X | X | X | APR-AUG | - | - | JAN-DEC | JAN-DEC |

HUMAN USE RESOURCES:

BOAT RAMP:

| HUN# | Name | Contact | Phone |
|------|------------------------------|---------|-------|
| 10 | BOAT RAMP | | |
| 13 | MEASHER STATE PARK BOAT RAMP | | |

MANAGEMENT AREA:

| HUN# | Name | Contact | Phone |
|------|-------------------------|-------------------------|--------------|
| 25 | MOBILE-TENSAW DELTA WMA | CARL FERRARO; ADCNR-SLD | 251/929-0900 |
| 29 | WL HOLLAND WMA | CARL FERRARO; ADCNR-SLD | 251/929-0900 |

MARINA:

| HUN# | Name | Contact | Phone |
|------|------------------------|---------|-------|
| 53 | LAKE FOREST YACHT CLUB | | |

PARK:

| HUN# | Name | Contact | Phone |
|------|------------------------------|-------------------------|--------------|
| 76 | BLAKELEY ADDITION FW 8 | CARL FERRARO; ADCNR-SLD | 251/929-0900 |
| 78 | HISTORIC BLAKELEY STATE PARK | CARL FERRARO; ADCNR-SLD | 251/929-0900 |
| 79 | MEASHER STATE PARK | CARL FERRARO; ADCNR-SLD | 251/929-0900 |

Biological information shown on the maps represents known concentration areas or occurrences, but does not necessarily represent the full distribution or range of each species. This is particularly important to recognize when considering potential impacts to protected species.