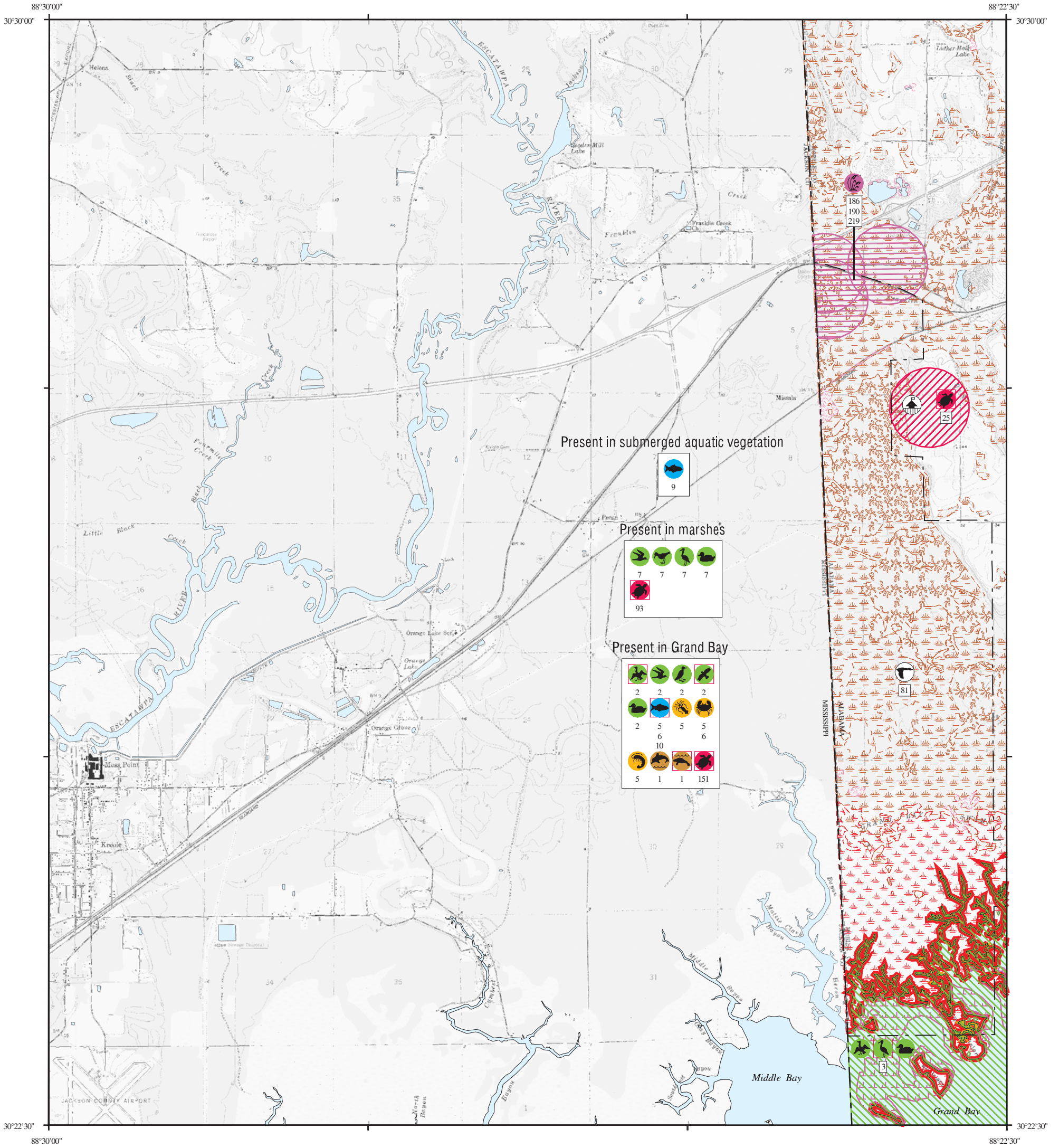


ENVIRONMENTAL SENSITIVITY INDEX MAP



SHORELINE HABITATS (ESI)

- 1B EXPOSED, SOLID MAN-MADE STRUCTURES
- 2A EXPOSED WAVE-CUT PLATFORMS IN MUD OR CLAY
2B EXPOSED SCARPS AND STEEP SLOPES IN CLAY
- 3A FINE-TO MEDIUM-GRAINED SAND BEACHES
3B SCARPS AND STEEP SLOPES IN SAND
- 4 COARSE-GRAINED SAND BEACHES
- 5 MIXED SAND AND GRAVEL BEACHES
- 6B RIPRAP
- 7 EXPOSED TIDAL FLATS
- 8A SHELTERED SCARPS IN MUD OR CLAY
- 8B SHELTERED, SOLID MAN-MADE STRUCTURES
- 8C SHELTERED RIPRAP
- 9A SHELTERED TIDAL FLATS
- 9B SHELTERED, VEGETATED LOW BANKS
- 10A SALT-AND BRACKISH-WATER MARSHES
- 10B FRESHWATER MARSHES
- 10C SWAMPS
- 10D SCRUB-SHRUB WETLANDS

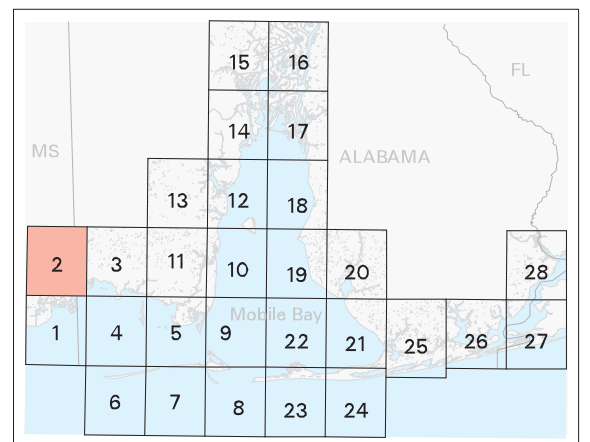


SCALE 1:50000



Not For Navigation
Published: August 2007

Published at Seattle, Washington
National Oceanic and Atmospheric Administration
National Ocean Service
Office of Response and Restoration
Emergency Response Division



Alabama: ESIMAP 2

BIOLOGICAL RESOURCES:

BIRD:

RAR#	Species	S F Conc.	J	F	M	A	M	J	J	A	S	O	N	D	Nesting	Migrating	Molting
2	American white pelican	P	X	X	X	X						X	X	X	-	-	-
	Bonaparte's gull		X	X	X	X	X					X	X		-	-	-
	Brown pelican		X	X	X	X	X	X	X	X	X	X	X	X	-	-	-
	Bufflehead		X	X	X							X	X		-	-	-
	Canvasback		X	X	X							X	X		-	-	-
	Common goldeneye		X	X	X							X	X		-	-	-
	Common loon		X	X	X	X				X	X	X	X		-	-	-
	Forster's tern		X	X	X	X						X	X		-	-	-
	Herring gull		X	X	X	X	X	X	X	X	X	X	X	X	-	-	-
	Horned grebe		X	X	X	X				X	X	X	X		-	-	-
	Laughing gull		X	X	X	X	X	X	X	X	X	X	X		-	-	-
	Least tern		X	X	X	X				X	X	X	X		-	-	-
	Lesser scaup		X	X	X							X	X		-	-	-
	Magnificent frigatebird				X	X	X	X	X	X	X	X	X		-	-	-
	Northern gannet		X	X	X	X				X	X	X	X		-	-	-
	Osprey	P	X	X	X	X	X	X	X	X	X	X	X		-	-	-
	Redhead		X	X	X							X	X		-	-	-
	Ring-billed gull		X	X	X	X	X	X	X	X	X	X	X		-	-	-
	Royal tern		X	X	X	X	X	X	X	X	X	X	X		-	-	-
3	Double-crested cormorant		X	X	X					X	X	X	X		-	-	-
	Greater scaup		X	X	X							X	X		-	-	-
	Hooded merganser		X	X	X							X	X		-	-	-
	Red-breasted merganser		X	X	X							X	X		-	-	-
	Reddish egret	P	X	X	X	X	X	X	X	X	X	X	X		-	-	-
	Ruddy duck		X	X	X							X	X		-	-	-
7	American bittern		X	X	X							X			-	-	-
	Black tern		X	X	X	X						X	X	X	-	-	-
	Black-crowned night-heron		X	X	X	X	X	X	X	X	X	X	X		APR-JUN	-	-
	Blue-winged teal		X	X								X			-	-	-
	Caspian tern		X	X	X	X	X	X	X	X	X	X	X		-	-	-
	Clapper rail		X	X	X	X	X	X	X	X	X	X	X		MAY-AUG	-	-
	Common moorhen		X	X	X	X	X	X	X	X	X	X	X		MAY-JUL	-	-
	Great blue heron		X	X	X	X	X	X	X	X	X	X	X		FEB-MAY	-	-
	Great egret		X	X	X	X	X	X	X	X	X	X	X		MAR-JUN	-	-
	Greater yellowlegs		X	X	X	X						X	X		-	-	-
	Killdeer		X	X	X	X	X	X	X	X	X	X	X		APR-AUG	-	-
	King rail		X	X	X	X	X	X	X	X	X	X	X		APR-AUG	-	-
	Least bittern		X	X	X	X	X	X	X	X	X	X	X		MAY-JUL	-	-
	Little blue heron		X	X	X	X	X	X	X	X	X	X	X		APR-JUN	-	-
	Mottled duck		X	X	X	X	X	X	X	X	X	X	X		APR-JUL	-	-
	Purple gallinule		X	X	X	X	X	X				X	X		MAY-JUL	-	-
	Snowy egret		X	X	X	X	X	X	X	X	X	X	X		APR-JUN	-	-
	Solitary sandpiper		X	X	X	X						X	X		-	-	-
	Spotted sandpiper		X	X	X	X				X	X	X	X		-	-	-
	Tricolored heron		X	X	X	X	X	X	X	X	X	X	X		MAY-JUN	-	-
	White ibis		X	X	X	X	X	X	X	X	X	X	X		APR-JUL	-	-
	Willet		X	X	X	X	X	X	X	X	X	X	X		MAY-JUL	-	-
	Yellow-crowned night-heron		X	X	X	X	X	X	X	X	X	X	X		APR-JUL	-	-

FISH:

RAR#	Species	S F Conc.	J	F	M	A	M	J	J	A	S	O	N	D	Spawning	Eggs	Larvae	Juveniles	Adults
5	Atlantic croaker		4	4	4	4	4	3	3	3	3	3	3	3	SEP-APR	SEP-APR	OCT-APR	JAN-DEC	JAN-DEC
	Atlantic stingray		2	2	2	2	2	2	2	2	2	2	2	2	-	-	-	-	JAN-DEC
	Bay anchovy		3	3	3	4	4	4	4	4	4	4	4	4	JAN-DEC	JAN-DEC	JAN-DEC	JAN-DEC	JAN-DEC
	Bay whiff		2	2	2	2	2	2	2	2	2	2	2	2	-	-	-	-	JAN-DEC
	Crevalle jack		2	2	2	2	2	2	2	2	2	2	2	2	JAN-DEC	MAY-SEP	MAY-SEP	JAN-DEC	MAY-SEP
	Darter goby		2	2	2	2	2	2	2	2	2	2	2	2	-	-	-	-	JAN-DEC
	Fringed flounder		2	2	2	2	2	2	2	2	2	2	2	2	-	-	-	-	JAN-DEC
	Gafftopsail catfish						1	2	2	2	1				-	-	-	-	JUN-OCT
	Gray snapper						1	1	1	1	1	1	1	1	-	-	-	-	MAY-DEC
	Gulf killifish		2	2	2	2	3	3	3	3	3	3	3	2	JAN-DEC	JAN-DEC	JAN-DEC	JAN-DEC	JAN-DEC
	Gulf menhaden		4	4	4	4	4	4	4	4	4	4	4	4	OCT-MAR	OCT-MAR	OCT-MAY	JAN-DEC	JAN-DEC
	Gulf toadfish		2	2	2	2	2	2	2	2	2	2	2	2	-	-	-	-	JAN-DEC
	Hardhead catfish		2	2	2	4	4	4	4	4	4	4	4	2	APR-AUG	APR-AUG	APR-SEP	JAN-DEC	JAN-DEC
	Least puffer		2	2	2	2	2	2	2	2	2	2	2	2	-	-	-	-	JAN-DEC
	Pigfish						1	1	1	1	1	1	2	1	-	-	-	-	MAR-NOV
	Pinfish		3	3	3	3	3	4	4	4	4	4	3	3	NOV-MAR	NOV-MAR	NOV-APR	JAN-DEC	JAN-DEC
	Red drum		2	2	2	2	2	2	2	2	2	2	2	2	SEP-NOV	SEP-FEB	SEP-FEB	JAN-DEC	JAN-DEC
	Sand seatrout		4	4	4	4	4	4	4	4	4	4	4	4	MAR-OCT	MAY-OCT	FEB-OCT	JAN-DEC	JAN-DEC
	Silver perch		3	3	3	3	3	3	3	3	3	3	3	3	MAY-SEP	MAY-SEP	MAY-SEP	JAN-DEC	JAN-DEC
	Southern flounder		3	3	3	3	3	3	3	3	2	3	3	3	SEP-JAN	SEP-JAN	SEP-APR	JAN-DEC	JAN-DEC
	Southern kingfish		2	2	3	3	3	3	3	3	3	3	3	3	-	-	-	-	JAN-DEC
	Spot		4	4	4	4	4	4	4	4	4	4	4	4	NOV-MAR	NOV-APR	NOV-MAR	JAN-DEC	JAN-DEC
	Spotfin mojarra						1	2	2	1	1	1	1	1	-	-	-	-	MAY-NOV
	Spotted seatrout		3	3	3	3	3	3	3	3	3	3	3	3	MAR-SEP	MAR-SEP	MAR-OCT	JAN-DEC	JAN-DEC
	Star drum		1	1	2	2	2	2	2	2	2	1	1	1	-	-	-	-	JAN-DEC
	Striped anchovy						1	1	1	1	1	1	1	1	-	-	-	-	APR-DEC
	Striped mullet		4	4	4	4	4	4	4	4	4	4	4	4	NOV-MAY	NOV-MAY	NOV-MAY	JAN-DEC	JAN-DEC
	Threadfin shad		2	2	2	2	2	1	1	1	1	1	2	2	-	-	-	-	JAN-DEC
	White mullet		1	1	1	1	1	1	1	1	1	1	1	1	-	-	-	-	JAN-DEC
6	Inland silverside		3	3	3	3	3	4	4	4	4	4	4	3	JAN-DEC	JAN-DEC	JAN-DEC	JAN-DEC	JAN-DEC
	Longnose killifish		1	1	1	1	2	1	1	1	1	1	1	1	JUN-JUL	-	-	-	JAN-DEC
	Marsh killifish		1	1	1	1	1	1	1	1	1	1	1	1	-	-	-	-	JAN-DEC
	Northern kingfish						1	2	2	1	1	1	1	1	-	-	-	-	MAR-DEC
	Rough silverside		3	3	3	3	3	4	4	4	4	4	4	3	JAN-DEC	JAN-DEC	JAN-DEC	JAN-DEC	JAN-DEC
	Sheepshead minnow		3	3	3	3	3	3	3	3	3	3	3	3	JAN-DEC	JAN-DEC	JAN-DEC	JAN-DEC	JAN-DEC
9	Lined seahorse		1	1	1	1	1	1	1	1	1	1	1	1	-	-	-	-	JAN-DEC
10	Gulf sturgeon	P T	X	X	X	X	X	X	X	X	X	X	X	X	-	-	-	-	JAN-DEC

HABITAT:

RAR#	Species	S F Conc.	J	F	M	A	M	J	J	A	S	O	N	D
186	Many-flowered grass-pink		X	X	X	X	X	X	X	X	X	X	X	X
190	Georgia tickseed		X	X	X	X	X	X	X	X	X	X	X	X
219	Yellow fringeless orchid		X	X	X	X	X	X	X	X	X	X	X	X

INVERTEBRATE:

RAR#	Species	S F Conc.	J	F	M	A	M	J	J	A	S	O	N	D	Spawning	Eggs	Larvae	Juveniles	Adults
5	Atlantic brief squid		2	2	2	2	2	2	2	2	2	2	2	2	-	-	-	-	JAN-DEC
	Blue crab		4	4	3	4	4	4	4	4	4	4	4	4	MAR-NOV	MAR-NOV	MAR-DEC	JAN-DEC	JAN-DEC
	Brown shrimp		4	4	4	4	4	4	4	4	4	4	4	4	NOV-APR	NOV-APR	FEB-NOV	JAN-DEC	JAN-DEC
	Grass shrimp		3	3	3	3	3	3	3	3	3	3	3	2	-	-	-	-	JAN-DEC
	Pink shrimp		1	1	2	2	2	2	2	2	2	2	2	2	MAR-NOV	MAR-NOV	MAR-NOV	JAN-DEC	JAN-DEC
	White shrimp		4	4	3	3	3	4	4	4	4	4	4	4	MAR-OCT	MAR-NOV	JAN-DEC	JAN-DEC	JAN-DEC
6	Thinstripe hermit		2	2	2	2	2	2	2	2	2	2	2	2	-	-	-	-	JAN-DEC

Biological information shown on the maps represents known concentration areas or occurrences, but does not necessarily represent the full distribution or range of each species. This is particularly important to recognize when considering potential impacts to protected species.

Alabama: ESIMAP 2 (cont.)

BIOLOGICAL RESOURCES: (cont.)

MARINE MAMMAL:

RAR#	Species	S F Conc.	J	F	M	A	M	J	J	A	S	O	N	D	Mating	Calving	Pupping	Molting
1	Bottlenose dolphin		X	X	X	X	X	X	X	X	X	X	X	X	MAR-SEP	MAR-SEP	-	-
	West Indian manatee	E VERY LOW						X	X	X	X	X	X		-	-	-	

REPTILE:

RAR#	Species	S F Conc.	J	F	M	A	M	J	J	A	S	O	N	D	Nesting	Hatching	Internesting	Juveniles	Adults
25	Gopher tortoise	P T	X	X	X	X	X	X	X	X	X	X	X	X	-	-	-	-	JAN-DEC
93	Mississippi diamondback terrapin	P	X	X	X	X	X	X	X	X	X	X	X	X	APR-AUG	-	-	JAN-DEC	JAN-DEC
151	Green sea turtle	P T						X	X	X	X	X	X		-	-	MAR-NOV	APR-SEP	
	Kemp's ridley sea turtle	P E						X	X	X	X	X	X		-	-	MAR-NOV	APR-SEP	
	Leatherback sea turtle	P E						X	X	X	X	X	X		-	-	MAR-NOV	-	
	Loggerhead sea turtle	P T						X	X	X	X	X	X		-	-	MAR-NOV	APR-SEP	

HUMAN USE RESOURCES:

WILDLIFE REFUGE:

HUN#	Name	Contact	Phone
81	GRAND BAY NATIONAL WILDLIFE REFUGE	USFWS	228/475-0765

Biological information shown on the maps represents known concentration areas or occurrences, but does not necessarily represent the full distribution or range of each species. This is particularly important to recognize when considering potential impacts to protected species.