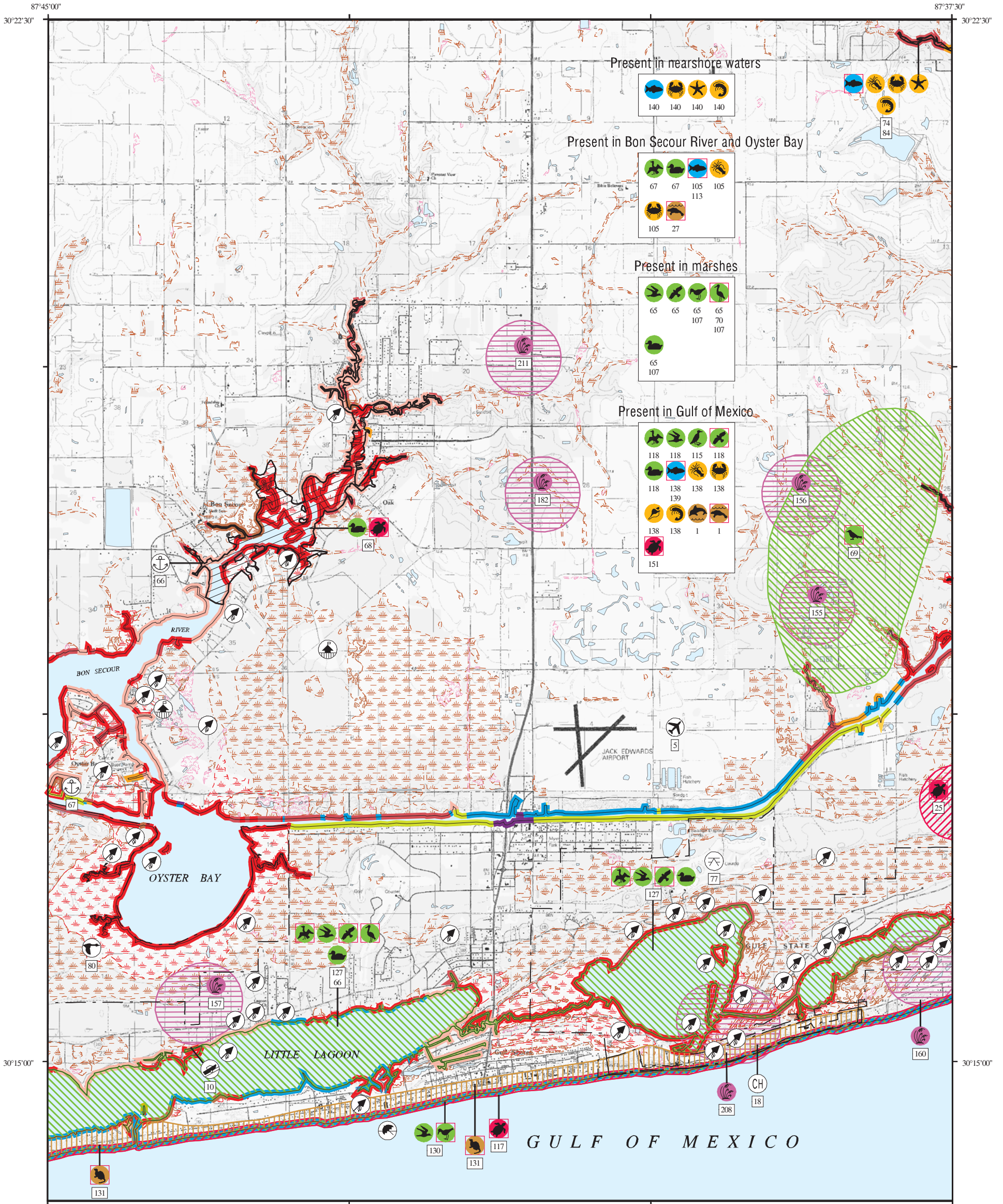


ENVIRONMENTAL SENSITIVITY INDEX MAP



87°45'00" 30°15'00" 87°37'30" 30°22'30"

SHORELINE HABITATS (ESI)

- 1B EXPOSED, SOLID MAN-MADE STRUCTURES
- 2A EXPOSED WAVE-CUT PLATFORMS IN MUD OR CLAY
- 2B EXPOSED SCARPS AND STEEP SLOPES IN CLAY
- 3A FINE-TO MEDIUM-GRAINED SAND BEACHES
- 3B SCARPS AND STEEP SLOPES IN SAND
- 4 COARSE-GRAINED SAND BEACHES
- 5 MIXED SAND AND GRAVEL BEACHES
- 6B RIPRAP
- 7 EXPOSED TIDAL FLATS
- 8A SHELTERED SCARPS IN MUD OR CLAY
- 8B SHELTERED, SOLID MAN-MADE STRUCTURES
- 8C SHELTERED RIPRAP
- 9A SHELTERED TIDAL FLATS
- 9B SHELTERED, VEGETATED LOW BANKS
- 10A SALT-AND BRACKISH-WATER MARSHES
- 10B FRESHWATER MARSHES
- 10C SWAMPS
- 10D SCRUB-SHRUB WETLANDS

SCALE 1:52000

1 0.5 0 1 KILOMETER

1 0.5 0 1 MILE

Not For Navigation
Published: August 2007

Published at Seattle, Washington
National Oceanic and Atmospheric Administration
National Ocean Service
Office of Response and Restoration
Emergency Response Division

		15		16			
		14		17			
		13		12		18	
2	3	11	10	19	20	28	
1	4	5	9	22	21	25	26
		6		7		8	
		23		24			

MS ALABAMA FL

Mobile Bay

Alabama: ESIMAP 25

BIOLOGICAL RESOURCES:

BIRD:

RAR#	Species	S F Conc.	J	F	M	A	M	J	J	A	S	O	N	D	Nesting	Migrating	Molting
65	American bittern		X	X	X									X	-	-	-
	American coot		X	X	X	X							X	X	X	-	-
	American wigeon		X	X									X	X	-	-	-
	Canada goose		X	X	X	X	X	X	X	X	X	X	X	X	MAR-JUN	-	-
	Caspian tern		X	X	X	X	X	X	X	X	X	X	X	X	-	-	-
	Common moorhen		X	X	X	X	X	X	X	X	X	X	X	X	MAY-JUL	-	-
	Gadwall		X	X	X								X	X	X	-	-
	Green-backed heron		X	X	X	X	X	X	X	X	X	X	X	X	MAY-JUL	-	-
	King rail		X	X	X	X	X	X	X	X	X	X	X	X	-	-	-
	Least bittern				X	X	X	X	X	X	X	X	X	X	-	-	-
	Mallard		X	X	X	X	X	X	X	X	X	X	X	X	-	-	-
	Mottled duck		X	X	X	X	X	X	X	X	X	X	X	X	APR-JUL	-	-
	Northern harrier		X	X	X	X					X	X	X	X	-	-	-
	Sora		X	X	X	X				X	X	X	X	X	-	-	-
	Spotted sandpiper		X	X	X	X				X	X	X	X	X	-	-	-
	Virginia rail		X	X	X								X	X	-	-	-
	White ibis		X	X	X	X	X	X	X	X	X	X	X	X	APR-JUN	-	-
	Wilson's snipe		X	X	X								X	X	X	-	-
	Wood duck		X	X	X	X	X	X	X	X	X	X	X	X	FEB-JUL	-	-
66	Black skimmer		X	X	X	X	X	X	X	X	X	X	X	X	-	-	-
	Reddish egret	P			X	X	X	X	X	X	X	X	X	X	-	-	-
67	Anhinga		X	X	X								X	X	X	-	-
	Bufflehead		X	X	X								X	X	-	-	-
	Greater scaup		X	X	X								X	X	-	-	-
	Lesser scaup		X	X	X								X	X	-	-	-
	Pied-billed grebe		X	X	X	X	X	X	X	X	X	X	X	X	-	-	-
	Red-breasted merganser		X	X	X								X	X	X	-	-
68	Blue-winged teal		X	X									X		-	-	-
69	Red-cockaded woodpecker	P E	X	X	X	X	X	X	X	X	X	X	X	X	APR-JUN	-	-
70	Mississippi sandhill crane	P E	X	X	X								X		-	-	-
107	Black-crowned night-heron		X	X	X	X	X	X	X	X	X	X	X	X	APR-JUN	-	-
	Blue-winged teal		X	X									X		-	-	-
	Cattle egret		X	X	X	X	X	X	X	X	X	X	X	X	MAY-JUN	-	-
	Clapper rail		X	X	X	X	X	X	X	X	X	X	X	X	MAY-AUG	-	-
	Great blue heron		X	X	X	X	X	X	X	X	X	X	X	X	FEB-JUL	-	-
	Great egret		X	X	X	X	X	X	X	X	X	X	X	X	MAR-JUN	-	-
	Green-winged teal		X	X	X								X	X	X	-	-
	Killdeer		X	X	X	X	X	X	X	X	X	X	X	X	APR-AUG	-	-
	Little blue heron		X	X	X	X	X	X	X	X	X	X	X	X	MAR-JUL	-	-
	Purple gallinule		X	X	X	X	X	X	X	X	X	X	X	X	MAY-JUL	-	-
	Snowy egret		X	X	X	X	X	X	X	X	X	X	X	X	APR-JUN	-	-
	Tricolored heron		X	X	X	X	X	X	X	X	X	X	X	X	MAY-JUN	-	-
	Willet		X	X	X	X	X	X	X	X	X	X	X	X	MAY-AUG	-	-
	Yellow-crowned night-heron		X	X	X	X	X	X	X	X	X	X	X	X	APR-JUL	-	-
115	Magnificent frigatebird		X	X	X	X	X	X	X	X	X	X	X	X	-	-	-
	Northern gannet	COMMON	X	X	X	X							X	X	X	-	-
118	Bonaparte's gull		X	X	X	X							X	X	-	-	-
	Brown pelican		X	X	X	X	X	X	X	X	X	X	X	X	-	-	-
	Common loon		X	X	X	X							X	X	X	-	-
	Double-crested cormorant		X	X	X								X	X	X	-	-
	Herring gull		X	X	X	X	X	X	X	X	X	X	X	X	-	-	-
	Laughing gull		X	X	X	X	X	X	X	X	X	X	X	X	-	-	-
	Osprey	P	X	X	X	X	X	X	X	X	X	X	X	X	-	-	-
	Red-breasted merganser		X	X	X								X	X	X	-	-
	Ring-billed gull		X	X	X	X	X	X	X	X	X	X	X	X	-	-	-
	Royal tern		X	X	X	X	X	X	X	X	X	X	X	X	-	-	-
	Surf scoter		X	X									X	X	-	-	-
	White-winged scoter		X	X									X	X	-	-	-
127	American white pelican	P	X	X	X								X	X	X	-	-
	Bonaparte's gull		X	X	X	X							X	X	-	-	-
	Brown pelican		X	X	X	X	X	X	X	X	X	X	X	X	-	-	-
	Bufflehead		X	X	X								X	X	-	-	-
	Canvasback		X	X	X								X	X	-	-	-
	Common goldeneye		X	X	X								X	X	-	-	-
	Common loon		X	X	X	X							X	X	X	-	-
	Double-crested cormorant		X	X	X								X	X	X	-	-
	Forster's tern		X	X	X								X	X	-	-	-
	Greater scaup		X	X	X								X	X	-	-	-
	Herring gull		X	X	X	X	X	X	X	X	X	X	X	X	-	-	-
	Hooded merganser		X	X	X								X	X	-	-	-
	Horned grebe		X	X	X	X							X	X	X	-	-
	Laughing gull		X	X	X	X	X	X	X	X	X	X	X	X	-	-	-
	Lesser scaup		X	X	X								X	X	-	-	-
	Osprey	P	X	X	X	X	X	X	X	X	X	X	X	X	-	-	-
	Red-breasted merganser		X	X	X								X	X	X	-	-
	Redhead		X	X	X								X	X	-	-	-
	Ring-billed gull		X	X	X	X	X	X	X	X	X	X	X	X	-	-	-
	Royal tern		X	X	X	X	X	X	X	X	X	X	X	X	-	-	-
	Ruddy duck		X	X	X								X	X	-	-	-
130	American oystercatcher	P	X	X	X	X	X	X	X	X	X	X	X	X	-	-	-
	Black tern		X	X	X	X							X	X	-	-	-
	Black-bellied plover		X	X	X	X							X	X	-	-	-
	Dunlin		X	X	X								X	X	-	-	-
	Greater yellowlegs		X	X	X								X	X	-	-	-
	Least sandpiper		X	X	X								X	X	-	-	-
	Lesser yellowlegs		X	X	X	X							X	X	X	-	-
	Red knot		X	X	X								X		-	-	-
	Ruddy turnstone		X	X	X								X	X	-	-	-
	Sanderling		X	X	X	X				X	X	X	X	X	-	-	-
	Semipalmated plover		X	X	X								X	X	-	-	-
	Semipalmated sandpiper		X	X	X								X	X	-	-	-
	Short-billed dowitcher		X	X	X								X	X	-	-	-
	Spotted sandpiper		X	X	X								X	X	X	-	-
	Western sandpiper		X	X	X	X	X	X	X	X	X	X	X	X	-	-	-
	Whimbrel		X	X	X	X	X	X	X	X	X	X	X	X	-	-	-
	Willet		X	X	X	X	X	X	X	X	X	X	X	X	-	-	-

FISH:

RAR#	Species	S F Conc.	J	F	M	A	M	J	J	A	S	O	N	D	Spawning	Eggs	Larvae	Juveniles	Adults
74	Atlantic croaker		2	4	4	4	4	4	3	3	3	2	2	2	-	-	AUG-APR	JAN-DEC	MAY-DEC
	Atlantic stingray		2	2	2	2	2	2	2	2	2	2	2	2	-	-	-	-	JAN-DEC
	Bay anchovy		3	3	3	4	4	4	4	3	3	4	4	3	FEB-SEP	FEB-OCT	FEB-DEC	JAN-DEC	JAN-DEC
	Bay whiff		2	2	2	3	3	3	2	2	2	2	2	2	-	DEC-APR	-	JAN-DEC	-
	Bighead searobin		2	2	2	2	2	2	2	2	2	2	2	2	-	-	-	-	JAN-DEC
	Blackcheek tonguefish		2	2	2	2	2	2	2	2	2	2	2	2	-	-	-	-	JAN-DEC
	Blue																		

Alabama: ESIMAP 25 (cont.)

BIOLOGICAL RESOURCES: (cont.)

FISH: (cont.)

RAR#	Species	S F Conc.	J	F	M	A	M	J	J	A	S	O	N	D	Spawning	Eggs	Larvae	Juveniles	Adults
74	Fringed flounder		2	2	2	2	2	2	2	2	2	2	2	2	-	-	-	-	JAN-DEC
	Gafftopsail catfish					1	2	2	2	2	2			-	-	-	-	MAY-OCT	
	Gray snapper							1	1	1	1	1	1	-	-	-	-	AUG-DEC	
	Gulf killifish		2	1	1	1	1	1	1	1	1	1	1	-	-	-	-	JAN-DEC	
	Gulf menhaden		2	2	2	3	3	3	3	2	2	2	2	-	SEP-MAR	OCT-MAY	JAN-DEC	JAN-DEC	
	Gulf sturgeon	P T	X	X	X	X	X	X	X	X	X	X	X	-	-	-	-	JAN-DEC	
	Hardhead catfish		3	3	3	3	3	3	3	3	3	3	3	MAY-AUG	MAY-AUG	MAY-SEP	JAN-DEC	JAN-DEC	
	Inshore lizardfish		1	1	1	2	2	2	2	2	2	2	2	-	-	-	-	JAN-DEC	
	Largemouth bass					1	1	1	1	1	1	1	1	-	-	-	-	APR-NOV	
	Least puffer		1	1	1	2	2	2	2	1	1	2	2	-	-	-	-	JAN-DEC	
	Longnose gar		1	1		1	2			2	2	1		-	-	-	-	MAY-MAY	
																		AUG-SEP	
	Pinfish		2	2	2	3	3	3	3	3	3	2	2	-	-	DEC-APR	JAN-DEC	JAN-DEC	
	Red drum		2	2	2	2	2	2	2	2	2	2	2	SEP-NOV	SEP-NOV	SEP-NOV	JAN-DEC	JAN-DEC	
	Redear sunfish		1					1				1	1	-	-	-	-	JUL-JUL	
																		NOV-JAN	
	Sand seatrout		2	2	2	2	2	2	2	2	2	2	2	MAR-AUG	MAR-OCT	MAR-OCT	JAN-DEC	JAN-DEC	
	Silver perch		2	2	2	2	2	2	2	2	2	2	2	-	APR-JUL	APR-AUG	APR-JUL	FEB-DEC	
	Southern flounder		2	2	2	2	2	2	2	2	2	2	2	-	-	NOV-MAR	JAN-DEC	JAN-DEC	
	Spotfin mojarra		2	1	1	1	1	3	3	3	3	3	3	-	-	-	-	JAN-DEC	
	Spotted seatrout		2	2	2	2	2	2	2	2	2	2	2	APR-SEP	APR-SEP	APR-OCT	JAN-DEC	JAN-DEC	
	Striped anchovy		2	2	2	2	2	2	2	2	2	2	2	-	-	-	-	JAN-DEC	
	Striped mullet		3	3	3	3	3	3	3	3	3	3	3	-	-	NOV-MAR	JAN-DEC	MAY-DEC	
	Threadfin shad		1	1	1	1	1	1	1	1	1	1	1	-	-	-	-	JAN-DEC	
	White mullet					1		1	1	1	1	1		-	-	-	-	MAR-MAR	
																		JUN-JUN	
84	Inland silverside		3	3	3	3	3	3	3	3	3	3	3	MAR-SEP	MAR-SEP	MAR-OCT	JAN-DEC	JAN-DEC	
	Longnose killifish		1					1						-	-	-	-	FEB-FEB	
																		JUL-JUL	
	Marsh killifish		1	1	1	1			1	1			1	-	-	-	-	JUL-AUG	
																		DEC-APR	
	Rainwater killifish		1	1	1	1	1	1				1	1	-	-	-	-	NOV-JUN	
	Rough silverside							2	2	1				-	-	-	-	JUN-AUG	
	Sailfin molly		2	2	1	1	1	1	1	1	1	1	2	-	-	-	-	SEP-JUL	
	Sheepshead minnow		2	2	2	2	2	2	2	2	2	2	2	APR-OCT	APR-OCT	APR-NOV	JAN-DEC	JAN-DEC	
105	Atlantic croaker		4	4	4	4	4	4	4	4	4	4	3	-	-	AUG-APR	JAN-DEC	MAY-DEC	
	Bay anchovy		4	4	4	4	4	4	4	4	4	4	4	FEB-SEP	FEB-NOV	FEB-DEC	JAN-DEC	JAN-DEC	
	Bay whiff		2	2	2	3	3	3	3	3	3	3	2	-	-	DEC-APR	JAN-DEC	-	
	Blue catfish		1	2	2	2	2	1	1			1	1	-	-	-	-	NOV-JUL	
	Crevalle jack		2	2	2	2	2	2	2	2	2	2	2	JAN-DEC	MAY-SEP	MAY-SEP	JAN-DEC	MAY-SEP	
	Darter goby		2	2	2	2	2	2	2	2	2	2	2	-	-	-	-	JAN-DEC	
	Gafftopsail catfish							1	1	2	2	1	2	-	-	-	-	MAY-DEC	
	Gray snapper							2	2	2	2	2	2	-	-	-	-	MAY-DEC	
	Gulf killifish		3	3	3	3	3	3	3	3	3	3	3	MAR-SEP	MAR-SEP	MAR-OCT	JAN-DEC	JAN-DEC	
	Gulf menhaden		2	4	4	4	4	3	3	3	3	4	3	-	SEP-FEB	OCT-MAY	FEB-DEC	FEB-OCT	
	Gulf sturgeon	P T	X	X	X	X	X	X	X	X	X	X	X	-	-	-	-	JAN-DEC	
	Hardhead catfish		2	2	2	3	3	3	3	3	3	3	2	APR-AUG	APR-AUG	APR-SEP	JAN-DEC	JAN-DEC	
	Red drum		2	2	2	2	2	2	2	2	2	2	2	-	SEP-DEC	SEP-DEC	JAN-DEC	JUN-OCT	
	Sand seatrout		2	2	4	4	4	4	4	3	3	3	2	FEB-SEP	FEB-SEP	FEB-SEP	JAN-DEC	JAN-DEC	
	Silver perch		2	2	2	2	2	2	2	2	2	2	2	APR-AUG	APR-AUG	APR-AUG	JAN-DEC	JAN-DEC	
	Southern flounder		2	2	2	2	2	2	2	2	2	2	2	-	-	NOV-MAR	JAN-DEC	JAN-DEC	
	Southern hake		1	1	2	2	2			1	1			-	-	-	-	OCT-OCT	
																		DEC-MAY	
	Spot		4	4	4	4	4	4	4	3	3	3	3	-	-	NOV-APR	JAN-DEC	JAN-DEC	
	Spotted seatrout		3	3	3	3	3	3	3	3	3	3	3	APR-AUG	APR-AUG	APR-OCT	JAN-DEC	JAN-DEC	
	Striped anchovy		2	2	2	2	2	2	2	2	2	2	2	-	-	-	-	JAN-DEC	
	Striped mullet		3	3	3	3	3	3	3	3	3	3	3	-	-	DEC-APR	JAN-DEC	MAY-DEC	
	Threadfin shad		2	2	2	2	2	2	2	2	2	2	2	-	-	-	-	JAN-DEC	
	White mullet		1			1	2	2	2	2	2	2	1	-	-	-	-	MAY-JAN	
113	Least puffer		2	2	2	2	2	2	2	2	2	2	2	-	-	-	-	JAN-DEC	
	Pinfish		3	3	3	3	3	3	3	3	3	3	3	-	-	DEC-APR	JAN-DEC	MAR-OCT	
	Skipjack herring		1	1	1	1	1	1	1				1	-	-	-	-	AUG-AUG	
																		DEC-JUN	
	Southern kingfish		2	2	2	2	3	3	3	2	2	2	2	-	-	-	-	JAN-DEC	
	Star drum		2	2	2	2	2	2	2	2	2	2	2	-	-	-	-	JAN-DEC	
138	Atlantic croaker		4	4	4	4	4	4	3	3	3	3	3	SEP-APR	SEP-APR	OCT-APR	JAN-DEC	JAN-DEC	
	Atlantic sharpnose shark							2	2	2	2	2	2	-	-	-	-	MAR-OCT	
	Atlantic stingray		2	2	2	2	2	2	2	2	2	2	2	-	-	-	-	JAN-DEC	
	Bay anchovy		4	4	4	4	4	4	4	4	4	4	4	FEB-SEP	FEB-NOV	FEB-DEC	JAN-DEC	JAN-DEC	
	Bay whiff		3	3	3	3	3	3	3	3	3	3	3	-	-	-	-	JAN-DEC	
	Bighead searobin							2	2	2	2	2	2	-	-	-	-	FEB-DEC	
	Blacktip shark							2	2	2	2	2	2	-	-	-	-	MAR-OCT	
	Blue runner									2	2			-	-	-	-	SEP-OCT	
	Bonnethead shark										1			-	-	-	-	OCT-OCT	
	Broad flounder		1	1	1	1	1	1	1					-	-	-	-	JAN-JUN	
	Bull shark							2	2	2	2	2	2	-	-	-	-	MAR-OCT	
	Cobia									1	1	1		-	-	-	-	JUL-SEP	
	Crested cusk-eel		1	1	1	1	1	1	1	1	1	1	1	-	-	-	-	JAN-DEC	
	Crevalle jack		2	2	2	2	2	2	2	2	2	2	2	JAN-DEC	MAY-SEP	MAY-SEP	JAN-DEC	MAY-SEP	
	Darter goby		2	2	2	2	2	2	2	2	2	2	2	-	-	-	-	JAN-DEC	
	Dolphin									2				-	-	-	-	SEP-SEP	
	Florida pompano							2	2	2	2	2	2	APR-SEP	APR-SEP	APR-SEP	APR-OCT	APR-OCT	
	Fringed flounder		2	2	2	2	2	2	2	2	2	2	2	-	-	-	-	JAN-DEC	
	Gafftopsail catfish							1	2	2	2	2		-	-	-	-	JUN-OCT	
	Gag							1						-	-	-	-	MAY-MAY	
	Gray snapper							1	1	1	1	1	1	-	-	-	-	MAY-DEC	
	Gulf flounder		2	2	2	2	2	2	2	2	2	2	2	NOV-FEB	NOV-FEB	NOV-FEB	JAN-DEC	JAN-DEC	
	Gulf menhaden		4	4	4	4	4	4	4	4	4	4	4	OCT-MAR	OCT-MAR	OCT-MAY	JAN-DEC	JAN-DEC	
	Hardhead catfish		2	2	2	4	4	4	4	4	4	4	2	APR-AUG	APR-AUG	APR-SEP	JAN-DEC	JAN-DEC	
	Highfin goby		2	2	2	2	2	2	2	2	2	2	2	-	-	-	-	JAN-DEC	
	Inshore lizardfish		2	2	2	2	2	2	2	2	2	2	2	-	-	-	-	JAN-DEC	
	Lane snapper							1	2	2	2	1	1	-	-	-	-	JUL-DEC	
	Least puffer		2	2	2	2	2	2	2	2	2	2	2	-	-	-	-	JAN-DEC	
	Little tunny							1	1	1	1			-	-	-	-	MAY-SEP	
	Longnose anchovy		2	2	2	2	2	2	2	2	2	2	2	-	-	-	-	FEB-NOV	
	Pigfish		1					1	1	1	1	1	1	-	-	-	-	MAY-JAN	
	Pinfish		3	3	3	3	4	4	4	4	4	3	3	NOV-MAR	NO				

Alabama: ESIMAP 25 (cont.)

BIOLOGICAL RESOURCES: (cont.)

FISH: (cont.)

RAR#	Species	S F Conc.	J	F	M	A	M	J	J	A	S	O	N	D	Spawning	Eggs	Larvae	Juveniles	Adults
138	Spotfin mojarra		2	2	2	2	2	2	2	2	2	2	2	2	-	-	-	-	JAN-DEC
	Spotted seatrout		3	3	3	3	3	3	3	3	3	3	3	3	MAR-SEP	MAR-SEP	MAR-OCT	JAN-DEC	JAN-DEC
	Striped anchovy		2	2	2	2	2	2	2	2	2	2	2	2	-	-	-	-	JAN-DEC
	Striped mullet		4	4	4	4	4	4	4	4	4	4	4	4	NOV-MAY	NOV-MAY	NOV-MAY	JAN-DEC	JAN-DEC
	Threadfin shad		2	2	2	2	2	2	2	2	2	2	2	2	-	-	-	-	JAN-DEC
	White mullet		1	1	1	2	2	2	2	2	1	1	1	1	-	-	-	-	JAN-DEC
139	Atlantic bumper						3	3	3	3	2	2	2	2	-	-	-	-	JUN-DEC
	Atlantic thread herring			2	2	2	2	2	2	2	2	2	1	1	-	-	-	-	MAR-NOV
	Black drum		2	2	2	2	2	2	2	2	2	2	2	2	FEB-APR	FEB-APR	FEB-APR	JAN-DEC	JAN-DEC
	Bluefish			2	2	2	2	2	2	2	2	2	2	2	APR-OCT	-	-	-	APR-OCT
	Gulf butterfish		1	1	1	1	1	1	1	1	1	1	1	1	-	-	-	-	JAN-DEC
	Gulf sturgeon	P T	X	X	X	X	X	X	X	X	X	X	X	X	-	-	-	-	JAN-DEC
	Harvestfish		1	1		2	2	2	2	2	2	2	2	2	-	-	-	-	MAY-FEB
	King mackerel				1	2	2	2	2	2	2	1	1	1	-	-	-	-	MAY-NOV
	Ladyfish			1	1	1	1	1	1	1	1	1	1	1	-	-	-	-	MAR-NOV
	Lined seahorse		1	1	1	1	1	1	1	1	1	1	1	1	-	-	-	-	JAN-DEC
	Scaled sardine			2	2	2	2	2	2	2	2	2	2	2	-	-	-	-	APR-NOV
	Silver seatrout		1		1	1	1	1	1	1	1	1	1	1	-	-	-	-	FEB-FEB
																			MAY-DEC
	Spanish mackerel		1	1	1	3	3	3	3	3	3	1	1	1	JUN-SEP	JUN-SEP	JUN-SEP	APR-SEP	JAN-DEC
140	Gulf kingfish		2	2	2	2	2	2	2	2	2	2	2	2	-	-	-	-	MAR-JAN
	Halfbeak			1	1	2	2	2	1	1					-	-	-	-	APR-OCT
	Inland silverside		3	3	3	3	3	3	3	3	3	3	3	3	MAR-AUG	MAR-AUG	MAR-SEP	JAN-DEC	JAN-DEC
	Longnose killifish		2	2	2	2	2	2	2	2	2	2	2	2	-	-	-	-	JAN-DEC
	Northern kingfish			1	1	2	2	2	1	1	1	1	1	1	-	-	-	-	MAR-DEC
	Rough silverside		1	1	1	1	1	1	1	1	1	1	1	1	-	-	-	-	JAN-DEC
	Sheepshead minnow		3	3	3	3	3	3	3	3	3	3	3	3	APR-OCT	APR-OCT	APR-NOV	DEC-MAR	JAN-DEC

HABITAT:

RAR#	Species	S F Conc.	J	F	M	A	M	J	J	A	S	O	N	D
155	Rush false-asphodel		X	X	X	X	X	X	X	X	X	X	X	X
156	Bluethreads		X	X	X	X	X	X	X	X	X	X	X	X
	Crenate milkwort		X	X	X	X	X	X	X	X	X	X	X	X
	Rush false-asphodel		X	X	X	X	X	X	X	X	X	X	X	X
	Twig rush		X	X	X	X	X	X	X	X	X	X	X	X
157	Large-leaved jointweed		X	X	X	X	X	X	X	X	X	X	X	X
	Slenderleaf clammy-weed		X	X	X	X	X	X	X	X	X	X	X	X
160	Large-leaved jointweed		X	X	X	X	X	X	X	X	X	X	X	X
182	Southern three-awned grass		X	X	X	X	X	X	X	X	X	X	X	X
208	Bandana-of-the-everglades		X	X	X	X	X	X	X	X	X	X	X	X
	Godfrey's golden-aster		X	X	X	X	X	X	X	X	X	X	X	X
	Large-leaved jointweed		X	X	X	X	X	X	X	X	X	X	X	X
	Spoon-flower		X	X	X	X	X	X	X	X	X	X	X	X
211	Chapman's butterwort		X	X	X	X	X	X	X	X	X	X	X	X

INVERTEBRATE:

RAR#	Species	S F Conc.	J	F	M	A	M	J	J	A	S	O	N	D	Spawning	Eggs	Larvae	Juveniles	Adults
74	Atlantic brief squid		2	2	2	2	2	2	2	2	2	2	2	2	-	-	-	-	JAN-DEC
	Blue crab		3	3	3	3	3	3	3	3	3	3	3	3	MAR-NOV	MAR-NOV	JAN-DEC	JAN-DEC	JAN-DEC
	Brown shrimp		1	1	3	3	4	4	4	4	4	4	2	2	-	-	FEB-NOV	JAN-NOV	JUL-SEP
	Flatclaw hermit		2	2	2	2			2	2	2	2	2	2	-	-	-	-	AUG-APR
	Pink shrimp		2	2	2	2	2	2	2	2	2	2	2	2	-	-	-	JAN-DEC	JAN-DEC
	White shrimp		2	2	2	2	2	2	2	2	2	2	2	2	-	-	-	JAN-DEC	JAN-JUN
84	Five-slotted sand dollar		1	1	2	2	2	2	2	1	1				-	-	-	-	JAN-SEP
	Grass shrimp		3	3	3	3	3	3	3	3	3	3	2	2	-	-	-	JAN-DEC	JAN-DEC
	Lined sea star		2	2	2	2	2	2	2	2	2	2	2	2	-	-	-	-	JAN-DEC
	Thin-striped hermit		2	2	2	2	2	2	2	2	2	2	2	2	-	-	-	-	JAN-DEC
105	Atlantic brief squid		2	2	2	2	2	2	2	2	2	2	2	2	-	-	-	-	JAN-DEC
	Blue crab		4	4	4	4	4	4	4	4	4	4	4	4	MAR-NOV	MAR-NOV	JAN-DEC	JAN-DEC	JAN-DEC
138	Atlantic brief squid		2	2	2	2	2	2	2	2	2	2	2	2	-	-	-	-	JAN-DEC
	Blue crab		4	4	3	4	4	4	4	4	4	4	4	4	MAR-NOV	MAR-NOV	MAR-DEC	JAN-DEC	JAN-DEC
	Brown shrimp		4	4	4	4	4	4	4	4	4	4	4	4	NOV-APR	NOV-APR	FEB-NOV	JAN-DEC	JAN-DEC
	Mantis shrimp		2	2	2	2	2	2	2	2	2	2	2	2	-	-	-	-	JAN-DEC
	Pink shrimp		1	1	2	2	2	2	2	2	2	2	2	2	MAR-NOV	MAR-NOV	MAR-NOV	JAN-DEC	JAN-DEC
	Shark eye		1	1	1	1	1	1	1	1	1	1	1	1	-	-	-	-	-
	White shrimp		4	4	3	3	3	4	4	4	4	4	4	4	MAR-OCT	MAR-NOV	JAN-DEC	JAN-DEC	JAN-DEC
140	Five-slotted sand dollar		1				1	2	2	2	2				-	-	-	-	FEB-FEB
																			JUL-NOV
	Grass shrimp		3	3	3	3	3	3	3	3	3	3	3	2	-	-	-	JAN-DEC	JAN-DEC
	Thin-striped hermit		2	2	2	2	2	2	2	2	2	2	2	2	-	-	-	-	JAN-DEC

MARINE MAMMAL:

RAR#	Species	S F Conc.	J	F	M	A	M	J	J	A	S	O	N	D	Mating	Calving	Pupping	Molting
1	Bottlenose dolphin		X	X	X	X	X	X	X	X	X	X	X	X	MAR-SEP	MAR-SEP	-	-
	West Indian manatee	E VERY LOW		X	X	X	X	X	X	X					-	-	-	-
27	West Indian manatee	E	X	X	X	X	X	X	X	X					-	-	-	-

REPTILE:

RAR#	Species	S F Conc.	J	F	M	A	M	J	J	A	S	O	N	D	Nesting	Hatching	Interesting	Juveniles	Adults
25	Gopher tortoise	P	X	X	X	X	X	X	X	X	X	X	X	X	-	-	-	-	JAN-DEC
68	Alabama red-bellied turtle	P E	X	X	X	X	X	X	X	X	X	X	X	X	APR-AUG	-	-	JAN-DEC	JAN-DEC
	Alligator snapping turtle	P	X	X	X	X	X	X	X	X	X	X	X	X	APR-MAY	-	-	JAN-DEC	JAN-DEC
117	Green sea turtle	P T	X	X	X	X	X	X	X	X					APR-SEP	-	-	MAR-NOV	APR-SEP
	Kemp's ridley sea turtle	P E	X	X	X	X	X	X	X	X					APR-SEP	-	-	MAR-NOV	APR-SEP
	Loggerhead sea turtle	P T	X	X	X	X	X	X	X	X					APR-SEP	-	-	MAR-NOV	APR-SEP
151	Green sea turtle	P T	X	X	X	X	X	X	X	X					-	-	-	MAR-NOV	APR-SEP
	Kemp's ridley sea turtle	P E	X	X	X	X	X	X	X	X					-	-	-	MAR-NOV	APR-SEP
	Leatherback sea turtle	P E	X	X	X	X	X	X	X	X					-	-	-	MAR-NOV	-
	Loggerhead sea turtle	P T	X	X	X	X	X	X	X	X					-	-	-	MAR-NOV	APR-SEP

TERRESTRIAL MAMMAL:

RAR#	Species	S F Conc.	J	F	M	A	M	J	J	A	S	O	N	D
131	Alabama beach mouse	P E	X	X	X	X	X	X	X	X	X	X	X	X

HUMAN USE RESOURCES:

AIRPORT:

HUN#	Name	Contact	Phone
5	JACK EDWARDS AIRPORT		

Biological information shown on the maps represents known concentration areas or occurrences, but does not necessarily represent the full distribution or range of each species. This is particularly important to recognize when considering potential impacts to protected species.

Alabama: ESIMAP 25 (cont.)

HUMAN USE RESOURCES: (cont.)

BOAT RAMP:

HUN#	Name	Contact	Phone
10	BOAT RAMP		

CRITICAL HABITAT:

HUN#	Name	Contact	Phone
18	ALABAMA BEACH MOUSE CRITICAL HABITAT	USFWS	

MARINA:

HUN#	Name	Contact	Phone
66	SAFE HARBOUR		
67	SAILBOAT BAY		

PARK:

HUN#	Name	Contact	Phone
77	GULF STATE PARK	CARL FERRARO; ADCNR-SLD	251/929-0900

WILDLIFE REFUGE:

HUN#	Name	Contact	Phone
80	BON SECOUR NATIONAL WILDLIFE REFUGE	USFWS	251/540-7720