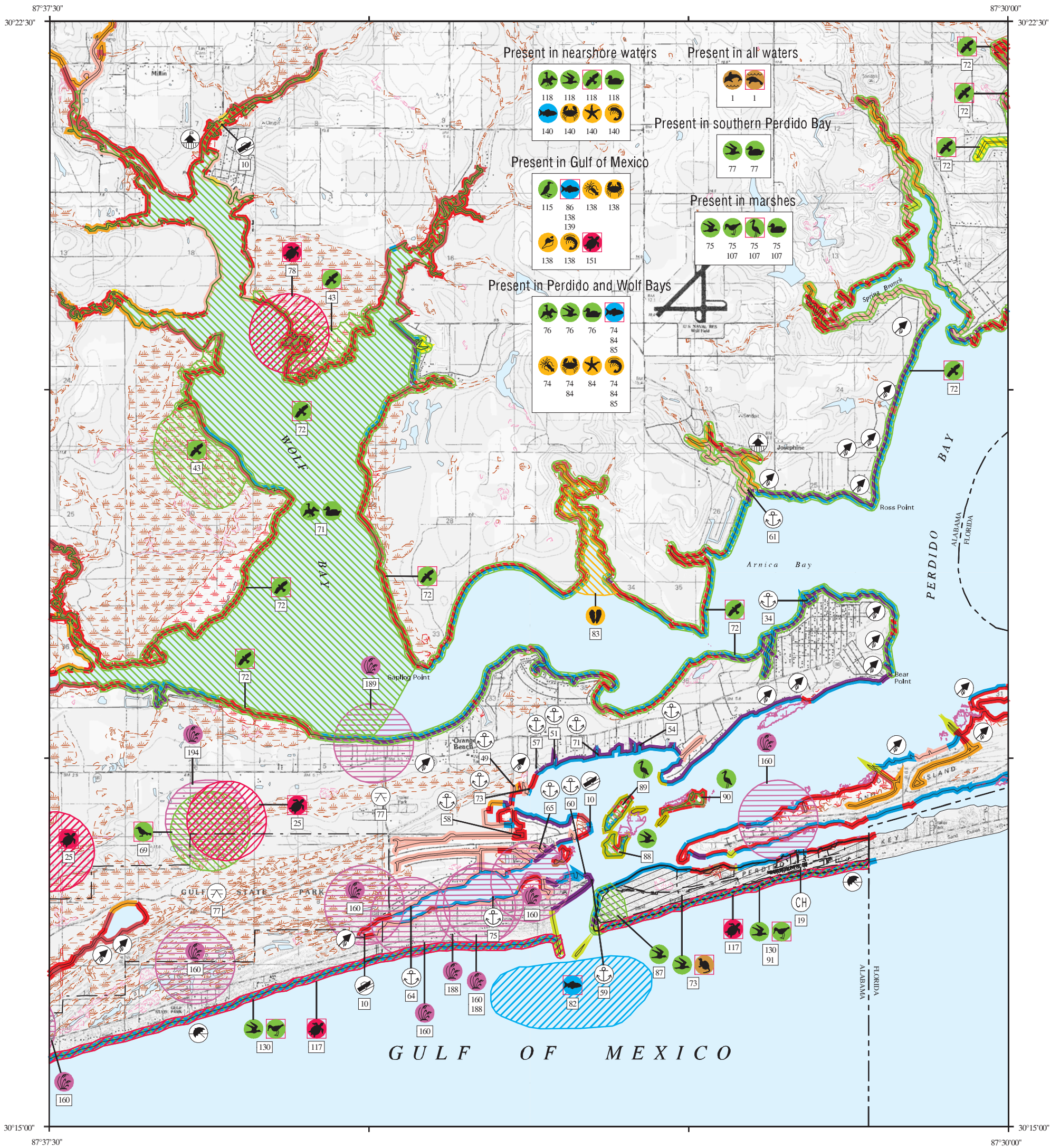


# ENVIRONMENTAL SENSITIVITY INDEX MAP



## SHORELINE HABITATS (ESI)

- 1B EXPOSED, SOLID MAN-MADE STRUCTURES
- 2A EXPOSED WAVE-CUT PLATFORMS IN MUD OR CLAY
- 2B EXPOSED SCARPS AND STEEP SLOPES IN CLAY
- 3A FINE-TO MEDIUM-GRAINED SAND BEACHES
- 3B SCARPS AND STEEP SLOPES IN SAND
- 4 COARSE-GRAINED SAND BEACHES
- 5 MIXED SAND AND GRAVEL BEACHES
- 6B RIPRAP
- 7 EXPOSED TIDAL FLATS
- 8A SHELTERED SCARPS IN MUD OR CLAY
- 8B SHELTERED, SOLID MAN-MADE STRUCTURES
- 8C SHELTERED RIPRAP
- 9A SHELTERED TIDAL FLATS
- 9B SHELTERED, VEGETATED LOW BANKS
- 10A SALT-AND BRACKISH-WATER MARSHES
- 10B FRESHWATER MARSHES
- 10C SWAMPS
- 10D SCRUB-SHRUB WETLANDS

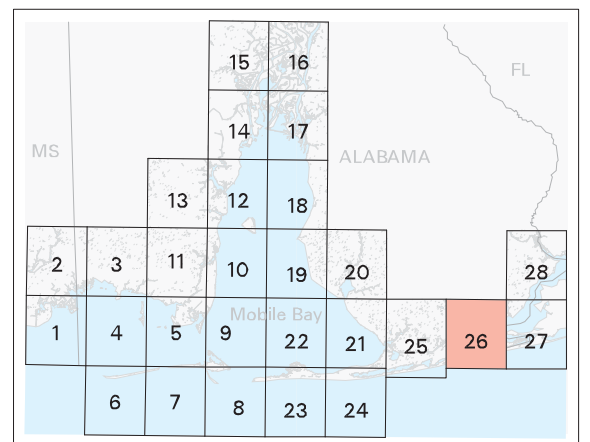


SCALE 1:50000



Not For Navigation  
Published: August 2007

Published at Seattle, Washington  
National Oceanic and Atmospheric Administration  
National Ocean Service  
Office of Response and Restoration  
Emergency Response Division





Alabama: ESIMAP 26

BIOLOGICAL RESOURCES:

BIRD:

RAR#	Species	S F Conc.	J	F	M	A	M	J	J	A	S	O	N	D	Nesting	Migrating	Molting
43	Bald eagle	P T	X	X	X	X	X	X	X	X	X	X	X	X	DEC-MAY	-	-
69	Red-cockaded woodpecker	P E	X	X	X	X	X	X	X	X	X	X	X	X	APR-JUN	-	-
71	Common goldeneye		X	X	X	X					X	X	X		-	-	-
	Pied-billed grebe		X	X	X						X	X	X		-	-	-
72	Osprey	P HIGH	X	X	X	X	X	X	X	X	X	X	X	X	MAY-JUL	-	-
73	Common tern				X	X	X	X	X						-	-	-
75	American bittern		X	X	X								X		-	-	-
	American coot		X	X	X	X					X	X	X		-	-	-
	American wigeon		X	X	X	X					X	X	X		-	-	-
	Canada goose		X	X	X	X	X	X	X	X	X	X	X	X	MAR-JUL	-	-
	Caspian tern		X	X	X	X	X	X	X	X	X	X	X	X	-	-	-
	Common moorhen		X	X	X	X	X	X	X	X	X	X	X	X	MAY-JUL	-	-
	Gadwall		X	X	X	X					X	X	X		-	-	-
	Greater yellowlegs				X	X	X	X	X	X	X	X	X		-	-	-
	Green-backed heron		X	X	X	X	X	X	X	X	X	X	X	X	MAY-JUL	-	-
	King rail		X	X	X	X	X	X	X	X	X	X	X	X	-	-	-
	Least bittern				X	X	X	X	X	X	X	X	X		-	-	-
	Mallard		X	X	X	X	X	X	X	X	X	X	X	X	APR-JUL	-	-
	Mottled duck		X	X	X	X	X	X	X	X	X	X	X	X	-	-	-
	Reddish egret	P			X	X	X	X	X						-	-	-
	Snow goose		X	X	X							X	X		-	-	-
	Sora		X	X	X	X				X	X	X	X		-	-	-
	Spotted sandpiper		X	X	X	X				X	X	X	X		-	-	-
	Virginia rail		X	X	X						X	X			-	-	-
	White ibis				X	X	X	X							-	-	-
	Wilson's snipe		X	X	X						X	X	X		-	-	-
	Wood duck		X	X	X	X	X	X	X	X	X	X	X	X	FEB-JUL	-	-
76	American coot		X	X	X	X					X	X	X		-	-	-
	Brown pelican		X	X	X	X	X	X	X	X	X	X	X	X	-	-	-
	Bufflehead		X	X	X							X	X		-	-	-
	Canvasback		X	X	X							X	X		-	-	-
	Double-crested cormorant		X	X	X						X	X	X		-	-	-
	Forster's tern		X	X	X	X						X	X		-	-	-
	Greater scaup		X	X	X							X	X		-	-	-
	Hooded merganser		X	X	X	X						X	X		-	-	-
	Horned grebe		X	X	X	X						X	X		-	-	-
	Laughing gull		X	X	X	X	X	X	X	X	X	X	X	X	-	-	-
	Lesser scaup		X	X	X							X	X		-	-	-
	Red-breasted merganser		X	X	X							X	X		-	-	-
	Redhead		X	X	X							X	X		-	-	-
	Ring-billed gull		X	X	X	X	X	X	X	X	X	X	X	X	-	-	-
	Royal tern		X	X	X	X	X	X	X	X	X	X	X	X	-	-	-
77	Bonaparte's gull		X	X	X	X						X	X		-	-	-
	Herring gull		X	X	X	X	X	X	X	X	X	X	X	X	-	-	-
	Ruddy duck		X	X	X							X	X		-	-	-
87	Black skimmer		X	X	X	X	X	X	X	X	X	X	X	X	MAY-JUL	-	-
88	Least tern	25-50 PAIRS			X	X	X	X	X						MAY-JUL	-	-
89	Great blue heron	12 PAIRS	X	X	X	X	X	X	X	X	X	X	X	X	FEB-MAY	-	-
	Snowy egret	15 PAIRS	X	X	X	X	X	X	X	X	X	X	X	X	APR-JUN	-	-
	Tricolored heron	15 PAIRS	X	X	X	X	X	X	X	X	X	X	X	X	MAY-JUN	-	-
90	Cattle egret	25 PAIRS			X	X	X	X	X	X					MAY-JUN	-	-
	Snowy egret	25 PAIRS	X	X	X	X	X	X	X	X	X	X	X	X	APR-JUN	-	-
91	Least tern	HIGH	X	X	X						X	X	X		-	-	-
	Snowy plover	P	X	X	X							X	X		-	-	-
107	Black-crowned night-heron				X	X	X	X	X	X	X	X	X	X	APR-JUN	-	-
	Blue-winged teal				X	X					X				-	-	-
	Cattle egret				X	X	X	X	X	X					MAY-JUN	-	-
	Clapper rail		X	X	X	X	X	X	X	X	X	X	X	X	MAY-AUG	-	-
	Great blue heron		X	X	X	X	X	X	X	X	X	X	X	X	FEB-JUL	-	-
	Great egret		X	X	X	X	X	X	X	X	X	X	X	X	MAR-JUN	-	-
	Green-winged teal		X	X	X							X	X		-	-	-
	Killdeer		X	X	X	X	X	X	X	X	X	X	X	X	APR-AUG	-	-
	Little blue heron		X	X	X	X	X	X	X	X	X	X	X	X	MAR-JUL	-	-
	Purple gallinule				X	X	X	X							MAY-JUL	-	-
	Snowy egret		X	X	X	X	X	X	X	X	X	X	X	X	APR-JUN	-	-
	Tricolored heron		X	X	X	X	X	X	X	X	X	X	X	X	MAY-JUN	-	-
	Willet		X	X	X	X	X	X	X	X	X	X	X	X	MAY-AUG	-	-
	Yellow-crowned night-heron		X	X	X	X	X	X	X	X	X	X	X	X	APR-JUL	-	-
115	Magnificent frigatebird				X	X	X	X	X	X					-	-	-
	Northern gannet	COMMON	X	X	X	X					X	X	X		-	-	-
118	Bonaparte's gull		X	X	X	X						X	X		-	-	-
	Brown pelican		X	X	X	X	X	X	X	X	X	X	X	X	-	-	-
	Common loon		X	X	X	X					X	X	X		-	-	-
	Double-crested cormorant		X	X	X							X	X	X	-	-	-
	Herring gull		X	X	X	X	X	X	X	X	X	X	X	X	-	-	-
	Laughing gull		X	X	X	X	X	X	X	X	X	X	X	X	-	-	-
	Osprey	P	X	X	X	X	X	X	X	X	X	X	X	X	-	-	-
	Red-breasted merganser		X	X	X							X	X		-	-	-
	Ring-billed gull		X	X	X	X	X	X	X	X	X	X	X	X	-	-	-
	Royal tern		X	X	X	X	X	X	X	X	X	X	X	X	-	-	-
	Surf scoter		X	X								X	X		-	-	-
	White-winged scoter		X	X								X	X		-	-	-
130	American oystercatcher	P	X	X	X	X	X	X	X	X	X	X	X	X	-	-	-
	Black tern		X	X	X							X	X		-	-	-
	Black-bellied plover		X	X	X	X						X	X		-	-	-
	Dunlin		X	X	X							X	X		-	-	-
	Greater yellowlegs		X	X	X							X	X		-	-	-
	Least sandpiper		X	X	X	X						X	X		-	-	-
	Lesser yellowlegs		X	X	X	X						X	X	X	-	-	-
	Red knot		X	X	X							X			-	-	-
	Ruddy turnstone		X	X	X							X			-	-	-
	Sanderling		X	X	X	X					X	X	X		-	-	-
	Semipalmated plover		X	X	X							X	X		-	-	-
	Semipalmated sandpiper		X	X	X							X	X		-	-	-
	Short-billed dowitcher		X	X	X	X						X	X		-	-	-
	Spotted sandpiper		X	X	X	X					X	X	X	X	-	-	-
	Western sandpiper		X	X	X	X	X	X	X	X	X	X	X	X	-	-	-
	Whimbrel		X	X	X	X	X	X	X	X	X	X	X	X	-	-	-
	Willet		X	X	X	X	X	X	X	X	X	X	X	X	-	-	-

FISH:

RAR#	Species	S F Conc.	J	F	M	A	M	J	J	A	S	O	N	D	Spawning	Eggs	Larvae	Juveniles	Adults
74	Atlantic croaker		2	4	4	4	4	4	3	3	3	2	2	2	-	-	AUG-APR	JAN-DEC	MAY-DEC
	Atlantic stingray		2	2	2	2	2	2	2	2	2	2	2	2	-	-	-	-	JAN-DEC
	Bay anchovy		3	3	4	4	4	4	3	3	4	4	3	2	FEB-SEP	FEB-OCT	FEB-DEC	JAN-DEC	JAN-DEC
	Bay whiff		2	2	2	3	3	3	2	2	2	2	2	2	-	DEC-APR	-	JAN-DEC	-
	Bighead searobin		2	2	2	2	2	2	2	2	2	2	2	2	-	-	-	-	JAN-DEC
	Blackcheek tonguefish		2	2	2	2	2	2	2	2	2	2	2	2	-	-	-	-	JAN-DEC

Biological information shown on the maps represents known concentration areas or occurrences, but does not necessarily represent the full distribution or range of each species. This is particularly important to recognize when considering potential impacts to protected species.

Alabama: ESIMAP 26 (cont.)

BIOLOGICAL RESOURCES: (cont.)

FISH: (cont.)

RAR#	Species	S F Conc.	J	F	M	A	M	J	J	A	S	O	N	D	Spawning	Eggs	Larvae	Juveniles	Adults
74	Bluegill		2	2	2	2	2	2	2	2	2	2	2	2	-	-	-	-	JAN-DEC
	Crevalle jack									2	2	2	2	2	-	-	-	-	JUN-NOV
	Darter goby		2	2	2	2	2	2	2	2	2	2	2	2	-	-	-	-	JAN-DEC
	Fringed flounder		2	2	2	2	2	2	2	2	2	2	2	2	-	-	-	-	JAN-DEC
	Gafftopsail catfish					1	2	2	2	2	2	2	2	2	-	-	-	-	MAY-OCT
	Gray snapper									1	1	1	1	1	-	-	-	-	AUG-DEC
	Gulf killifish		2	1	1	1	1	1	1	1	1	1	1	1	-	-	-	-	JAN-DEC
	Gulf menhaden		2	2	2	3	3	3	3	2	2	2	2	2	-	SEP-MAR	OCT-MAY	JAN-DEC	JAN-DEC
	Gulf sturgeon	P T	X	X	X	X	X	X	X	X	X	X	X	X	-	-	-	-	JAN-DEC
	Hardhead catfish		3	3	3	3	3	3	3	3	3	3	3	3	MAY-AUG	MAY-AUG	MAY-SEP	JAN-DEC	JAN-DEC
	Inshore lizardfish		1	1	1	2	2	2	2	2	2	2	2	2	-	-	-	-	JAN-DEC
	Largemouth bass					1	1	1	1	1	1	1	1	1	-	-	-	-	APR-NOV
	Least puffer		1	1	1	2	2	2	2	1	1	2	2	1	-	-	-	-	JAN-DEC
	Longnose gar		1	1	1	2	2	2	2	1	2	2	1	1	-	-	-	-	MAY-MAY
															-	-	-	-	AUG-SEP
	Pinfish		2	2	2	3	3	3	3	3	3	3	2	2	-	-	DEC-APR	JAN-DEC	JAN-DEC
	Red drum		2	2	2	2	2	2	2	2	2	2	2	2	SEP-NOV	SEP-NOV	SEP-NOV	JAN-DEC	JAN-DEC
	Redear sunfish		1					1					1	1	-	-	-	-	JUL-JUL
															-	-	-	-	NOV-JAN
	Sand seatrout		2	2	2	2	2	2	2	2	2	2	2	2	MAR-AUG	MAR-OCT	MAR-OCT	JAN-DEC	JAN-DEC
	Silver perch		2	2	2	2	2	2	2	2	2	2	2	2	-	APR-JUL	APR-AUG	APR-JUL	FEB-DEC
	Southern flounder		2	2	2	2	2	2	2	2	2	2	2	2	-	-	NOV-MAR	JAN-DEC	JAN-DEC
	Spotfin mojarra		2	1	1	1	1	3	3	3	3	3	3	3	-	-	-	-	JAN-DEC
	Spotted seatrout		2	2	2	2	2	2	2	2	2	2	2	2	APR-SEP	APR-SEP	APR-OCT	JAN-DEC	JAN-DEC
	Striped anchovy		2	2	2	2	2	2	2	2	2	2	2	2	-	-	-	-	JAN-DEC
	Striped mullet		3	3	3	3	3	3	3	3	3	3	3	3	-	-	NOV-MAR	JAN-DEC	MAY-DEC
	Threadfin shad		1	1	1	1	1	1	1	1	1	1	1	1	-	-	-	-	JAN-DEC
	White mullet					1	1	1	1	1	1	1	1	1	-	-	-	-	MAR-MAR
															-	-	-	-	JUN-JUN
82	Gulf sturgeon	P T HIGH	X	X	X	X	X						X	-	-	-	-	DEC-MAY	
84	Inland silverside		3	3	3	3	3	3	3	3	3	3	3	3	MAR-SEP	MAR-SEP	MAR-OCT	JAN-DEC	JAN-DEC
	Longnose killifish		1					1							-	-	-	-	FEB-FEB
															-	-	-	-	JUL-JUL
	Marsh killifish		1	1	1	1			1	1			1		-	-	-	-	JUL-AUG
															-	-	-	-	DEC-APR
	Rainwater killifish		1	1	1	1	1	1					1	1	-	-	-	-	NOV-JUN
	Rough silverside								2	2	1				-	-	-	-	JUN-AUG
	Sailfin molly		2	2	1	1	1	1	1	1	1	1	2		-	-	-	-	SEP-JUL
	Sheepshead minnow		2	2	2	2	2	2	2	2	2	2	2	2	APR-OCT	APR-OCT	APR-NOV	JAN-DEC	JAN-DEC
85	Atlantic bumper					1	1	2	2	1	1				-	-	-	-	MAY-OCT
	Atlantic spadefish					1	1	1	1	1	1				-	-	-	-	JUN-OCT
	Black drum		2	2	2	2	2	2	2	2	2	2	2	2	-	-	FEB-APR	JAN-DEC	JAN-DEC
	Bluefish					2	2	2	2	2	2	2	2	2	-	-	-	MAR-OCT	MAR-DEC
	Florida pompano								2	2	2	2			-	-	-	-	JUN-SEP
	Gulf butterfish		2	2	2	2	2	2	2	1	1	2	2	2	-	-	-	-	JAN-DEC
	Gulf flounder		2	2	2	2	2	2	2	2	2	2	2	2	-	-	-	-	FEB-OCT
	Harvestfish					2	2	2	2	2	2	2	2	2	-	-	-	-	MAY-OCT
	Ladyfish		1	1	1	1	1	1					1	1	-	-	-	-	FEB-JUN
															-	-	-	-	NOV-DEC
	Lane snapper								1	1	1				-	-	-	-	JUL-SEP
	Sheepshead		2	2	3	3	3	2	2	2	2	2	2	2	-	-	MAR-JUL	JAN-DEC	JAN-DEC
	Southern hake		1	2	2	2	1						1		-	-	-	-	DEC-MAY
	Spotted hake		1	1	1	1							1		-	-	-	-	DEC-APR
86	Atlantic cutlassfish					2	2	2					2	2	-	-	-	-	MAR-MAR
															-	-	-	-	MAY-DEC
	Dwarf sand perch		1	1	1	1	1	1	1	1	1	1	2	2	-	-	-	-	JAN-DEC
	Great barracuda												1		-	-	-	-	SEP-SEP
	Leopard searobin		2	2	2	2	2	2	2	2	2	2	2	2	-	-	-	-	JAN-DEC
	Ocellated flounder		2	2	2	2	2	2	2	2	2	2	2	2	-	-	-	-	FEB-DEC
	Rock sea bass		1	1	1	1	1	1	1	1	1	1	1	1	-	-	-	-	JAN-DEC
	Rough scad					1	1	1							-	-	-	-	MAR-MAR
															-	-	-	-	MAY-JUN
	Shelf flounder		1	1	2	2	2	2	2	2	2	1	1	1	-	-	-	-	JAN-NOV
	Speckled worm eel		1	1	1	1	1	1	1	1	1	1	1	1	-	-	-	-	OCT-APR
	Striped burrfish		2	2	2	2	2	2	2	2	2	2	2	2	-	-	-	-	JAN-DEC
138	Atlantic croaker		4	4	4	4	4	4	3	3	3	3	3	3	SEP-APR	SEP-APR	OCT-APR	JAN-DEC	JAN-DEC
	Atlantic sharpnose shark					2	2	2	2	2	2	2	2	2	-	-	-	-	MAR-OCT
	Atlantic stingray		2	2	2	2	2	2	2	2	2	2	2	2	-	-	-	-	JAN-DEC
	Bay anchovy		4	4	4	4	4	4	4	4	4	4	4	4	FEB-SEP	FEB-NOV	FEB-DEC	JAN-DEC	JAN-DEC
	Bay whiff		3	3	3	3	3	3	3	3	3	3	3	3	-	-	-	-	JAN-DEC
	Bighead searobin		2	2	2	2	2	2	2	2	2	2	2	2	-	-	-	-	FEB-DEC
	Blacktip shark					2	2	2	2	2	2	2	2	2	-	-	-	-	MAR-OCT
	Blue runner									2	2				-	-	-	-	SEP-OCT
	Bonnethead shark												1		-	-	-	-	OCT-OCT
	Broad flounder		1	1	1	1	1	1	1	1	1	1	1	1	-	-	-	-	JAN-JUN
	Bull shark					2	2	2	2	2	2	2	2	2	-	-	-	-	MAR-OCT
	Cobia									1	1	1			-	-	-	-	JUL-SEP
	Crested cusk-eel		1	1	1	1	1	1	1	1	1	1	1	1	-	-	-	-	JAN-DEC
	Crevalle jack		2	2	2	2	2	2	2	2	2	2	2	2	JAN-DEC	MAY-SEP	MAY-SEP	JAN-DEC	MAY-SEP
	Darter goby		2	2	2	2	2	2	2	2	2	2	2	2	-	-	-	-	JAN-DEC
	Dolphin												2		-	-	-	-	SEP-SEP
	Florida pompano					2	2	2	2	2	2	2	2	2	APR-SEP	APR-SEP	APR-SEP	APR-OCT	APR-OCT
	Fringed flounder		2	2	2	2	2	2	2	2	2	2	2	2	-	-	-	-	JAN-DEC
	Gafftopsail catfish					1	2	2	2	2	2	2	2	2	-	-	-	-	JUN-OCT
	Gag					1									-	-	-	-	MAY-MAY
	Gray snapper					1	1	1	1	1	1	1	1	1	-	-	-	-	MAY-DEC
	Gulf flounder		2	2	2	2	2	2	2	2	2	2	2	2	NOV-FEB	NOV-FEB	NOV-FEB	JAN-DEC	JAN-DEC
	Gulf menhaden		4	4	4	4	4	4	4	4	4	4	4	4	OCT-MAR	OCT-MAR	OCT-MAY	JAN-DEC	JAN-DEC
	Hardhead catfish		2	2	2	4	4	4	4	4	4	4	4	2	APR-AUG	APR-AUG	APR-SEP	JAN-DEC	JAN-DEC
	Highfin goby		2	2	2	2	2	2	2	2	2	2	2	2	-	-	-	-	JAN-DEC
	Inshore lizardfish		2	2	2	2	2	2	2	2	2	2	2	2	-	-	-	-	JAN-DEC
	Lane snapper					1	2	2	2	1	1				-	-	-	-	JUL-DEC
	Least puffer		2	2	2	2	2	2	2	2	2	2	2	2	-	-	-	-	JAN-DEC
	Little tunny					1	1	1	1						-	-	-	-	MAY-SEP
	Longnose anchovy		2	2	2														

**Alabama: ESIMAP 26 (cont.)**

**BIOLOGICAL RESOURCES: (cont.)**

**FISH: (cont.)**

RAR#	Species	S F Conc.	J	F	M	A	M	J	J	A	S	O	N	D	Spawning	Eggs	Larvae	Juveniles	Adults
138	Spotted seatrout		3	3	3	3	3	3	3	3	3	3	3	3	MAR-SEP	MAR-SEP	MAR-OCT	JAN-DEC	JAN-DEC
	Striped anchovy		2	2	2	2	2	2	2	2	2	2	2	2	-	-	-	-	JAN-DEC
	Striped mullet		4	4	4	4	4	4	4	4	4	4	4	4	NOV-MAY	NOV-MAY	NOV-MAY	JAN-DEC	JAN-DEC
	Threadfin shad		2	2	2	2	2	2	2	2	2	2	2	2	-	-	-	-	JAN-DEC
	White mullet		1	1	1	2	2	2	2	2	1	1	1	1	-	-	-	-	JAN-DEC
139	Atlantic bumper							3	3	3	2	2	2	2	-	-	-	-	JUN-DEC
	Atlantic thread herring				2	2	2	2	2	2	2	1	1	1	-	-	-	-	MAR-NOV
	Black drum		2	2	2	2	2	2	2	2	2	2	2	2	FEB-APR	FEB-APR	FEB-APR	JAN-DEC	JAN-DEC
	Bluefish				2	2	2	2	2	2	2	2	2	2	APR-OCT	-	-	-	APR-OCT
	Gulf butterfish		1	1	1	1	1	1	1	1	1	1	1	1	-	-	-	-	JAN-DEC
	Gulf sturgeon	P T	X	X	X	X	X	X	X	X	X	X	X	X	-	-	-	-	JAN-DEC
	Harvestfish		1	1	2	2	2	2	2	2	2	2	2	2	-	-	-	-	MAY-FEB
	King mackerel				1	2	2	2	2	2	1	1	1	1	-	-	-	-	MAY-NOV
	Ladyfish				1	1	1	1	1	1	1	1	1	1	-	-	-	-	MAR-NOV
	Lined seahorse		1	1	1	1	1	1	1	1	1	1	1	1	-	-	-	-	JAN-DEC
	Scaled sardine				2	2	2	2	2	2	2	2	2	2	-	-	-	-	APR-NOV
	Silver seatrout		1	1	1	1	1	1	1	1	1	1	1	1	-	-	-	-	FEB-FEB MAY-DEC
	Spanish mackerel		1	1	3	3	3	3	3	3	1	1	1	1	JUN-SEP	JUN-SEP	JUN-SEP	APR-SEP	JAN-DEC
140	Gulf kingfish		2	2	2	2	2	2	2	2	2	2	2	2	-	-	-	-	MAR-JAN
	Halfbeak				1	1	2	2	1	1	1	1	1	1	-	-	-	-	APR-OCT
	Inland silverside		3	3	3	3	3	3	3	3	3	3	3	3	MAR-AUG	MAR-AUG	MAR-SEP	JAN-DEC	JAN-DEC
	Longnose killifish		2	2	2	2	2	2	2	2	2	2	2	2	-	-	-	-	JAN-DEC
	Northern kingfish				1	1	2	2	1	1	1	1	1	1	-	-	-	-	MAR-DEC
	Rough silverside		1	1	1	1	1	1	1	1	1	1	1	1	-	-	-	-	JAN-DEC
	Sheepshead minnow		3	3	3	3	3	3	3	3	3	3	3	3	APR-OCT	APR-OCT	APR-NOV	DEC-MAR	JAN-DEC

**HABITAT:**

RAR#	Species	S F Conc.	J	F	M	A	M	J	J	A	S	O	N	D
160	Large-leaved jointweed		X	X	X	X	X	X	X	X	X	X	X	X
188	Godfrey's golden-aster		X	X	X	X	X	X	X	X	X	X	X	X
189	Southeastern tickseed		X	X	X	X	X	X	X	X	X	X	X	X
194	Chapman's butterwort		X	X	X	X	X	X	X	X	X	X	X	X
	Spring sneezeweed		X	X	X	X	X	X	X	X	X	X	X	X

**INVERTEBRATE:**

RAR#	Species	S F Conc.	J	F	M	A	M	J	J	A	S	O	N	D	Spawning	Eggs	Larvae	Juveniles	Adults
74	Atlantic brief squid		2	2	2	2	2	2	2	2	2	2	2	2	-	-	-	-	JAN-DEC
	Blue crab		3	3	3	3	3	3	3	3	3	3	3	3	MAR-NOV	MAR-NOV	JAN-DEC	JAN-DEC	JAN-DEC
	Brown shrimp		1	1	3	3	4	4	4	4	4	4	4	2	-	-	FEB-NOV	JAN-NOV	JUL-SEP
	Flatclaw hermit		2	2	2	2	2	2	2	2	2	2	2	2	-	-	-	-	AUG-APR
	Pink shrimp		2	2	2	2	2	2	2	2	2	2	2	2	-	-	-	JAN-DEC	JAN-DEC
	White shrimp		2	2	2	2	2	2	2	2	2	2	2	2	-	-	-	JAN-DEC	JAN-JUN
83	Eastern oyster		2	2	2	2	2	2	2	2	2	2	2	2	APR-NOV	-	APR-NOV	APR-NOV	-
84	Five-slotted sand dollar		1	1	2	2	2	2	1	1	1	1	1	1	-	-	-	-	JAN-SEP
	Grass shrimp		3	3	3	3	3	3	3	3	3	3	2	2	-	-	-	JAN-DEC	JAN-DEC
	Lined sea star		2	2	2	2	2	2	2	2	2	2	2	2	-	-	-	-	JAN-DEC
	Thinstripe hermit		2	2	2	2	2	2	2	2	2	2	2	2	-	-	-	-	JAN-DEC
85	Mantis shrimp				2	2	2	2	2	2	2	2	2	2	-	-	-	-	MAR-NOV
138	Atlantic brief squid		2	2	2	2	2	2	2	2	2	2	2	2	-	-	-	-	JAN-DEC
	Blue crab		4	4	3	4	4	4	4	4	4	4	4	4	MAR-NOV	MAR-NOV	MAR-DEC	JAN-DEC	JAN-DEC
	Brown shrimp		4	4	4	4	4	4	4	4	4	4	4	4	NOV-APR	NOV-APR	FEB-NOV	JAN-DEC	JAN-DEC
	Mantis shrimp		2	2	2	2	2	2	2	2	2	2	2	2	-	-	-	-	JAN-DEC
	Pink shrimp		1	1	2	2	2	2	2	2	2	2	2	2	MAR-NOV	MAR-NOV	MAR-NOV	JAN-DEC	JAN-DEC
	Shark eye		1	1	1	1	1	1	1	1	1	1	1	1	-	-	-	-	-
	White shrimp		4	4	3	3	3	4	4	4	4	4	4	4	MAR-OCT	MAR-NOV	JAN-DEC	JAN-DEC	JAN-DEC
140	Five-slotted sand dollar				1	1	2	2	2	2	2	2	2	2	-	-	-	-	FEB-FEB JUL-NOV
	Grass shrimp		3	3	3	3	3	3	3	3	3	3	2	2	-	-	-	JAN-DEC	JAN-DEC
	Thinstripe hermit		2	2	2	2	2	2	2	2	2	2	2	2	-	-	-	-	JAN-DEC

**MARINE MAMMAL:**

RAR#	Species	S F Conc.	J	F	M	A	M	J	J	A	S	O	N	D	Mating	Calving	Pupping	Molting
1	Bottlenose dolphin		X	X	X	X	X	X	X	X	X	X	X	X	MAR-SEP	MAR-SEP	-	-
	West Indian manatee	E VERY LOW			X	X	X	X	X	X	X	X	X	X	-	-	-	-

**REPTILE:**

RAR#	Species	S F Conc.	J	F	M	A	M	J	J	A	S	O	N	D	Nesting	Hatching	Interesting	Juveniles	Adults
25	Gopher tortoise	P	X	X	X	X	X	X	X	X	X	X	X	X	-	-	-	-	JAN-DEC
78	Alligator snapping turtle	P	X	X	X	X	X	X	X	X	X	X	X	X	APR-MAY	-	-	JAN-DEC	JAN-DEC
117	Green sea turtle	P T	X	X	X	X	X	X	X	X	X	X	X	X	APR-SEP	-	-	MAR-NOV	APR-SEP
	Kemp's ridley sea turtle	P E	X	X	X	X	X	X	X	X	X	X	X	X	APR-SEP	-	-	MAR-NOV	APR-SEP
	Loggerhead sea turtle	P T	X	X	X	X	X	X	X	X	X	X	X	X	APR-SEP	-	-	MAR-NOV	APR-SEP
151	Green sea turtle	P T	X	X	X	X	X	X	X	X	X	X	X	X	-	-	-	MAR-NOV	APR-SEP
	Kemp's ridley sea turtle	P E	X	X	X	X	X	X	X	X	X	X	X	X	-	-	-	MAR-NOV	APR-SEP
	Leatherback sea turtle	P E	X	X	X	X	X	X	X	X	X	X	X	X	-	-	-	MAR-NOV	-
	Loggerhead sea turtle	P T	X	X	X	X	X	X	X	X	X	X	X	X	-	-	-	MAR-NOV	APR-SEP

**TERRESTRIAL MAMMAL:**

RAR#	Species	S F Conc.	J	F	M	A	M	J	J	A	S	O	N	D
73	Perdido Key beach mouse	P E	X	X	X	X	X	X	X	X	X	X	X	X

**HUMAN USE RESOURCES:**

**BOAT RAMP:**

HUN#	Name	Contact	Phone
10	BOAT RAMP		

**CRITICAL HABITAT:**

HUN#	Name	Contact	Phone
19	PERDIDO KEY BEACH MOUSE CRITICAL HABITAT	USFWS	

**MARINA:**

HUN#	Name	Contact	Phone
34	BEAR POINT MARINA		
49	GRIFFITH'S MARINA		
51	HUDSON MARINA		
54	MESS ABOUT MARINA		
57	ORANGE BEACH CHARTER BOAT BASIN		
58	ORANGE BEACH MARINA		

Biological information shown on the maps represents known concentration areas or occurrences, but does not necessarily represent the full distribution or range of each species. This is particularly important to recognize when considering potential impacts to protected species.

**Alabama: ESIMAP 26 (cont.)**

**HUMAN USE RESOURCES: (cont.)**

**MARINA: (cont.)**

<b>HUN#</b>	<b>Name</b>	<b>Contact</b>	<b>Phone</b>
59	OUTCAST CHARTER MARINA		
60	PERDIDO PASS MARINA		
61	PIRATE'S COVE MARINA		
64	ROMAR HARBOR HO-DRI MARINA		
65	SAFE HARBOR MARINA		
71	SPORTSMAN'S MARINA		
73	WALTER TRENT MARINA		
75	ZEKE'S MARINA		

**PARK:**

<b>HUN#</b>	<b>Name</b>	<b>Contact</b>	<b>Phone</b>
77	GULF STATE PARK	CARL FERRARO; ADCNR-SLD	251/929-0900