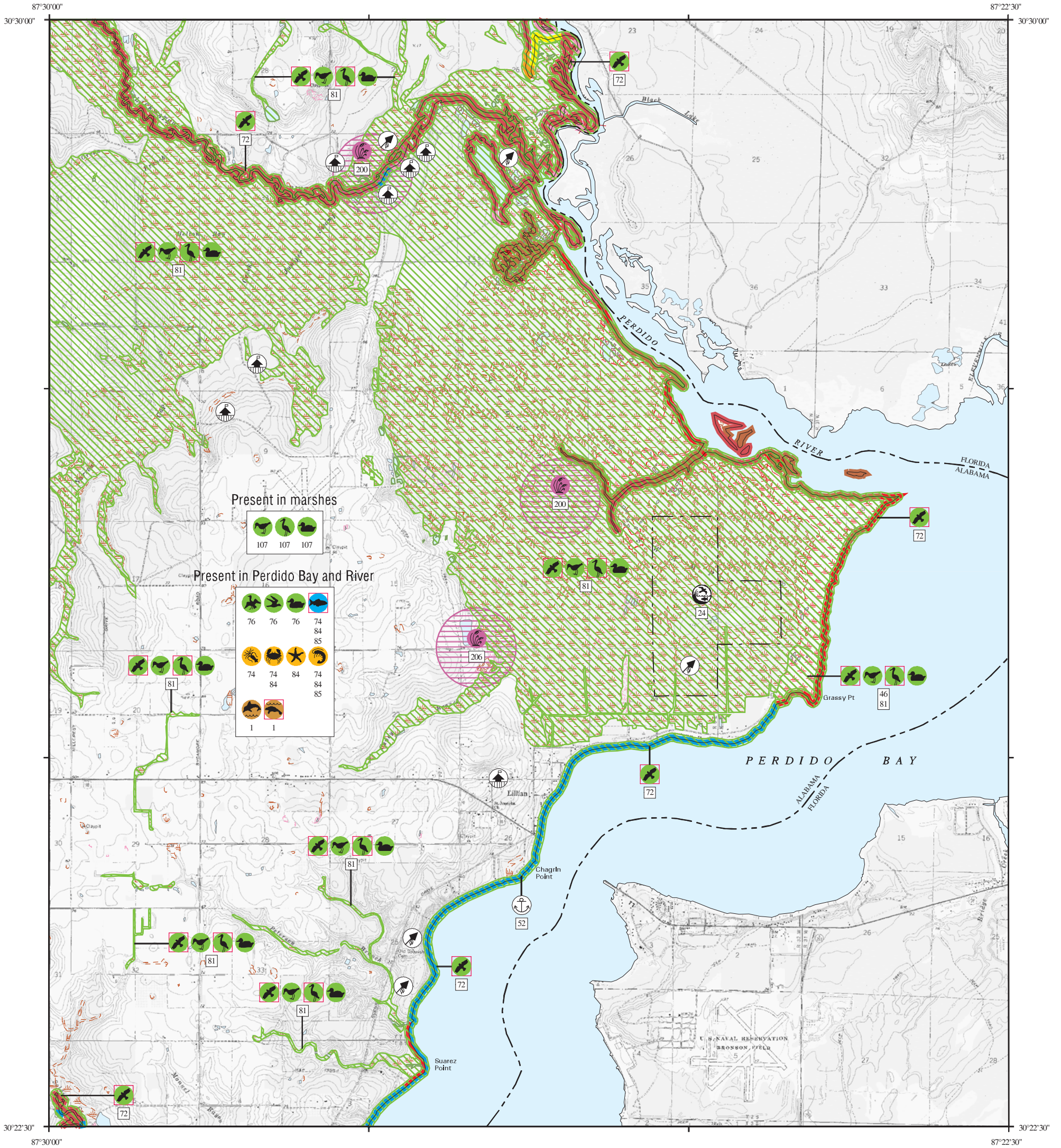


ENVIRONMENTAL SENSITIVITY INDEX MAP



SHORELINE HABITATS (ESI)

- 1B EXPOSED, SOLID MAN-MADE STRUCTURES
- 2A EXPOSED WAVE-CUT PLATFORMS IN MUD OR CLAY
- 2B EXPOSED SCARPS AND STEEP SLOPES IN CLAY
- 3A FINE-TO MEDIUM-GRAINED SAND BEACHES
- 3B SCARPS AND STEEP SLOPES IN SAND
- 4 COARSE-GRAINED SAND BEACHES
- 5 MIXED SAND AND GRAVEL BEACHES
- 6B RIPRAP
- 7 EXPOSED TIDAL FLATS
- 8A SHELTERED SCARPS IN MUD OR CLAY
- 8B SHELTERED, SOLID MAN-MADE STRUCTURES
- 8C SHELTERED RIPRAP
- 9A SHELTERED TIDAL FLATS
- 9B SHELTERED, VEGETATED LOW BANKS
- 10A SALT-AND BRACKISH-WATER MARSHES
- 10B FRESHWATER MARSHES
- 10C SWAMPS
- 10D SCRUB-SHRUB WETLANDS

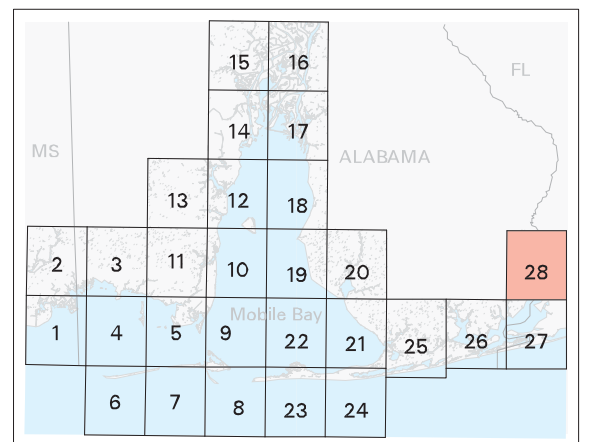


SCALE 1:50000



Not For Navigation
Published: August 2007

Published at Seattle, Washington
National Oceanic and Atmospheric Administration
National Ocean Service
Office of Response and Restoration
Emergency Response Division



Alabama: ESIMAP 28

BIOLOGICAL RESOURCES:

BIRD:

RAR#	Species	S F Conc.	J	F	M	A	M	J	J	A	S	O	N	D	Nesting	Migrating	Molting
46	Bald eagle	P T	X	X	X	X	X	X	X	X	X	X	X	X	DEC-MAY	-	-
72	Osprey	P HIGH	X	X	X	X	X	X	X	X	X	X	X	X	MAY-JUL	-	-
76	American coot		X	X	X	X					X	X	X		-	-	-
	Brown pelican		X	X	X	X	X	X	X	X	X	X	X		-	-	-
	Bufflehead		X	X	X							X	X		-	-	-
	Canvasback		X	X	X							X	X		-	-	-
	Double-crested cormorant		X	X	X					X	X	X	X		-	-	-
	Forster's tern		X	X	X	X						X	X		-	-	-
	Greater scaup		X	X	X							X	X		-	-	-
	Hooded merganser		X	X	X	X						X	X		-	-	-
	Horned grebe		X	X	X	X						X	X		-	-	-
	Laughing gull		X	X	X	X	X	X	X	X	X	X	X	X	-	-	-
	Lesser scaup		X	X	X							X	X		-	-	-
	Red-breasted merganser		X	X	X							X	X		-	-	-
	Redhead		X	X	X							X	X		-	-	-
	Ring-billed gull		X	X	X	X	X	X	X	X	X	X	X	X	-	-	-
	Royal tern		X	X	X	X	X	X	X	X	X	X	X	X	-	-	-
81	American bittern		X	X	X								X		-	-	-
	Common moorhen		X	X	X	X	X	X	X	X	X	X	X	X	MAY-JUL	-	-
	Greater yellowlegs		X	X	X	X						X	X		-	-	-
	King rail		X	X	X	X	X	X	X	X	X	X	X	X	-	-	-
	Least bittern		X	X	X	X	X	X	X	X	X	X	X		-	-	-
	Mottled duck		X	X	X	X	X	X	X	X	X	X	X	X	-	-	-
	Osprey	P	X	X	X	X	X	X	X	X	X	X	X	X	MAY-JUL	-	-
	Reddish egret	P	X	X	X	X	X	X	X						-	-	-
	Virginia rail		X	X	X							X	X		-	-	-
	Wading birds	HIGH	X	X	X	X	X	X	X	X	X	X	X	X	-	-	-
	White ibis		X	X	X	X									-	-	-
	Wood duck		X	X	X	X	X	X	X	X	X	X	X	X	FEB-JUL	-	-
	Wood stork	P E	X	X	X	X	X	X	X						-	-	-
107	Black-crowned night-heron		X	X	X	X	X	X	X	X	X	X	X	X	APR-JUN	-	-
	Blue-winged teal		X	X								X			-	-	-
	Cattle egret		X	X	X	X	X	X	X	X					MAY-JUN	-	-
	Clapper rail		X	X	X	X	X	X	X	X	X	X	X	X	MAY-AUG	-	-
	Great blue heron		X	X	X	X	X	X	X	X	X	X	X	X	FEB-JUL	-	-
	Great egret		X	X	X	X	X	X	X	X	X	X	X	X	MAR-JUN	-	-
	Green-winged teal		X	X	X							X	X		-	-	-
	Killdeer		X	X	X	X	X	X	X	X	X	X	X	X	APR-AUG	-	-
	Little blue heron		X	X	X	X	X	X	X	X	X	X	X	X	MAR-JUL	-	-
	Purple gallinule		X	X	X	X	X								MAY-JUL	-	-
	Snowy egret		X	X	X	X	X	X	X	X	X	X	X	X	APR-JUN	-	-
	Tricolored heron		X	X	X	X	X	X	X	X	X	X	X	X	MAY-JUN	-	-
	Willet		X	X	X	X	X	X	X	X	X	X	X	X	MAY-AUG	-	-
	Yellow-crowned night-heron		X	X	X	X	X	X	X	X	X	X	X	X	APR-JUL	-	-

FISH:

RAR#	Species	S F Conc.	J	F	M	A	M	J	J	A	S	O	N	D	Spawning	Eggs	Larvae	Juveniles	Adults
74	Atlantic croaker		2	4	4	4	4	4	3	3	3	2	2	2	-	-	AUG-APR	JAN-DEC	MAY-DEC
	Atlantic stingray		2	2	2	2	2	2	2	2	2	2	2	2	-	-	-	-	JAN-DEC
	Bay anchovy		3	3	3	4	4	4	4	3	3	4	4	3	FEB-SEP	FEB-OCT	FEB-DEC	JAN-DEC	JAN-DEC
	Bay whiff		2	2	2	2	3	3	3	2	2	2	2	2	-	DEC-APR	-	JAN-DEC	-
	Bighead searobin		2	2	2	2	2	2	2	2	2	2	2	2	-	-	-	-	JAN-DEC
	Blackcheek tonguefish		2	2	2	2	2	2	2	2	2	2	2	2	-	-	-	-	JAN-DEC
	Bluegill		2	2	2	2	2	2	2	2	2	2	2	2	-	-	-	-	JAN-DEC
	Crevalle jack							2	2	2	2	2	2	2	-	-	-	-	JUN-NOV
	Darter goby		2	2	2	2	2	2	2	2	2	2	2	2	-	-	-	-	JAN-DEC
	Fringed flounder		2	2	2	2	2	2	2	2	2	2	2	2	-	-	-	-	JAN-DEC
	Gafftopsail catfish						1	2	2	2	2				-	-	-	-	MAY-OCT
	Gray snapper								1	1	1	1	1	1	-	-	-	-	AUG-DEC
	Gulf killifish		2	1	1	1	1	1	1	1	1	1	1	1	-	-	-	-	JAN-DEC
	Gulf menhaden		2	2	2	3	3	3	3	2	2	2	2	2	-	SEP-MAR	OCT-MAY	JAN-DEC	JAN-DEC
	Gulf sturgeon	P T	X	X	X	X	X	X	X	X	X	X	X	X	-	-	-	-	JAN-DEC
	Hardhead catfish		3	3	3	3	3	3	3	3	3	3	3	3	MAY-AUG	MAY-AUG	MAY-SEP	JAN-DEC	JAN-DEC
	Inshore lizardfish		1	1	1	2	2	2	2	2	2	2	2	2	-	-	-	-	JAN-DEC
	Largemouth bass					1	1	1	1	1	1	1	1	1	-	-	-	-	APR-NOV
	Least puffer		1	1	1	2	2	2	2	1	1	2	2	1	-	-	-	-	JAN-DEC
	Longnose gar		1	1		1	2			2	2	1			-	-	-	-	MAY-MAY
																			AUG-SEP
	Pinfish		2	2	2	3	3	3	3	3	3	3	2	2	-	-	DEC-APR	JAN-DEC	JAN-DEC
	Red drum		2	2	2	2	2	2	2	2	2	2	2	2	SEP-NOV	SEP-NOV	SEP-NOV	JAN-DEC	JAN-DEC
	Redear sunfish		1											1	-	-	-	-	JUL-JUL
																			NOV-JAN
	Sand seatrout		2	2	2	2	2	2	2	2	2	2	2	2	MAR-AUG	MAR-OCT	MAR-OCT	JAN-DEC	JAN-DEC
	Silver perch		2	2	2	2	2	2	2	2	2	2	2	2	-	APR-JUL	APR-AUG	APR-JUL	FEB-DEC
	Southern flounder		2	2	2	2	2	2	2	2	2	2	2	2	-	-	NOV-MAR	JAN-DEC	JAN-DEC
	Spotfin mojarra		2	1	1	1	1	3	3	3	3	3	3	3	-	-	-	-	JAN-DEC
	Spotted seatrout		2	2	2	2	2	2	2	2	2	2	2	2	APR-SEP	APR-SEP	APR-OCT	JAN-DEC	JAN-DEC
	Striped anchovy		2	2	2	2	2	2	2	2	2	2	2	2	-	-	-	-	JAN-DEC
	Striped mullet		3	3	3	3	3	3	3	3	3	3	3	3	-	-	NOV-MAR	JAN-DEC	MAY-DEC
	Threadfin shad		1	1	1	1	1	1	1	1	1	1	1	1	-	-	-	-	JAN-DEC
	White mullet		1			1		1	1	1	1			1	-	-	-	-	MAR-MAR
																			JUN-JUN
84	Inland silverside		3	3	3	3	3	3	3	3	3	3	3	3	MAR-SEP	MAR-SEP	MAR-OCT	JAN-DEC	JAN-DEC
	Longnose killifish		1					1							-	-	-	-	FEB-FEB
																			JUL-JUL
	Marsh killifish		1	1	1			1	1					1	-	-	-	-	JUL-AUG
																			DEC-APR
	Rainwater killifish		1	1	1	1	1						1	1	-	-	-	-	NOV-JUN
	Rough silverside							2	2	1					-	-	-	-	JUN-AUG
	Sailfin molly		2	2	1	1	1	1	1	1	1	1	2		-	-	-	-	SEP-JUL
	Sheepshead minnow		2	2	2	2	2	2	2	2	2	2	2	2	APR-OCT	APR-OCT	APR-NOV	JAN-DEC	JAN-DEC
85	Atlantic bumper					1	1	2	2	1					-	-	-	-	MAY-OCT
	Atlantic spadefish					1	1	1	1	1					-	-	-	-	JUN-OCT
	Black drum		2	2	2	2	2	2	2	2	2	2	2	2	-	-	FEB-APR	JAN-DEC	JAN-DEC
	Bluefish		2	2	2	2	2	2	2	2	2	2	2	2	-	-	-	MAR-OCT	MAR-DEC
	Florida pompano					2	2	2	2						-	-	-	-	JUN-SEP
	Gulf butterflyfish		2	2	2	2	2	2	2	1	1	2	2	2	-	-	-	-	JAN-DEC
	Gulf flounder		2	2	2	2	2	2	2	2	2				-	-	-	-	FEB-OCT
	Harvestfish					2	2	2	2	2	2				-	-	-	-	MAY-OCT
	Ladyfish		1	1	1	1							1	1	-	-	-	-	FEB-JUN
																			NOV-DEC
	Lane snapper							1	1	1					-	-	-	-	JUL-SEP
	Sheepshead		2	2	3	3	3	2	2	2	2	2	2	2	-	-	MAR-JUL	JAN-DEC	JAN-DEC
	Southern hake		1	2	2	2	1						1		-	-	-	-	DEC-MAY

Alabama: ESIMAP 28 (cont.)

BIOLOGICAL RESOURCES: (cont.)

HABITAT:

RAR#	Species	S F Conc.	J	F	M	A	M	J	J	A	S	O	N	D
200	Panhandle lily		X	X	X	X	X	X	X	X	X	X	X	X
206	Naked-stemmed panic grass		X	X	X	X	X	X	X	X	X	X	X	X

INVERTEBRATE:

RAR#	Species	S F Conc.	J	F	M	A	M	J	J	A	S	O	N	D	Spawning	Eggs	Larvae	Juveniles	Adults
74	Atlantic brief squid		2	2	2	2	2	2	2	2	2	2	2	2	-	-	-	-	JAN-DEC
	Blue crab		3	3	3	3	3	3	3	3	3	3	3	3	MAR-NOV	MAR-NOV	JAN-DEC	JAN-DEC	JAN-DEC
	Brown shrimp		1	1	3	3	4	4	4	4	4	4	2	-	-	FEB-NOV	JAN-NOV	JUL-SEP	
	Flatclaw hermit		2	2	2	2	2	2	2	2	2	2	2	-	-	-	-	AUG-APR	
	Pink shrimp		2	2	2	2	2	2	2	2	2	2	2	-	-	-	JAN-DEC	JAN-DEC	
	White shrimp		2	2	2	2	2	2	2	2	2	2	2	-	-	-	JAN-DEC	JAN-JUN	
84	Five-slotted sand dollar		1	1	2	2	2	2	1	1	-	-	-	-	-	-	-	-	JAN-SEP
	Grass shrimp		3	3	3	3	3	3	3	3	3	2	-	-	-	JAN-DEC	JAN-DEC		
	Lined sea star		2	2	2	2	2	2	2	2	2	2	-	-	-	-	JAN-DEC		
	Thinstripe hermit		2	2	2	2	2	2	2	2	2	2	-	-	-	-	JAN-DEC		
85	Mantis shrimp		2	2	2	2	2	2	2	2	-	-	-	-	-	-	-	-	MAR-NOV

MARINE MAMMAL:

RAR#	Species	S F Conc.	J	F	M	A	M	J	J	A	S	O	N	D	Mating	Calving	Pupping	Molting
1	Bottlenose dolphin		X	X	X	X	X	X	X	X	X	X	X	X	MAR-SEP	MAR-SEP	-	-
	West Indian manatee	E VERY LOW					X	X	X	X	X	X	X	-	-	-	-	

HUMAN USE RESOURCES:

MANAGEMENT AREA:

HUN#	Name	Contact	Phone
24	LILLIAN SWAMP FOREVER WILD S. ADDITION	CARL FERRARO; ADCNR-SLD	251/929-0900

MARINA:

HUN#	Name	Contact	Phone
52	KIT'S MARINA		

Biological information shown on the maps represents known concentration areas or occurrences, but does not necessarily represent the full distribution or range of each species. This is particularly important to recognize when considering potential impacts to protected species.