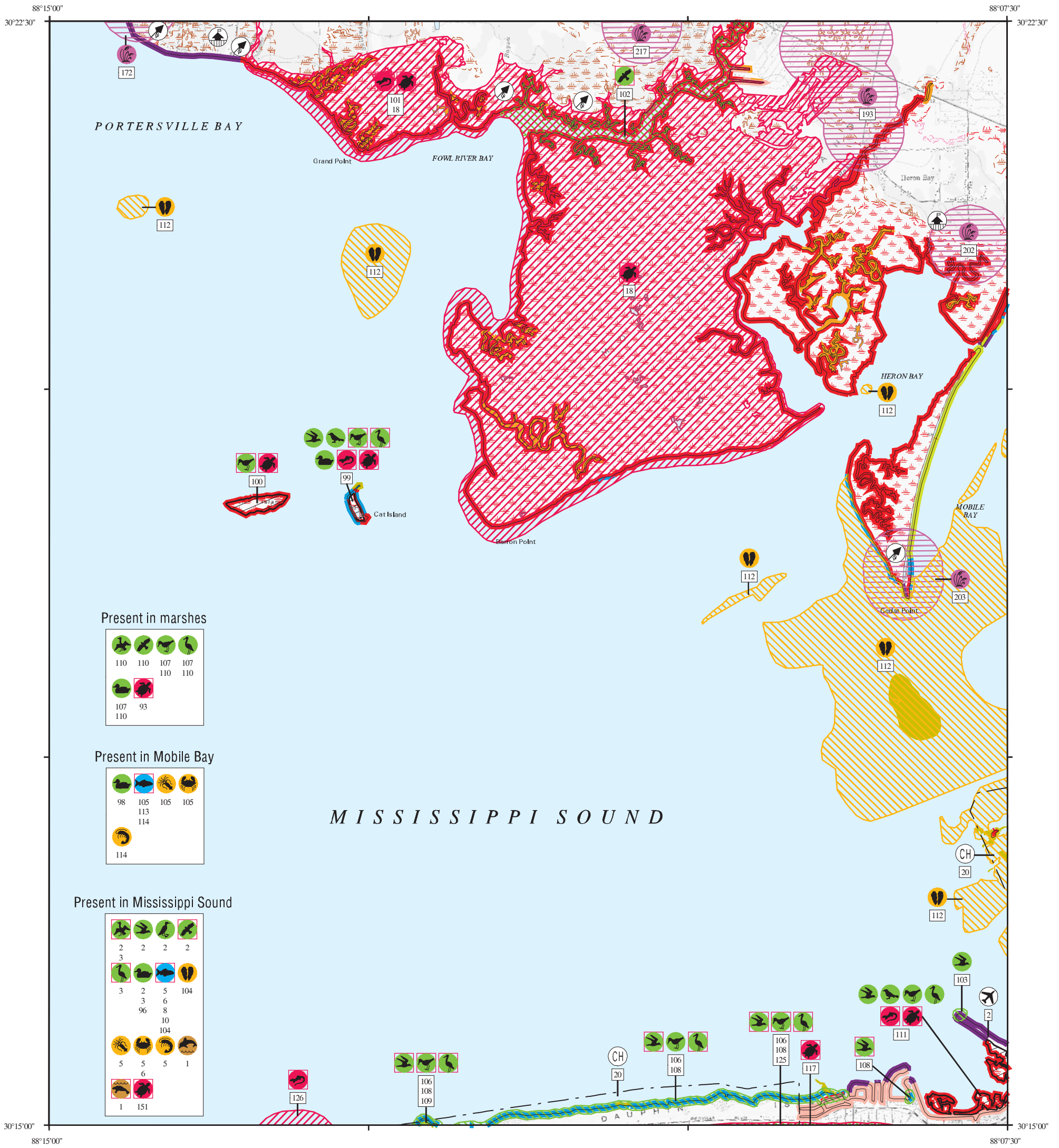
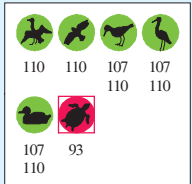


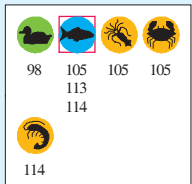
ENVIRONMENTAL SENSITIVITY INDEX MAP



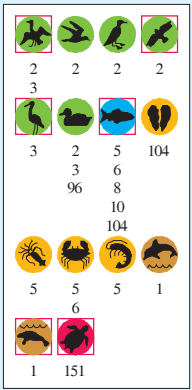
Present in marshes



Present in Mobile Bay



Present in Mississippi Sound



SHORELINE HABITATS (ESI)

- 1B EXPOSED, SOLID MAN-MADE STRUCTURES
- 2A EXPOSED WAVE-CUT PLATFORMS IN MUD OR CLAY
- 2B EXPOSED SCARPS AND STEEP SLOPES IN CLAY
- 3A FINE-TO MEDIUM-GRAINED SAND BEACHES
- 3B SCARPS AND STEEP SLOPES IN SAND
- 4 COARSE-GRAINED SAND BEACHES
- 5 MIXED SAND AND GRAVEL BEACHES
- 6B RIPRAP
- 7 EXPOSED TIDAL FLATS
- 8A SHELTERED SCARPS IN MUD OR CLAY
- 8B SHELTERED, SOLID MAN-MADE STRUCTURES
- 8C SHELTERED RIPRAP
- 9A SHELTERED TIDAL FLATS
- 9B SHELTERED, VEGETATED LOW BANKS
- 10A SALT-AND BRACKISH-WATER MARSHES
- 10B FRESHWATER MARSHES
- 10C SWAMPS
- 10D SCRUB-SHRUB WETLANDS

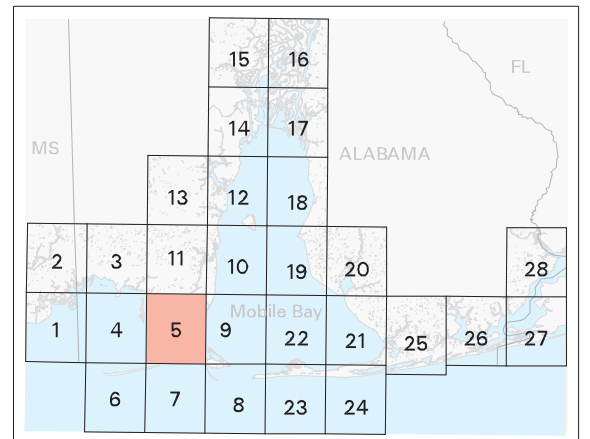


SCALE 1:50000



Not For Navigation
Published: August 2007

Published at Seattle, Washington
National Oceanic and Atmospheric Administration
National Ocean Service
Office of Response and Restoration
Emergency Response Division



Alabama: ESIMAP 5

BIOLOGICAL RESOURCES:

BIRD:

RAR#	Species	S F Conc.	J	F	M	A	M	J	J	A	S	O	N	D	Nesting	Migrating	Molting
2	American white pelican	P	X	X	X	X						X	X	X	-	-	-
	Bonaparte's gull		X	X	X	X	X					X	X		-	-	-
	Brown pelican		X	X	X	X	X	X	X	X	X	X	X	X	-	-	-
	Bufflehead		X	X	X							X	X		-	-	-
	Canvasback		X	X	X							X	X		-	-	-
	Common goldeneye		X	X	X							X	X		-	-	-
	Common loon		X	X	X	X				X	X	X	X		-	-	-
	Forster's tern		X	X	X	X						X	X		-	-	-
	Herring gull		X	X	X	X	X	X	X	X	X	X	X	X	-	-	-
	Horned grebe		X	X	X	X	X			X	X	X	X		-	-	-
	Laughing gull		X	X	X	X	X	X	X	X	X	X	X	X	-	-	-
	Least tern		X	X	X	X				X	X	X	X		-	-	-
	Lesser scaup		X	X	X							X	X		-	-	-
	Magnificent frigatebird				X	X	X	X	X	X	X	X	X	X	-	-	-
	Northern gannet		X	X	X	X				X	X	X	X		-	-	-
	Osprey	P	X	X	X	X	X	X	X	X	X	X	X	X	-	-	-
	Redhead		X	X	X							X	X		-	-	-
	Ring-billed gull		X	X	X	X	X	X	X	X	X	X	X	X	-	-	-
	Royal tern		X	X	X	X	X	X	X	X	X	X	X	X	-	-	-
3	Double-crested cormorant		X	X	X							X	X	X	-	-	-
	Greater scaup		X	X	X							X	X		-	-	-
	Hooded merganser		X	X	X	X						X	X	X	-	-	-
	Red-breasted merganser		X	X	X							X	X	X	-	-	-
	Reddish egret	P	X	X	X	X	X	X	X	X	X	X	X	X	-	-	-
	Ruddy duck		X	X	X							X	X		-	-	-
96	Black scoter		X	X								X	X		-	-	-
	White-winged scoter		X	X								X	X		-	-	-
98	Bufflehead		X	X	X							X	X		-	-	-
	Common goldeneye		X	X	X							X	X		-	-	-
	Greater scaup		X	X	X							X	X		-	-	-
	Lesser scaup		X	X	X							X	X		-	-	-
	Red-breasted merganser		X	X	X							X	X	X	-	-	-
99	American oystercatcher	P 3 PAIRS	X	X	X	X	X	X	X	X	X	X	X	X	MAR-JUN	-	-
	Black skimmer	10 PAIRS	X	X	X	X	X	X	X	X	X	X	X	X	MAY-JUL	-	-
	Caspian tern		X	X	X	X	X	X	X	X	X	X	X	X	JUN-JUL	-	-
	Cattle egret	500 PAIRS	X	X	X	X	X	X	X	X	X	X	X	X	MAY-JUN	-	-
	Clapper rail		X	X	X	X	X	X	X	X	X	X	X	X	MAY-JUN	-	-
	Glossy ibis		X	X	X	X	X	X	X	X	X	X	X	X	APR-JUN	-	-
	Great blue heron	20 PAIRS	X	X	X	X	X	X	X	X	X	X	X	X	FEB-MAY	-	-
	Great egret	20 PAIRS	X	X	X	X	X	X	X	X	X	X	X	X	MAR-JUN	-	-
	Little blue heron	150 PAIRS	X	X	X	X	X	X	X	X	X	X	X	X	APR-JUN	-	-
	Louisiana seaside sparrow		X	X	X	X	X	X	X	X	X	X	X	X	MAR-JUL	-	-
	Mottled duck		X	X	X	X	X	X	X	X	X	X	X	X	APR-JUL	-	-
	Reddish egret	P 5 PAIRS	X	X	X	X	X	X	X	X	X	X	X	X	-	-	-
	Royal tern		X	X	X	X	X	X	X	X	X	X	X	X	JUN-JUL	-	-
	Snowy egret	250 PAIRS	X	X	X	X	X	X	X	X	X	X	X	X	APR-JUN	-	-
	Tricolored heron	400 PAIRS	X	X	X	X	X	X	X	X	X	X	X	X	MAY-JUN	-	-
	White ibis	200 PAIRS	X	X	X	X	X	X	X	X	X	X	X	X	APR-JUL	-	-
100	American oystercatcher	P 1 PAIR	X	X	X	X	X	X	X	X	X	X	X	X	MAR-JUN	-	-
102	Bald eagle	P T	X	X	X							X	X		-	-	-
103	Least tern	100 PAIRS			X	X	X	X	X						MAY-JUL	-	-
106	Black tern		X	X	X							X	X		-	-	-
	Black-bellied plover		X	X	X	X						X	X		-	-	-
	Dunlin		X	X	X							X	X		-	-	-
	Greater yellowlegs		X	X	X							X	X		-	-	-
	Least sandpiper		X	X	X							X	X		-	-	-
	Red knot		X	X	X							X	X		-	-	-
	Reddish egret	P	X	X	X	X	X	X	X	X	X	X	X	X	APR-JUN	-	-
	Ruddy turnstone		X	X	X							X	X		-	-	-
	Sanderling		X	X	X	X				X	X	X	X		-	-	-
	Sandwich tern				X	X	X	X	X	X	X	X	X		JUN-JUL	-	-
	Semipalmated plover		X	X	X							X	X		-	-	-
	Semipalmated sandpiper		X	X	X							X	X		-	-	-
	Spotted sandpiper		X	X	X					X	X	X	X		-	-	-
	Western sandpiper		X	X	X					X	X	X	X		-	-	-
	Willet		X	X	X	X	X	X	X	X	X	X	X	X	MAY-JUL	-	-
107	Black-crowned night-heron		X	X	X	X	X	X	X	X	X	X	X	X	APR-JUN	-	-
	Blue-winged teal		X	X								X			-	-	-
	Cattle egret				X	X	X	X	X	X	X	X	X	X	MAY-JUN	-	-
	Clapper rail		X	X	X	X	X	X	X	X	X	X	X	X	MAY-AUG	-	-
	Great blue heron		X	X	X	X	X	X	X	X	X	X	X	X	FEB-JUL	-	-
	Great egret		X	X	X	X	X	X	X	X	X	X	X	X	MAR-JUN	-	-
	Green-winged teal		X	X	X							X	X		-	-	-
	Killdeer		X	X	X	X	X	X	X	X	X	X	X	X	APR-AUG	-	-
	Little blue heron		X	X	X	X	X	X	X	X	X	X	X	X	MAR-JUL	-	-
	Purple gallinule		X	X	X	X	X								MAY-JUL	-	-
	Snowy egret		X	X	X	X	X	X	X	X	X	X	X	X	APR-JUN	-	-
	Tricolored heron		X	X	X	X	X	X	X	X	X	X	X	X	MAY-JUN	-	-
	Willet		X	X	X	X	X	X	X	X	X	X	X	X	MAY-AUG	-	-
	Yellow-crowned night-heron		X	X	X	X	X	X	X	X	X	X	X	X	APR-JUL	-	-
108	Black skimmer		X	X	X	X	X	X	X	X	X	X	X	X	MAY-JUL	-	-
	Gull-billed tern	P	X	X	X	X	X	X	X						-	-	-
109	Piping plover	P T	X	X	X					X	X	X	X		-	-	-
	Short-billed dowitcher		X	X	X							X	X		-	-	-
110	American bittern		X	X	X							X			-	-	-
	American coot		X	X	X							X	X		-	-	-
	American wigeon		X	X	X							X	X		-	-	-
	Canada goose		X	X	X	X	X	X	X	X	X	X	X	X	MAR-JUL	-	-
	Common moorhen		X	X	X	X	X	X	X	X	X	X	X	X	MAY-JUL	-	-
	Gadwall		X	X	X							X	X		-	-	-
	Green-backed heron		X	X	X	X	X	X	X	X	X	X	X	X	MAY-JUL	-	-
	King rail		X	X	X	X	X	X	X	X	X	X	X	X	MAY-AUG	-	-
	Least bittern		X	X	X	X	X	X	X	X	X	X	X	X	MAY-JUL	-	-
	Mallard		X	X	X	X	X	X	X	X	X	X	X	X	APR-JUL	-	-
	Mottled duck		X	X	X	X	X	X	X	X	X	X	X	X	APR-JUL	-	-
	Northern harrier		X	X								X	X	X	-	-	-
	Pied-billed grebe		X	X	X	X						X	X	X	-	-	-
	Snow goose		X	X	X							X	X		-	-	-
	Solitary sandpiper		X	X	X	X				X	X	X			-	-	-
	Sora		X	X	X	X				X	X	X	X		-	-	-
	Spotted sandpiper		X	X	X					X	X	X	X		-	-	-
	Virginia rail		X	X	X					X	X	X	X		-	-	-
	White ibis		X	X	X	X	X	X	X	X	X	X	X	X	APR-JUL	-	-
111	Black-necked stilt		X	X	X	X									-	-	-
	Caspian tern		X	X	X	X	X	X	X	X	X	X	X	X	JUN-JUL	-	-
	Green heron		X	X	X	X	X	X	X	X	X	X	X	X	MAY-JUL	-	-
	Nelson's sharp-tailed sparrow		X	X	X	X						X	X	X	-	-	-
	Pectoral sandpiper		X	X	X					X	X	X			-	-	-
	Spotted sandpiper		X	X	X					X	X	X	X		-	-	-

Biological information shown on the maps represents known concentration areas or occurrences, but does not necessarily represent the full distribution or range of each species. This is particularly important to recognize when considering potential impacts to protected species.

Alabama: ESIMAP 5 (cont.)

BIOLOGICAL RESOURCES: (cont.)

BIRD: (cont.)

RAR#	Species	S F Conc.	J	F	M	A	M	J	J	A	S	O	N	D	Nesting	Migrating	Molting
125	Least tern				X	X	X	X	X	X					MAY-JUL	-	-
	Piping plover	P T	X	X	X					X	X	X	X	X	-	-	-
	Wilson's plover	P	X	X	X	X	X	X	X	X	X	X			MAR-JUN	-	-

FISH:

RAR#	Species	S F Conc.	J	F	M	A	M	J	J	A	S	O	N	D	Spawning	Eggs	Larvae	Juveniles	Adults
5	Atlantic croaker		4	4	4	4	4	4	3	3	3	3	3	3	SEP-APR	SEP-APR	OCT-APR	JAN-DEC	JAN-DEC
	Atlantic stingray		2	2	2	2	2	2	2	2	2	2	2	2	-	-	-	-	JAN-DEC
	Bay anchovy		3	3	3	4	4	4	4	4	4	4	4	4	JAN-DEC	JAN-DEC	JAN-DEC	JAN-DEC	JAN-DEC
	Bay whiff		2	2	2	2	2	2	2	2	2	2	2	2	-	-	-	-	JAN-DEC
	Crevalle jack		2	2	2	2	2	2	2	2	2	2	2	2	JAN-DEC	MAY-SEP	MAY-SEP	JAN-DEC	MAY-SEP
	Darter goby		2	2	2	2	2	2	2	2	2	2	2	2	-	-	-	-	JAN-DEC
	Fringed flounder		2	2	2	2	2	2	2	2	2	2	2	2	-	-	-	-	JAN-DEC
	Gafftopsail catfish						1	2	2	2	1				-	-	-	-	JUN-OCT
	Gray snapper						1	1	1	1	1	1	1	1	-	-	-	-	MAY-DEC
	Gulf killifish		2	2	2	3	3	3	3	3	3	3	2		JAN-DEC	JAN-DEC	JAN-DEC	JAN-DEC	JAN-DEC
	Gulf menhaden		4	4	4	4	4	4	4	4	4	4	4	4	OCT-MAR	OCT-MAR	OCT-MAY	JAN-DEC	JAN-DEC
	Gulf toadfish		2	2	2	2	2	2	2	2	2	2	2	2	-	-	-	-	JAN-DEC
	Hardhead catfish		2	2	2	4	4	4	4	4	4	4	4	2	APR-AUG	APR-AUG	APR-SEP	JAN-DEC	JAN-DEC
	Least puffer		2	2	2	2	2	2	2	2	2	2	2	2	-	-	-	-	JAN-DEC
	Pigfish			1	1	1	1	1	1	2	1				-	-	-	-	MAR-NOV
	Pinfish		3	3	3	3	4	4	4	4	4	3	3		NOV-MAR	NOV-MAR	NOV-APR	JAN-DEC	JAN-DEC
	Red drum		2	2	2	2	2	2	2	2	2	2	2	2	SEP-NOV	SEP-FEB	SEP-FEB	JAN-DEC	JAN-DEC
	Sand seatrout		4	4	4	4	4	4	4	4	4	4	4	4	MAR-OCT	MAY-OCT	FEB-OCT	JAN-DEC	JAN-DEC
	Silver perch		3	3	3	3	3	3	3	3	3	3	3	3	MAY-SEP	MAY-SEP	MAY-SEP	JAN-DEC	JAN-DEC
	Southern flounder		3	3	3	3	3	3	3	2	3	3	3	3	SEP-JAN	SEP-JAN	SEP-APR	JAN-DEC	JAN-DEC
	Southern kingfish		2	2	3	3	3	3	3	3	3	3	3	3	-	-	-	-	JAN-DEC
	Spot		4	4	4	4	4	4	4	4	4	4	4	4	NOV-MAR	NOV-APR	NOV-MAR	JAN-DEC	JAN-DEC
	Spotfin mojarra						1	2	2	1	1	1	1		-	-	-	-	MAY-NOV
	Spotted seatrout		3	3	3	3	3	3	3	3	3	3	3	3	MAR-SEP	MAR-SEP	MAR-OCT	JAN-DEC	JAN-DEC
	Star drum		1	1	2	2	2	2	2	2	2	1	1		-	-	-	-	JAN-DEC
	Striped anchovy						1	1	1	1	1	1	1	1	-	-	-	-	APR-DEC
	Striped mullet		4	4	4	4	4	4	4	4	4	4	4	4	NOV-MAY	NOV-MAY	NOV-MAY	JAN-DEC	JAN-DEC
	Threadfin shad		2	2	2	2	1	1	1	1	1	1	2		-	-	-	-	JAN-DEC
	White mullet		1	1	1	1	1	1	1	1	1	1	1	1	-	-	-	-	JAN-DEC
6	Inland silverside		3	3	3	3	4	4	4	4	4	4	3		JAN-DEC	JAN-DEC	JAN-DEC	JAN-DEC	JAN-DEC
	Longnose killifish		1	1	1	1	2	1	1	1	1	1	1	1	JUN-JUL	-	-	-	JAN-DEC
	Marsh killifish		1	1	1	1	1	1	1	1	1	1	1	1	-	-	-	-	JAN-DEC
	Northern kingfish			1	1	2	2	1	1	1	1	1	1		-	-	-	-	MAR-DEC
	Rough silverside		3	3	3	3	4	4	4	4	4	4	3		JAN-DEC	JAN-DEC	JAN-DEC	JAN-DEC	JAN-DEC
	Sheepshead minnow		3	3	3	3	3	3	3	3	3	3	3	3	JAN-DEC	JAN-DEC	JAN-DEC	JAN-DEC	JAN-DEC
8	Atlantic spadefish				2	2	3	3	3	3	2	1			-	-	JUN-SEP	-	APR-DEC
	Atlantic sturgeon		1	1	1	1						1	1	1	-	-	-	-	OCT-MAY
	Black drum		2	2	2	2	2	2	2	2	2	2	2	2	FEB-APR	FEB-APR	FEB-APR	JAN-DEC	JAN-DEC
	Bluefish				2	2	2	2	2	2	2	2	2	2	APR-OCT	-	-	-	APR-OCT
	Florida pompano				1	2	3	3	2	2	1	1			MAY-JUL	MAY-JUL	MAY-JUL	MAY-NOV	MAR-SEP
	Gulf butterfish		2	2	2	3	3	2	2	2	2	2	2	2	-	-	-	-	JAN-DEC
	Gulf flounder		2	2	2	2	2	2	2	2	2	2	2	2	NOV-FEB	NOV-FEB	NOV-FEB	JAN-DEC	JAN-DEC
	Harvestfish		1	1	1	2	2	2	2	2	2	1	1		-	-	-	-	JAN-DEC
	Ladyfish			1	1	2	2	1	1	1	1				-	-	-	-	MAR-OCT
	Scaled sardine				1	1	1	2	2	2					-	-	-	-	APR-OCT
	Sheepshead		2	2	2	2	2	2	2	2	2	2	2	2	FEB-MAR	FEB-APR	FEB-MAY	JAN-DEC	JAN-DEC
	Silver seatrout		1	1	1	1	1	1	2	2	1	1	1		-	-	-	-	JAN-DEC
	Southern hake		1	1	1	1						1			-	-	-	-	FEB-MAY
	Spanish mackerel		1	1	1	3	3	3	3	3	3	1	1	1	JUN-SEP	JUN-SEP	JUN-SEP	APR-SEP	JAN-DEC
	Spotted hake		1	1	1	1	1								-	-	-	-	JAN-JUN
	Tarpon		2	2	2	2	2	2	2	2	2	2	2	2	APR-SEP	APR-SEP	MAY-SEP	JAN-DEC	JAN-DEC
10	Gulf sturgeon	P T	X	X	X	X	X	X	X	X	X	X	X	X	-	-	-	-	JAN-DEC
104	Alabama shad		1												-	-	-	-	FEB-FEB
	Gizzard shad		1						1						-	-	-	-	FEB-FEB
	Lane snapper								1		1	1			-	-	-	-	AUG-AUG
	Paddlefish	P	1												-	-	-	-	JUL-JUL
	Saltmarsh topminnow							1							-	-	-	-	OCT-NOV
	Skipjack herring									1					-	-	-	-	JAN-JAN
105	Atlantic croaker		4	4	4	4	4	4	4	4	4	4	3	3	-	-	AUG-APR	JAN-DEC	MAY-DEC
	Bay anchovy		4	4	4	4	4	4	4	4	4	4	4	4	FEB-SEP	FEB-NOV	FEB-DEC	JAN-DEC	JAN-DEC
	Bay whiff		2	2	2	3	3	3	3	3	3	3	2		-	-	DEC-APR	JAN-DEC	-
	Blue catfish		1	2	2	2	1	1					1		-	-	-	-	NOV-JUL
	Crevalle jack		2	2	2	2	2	2	2	2	2	2	2	2	JAN-DEC	MAY-SEP	MAY-SEP	JAN-DEC	MAY-SEP
	Darter goby		2	2	2	2	2	2	2	2	2	2	2	2	-	-	-	-	JAN-DEC
	Gafftopsail catfish						1	2	2	1	2	1	1		-	-	-	-	MAY-DEC
	Gray snapper						2	2	2	2	2	2	2	2	-	-	-	-	MAY-DEC
	Gulf killifish		3	3	3	3	3	3	3	3	3	3	3	3	MAR-SEP	MAR-SEP	MAR-OCT	JAN-DEC	JAN-DEC
	Gulf menhaden		2	4	4	4	4	3	3	3	4	3	4		-	SEP-FEB	OCT-MAY	FEB-DEC	FEB-OCT
	Gulf sturgeon	P T	X	X	X	X	X	X	X	X	X	X	X	X	-	-	-	-	JAN-DEC
	Hardhead catfish		2	2	2	3	3	3	3	3	3	3	2		APR-AUG	APR-AUG	APR-SEP	JAN-DEC	JAN-DEC
	Red drum		2	2	2	2	2	2	2	2	2	2	2	2	-	SEP-DEC	SEP-DEC	JAN-DEC	JUN-OCT
	Sand seatrout		2	2	4	4	4	4	4	3	3	3	2	2	FEB-SEP	FEB-SEP	FEB-SEP	JAN-DEC	JAN-DEC
	Silver perch		2	2	2	2	2	2	2	2	2	2	2	2	APR-AUG	APR-AUG	APR-AUG	JAN-DEC	JAN-DEC
	Southern flounder		2	2	2	2	2	2	2	2	2	2	2	2	-	-	NOV-MAR	JAN-DEC	JAN-DEC
	Southern hake		1	1	2	2	2					1	1		-	-	-	-	OCT-OCT
	Spot		4	4	4	4	4	4	4	3	3	3	3	3	-	-	NOV-APR	JAN-DEC	JAN-DEC
	Spotted seatrout		3	3	3	3	3	3	3	3	3	3	3	3	APR-AUG	APR-AUG	APR-OCT	JAN-DEC	JAN-DEC
	Striped anchovy		2	2	2	2	2	2	2	2	2	2	2	2	-	-	-	-	JAN-DEC
	Striped mullet		3	3	3	3	3	3	3	3	3	3	3	3	-	-	DEC-APR	JAN-DEC	MAY-DEC
	Threadfin shad																		

Alabama: ESIMAP 5 (cont.)

BIOLOGICAL RESOURCES: (cont.)

HABITAT: (cont.)

RAR#	Species	S F Conc.	J	F	M	A	M	J	J	A	S	O	N	D
202	Christmas berry		X	X	X	X	X	X	X	X	X	X	X	X
203	Christmas berry		X	X	X	X	X	X	X	X	X	X	X	X
	Tiny-leaved buckthorn		X	X	X	X	X	X	X	X	X	X	X	X
217	Flax-leaf false-foxglove		X	X	X	X	X	X	X	X	X	X	X	X
	Lattice jointgrass		X	X	X	X	X	X	X	X	X	X	X	X
	Yellow fringeless orchid		X	X	X	X	X	X	X	X	X	X	X	X

INVERTEBRATE:

RAR#	Species	S F Conc.	J	F	M	A	M	J	J	A	S	O	N	D	Spawning	Eggs	Larvae	Juveniles	Adults
5	Atlantic brief squid		2	2	2	2	2	2	2	2	2	2	2	2	-	-	-	-	JAN-DEC
	Blue crab		4	4	3	4	4	4	4	4	4	4	4	4	MAR-NOV	MAR-NOV	MAR-DEC	JAN-DEC	JAN-DEC
	Brown shrimp		4	4	4	4	4	4	4	4	4	4	4	4	NOV-APR	NOV-APR	FEB-NOV	JAN-DEC	JAN-DEC
	Grass shrimp		3	3	3	3	3	3	3	3	3	3	3	2	-	-	-	JAN-DEC	JAN-DEC
	Pink shrimp		1	1	2	2	2	2	2	2	2	2	2	2	MAR-NOV	MAR-NOV	MAR-NOV	JAN-DEC	JAN-DEC
	White shrimp		4	4	3	3	3	4	4	4	4	4	4	4	MAR-OCT	MAR-NOV	JAN-DEC	JAN-DEC	JAN-DEC
6	Thinstripe hermit		2	2	2	2	2	2	2	2	2	2	2	2	-	-	-	-	JAN-DEC
104	Hooked mussel		1	1	1	1	1	1	1	1	1	1	1	1	-	-	-	-	JAN-DEC
105	Atlantic brief squid		2	2	2	2	2	2	2	2	2	2	2	2	-	-	-	-	JAN-DEC
	Blue crab		4	4	4	4	4	4	4	4	4	4	4	4	MAR-NOV	MAR-NOV	JAN-DEC	JAN-DEC	JAN-DEC
112	Eastern oyster		4	4	4	4	4	4	4	4	4	4	4	4	APR-NOV	-	APR-NOV	APR-NOV	JAN-DEC
114	Brown shrimp		4	4	4	4	4	4	4	4	4	4	4	4	NOV-APR	NOV-APR	FEB-NOV	MAR-NOV	JUN-AUG
	Pink shrimp		2	2	2	2	2	2	2	2	2	2	2	2	MAR-NOV	MAR-NOV	MAR-NOV	JAN-DEC	JAN-DEC
	White shrimp		4	4	3	3	3	4	4	4	4	4	4	4	MAR-OCT	MAR-NOV	JAN-DEC	JAN-DEC	JAN-DEC

MARINE MAMMAL:

RAR#	Species	S F Conc.	J	F	M	A	M	J	J	A	S	O	N	D	Mating	Calving	Pupping	Molting
1	Bottlenose dolphin		X	X	X	X	X	X	X	X	X	X	X	X	MAR-SEP	MAR-SEP	-	-
	West Indian manatee	E VERY LOW					X	X	X	X	X	X	X	X	-	-	-	-

REPTILE:

RAR#	Species	S F Conc.	J	F	M	A	M	J	J	A	S	O	N	D	Nesting	Hatching	Interesting	Juveniles	Adults	
18	Alabama red-bellied turtle	P E	X	X	X	X	X	X	X	X	X	X	X	X	APR-AUG	-	-	-	JAN-DEC	JAN-DEC
93	Mississippi diamondback terrapin	P	X	X	X	X	X	X	X	X	X	X	X	X	APR-AUG	-	-	-	JAN-DEC	JAN-DEC
99	Gulf salt marsh snake	P	X	X	X	X	X	X	X	X	X	X	X	X	-	-	-	JAN-DEC	JAN-DEC	
	Mississippi diamondback terrapin	P	X	X	X	X	X	X	X	X	X	X	X	X	APR-AUG	-	-	-	JAN-DEC	JAN-DEC
100	Mississippi diamondback terrapin	P	X	X	X	X	X	X	X	X	X	X	X	X	APR-AUG	-	-	-	JAN-DEC	JAN-DEC
101	Gulf salt marsh snake	P	X	X	X	X	X	X	X	X	X	X	X	X	-	-	-	JAN-DEC	JAN-DEC	
111	Gulf salt marsh snake	P	X	X	X	X	X	X	X	X	X	X	X	X	-	-	-	JAN-DEC	JAN-DEC	
	Mississippi diamondback terrapin	P	X	X	X	X	X	X	X	X	X	X	X	X	APR-AUG	-	-	-	JAN-DEC	JAN-DEC
117	Green sea turtle	P T			X	X	X	X	X	X	X	X	X	X	APR-SEP	-	-	-	MAR-NOV	APR-SEP
	Kemp's ridley sea turtle	P E			X	X	X	X	X	X	X	X	X	X	APR-SEP	-	-	-	MAR-NOV	APR-SEP
	Loggerhead sea turtle	P T			X	X	X	X	X	X	X	X	X	X	APR-SEP	-	-	-	MAR-NOV	APR-SEP
126	Green water snake		X	X	X	X	X	X	X	X	X	X	X	X	-	-	-	JAN-DEC	JAN-DEC	
	Gulf salt marsh snake	P	X	X	X	X	X	X	X	X	X	X	X	X	-	-	-	JAN-DEC	JAN-DEC	
151	Green sea turtle	P T			X	X	X	X	X	X	X	X	X	X	-	-	-	MAR-NOV	APR-SEP	
	Kemp's ridley sea turtle	P E			X	X	X	X	X	X	X	X	X	X	-	-	-	MAR-NOV	APR-SEP	
	Leatherback sea turtle	P E			X	X	X	X	X	X	X	X	X	X	-	-	-	MAR-NOV	-	
	Loggerhead sea turtle	P T			X	X	X	X	X	X	X	X	X	X	-	-	-	MAR-NOV	APR-SEP	

HUMAN USE RESOURCES:

AIRPORT:

HUN#	Name	Contact	Phone
2	DAUPHIN ISLAND AIRPORT		

CRITICAL HABITAT:

HUN#	Name	Contact	Phone
20	PIPING PLOVER CRITICAL HABITAT	USFWS	251/441-5181

Biological information shown on the maps represents known concentration areas or occurrences, but does not necessarily represent the full distribution or range of each species. This is particularly important to recognize when considering potential impacts to protected species.