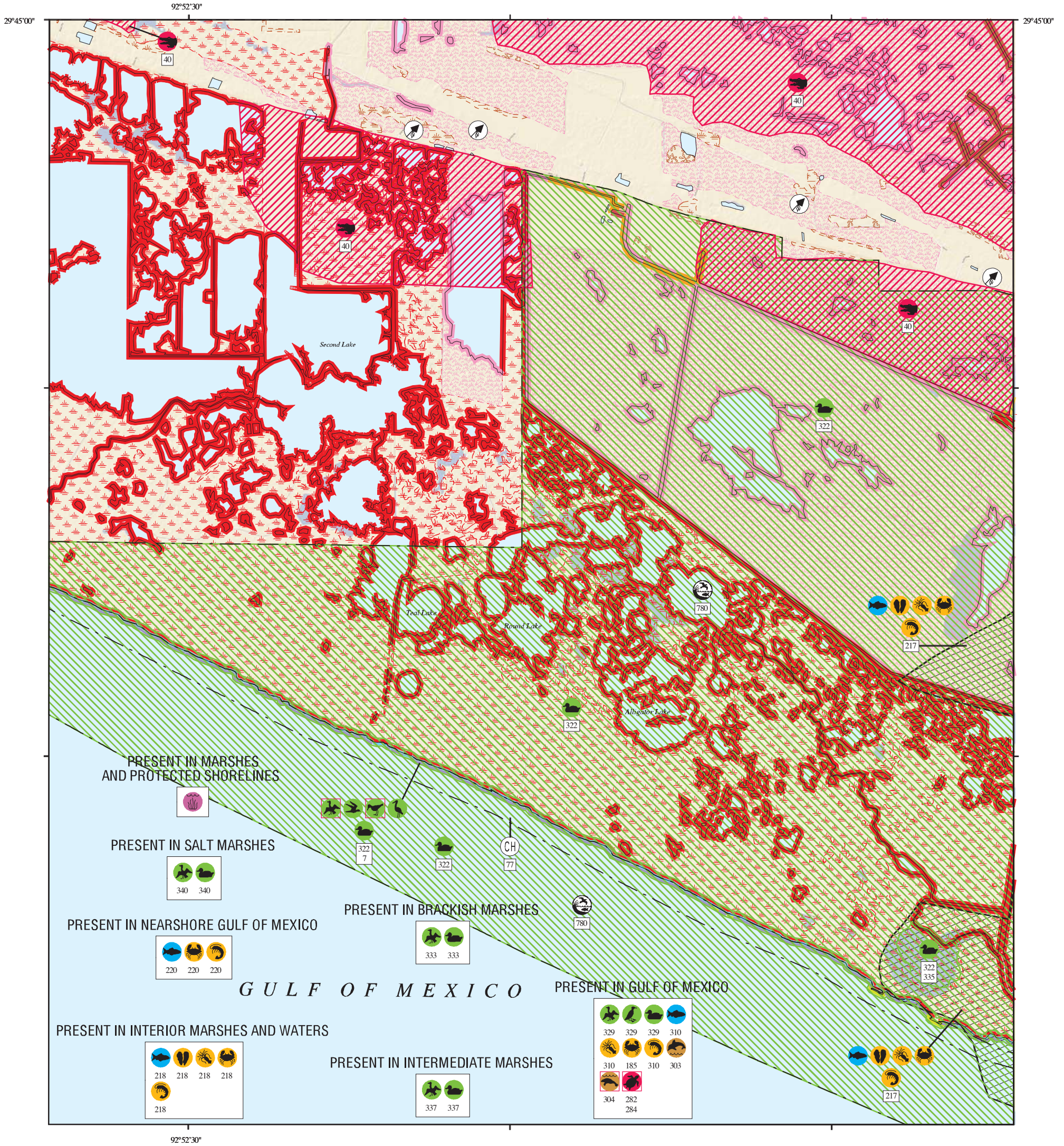


ENVIRONMENTAL SENSITIVITY INDEX MAP



SHORELINE HABITATS (ESI)

- 1B EXPOSED, SOLID MAN-MADE STRUCTURES
- 2A EXPOSED WAVE-CUT PLATFORMS IN CLAY OR MUD
- 2B EXPOSED SCARPS AND STEEP SLOPES IN CLAY OR MUD
- 3A FINE- TO MEDIUM-GRAINED SAND BEACHES
- 3B SCARPS AND STEEP SLOPES IN SAND
- 4 COARSE-GRAINED SAND BEACHES
- 5 MIXED SAND AND GRAVEL (SHELL) BEACHES
- 6A GRAVEL BEACHES
- 6B RIPRAP
- 7 EXPOSED TIDAL FLATS
- 8A SHELTERED SCARPS IN CLAY OR MUD
- 8B SHELTERED, SOLID MAN-MADE STRUCTURES
- 8C SHELTERED RIPRAP
- 8E PEAT
- 9A SHELTERED TIDAL FLATS
- 9B VEGETATED LOW BANKS
- 10A SALT-AND BRACKISH-WATER MARSHES
- 10B FRESHWATER MARSHES
- 10C SWAMPS
- 10D SCRUB-SHRUB WETLANDS, INCLUDING BLACK MANGROVES

SCALE 1:50000

1 KILOMETER

1 MILE

1 NAUTICAL MILE

LOUISIANA

Gulf of Mexico

Vol. 1

Vol. 2

Vol. 3

Not For Navigation
Published: December 2013

Published at Seattle, Washington
National Oceanic and Atmospheric Administration
National Ocean Service
Office of Response and Restoration
Emergency Response Division

Louisiana ESI - Volume 1

ESI-14

Louisiana: ESIMAP 14 (cont.)

HUMAN USE RESOURCES:

CRITICAL HABITAT:

HUN#	Name	Contact	Phone
77	PIPING PLOVER CRITICAL HABITAT	USEWS	

MANAGEMENT AREA:

HUN#	Name	Contact	Phone
780	ROCKEFELLER WILDLIFE REFUGE	LDWF	

Biological information shown on the maps represents known concentration areas or occurrences, but does not necessarily represent the full distribution or range of each species. The LDWF-LNHP provided information for some of the federally and state listed species and species of conservation concern for display in the ESI atlas and accompanying digital data in 2013. The available LNHP data sets are to be used for oil spill response and spill response planning only. These data represent existing information known to the LNHP at the time of the request and should never be substituted for consultation with the LNHP. The more spatially generalized 2011 polygonal waterbird colony data was provided by LNHP and the more spatially specific 2006 point waterbird colony data was provided by BTNEP. The display of these two data sets does not imply that EITHER or BOTH sets of polygons and/or points (especially if counts are aggregated) reflect current nest locations OR counts, but rather are to be used as a guide for what species could be present.
