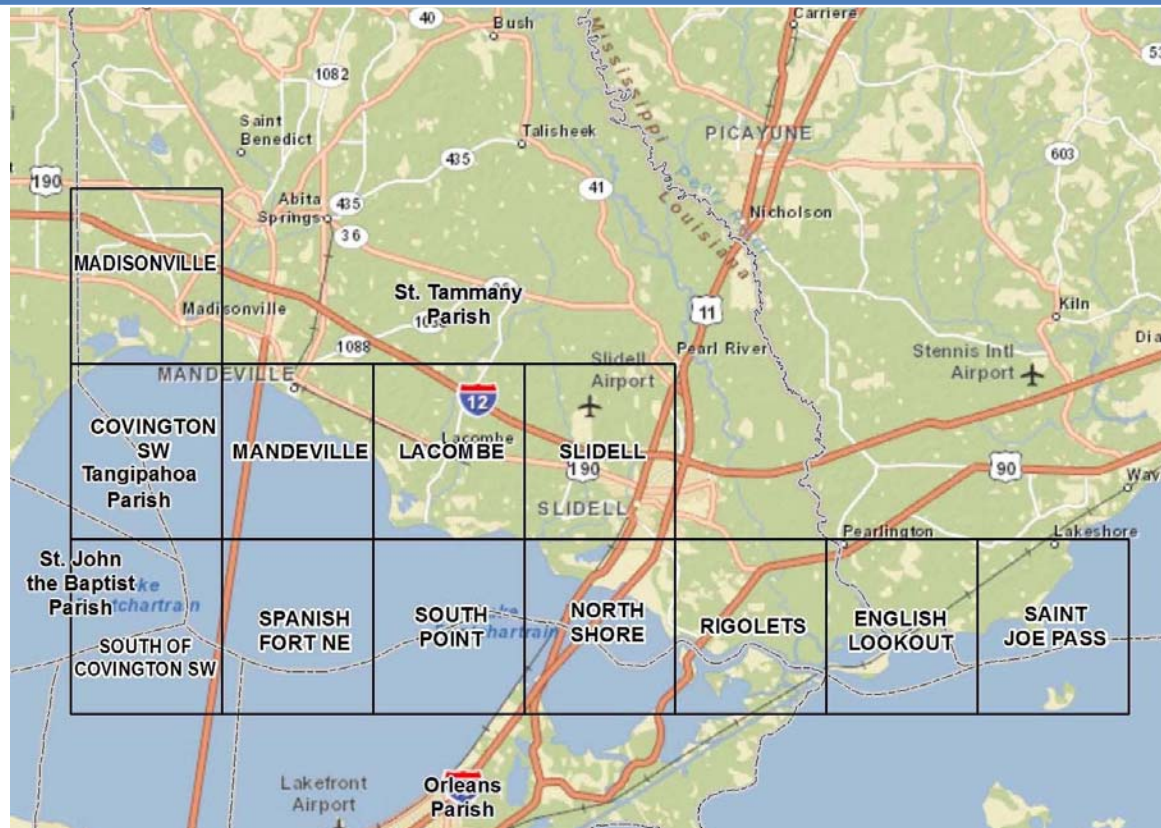


2013

Geographic Response Plan St. Tammany Parish



New Orleans Area Contingency
Plan

U. S. Coast Guard Sector New
Orleans

200 Hendee Street

New Orleans, 70114

This page is intentionally left blank

New Orleans Area Contingency Plan

Geographic Response Plan- St. Tammany Parish



**St. Tammany Parish Geographic Response Plan
Signature Page**

A handwritten signature in blue ink, reading "Peter W. Gautier", written over a horizontal blue line.

Peter W. Gautier
Captain, US Coast Guard
Commander, Sector New Orleans
Federal On-Scene Coordinator, New Orleans

A handwritten signature in blue ink, reading "Brian Wynne", written over a horizontal blue line.

Brian Wynne
Acting, Louisiana Oil Spill Coordinator

A handwritten signature in blue ink, reading "Patricia P. Brister", written over a horizontal blue line.

Patricia Brister
President, St. Tammany Parish

New Orleans Area Contingency Plan

Geographic Response Plan- St. Tammany Parish

This page is intentionally left blank

New Orleans Area Contingency Plan

Geographic Response Plan- St. Tammany Parish

This page is intentionally left blank

New Orleans Area Contingency Plan

Geographic Response Plan- St. Tammany Parish

Table of Contents

St. Tammany Parish Geographic Response Plan Signature Page.....	i
Record of Changes	iii
1. Introduction	1
1.1 Scope	2
1.2 Development	2
1.3 Guiding Principles of the GRP	3
1.4 Sensitive Resources Addressed by GRPs	4
1.5 Evaluation Criteria for GRPs	5
1.6 Prioritization.....	8
1.7 Strategy Selection	10
2 Site Description	12
3 Maps	12
St. Tammany GRP Content Contributors.....	Appendix A
GRP Comments/Corrections/Suggestions.....	Appendix B

New Orleans Area Contingency Plan

Geographic Response Plan- St. Tammany Parish

This page is intentionally left blank

St. Tammany Parish Geographic Response Plan

1. Introduction

This Geographic Response Plan (GRP) is an annex to the New Orleans Area Contingency Plan (NOACP) and a key element of both facility and vessel contingency plans. This GRP has two main functions:

- From a planning perspective, the GRP provides a description of sensitive biological, cultural, and economic resources that must be addressed to be in compliance with:
 - The National Oil and Hazardous Substance Pollution Contingency Plan (NCP, 40 CFR Part 300.210(3)(i)). Area Contingency Plans are required to describe areas of special economic and environmental importance that could be impacted during an oil spill.
 - The National Historic Preservation Act of 1966 contains applicable, relevant and appropriate requirements. The GRPs also address sensitive historic and prehistoric resources.
- From an operational perspective, the GRP guides responders in the first 24-48 hours of an oil spill by:
 - Providing a prioritized list of tactical response strategies to be implemented during the early hours of an oil spill (usually before the formation of the Unified Command);
 - Providing detailed information for booming strategies that could be utilized to minimize impacts to predetermined sensitive resources.

Once the Unified Command is formed, additional operational strategies and tactics will be relayed to the field in the form of the ICS-204 work assignment sheets.

Because the GRP is the primary tool used during an initial phase of the response and fairly broad in their scope, they are not intended to minimize impacts to all possible sensitive areas that could be affected by an oil spill. Likewise, the GRPs are not intended to be an exhaustive list of all the tactical strategies that could, or should, be implemented during a spill.

New Orleans Area Contingency Plan

Geographic Response Plan- St. Tammany Parish

1.1 Scope

This Geographic Response Plan (GRP) is intended to help the first responders of an oil discharge or hazardous substance release avoiding the initial confusion that generally accompanies any incident. This document serves as the federal and state on-scene-coordinators “orders” during an incident in the area covered by this GRP (see Section 2 for area covered). As such it has been approved by the U.S. Coast Guard Sector New Orleans, the Louisiana Oil Spill Coordinator’s Office, and St. Tammany Parish. Changes to this document are expected as testing is conducted through drills, site visits, and actual use in an incident. To submit comments, corrections, or suggestions please refer to Appendix B.

The scope of this GRP is to identify sensitive sites to be considered for protection in the first 24 to 48 hours of an incident and the generic response strategy for this site considering unique characteristics, noted hydrology and climatic considerations. This index is not all encompassing as sites not identified in this index may need to be evaluated for protection as an incident progresses.

GRPs only address protection of sensitive public resources. It is the responsibility of private resource owners and/or potentially liable parties to address protection of private resources (such as commercial marina and private water intakes).

1.2 Development

This Index has been developed for the Coastal Zone, as defined in the National Contingency Plan (40 CFR Part 300) for St. Tammany Parish. It is prepared through the efforts and cooperation of Louisiana State Trustee Agencies, Parish Representatives, and Federal Trustee Agencies, other federal and state agencies, response organizations, and local emergency responders.

This Index was developed through workshops involving federal, state, and local stakeholders. Workshop participants identified resources which require protection and developed operational strategies.

Following the workshops, the data gathered was processed and reproduced in the form of maps and matrices which appear in Chapter 3. The maps were generated using ArcGIS, and the tables were created using Microsoft Access.

The first goal of a GRP is to identify resources needing protection; response resources needed; tribal and local response community contacts; and local conditions that may affect response strategies.

Secondly, response strategies were developed based on the sensitive resources noted hydrology and climatic considerations. Individual response strategies identify the appropriate boom implementation.

New Orleans Area Contingency Plan

Geographic Response Plan- St. Tammany Parish

Draft maps and matrices were sent out for review and consideration of strategy viability. Verification at local, state, and federal levels was conducted and changed proposed by the participants were included in a semi-final draft, which was offered for final review.

Finally, the final GRP was compiled along with site description, reference maps, and information to support logistical needs.

1.3 Guiding Principles of the GRP

Safety and health of the responders always takes precedence over the protection of sensitive environmental resources.

Source control and containment are always a **HIGER** priority over GRP strategy deployments.

The protection strategies in the GRPs have been designed for the use with persistent oils and may not be suitable for other petroleum or hazardous substances.

Environmental conditions (winds, currents, and tides), together with the physical limitations of existing spill response technology, may preclude the effective protection of some areas.

Once a coordinated response has been established during an oil spill incident, booming strategy selection and prioritization are refined and supplemented based on real-time assessments. The UC has the authority to supersede the strategies proposed in the GRPs.

Response personnel may find it necessary to deviate from the exact details provided for deploying a particular strategy. An onsite evaluation of actual conditions is often needed to determine whether a strategy is safe to deploy, whether it will be effective under existing environmental conditions, or effective for the particular type of oil involved. Therefore, field personnel should use their best judgment to modify existing strategies based on real-time conditions and notify command accordingly. Field personnel are also encouraged to notify the command post regarding opportunities for deployment additional strategies that might be used to take advantage of incident-specific conditions.

The GRPs Include the Following Types of Response Strategies

Collection Booming with On-Water Recovery: Deploying various types of boom to collect oil for mechanical removal using sorbent materials, vacuum trucks, or near shore skimming devices;

New Orleans Area Contingency Plan

Geographic Response Plan- St. Tammany Parish

Exclusion Booming: Deploying various types of boom to reduce oiling in sensitive areas;

Deflection Booming: Deploying various types of boom to divert oil away from a sensitive area and/or divert oil toward a collection point.

GRPs Do Not Include

In-Situ Burning: Burning oil on the water; usually requires containment by fire-resistant boom. Chapter 9000, Appendix C for additional NOAC policy on in-situ burning use;

Dispersants: Applying chemical agents, usually by aircraft, to aid in breaking up surface slicks and dispersing oil within the water column. See Chapter 9000, Appendix D for NOAC policy on dispersant use;

Shoreline Cleanup: Physical removal or chemical treatment of stranded oil. See Chapter 9000, Appendix G for the NOAA Shoreline Countermeasure Manual for Tropical Coastal Environments and Appendix F Oil Spill Best Management Practices for guidance on shoreline cleanup;

Open-Water Mechanical Recovery: Physical removal of oil using boats and/or vessels specifically outfitted with collection and separation equipment.

No Action: Appropriate when weather, sea, or other conditions make deployments unsafe and/or infeasible and when response actions or site access will cause further environmental damage (e.g., wetlands)

1.4 Sensitive Resources Addressed by GRPs

The NCP, 40 CFR Part 300.120(3)(i) requires that Area Committees identify and prioritize sensitive areas requiring protection. In the NOACP, sensitive areas are broken into three main categories described below.

Environmentally Sensitive Resources

Key natural resource areas are identified using a wide range of data provided by resource trustees, tribes, plan holders, spill response organizations, contingency plan holders, and other interested stakeholders during the process of GRP development and review. The Environmental Sensitivity Index (ESI) maps developed by NOAA are one example of the type of natural resource information available (<http://response.restoration.noaa.gov>). When appropriate, tactical response strategies are designed for implementation during the early hours of an oil spill to reduce impacts to those areas, and trajectory models or other assessment techniques are used to establish initial response priorities.

New Orleans Area Contingency Plan

Geographic Response Plan- St. Tammany Parish

Historically or Culturally Sensitive Resources

Information on sensitive historic and cultural sites is coordinated through contact with the various tribal governments, State Historic Preservation Office (SHPO), and the United States Department of the Interior may assist as needed. Due to the sensitive nature of this information, the specifics regarding the location and nature of such sites are not included in the GRP documents. However, in order to ensure that tactical response strategies do not inadvertently harm historical and culturally sensitive sites, historic preservation specialists are consulted to review the GRP documents prior to finalization. The Louisiana SHPO can be contacted at:

Physical Address: State Historic Preservation Office
Division of Archaeology
Capital Annex Building
1051 North Third Street
Baton Rouge, Louisiana 70804

Mailing Address: P.O. Box 44247
Baton Rouge LA, 70804

Phone: (225) 342-8160 (general office)
(225) 219-4598 (Division of Archaeology office)

Fax: (225) 342-4480

Socio-Economically Sensitive Resources

Economically sensitive areas are facilities or locations that rely on a body of water to be economically viable and that could be severely impacted by an oil spill. Economically sensitive areas are broken down into three separate categories: Critical infrastructure, water dependent commercial and recreational areas. Information on economic resources will be gathered for inclusion as an appendix to the GRPs.

1.5 Evaluation Criteria for GRPs

Specific strategies for response to spills in the sensitive areas are detailed in the GRPs. Below is a list of some of the biological, cultural, and booming criteria used to determine whether it is appropriate to develop and maintain GRP strategies at specific locations. These criteria are not intended to be exhaustive, or ranked in order of priority, they are meant to help frame the evaluation of GRP strategies.

Key Criteria for Biological Sites, Species, and Habitats of Concern

- *Temporal considerations-*
 - What is the expected recovery time for habitats of fish and wildlife resources?
 - What is the residence time of the oil?

New Orleans Area Contingency Plan

Geographic Response Plan- St. Tammany Parish

- *Substrate-*
 - What is the exposure risk? What is the likelihood that a habitat or species will be exposed to direct contact with surface oil or to dispersed/dissolved oil in the water column?
 - Given the substrate, is clean-up feasible?
- *Habitat quantity, quality, and pattern-*
 - Is the impacted habitat considered scarce at local, regional, or statewide scales?
 - Is the size of the impacted habitat significant compared to other sites in the region?
 - Is the species diversity or endemism high? Is this true year-round or is it seasonal?
 - Is abundance of fish and/or wildlife high? Is this true year-round or is it seasonal?
 - What life stages of organisms are present?
 - Is the habitat important to threatened or endangered species?
 - What is the status of the habitat's integrity (i.e., is the area undeveloped or highly altered?)
 - Does the habitat have a special designation or status (i.e., Marine Protected Area, biological research area, restoration site, etc.)?
 - Are the habitat and/or its associated fish and wildlife resources especially susceptible to injury by oil?

Key Criteria for Archeological and Cultural Sites of Concern

Deployment- Does the act of deploying the GRP strategy threaten the archeological site (anchoring the boom, parking vehicles, etc.)

Purpose- Will implementing the GRP strategy type (collection, diversion, deflection) negatively impact the site?

Review- If either of the above is possible, then a review of the site records is necessary to determine the exact location and sensitivity of the site. If the site records are old or insufficient, then a field visit is necessary.

Significant developments- Are there significant developments that may make any concern about the impacts irrelevant (housing developments etc.)?

Additional criteria for archaeological sites without existing GRP strategies-

- **Impacts-** Does the site extend below the high tide line?
- **Vulnerability-** Will it be damaged or destroyed if oil were to hit the area (or by the placement of response equipment in the area, e.g., vacuum trucks, etc.)?

New Orleans Area Contingency Plan

Geographic Response Plan- St. Tammany Parish

- Integrity- Has the site been disturbed yet, or is it still intact?
- Historic Importance- Is the site nominated for, or already on, the National Register of Historic Places or the State equivalent?
- Tribal Importance- Does the site hold special tribal importance?
- Parish Importance- Does the site hold special Parish importance?
- Feasibility- Is booming the site feasible?

Key Criteria for Socio-Economic Sites of Concern

Strictly economic resources are designated as the third priority for dedication of oil spill response resources, following human health and safety and environmental resources. The designation of economic resources is highly dependent upon the priorities of the local government. Each GRP contains detailed information of economic sites in each Parish or Geographical Response Area. This information includes geographic locations of resources, a brief description of the resource at risk, contact names and numbers, and the priority response ranking.

Key Criteria for the Use of Boom

Effectiveness- Is booming the most effective strategy for reducing oil spill impacts? Would other alternatives such as a phone call to an operator, shutting off a water intake, or closing a tidal gate be as effective?

Safety- Determine if safety of human responder will be put at risk for limited likelihood of strategy success.

Strategy- Determine what type of booming strategy would be the most effective at reducing oil impacts to the resource under prevailing conditions (collection, deflection, or exclusion).

Evaluation- Evaluate the site for advantageous characteristics based on:

- Anchoring substrate. Does the substrate allow responders to easily anchor the boom?
- Accessibility. Can the site be easily accessed by vessel or vehicles?
- Time to arrive on scene. How long will it take to get to the site?
- Potential for oiling. Is the site located near shipping activity or fueling operations?
- Beach substrate. Used Environmental Sensitivity Index (ESI) or Shore-Zone classification to determine vulnerability to oiling and likely oil longevity based on the shoreline type.

New Orleans Area Contingency Plan

Geographic Response Plan- St. Tammany Parish

- Type and quantity of boom. How many sections of boom and what size anchors will be required for deployment? What is the anchoring depth? What type of boom tending will be required? Will this tending be complicated by the amount of time it takes to arrive at the site or the difficulty of access? Is the amount of boom required reasonable (< 1000 ft)?
- Prevailing weather- especially wind and waves. Is a booming strategy realistic for prevailing conditions?
- Tidal influence. At extreme lows will there be nothing but mud flats (very difficult to tend boom when it is stuck in the mud) or at extreme highs will the entire face of a coastal marsh be underwater (thus exposing the entire perimeter to oil)?
- Influence of currents. What velocities can be expected?
- Feasibility. Depends on: Boom size, boom length, the number and size of anchors, the capability of the recruited workboats (to tow boom, set and recover anchors, shelter boat crews, carry boom and associated equipment), the experience of the boat crew, and the effectiveness of the anchoring system (both on shore and in water).

1.6 Prioritization

Through the priority evaluation process, an area is broken down by type (human health and safety, environmental, economic and cultural) and sensitivity (high, medium, low). This evaluation process focuses on the sensitivities of areas and not jurisdictional boundaries. Once all areas have been evaluated and broken down, three levels of priority are generally all that is needed for pre-spill planning:

A – Protect First

B – Protect After A Areas

C – Protect After B Areas

The following prioritizations were determined by the Geographic Response Plan subcommittee:

Priority A

- Public drinking water intakes

New Orleans Area Contingency Plan

Geographic Response Plan- St. Tammany Parish

- Industrial water intakes with public health and safety impacts (e.g. public utility intake, supported by state managed early warning network on MISS RIVER)
- Tidal Inlets – Primary Tidal Inlets that are protectable
- Secondary inlets inside bays that connect to extensive sensitive areas
- Breaches, wash-overs and other low areas where oil can enter sensitive habitats
- Exceptional/Highly sensitive wetlands with high biodiversity site (e.g. NWR, State refuges)
- Important Bird Areas
 - Bird nesting islands (e.g. Raccoon Island, Queen Bess Island, Brush Island)
 - Other bird nesting concentrations including T&E species
 - Seasonal bird concentration areas onshore (e.g. South Pass)
- Freshwater Diversion (Manmade and Natural)

Priority B

- Exceptional Oyster beds in the intertidal
- Seagrass Beds in less than 1 meter of water
- High use recreational sites
- Important Industrial Areas (e.g. fishing ports, marinas, industrial corridors)
- Other water intakes not specified in Priority A
- Cultural/Historical sites of concern (e.g. contact SHPO/Tribes)

Priority C

- Small tidal channels and canal openings
- Sheltered tidal flats
- Seagrass beds in greater than 1 meter of water

New Orleans Area Contingency Plan

Geographic Response Plan- St. Tammany Parish

- Aquaculture sites and oyster lease areas
- Wetland restoration areas
- Other industrial areas
- Areas identified by local authorities not previously noted in Priority A or B

The following areas were not included due to the initial protection difficulty:

- Open gulf beaches
- Exposed wetland shorelines (exposed to waves and currents) (as described in Appendix G)
- Exposed rip-rap

1.7 Strategy Selection

Booming strategy recommendations were developed using local knowledge, scientific data, and known operational uses and limitation of common oil spill response equipment. Utilizing publications, such as the Exxon Mobil Oil Spill Response Manual and the National Oceanic Atmospheric Administration's Characteristic Coastal Habitats Choosing Spill Response Alternatives) a quick reference job-aid was developed to assist with the selection of an appropriate site given the noted hydrology and climatic considerations. This process applies a consistent and standard analysis of each site.

All water body openings, cuts, and lengths between two points of land greater than one thousand feet (1,000 ft) received a strategy of Deferred Action due to limited resources available during initial response. All sites related to infrastructure or private resources received a strategy of Notification to Site Manager. However, these sites are considered sensitive and should be given due consideration for more defensive response actions by the Incident Command.

New Orleans Area Contingency Plan

Geographic Response Plan- St. Tammany Parish

GRP Strategy Selection Job-Aid

Water Body Type	Current/Wave Action	Shoreline	Strategy
Lake or Pond		ESI 1-6	Containment booming/collection point
		ESI 7-10	Exclusion booming
Rivers or Large Streams 1.6 feet (0.5) deep	Currents <1 knot	ESI 1-6	Containment booming/collection point
		ESI 7-10	Exclusion booming
	Currents 1-2 knots	ESI 1-6	Diversion booming to collection point
		ESI 7-10	Deflection booming
	Currents >2 knots	ESI 1-6	Multi-layer diversion booming to collection point
		ESI 7-10	Multi-layer deflection booming
Small streams <33 ft wide (10m) and 1.6 ft (0.5 m) deep	Currents <1 knot	ESI 1-6	Containment booming/collection point
		ESI 7-10	Exclusion booming
	Currents 1-2 knots	ESI 1-6	Diversion booming to collection point
		ESI 7-10	Deflection booming
	Currents >2 knots	ESI 1-6	Multi-layer diversion booming to collection point
		ESI 7-10	Multi-layer deflection booming
Shallow Rivers or streams	Currents 0-2 knots	ESI 1-6	Containment booming/collection point
		ESI 7-10	Diversion booming to collection point
Straight Coastline with Sensitive Areas	Breaking waves <1.5 ft (0.5m)	ESI 1-10	Diversion boom up current of sensitive area
	Breaking waves > 1.5 ft		Deferred Action
Entrance to Bays, Harbors, Lagoons, and Estuaries	Breaking waves <1.5 ft (0.5m) and currents < 1 kt (0.5 m/s)	ESI 1-10	Exclusion booming
	Breaking waves <1.5 ft (0.5m) and currents >1 kt (0.5 m/s)	ESI 1-6	Diversion booming to collection point
		ESI 7-10	Deflection booming
Breaking waves >1.5 ft (0.5m)	ESI 1-10	Deferred Action	
Narrow Channel/ Narrow Tidal Channel	Current <1 kt (0.5 m/s)	ESI 1-10	Exclusion Booming
	Current >1 kt (0.5 m/s)	ESI 1-6	Diversion booming with collection point
		ESI 7-10	Deflection booming
Open Water	Breaking Waves < 1.5 ft	N/A	Exclusion Booming
	Breaking waves >1.5 ft		Deferred Action

New Orleans Area Contingency Plan

Geographic Response Plan- St. Tammany Parish

2 Site Description

St. Tammany Parish is located on the North Shore of Lake Pontchartrain. The Parish has a total area of 1,124 square miles, of which 850 square miles is land and 279 square miles is water.

This Index is broken up into 7 maps listed below.

- MADISONVILLE
- COVINGTON SW
- MANDEVILLE
- LACOMBE
- NORTH SHORE
- RIGOLETS
- ENGLISH LOOKOUT

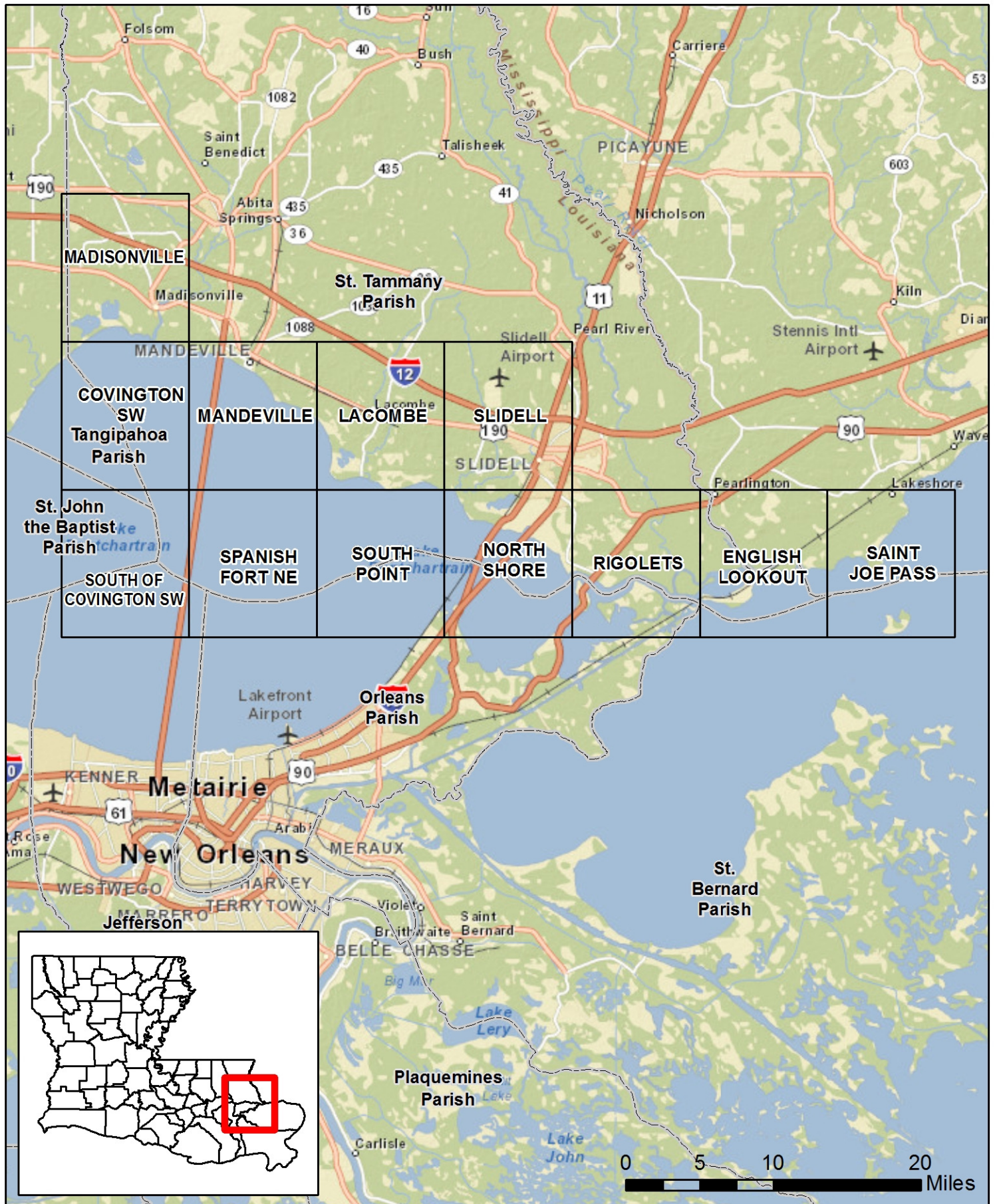
3 Maps

The following pages contain the above mentioned maps and the associated sensitive sites and recommended response strategies.



Sector New Orleans GRP

St. Tammany Parish Index Map



New Orleans Area Contingency Plan

Geographic Response Plan- St. Tammany Parish

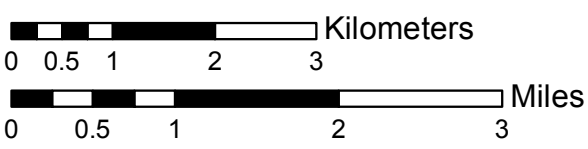
This page is intentionally left blank

MADISONVILLE Quad



Legend

- GRP Sites
- Quad Boundary
- ▭ Parish Boundaries



Locator Map

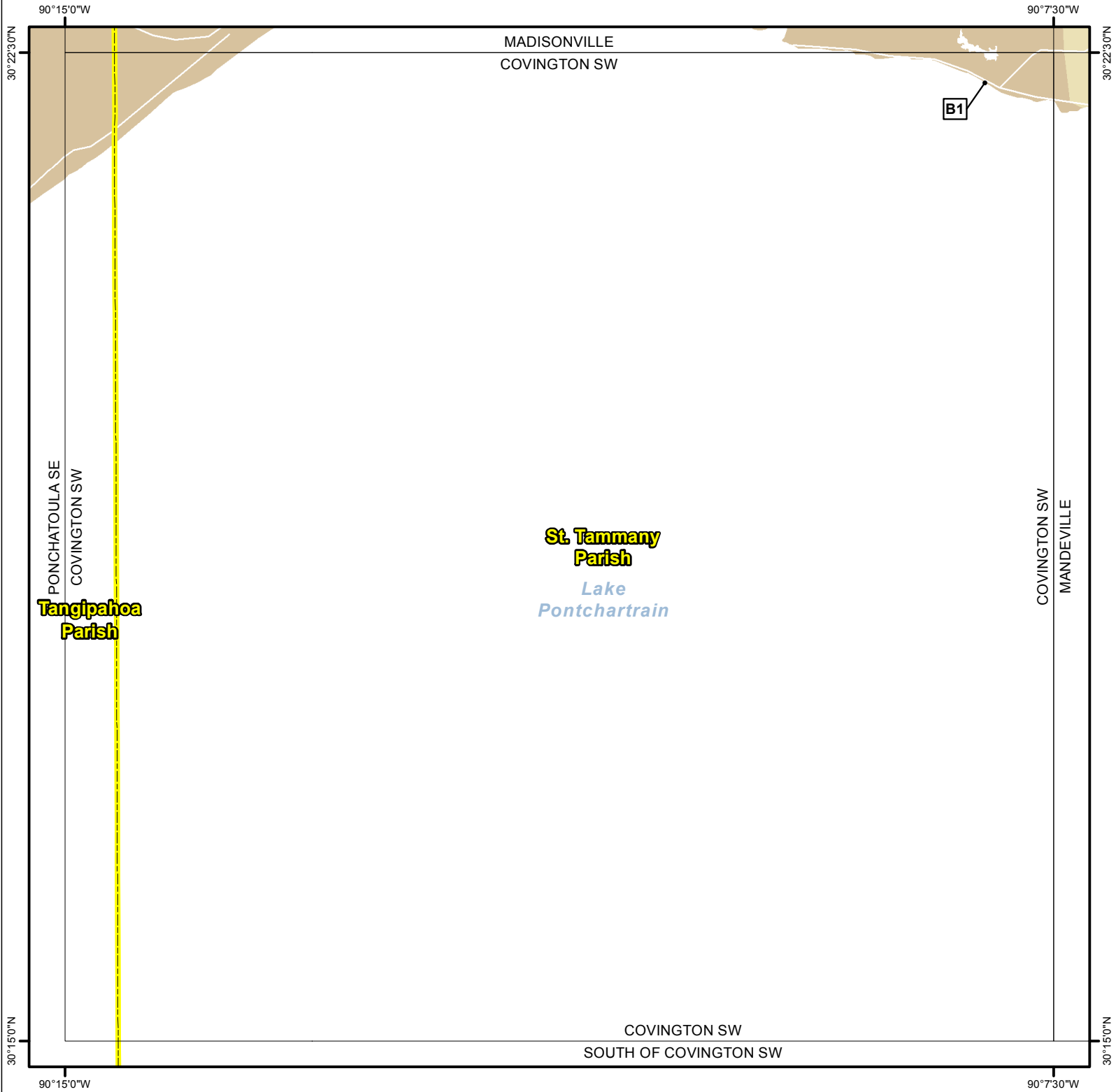
Site Information: A1		Location Information	
Name:	Unnamed Wash Over Site	Parish:	St. Tammany
Priority:	A	Quad Name:	Madisonville
Site Alias:	None	Quad Number:	3009039
Site Description: Wash Over		Mile Marker:	N/A
		Managed (Y/N)?:	
		Latitude:	30° 23' 11.269" N
		Longitude:	90° 12' 36.143" W
Response Considerations			
Site Strategy:	Deflection Booming	Site Strategy Comments:	
Site Waterbody Type:	Narrow Tidal Channel		
Current Wave Action:	Current >1 kt		
Waterbody Opening:	< 500 ft		
Resources At Risk			
ESI Code:	10D	Resources At Risk Comments:	
		None	
Contact Information			
Contact:		Special Contact:	
Site Statistics			
Submitted By: Paul Carroll		Submit Date: 5/1/2012	

Site Information: B1		Location Information	
Name:	Madisonville Lighthouse	Parish:	St. Tammany
Priority:	B	Quad Name:	Madisonville
Site Alias:	None	Quad Number:	3009039
Site Description: Historical Site		Mile Marker:	
		Managed (Y/N)?:	
		Latitude:	30° 22' 40.821" N
		Longitude:	90° 9' 49.040" W
Response Considerations			
Site Strategy:	Notification to Site Manager	Site Strategy Comments:	
Site Waterbody Type:	Straight Coastline		
Current Wave Action:	Breaking Waves >1.5 ft		
Waterbody Opening:	Not Applicable		
Resources At Risk			
ESI Code:	10B	Resources At Risk Comments:	
		None	
Contact Information			
Contact:		Special Contact:	
Site Statistics			
Submitted By: LDWF		Submit Date: 5/1/2012	

Site Information: B2		Location Information	
Name:	Tchefuncte River	Parish:	St. Tammany
Priority:	B	Quad Name:	Madisonville
Site Alias:	None	Quad Number:	3009039
Site Description:		Mile Marker:	
		Managed (Y/N)?:	
		Latitude:	30° 22' 38.893" N
		Longitude:	90° 9' 36.191" W
Response Considerations			
Site Strategy:	Multi-Layer Deflection Booming	Site Strategy Comments:	
Site Waterbody Type:	Rivers or Large Streams		
Current Wave Action:	Currents >2 kts		
Waterbody Opening:	500-1000 ft		
Resources At Risk			
ESI Code:		Resources At Risk Comments:	
Contact Information			
Contact:		Special Contact:	
Site Statistics			
Submitted By:	Dr DeEtte Smythe / T-1340:LDWF	Submit Date:	20120501

Site Information: C1		Location Information	
Name:	Port Louis	Parish:	St. Tammany
Priority:	C	Quad Name:	Madisonville
Site Alias:	None	Quad Number:	3009039
Site Description:		Mile Marker:	
		Managed (Y/N)?:	
		Latitude:	30° 23' 0.388" N
		Longitude:	90° 12' 53.420" W
Response Considerations			
Site Strategy:	Deferred Action	Site Strategy Comments:	
Site Waterbody Type:	Entrance to Bays, etc		
Current Wave Action:	Breaking Waves >1.5 ft		
Waterbody Opening:	< 500 ft		
Resources At Risk			
ESI Code:		Resources At Risk Comments:	
Contact Information			
Contact:		Special Contact:	
Site Statistics			
Submitted By:	Paul Carroll	Submit Date:	20120501

COVINGTON SW Quad



Legend

- GRP Sites
- Quad Boundary
- ▭ Parish Boundaries



0 0.5 1 2 3 Kilometers

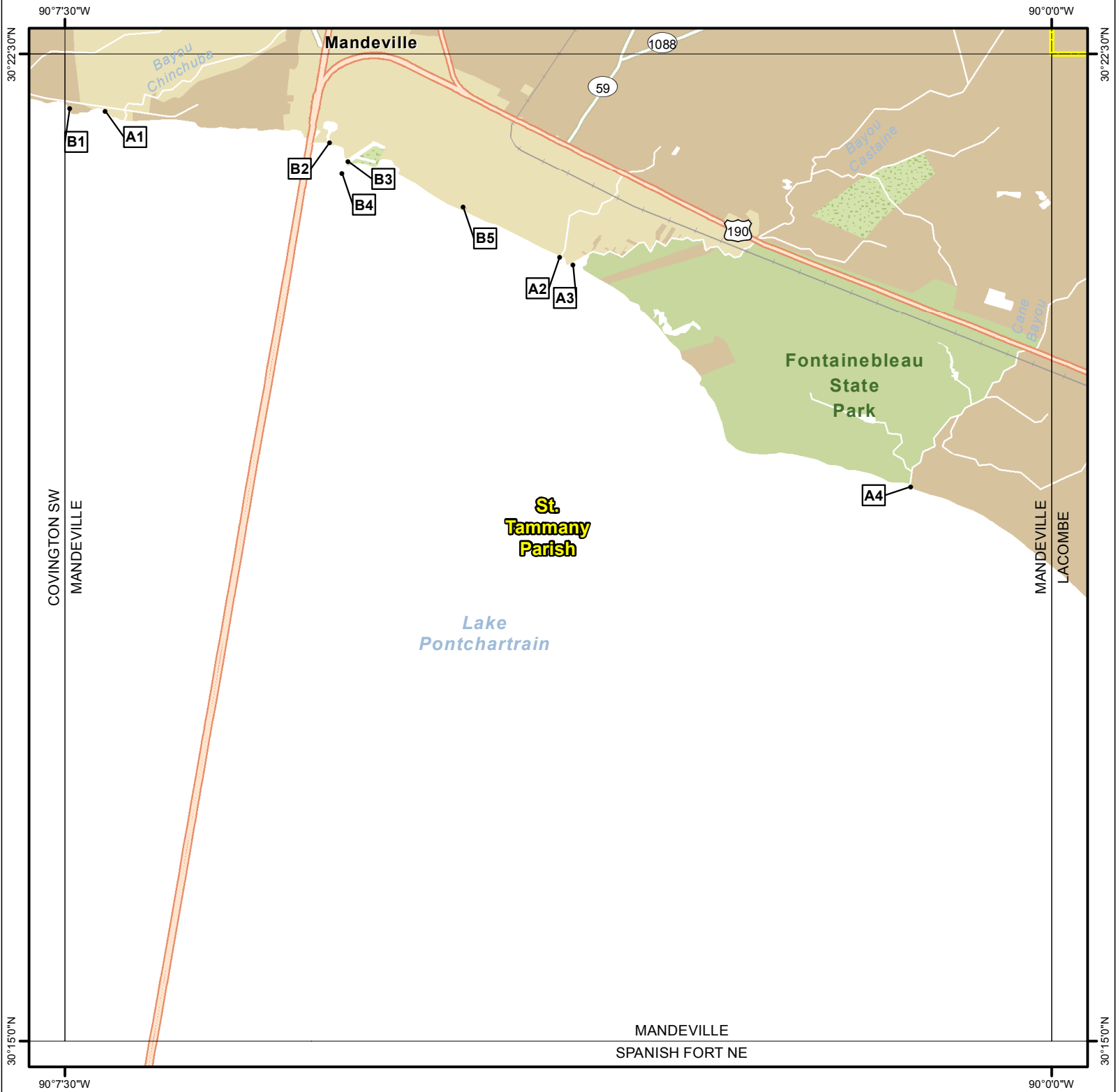
0 0.5 1 2 3 Miles



Locator Map

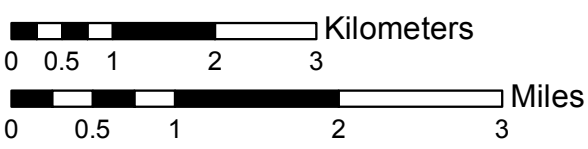
Site Information: B1		Location Information	
Name:	Unnamed Tidal Inlets	Parish:	St. Tammany
Priority:	B	Quad Name:	Covington SW
Site Alias:	None	Quad Number:	3009047
Site Description: Numerous Inlets		Mile Marker:	
		Managed (Y/N)?:	
		Latitude:	30° 22' 16.207" N
		Longitude:	90° 8' 1.225" W
Response Considerations			
Site Strategy:	Deferred Action	Site Strategy Comments:	
Site Waterbody Type:	Entrance to Bays, etc		
Current Wave Action:	Breaking Waves >1.5 ft		
Waterbody Opening:	< 500 ft		
Resources At Risk			
ESI Code:	10D	Resources At Risk Comments:	
		None	
Contact Information			
Contact:		Special Contact:	
Site Statistics			
Submitted By: LDWF		Submit Date: 5/1/2012	

MANDEVILLE Quad



Legend

- GRP Sites
- Quad Boundary
- ▭ Parish Boundaries



Site Information: A1		Location Information	
Name:	Bayou Chinchuba	Parish:	St. Tammany
Priority:	A	Quad Name:	Mandeville
Site Alias:	None	Quad Number:	3009048
Site Description: Bayou to Sensitive Habitat		Mile Marker:	N/A
		Managed (Y/N)?:	
		Latitude:	30° 22' 4.044" N
		Longitude:	90° 7' 11.678" W
Response Considerations			
Site Strategy:	Exclusion Booming	Site Strategy Comments:	
Site Waterbody Type:	Narrow Tidal Channel		
Current Wave Action:	Currents <1 kt		
Waterbody Opening:	< 500 ft		
Resources At Risk			
ESI Code:	10D	Resources At Risk Comments:	
		None	
Contact Information			
Contact:		Special Contact:	
Site Statistics			
Submitted By: Dr DeEtte Smythe		Submit Date: 5/1/2012	

Site Information: A2		Location Information	
Name:	Little Bayou Castine	Parish:	St. Tammany
Priority:	A	Quad Name:	Mandeville
Site Alias:	None	Quad Number:	3009048
Site Description: Bayou to Sensitive Habitat		Mile Marker:	N/A
		Managed (Y/N)?:	
		Latitude:	30° 20' 57.461" N
		Longitude:	90° 3' 44.336" W
Response Considerations			
Site Strategy:	Exclusion Booming	Site Strategy Comments:	
Site Waterbody Type:	Narrow Tidal Channel		
Current Wave Action:	Currents <1 kt		
Waterbody Opening:	< 500 ft		
Resources At Risk			
ESI Code:	10C	Resources At Risk Comments:	
		None	
Contact Information			
Contact:		Special Contact:	
Site Statistics			
Submitted By: Paul Carroll		Submit Date: 5/1/2012	

Site Information: A3		Location Information	
Name:	Bayou Castine	Parish:	St. Tammany
Priority:	A	Quad Name:	Mandeville
Site Alias:	None	Quad Number:	3009048
Site Description: Bayou to Sensitive Habitat		Mile Marker:	N/A
		Managed (Y/N)?:	
		Latitude:	30° 20' 54.027" N
		Longitude:	90° 3' 38.176" W
Response Considerations			
Site Strategy:	Exclusion Booming	Site Strategy Comments:	
Site Waterbody Type:	Narrow Tidal Channel		
Current Wave Action:	Currents <1 kt		
Waterbody Opening:	< 500 ft		
Resources At Risk			
ESI Code:	10D	Resources At Risk Comments:	
		None	
Contact Information			
Contact:		Special Contact:	
Site Statistics			
Submitted By: Dr DeEtte Smythe		Submit Date: 5/1/2012	

Site Information: A4		Location Information	
Name:	Cane Bayou	Parish:	St. Tammany
Priority:	A	Quad Name:	Mandeville
Site Alias:	None	Quad Number:	3009048
Site Description: Bayou to Sensitive Habitat		Mile Marker:	N/A
		Managed (Y/N)?:	
		Latitude:	30° 19' 12.650" N
		Longitude:	90° 1' 4.213" W
Response Considerations			
Site Strategy:	Exclusion Booming	Site Strategy Comments:	
Site Waterbody Type:	Narrow Tidal Channel		
Current Wave Action:	Currents <1 kt		
Waterbody Opening:	< 500 ft		
Resources At Risk			
ESI Code:	10A	Resources At Risk Comments:	
		None	
Contact Information			
Contact:		Special Contact:	
Site Statistics			
Submitted By:	Paul Carroll	Submit Date: 5/1/2012	

Site Information: B1		Location Information	
Name:	Unnamed Tidal Inlets	Parish:	St. Tammany
Priority:	B	Quad Name:	Mandeville
Site Alias:	None	Quad Number:	3009048
Site Description: Numerous Inlets		Mile Marker:	
		Managed (Y/N)?:	
		Latitude:	30° 22' 5.105" N
		Longitude:	90° 7' 27.714" W
Response Considerations			
Site Strategy:	Deferred Action	Site Strategy Comments:	
Site Waterbody Type:	Entrance to Bays, etc		
Current Wave Action:	Breaking Waves >1.5 ft		
Waterbody Opening:	< 500 ft		
Resources At Risk			
ESI Code:	10A	Resources At Risk Comments:	
		None	
Contact Information			
Contact:		Special Contact:	
Site Statistics			
Submitted By: LDWF		Submit Date: 5/1/2012	

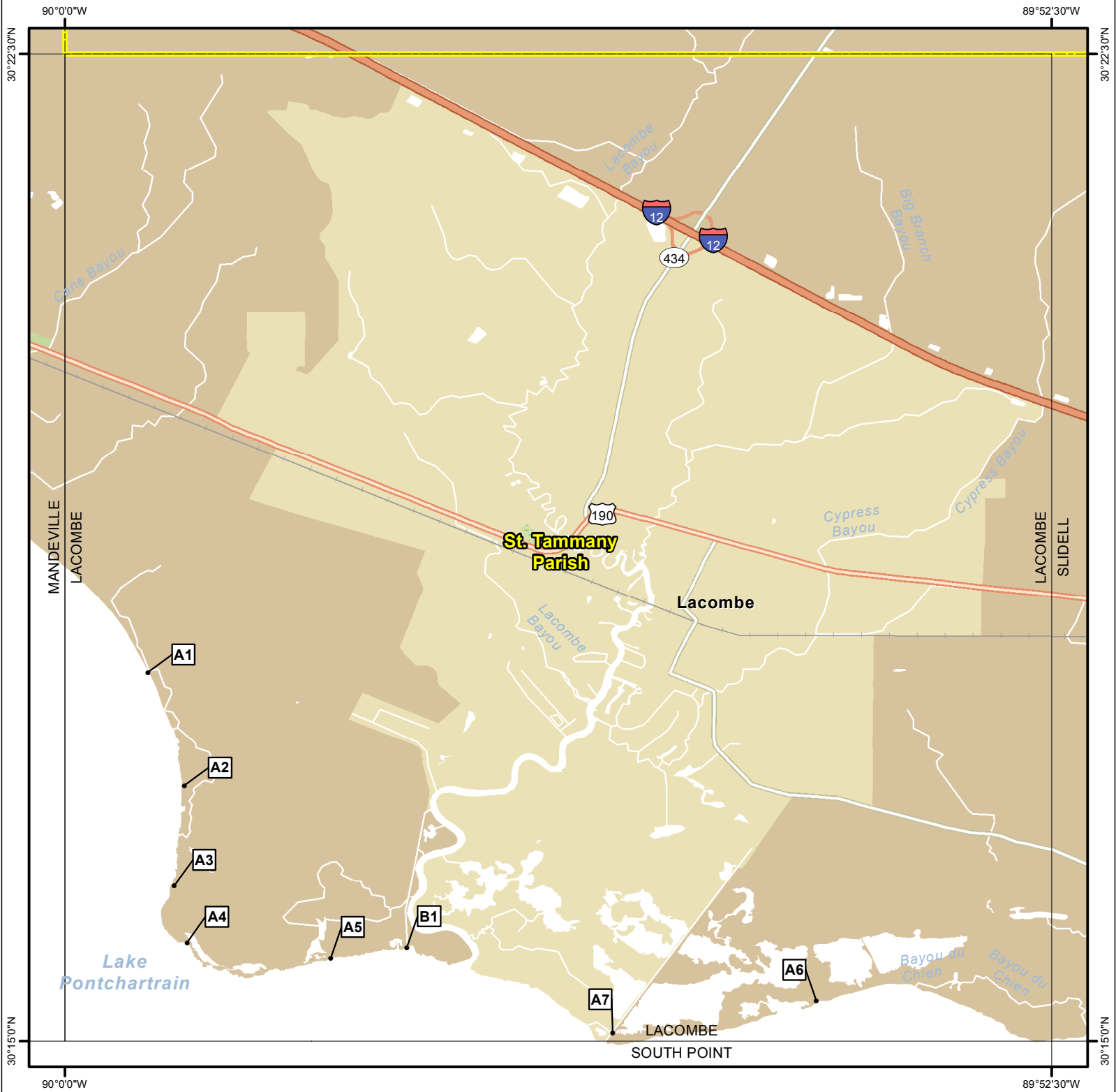
Site Information: B2		Location Information	
Name:	Lake Pontchartrain Marina	Parish:	St. Tammany
Priority:	B	Quad Name:	Mandeville
Site Alias:	None	Quad Number:	3009048
Site Description: Marina		Mile Marker:	
		Managed (Y/N)?:	
		Latitude:	30° 21' 49.547" N
		Longitude:	90° 5' 29.226" W
Response Considerations			
Site Strategy:	Notification to Site Manager	Site Strategy Comments:	
Site Waterbody Type:	Entrance to Bays, etc		
Current Wave Action:	Breaking Waves >1.5 ft		
Waterbody Opening:	< 500 ft		
Resources At Risk			
ESI Code:		Resources At Risk Comments:	
		None	
Contact Information			
Contact:		Special Contact:	
Site Statistics			
Submitted By:	LDWF	Submit Date: 5/1/2012	

Site Information: B3		Location Information	
Name:	Pre-Stress Canal	Parish:	St. Tammany
Priority:	B	Quad Name:	Mandeville
Site Alias:	None	Quad Number:	3009048
Site Description: Wildlife Protection Area		Mile Marker:	
		Managed (Y/N)?:	
		Latitude:	30° 21' 41.155" N
		Longitude:	90° 5' 20.907" W
Response Considerations			
Site Strategy:	Exclusion Booming	Site Strategy Comments:	
Site Waterbody Type:	Narrow Tidal Channel		
Current Wave Action:	Currents <1 kt		
Waterbody Opening:	< 500 ft		
Resources At Risk			
ESI Code:		Resources At Risk Comments:	
		None	
Contact Information			
Contact:		Special Contact:	
Site Statistics			
Submitted By:	LDWF	Submit Date:	5/1/2012

Site Information: B4		Location Information	
Name:	Sunset Point	Parish:	St. Tammany
Priority:	B	Quad Name:	Mandeville
Site Alias:	None	Quad Number:	3009048
Site Description: High Use Recreation Area		Mile Marker:	
		Managed (Y/N)?:	
		Latitude:	30° 21' 35.609" N
		Longitude:	90° 5' 23.680" W
Response Considerations			
Site Strategy:	Notification to Site Manager	Site Strategy Comments:	
Site Waterbody Type:	Open Water		
Current Wave Action:	Breaking Waves >1.5 ft		
Waterbody Opening:	Not Applicable		
Resources At Risk			
ESI Code:		Resources At Risk Comments:	
		None	
Contact Information			
Contact:		Special Contact:	
Site Statistics			
Submitted By:	LDWF	Submit Date: 5/1/2012	

Site Information: B5		Location Information	
Name:	Lakeshore Drive Drainage Canal	Parish:	St. Tammany
Priority:	B	Quad Name:	Mandeville
Site Alias:	None	Quad Number:	3009048
Site Description: Sensitive Habitat		Mile Marker:	
		Managed (Y/N)?:	
		Latitude:	30° 21' 20.283" N
		Longitude:	90° 4' 28.363" W
Response Considerations			
Site Strategy:	Exclusion Booming	Site Strategy Comments:	
Site Waterbody Type:	Narrow Tidal Channel		
Current Wave Action:	Currents <1 kt		
Waterbody Opening:	< 500 ft		
Resources At Risk			
ESI Code:		Resources At Risk Comments:	
		None	
Contact Information			
Contact:		Special Contact:	
Site Statistics			
Submitted By:	LDWF	Submit Date:	5/1/2012

LACOMBE Quad



Legend

- GRP Sites
- Quad Boundary
- ▭ Parish Boundaries



0 0.5 1 2 3 Kilometers

0 0.5 1 2 3 Miles



Site Information: A1		Location Information	
Name:	Small Tidal Inlets	Parish:	St. Tammany
Priority:	A	Quad Name:	Lacombe
Site Alias:	None	Quad Number:	3008941
Site Description: Small Tidal Inlets		Mile Marker:	N/A
		Managed (Y/N)?:	
		Latitude:	30° 17' 48.126" N
		Longitude:	89° 59' 22.154" W
Response Considerations			
Site Strategy:	Exclusion Booming	Site Strategy Comments:	
Site Waterbody Type:	Narrow Tidal Channel		
Current Wave Action:	Currents <1 kt		
Waterbody Opening:	< 500 ft		
Resources At Risk			
ESI Code:	10A	Resources At Risk Comments:	
		None	
Contact Information			
Contact:	USFWS	Special Contact:	985-882-2000
Site Statistics			
Submitted By:	Brain Fortson	Submit Date:	5/1/2012

Site Information: A2		Location Information	
Name:	Small Tidal Inlets	Parish:	St. Tammany
Priority:	A	Quad Name:	Lacombe
Site Alias:	None	Quad Number:	3008941
Site Description: Small Tidal Inlets		Mile Marker:	N/A
		Managed (Y/N)?:	
		Latitude:	30° 16' 56.730" N
		Longitude:	89° 59' 5.365" W
Response Considerations			
Site Strategy:	Exclusion Booming	Site Strategy Comments:	
Site Waterbody Type:	Narrow Tidal Channel		
Current Wave Action:	Currents <1 kt		
Waterbody Opening:	< 500 ft		
Resources At Risk			
ESI Code:	10A	Resources At Risk Comments:	
		None	
Contact Information			
Contact:	USFWS	Special Contact:	985-882-2000
Site Statistics			
Submitted By:	Brain Fortson	Submit Date:	5/1/2012

Site Information: A3		Location Information	
Name:	Small Tidal Inlets	Parish:	St. Tammany
Priority:	A	Quad Name:	Lacombe
Site Alias:	None	Quad Number:	3008941
Site Description: Small Tidal Inlets		Mile Marker:	N/A
		Managed (Y/N)?:	
		Latitude:	30° 16' 10.816" N
		Longitude:	89° 59' 10.162" W
Response Considerations			
Site Strategy:	Exclusion Booming	Site Strategy Comments:	
Site Waterbody Type:	Narrow Tidal Channel		
Current Wave Action:	Currents <1 kt		
Waterbody Opening:	< 500 ft		
Resources At Risk			
ESI Code:	10A	Resources At Risk Comments:	
		None	
Contact Information			
Contact:	USFWS	Special Contact:	985-882-2000
Site Statistics			
Submitted By:	Brain Fortson	Submit Date:	5/1/2012

Site Information: A4		Location Information	
Name:	Goose Point	Parish:	St. Tammany
Priority:	A	Quad Name:	Lacombe
Site Alias:	None	Quad Number:	3008941
Site Description: Tidal Inlet to Wildlife Protection Area		Mile Marker:	
		Managed (Y/N)?:	
		Latitude:	30° 15' 45.116" N
		Longitude:	89° 59' 4.366" W
Response Considerations			
Site Strategy:	Diversion Booming to Collection Point	Site Strategy Comments:	
Site Waterbody Type:	Narrow Tidal Channel		
Current Wave Action:	Current >1 kt		
Waterbody Opening:	< 500 ft		
Resources At Risk			
ESI Code:	10A	Resources At Risk Comments:	
		None	
Contact Information			
Contact:	USFWS	Special Contact:	985-882-2000
Site Statistics			
Submitted By:	LDWF	Submit Date:	5/1/2012

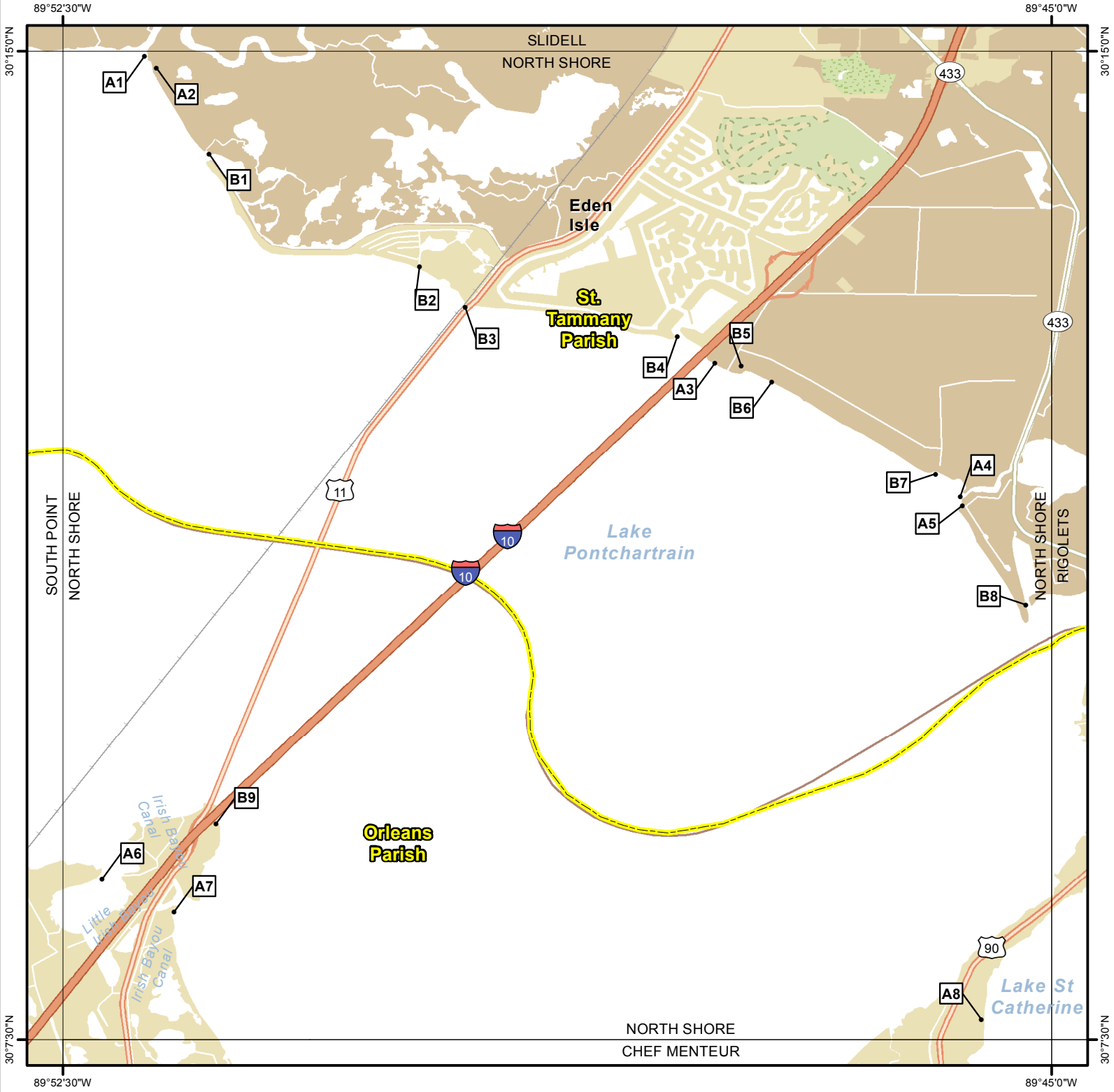
Site Information: A5		Location Information	
Name:	Barringer Lagoon	Parish:	St. Tammany
Priority:	A	Quad Name:	Lacombe
Site Alias:	None	Quad Number:	3008941
Site Description: Wildlife Protection Area		Mile Marker:	
		Managed (Y/N)?:	
		Latitude:	30° 15' 37.858" N
		Longitude:	89° 57' 58.813" W
Response Considerations			
Site Strategy:	Deflection Booming	Site Strategy Comments:	
Site Waterbody Type:	Narrow Tidal Channel		
Current Wave Action:	Current >1 kt		
Waterbody Opening:	< 500 ft		
Resources At Risk			
ESI Code:	10A	Resources At Risk Comments:	
		None	
Contact Information			
Contact:	USFWS	Special Contact:	985-882-2000
Site Statistics			
Submitted By:	LDWF	Submit Date:	5/1/2012

Site Information: A6		Location Information	
Name:	Big Branch National Wildlife Refuge	Parish:	St. Tammany
Priority:	A	Quad Name:	Lacombe
Site Alias:	None	Quad Number:	3008941
Site Description: Wildlife Protection Area		Mile Marker:	
		Managed (Y/N)?:	
		Latitude:	30° 15' 18.473" N
		Longitude:	89° 54' 17.257" W
Response Considerations			
Site Strategy:	Deflection Booming	Site Strategy Comments:	
Site Waterbody Type:	Narrow Tidal Channel		
Current Wave Action:	Current >1 kt		
Waterbody Opening:	< 500 ft		
Resources At Risk			
ESI Code:	10A	Resources At Risk Comments:	
		None	
Contact Information			
Contact:	USFWS	Special Contact:	985-882-2000
Site Statistics			
Submitted By:	LDWF	Submit Date:	5/1/2012

Site Information: A7		Location Information	
Name:	Engineers Canal	Parish:	St. Tammany
Priority:	A	Quad Name:	Lacombe
Site Alias:	None	Quad Number:	3008941
Site Description: Wildlife Protection Area		Mile Marker:	
		Managed (Y/N)?:	
		Latitude:	30° 15' 4.042" N
		Longitude:	89° 55' 50.160" W
Response Considerations			
Site Strategy:	Exclusion Booming	Site Strategy Comments:	
Site Waterbody Type:	Narrow Tidal Channel		
Current Wave Action:	Currents <1 kt		
Waterbody Opening:	< 500 ft		
Resources At Risk			
ESI Code:	10A	Resources At Risk Comments:	
		None	
Contact Information			
Contact:	USFWS	Special Contact:	985-882-2000
Site Statistics			
Submitted By:	LDWF	Submit Date:	5/1/2012

Site Information: B1		Location Information	
Name:	Lake Road Canal	Parish:	St. Tammany
Priority:	B	Quad Name:	Lacombe
Site Alias:	None	Quad Number:	3008941
Site Description: High Use Recreation Area		Mile Marker:	
		Managed (Y/N)?:	
		Latitude:	30° 15' 42.793" N
		Longitude:	89° 57' 23.966" W
Response Considerations			
Site Strategy:	Exclusion Booming	Site Strategy Comments:	
Site Waterbody Type:	Narrow Tidal Channel		
Current Wave Action:	Currents <1 kt		
Waterbody Opening:	< 500 ft		
Resources At Risk			
ESI Code:	10A	Resources At Risk Comments:	
		None	
Contact Information			
Contact:	USFWS	Special Contact:	985-882-2000
Site Statistics			
Submitted By:	LDWF	Submit Date:	5/1/2012

NORTH SHORE Quad



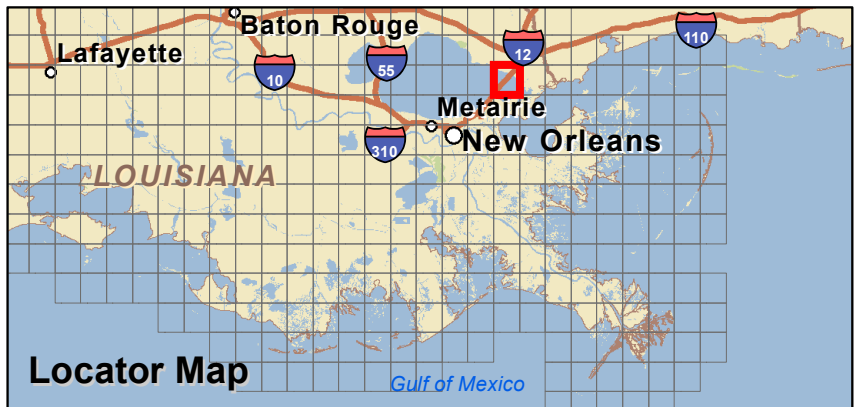
Legend

- GRP Sites
- ▭ Quad Boundary
- ▭ Parish Boundaries



0 0.5 1 2 3 Kilometers

0 0.5 1 2 3 Miles



Locator Map

Site Information: A1		Location Information	
Name:	Bayou Bonfouca	Parish:	St. Tammany
Priority:	A	Quad Name:	North Shore
Site Alias:	None	Quad Number:	3008950
Site Description: Sensitive habitat		Mile Marker:	
		Managed (Y/N)?:	
		Latitude:	30° 14' 57.667" N
		Longitude:	89° 51' 52.751" W
Response Considerations			
Site Strategy:	Deflection Booming	Site Strategy Comments:	
Site Waterbody Type:	Narrow Tidal Channel		
Current Wave Action:	Current >1 kt		
Waterbody Opening:	< 500 ft		
Resources At Risk			
ESI Code:	10A	Resources At Risk Comments:	
		None	
Contact Information			
Contact:	USFWS	Special Contact:	985-882-2000
Site Statistics			
Submitted By:	LDWF	Submit Date:	5/1/2012

Site Information: A2		Location Information	
Name:	Bayou Bonfuca	Parish:	St. Tammany
Priority:	A	Quad Name:	North Shore
Site Alias:	None	Quad Number:	3008950
Site Description: Bayou to Sensitive Habitat		Mile Marker:	N/A
		Managed (Y/N)?:	
		Latitude:	30° 14' 52.351" N
		Longitude:	89° 51' 47.468" W
Response Considerations			
Site Strategy:	Deferred Action	Site Strategy Comments:	
Site Waterbody Type:	Entrance to Bays, etc		
Current Wave Action:	Breaking Waves >1.5 ft		
Waterbody Opening:	< 500 ft		
Resources At Risk			
ESI Code:	10A	Resources At Risk Comments:	
		None	
Contact Information			
Contact:	USFWS	Special Contact:	985-882-2000
Site Statistics			
Submitted By:	Dr DeEtte Smythe	Submit Date:	5/1/2012

Site Information: A3		Location Information	
Name:	Lakeshore Pump Station	Parish:	St. Tammany
Priority:	A	Quad Name:	North Shore
Site Alias:	None	Quad Number:	3008950
Site Description: pump station		Mile Marker:	N/A
		Managed (Y/N)?:	
		Latitude:	30° 12' 38.035" N
		Longitude:	89° 47' 33.227" W
Response Considerations			
Site Strategy:	Notification to Site Manager	Site Strategy Comments:	
Site Waterbody Type:	Straight Coastline		
Current Wave Action:	Breaking Waves <1.5 ft		
Waterbody Opening:	Not Applicable		
Resources At Risk			
ESI Code:	10D	Resources At Risk Comments:	
		None	
Contact Information			
Contact:		Special Contact:	
Site Statistics			
Submitted By: Brian Fortson		Submit Date: 5/1/2012	

Site Information: A4		Location Information	
Name:	Canal by Salt Bayou	Parish:	St. Tammany
Priority:	A	Quad Name:	North Shore
Site Alias:	None	Quad Number:	3008950
Site Description: Sensitive wildlife area		Mile Marker:	
		Managed (Y/N)?:	
		Latitude:	30° 11' 37.368" N
		Longitude:	89° 45' 41.465" W
Response Considerations			
Site Strategy:	Deflection Booming	Site Strategy Comments:	
Site Waterbody Type:	Narrow Tidal Channel		
Current Wave Action:	Current >1 kt		
Waterbody Opening:	< 500 ft		
Resources At Risk			
ESI Code:	10C	Resources At Risk Comments:	
		None	
Contact Information			
Contact:		Special Contact:	
Site Statistics			
Submitted By: LDWF		Submit Date: 5/1/2012	

Site Information: A5		Location Information	
Name:	Salt Bayou	Parish:	St. Tammany
Priority:	A	Quad Name:	North Shore
Site Alias:	Mouth of Salt Bayou	Quad Number:	3008950
Site Description: Sensitive wildlife area		Mile Marker:	
		Managed (Y/N)?:	
		Latitude:	30° 11' 33.192" N
		Longitude:	89° 45' 40.502" W
Response Considerations			
Site Strategy:	Deflection Booming	Site Strategy Comments:	
Site Waterbody Type:	Narrow Tidal Channel		
Current Wave Action:	Current >1 kt		
Waterbody Opening:	< 500 ft		
Resources At Risk			
ESI Code:	10A	Resources At Risk Comments:	
		None	
Contact Information			
Contact:		Special Contact:	
Site Statistics			
Submitted By: LDWF		Submit Date: 5/1/2012	

Site Information: A6		Location Information	
Name:	Irish Bayou Lounge	Parish:	Orleans
Priority:	A	Quad Name:	North Shore
Site Alias:	None	Quad Number:	3008950
Site Description: Wash over		Mile Marker:	
		Managed (Y/N)?:	
		Latitude:	30° 8' 43.166" N
		Longitude:	89° 52' 12.152" W
Response Considerations			
Site Strategy:	Deferred Action	Site Strategy Comments:	
Site Waterbody Type:	Entrance to Bays, etc		
Current Wave Action:	Breaking Waves <1.5 ft and Currents >1 kt		
Waterbody Opening:	1000-1500 ft		
Resources At Risk			
ESI Code:	10A	Resources At Risk Comments:	
		None	
Contact Information			
Contact:		Special Contact:	
Site Statistics			
Submitted By: Paul Reeb		Submit Date: 4/30/2012	

Site Information: A7		Location Information	
Name:	Bayou Sauvage National Wildlife Refuge	Parish:	Orleans
Priority:	A	Quad Name:	North Shore
Site Alias:	None	Quad Number:	3008950
Site Description: Various Tidal Inlets/Washovers		Mile Marker:	
		Managed (Y/N)?:	Yes
		Latitude:	30° 8' 28.135" N
		Longitude:	89° 51' 39.308" W
Response Considerations			
Site Strategy:	Deflection Booming	Site Strategy Comments:	
Site Waterbody Type:	Narrow Tidal Channel		
Current Wave Action:	Current >1 kt		
Waterbody Opening:	< 500 ft		
Resources At Risk			
ESI Code:	10A	Resources At Risk Comments:	
		None	
Contact Information			
Contact:	USFWS	Special Contact:	
Site Statistics			
Submitted By:	LDWF	Submit Date: 4/30/2012	

Site Information: A8		Location Information	
Name:	Unnamed inlets	Parish:	Orleans
Priority:	A	Quad Name:	North Shore
Site Alias:	None	Quad Number:	3008950
Site Description:		Mile Marker:	
		Managed (Y/N)?:	
		Latitude:	30° 7' 39.338" N
		Longitude:	89° 45' 31.989" W
Response Considerations			
Site Strategy:	Diversion Booming to Collection Point	Site Strategy Comments:	
Site Waterbody Type:	Straight Coastline		
Current Wave Action:	Breaking Waves <1.5 ft		
Waterbody Opening:	Not Applicable		
Resources At Risk			
ESI Code:		Resources At Risk Comments:	
Contact Information			
Contact:		Special Contact:	
Site Statistics			
Submitted By:	LDWF	Submit Date: 20120430	

Site Information: B1		Location Information	
Name:	Carr Drive Canal	Parish:	St. Tammany
Priority:	B	Quad Name:	North Shore
Site Alias:	None	Quad Number:	3008950
Site Description: Sensitive habitat		Mile Marker:	
		Managed (Y/N)?:	
		Latitude:	30° 14' 13.273" N
		Longitude:	89° 51' 23.604" W
Response Considerations			
Site Strategy:	Deferred Action	Site Strategy Comments:	
Site Waterbody Type:	Entrance to Bays, etc		
Current Wave Action:	Breaking Waves >1.5 ft		
Waterbody Opening:	500-1000 ft		
Resources At Risk			
ESI Code:	10A	Resources At Risk Comments:	
		None	
Contact Information			
Contact:		Special Contact:	
Site Statistics			
Submitted By: LDWF		Submit Date: 5/1/2012	

Site Information: B2		Location Information	
Name:	Debbie Drive Canal	Parish:	St. Tammany
Priority:	B	Quad Name:	North Shore
Site Alias:	None	Quad Number:	3008950
Site Description: Sensitive habitat		Mile Marker:	
		Managed (Y/N)?:	
		Latitude:	30° 13' 21.894" N
		Longitude:	89° 49' 47.710" W
Response Considerations			
Site Strategy:	Deferred Action	Site Strategy Comments:	
Site Waterbody Type:	Entrance to Bays, etc		
Current Wave Action:	Breaking Waves >1.5 ft		
Waterbody Opening:	< 500 ft		
Resources At Risk			
ESI Code:	10A	Resources At Risk Comments:	
		None	
Contact Information			
Contact:		Special Contact:	
Site Statistics			
Submitted By: LDWF		Submit Date: 5/1/2012	

Site Information: B3		Location Information	
Name:	Carr Drive Canal	Parish:	St. Tammany
Priority:	B	Quad Name:	North Shore
Site Alias:	None	Quad Number:	3008950
Site Description: Sensitive habitat		Mile Marker:	
		Managed (Y/N)?:	
		Latitude:	30° 13' 3.446" N
		Longitude:	89° 49' 26.980" W
Response Considerations			
Site Strategy:	Deferred Action	Site Strategy Comments:	
Site Waterbody Type:	Entrance to Bays, etc		
Current Wave Action:	Breaking Waves >1.5 ft		
Waterbody Opening:	< 500 ft		
Resources At Risk			
ESI Code:	10A	Resources At Risk Comments:	
		None	
Contact Information			
Contact:		Special Contact:	
Site Statistics			
Submitted By: LDWF		Submit Date: 5/1/2012	

Site Information: B4		Location Information	
Name:	Oak Harbor/ Eden Isles	Parish:	St. Tammany
Priority:	B	Quad Name:	North Shore
Site Alias:	None	Quad Number:	3008950
Site Description: Sensitive habitat		Mile Marker:	
		Managed (Y/N)?:	
		Latitude:	30° 12' 50.244" N
		Longitude:	89° 47' 50.470" W
Response Considerations			
Site Strategy:	Deferred Action	Site Strategy Comments:	
Site Waterbody Type:	Entrance to Bays, etc		
Current Wave Action:	Breaking Waves >1.5 ft		
Waterbody Opening:	< 500 ft		
Resources At Risk			
ESI Code:		Resources At Risk Comments:	
		None	
Contact Information			
Contact:		Special Contact:	
Site Statistics			
Submitted By:	LDWF	Submit Date: 5/1/2012	

Site Information: B5		Location Information	
Name: Lakeshore Marina		Parish: St. Tammany	
Priority: B		Quad Name: North Shore	
Site Alias: None		Quad Number: 3008950	
Site Description: Marina		Mile Marker: N/A	
		Managed (Y/N)?:	
		Latitude: 30° 12' 36.664" N	
		Longitude: 89° 47' 21.235" W	
Response Considerations			
Site Strategy: Deferred Action		Site Strategy Comments:	
Site Waterbody Type: Entrance to Bays, etc			
Current Wave Action: Breaking Waves >1.5 ft			
Waterbody Opening: < 500 ft			
Resources At Risk			
ESI Code: 10B		Resources At Risk Comments:	
		None	
Contact Information			
Contact:		Special Contact:	
Site Statistics			
Submitted By: Paul Carroll		Submit Date: 5/1/2012	

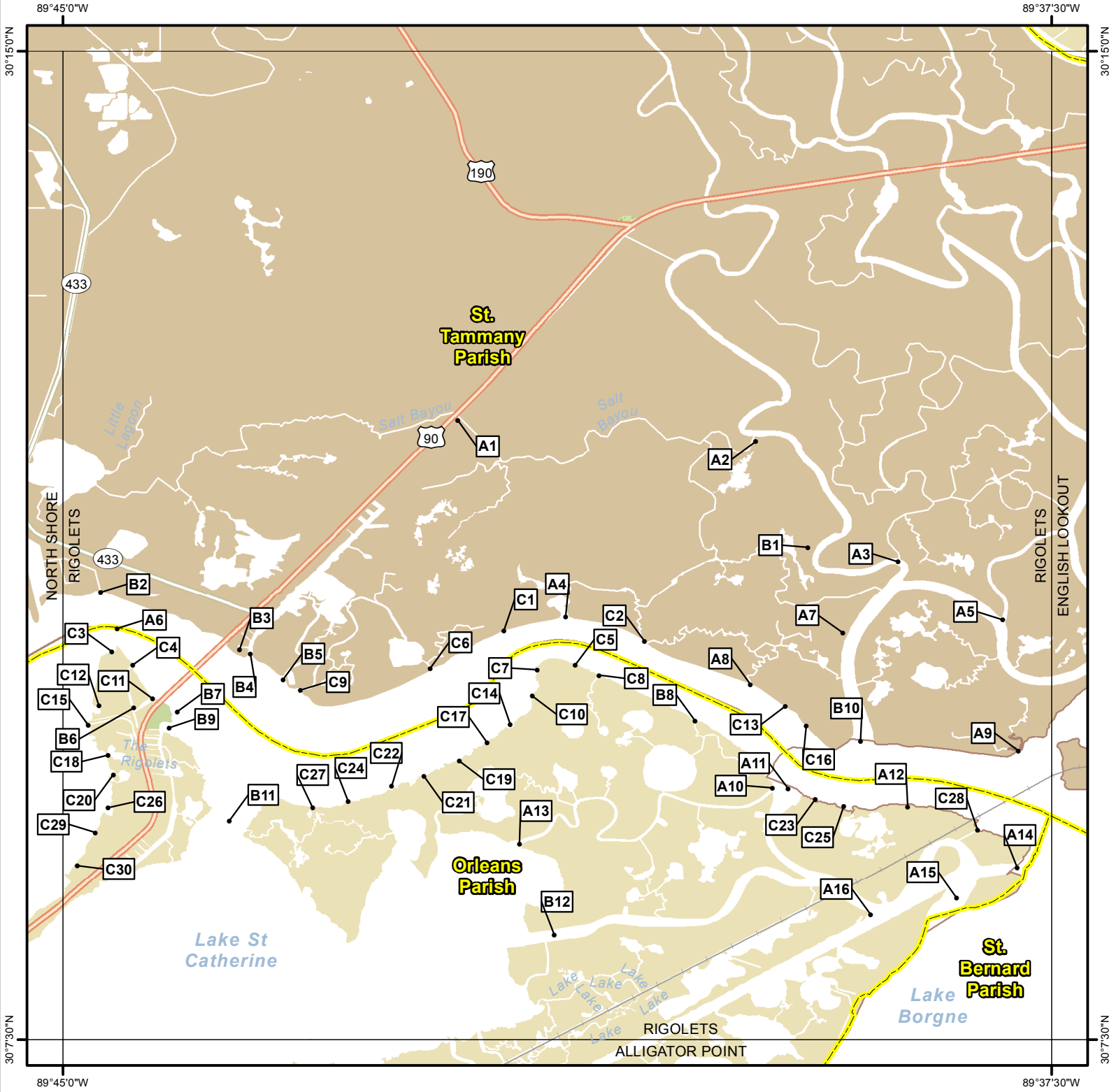
Site Information: B6		Location Information	
Name:	Lake Shore Estates	Parish:	St. Tammany
Priority:	B	Quad Name:	North Shore
Site Alias:	None	Quad Number:	3008950
Site Description: Sensitive habitat		Mile Marker:	
		Managed (Y/N)?:	
		Latitude:	30° 12' 29.514" N
		Longitude:	89° 47' 7.297" W
Response Considerations			
Site Strategy:	Deferred Action	Site Strategy Comments:	
Site Waterbody Type:	Entrance to Bays, etc		
Current Wave Action:	Breaking Waves >1.5 ft		
Waterbody Opening:	< 500 ft		
Resources At Risk			
ESI Code:	10B	Resources At Risk Comments:	
		None	
Contact Information			
Contact:		Special Contact:	
Site Statistics			
Submitted By: LDWF		Submit Date: 5/1/2012	

Site Information: B7		Location Information	
Name:	Lake Shore Estates	Parish:	St. Tammany
Priority:	B	Quad Name:	North Shore
Site Alias:	None	Quad Number:	3008950
Site Description: Sensitive habitat		Mile Marker:	
		Managed (Y/N)?:	
		Latitude:	30° 11' 47.540" N
		Longitude:	89° 45' 52.773" W
Response Considerations			
Site Strategy:	Deferred Action	Site Strategy Comments:	
Site Waterbody Type:	Entrance to Bays, etc		
Current Wave Action:	Breaking Waves >1.5 ft		
Waterbody Opening:	< 500 ft		
Resources At Risk			
ESI Code:	10B	Resources At Risk Comments:	
		None	
Contact Information			
Contact:		Special Contact:	
Site Statistics			
Submitted By: LDWF		Submit Date: 5/1/2012	

Site Information: B8		Location Information	
Name:	Treasure Isle West	Parish:	St. Tammany
Priority:	B	Quad Name:	North Shore
Site Alias:	None	Quad Number:	3008950
Site Description: Sensitive habitat		Mile Marker:	
		Managed (Y/N)?:	
		Latitude:	30° 10' 48.092" N
		Longitude:	89° 45' 11.656" W
Response Considerations			
Site Strategy:	Deflection Booming	Site Strategy Comments: Requires Detailed Review. Laura Carver: Revise priority=C and SiteName=Treasure Isle West. I' not sure who in LDWF submitted this location or why we would mark private property as a priortiy.	
Site Waterbody Type:	Entrance to Bays, etc		
Current Wave Action:	Breaking Waves <1.5 ft and Currents >1 kt		
Waterbody Opening:	< 500 ft		
Resources At Risk			
ESI Code:		Resources At Risk Comments: None	
Contact Information			
Contact:		Special Contact:	
Site Statistics			
Submitted By:	LDWF	Submit Date: 5/1/2012	

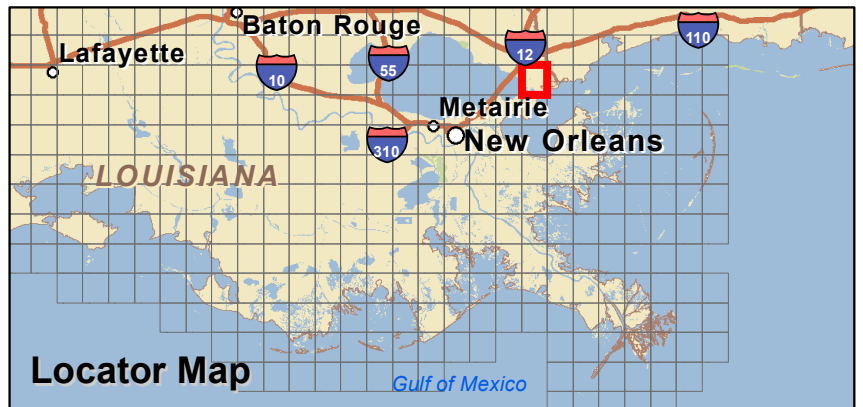
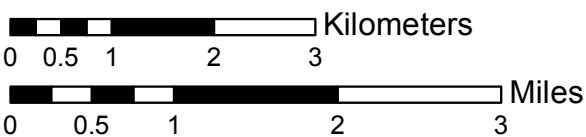
Site Information: B9		Location Information	
Name:	Irish Bayou Boat Launch	Parish:	Orleans
Priority:	B	Quad Name:	North Shore
Site Alias:	None	Quad Number:	3008950
Site Description: Boat Launch		Mile Marker:	
		Managed (Y/N)?:	
		Latitude:	30° 9' 8.360" N
		Longitude:	89° 51' 20.196" W
Response Considerations			
Site Strategy:	Deferred Action	Site Strategy Comments:	
Site Waterbody Type:	Straight Coastline		
Current Wave Action:	Breaking Waves >1.5 ft		
Waterbody Opening:	Not Applicable		
Resources At Risk			
ESI Code:	10A	Resources At Risk Comments:	
		None	
Contact Information			
Contact:		Special Contact:	
Site Statistics			
Submitted By: Paul Reeb		Submit Date: 4/30/2012	

RIGOLETS Quad



Legend

- GRP Sites
- Quad Boundary
- ▭ Parish Boundaries



Site Information: A1		Location Information	
Name:	Salt Bayou	Parish:	St. Tammany
Priority:	A	Quad Name:	Rigolets
Site Alias:	None	Quad Number:	3008951
Site Description: Bayou leading to Sensitive Habitat		Mile Marker:	N/A
		Managed (Y/N)?:	
		Latitude:	30° 12' 11.985" N
		Longitude:	89° 42' 0.284" W
Response Considerations			
Site Strategy:	Exclusion Booming	Site Strategy Comments:	
Site Waterbody Type:	Narrow Tidal Channel		
Current Wave Action:	Currents <1 kt		
Waterbody Opening:	< 500 ft		
Resources At Risk			
ESI Code:	10D	Resources At Risk Comments:	
		None	
Contact Information			
Contact:		Special Contact:	
Site Statistics			
Submitted By: Brain Fortson		Submit Date: 5/1/2012	

Site Information: A2		Location Information	
Name:	Salt Bayou	Parish:	St. Tammany
Priority:	A	Quad Name:	Rigolets
Site Alias:	None	Quad Number:	3008951
Site Description: Bayou leading to Sensitive Habitat		Mile Marker:	N/A
		Managed (Y/N)?:	
		Latitude:	30° 12' 2.345" N
		Longitude:	89° 39' 44.768" W
Response Considerations			
Site Strategy:	Exclusion Booming	Site Strategy Comments:	
Site Waterbody Type:	Narrow Tidal Channel		
Current Wave Action:	Currents <1 kt		
Waterbody Opening:	< 500 ft		
Resources At Risk			
ESI Code:	10B	Resources At Risk Comments:	
		None	
Contact Information			
Contact:		Special Contact:	
Site Statistics			
Submitted By:	Brain Fortson	Submit Date: 5/1/2012	

Site Information: A3		Location Information	
Name:	Tumor Mill River	Parish:	St. Tammany
Priority:	A	Quad Name:	Rigolets
Site Alias:	None	Quad Number:	3008951
Site Description: Sensitive Habitat		Mile Marker:	
		Managed (Y/N)?:	
		Latitude:	30° 11' 7.431" N
		Longitude:	89° 38' 39.877" W
Response Considerations			
Site Strategy:	Deflection Booming	Site Strategy Comments:	
Site Waterbody Type:	Narrow Tidal Channel		
Current Wave Action:	Current >1 kt		
Waterbody Opening:	< 500 ft		
Resources At Risk			
ESI Code:	10B	Resources At Risk Comments:	
		None	
Contact Information			
Contact:	LDWF	Special Contact:	N/A
Site Statistics			
Submitted By:	LDWF	Submit Date:	5/1/2012

Site Information: A4		Location Information	
Name:	Stump Bayou	Parish:	St. Tammany
Priority:	A	Quad Name:	Rigolets
Site Alias:	None	Quad Number:	3008951
Site Description:		Mile Marker:	
		Managed (Y/N)?:	
		Latitude:	30° 10' 42.500" N
		Longitude:	89° 41' 11.200" W
Response Considerations			
Site Strategy:	Deflection Booming	Site Strategy Comments:	
Site Waterbody Type:	Narrow Tidal Channel		
Current Wave Action:	Current >1 kt		
Waterbody Opening:	< 500 ft		
Resources At Risk			
ESI Code:		Resources At Risk Comments:	
Contact Information			
Contact:		Special Contact:	
Site Statistics			
Submitted By:	Brain Fortson / T-2101:LDEQ	Submit Date:	20120501

Site Information: A5		Location Information	
Name:	Johnson's Pass	Parish:	St. Tammany
Priority:	A	Quad Name:	Rigolets
Site Alias:	None	Quad Number:	3008951
Site Description: Sensitive Habitat		Mile Marker:	
		Managed (Y/N)?:	
		Latitude:	30° 10' 41.133" N
		Longitude:	89° 37' 52.282" W
Response Considerations			
Site Strategy:	Deflection Booming	Site Strategy Comments:	
Site Waterbody Type:	Narrow Tidal Channel		
Current Wave Action:	Current >1 kt		
Waterbody Opening:	< 500 ft		
Resources At Risk			
ESI Code:	10B	Resources At Risk Comments:	
		None	
Contact Information			
Contact:	LDWF	Special Contact:	N/A
Site Statistics			
Submitted By:	LDWF	Submit Date:	5/1/2012

Site Information: A6		Location Information	
Name:	Rigolets Pass to Lake Pontchartrain	Parish:	St. Tammany
Priority:	A	Quad Name:	Rigolets
Site Alias:	None	Quad Number:	3008951
Site Description:	Rigolets Pass to Lake Pontchartrain	Mile Marker:	
		Managed (Y/N)?:	
		Latitude:	30° 10' 37.300" N
		Longitude:	89° 44' 35.300" W
Response Considerations			
Site Strategy:	Deferred Action	Site Strategy Comments:	
Site Waterbody Type:	Narrow Tidal Channel		
Current Wave Action:	Current >1 kt		
Waterbody Opening:	2000-2500 ft		
Resources At Risk			
ESI Code:	10A	Resources At Risk Comments:	
		Rigolets - Pass to sensitive habitat	
Contact Information			
Contact:		Special Contact:	
Site Statistics			
Submitted By:		Submit Date:	
LDEQ		3/30/2012	

Site Information: A7		Location Information	
Name: Cemetery		Parish: St. Tammany	
Priority: A		Quad Name: Rigolets	
Site Alias: None		Quad Number: 3008951	
Site Description: Historical Site		Mile Marker:	
		Managed (Y/N)?:	
		Latitude: 30° 10' 35.182" N	
		Longitude: 89° 39' 5.124" W	
Response Considerations			
Site Strategy: Deflection Booming		Site Strategy Comments:	
Site Waterbody Type: Straight Coastline			
Current Wave Action: Breaking Waves <1.5 ft			
Waterbody Opening: < 500 ft			
Resources At Risk			
ESI Code: 10A		Resources At Risk Comments:	
		None	
Contact Information			
Contact:		Special Contact:	
Site Statistics			
Submitted By: LDWF		Submit Date: 5/1/2012	

Site Information: A8		Location Information	
Name:	Trout Bayou	Parish:	St. Tammany
Priority:	A	Quad Name:	Rigolets
Site Alias:	None	Quad Number:	3008951
Site Description:	Bayou leading to Sensitive Habitat	Mile Marker:	N/A
		Managed (Y/N)?:	
		Latitude:	30° 10' 11.769" N
		Longitude:	89° 39' 47.117" W
Response Considerations			
Site Strategy:	Exclusion Booming	Site Strategy Comments:	
Site Waterbody Type:	Narrow Tidal Channel		
Current Wave Action:	Currents <1 kt		
Waterbody Opening:	< 500 ft		
Resources At Risk			
ESI Code:	10A	Resources At Risk Comments:	
		None	
Contact Information			
Contact:		Special Contact:	
Site Statistics			
Submitted By:		Submit Date:	
Brain Fortson		5/1/2012	

Site Information: A9		Location Information	
Name:	Unnamed Outlet	Parish:	St. Tammany
Priority:	A	Quad Name:	Rigolets
Site Alias:	None	Quad Number:	3008951
Site Description: Outlet from Pearl River		Mile Marker:	
		Managed (Y/N)?:	
		Latitude:	30° 9' 41.500" N
		Longitude:	89° 37' 45.100" W
Response Considerations			
Site Strategy:	Deflection Booming	Site Strategy Comments:	
Site Waterbody Type:	Narrow Tidal Channel		
Current Wave Action:	Current >1 kt		
Waterbody Opening:	< 500 ft		
Resources At Risk			
ESI Code:	10A	Resources At Risk Comments:	
		Rigolets-Inlet to diverse habitat	
Contact Information			
Contact:		Special Contact:	
Site Statistics			
Submitted By: LDEQ		Submit Date: 3/30/2012	

Site Information: A10		Location Information	
Name:		Parish:	Orleans
Priority: A		Quad Name:	Rigolets
Site Alias: None		Quad Number:	3008951
Site Description: Tidal Inlet		Mile Marker:	
		Managed (Y/N)?: No	
		Latitude:	30° 9' 24.717" N
		Longitude:	89° 39' 37.191" W
Response Considerations			
Site Strategy: Deflection Booming		Site Strategy Comments:	
Site Waterbody Type: Narrow Tidal Channel			
Current Wave Action: Current >1 kt			
Waterbody Opening: < 500 ft			
Resources At Risk			
ESI Code: 10A		Resources At Risk Comments:	
		None	
Contact Information			
Contact:		Special Contact:	
Site Statistics			
Submitted By:		Submit Date: 4/30/2012	

Site Information: A11		Location Information	
Name:	Unnamed Inlet	Parish:	Orleans
Priority:	A	Quad Name:	Rigolets
Site Alias:	None	Quad Number:	3008951
Site Description:		Mile Marker:	
		Managed (Y/N)?:	
		Latitude:	30° 9' 24.300" N
		Longitude:	89° 39' 30.000" W
Response Considerations			
Site Strategy:	Deflection Booming	Site Strategy Comments:	
Site Waterbody Type:	Narrow Tidal Channel		
Current Wave Action:	Current >1 kt		
Waterbody Opening:	< 500 ft		
Resources At Risk			
ESI Code:		Resources At Risk Comments:	
Contact Information			
Contact:		Special Contact:	
Site Statistics			
Submitted By:	LDWF / O-2087:LDEQ	Submit Date:	20120430

Site Information: A12		Location Information	
Name:	Rabbit Island Bayou	Parish:	Orleans
Priority:	A	Quad Name:	Rigolets
Site Alias:	None	Quad Number:	3008951
Site Description:		Mile Marker:	
		Managed (Y/N)?:	
		Latitude:	30° 9' 15.923" N
		Longitude:	89° 38' 35.624" W
Response Considerations			
Site Strategy:	Deflection Booming	Site Strategy Comments:	
Site Waterbody Type:	Narrow Tidal Channel		
Current Wave Action:	Current >1 kt		
Waterbody Opening:	< 500 ft		
Resources At Risk			
ESI Code:		Resources At Risk Comments:	
Contact Information			
Contact:		Special Contact:	
Site Statistics			
Submitted By:	DEQ / O-2090:LDEQ	Submit Date:	20120516

Site Information: A13		Location Information	
Name:	Counterfeit Pass	Parish:	Orleans
Priority:	A	Quad Name:	Rigolets
Site Alias:	None	Quad Number:	3008951
Site Description: Tidal Inlet		Mile Marker:	
		Managed (Y/N)?:	No
		Latitude:	30° 8' 59.201" N
		Longitude:	89° 41' 32.294" W
Response Considerations			
Site Strategy:	Deflection Booming	Site Strategy Comments:	
Site Waterbody Type:	Narrow Tidal Channel		
Current Wave Action:	Current >1 kt		
Waterbody Opening:	< 500 ft		
Resources At Risk			
ESI Code:	10A	Resources At Risk Comments:	
		None	
Contact Information			
Contact:		Special Contact:	
Site Statistics			
Submitted By: LDWF		Submit Date: 4/30/2012	

Site Information: A14		Location Information	
Name:	Intercoastal Waterway	Parish:	Orleans
Priority:	A	Quad Name:	Rigolets
Site Alias:	None	Quad Number:	3008951
Site Description:		Mile Marker:	
		Managed (Y/N)?:	
		Latitude:	30° 8' 48.200" N
		Longitude:	89° 37' 45.700" W
Response Considerations			
Site Strategy:	Deflection Booming	Site Strategy Comments:	
Site Waterbody Type:	Narrow Tidal Channel		
Current Wave Action:	Current >1 kt		
Waterbody Opening:	500-1000 ft		
Resources At Risk			
ESI Code:		Resources At Risk Comments:	
Contact Information			
Contact:		Special Contact:	
Site Statistics			
Submitted By:	LDWF / O-2064:LDEQ	Submit Date:	20120430

Site Information: A15		Location Information	
Name:	Blind Rigolets	Parish:	Orleans
Priority:	A	Quad Name:	Rigolets
Site Alias:	None	Quad Number:	3008951
Site Description: Pass to Sensitive Habitat		Mile Marker:	
		Managed (Y/N)?:	
		Latitude:	30° 8' 34.500" N
		Longitude:	89° 38' 13.200" W
Response Considerations			
Site Strategy:	Deferred Action	Site Strategy Comments:	
Site Waterbody Type:	Narrow Tidal Channel		
Current Wave Action:	Current >1 kt		
Waterbody Opening:	1000-1500 ft		
Resources At Risk			
ESI Code:	10A	Resources At Risk Comments:	
		Sensitive Habitat	
Contact Information			
Contact:		Special Contact:	
Site Statistics			
Submitted By: LDEQ		Submit Date: 3/30/2012	

Site Information: A16		Location Information	
Name:	Unnamed Inlet	Parish:	Orleans
Priority:	A	Quad Name:	Rigolets
Site Alias:	None	Quad Number:	3008951
Site Description: Tidal Inlet		Mile Marker:	
		Managed (Y/N)?:	No
		Latitude:	30° 8' 26.882" N
		Longitude:	89° 38' 52.397" W
Response Considerations			
Site Strategy:	Deflection Booming	Site Strategy Comments:	
Site Waterbody Type:	Narrow Tidal Channel		
Current Wave Action:	Current >1 kt		
Waterbody Opening:	500-1000 ft		
Resources At Risk			
ESI Code:	10A	Resources At Risk Comments:	
		None	
Contact Information			
Contact:		Special Contact:	
Site Statistics			
Submitted By: LDWF		Submit Date: 4/30/2012	

Site Information: B1		Location Information	
Name:	British Jamaican Burial Site	Parish:	St. Tammany
Priority:	B	Quad Name:	Rigolets
Site Alias:	None	Quad Number:	3008951
Site Description: Cultural/Historical		Mile Marker:	N/A
		Managed (Y/N)?:	
		Latitude:	30° 11' 14.150" N
		Longitude:	89° 39' 20.954" W
Response Considerations			
Site Strategy:	Exclusion Booming	Site Strategy Comments:	
Site Waterbody Type:	Straight Coastline		
Current Wave Action:	Breaking Waves <1.5 ft		
Waterbody Opening:	Not Applicable		
Resources At Risk			
ESI Code:	10D	Resources At Risk Comments:	
		None	
Contact Information			
Contact:		Special Contact:	
Site Statistics			
Submitted By: Brain Fortson		Submit Date: 5/1/2012	

Site Information: B2		Location Information	
Name:	Treasure Isle East	Parish:	St. Tammany
Priority:	B	Quad Name:	Rigolets
Site Alias:	None	Quad Number:	3008951
Site Description:		Mile Marker:	
		Managed (Y/N)?:	
		Latitude:	30° 10' 53.600" N
		Longitude:	89° 44' 42.800" W
Response Considerations			
Site Strategy:	Deferred Action	Site Strategy Comments: Requires Detailed Review. Von Magee: Revise priority=C and SiteName=Treasure Isle East.	
Site Waterbody Type:	Entrance to Bays, etc		
Current Wave Action:	Breaking Waves >1.5 ft		
Waterbody Opening:	< 500 ft		
Resources At Risk			
ESI Code:		Resources At Risk Comments:	
Contact Information			
Contact:		Special Contact:	
Site Statistics			
Submitted By:	LDWF / T-2069:LDEQ	Submit Date:	20120501

Site Information: B3		Location Information	
Name:	Rigolets Marina	Parish:	St. Tammany
Priority:	B	Quad Name:	Rigolets
Site Alias:	None	Quad Number:	3008951
Site Description: Marina		Mile Marker:	
		Managed (Y/N)?:	
		Latitude:	30° 10' 27.788" N
		Longitude:	89° 43' 39.595" W
Response Considerations			
Site Strategy:	Notification to Site Manager	Site Strategy Comments:	
Site Waterbody Type:	Straight Coastline		
Current Wave Action:	Breaking Waves <1.5 ft		
Waterbody Opening:	Not Applicable		
Resources At Risk			
ESI Code:	10A	Resources At Risk Comments:	
		None	
Contact Information			
Contact:		Special Contact:	
Site Statistics			
Submitted By: LDWF		Submit Date: 5/1/2012	

Site Information: B4		Location Information	
Name:	West Double Bayou	Parish:	St. Tammany
Priority:	B	Quad Name:	Rigolets
Site Alias:	None	Quad Number:	3008951
Site Description:		Mile Marker:	
		Managed (Y/N)?:	
		Latitude:	30° 10' 25.668" N
		Longitude:	89° 43' 34.579" W
Response Considerations			
Site Strategy:	Deflection Booming	Site Strategy Comments:	
Site Waterbody Type:	Narrow Tidal Channel		
Current Wave Action:	Current >1 kt		
Waterbody Opening:	< 500 ft		
Resources At Risk			
ESI Code:		Resources At Risk Comments:	
Contact Information			
Contact:		Special Contact:	
Site Statistics			
Submitted By:	LDWF / T-2068:LDEQ	Submit Date:	20120501

Site Information: B5		Location Information	
Name:	East Double Bayou	Parish:	St. Tammany
Priority:	B	Quad Name:	Rigolets
Site Alias:	None	Quad Number:	3008951
Site Description:		Mile Marker:	
		Managed (Y/N)?:	
		Latitude:	30° 10' 14.000" N
		Longitude:	89° 43' 19.800" W
Response Considerations			
Site Strategy:	Deflection Booming	Site Strategy Comments:	
Site Waterbody Type:	Narrow Tidal Channel		
Current Wave Action:	Current >1 kt		
Waterbody Opening:	< 500 ft		
Resources At Risk			
ESI Code:		Resources At Risk Comments:	
Contact Information			
Contact:		Special Contact:	
Site Statistics			
Submitted By:	LDWF / T-2105:LDEQ	Submit Date:	20120501

Site Information: B6		Location Information	
Name:	Fort Pike	Parish:	Orleans
Priority:	B	Quad Name:	Rigolets
Site Alias:	None	Quad Number:	3008951
Site Description: Historical Site		Mile Marker:	
		Managed (Y/N)?:	No
		Latitude:	30° 10' 1.043" N
		Longitude:	89° 44' 27.603" W
Response Considerations			
Site Strategy:	Diversion Booming to Collection Point	Site Strategy Comments:	
Site Waterbody Type:	Straight Coastline		
Current Wave Action:	Breaking Waves <1.5 ft		
Waterbody Opening:	Not Applicable		
Resources At Risk			
ESI Code:	10A	Resources At Risk Comments:	
		None	
Contact Information			
Contact:		Special Contact:	
Site Statistics			
Submitted By: LDWF		Submit Date: 4/30/2012	

Site Information: B7		Location Information	
Name:	Fort Pike	Parish:	Orleans
Priority:	B	Quad Name:	Rigolets
Site Alias:	None	Quad Number:	3008951
Site Description: Historical Site		Mile Marker:	
		Managed (Y/N)?:	
		Latitude:	30° 9' 59.400" N
		Longitude:	89° 44' 7.900" W
Response Considerations			
Site Strategy:	Exclusion Booming	Site Strategy Comments:	
Site Waterbody Type:	Straight Coastline		
Current Wave Action:	Breaking Waves <1.5 ft		
Waterbody Opening:	Not Applicable		
Resources At Risk			
ESI Code:	10A	Resources At Risk Comments:	
		Historical Site	
Contact Information			
Contact:		Special Contact:	
Site Statistics			
Submitted By: LDEQ		Submit Date: 3/30/2012	

Site Information: B8		Location Information	
Name:	Goose Pond Bayou	Parish:	Orleans
Priority:	B	Quad Name:	Rigolets
Site Alias:	None	Quad Number:	3008951
Site Description:		Mile Marker:	
		Managed (Y/N)?:	
		Latitude:	30° 9' 55.300" N
		Longitude:	89° 40' 12.400" W
Response Considerations			
Site Strategy:	Deflection Booming	Site Strategy Comments:	
Site Waterbody Type:	Narrow Tidal Channel		
Current Wave Action:	Current >1 kt		
Waterbody Opening:	< 500 ft		
Resources At Risk			
ESI Code:		Resources At Risk Comments:	
Contact Information			
Contact:		Special Contact:	
Site Statistics			
Submitted By:	LA CPRA/DNR / O-2086:LDEQ	Submit Date:	20120516

Site Information: B9		Location Information	
Name:	Fort Pike Boat Launch	Parish:	Orleans
Priority:	B	Quad Name:	Rigolets
Site Alias:	None	Quad Number:	3008951
Site Description:		Mile Marker:	
		Managed (Y/N)?:	
		Latitude:	30° 9' 52.100" N
		Longitude:	89° 44' 11.600" W
Response Considerations			
Site Strategy:	Multi-Layer Diversion Booming to Collection Point	Site Strategy Comments:	
Site Waterbody Type:	Straight Coastline		
Current Wave Action:	Breaking Waves <1.5 ft		
Waterbody Opening:	Not Applicable		
Resources At Risk			
ESI Code:		Resources At Risk Comments:	
Contact Information			
Contact:		Special Contact:	
Site Statistics			
Submitted By:	Paul Reeb / O-2067:LDEQ	Submit Date:	20120430

Site Information: B10		Location Information	
Name:	West Pearl River	Parish:	St. Tammany
Priority:	B	Quad Name:	Rigolets
Site Alias:	None	Quad Number:	3008951
Site Description:		Mile Marker:	
		Managed (Y/N)?:	
		Latitude:	30° 9' 45.928" N
		Longitude:	89° 38' 56.986" W
Response Considerations			
Site Strategy:	Deflection Booming	Site Strategy Comments:	
Site Waterbody Type:	Rivers or Large Streams		
Current Wave Action:	Currents 1-2 kts		
Waterbody Opening:	500-1000 ft		
Resources At Risk			
ESI Code:		Resources At Risk Comments:	
Contact Information			
Contact:		Special Contact:	
Site Statistics			
Submitted By:	Blank / T-1341:LDWF / T-2060:LDEQ	Submit Date: 0	

Site Information: B11		Location Information	
Name:	Lake Catherine Pass	Parish:	Orleans
Priority:	B	Quad Name:	Rigolets
Site Alias:	None	Quad Number:	3008951
Site Description:		Mile Marker:	
		Managed (Y/N)?:	
		Latitude:	30° 9' 9.712" N
		Longitude:	89° 43' 44.198" W
Response Considerations			
Site Strategy:	Deferred Action	Site Strategy Comments:	
Site Waterbody Type:	Narrow Tidal Channel		
Current Wave Action:	Current >1 kt		
Waterbody Opening:	1500-2000 ft		
Resources At Risk			
ESI Code:		Resources At Risk Comments:	
Contact Information			
Contact:		Special Contact:	
Site Statistics			
Submitted By:	LDWF / O-2063:LDEQ	Submit Date:	20120430

Site Information: B12		Location Information	
Name:	Unnamed Inlet	Parish:	Orleans
Priority:	B	Quad Name:	Rigolets
Site Alias:	None	Quad Number:	3008951
Site Description: Tidal Inlet		Mile Marker:	
		Managed (Y/N)?:	No
		Latitude:	30° 8' 17.809" N
		Longitude:	89° 41' 16.418" W
Response Considerations			
Site Strategy:	Deflection Booming	Site Strategy Comments:	
Site Waterbody Type:	Narrow Tidal Channel		
Current Wave Action:	Current >1 kt		
Waterbody Opening:	500-1000 ft		
Resources At Risk			
ESI Code:	10A	Resources At Risk Comments:	
		None	
Contact Information			
Contact:		Special Contact:	
Site Statistics			
Submitted By: LDWF		Submit Date: 4/30/2012	

Site Information: C1		Location Information	
Name:	Unnamed Inlet	Parish:	St. Tammany
Priority:	C	Quad Name:	Rigolets
Site Alias:	None	Quad Number:	3008951
Site Description: Inlet from Rigolets		Mile Marker:	
		Managed (Y/N)?:	
		Latitude:	30° 10' 36.200" N
		Longitude:	89° 41' 39.300" W
Response Considerations			
Site Strategy:	Exclusion Booming	Site Strategy Comments:	
Site Waterbody Type:	Narrow Tidal Channel		
Current Wave Action:	Currents <1 kt		
Waterbody Opening:	< 500 ft		
Resources At Risk			
ESI Code:	10A	Resources At Risk Comments:	
		Rigolets - Inlet to diverse habitat	
Contact Information			
Contact:		Special Contact:	
Site Statistics			
Submitted By: LDEQ		Submit Date: 3/30/2012	

Site Information: C2		Location Information	
Name:	Unnamed Inlet	Parish:	St. Tammany
Priority:	C	Quad Name:	Rigolets
Site Alias:	None	Quad Number:	3008951
Site Description: Inlet from Rigolets		Mile Marker:	
		Managed (Y/N)?:	
		Latitude:	30° 10' 31.300" N
		Longitude:	89° 40' 35.300" W
Response Considerations			
Site Strategy:	Exclusion Booming	Site Strategy Comments:	
Site Waterbody Type:	Narrow Tidal Channel		
Current Wave Action:	Currents <1 kt		
Waterbody Opening:	< 500 ft		
Resources At Risk			
ESI Code:	10A	Resources At Risk Comments:	
		Rigolets - Inlet to diverse habitat	
Contact Information			
Contact:		Special Contact:	
Site Statistics			
Submitted By: LDEQ		Submit Date: 3/30/2012	

Site Information: C3		Location Information	
Name:	Unnamed Inlet	Parish:	Orleans
Priority:	C	Quad Name:	Rigolets
Site Alias:	None	Quad Number:	3008951
Site Description:	Inlet from Lake Pontchartrain	Mile Marker:	
		Managed (Y/N)?:	
		Latitude:	30° 10' 26.800" N
		Longitude:	89° 44' 37.800" W
Response Considerations			
Site Strategy:	Exclusion Booming	Site Strategy Comments:	
Site Waterbody Type:	Narrow Tidal Channel		
Current Wave Action:	Currents <1 kt		
Waterbody Opening:	< 500 ft		
Resources At Risk			
ESI Code:	10A	Resources At Risk Comments:	
		L. Pontchartrain-Inlet to diverse habitat	
Contact Information			
Contact:		Special Contact:	
Site Statistics			
Submitted By:		Submit Date:	
LDEQ		3/30/2012	

Site Information: C4		Location Information	
Name:	Unnamed Inlet	Parish:	Orleans
Priority:	C	Quad Name:	Rigolets
Site Alias:	None	Quad Number:	3008951
Site Description: Inlet from Rigolets		Mile Marker:	
		Managed (Y/N)?:	
		Latitude:	30° 10' 20.500" N
		Longitude:	89° 44' 28.200" W
Response Considerations			
Site Strategy:	Deflection Booming	Site Strategy Comments:	
Site Waterbody Type:	Narrow Tidal Channel		
Current Wave Action:	Current >1 kt		
Waterbody Opening:	< 500 ft		
Resources At Risk			
ESI Code:	10A	Resources At Risk Comments:	
		Rigolets - Inlet to diverse habitat	
Contact Information			
Contact:		Special Contact:	
Site Statistics			
Submitted By: LDEQ		Submit Date: 3/30/2012	

Site Information: C5		Location Information	
Name:	Unnamed Inlet	Parish:	Orleans
Priority:	C	Quad Name:	Rigolets
Site Alias:	None	Quad Number:	3008951
Site Description: Inlet from Rigolets		Mile Marker:	
		Managed (Y/N)?:	
		Latitude:	30° 10' 20.500" N
		Longitude:	89° 41' 6.800" W
Response Considerations			
Site Strategy:	Exclusion Booming	Site Strategy Comments:	
Site Waterbody Type:	Narrow Tidal Channel		
Current Wave Action:	Currents <1 kt		
Waterbody Opening:	< 500 ft		
Resources At Risk			
ESI Code:	10A	Resources At Risk Comments:	
		Rigolets - Inlet to diverse habitat	
Contact Information			
Contact:		Special Contact:	
Site Statistics			
Submitted By: LDEQ		Submit Date: 3/30/2012	

Site Information: C6		Location Information	
Name:	Unnamed Inlet	Parish:	St. Tammany
Priority:	C	Quad Name:	Rigolets
Site Alias:	None	Quad Number:	3008951
Site Description: Inlet from Rigolets		Mile Marker:	
		Managed (Y/N)?:	
		Latitude:	30° 10' 19.200" N
		Longitude:	89° 42' 12.800" W
Response Considerations			
Site Strategy:	Deflection Booming	Site Strategy Comments:	
Site Waterbody Type:	Entrance to Bays, etc		
Current Wave Action:	Breaking Waves <1.5 ft and Currents >1 kt		
Waterbody Opening:	< 500 ft		
Resources At Risk			
ESI Code:	10A	Resources At Risk Comments:	
		Rigolets - Inlet to diverse habitat	
Contact Information			
Contact:		Special Contact:	
Site Statistics			
Submitted By: LDEQ		Submit Date: 3/30/2012	

Site Information: C7		Location Information	
Name:	Unnamed Inlet	Parish:	Orleans
Priority:	C	Quad Name:	Rigolets
Site Alias:	None	Quad Number:	3008951
Site Description: Inlet from Rigolets		Mile Marker:	
		Managed (Y/N)?:	
		Latitude:	30° 10' 18.300" N
		Longitude:	89° 41' 24.100" W
Response Considerations			
Site Strategy:	Exclusion Booming	Site Strategy Comments:	
Site Waterbody Type:	Narrow Tidal Channel		
Current Wave Action:	Currents <1 kt		
Waterbody Opening:	< 500 ft		
Resources At Risk			
ESI Code:	10A	Resources At Risk Comments: Rigolets - Inlet to diverse habitat	
Contact Information			
Contact:		Special Contact:	
Site Statistics			
Submitted By:	LDEQ	Submit Date: 3/30/2012	

Site Information: C8		Location Information	
Name:	Unnamed Inlet	Parish:	Orleans
Priority:	C	Quad Name:	Rigolets
Site Alias:	None	Quad Number:	3008951
Site Description: Inlet from Rigolets		Mile Marker:	
		Managed (Y/N)?:	
		Latitude:	30° 10' 15.900" N
		Longitude:	89° 40' 56.100" W
Response Considerations			
Site Strategy: Exclusion Booming		Site Strategy Comments:	
Site Waterbody Type: Narrow Tidal Channel			
Current Wave Action: Currents <1 kt			
Waterbody Opening: < 500 ft			
Resources At Risk			
ESI Code: 10A		Resources At Risk Comments: Rigolets-Inlet to diverse habitat	
Contact Information			
Contact:		Special Contact:	
Site Statistics			
Submitted By: LDEQ		Submit Date: 3/30/2012	

Site Information: C9		Location Information	
Name:	Unnamed Inlet	Parish:	St. Tammany
Priority:	C	Quad Name:	Rigolets
Site Alias:	None	Quad Number:	3008951
Site Description: Inlet from Rigolets		Mile Marker:	
		Managed (Y/N)?:	
		Latitude:	30° 10' 9.100" N
		Longitude:	89° 43' 11.900" W
Response Considerations			
Site Strategy:	Deflection Booming	Site Strategy Comments:	
Site Waterbody Type:	Narrow Tidal Channel		
Current Wave Action:	Current >1 kt		
Waterbody Opening:	< 500 ft		
Resources At Risk			
ESI Code:	10A	Resources At Risk Comments:	
		Rigolets - Inlet to diverse habitat	
Contact Information			
Contact:		Special Contact:	
Site Statistics			
Submitted By: LDEQ		Submit Date: 3/30/2012	

Site Information: C10		Location Information	
Name:	Unnamed Inlet	Parish:	Orleans
Priority:	C	Quad Name:	Rigolets
Site Alias:	None	Quad Number:	3008951
Site Description: Inlet from Rigolets		Mile Marker:	
		Managed (Y/N)?:	
		Latitude:	30° 10' 6.400" N
		Longitude:	89° 41' 26.400" W
Response Considerations			
Site Strategy:	Exclusion Booming	Site Strategy Comments:	
Site Waterbody Type:	Narrow Tidal Channel		
Current Wave Action:	Currents <1 kt		
Waterbody Opening:	< 500 ft		
Resources At Risk			
ESI Code:	10A	Resources At Risk Comments:	
		Rigolets - Inlet to diverse habitat	
Contact Information			
Contact:		Special Contact:	
Site Statistics			
Submitted By: LDEQ		Submit Date: 3/30/2012	

Site Information: C11		Location Information	
Name:	Unnamed Inlet	Parish:	Orleans
Priority:	C	Quad Name:	Rigolets
Site Alias:	None	Quad Number:	3008951
Site Description: Inlet from Rigolets		Mile Marker:	
		Managed (Y/N)?:	
		Latitude:	30° 10' 5.300" N
		Longitude:	89° 44' 19.200" W
Response Considerations			
Site Strategy:	Deflection Booming	Site Strategy Comments:	
Site Waterbody Type:	Narrow Tidal Channel		
Current Wave Action:	Current >1 kt		
Waterbody Opening:	< 500 ft		
Resources At Risk			
ESI Code:	10C	Resources At Risk Comments:	
		Rigolets - Inlet to diverse habitat	
Contact Information			
Contact:		Special Contact:	
Site Statistics			
Submitted By: LDEQ		Submit Date: 3/30/2012	

Site Information: C12		Location Information	
Name:	Unnamed Inlet	Parish:	Orleans
Priority:	C	Quad Name:	Rigolets
Site Alias:	None	Quad Number:	3008951
Site Description:	Inlet from Lake Pontchartrain	Mile Marker:	
		Managed (Y/N)?:	
		Latitude:	30° 10' 2.100" N
		Longitude:	89° 44' 43.500" W
Response Considerations			
Site Strategy:	Exclusion Booming	Site Strategy Comments:	
Site Waterbody Type:	Narrow Tidal Channel		
Current Wave Action:	Currents <1 kt		
Waterbody Opening:	< 500 ft		
Resources At Risk			
ESI Code:	10A	Resources At Risk Comments:	
		L. Pontchartrain-Inlet to diverse habitat	
Contact Information			
Contact:		Special Contact:	
Site Statistics			
Submitted By:		Submit Date:	
LDEQ		3/30/2012	

Site Information: C13		Location Information	
Name:	Unnamed Inlet	Parish:	St. Tammany
Priority:	C	Quad Name:	Rigolets
Site Alias:	None	Quad Number:	3008951
Site Description: Inlet from Rigolets		Mile Marker:	
		Managed (Y/N)?:	
		Latitude:	30° 10' 1.700" N
		Longitude:	89° 39' 31.200" W
Response Considerations			
Site Strategy:	Exclusion Booming	Site Strategy Comments:	
Site Waterbody Type:	Narrow Tidal Channel		
Current Wave Action:	Currents <1 kt		
Waterbody Opening:	< 500 ft		
Resources At Risk			
ESI Code:	10A	Resources At Risk Comments:	
		Rigolets - Inlet to diverse habitat	
Contact Information			
Contact:		Special Contact:	
Site Statistics			
Submitted By: LDEQ		Submit Date: 3/30/2012	

Site Information: C14		Location Information	
Name:	Unnamed Inlet	Parish:	Orleans
Priority:	C	Quad Name:	Rigolets
Site Alias:	None	Quad Number:	3008951
Site Description: Inlet from Rigolets		Mile Marker:	
		Managed (Y/N)?:	
		Latitude:	30° 9' 53.500" N
		Longitude:	89° 41' 36.300" W
Response Considerations			
Site Strategy:	Exclusion Booming	Site Strategy Comments:	
Site Waterbody Type:	Narrow Tidal Channel		
Current Wave Action:	Currents <1 kt		
Waterbody Opening:	< 500 ft		
Resources At Risk			
ESI Code:	10A	Resources At Risk Comments:	
		Rigolets - Inlet to diverse habitat	
Contact Information			
Contact:		Special Contact:	
Site Statistics			
Submitted By: LDEQ		Submit Date: 3/30/2012	

Site Information: C15		Location Information	
Name:	Unnamed Inlet	Parish:	Orleans
Priority:	C	Quad Name:	Rigolets
Site Alias:	None	Quad Number:	3008951
Site Description:	Inlet from Lake Pontchartrain	Mile Marker:	
		Managed (Y/N)?:	
		Latitude:	30° 9' 53.300" N
		Longitude:	89° 44' 48.500" W
Response Considerations			
Site Strategy:	Deflection Booming	Site Strategy Comments:	
Site Waterbody Type:	Narrow Tidal Channel		
Current Wave Action:	Current >1 kt		
Waterbody Opening:	< 500 ft		
Resources At Risk			
ESI Code:	10A	Resources At Risk Comments:	
		L. Pontchartrain-Inlet to diverse habitat	
Contact Information			
Contact:		Special Contact:	
Site Statistics			
Submitted By:		Submit Date:	
LDEQ		3/30/2012	

Site Information: C16		Location Information	
Name:	Unnamed Inlet	Parish:	St. Tammany
Priority:	C	Quad Name:	Rigolets
Site Alias:	None	Quad Number:	3008951
Site Description: Inlet from Rigolets		Mile Marker:	
		Managed (Y/N)?:	
		Latitude:	30° 9' 52.700" N
		Longitude:	89° 39' 21.800" W
Response Considerations			
Site Strategy:	Exclusion Booming	Site Strategy Comments:	
Site Waterbody Type:	Narrow Tidal Channel		
Current Wave Action:	Currents <1 kt		
Waterbody Opening:	< 500 ft		
Resources At Risk			
ESI Code:	10A	Resources At Risk Comments:	
		Rigolets - Inlet to diverse habitat	
Contact Information			
Contact:		Special Contact:	
Site Statistics			
Submitted By:	LDEQ	Submit Date:	3/30/2012

Site Information: C17		Location Information	
Name:	Unnamed Inlet	Parish:	Orleans
Priority:	C	Quad Name:	Rigolets
Site Alias:	None	Quad Number:	3008951
Site Description: Inlet from Rigolets		Mile Marker:	
		Managed (Y/N)?:	
		Latitude:	30° 9' 45.300" N
		Longitude:	89° 41' 46.800" W
Response Considerations			
Site Strategy:	Exclusion Booming	Site Strategy Comments:	
Site Waterbody Type:	Narrow Tidal Channel		
Current Wave Action:	Currents <1 kt		
Waterbody Opening:	< 500 ft		
Resources At Risk			
ESI Code:	10A	Resources At Risk Comments:	
		Rigolets - Inlet to diverse habitat	
Contact Information			
Contact:		Special Contact:	
Site Statistics			
Submitted By: LDEQ		Submit Date: 3/30/2012	

Site Information: C18		Location Information	
Name:	Unnamed Inlet	Parish:	Orleans
Priority:	C	Quad Name:	Rigolets
Site Alias:	None	Quad Number:	3008951
Site Description:	Inlet from Lake Pontchartrain	Mile Marker:	
		Managed (Y/N)?:	
		Latitude:	30° 9' 39.500" N
		Longitude:	89° 44' 39.500" W
Response Considerations			
Site Strategy:	Exclusion Booming	Site Strategy Comments:	
Site Waterbody Type:	Entrance to Bays, etc		
Current Wave Action:	Breaking Waves <1.5 ft and Currents <1 kt		
Waterbody Opening:	< 500 ft		
Resources At Risk			
ESI Code:	10A	Resources At Risk Comments:	
		L. Pontchartrain-Inlet to diverse habitat	
Contact Information			
Contact:		Special Contact:	
Site Statistics			
Submitted By:		Submit Date:	
LDEQ		3/30/2012	

Site Information: C19		Location Information	
Name:	Unnamed Inlet	Parish:	Orleans
Priority:	C	Quad Name:	Rigolets
Site Alias:	None	Quad Number:	3008951
Site Description: Inlet from Rigolets		Mile Marker:	
		Managed (Y/N)?:	
		Latitude:	30° 9' 36.800" N
		Longitude:	89° 41' 59.600" W
Response Considerations			
Site Strategy: Exclusion Booming		Site Strategy Comments:	
Site Waterbody Type: Narrow Tidal Channel			
Current Wave Action: Currents <1 kt			
Waterbody Opening: < 500 ft			
Resources At Risk			
ESI Code: 10A		Resources At Risk Comments: Rigolets - Inlet to diverse habitat	
Contact Information			
Contact:		Special Contact:	
Site Statistics			
Submitted By: LDEQ		Submit Date: 3/30/2012	

Site Information: C20		Location Information	
Name:	Unnamed Inlet	Parish:	Orleans
Priority:	C	Quad Name:	Rigolets
Site Alias:	None	Quad Number:	3008951
Site Description:	Inlet from Lake Pontchartrain	Mile Marker:	
		Managed (Y/N)?:	
		Latitude:	30° 9' 30.800" N
		Longitude:	89° 44' 37.100" W
Response Considerations			
Site Strategy:	Exclusion Booming	Site Strategy Comments:	
Site Waterbody Type:	Entrance to Bays, etc		
Current Wave Action:	Breaking Waves <1.5 ft and Currents <1 kt		
Waterbody Opening:	< 500 ft		
Resources At Risk			
ESI Code:	10A	Resources At Risk Comments:	
		L. Pontchartrain-Inlet to diverse habitat	
Contact Information			
Contact:		Special Contact:	
Site Statistics			
Submitted By:		Submit Date:	
LDEQ		3/30/2012	

Site Information: C21		Location Information	
Name:	Unnamed Inlet	Parish:	Orleans
Priority:	C	Quad Name:	Rigolets
Site Alias:	None	Quad Number:	3008951
Site Description: Inlet from Rigolets		Mile Marker:	
		Managed (Y/N)?:	
		Latitude:	30° 9' 30.000" N
		Longitude:	89° 42' 15.700" W
Response Considerations			
Site Strategy:	Exclusion Booming	Site Strategy Comments:	
Site Waterbody Type:	Narrow Tidal Channel		
Current Wave Action:	Currents <1 kt		
Waterbody Opening:	500-1000 ft		
Resources At Risk			
ESI Code:	10A	Resources At Risk Comments:	
		Rigolets - Inlet to diverse habitat	
Contact Information			
Contact:		Special Contact:	
Site Statistics			
Submitted By: LDEQ		Submit Date: 3/30/2012	

Site Information: C22		Location Information	
Name:	Unnamed Inlet	Parish:	Orleans
Priority:	C	Quad Name:	Rigolets
Site Alias:	None	Quad Number:	3008951
Site Description: Inlet from Rigolets		Mile Marker:	
		Managed (Y/N)?:	
		Latitude:	30° 9' 25.500" N
		Longitude:	89° 42' 30.300" W
Response Considerations			
Site Strategy:	Exclusion Booming	Site Strategy Comments:	
Site Waterbody Type:	Narrow Tidal Channel		
Current Wave Action:	Currents <1 kt		
Waterbody Opening:	< 500 ft		
Resources At Risk			
ESI Code:	10A	Resources At Risk Comments:	
		Rigolets - Inlet to diverse habitat	
Contact Information			
Contact:		Special Contact:	
Site Statistics			
Submitted By: LDEQ		Submit Date: 3/30/2012	

Site Information: C23		Location Information	
Name:	Unnamed Inlet	Parish:	Orleans
Priority:	C	Quad Name:	Rigolets
Site Alias:	None	Quad Number:	3008951
Site Description: Inlet from Rigolets		Mile Marker:	
		Managed (Y/N)?:	
		Latitude:	30° 9' 19.600" N
		Longitude:	89° 39' 17.500" W
Response Considerations			
Site Strategy:	Exclusion Booming	Site Strategy Comments:	
Site Waterbody Type:	Narrow Tidal Channel		
Current Wave Action:	Currents <1 kt		
Waterbody Opening:	< 500 ft		
Resources At Risk			
ESI Code:	10A	Resources At Risk Comments:	
		Rigolets - Inlet to diverse habitat	
Contact Information			
Contact:		Special Contact:	
Site Statistics			
Submitted By: LDEQ		Submit Date: 3/30/2012	

Site Information: C24		Location Information	
Name:	Unnamed Inlet	Parish:	Orleans
Priority:	C	Quad Name:	Rigolets
Site Alias:	None	Quad Number:	3008951
Site Description: Inlet from Rigolets		Mile Marker:	
		Managed (Y/N)?:	
		Latitude:	30° 9' 18.600" N
		Longitude:	89° 42' 50.300" W
Response Considerations			
Site Strategy:	Exclusion Booming	Site Strategy Comments:	
Site Waterbody Type:	Narrow Tidal Channel		
Current Wave Action:	Currents <1 kt		
Waterbody Opening:	500-1000 ft		
Resources At Risk			
ESI Code:	10A	Resources At Risk Comments:	
		Rigolets - Inlet to diverse habitat	
Contact Information			
Contact:		Special Contact:	
Site Statistics			
Submitted By: LDEQ		Submit Date: 3/30/2012	

Site Information: C25		Location Information	
Name:	Unnamed Inlet	Parish:	Orleans
Priority:	C	Quad Name:	Rigolets
Site Alias:	None	Quad Number:	3008951
Site Description: Inlet from Rigolets		Mile Marker:	
		Managed (Y/N)?:	
		Latitude:	30° 9' 16.400" N
		Longitude:	89° 39' 4.700" W
Response Considerations			
Site Strategy:	Deflection Booming	Site Strategy Comments:	
Site Waterbody Type:	Narrow Tidal Channel		
Current Wave Action:	Current >1 kt		
Waterbody Opening:	< 500 ft		
Resources At Risk			
ESI Code:	10A	Resources At Risk Comments:	
		Rigolets - Inlet to diverse habitat	
Contact Information			
Contact:		Special Contact:	
Site Statistics			
Submitted By: LDEQ		Submit Date: 3/30/2012	

Site Information: C26		Location Information	
Name:	Unnamed Inlet	Parish:	Orleans
Priority:	C	Quad Name:	Rigolets
Site Alias:	None	Quad Number:	3008951
Site Description:	Inlet from Lake Pontchartrain	Mile Marker:	
		Managed (Y/N)?:	
		Latitude:	30° 9' 15.600" N
		Longitude:	89° 44' 39.400" W
Response Considerations			
Site Strategy:	Exclusion Booming	Site Strategy Comments:	
Site Waterbody Type:	Entrance to Bays, etc		
Current Wave Action:	Breaking Waves <1.5 ft and Currents <1 kt		
Waterbody Opening:	< 500 ft		
Resources At Risk			
ESI Code:	10A	Resources At Risk Comments:	
		L. Pontchartrain-Inlet to diverse habitat	
Contact Information			
Contact:		Special Contact:	
Site Statistics			
Submitted By:		Submit Date:	
LDEQ		3/30/2012	

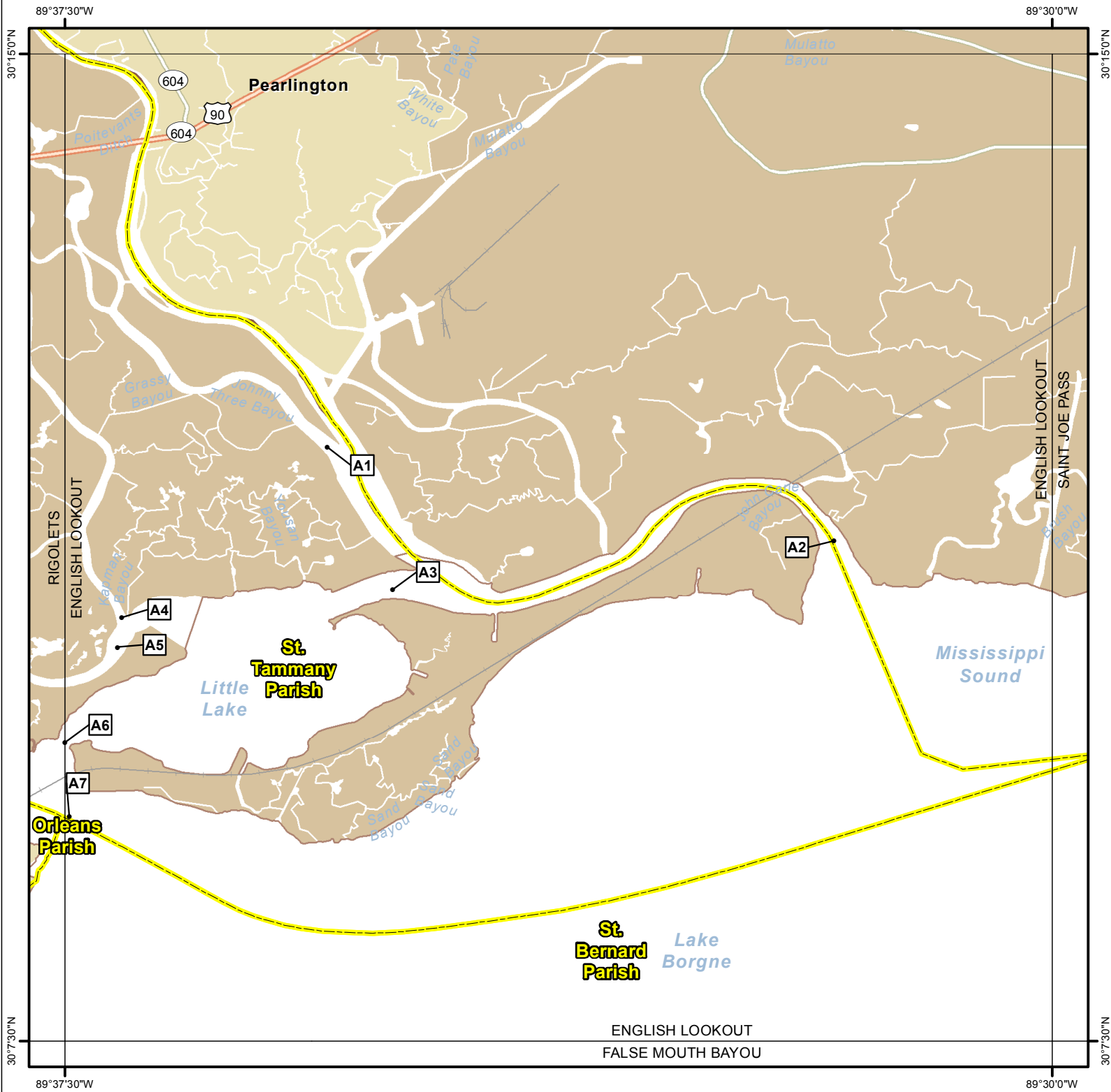
Site Information: C27		Location Information	
Name:	Unnamed Inlet	Parish:	Orleans
Priority:	C	Quad Name:	Rigolets
Site Alias:	None	Quad Number:	3008951
Site Description: Inlet from Rigolets		Mile Marker:	
		Managed (Y/N)?:	
		Latitude:	30° 9' 15.600" N
		Longitude:	89° 43' 6.300" W
Response Considerations			
Site Strategy:	Deflection Booming	Site Strategy Comments:	
Site Waterbody Type:	Narrow Tidal Channel		
Current Wave Action:	Current >1 kt		
Waterbody Opening:	< 500 ft		
Resources At Risk			
ESI Code:	10A	Resources At Risk Comments:	
		Rigolets - Inlet to diverse habitat	
Contact Information			
Contact:		Special Contact:	
Site Statistics			
Submitted By: LDEQ		Submit Date: 3/30/2012	

Site Information: C28		Location Information	
Name:	Unnamed Inlet	Parish:	Orleans
Priority:	C	Quad Name:	Rigolets
Site Alias:	None	Quad Number:	3008951
Site Description: Inlet from Rigolets		Mile Marker:	
		Managed (Y/N)?:	
		Latitude:	30° 9' 5.700" N
		Longitude:	89° 38' 3.800" W
Response Considerations			
Site Strategy:	Deflection Booming	Site Strategy Comments:	
Site Waterbody Type:	Narrow Tidal Channel		
Current Wave Action:	Current >1 kt		
Waterbody Opening:	< 500 ft		
Resources At Risk			
ESI Code:	10A	Resources At Risk Comments:	
		Rigolets - Inlet to diverse habitat	
Contact Information			
Contact:		Special Contact:	
Site Statistics			
Submitted By: LDEQ		Submit Date: 3/30/2012	

Site Information: C29		Location Information	
Name:	Unnamed Inlet	Parish:	Orleans
Priority:	C	Quad Name:	Rigolets
Site Alias:	None	Quad Number:	3008951
Site Description:	Inlet from Lake Pontchartrain	Mile Marker:	
		Managed (Y/N)?:	
		Latitude:	30° 9' 4.300" N
		Longitude:	89° 44' 45.400" W
Response Considerations			
Site Strategy:	Exclusion Booming	Site Strategy Comments:	
Site Waterbody Type:	Entrance to Bays, etc		
Current Wave Action:	Breaking Waves <1.5 ft and Currents <1 kt		
Waterbody Opening:	< 500 ft		
Resources At Risk			
ESI Code:	10A	Resources At Risk Comments:	
		L. Pontchartrain-Inlet to diverse habitat	
Contact Information			
Contact:		Special Contact:	
Site Statistics			
Submitted By:		Submit Date:	
LDEQ		3/30/2012	

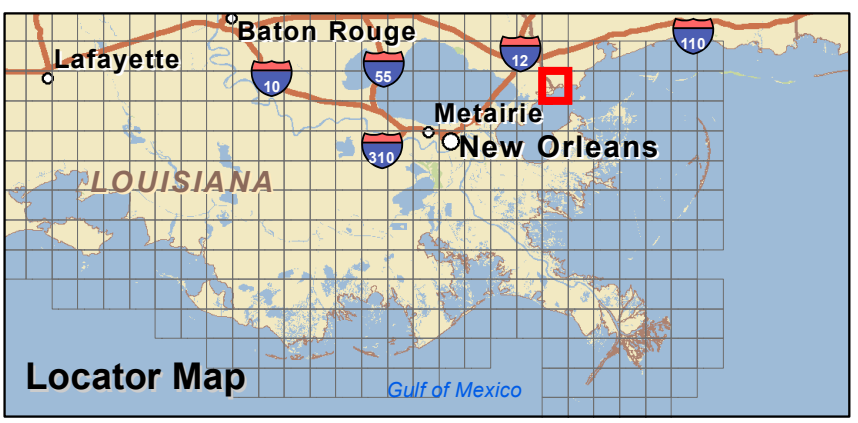
Site Information: C30		Location Information	
Name:	Unnamed Inlet	Parish:	Orleans
Priority:	C	Quad Name:	Rigolets
Site Alias:	None	Quad Number:	3008951
Site Description:		Mile Marker:	
		Managed (Y/N)?:	
		Latitude:	30° 8' 49.229" N
		Longitude:	89° 44' 53.473" W
Response Considerations			
Site Strategy:	Exclusion Booming	Site Strategy Comments:	
Site Waterbody Type:	Narrow Tidal Channel		
Current Wave Action:	Currents <1 kt		
Waterbody Opening:	< 500 ft		
Resources At Risk			
ESI Code:		Resources At Risk Comments:	
Contact Information			
Contact:		Special Contact:	
Site Statistics			
Submitted By:	LDEQ	Submit Date: 20120330	

ENGLISH LOOKOUT Quad



Legend

- GRP Sites
- ▭ Quad Boundary
- ▭ Parish Boundaries



Site Information: A1		Location Information	
Name:	Old Pearl River	Parish:	St. Tammany
Priority:	A	Quad Name:	English Lookout
Site Alias:	None	Quad Number:	3008952
Site Description:		Mile Marker:	
		Managed (Y/N)?:	
		Latitude:	30° 12' 0.722" N
		Longitude:	89° 35' 30.550" W
Response Considerations			
Site Strategy:	Deflection Booming	Site Strategy Comments:	
Site Waterbody Type:	Rivers or Large Streams		
Current Wave Action:	Currents 1-2 kts		
Waterbody Opening:	500-1000 ft		
Resources At Risk			
ESI Code:		Resources At Risk Comments:	
Contact Information			
Contact:		Special Contact:	
Site Statistics			
Submitted By:	LDWF / T-1404:DEQ	Submit Date:	20120516

Site Information: A2		Location Information	
Name:	East Pearl River	Parish:	St. Tammany
Priority:	A	Quad Name:	English Lookout
Site Alias:	None	Quad Number:	3008952
Site Description:		Mile Marker:	
		Managed (Y/N)?:	
		Latitude:	30° 11' 17.985" N
		Longitude:	89° 31' 39.443" W
Response Considerations			
Site Strategy:	Deferred Action	Site Strategy Comments:	
Site Waterbody Type:	Rivers or Large Streams		
Current Wave Action:	Currents >2 kts		
Waterbody Opening:	1000-1500 ft		
Resources At Risk			
ESI Code:		Resources At Risk Comments:	
Contact Information			
Contact:		Special Contact:	
Site Statistics			
Submitted By:	LDWF / T-56:Dr DeEtte Smythe / T-1344:LD	Submit Date:	20120501

Site Information: A3		Location Information	
Name:	East Pearl River at Mud Lake	Parish:	St. Tammany
Priority:	A	Quad Name:	English Lookout
Site Alias:	None	Quad Number:	3008952
Site Description: Wildlife Protection Area		Mile Marker:	Canal Marker 10
		Managed (Y/N)?:	
		Latitude:	30° 10' 55.867" N
		Longitude:	89° 35' 0.661" W
Response Considerations			
Site Strategy:	Deferred Action	Site Strategy Comments:	
Site Waterbody Type:	Narrow Tidal Channel		
Current Wave Action:	Current >1 kt		
Waterbody Opening:	1000-1500 ft		
Resources At Risk			
ESI Code:	10A	Resources At Risk Comments:	
		None	
Contact Information			
Contact:		Special Contact:	
Site Statistics			
Submitted By: LDWF		Submit Date: 5/1/2012	

Site Information: A4		Location Information	
Name:	Middle River	Parish:	St. Tammany
Priority:	A	Quad Name:	English Lookout
Site Alias:	None	Quad Number:	3008952
Site Description:		Mile Marker:	
		Managed (Y/N)?:	
		Latitude:	30° 10' 43.017" N
		Longitude:	89° 37' 4.013" W
Response Considerations			
Site Strategy:	Deflection Booming	Site Strategy Comments:	
Site Waterbody Type:	Rivers or Large Streams		
Current Wave Action:	Currents 1-2 kts		
Waterbody Opening:	500-1000 ft		
Resources At Risk			
ESI Code:		Resources At Risk Comments:	
Contact Information			
Contact:		Special Contact:	
Site Statistics			
Submitted By:	LDWF / T-1342:LDWF	Submit Date:	20120501

Site Information: A5		Location Information	
Name:	East Pass of East Pearl River	Parish:	St. Tammany
Priority:	A	Quad Name:	English Lookout
Site Alias:	None	Quad Number:	3008952
Site Description:		Mile Marker:	
		Managed (Y/N)?:	
		Latitude:	30° 10' 29.770" N
		Longitude:	89° 37' 6.074" W
Response Considerations			
Site Strategy:	Multi-Layer Deflection Booming	Site Strategy Comments:	
Site Waterbody Type:	Rivers or Large Streams		
Current Wave Action:	Currents >2 kts		
Waterbody Opening:	500-1000 ft		
Resources At Risk			
ESI Code:		Resources At Risk Comments:	
Contact Information			
Contact:		Special Contact:	
Site Statistics			
Submitted By:	Paul Carroll	Submit Date:	20120501

Site Information: A6		Location Information	
Name:	Mud Lake	Parish:	St. Tammany
Priority:	A	Quad Name:	English Lookout
Site Alias:	None	Quad Number:	3008952
Site Description:		Mile Marker:	
		Managed (Y/N)?:	
		Latitude:	30° 9' 46.100" N
		Longitude:	89° 37' 29.900" W
Response Considerations			
Site Strategy:	Deferred Action	Site Strategy Comments:	
Site Waterbody Type:	Entrance to Bays, etc		
Current Wave Action:	Breaking Waves >1.5 ft		
Waterbody Opening:	500-1000 ft		
Resources At Risk			
ESI Code:		Resources At Risk Comments:	
Contact Information			
Contact:		Special Contact:	
Site Statistics			
Submitted By:	LDWF / T-2058:LDEQ	Submit Date:	20120501

Site Information: A7		Location Information	
Name:	Rigolets Pass from Lake Borgne	Parish:	St. Tammany
Priority:	A	Quad Name:	English Lookout
Site Alias:	None	Quad Number:	3008952
Site Description:	Rigolets Pass from Lake Borgne	Mile Marker:	
		Managed (Y/N)?:	
		Latitude:	30° 9' 12.500" N
		Longitude:	89° 37' 27.900" W
Response Considerations			
Site Strategy:	Deferred Action	Site Strategy Comments:	
Site Waterbody Type:	Narrow Tidal Channel		
Current Wave Action:	Current >1 kt		
Waterbody Opening:	>2500 ft		
Resources At Risk			
ESI Code:		Resources At Risk Comments:	
		L Borgne - Pass to sensitive habitat	
Contact Information			
Contact:		Special Contact:	
Site Statistics			
Submitted By:	LDEQ	Submit Date:	3/30/2012

New Orleans Area Contingency Plan

Geographic Response Plan- St. Tammany Parish

Appendix A: St. Tammany GRP Content Contributors

Scott Lee	St. Tammany Parish Sheriff's Office
Brady Carter	Coastal Protection and Restoration Authority
Greg Reece	New Orleans Homeland Security and Emergency Preparedness
Brooklyn Susic	U.S. Coast Guard
Cathy Woodruff	OMI Environmental Services
Chance Greene	U.S. Coast Guard
Chip McGimsey	State Historic Preservation Officer
Danielle Wood	U.S. Coast Guard
David Gisclair	Louisiana Oil Spill Coordinators Office
DJ Garland	Louisiana Department of Wildlife and Fisheries
John O'Neil	St. Tammany Parish
Dorothy Taylor	U.S. District Attorney Office
Brain Fortson	St. Tammany Parish
Fernando Terceros	The Response Group
Paul Carroll	St. Tammany Parish
Keyth Pankau	U.S. Coast Guard
Jeff Dausat	Louisiana Department of Environmental Quality
Jeff Leonick	Louisiana Department of Environmental Quality
Karolien Debusschere	Louisiana Oil Spill Coordinators Office
Kyle Jellison	National Oceanic and Atmospheric Administration
Laura Carver	Louisiana Department of Wildlife and Fisheries
Lushan Hannah	U.S. Coast Guard

New Orleans Area Contingency Plan

Geographic Response Plan- St. Tammany Parish

Nicholas LaCroix	Louisiana Department of Natural Resources
Paul Stocklin	U.S. Coast Guard
Peter Gautier	U.S. Coast Guard, Federal On-Scene Coordinator
Randall McGimsey	Louisiana Oil Spill Coordinators Office
Robert Williamson	Louisiana Department of Natural Resources
Roland Guidry	Louisiana Oil Spill Coordinators Office, State On-Scene Coordinator
Roy LaPointe	U.S. Coast Guard
Sarah Clavo	The Response Group
D. Smyth	St. Tammany Engineering
Sean Fitzgerald	U.S. Coast Guard
Tedd Baker	Louisiana Department of Wildlife and Fisheries
Todd Folse	Coastal Protection and Restoration Authority
Von Magee	Louisiana Department of Environmental Quality
Dexter Accardo	St. Tammany Office of Emergency Preparedness
Gina Campo	St. Tammany Parish
Charles Strain	Louisiana Department Of Wildlife and Fisheries
Darice Breeding	Bureau of Ocean Energy Management
Tim Erikson	National Weather Service
Michael Thiel	St. Tammany Fire Department

New Orleans Area Contingency Plan

Geographic Response Plan- St. Tammany Parish

Appendix B: GRP Comments/Corrections/Suggestions

If you have any questions regarding this document or find any errors, please notify one of the following agencies:

- U.S. Coast Guard Sector New Orleans Contingency Planning
- Louisiana State Oil Spill Coordinators Office

Phone numbers: (504) 365-2102

Internet/E-mail Address: d08-pf-secneworleans-planning@uscg.mil

Address: Commander
 U.S. Coast Guard
 Sector New Orleans
 200 Hendee Street
 New Orleans, LA 70114
 Attn: Planning, ACP

New Orleans Area Contingency Plan

Geographic Response Plan- St. Tammany Parish

Comments/Corrections/Suggestions Form

Directions:

Fill in your name, address, agency, and phone number. Fill in the blanks regarding the location of information in the plan being commented on. Make Comments in space provided. Add extra sheets as necessary. Submit to:

Address: Commander
U.S. Coast Guard
Sector New Orleans
Contingency Planning
200 Hendee Street
New Orleans, LA 70114

Email: d08-pf-secneworleans-planning@uscg.mil

Name: _____	Title: _____	Agency: _____
Address: _____		
City: _____	State/Province: ____	Zip/Postal Code: _____
Phone: (____) _____	E-Mail: _____	

Site: _____	Page: _____
Location on page (Chapter, section, paragraph) (e.g. 2.1, paragraph 3): _____	

Comments: _____

New Orleans Area Contingency Plan

Geographic Response Plan- St. Tammany Parish

This page is intentionally left blank