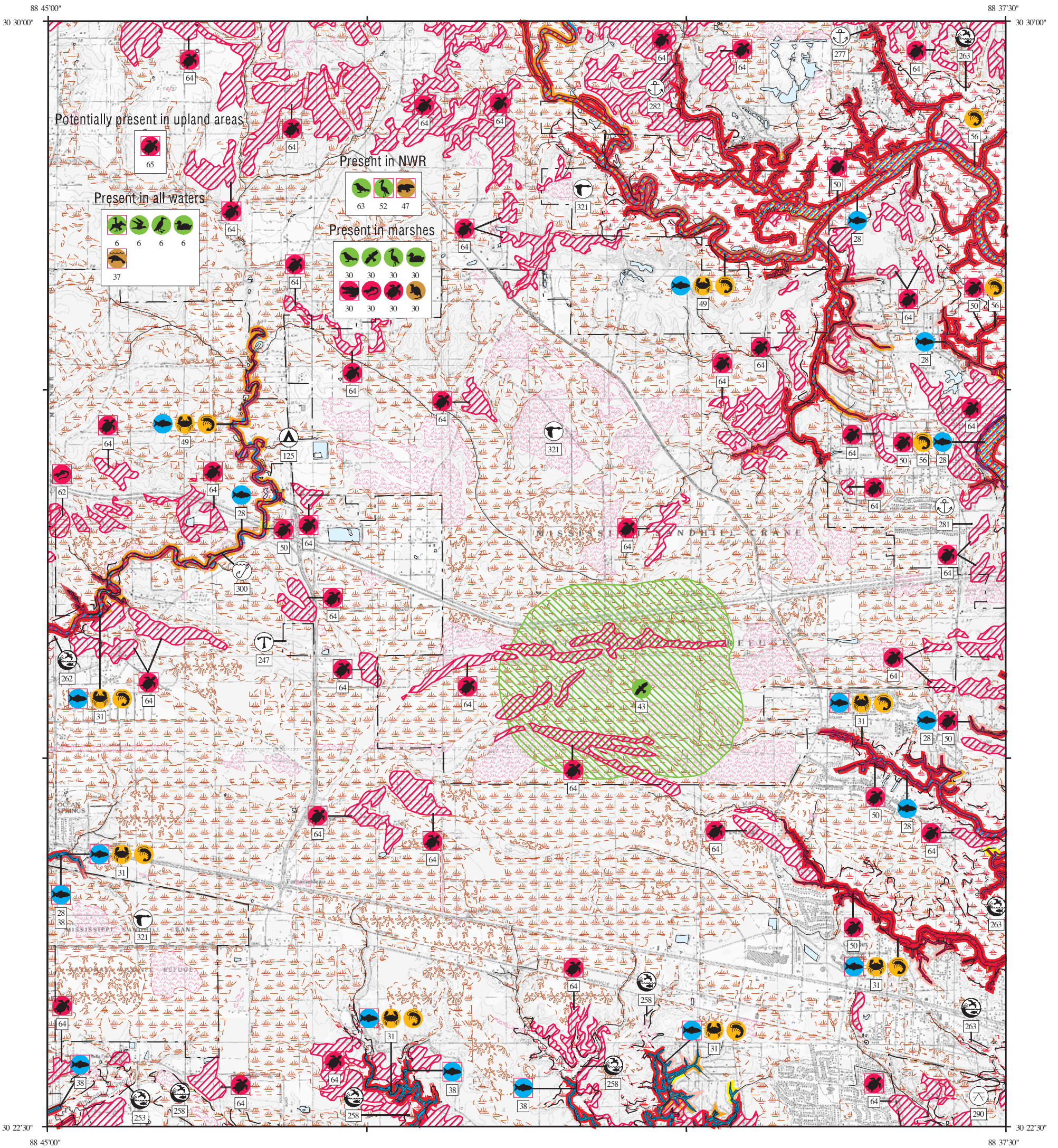


ENVIRONMENTAL SENSITIVITY INDEX MAP

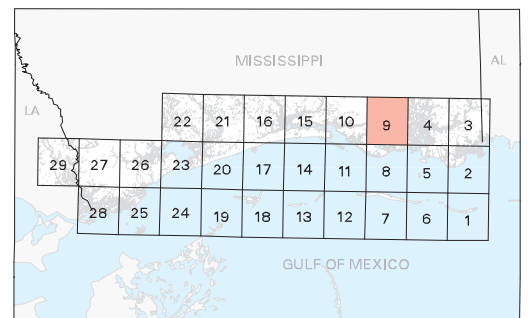
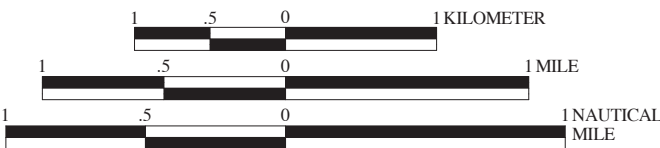


SHORELINE HABITATS (ESI)

- 1B EXPOSED, SOLID MAN- MADE STRUCTURES
- 2A EXPOSED WAVE- CUT PLATFORMS IN MUD OR CLAY
2B EXPOSED SCARPS AND STEEP SLOPES IN CLAY
- 3A FINE- TO MEDIUM- GRAINED SAND BEACHES
3B SCARPS AND STEEP SLOPES IN SAND
- 5 MIXED SAND AND GRAVEL BEACHES
- 6B RIPRAP
- 7 EXPOSED TIDAL FLATS
- 8A SHELTERED SCARPS IN MUD OR CLAY
- 8B SHELTERED, SOLID MAN- MADE STRUCTURES
- 8C SHELTERED RIPRAP
- 9A SHELTERED TIDAL FLATS
- 9B SHELTERED, VEGETATED LOW BANKS
- 10A SALT- AND BRACKISH- WATER MARSHES
- 10B FRESHWATER MARSHES
- 10C SWAMPS
- 10D SCRUB- SHRUB WETLANDS



SCALE 1:50000



Not For Navigation
Published: December 2009

Published at Seattle, Washington
National Oceanic and Atmospheric Administration
National Ocean Service
Office of Response and Restoration
Emergency Response Division

Mississippi: ESIMAP 9 (cont.)

HUMAN USE RESOURCES: (cont.)

PARK:

HUN#	Name	Contact	Phone
290	SHEPARD STATE PARK		228/497-2244

RECREATIONAL FISHING:

HUN#	Name	Contact	Phone
300	FORT BAYOU BRIDGE RAMP & PIER	JACKSON COUNTY	228/826-5330

WILDLIFE REFUGE:

HUN#	Name	Contact	Phone
321	MISSISSIPPI SANDHILL CRANE NWR	REFUGE MANAGER	228/497-6322