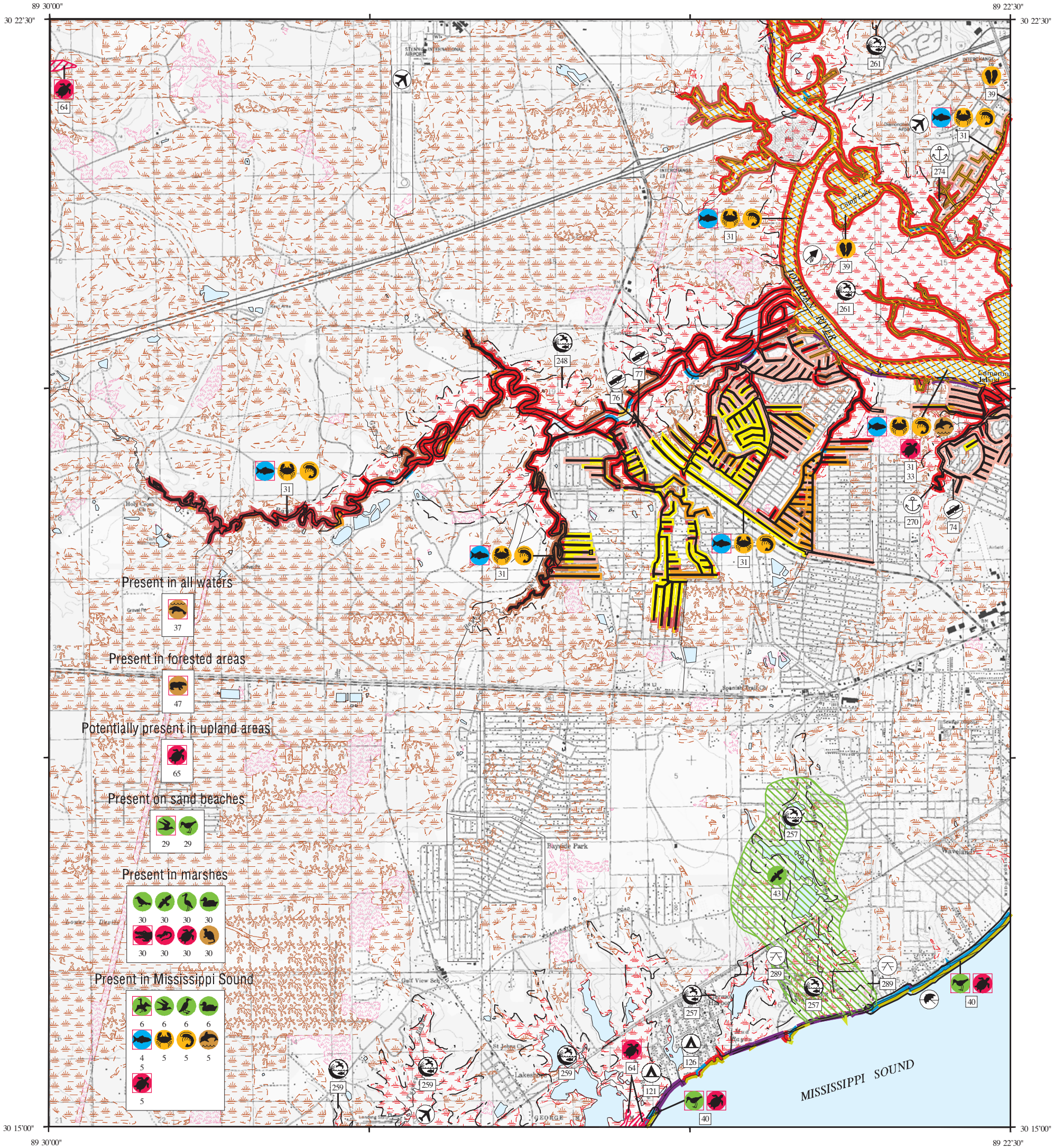
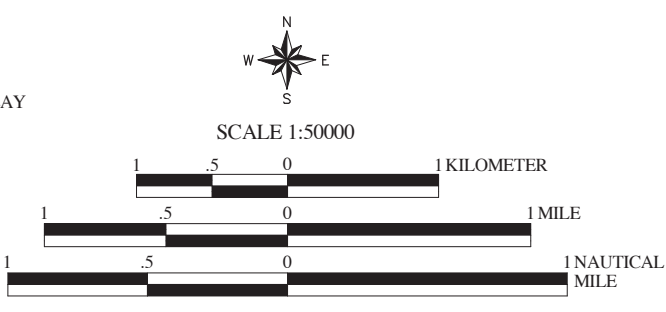


ENVIRONMENTAL SENSITIVITY INDEX MAP

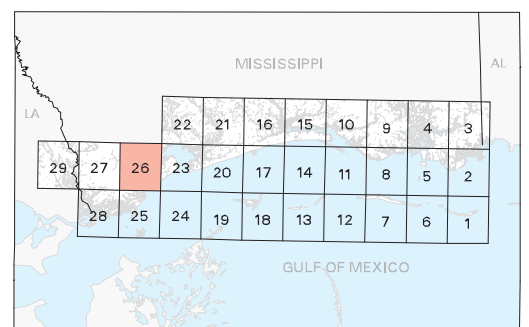


- Present in all waters
- Present in forested areas
- Potentially present in upland areas
- Present on sand beaches
- Present in marshes
- Present in Mississippi Sound

- ### SHORELINE HABITATS (ESI)
- 1B EXPOSED, SOLID MAN- MADE STRUCTURES
 - 2A EXPOSED WAVE- CUT PLATFORMS IN MUD OR CLAY
 - 2B EXPOSED SCARPS AND STEEP SLOPES IN CLAY
 - 3A FINE- TO MEDIUM- GRAINED SAND BEACHES
 - 3B SCARPS AND STEEP SLOPES IN SAND
 - 5 MIXED SAND AND GRAVEL BEACHES
 - 6B RIPRAP
 - 7 EXPOSED TIDAL FLATS
 - 8A SHELTERED SCARPS IN MUD OR CLAY
 - 8B SHELTERED, SOLID MAN- MADE STRUCTURES
 - 8C SHELTERED RIPRAP
 - 9A SHELTERED TIDAL FLATS
 - 9B SHELTERED, VEGETATED LOW BANKS
 - 10A SALT- AND BRACKISH- WATER MARSHES
 - 10B FRESHWATER MARSHES
 - 10C SWAMPS
 - 10D SCRUB- SHRUB WETLANDS



Not For Navigation
 Published: December 2009
 Published at Seattle, Washington
 National Oceanic and Atmospheric Administration
 National Ocean Service
 Office of Response and Restoration
 Emergency Response Division



Mississippi: ESIMAP 26

BIOLOGICAL RESOURCES:

BIRD:

| RAR# | Species | S F Conc. | J | F | M | A | M | J | J | A | S | O | N | D | Nesting | Migrating | Molting |
|------|-------------------------------|-----------|---|---|---|---|---|---|---|---|---|---|---|---|---------|-----------|---------|
| 6 | American white pelican | | X | X | X | | | | | | | | X | X | - | - | - |
| | Bonaparte's gull | | X | X | X | X | | | | | | | X | X | - | - | - |
| | Brown pelican | E | X | X | X | X | X | X | X | X | X | X | X | X | - | - | - |
| | Bufflehead | | X | X | X | X | | | | | | | X | X | - | - | - |
| | Canvasback | | X | X | X | X | | | | | | | X | X | - | - | - |
| | Common goldeneye | | X | X | X | X | | | | | | | X | X | - | - | - |
| | Common loon | | X | X | X | X | | | | | | | X | X | - | - | - |
| | Double-crested cormorant | | X | X | X | | | | | | | | X | X | - | - | - |
| | Greater scaup | | X | X | X | X | | | | | | | X | X | - | - | - |
| | Herring gull | | X | X | X | X | X | X | X | X | X | X | X | X | - | - | - |
| | Hooded merganser | | X | X | X | X | | | | | | | X | X | - | - | - |
| | Horned grebe | | X | X | X | X | | | | | | | X | X | - | - | - |
| | Laughing gull | | X | X | X | X | X | X | X | X | X | X | X | X | - | - | - |
| | Lesser scaup | | X | X | X | X | | | | | | | X | X | - | - | - |
| | Long-tailed duck | | X | X | X | X | | | | | | | X | X | - | - | - |
| | Northern gannet | | X | X | | | | | | | | | X | X | - | - | - |
| | Pied-billed grebe | | X | X | X | X | X | X | X | X | X | X | X | X | - | - | - |
| | Red-breasted merganser | | X | X | X | X | | | | | | | X | X | - | - | - |
| | Redhead | | X | X | X | X | | | | | | | X | X | - | - | - |
| | Ring-billed gull | | X | X | X | | | | | | | | X | X | - | - | - |
| | Ring-necked duck | | X | X | X | X | | | | | | | X | X | - | - | - |
| | Ruddy duck | | X | X | X | X | | | | | | | X | X | - | - | - |
| | Terns | | X | X | X | X | X | X | X | X | X | X | X | X | - | - | - |
| 29 | American oystercatcher | | X | X | X | X | X | X | X | X | X | X | X | X | MAY-SEP | - | - |
| | Black-bellied plover | | X | X | X | | | | | | | | X | X | - | - | - |
| | Dowitchers | | X | X | X | | | | | | | | X | X | - | - | - |
| | Dunlin | | X | X | X | | | | | | | | X | X | - | - | - |
| | Greater yellowlegs | | X | X | X | X | | | | | | | X | X | - | - | - |
| | Gull-billed tern | | X | X | X | X | X | X | X | X | X | X | X | X | MAY-SEP | - | - |
| | Killdeer | | X | X | X | X | X | X | X | X | X | X | X | X | - | - | - |
| | Least sandpiper | | X | X | X | X | | | | | | | X | X | - | - | - |
| | Least tern | E | | | | X | X | X | X | X | | | | | MAY-SEP | - | - |
| | Lesser yellowlegs | | X | X | X | X | | | | | | | X | X | - | - | - |
| | Red knot | | X | X | X | | | | | | | | X | X | - | - | - |
| | Royal tern | | X | X | X | X | X | X | X | X | X | X | X | X | MAY-SEP | - | - |
| | Ruddy turnstone | | X | X | X | | | | | | | | X | X | - | - | - |
| | Sanderling | | X | X | X | | | | | | | | X | X | - | - | - |
| | Sandwich tern | | | | | X | X | X | X | X | | | | | MAY-SEP | - | - |
| | Semipalmated plover | | X | X | X | | | | | | | | X | X | - | - | - |
| | Semipalmated sandpiper | | X | X | X | X | | | | | | | X | X | - | - | - |
| | Snowy plover | | X | X | X | | | | | | | | X | X | - | - | - |
| | Spotted sandpiper | | X | X | X | X | | | | | | | X | X | - | - | - |
| | Western sandpiper | | X | X | X | X | | | | | | | X | X | - | - | - |
| | Willet | | X | X | X | X | X | X | X | X | X | X | X | X | MAY-JUL | - | - |
| | Wilson's plover | | X | X | X | X | X | X | X | X | X | X | X | X | APR-SEP | - | - |
| 30 | American coot | | X | X | X | X | X | X | X | X | X | X | X | X | - | - | - |
| | American wigeon | | X | X | X | | | | | | | | X | X | - | - | - |
| | Black-crowned night-heron | | X | | | | | | | | | | X | X | - | - | - |
| | Blue-winged teal | | X | X | X | X | | | | | | | X | X | - | - | - |
| | Bufflehead | | X | X | X | X | | | | | | | X | X | - | - | - |
| | Canada goose | | X | X | X | X | X | X | X | X | X | X | X | X | FEB-MAY | - | - |
| | Canvasback | | X | X | X | X | | | | | | | X | X | - | - | - |
| | Cattle egret | | X | X | X | X | X | X | X | X | X | X | X | X | - | - | - |
| | Clapper rail | | X | X | X | X | X | X | X | X | X | X | X | X | MAY-AUG | - | - |
| | Common moorhen | | X | X | X | X | X | X | X | X | X | X | X | X | - | - | - |
| | Gadwall | | X | X | X | | | | | | | | X | X | - | - | - |
| | Great blue heron | | X | X | X | X | X | X | X | X | X | X | X | X | MAY-SEP | - | - |
| | Great egret | | X | X | X | X | X | X | X | X | X | X | X | X | - | - | - |
| | Greater scaup | | X | X | X | X | | | | | | | X | X | - | - | - |
| | Green heron | | X | X | X | X | X | X | X | X | X | X | X | X | MAY-AUG | - | - |
| | Green-winged teal | | X | X | X | X | | | | | | | X | X | - | - | - |
| | Hooded merganser | | X | X | X | X | X | X | X | X | X | X | X | X | FEB-AUG | - | - |
| | King rail | | X | X | X | X | X | X | X | X | X | X | X | X | MAY-AUG | - | - |
| | Least bittern | | | X | X | X | X | X | X | X | X | X | X | X | MAY-SEP | - | - |
| | Lesser scaup | | X | X | X | X | | | | | | | X | X | - | - | - |
| | Little blue heron | | X | X | X | X | X | X | X | X | X | X | X | X | - | - | - |
| | Mallard | | X | X | X | | | | | | | | X | X | - | - | - |
| | Marsh wren | | X | X | X | X | | | | | | | X | X | - | - | - |
| | Mottled duck | | X | X | X | X | X | X | X | X | X | X | X | X | FEB-AUG | - | - |
| | Nelson's sharp-tailed sparrow | | X | X | X | | | | | | | | X | X | - | - | - |
| | Northern pintail | | X | X | X | | | | | | | | X | X | - | - | - |
| | Northern shoveler | | X | X | X | | | | | | | | X | X | - | - | - |
| | Osprey | | X | X | X | X | X | X | X | X | X | X | X | X | MAR-AUG | - | - |
| | Redhead | | X | X | X | | | | | | | | X | X | - | - | - |
| | Ring-necked duck | | X | X | X | X | | | | | | | X | X | - | - | - |
| | Ruddy duck | | X | X | X | | | | | | | | X | X | - | - | - |
| | Seaside sparrow | | X | X | X | X | X | X | X | X | X | X | X | X | MAY-AUG | - | - |
| | Sedge wren | | X | X | X | | | | | | | | X | X | - | - | - |
| | Snowy egret | | | | | X | X | X | X | | | | | | MAY-SEP | - | - |
| | Sora | | | | | X | X | X | X | | | | X | X | - | - | - |
| | Tricolored heron | | X | X | X | X | X | X | X | X | X | X | X | X | - | - | - |
| | Virginia rail | | | X | X | X | | | | | | | X | X | - | - | - |
| | Wood duck | | X | X | X | X | X | X | X | X | X | X | X | X | FEB-AUG | - | - |
| | Yellow-crowned night-heron | | | X | X | X | X | X | | | | | | | - | - | - |
| 40 | Piping plover | E T | X | X | X | | | | | | | | X | X | - | - | - |
| 43 | Bald eagle | | X | X | X | X | X | | | | | | X | X | NOV-JUN | - | - |

FISH:

| RAR# | Species | S F Conc. | J | F | M | A | M | J | J | A | S | O | N | D | Spawning | Eggs | Larvae | Juveniles | Adults |
|------|--------------------------|-------------------|---|---|---|---|---|---|---|---|---|---|---|---|----------|---------|---------|-----------|---------|
| 4 | Gulf sturgeon | E T COMMON-WINTER | X | X | X | X | X | X | X | X | X | X | X | X | - | - | - | - | JAN-DEC |
| 5 | Atlantic croaker | | X | X | X | X | X | X | X | X | X | X | X | X | SEP-APR | SEP-APR | OCT-APR | JAN-DEC | JAN-DEC |
| | Atlantic sharpnose shark | | | X | X | X | X | X | | | | | | | - | - | - | - | - |
| | Atlantic spadefish | | | X | X | X | X | X | X | | | | | | - | - | - | APR-NOV | - |
| | Atlantic sturgeon | | X | X | X | X | | | | | | | X | X | - | - | - | - | OCT-MAY |
| | Atlantic thread herring | | | X | X | X | X | X | X | | | | | | - | - | - | - | MAR-NOV |
| | Bay anchovy | | X | X | X | X | X | X | X | X | X | X | X | X | FEB-OCT | FEB-OCT | FEB-OCT | JAN-DEC | JAN-DEC |
| | Black drum | | X | X | X | X | X | X | X | X | X | X | X | X | FEB-APR | FEB-APR | FEB-APR | JAN-DEC | JAN-DEC |
| | Blacktip shark | | X | X | X | X | X | X | X | X | X | X | X | X | - | - | - | - | - |
| | Bluefish | | X | X | X | X | X | X | X | X | X | X | X | X | JAN-DEC | - | - | MAY-OCT | MAY-OCT |
| | Bull shark | | X | X | X | X | X | X | X | X | X | X | X | X | - | - | - | - | - |
| | Crevalle jack | | X | X | X | X | X | X | X | X | X | X | X | X | JAN-DEC | MAY-SEP | MAY-SEP | JAN-DEC | MAY-SEP |
| | Florida pompano | | | X | X | X | X | X | X | X | | | | | MAY-JUL | MAY-JUL | MAY-JUL | MAY-NOV | MAY-SEP |
| | Gafftopsail catfish | | | X | X | X | X | | | | | | | | JUN-JUL | - | - | MAY-AUG | MAY-AUG |
| | Gag | | | | | | | | | | | | X | X | - | - | - | - | AUG-OCT |
| | Gizzard shad | | | X | X | X | X | X | X | | | | | | - | - | MAR-SEP | MAR-SEP | -</ |

Mississippi: ESIMAP 26 (cont.)

BIOLOGICAL RESOURCES: (cont.)

FISH: (cont.)

| RAR# | Species | S F Conc. | J | F | M | A | M | J | J | A | S | O | N | D | Spawning | Eggs | Larvae | Juveniles | Adults |
|------|-------------------------|-----------|---|---|---|---|---|---|---|---|---|---|---|---------|----------|---------|---------|-----------|---------|
| 5 | Gulf menhaden | | X | X | X | X | X | X | X | X | X | X | X | X | OCT-FEB | OCT-FEB | OCT-MAY | JAN-DEC | JAN-DEC |
| | Halfbeak | | | | | X | X | X | X | X | X | | | - | - | - | - | APR-OCT | |
| | Hardhead catfish | | X | X | X | X | X | X | X | X | X | X | X | MAY-AUG | MAY-AUG | MAY-SEP | JAN-DEC | JAN-DEC | |
| | Harvestfish | | X | X | X | X | X | X | X | X | X | X | X | - | - | JUN-NOV | JAN-DEC | APR-OCT | |
| | Inland silverside | | X | X | X | X | X | X | X | X | X | X | X | JAN-DEC | JAN-DEC | JAN-DEC | JAN-DEC | JAN-DEC | |
| | Ladyfish | | | | | X | X | X | X | X | | | | - | - | - | APR-SEP | - | |
| | Longnose killifish | | X | X | X | X | X | X | X | X | X | X | X | JUN-JUL | - | - | - | - | |
| | Marsh killifish | | X | X | X | X | X | X | X | X | X | X | X | - | - | - | - | - | |
| | Northern kingfish | | | | | X | X | X | X | X | X | X | X | - | - | MAR-JUN | - | - | |
| | Pigfish | | | | | X | X | X | X | X | X | X | X | APR-MAY | - | - | - | - | |
| | Pinfish | | X | X | X | X | X | X | X | X | X | X | X | NOV-MAR | NOV-MAR | NOV-APR | JAN-DEC | JAN-DEC | |
| | Red drum | | X | X | X | X | X | X | X | X | X | X | X | SEP-OCT | SEP-FEB | SEP-FEB | JAN-DEC | JAN-DEC | |
| | Red snapper | | | | | X | X | X | X | X | X | X | X | - | - | - | - | - | |
| | Rock sea bass | | | | | X | X | X | X | X | | | | - | - | - | - | - | |
| | Rough silverside | | X | X | X | X | X | X | X | X | X | X | X | MAR-SEP | MAR-SEP | MAR-SEP | JAN-DEC | JAN-DEC | |
| | Sand seatrout | | X | X | X | X | X | X | X | X | X | X | X | MAR-OCT | MAY-OCT | FEB-OCT | JAN-DEC | JAN-DEC | |
| | Scaled sardine | | | | | X | X | X | X | X | X | | | APR-SEP | - | - | AUG-SEP | - | |
| | Sheepshead | | X | X | X | X | X | X | X | X | X | X | X | FEB-MAR | FEB-APR | FEB-MAY | JAN-DEC | JAN-DEC | |
| | Silver perch | | X | X | X | X | X | X | X | X | X | X | X | MAY-SEP | MAY-SEP | MAY-SEP | JAN-DEC | JAN-DEC | |
| | Silver seatrout | | | | | X | X | X | X | X | X | X | X | - | - | JUN-OCT | - | - | |
| | Skipjack herring | | X | X | X | X | | | | | | X | X | MAR-APR | - | - | - | - | |
| | Southern flounder | | X | X | X | X | X | X | X | X | X | X | X | SEP-JAN | SEP-JAN | SEP-APR | JAN-DEC | JAN-DEC | |
| | Southern hake | | | | | X | X | X | | | | | | - | - | - | - | FEB-MAY | |
| | Southern kingfish | | X | X | X | X | X | X | X | X | X | X | X | MAR-OCT | - | - | JAN-NOV | - | |
| | Spanish mackerel | | | | | X | X | X | X | X | | | | JUN-SEP | JUN-SEP | JUN-SEP | APR-SEP | APR-SEP | |
| | Spinner shark | | X | X | X | X | X | X | X | X | X | X | X | - | - | - | - | - | |
| | Spot | | X | X | X | X | X | X | X | X | X | X | X | NOV-MAR | NOV-APR | NOV-MAR | JAN-DEC | JAN-DEC | |
| | Spotfin mojarra | | X | | | | | X | X | X | X | X | X | - | - | JUN-SEP | - | - | |
| | Spotted hake | | | | | X | X | | | | | | | - | - | - | - | - | |
| | Spotted seatrout | | X | X | X | X | X | X | X | X | X | X | X | MAR-SEP | MAR-SEP | MAR-OCT | JAN-DEC | JAN-DEC | |
| | Star drum | | | | | | | | | X | X | | | - | - | AUG-SEP | - | - | |
| | Striped anchovy | | | | | X | X | X | X | X | X | X | X | MAY-AUG | MAY-AUG | APR-AUG | APR-DEC | - | |
| | Striped mullet | | X | X | X | X | X | X | X | X | X | X | X | NOV-MAY | NOV-MAY | NOV-MAY | JAN-DEC | JAN-DEC | |
| | Tarpon | | X | X | X | X | X | X | X | X | X | X | X | APR-SEP | APR-SEP | MAY-SEP | JAN-DEC | JAN-DEC | |
| | Threadfin shad | | X | X | X | X | X | X | X | X | X | X | X | - | - | - | - | JAN-DEC | |
| | White mullet | | X | X | X | X | X | X | X | X | X | X | X | - | - | - | JAN-DEC | JAN-DEC | |
| 31 | Alligator gar | C | X | X | X | X | X | X | X | X | X | X | X | - | - | - | - | - | |
| | Atlantic croaker | | X | X | X | X | X | X | X | X | X | X | X | - | - | OCT-APR | JAN-DEC | APR-OCT | |
| | Atlantic sturgeon | | X | X | X | X | | | | X | X | | | - | - | - | - | OCT-MAY | |
| | Atlantic thread herring | | | | | X | X | X | X | X | X | X | X | - | - | - | - | MAR-NOV | |
| | Bay anchovy | | X | X | X | X | X | X | X | X | X | X | X | FEB-OCT | FEB-OCT | FEB-OCT | JAN-DEC | JAN-DEC | |
| | Blue catfish | | X | X | X | X | | | | X | X | X | X | - | - | - | - | - | |
| | Bluefish | | X | X | X | X | | | | X | X | X | X | - | - | - | OCT-APR | - | |
| | Channel catfish | | X | X | X | X | | | | X | X | | | - | - | - | - | - | |
| | Florida pompano | | | | | X | X | X | X | X | X | | | - | - | - | MAY-NOV | - | |
| | Gafftopsail catfish | | | | | X | X | X | X | | | | | JUN-JUL | - | - | MAY-AUG | MAY-AUG | |
| | Gizzard shad | | X | X | | | | | | X | X | X | X | - | - | - | NOV-FEB | NOV-FEB | |
| | Gulf butterfish | | X | X | X | X | X | X | X | X | X | X | X | - | - | - | APR-AUG | JAN-DEC | |
| | Gulf killifish | | X | X | X | X | X | X | X | X | X | X | X | MAR-SEP | - | - | - | - | |
| | Gulf menhaden | | X | X | X | X | X | X | X | X | X | X | X | - | - | JAN-DEC | JAN-DEC | MAR-AUG | |
| | Halfbeak | | | | | X | X | X | X | X | | | | - | - | - | - | APR-OCT | |
| | Hardhead catfish | | X | X | X | X | X | X | X | X | X | X | X | MAY-AUG | MAY-AUG | MAY-SEP | JAN-DEC | MAR-OCT | |
| | Harvestfish | | | | | X | X | X | X | X | | | | - | - | - | - | - | |
| | Inland silverside | | X | X | X | X | X | X | X | X | X | X | X | JAN-DEC | JAN-DEC | JAN-DEC | JAN-DEC | JAN-DEC | |
| | Ladyfish | | | | | X | X | X | X | | | | | - | - | - | APR-SEP | - | |
| | Longnose killifish | | X | X | X | X | X | X | X | X | X | X | X | JUN-JUL | - | - | - | - | |
| | Marsh killifish | | X | X | X | X | X | X | X | X | X | X | X | - | - | - | - | - | |
| | Northern kingfish | | | | | X | X | X | X | X | X | X | X | - | - | - | - | - | |
| | Pigfish | | | | | X | X | X | X | X | X | X | X | - | - | - | - | - | |
| | Pinfish | | X | X | X | X | X | X | X | X | X | X | X | - | - | JAN-MAR | JAN-DEC | - | |
| | Red drum | | X | X | X | X | X | X | X | X | X | X | X | - | - | SEP-FEB | JAN-DEC | - | |
| | Sailfin molly | | X | X | | | | | | X | X | X | X | - | - | - | - | - | |
| | Sand seatrout | | X | X | X | X | X | X | X | X | X | X | X | MAR-OCT | MAY-OCT | FEB-OCT | JAN-DEC | JAN-DEC | |
| | Scaled sardine | | | | | X | X | X | X | X | | | | APR-SEP | - | - | AUG-SEP | - | |
| | Sheepshead | | X | X | X | X | X | X | X | X | X | X | X | - | - | FEB-MAY | JAN-DEC | JUN-FEB | |
| | Sheepshead minnow | | X | X | X | X | X | X | X | X | X | X | X | - | - | APR-OCT | - | - | |
| | Silver perch | | X | X | X | X | X | X | X | X | X | X | X | MAY-SEP | MAY-SEP | MAY-SEP | JAN-DEC | JAN-DEC | |
| | Skipjack herring | | X | X | X | X | | | | X | X | | | MAR-APR | - | - | - | - | |
| | Southern flounder | | X | X | X | X | X | X | X | X | X | X | X | - | - | - | JAN-DEC | JAN-DEC | |
| | Southern hake | | X | X | X | X | | | | X | | | | - | - | - | - | - | |
| | Southern kingfish | | X | X | X | X | X | X | X | X | X | X | X | MAR-OCT | - | - | JAN-NOV | - | |
| | Spot | | X | X | X | X | X | X | X | X | X | X | X | - | - | DEC-MAY | JAN-DEC | MAR-OCT | |
| | Spotted seatrout | | X | X | X | X | X | X | X | X | X | X | X | MAR-SEP | MAR-SEP | MAR-OCT | JAN-DEC | JAN-DEC | |
| | Striped anchovy | | | | | X | X | X | X | X | X | X | X | MAY-AUG | MAY-AUG | APR-AUG | APR-DEC | - | |
| | Striped bass | | | | | X | X | X | | | | | | APR-JUN | - | - | - | - | |
| | Striped mullet | | X | X | X | X | X | X | X | X | X | X | X | NOV-MAY | NOV-MAY | NOV-MAY | JAN-DEC | JAN-DEC | |
| | Tarpon | | X | X | X | X | X | X | X | X | X | X | X | - | - | MAY-SEP | JAN-DEC | - | |
| | White mullet | | X | X | X | X | X | X | X | X | X | X | X | - | - | - | JAN-DEC | JAN-DEC | |

INVERTEBRATE:

| RAR# | Species | S F Conc. | J | F | M | A | M | J | J | A | S | O | N | D | Spawning | Eggs | Larvae | Juveniles | Adults |
|------|-----------------|-----------|---|---|---|---|---|---|---|---|---|---|---|---------|----------|---------|---------|-----------|--------|
| 5 | Blue crab | | X | X | X | X | X | X | X | X | X | X | X | MAY-NOV | MAY-NOV | MAY-NOV | - | JAN-DEC | |
| | Brown shrimp | | X | X | X | X | X | X | X | X | X | X | X | - | - | FEB-NOV | - | JAN-DEC | |
| | Horseshoe crab | | X | X | X | X | X | X | X | X | X | X | X | - | - | - | - | JAN-DEC | |
| | Pink shrimp | | X | X | X | X | X | X | X | X | X | X | X | - | - | APR-NOV | - | JAN-DEC | |
| | Stone crab | | X | X | X | X | X | X | X | X | X | X | X | APR-SEP | APR-SEP | APR-OCT | APR-OCT | JAN-DEC | |
| | White shrimp | | X | X | X | X | X | X | X | X | X | X | X | - | - | - | - | JAN-DEC | |
| 31 | Blue crab | | X | X | X | X | X | X | X | X | X | X | X | MAY-NOV | MAY-NOV | MAY-NOV | MAY-NOV | JAN-DEC | |
| | Brown shrimp | | X | X | X | X | X | X | X | X | X | X | X | - | - | FEB-NOV | FEB-NOV | JAN-DEC | |
| | Pink shrimp | | X | X | X | X | X | X | X | X | X | X | X | - | - | APR-NOV | APR-NOV | JAN-DEC | |
| | Stone crab | | X | X | X | X | X | X | X | X | X | X | X | APR-SEP | APR-SEP | APR-OCT | APR-OCT | JAN-DEC | |
| | White shrimp | | X | X | X | X | X | X | X | X | X | X | X | - | - | - | MAR-NOV | JAN-DEC | |
| 39 | Atlantic rangia | | X | X | X | X | X | X | X | X | X | X | X | MAR-NOV | MAR-NOV | MAR-NOV | JAN-DEC | JAN-DEC | |

MARINE MAMMAL:

| RAR# | Species | S F Conc. | J | F | M | A | M | J | J | A | S | O | N | D | Mating | Calving | Pupping | Molting |
|------|---------------------|-----------|---|---|---|---|---|---|---|---|---|---|---|---|--------|---------|---------|---------|
| 5 | Bottlenose dolphin | | X | X | X | X | X | X | X | X | X | X | X | - | - | - | - | - |
| 33 | Bottlenose dolphin | | X | X | X | X | X | X | X | X | X | X | X | - | - | - | - | - |
| 37 | West Indian manatee | E E | | | | X | X | X | X | X | | | | - | - | - | - | - |

REPTILE:

| RAR# | Species | S F Conc. | J | F | M | A | M | J | J | A | S | O | N | D | Nesting | Hatching | Interesting | Juveniles | Adults |
|------|--------------------------|-----------|---|---|---|---|---|---|---|---|---|---|---|---|---------|----------|-------------|-----------|---------|
| 5 | Kemp's ridley sea turtle | E E | X | X | X | X | X | X | X | X | X | X | X | - | - | - | - | JAN-DEC | JAN-DEC |
| | Loggerhead sea turtle | E T | X | X | X | X | X | X | X | X | X | X | X | - | - | - | - | JAN-DEC | JAN-DEC |
| 30 | American alligator | T T | X | X | X | X | X | | | | | | | | | | | | |

Mississippi: ESIMAP 26 (cont.)

BIOLOGICAL RESOURCES: (cont.)

REPTILE: (cont.)

| RAR# | Species | S F Conc. | J | F | M | A | M | J | J | A | S | O | N | D | Nesting | Hatching | Interesting | Juveniles | Adults |
|------|--------------------------|--------------------------|---|---|---|---|---|---|---|---|---|---|---|---|---------|----------|-------------|-----------|---------|
| 30 | Gulf salt marsh snake | | X | X | X | X | X | X | X | X | X | X | X | X | - | - | - | - | - |
| 33 | Kemp's ridley sea turtle | E E | X | X | X | X | X | X | X | X | X | X | X | X | - | - | - | JAN-DEC | JAN-DEC |
| | Loggerhead sea turtle | E T | X | X | X | X | X | X | X | X | X | X | X | X | - | - | - | JAN-DEC | JAN-DEC |
| 40 | Loggerhead sea turtle | E T LOW | | | | | X | X | X | X | X | X | X | X | MAY-SEP | JUN-OCT | - | - | MAY-SEP |
| 64 | Gopher tortoise | E T MED-HIGH PROBABILITY | X | X | X | X | X | X | X | X | X | X | X | X | MAY-OCT | - | - | - | - |
| 65 | Gopher tortoise | E T LOW PROBABILITY | X | X | X | X | X | X | X | X | X | X | X | X | MAY-OCT | - | - | - | - |

TERRESTRIAL MAMMAL:

| RAR# | Species | S F Conc. | J | F | M | A | M | J | J | A | S | O | N | D |
|------|----------------------|-----------|---|---|---|---|---|---|---|---|---|---|---|---|
| 30 | Muskrat | | X | X | X | X | X | X | X | X | X | X | X | X |
| | Northern river otter | | X | X | X | X | X | X | X | X | X | X | X | X |
| 47 | Louisiana black bear | E T | X | X | X | X | X | X | X | X | X | X | X | X |

HUMAN USE RESOURCES:

BOAT RAMP:

| HUN# | Name | Contact | Phone |
|------|-------------------------|----------------|--------------|
| 74 | BAY MARINA | | |
| 76 | BAYOU LACROIX BOAT RAMP | HAROLD HAMMICK | 228/255-1881 |
| 77 | BAYOU LACROIX MARINA | | |

CAMPGROUND:

| HUN# | Name | Contact | Phone |
|------|------------------------|------------|--------------|
| 121 | FAIRVIEW CAMPGROUND | JIM MANESS | 228/466-3808 |
| 126 | POOR JOHN'S CAMPGROUND | | 228/467-3822 |

MANAGEMENT AREA:

| HUN# | Name | Contact | Phone |
|------|---------------------------------------|---------|--------------|
| 248 | BAYOU LACROIX COASTAL PRESERVE | MDMR | 228/374-5000 |
| 257 | GRAND BAYOU COASTAL PRESERVE | MDMR | 228/374-5000 |
| 259 | HANCOCK COUNTY MARSH COASTAL PRESERVE | MDMR | 228/374-5000 |
| 261 | JOURDAN RIVER COASTAL PRESERVE | MDMR | 228/374-5000 |

MARINA:

| HUN# | Name | Contact | Phone |
|------|--------------------|-----------------------------------------|--------------|
| 270 | BAY MARINA | MICKEY DEMORAN | 228/466-4970 |
| 274 | DIAMONDHEAD MARINA | DIAMONDHEAD PROPERTY OWNERS ASSOCIATION | 228/255-7055 |

PARK:

| HUN# | Name | Contact | Phone |
|------|----------------------|---------|--------------|
| 289 | BUCCANEER STATE PARK | | 228/467-3822 |

Biological information shown on the maps represents known concentration areas or occurrences, but does not necessarily represent the full distribution or range of each species. This is particularly important to recognize when considering potential impacts to protected species.