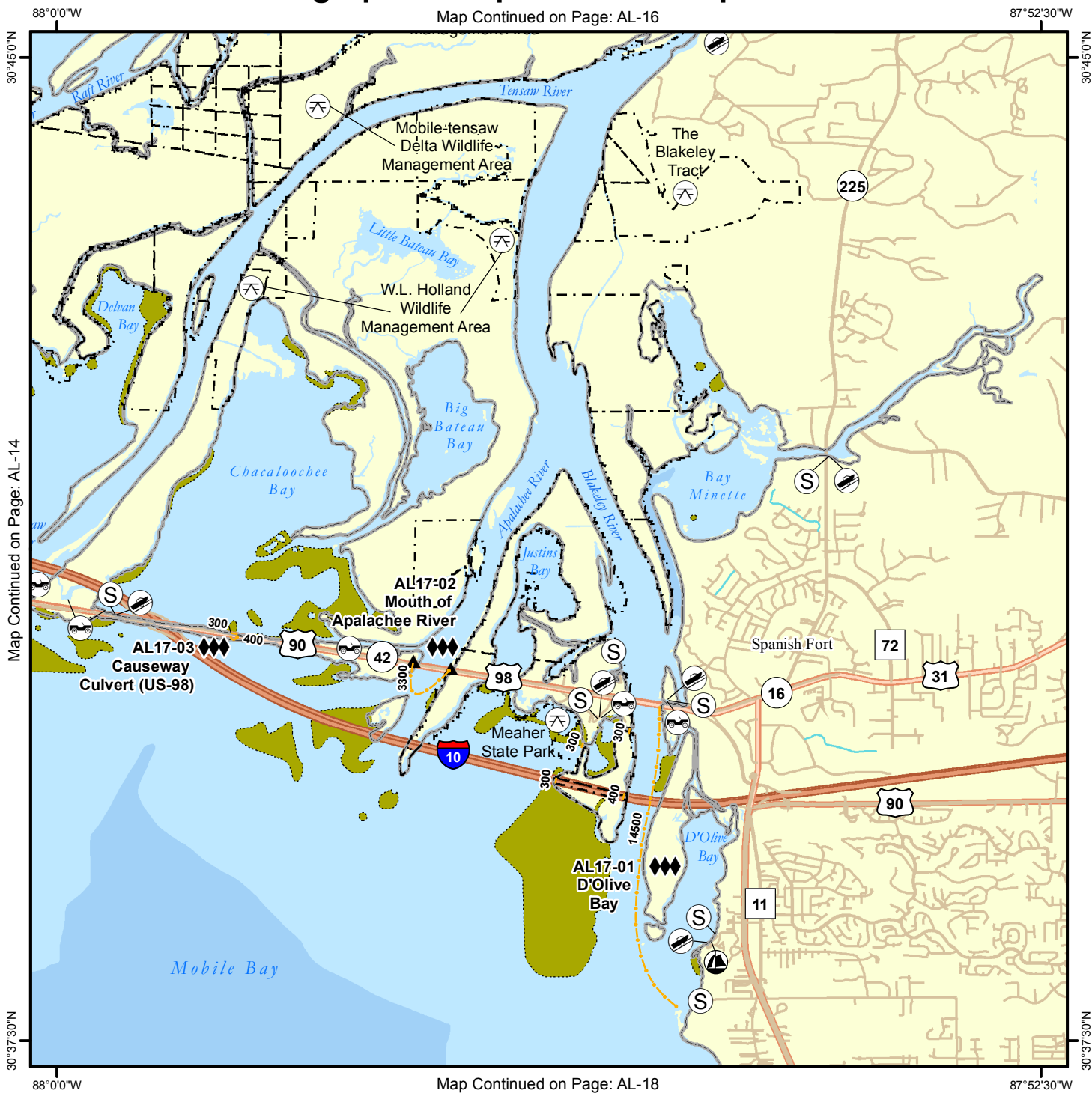


Geographic Response Plan Map: AL-17

Map Continued on Page: AL-16



Map Continued on Page: AL-14

30°37'30\"/>

Environmentally Sensitive Areas

Summer Protection Priority

- ◆◆◆ A - Protect First
- ◆◆ B - Protect after A Areas
- ◆ C - Protect after B Areas

Response Methods

- Y Skimmer
- Shallow Water Skimmer
- ▲ Collection Point
- ▲ Natural Collection Points
- General Booming Strategy (Length in Feet)
- Incident Command Posts
- Ⓢ Staging Areas
- Ⓡ Oil Spill Risk Sites
- ⓔ Equipment Storage Locations
- Beach or Water Access

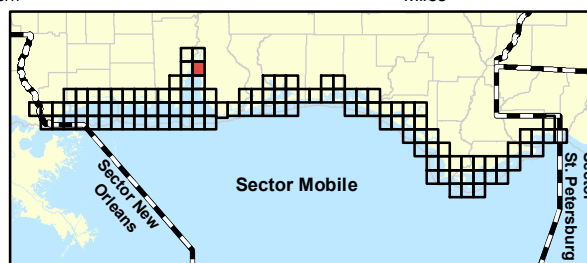
Bio-Socioeconomic

- ✈ Airport
- Ⓜ Aquaculture
- Ⓜ Aquatic Preserve/State Park
- Artificial Reef/Hardbottom
- Beach Mouse Habitat
- Black Bear Habitat
- Boat Ramp
- Coast Guard
- Diving
- Flatwoods Salamander
- Heliport
- High Recreational Beach
- Manatee
- Ⓜ Marina
- Ⓜ NERR
- Ⓜ National Park
- Ⓜ Naval Base
- Ⓜ Panama City Crayfish
- Ⓜ Power Plant
- Ⓜ Reptile Habitat of Concern
- Ⓜ Sea Turtle Nesting
- Ⓜ Shore Bird Habitat
- Ⓜ Spring
- Ⓜ Sturgeon
- Ⓜ Water Intake
- Ⓜ Wildlife Refuge

- Sea Turtle Nesting Beach
- Federal Managed Areas
- State Managed Areas
- Aquaculture/Oysters
- State Waters/County Line
- USCG Sector Boundary



Sector Mobile Area Committee Fish and Wildlife Research Institute



Map Continued on Page: AL-18

87°52'30\"/>

Geographic Response Plan Map: AL-17SE

Map Continued on Page: AL-17NE



Map Continued on Page: AL-17SW

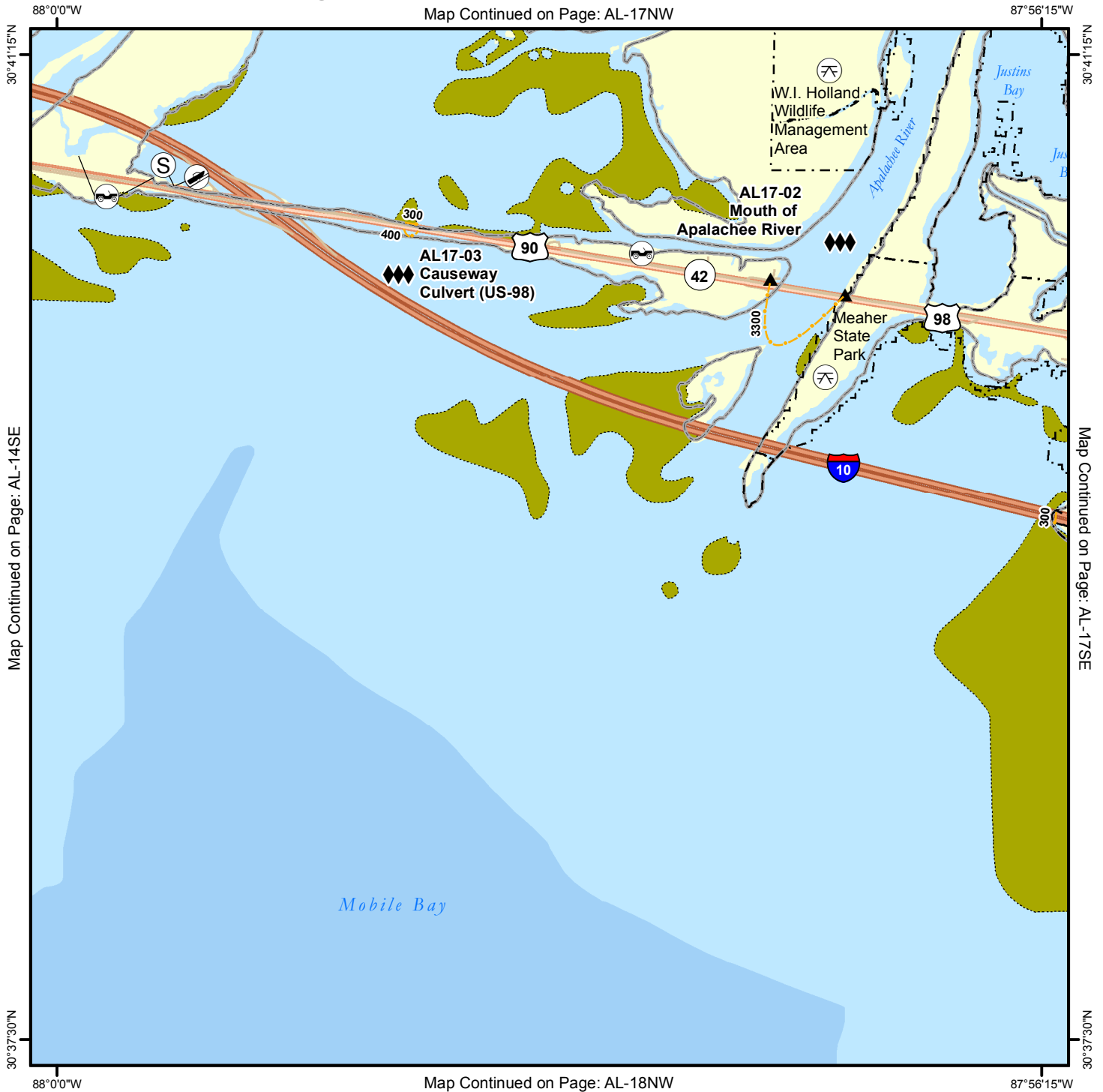
Map Continued on Page: AL-18NE

<p>Environmentally Sensitive Areas</p> <p>Summer Protection Priority</p> <ul style="list-style-type: none"> ◆◆◆ A - Protect First ◆◆ B - Protect after A Areas ◆ C - Protect after B Areas <p>Response Methods</p> <ul style="list-style-type: none"> Y Skimmer Shallow Water Skimmer ▲ Collection Point ▲ Natural Collection Points General Booming Strategy (Length in Feet) Incident Command Posts (S) Staging Areas (R) Oil Spill Risk Sites (E) Equipment Storage Locations Beach or Water Access Locations 	<p>Bio-Socioeconomic</p> <ul style="list-style-type: none"> Airport Aquaculture Aquatic Preserve/State Park Artificial Reef/Hardbottom Beach Mouse Habitat Black Bear Habitat Boat Ramp Coast Guard Diving Flatwoods Salamander Heliport High Recreational Beach Manatee 	<ul style="list-style-type: none"> Marina NERR National Park Naval Base Panama City Crayfish Power Plant Reptile Habitat of Concern Sea Turtle Nesting Shore Bird Habitat Spring Sturgeon Water Intake Wildlife Refuge 	<ul style="list-style-type: none"> Sea Turtle Nesting Beach Federal Managed Areas State Managed Areas Aquaculture/Oyster State Waters/County Line USCG Sector Boundary 	<p>Sector Mobile Area Committee</p> <p>Fish and Wildlife Research Institute</p>
--	--	---	--	---

0 0.25 0.5 0.75 1 Miles

Geographic Response Plan Map: AL-17SW

Map Continued on Page: AL-17NW



Map Continued on Page: AL-14SE

Map Continued on Page: AL-17SE

30°37'30"N

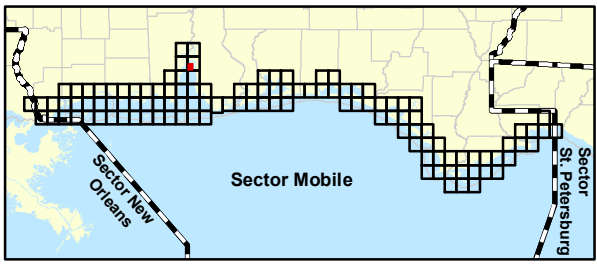
30°41'15"N

88°0'0"W

Map Continued on Page: AL-18NW

87°56'15"W

<p>Environmentally Sensitive Areas</p> <p>Summer Protection Priority</p> <ul style="list-style-type: none"> ◆◆◆ A - Protect First ◆◆ B - Protect after A Areas ◆ C - Protect after B Areas <p>Response Methods</p> <ul style="list-style-type: none"> Y Skimmer ☉ Shallow Water Skimmer ▲ Collection Point ▲ Natural Collection Points 👉 General Booming Strategy (Length in Feet) ▣ Incident Command Posts Ⓢ Staging Areas Ⓡ Oil Spill Risk Sites ⓔ Equipment Storage Locations Ⓜ Beach or Water Access Locations 	<p>Bio-Socioeconomic</p> <ul style="list-style-type: none"> ✈ Airport 🐟 Aquaculture 🌿 Aquatic Preserve/State Park 🏗 Artificial Reef/Hardbottom 🐭 Beach Mouse Habitat 🐻 Black Bear Habitat 🚤 Boat Ramp 🚢 Coast Guard 🤿 Diving 🐸 Flatwoods Salamander 🚁 Helicopter 🏖 High Recreational Beach 🐠 Manatee 	<ul style="list-style-type: none"> ⚓ Marina 🏠 NERR 🌳 National Park ⚓ Naval Base 👤 Panama City Crayfish ⚡ Power Plant 🦎 Reptile Habitat of Concern 🐢 Sea Turtle Nesting 🐦 Shore Bird Habitat 🌊 Spring 🐟 Sturgeon 💧 Water Intake 🦉 Wildlife Refuge 	<ul style="list-style-type: none"> 🐢 Sea Turtle Nesting Beach 🏠 Federal Managed Areas 🏠 State Managed Areas 🐚 Aquaculture/Oyster 🗺 State Waters/County Line 🚢 USCG Sector Boundary 	<p>Coast Guard Sector Mobile</p> <p>Fish and Wildlife Research Institute</p> <p>0 0.25 0.5 0.75 1 Miles</p>
--	--	---	--	---



Name: D'Olive Bay

Site ID:

AL17-01

Protection Priority (Season): Spring: Summer: Fall: Winter:

Site Description:

GEOSPATIAL INFORMATION

Latitude (DMS): 30° 39' 0.078" N

Longitude (DMS): 87° 55' 38.687"

County: Baldwin

Latitude (DD): 30.650022

Longitude (DD): -87.927413

SCAT Division: Baldwin County Division 3

ESI Map: AL-17

ESI Name: Bridgehead, Ala.

NOAA Chart: 11376_1

CHART Name: MOBILE BAY ALABAMA

USGS Quad: 30087-F8

QUAD Name: Bridgehead

Managed Area (if applicable):

General Location: D'Olive Creek, Yancy Branch

CONTACT INFORMATION

Contacts: ADCNR (24hr) 251-476-1256; AL State Warning Point 800-843-0699; Baldwin County EMA 251-972-6807; USFWS Daphne Field Office 251-441-5181; NRC 800-424-8802; D-8 Duty NOAA SSC (24hr) 206-375-5697; DOI - Regional Environmental Officer 404-331-4524 or 404-852-5414

RESOURCES AT RISK INFORMATION

Shoreline Type: Vegetated, Brackish/fresh marsh

Habitat: Wetlands (Mobile Tensaw Delta), SAV, forested wetlands

Wildlife: Shorebirds, wading birds, waterfowl, gulf sturgeon, shellfish, manatee, blue crab, Alabama red-bellied turtle

Threaten/Endangered Species: Gulf Sturgeon, Alabama Red Bellied Turtle, Bald Eagle, Manatee

Socio-Economic Resources: OSRO

RESPONSE CONSIDERATIONS

Staging Area: Mizell Fish Camp (626-5323), Maecher Park Ramps (968-7576)

Collection Points:

Area Access: Shallow draft vessel

Spill Risk:

Response Resources:

PROTECTION STRATEGY INFORMATION

Tidal Range (FT):

Average Current (KTS):

Ease of Protection: Unknown

Min. Boom Length (FT):

Boom Type:

Booming Method: Deflection, Protection/Exclusion

Protection Strategy: Boom point to protect Mobile Tensaw Delta. Exclusion boom to protect mouth of river as well as diversion boom.



Name: Mouth of Apalachee River

Site ID:

AL17-02

Protection Priority (Season): Spring: Summer: Fall: Winter:

Site Description:

GEOSPATIAL INFORMATION

Latitude (DMS): 30° 40' 22.814"

Longitude (DMS): 87° 57' 8.283" W

County: Baldwin

Latitude (DD): 30.673004

Longitude (DD): -87.952301

SCAT Division: Baldwin County Division 3

ESI Map: AL-17

ESI Name: Bridgehead, Ala.

NOAA Chart: 11376_1

CHART Name: MOBILE BAY ALABAMA

USGS Quad: 30087-F8

QUAD Name: Bridgehead

Managed Area (if applicable):

General Location: There are a few deltas south of 90

CONTACT INFORMATION

Contacts: ADCNR (24hr) 251-476-1256; AL State Warning Point 800-843-0699; Baldwin County EMA 251-972-6807; USFWS Daphne Field Office 251-441-5181; NRC 800-424-8802; D-8 Duty NOAA SSC (24hr) 206-375-5697; DOI - Regional Environmental Officer 404-331-4524 or 404-852-5414

RESOURCES AT RISK INFORMATION

Shoreline Type: fresh/brackish Marsh

Habitat: Wetlands

Wildlife: Shorebirds, wading birds, waterfowl, gulf sturgeon, shellfish, manatee, blue crab, Alabama red-bellied turtle

Threaten/Endangered Species: Alabama Red Bellied Turtle, Gulf Sturgeon, Manatee, Bald Eagle, Woodstork

Socio-Economic Resources: OSRO

RESPONSE CONSIDERATIONS

Staging Area Lake Forest Yacht Club (628-9329), Mizell Fish Camp (626-5823), Chocalotta Fish Camp, Chacaloochee Bay Ramp, Holey Hut Fish Camp, HWY90 and HWY98 Boat Launches, Clay Oyster House

Collection Points:

Area Access: Vehicle, boat, use public boat ramps along causeway

Spill Risk:

Response Resources:

PROTECTION STRATEGY INFORMATION

Tidal Range (FT):

Average Current (KTS):

Ease of Protection: Unknown

Min. Boom Length (FT): 9,000

Boom Type: 24"

Booming Method: Deflection, Protection/Exclusion

Protection Strategy: Boom point to protect Apalachee River. Diversion boom on south side of island depending on tide, current, weather. Exclusion boom on the mouth of the tributaries.



Name: Causeway Culvert (US-98)

Site ID:

AL17-03

Protection Priority (Season): Spring: Summer: Fall: Winter:

Site Description:

GEOSPATIAL INFORMATION

Latitude (DMS): 30° 40' 37.372"

Longitude (DMS): 87° 58' 49.430"

County: Baldwin

Latitude (DD): 30.677048

Longitude (DD): -87.980397

SCAT Division: Baldwin County Division 3

ESI Map: AL-17

ESI Name: Bridgehead, Ala.

NOAA Chart: 11376_1

CHART Name: MOBILE BAY ALABAMA

USGS Quad: 30087-F8

QUAD Name: Bridgehead

Managed Area (if applicable):

General Location: US-98 (Causeway)Chacaloochee Bay

CONTACT INFORMATION

Contacts: ADCNR (24hr) 251-476-1256; AL State Warning Point 800-843-0699; Baldwin County EMA 251-972-6807; USFWS Daphne Field Office 251-441-5181; NRC 800-424-8802; D-8 Duty NOAA SSC (24hr) 206-375-5697; DOI - Regional Environmental Officer 404-331-4524 or 404-852-5414

RESOURCES AT RISK INFORMATION

Shoreline Type: Road Bed, Vegetated Shores, fresh/brackish marsh, exposed man-made structures

Habitat: Shallow Bay, submerged aquatic vegetation

Wildlife: Shorebirds, wading birds, waterfowl, gulf sturgeon, shellfish, manatee, blue crab, Alabama red-bellied turtle

Threaten/Endangered Species: Alabama Red Bellied Turtle, Gulf Sturgeon

Socio-Economic Resources: Recreational fishing

RESPONSE CONSIDERATIONS

Staging Area: Causeway Boat Ramps, meaher state park

Collection Points:

Area Access: Vehicle, boat

Spill Risk: I-10 Causeway

Response Resources:

PROTECTION STRATEGY INFORMATION

Tidal Range (FT):

Average Current (KTS):

Ease of Protection: Unknown

Min. Boom Length (FT):

Boom Type:

Booming Method: Containment, Protection/Exclusion

Protection Strategy: Boom culvert to protect Chacaloochee Bay.



Facility Name: Scott's Landing

Site ID:

Data Collector (Agency): USCG

Survey Type: Planning

Survey Date: 2008-01-16 00:00

Managing Agency: Scott's Landing

General Manager/Contact Person:

Contact Phone #:

SCAT Description: Baldwin County Division 3

Physical Address: 5901 Battleship Pkwy

City: Spanish Fort

State: Alabama

Zip Code 36527

County: Baldwin

GEOSPATIAL INFORMATION

Latitude (DMS): 30° 40' 5.382" N

Longitude (DMS): 87° 55' 20.946" W

Latitude (DD): 30.66816166

Longitude (DD): -87.92248500

SITE DESCRIPTION

Site Type: Staging Area; Boat Ramp

Access: Private

Operational Status:

Scale of Staging Area:

Hours of Operation: Sunrise to Sunset

Days of Operation: 7 days a week

Water Type: Brackish

Water Body Name: Blakely River

Boat Launch Capability: Boats Under 25 ft

Number of Boat Ramps: 1

Number of Boat Ramp Lanes: 1

Number of Boat Slips: 0

Number of Moorings: 0

Boat Ramp Surface Composition: Poured in Place Concrete

Water Depth at End of Boat Ramp: 4 - 6 feet

Wave Energy at Site: Low

Shoreline Type in Viewable Viscinity: Sand/Clay/Mud; Tidal Marsh

Access Constraints: No Access Constraints

Crane Capabilities: Suitable for small crane

Collection Point Capabilities:

Parking Capacity for Trailers: 8

Parking Capacity for Cars: 15

Parking Lot Dimensions:

Parking Surface: Dirt/Gravel

Capable for Light or Heavy Equipment and Type:

Boom Available On-Site and Length:

ADDITIONAL AMMENITIES

Fuels Available: No Fuel

Propane or Natural Gas Available

Water Available: Yes

Fire Hydrant:

Pumpout Available: No Pumpout

Bathrooms Available: Restroom Facilities

Electricity Amperage Available: No Electricity Available

Camping Facilities:

Food Available: None

Security Available and Hours On Duty:

GENERAL INFORMATION AND COMMENTS

Special/Pre-Planned Events and Dates:

Comments:

Photo URL:



Facility Name: Meaher State Park

Site ID:

Data Collector (Agency): State of Florida

Survey Type: Planning

Survey Date: 2008-03-11 00:00

Managing Agency:

General Manager/Contact Person:

Contact Phone #: 251-626-5529

SCAT Description: Baldwin County Division 3

Physical Address: 5200 Battleship Pkwy. E

City: Spanish Fort

State: Alabama

Zip Code 36577

County: Baldwin

GEOSPATIAL INFORMATION

Latitude (DMS): 30° 40' 28.338" N

Longitude (DMS): 87° 55' 45.342" W

Latitude (DD): 30.67453833

Longitude (DD): -87.92926166

SITE DESCRIPTION

Site Type: Staging Area; Boat Ramp

Access: Public

Operational Status:

Scale of Staging Area:

Hours of Operation: 6 am - 3 pm

Days of Operation: Open regular schedule, ie. M - F

Water Type: Brackish

Water Body Name: Blakely River

Boat Launch Capability: No Ramp

Number of Boat Ramps: 0

Number of Boat Ramp Lanes: 0

Number of Boat Slips: 0

Number of Moorings: 0

Boat Ramp Surface Composition:

Water Depth at End of Boat Ramp: 2 - 4 feet

Wave Energy at Site: Low

Shoreline Type in Viewable Viscinity: Seawall

Access Constraints: Fenced

Crane Capabilities: Suitable for small crane

Collection Point Capabilities:

Parking Capacity for Trailers: 0

Parking Capacity for Cars: 150

Parking Lot Dimensions:

Parking Surface: Multiple Paved Surfaces

Capable for Light or Heavy Equipment and Type:

Boom Available On-Site and Length:

ADDITIONAL AMMENITIES

Fuels Available: No Fuel

Propane or Natural Gas Available

Water Available: Yes

Fire Hydrant:

Pumpout Available: No Pumpout

Bathrooms Available: Restroom Facilities

Electricity Amperage Available: 120 V Standard 15 Amp

Camping Facilities:

Food Available: Food Available (1-5 mi.)

Security Available and Hours On Duty:

GENERAL INFORMATION AND COMMENTS

Special/Pre-Planned Events and Dates:

Comments:

Photo URL:



Facility Name: Buzbee Launch

Site ID:

Data Collector (Agency): State of Alabama

Survey Type: Planning

Survey Date: 2008-01-24 00:00

Managing Agency:

General Manager/Contact Person:

Contact Phone #:

SCAT Description: Baldwin County Division 3

Physical Address: 32500 AL 225

City: Spanish Fort

State: Alabama

Zip Code 36527

County: Baldwin

GEOSPATIAL INFORMATION

Latitude (DMS): 30° 41' 57.534" N

Longitude (DMS): 87° 54' 6.786" W

Latitude (DD): 30.69931500

Longitude (DD): -87.90188499

SITE DESCRIPTION

Site Type: Boat Ramp

Access: Private

Operational Status:

Scale of Staging Area:

Hours of Operation: Sunrise to Sunset

Days of Operation: 7 days a week

Water Type: Fresh

Water Body Name: Bay Minette

Boat Launch Capability: Boats Under 25 ft

Number of Boat Ramps: 1

Number of Boat Ramp Lanes: 1

Number of Boat Slips: 0

Number of Moorings: 0

Boat Ramp Surface Composition: Clay; Gravel/Dirt

Water Depth at End of Boat Ramp: 2 - 4 feet

Wave Energy at Site: Low

Shoreline Type in Viewable Viscinity: Sand/Clay/Mud; Gravel or Cobble

Access Constraints: No Access Constraints

Crane Capabilities: Not suitable for crane

Collection Point Capabilities:

Parking Capacity for Trailers: 10

Parking Capacity for Cars: 20

Parking Lot Dimensions:

Parking Surface: Dirt/Gravel; Grass

Capable for Light or Heavy Equipment and Type:

Boom Available On-Site and Length:

ADDITIONAL AMMENITIES

Fuels Available: No Fuel

Propane or Natural Gas Available

Water Available: No Water

Fire Hydrant:

Pumpout Available: No Pumpout

Bathrooms Available: No Restrooms

Electricity Amperage Available: No Electricity Available

Camping Facilities:

Food Available: Food Available (1-5 mi.)

Security Available and Hours On Duty:

GENERAL INFORMATION AND COMMENTS

Special/Pre-Planned Events and Dates:

Comments:

Photo URL:



Facility Name: Daphne Bayfront Park

Site ID:

Data Collector (Agency): USCG

Survey Type: Planning

Survey Date: 2008-01-16 00:00

Managing Agency: City of Daphne

General Manager/Contact Person:

Contact Phone #: 251-626-5300

SCAT Description: Baldwin County Division 3

Physical Address: 6200 Bayfront Drive

City: Daphne

State: Alabama

Zip Code 36526

County: Baldwin

GEOSPATIAL INFORMATION

Latitude (DMS): 30° 37' 48.180" N

Longitude (DMS): 87° 55' 6.492" W

Latitude (DD): 30.63005000

Longitude (DD): -87.91846999

SITE DESCRIPTION

Site Type: Staging Area

Access: Public

Operational Status:

Scale of Staging Area:

Hours of Operation:

Days of Operation: 24/7

Water Type: Salt

Water Body Name: Mobile Bay

Boat Launch Capability:

Number of Boat Ramps: 0

Number of Boat Ramp Lanes: 0

Number of Boat Slips: 0

Number of Moorings: 0

Boat Ramp Surface Composition:

Water Depth at End of Boat Ramp: 4 - 6 feet

Wave Energy at Site: Medium

Shoreline Type in Viewable Vicinity: Sand/Clay/Mud; Soft Sand; Tidal Marsh

Access Constraints: No Access Constraints

Crane Capabilities: Not suitable for crane

Collection Point Capabilities:

Parking Capacity for Trailers: 4

Parking Capacity for Cars: 15

Parking Lot Dimensions:

Parking Surface: Dirt/Gravel

Capable for Light or Heavy Equipment and Type:

Boom Available On-Site and Length:

ADDITIONAL AMMENITIES

Fuels Available: No Fuel

Propane or Natural Gas Available

Water Available: No Water

Fire Hydrant:

Pumpout Available: No Pumpout

Bathrooms Available: Port-a-Pottie

Electricity Amperage Available: No Electricity Available

Camping Facilities:

Food Available: None

Security Available and Hours On Duty:

GENERAL INFORMATION AND COMMENTS

Special/Pre-Planned Events and Dates:

Comments:

Photo URL:



Facility Name: Lake Forest Yacht Club

Site ID:

Data Collector (Agency): USCG

Survey Type: Planning

Survey Date: 2008-01-16 00:00

Managing Agency: Lake Forest Yacht Club

General Manager/Contact Person: Chris Bailey - Harbormaster

Contact Phone #: 251-626-4521 office

SCAT Description: Baldwin County Division 3

Physical Address: #3 Yacht Club Drive

City: Daphne

State: Alabama

Zip Code 36526

County: Baldwin

GEOSPATIAL INFORMATION

Latitude (DMS): 30° 38' 18.348" N

Longitude (DMS): 87° 54' 58.566" W

Latitude (DD): 30.63843000

Longitude (DD): -87.91626833

SITE DESCRIPTION

Site Type: Boat Ramp; Marina

Access: Private

Operational Status:

Scale of Staging Area:

Hours of Operation: Sunrise to Sunset

Days of Operation: 7 days

Water Type: Salt

Water Body Name: Mobile Bay

Boat Launch Capability: Boats Under 25 ft

Number of Boat Ramps: 1

Number of Boat Ramp Lanes: 1

Number of Boat Slips: 35

Number of Moorings: 40

Boat Ramp Surface Composition: Poured in Place Concrete

Water Depth at End of Boat Ramp: 4 - 6 feet; 6 - 8 feet

Wave Energy at Site: Medium

Shoreline Type in Viewable Vicinity: Seawall; Sand/Clay/Mud; Tidal Marsh

Access Constraints: No Access Constraints

Crane Capabilities: Not suitable for crane

Collection Point Capabilities:

Parking Capacity for Trailers: 4

Parking Capacity for Cars: 15

Parking Lot Dimensions:

Parking Surface: Paved - Concrete or Asphalt; Dirt/Gravel; Grass

Capable for Light or Heavy Equipment and Type:

Boom Available On-Site and Length:

ADDITIONAL AMMENITIES

Fuels Available: Gasoline

Propane or Natural Gas Available

Water Available: Yes

Fire Hydrant:

Pumpout Available: No Pumpout

Bathrooms Available: Restroom Facilities

Electricity Amperage Available: 120 V Standard 15 Amp

Camping Facilities:

Food Available: On-Site Restaurant

Security Available and Hours On Duty:

GENERAL INFORMATION AND COMMENTS

Special/Pre-Planned Events and Dates:

Comments:

Photo URL:



Facility Name: Meaher Landing

Site ID:

Data Collector (Agency): USCG

Survey Type: Planning

Survey Date: 2008-01-16 00:00

Managing Agency: AL Dept of Conservation and Natural Resources

General Manager/Contact Person:

Contact Phone #:

SCAT Description: Baldwin County Division 3

Physical Address: 5200 Battleship Parkway

City: Spanish Fort

State: Alabama

Zip Code 36527

County: Baldwin

GEOSPATIAL INFORMATION

Latitude (DMS): 30° 39' 57.834" N

Longitude (DMS): 87° 55' 52.116" W

Latitude (DD): 30.66606500

Longitude (DD): -87.93114333

SITE DESCRIPTION

Site Type: Staging Area; Boat Ramp

Access: Public

Operational Status:

Scale of Staging Area:

Hours of Operation: 24 hours

Days of Operation: 7 days a week

Water Type: Brackish

Water Body Name: Blakely River

Boat Launch Capability: RAMP - Boats UNDER 25 FT; RAMP - Boats OVER 25 FT

Number of Boat Ramps: 2

Number of Boat Ramp Lanes: 2

Number of Boat Slips: 0

Number of Moorings: 0

Boat Ramp Surface Composition:

Water Depth at End of Boat Ramp: 4 - 6 feet; 6 - 8 feet

Wave Energy at Site: Medium

Shoreline Type in Viewable Viscinity: Sand/Clay/Mud; Tidal Marsh

Access Constraints: Heavy Vegetation

Crane Capabilities: Not suitable for crane

Collection Point Capabilities:

Parking Capacity for Trailers: 10

Parking Capacity for Cars: 20

Parking Lot Dimensions:

Parking Surface: Paved - Concrete or Asphalt

Capable for Light or Heavy Equipment and Type:

Boom Available On-Site and Length:

ADDITIONAL AMMENITIES

Fuels Available: No Fuel

Propane or Natural Gas Available

Water Available: No Water

Fire Hydrant:

Pumpout Available: No Pumpout

Bathrooms Available: Port-a-Pottie

Electricity Amperage Available: No Electricity Available

Camping Facilities:

Food Available: None

Security Available and Hours On Duty:

GENERAL INFORMATION AND COMMENTS

Special/Pre-Planned Events and Dates:

Comments:

Photo URL:



Facility Name: Chocolotta Ramp

Site ID:

Data Collector (Agency): USCG

Survey Type: Planning

Survey Date: 2008-01-16 00:00

Managing Agency: AL Dept of Conservation and Natural Resources

General Manager/Contact Person:

Contact Phone #:

SCAT Description: Baldwin County Division 3

Physical Address: 3101 Battleship Parkway

City: Spanish Fort

State: Alabama

Zip Code 36527

County: Baldwin

GEOSPATIAL INFORMATION

Latitude (DMS): 30° 40' 45.642" N

Longitude (DMS): 87° 59' 33.408" W

Latitude (DD): 30.67934500

Longitude (DD): -87.99261333

SITE DESCRIPTION

Site Type: Staging Area; Boat Ramp

Access: Public

Operational Status:

Scale of Staging Area:

Hours of Operation: 24 hours

Days of Operation: 7 days a week

Water Type: Brackish

Water Body Name: Chacalochee Bay

Boat Launch Capability: RAMP - Boats UNDER 25 FT; RAMP - Boats OVER 25 FT

Number of Boat Ramps: 2

Number of Boat Ramp Lanes: 4

Number of Boat Slips: 0

Number of Moorings: 4

Boat Ramp Surface Composition:

Water Depth at End of Boat Ramp: 4 - 6 feet; 6 - 8 feet

Wave Energy at Site: Medium

Shoreline Type in Viewable Viscinity: Sand/Clay/Mud; Tidal Marsh

Access Constraints: No Access Constraints

Crane Capabilities: Not suitable for crane

Collection Point Capabilities:

Parking Capacity for Trailers: 20

Parking Capacity for Cars: 25

Parking Lot Dimensions:

Parking Surface: Paved - Concrete or Asphalt

Capable for Light or Heavy Equipment and Type:

Boom Available On-Site and Length:

ADDITIONAL AMMENITIES

Fuels Available: No Fuel

Propane or Natural Gas Available

Water Available: No Water

Fire Hydrant:

Pumpout Available: No Pumpout

Bathrooms Available: No Restrooms

Electricity Amperage Available: No Electricity Available

Camping Facilities:

Food Available: None

Security Available and Hours On Duty:

GENERAL INFORMATION AND COMMENTS

Special/Pre-Planned Events and Dates:

Comments:

Photo URL:

