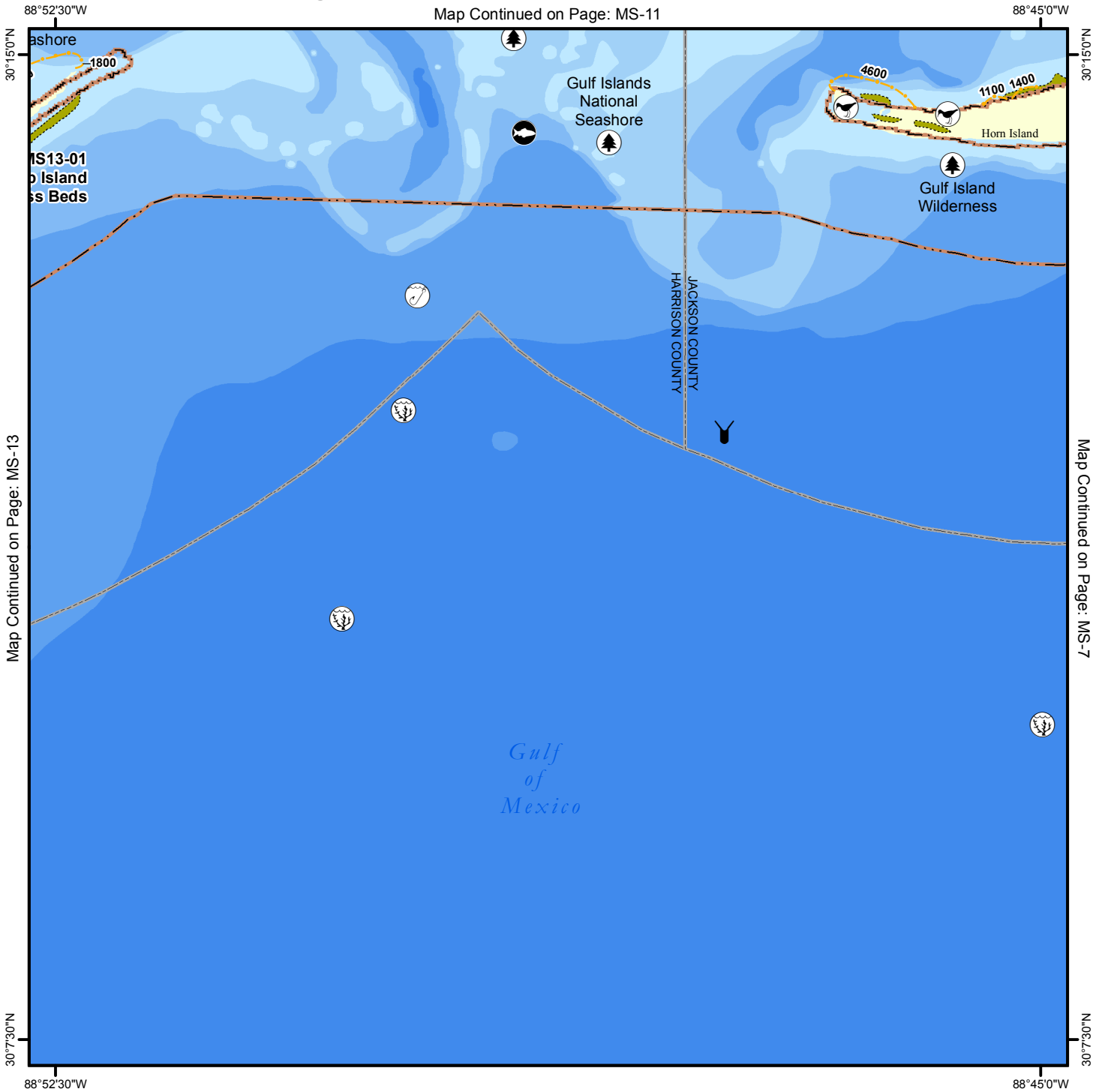


Geographic Response Plan Map: MS-12

Map Continued on Page: MS-11



Map Continued on Page: MS-13

Map Continued on Page: MS-7

<p>Environmentally Sensitive Areas</p> <p>Summer Protection Priority</p> <ul style="list-style-type: none"> ◆◆ A - Protect First ◆◆ B - Protect after A Areas ◆ C - Protect after B Areas <p>Response Methods</p> <ul style="list-style-type: none"> Y Skimmer Shallow Water Skimmer ▲ Collection Point ▲ Natural Collection Points General Booming Strategy (Length in Feet) Incident Command Posts Staging Areas Oil Spill Risk Sites Equipment Storage Locations Beach or Water Access 	<p>Bio-Socioeconomic</p> <ul style="list-style-type: none"> Airport Aquaculture Aquatic Preserve/State Park Artificial Reef/Hardbottom Beach Mouse Habitat Black Bear Habitat Boat Ramp Coast Guard Diving Flatwoods Salamander Heliport High Recreational Beach Manatee 	<ul style="list-style-type: none"> Marina NERR National Park Naval Base Panama City Crayfish Power Plant Reptile Habitat of Concern Sea Turtle Nesting Shore Bird Habitat Spring Sturgeon Water Intake Wildlife Refuge 	<ul style="list-style-type: none"> Sea Turtle Nesting Beach Federal Managed Areas State Managed Areas Aquaculture/Oysters State Waters/County Line USCG Sector Boundary
---	--	---	---

Sector Mobile Area Committee

Fish and Wildlife Research Institute

0 0.5 1 1.5 2 Miles