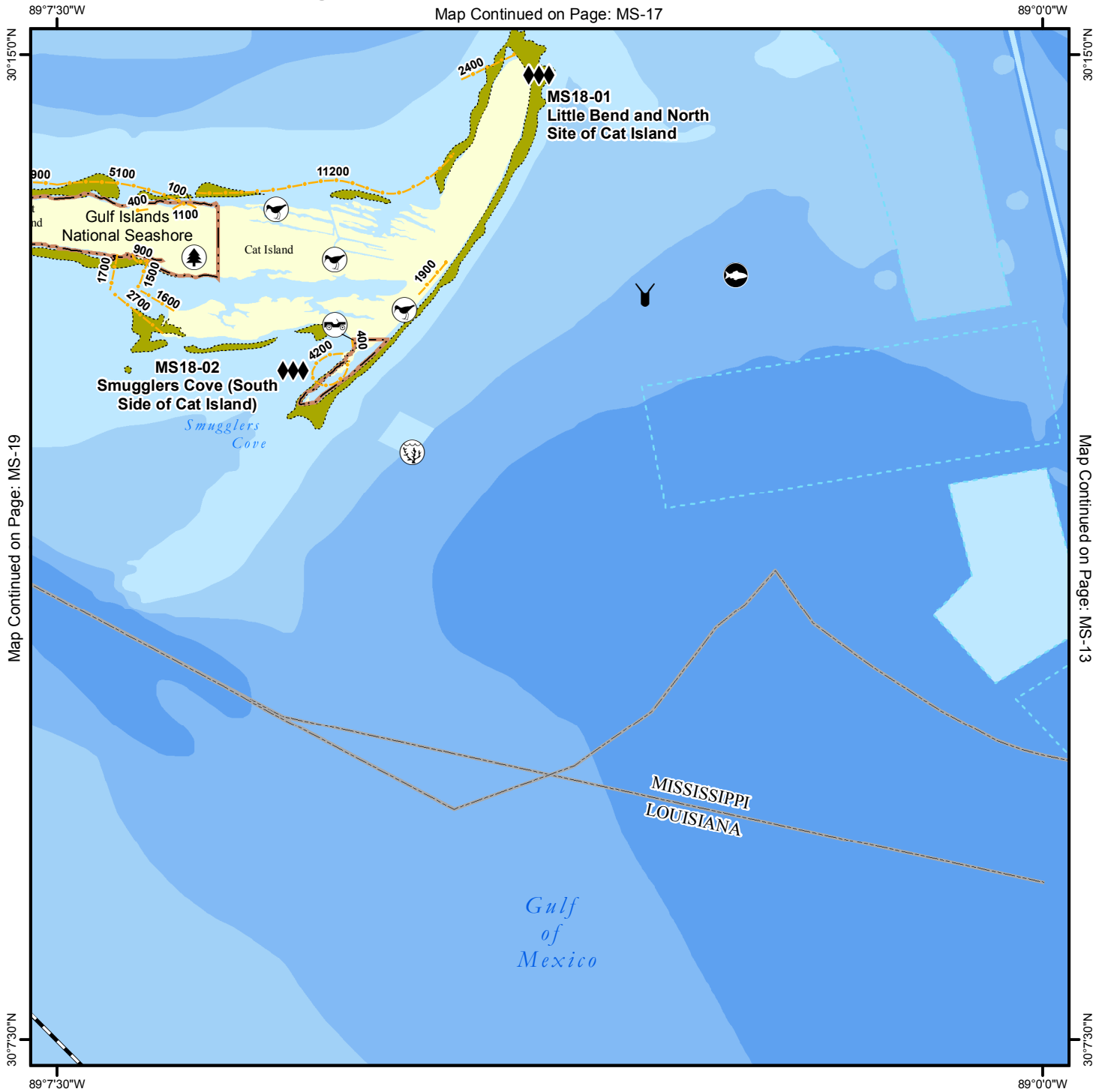


Geographic Response Plan Map: MS-18

Map Continued on Page: MS-17



Map Continued on Page: MS-19

Map Continued on Page: MS-13

<p>Environmentally Sensitive Areas</p> <p>Summer Protection Priority</p> <ul style="list-style-type: none"> ◆◆ A - Protect First ◆◆ B - Protect after A Areas ◆ C - Protect after B Areas <p>Response Methods</p> <ul style="list-style-type: none"> Y Skimmer ☉ Shallow Water Skimmer ▲ Collection Point ▲ Natural Collection Points — General Booming Strategy (Length in Feet) ▣ Incident Command Posts ⊙ Staging Areas Ⓡ Oil Spill Risk Sites ⓔ Equipment Storage Locations ☉ Beach or Water Access 	<p>Bio-Socioeconomic</p> <ul style="list-style-type: none"> ✈ Airport ⊙ Aquaculture ⊙ Aquatic Preserve/State Park ⊙ Artificial Reef/Hardbottom ⊙ Beach Mouse Habitat ⊙ Black Bear Habitat ⊙ Boat Ramp ⊙ Coast Guard ⊙ Diving ⊙ Flatwoods Salamander ⊙ Heliport ⊙ High Recreational Beach ⊙ Manatee 	<ul style="list-style-type: none"> ⊙ Marina ⊙ NERR ⊙ National Park ⊙ Naval Base ⊙ Panama City Crayfish ⚡ Power Plant ⊙ Reptile Habitat of Concern ⊙ Sea Turtle Nesting ⊙ Shore Bird Habitat ⊙ Spring ⊙ Sturgeon ⊙ Water Intake ⊙ Wildlife Refuge 	<ul style="list-style-type: none"> 🌿 Sea Turtle Nesting Beach 🏠 Federal Managed Areas 🏠 State Managed Areas 🐚 Aquaculture/Oysters 📏 State Waters/County Line 🚢 USCG Sector Boundary
---	--	---	---

Sector Mobile Area Committee

N
S
E
W

Fish and Wildlife Research Institute

0 0.5 1 1.5 2 Miles

Name: Little Bend and North Site of Cat Island

Site ID:

MS18-01

Protection Priority (Season): Spring: Summer: Fall: Winter:

Site Description: Sandy beach, seagrass beds, tidal saltmarsh, intertidal wetlands

GEOSPATIAL INFORMATION

Latitude (DMS): 30° 14' 50.790"

Longitude (DMS): 89° 3' 49.923" W

County: Harrison

Latitude (DD): 30.247442

Longitude (DD): -89.063868

SCAT Division: Harrison County Division 1

ESI Map: MS-18

ESI Name: Cat Island, MS-LA.

NOAA Chart: 11373_1

CHART Name: MISSISSIPPI SND & APPROACHES DAUPHIN ISL TO CAT ISL

USGS Quad: 30089-B1

QUAD Name: Cat Island

Managed Area (if applicable): private landowners, State of Mississippi

General Location: North side of Cat Island

CONTACT INFORMATION

Contacts: USFWS Daphne Field Office 251-441-5181; MS DEQ (State Emergency Responder) 228-326-6401; Harrison County EOC 228-865-4002 or 228-323-6420 (Dir); MS DMR (24hr) 228-374-5000; Mississippi State EOC 601-933-6875; Private Landowners; NRC 800-424-8802; D-8 Duty NOAA SSC (24hr) 206-375-5697; DOI - Regional Environmental Officer 404-331-4524 or 404-852-5414

RESOURCES AT RISK INFORMATION

Shoreline Type: Fine Sandy Beaches, Coarse Sand Beach, Salt and brackish water marshes, sandy beach, exposed tidal flats

Habitat: Seagrass beds, fine sandy beaches, exposed tidal flats, bird nesting habitat, salt and brackish water marshes- nursery and spawning area for many fish and inverts

Wildlife: Raptors, Shorebirds, Wading birds, Diving Birds, Plovers, Waterfowl, Sea Turtles, Snakes, marine mammals, possible Gulf Sturgeon (T), Alligators

Threaten/Endangered Species: Wilson's Plover, Piping Plover, Snowy Plover, Bald eagle, Peregrine falcon, Brown pelican, American alligator, Gulf Sturgeon, Manatee, Sea Turtles (Kemp's Ridley, Loggerhead)

Socio-Economic Resources: Archaeological sites throughout, recreational beach, recreational and commercial fishing

RESPONSE CONSIDERATIONS

Staging Area: Pass Christian Harbor, Long Beach Marina, Gulfport Boat Ramp

Collection Points: on beach, offshore on-water skimmer

Area Access: Shallow draft vessel, Helicopter,

Spill Risk: Vessel traffic (fuel barge)

Response Resources: USCG Gulfport, MS DMR Marine Patrol

PROTECTION STRATEGY INFORMATION

Tidal Range (FT): 2

Average Current (KTS): 0-3

Ease of Protection: Hard

Min. Boom Length (FT): 10,000

Boom Type: Hard, sorbent

Booming Method: Deflection, Protection/Exclusion, Ensnarement

Protection Strategy: Deploy diversion boom (sorbent) especially during low tide to prevent intrusion into seagrass, marsh and beaches. Deploy diversion boom to direct oil away from northside of island to natural collection points. Diversion boom to deflect plume to north tip of island.



Name: Smugglers Cove (South Side of Cat Island)

Site ID:

MS18-02

Protection Priority (Season): Spring: Summer: Fall: Winter:

Site Description: Sandy beach with extensive tidal mud flats

GEOSPATIAL INFORMATION

Latitude (DMS): 30° 12' 35.719"

Longitude (DMS): 89° 5' 42.130" W

County: Harrison

Latitude (DD): 30.209922

Longitude (DD): -89.095036

SCAT Division: Harrison County Division 1

ESI Map: MS-18

ESI Name: Cat Island, MS-LA.

NOAA Chart: 11373_1

CHART Name: MISSISSIPPI SND & APPROACHES DAUPHIN ISL TO CAT ISL

USGS Quad: 30089-B1

QUAD Name: Cat Island

Managed Area (if applicable): Federal Govt, National Park Service

General Location:

CONTACT INFORMATION

Contacts: NPS-Gulf Islands National Seashore (Mississippi Main Office) 228-875-9057; Harrison County EOC 228-865-4002 or 228-323-6420 (Director); Mississippi State EOC 601-933-6875; MS SHPO 601-576-6940; MS DEQ (State Emergency Responder) 228-326-6401; NRC 800-424-8802; D-8 Duty NOAA SSC (24hr) 206-375-5697; DOI - Regional Environmental Officer 404-331-4524 or 404-852-5414

RESOURCES AT RISK INFORMATION

Shoreline Type: Fine-Sand beach, Salt marsh

Habitat: Seagrass beds, salt marsh, fine sandy beaches, tidal mud flats

Wildlife: Waterfowl, Wading birds, shorebirds, Gulls, Terns, diving birds, sea turtles, possible Gulf Sturgeon (T)

Threaten/Endangered Species: Piping plover, Kemp's Ridley and Leatherback Sea Turtles

Socio-Economic Resources: Archaeological sites throughout, recreational beach, recreational and commercial fishing and boating

RESPONSE CONSIDERATIONS

Staging Area: Long Beach Marina, Pass Christian Harbor, Gulfport Boat Ramp

Collection Points: On beach, off-shore on-water skimmers

Area Access: Boat

Spill Risk: vessel transportation (fuel barges)

Response Resources: USCG Gulfport, MS DMR Marine Patrol

PROTECTION STRATEGY INFORMATION

Tidal Range (FT): 2

Average Current (KTS): 0-3

Ease of Protection: Hard

Min. Boom Length (FT):

Boom Type: Hard, sorbent

Booming Method: Containment, Protection/Exclusion, Ensnarement

Protection Strategy: Exclusion/sorbent boom to keep oil out of marsh and tributaries in cove. Deploy exclusion/sorbent boom to prevent intrusion into saltwater marsh inlets, sandy beaches. Deploy exclusion boom across mouth of inlets along north and south shorelines on the east-west Spit of Cat Island and across Mouth of South Bayou to protect sensitive saltwater marsh.

