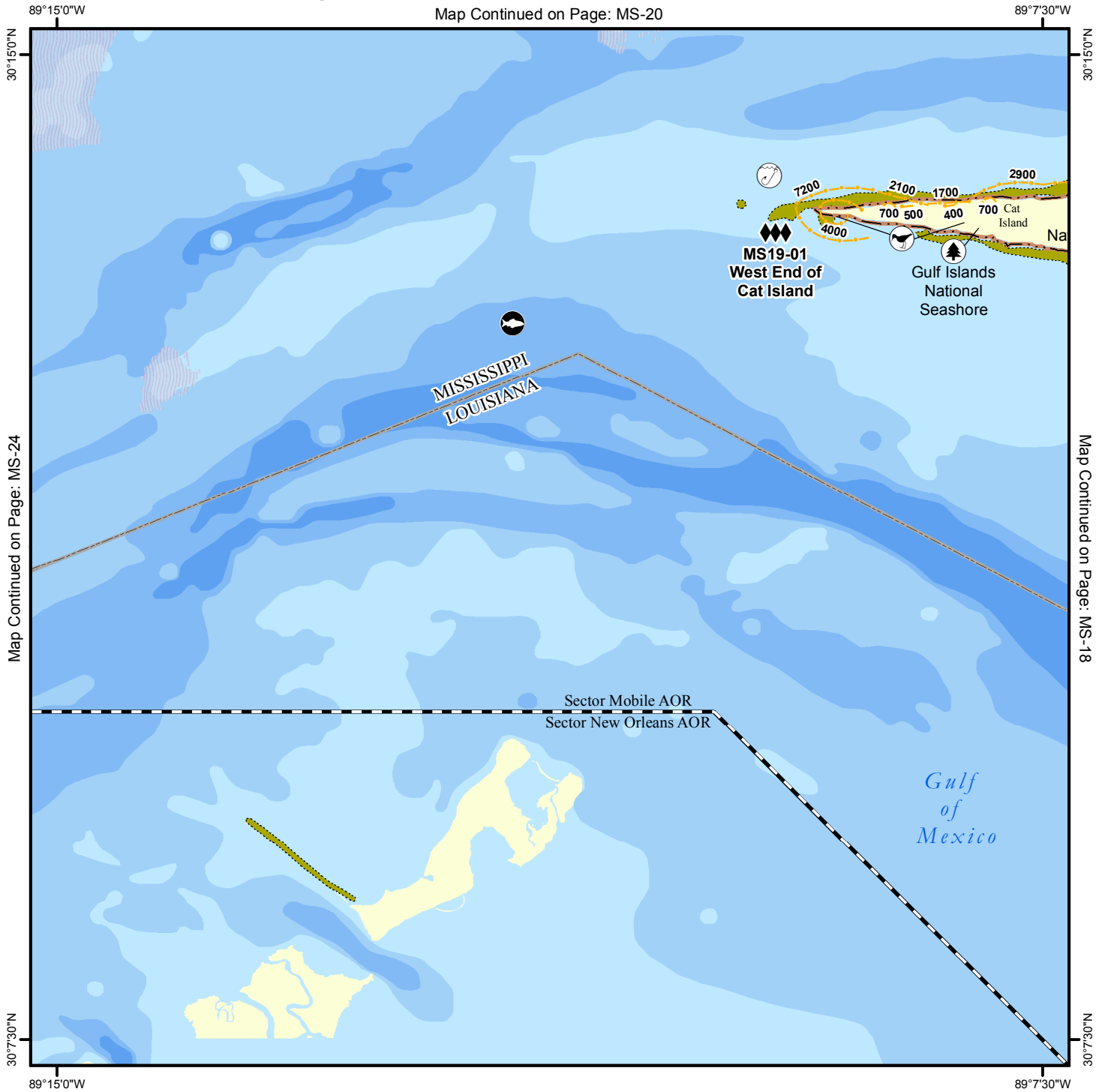


# Geographic Response Plan Map: MS-19

Map Continued on Page: MS-20



Map Continued on Page: MS-24

Map Continued on Page: MS-18

<p><b>Environmentally Sensitive Areas</b></p> <p><b>Summer Protection Priority</b></p> <ul style="list-style-type: none"> <li>◆◆ A - Protect First</li> <li>◆◆ B - Protect after A Areas</li> <li>◆ C - Protect after B Areas</li> </ul> <p><b>Response Methods</b></p> <ul style="list-style-type: none"> <li>Y Skimmer</li> <li>☉ Shallow Water Skimmer</li> <li>▲ Collection Point</li> <li>▲ Natural Collection Points</li> <li>👤 General Booming Strategy (Length in Feet)</li> <li>▣ Incident Command Posts</li> <li>⊙ Staging Areas</li> <li>Ⓜ Oil Spill Risk Sites</li> <li>Ⓜ Equipment Storage Locations</li> <li>🚶 Beach or Water Access</li> </ul>	<p><b>Bio-Socioeconomic</b></p> <ul style="list-style-type: none"> <li>✈ Airport</li> <li>🐟 Aquaculture</li> <li>🌿 Aquatic Preserve/State Park</li> <li>🏠 Artificial Reef/Hardbottom</li> <li>🐭 Beach Mouse Habitat</li> <li>🐻 Black Bear Habitat</li> <li>🚤 Boat Ramp</li> <li>🚢 Coast Guard</li> <li>🤿 Diving</li> <li>🐸 Flatwoods Salamander</li> <li>🚁 Heliport</li> <li>🏖 High Recreational Beach</li> <li>🐬 Manatee</li> </ul>	<ul style="list-style-type: none"> <li>⚓ Marina</li> <li>🏠 NERR</li> <li>🌲 National Park</li> <li>⚓ Naval Base</li> <li>🐞 Panama City Crayfish</li> <li>⚡ Power Plant</li> <li>🦎 Reptile Habitat of Concern</li> <li>🐢 Sea Turtle Nesting</li> <li>🐦 Shore Bird Habitat</li> <li>🌊 Spring</li> <li>🐟 Sturgeon</li> <li>💧 Water Intake</li> <li>🌳 Wildlife Refuge</li> </ul>	<ul style="list-style-type: none"> <li>🐢 Sea Turtle Nesting Beach</li> <li>🏠 Federal Managed Areas</li> <li>🏠 State Managed Areas</li> <li>🐟 Aquaculture/Oysters</li> <li>📏 State Waters/County Line</li> <li>🚢 USCG Sector Boundary</li> </ul>
---	--	---	---

Sector Mobile Area Committee

Fish and Wildlife Research Institute

0 0.5 1 1.5 2 Miles

Name: West End of Cat Island

Site ID:

MS19-01

Protection Priority (Season): Spring:  Summer:  Fall:  Winter: 

Site Description: Sand beach, salt marsh shoreline, interior wetlands, salt/brackish/freshwater inlets on north (5 total) and south (3 total) shores

## GEOSPATIAL INFORMATION

Latitude (DMS): 30° 13' 53.391"

Longitude (DMS): 89° 8' 54.521" W

County: Harrison

Latitude (DD): 30.231498

Longitude (DD): -89.148478

SCAT Division: Harrison County Division 1

ESI Map: MS-19

ESI Name: Isle Au Pitre, LA.-MS

NOAA Chart 11371\_1

CHART Name LAKE BORGNE &amp; APPROACHES CAT ISL TO POINT AUX HERBES

USGS Quad: 30089-B2

QUAD Name: Isle Au Pitre

Managed Area (if applicable):

General Location:

## CONTACT INFORMATION

Contacts: NPS-Gulf Islands National Seashore (Mississippi Main Office) 228-875-9057; NRC 800-424-8802; D-8 Duty NOAA SSC (24hr) 206-375-5697; DOI - Regional Environmental Officer 404-331-4524 or 404-852-5414

## RESOURCES AT RISK INFORMATION

Shoreline Type: Salt and brackish water marshes

Habitat: Bird nesting habitat, Salt and brackish water marshes- nursery and spawning area for many fish and inverts.

Wildlife: Wading Birds, Shorebirds, Small Mammals, Waterfowl, Raptors, Turtles, possible Gulf Sturgeon (T)

Threaten/Endangered Species: Piping Plover, Snowy Plover, Wilson's Plover, Bald eagle, Peregrine falcon, Brown pelican, American alligator. Throughout- gulf sturgeon and manatee. Sea Turtles (Kemp's Ridley, Loggerhead, Leatherback)

Socio-Economic Resources: Archaeological sites throughout, recreational beach, Recreational fishing, camping

## RESPONSE CONSIDERATIONS

Staging Area Pass Christian Harbor, Gulfport Harbor, Long Beach Marina

Collection Points: On beach, off-shore on-water skimmers

Area Access: Boat

Spill Risk: vessel transportation (fuel barges)

Response Resources: USCG Gulfport

## PROTECTION STRATEGY INFORMATION

Tidal Range (FT): 2

Average Current (KTS): 0-3

Ease of Protection: Hard

Min. Boom Length (FT):

Boom Type: Hard

Booming Method: Deflection, Protection/Exclusion

Protection Strategy: Exclusion boom at threatened shoreline. Diversion boom to deflect plume. Deploy boom to keep contaminants out of inlets and interior wetlands.

