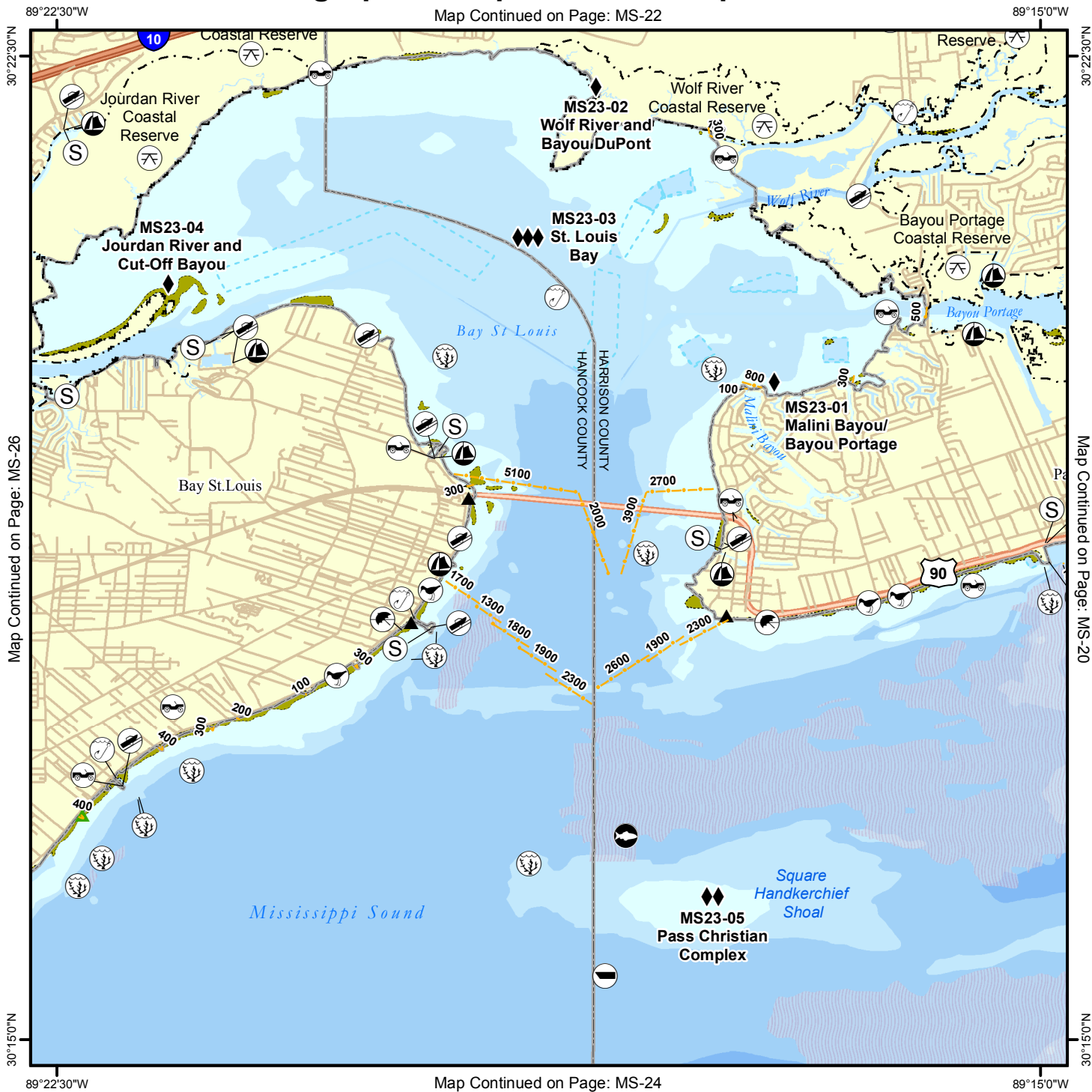


Geographic Response Plan Map: MS-23

Map Continued on Page: MS-22



Map Continued on Page: MS-26

Map Continued on Page: MS-20

Map Continued on Page: MS-24

<p>Environmentally Sensitive Areas</p> <p>Summer Protection Priority</p> <ul style="list-style-type: none"> ◆◆ A - Protect First ◆◆ B - Protect after A Areas ◆ C - Protect after B Areas <p>Response Methods</p> <ul style="list-style-type: none"> Y Skimmer Shallow Water Skimmer ▲ Collection Point ▲ Natural Collection Points General Booming Strategy (Length in Feet) ▣ Incident Command Posts (S) Staging Areas (R) Oil Spill Risk Sites (E) Equipment Storage Locations Beach or Water Access 	<p>Bio-Socioeconomic</p> <ul style="list-style-type: none"> ✈ Airport 🐟 Aquaculture 🌿 Aquatic Preserve/State Park 🏗 Artificial Reef/Hardbottom 🐭 Beach Mouse Habitat 🐻 Black Bear Habitat 🚤 Boat Ramp 🛖 Coast Guard 🤿 Diving 🦎 Flatwoods Salamander 🚁 Helicopter 🏖 High Recreational Beach 🐬 Manatee 	<ul style="list-style-type: none"> ⚓ Marina 🏠 NERR 🌳 National Park ⚓ Naval Base 🐟 Panama City Crayfish ⚡ Power Plant 🦎 Reptile Habitat of Concern 🐢 Sea Turtle Nesting 🐦 Shore Bird Habitat 🌊 Spring 🐟 Sturgeon 💧 Water Intake 🌳 Wildlife Refuge 	<ul style="list-style-type: none"> 🌿 Sea Turtle Nesting Beach 🏠 Federal Managed Areas 🏠 State Managed Areas 🐟 Aquaculture/Oysters 🌊 State Waters/County Line 🚤 USCG Sector Boundary
---	--	---	---

Sector Mobile Area Committee

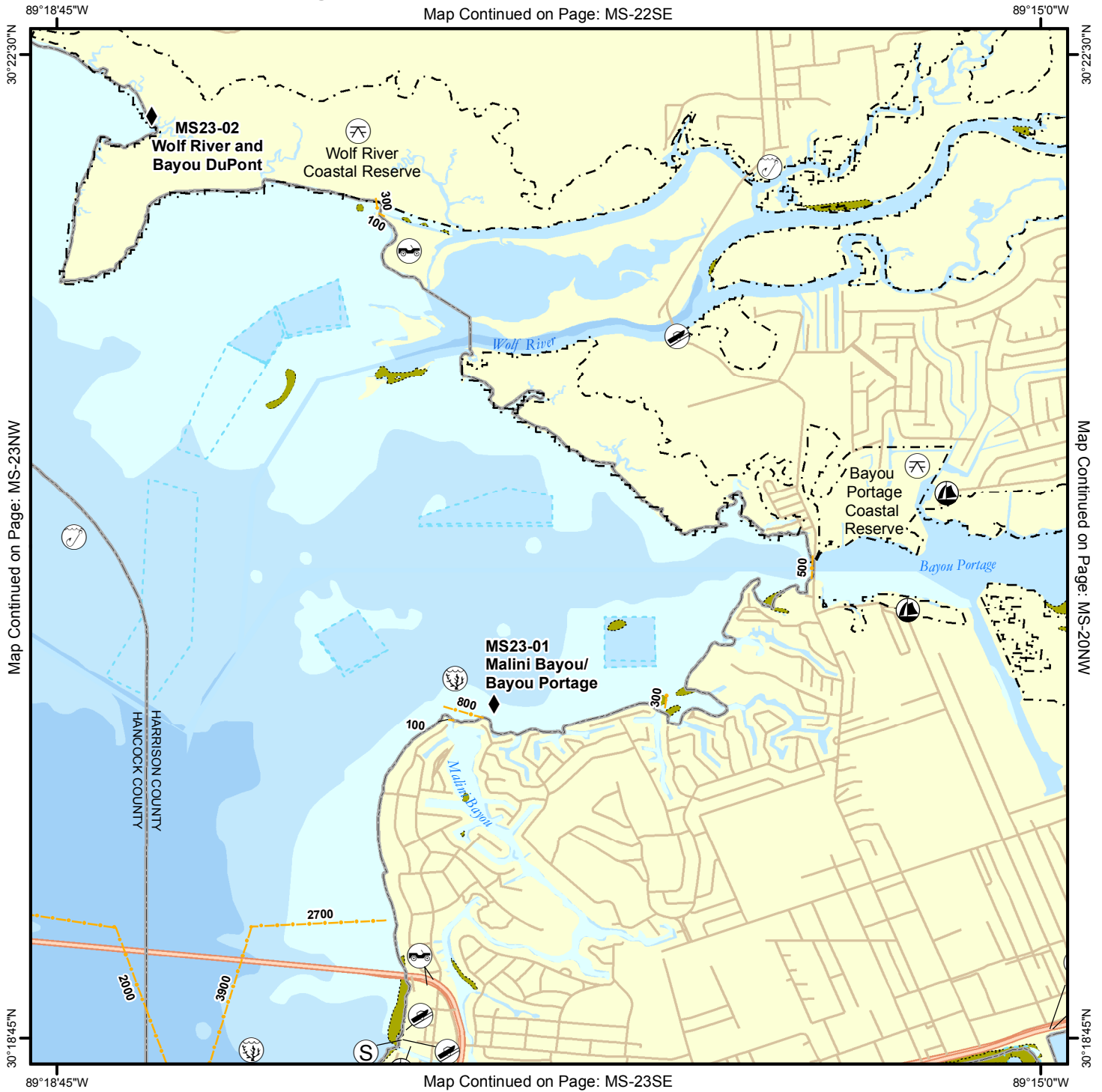
Fish and Wildlife Research Institute

Miles

Sector Mobile

Geographic Response Plan Map: MS-23NE

Map Continued on Page: MS-22SE

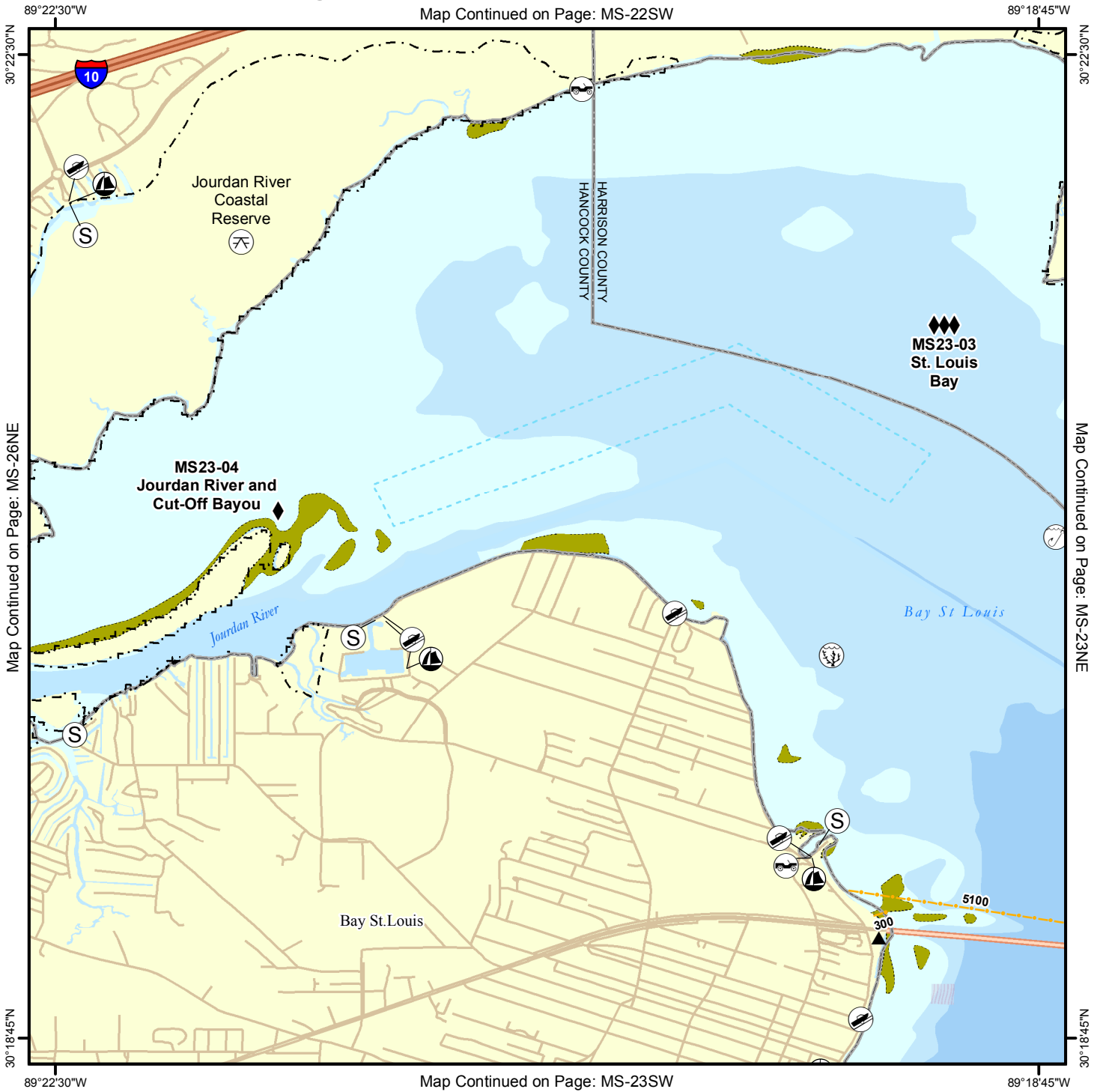


<p>Environmentally Sensitive Areas</p> <p>Summer Protection Priority</p> <ul style="list-style-type: none"> ◆◆ A - Protect First ◆◆ B - Protect after A Areas ◆ C - Protect after B Areas <p>Response Methods</p> <ul style="list-style-type: none"> Y Skimmer Shallow Water Skimmer ▲ Collection Point ▲ Natural Collection Points General Booming Strategy (Length in Feet) Incident Command Posts Ⓢ Staging Areas Ⓡ Oil Spill Risk Sites ⓔ Equipment Storage Locations Beach or Water Access Locations 	<p>Bio-Socioeconomic</p> <ul style="list-style-type: none"> Airport Aquaculture Aquatic Preserve/State Park Artificial Reef/Hardbottom Beach Mouse Habitat Black Bear Habitat Boat Ramp Coast Guard Diving Flatwoods Salamander Heliport High Recreational Beach Manatee 	<ul style="list-style-type: none"> Marina NERR National Park Naval Base Panama City Crayfish Power Plant Reptile Habitat of Concern Sea Turtle Nesting Shore Bird Habitat Spring Sturgeon Water Intake Wildlife Refuge 	<ul style="list-style-type: none"> Sea Turtle Nesting Beach Federal Managed Areas State Managed Areas Aquaculture/Oyster State Waters/County Line USCG Sector Boundary 	<p>Sector Mobile Area Committee</p> <p>Fish and Wildlife Research Institute</p>
---	--	---	--	---

0 0.25 0.5 0.75 1 Miles

Geographic Response Plan Map: MS-23NW

Map Continued on Page: MS-22SW

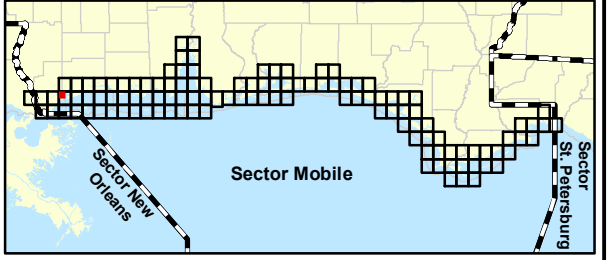


Map Continued on Page: MS-26NE

Map Continued on Page: MS-23NE

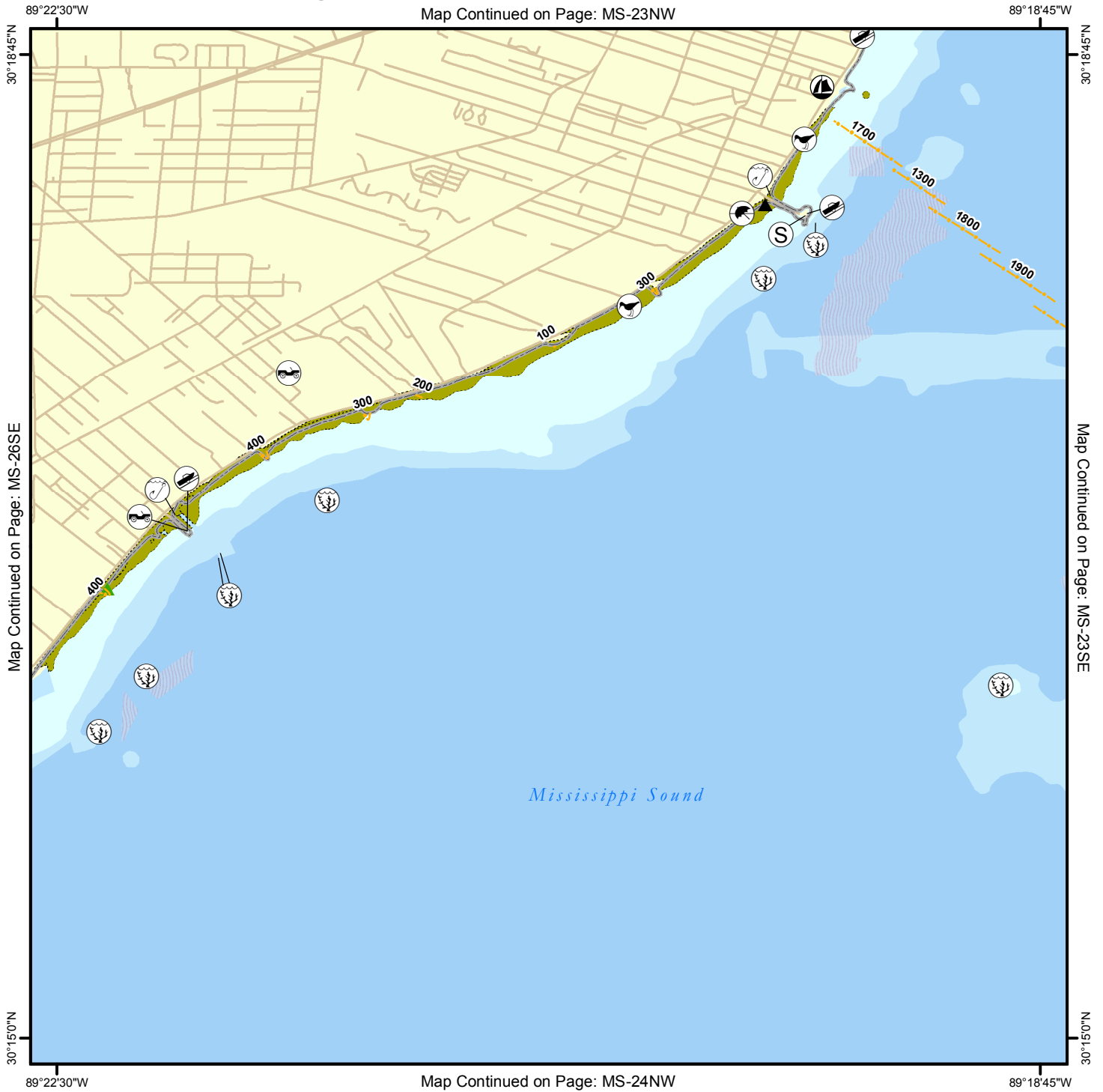
Map Continued on Page: MS-23SW

<p>Environmentally Sensitive Areas</p> <p>Summer Protection Priority</p> <ul style="list-style-type: none"> ◆◆ A - Protect First ◆◆ B - Protect after A Areas ◆ C - Protect after B Areas <p>Response Methods</p> <ul style="list-style-type: none"> Y Skimmer Shallow Water Skimmer ▲ Collection Point ▲ Natural Collection Points General Booming Strategy (Length in Feet) Incident Command Posts (S) Staging Areas (R) Oil Spill Risk Sites (E) Equipment Storage Locations Beach or Water Access Locations 	<p>Bio-Socioeconomic</p> <ul style="list-style-type: none"> Airport Aquaculture Aquatic Preserve/State Park Artificial Reef/Hardbottom Beach Mouse Habitat Black Bear Habitat Boat Ramp Coast Guard Diving Flatwoods Salamander Heliport High Recreational Beach Manatee 	<ul style="list-style-type: none"> Marina NERR National Park Naval Base Panama City Crayfish Power Plant Reptile Habitat of Concern Sea Turtle Nesting Shore Bird Habitat Spring Sturgeon Water Intake Wildlife Refuge 	<ul style="list-style-type: none"> Sea Turtle Nesting Beach Federal Managed Areas State Managed Areas Aquaculture/Oyster State Waters/County Line USCG Sector Boundary 	<p>Sector Mobile Area Committee</p> <p>Fish and Wildlife Research Institute</p> <p>0 0.25 0.5 0.75 1 Miles</p>
---	--	---	--	--



Geographic Response Plan Map: MS-23SW

Map Continued on Page: MS-23NW



Map Continued on Page: MS-26SE

Map Continued on Page: MS-23SE

30°15'0\"/>

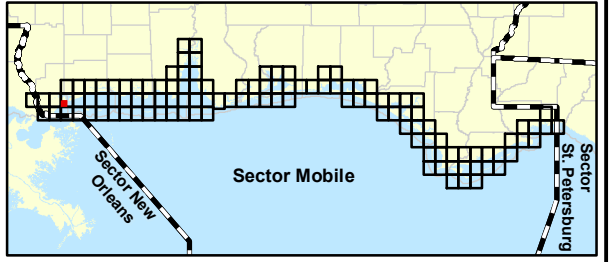
30°15'0\"/>

89°22'30\"/>

Map Continued on Page: MS-24NW

89°18'45\"/>

<p>Environmentally Sensitive Areas</p> <p>Summer Protection Priority</p> <ul style="list-style-type: none"> ◆◆ A - Protect First ◆◆ B - Protect after A Areas ◆ C - Protect after B Areas <p>Response Methods</p> <ul style="list-style-type: none"> Y Skimmer Shallow Water Skimmer ▲ Collection Point ▲ Natural Collection Points General Booming Strategy (Length in Feet) Incident Command Posts S Staging Areas R Oil Spill Risk Sites E Equipment Storage Locations Beach or Water Access Locations 	<p>Bio-Socioeconomic</p> <ul style="list-style-type: none"> Airport Aquaculture Aquatic Preserve/State Park Artificial Reef/Hardbottom Beach Mouse Habitat Black Bear Habitat Boat Ramp Coast Guard Diving Flatwoods Salamander Heliport High Recreational Beach Manatee 	<ul style="list-style-type: none"> Marina NERR National Park Naval Base Panama City Crayfish Power Plant Reptile Habitat of Concern Sea Turtle Nesting Shore Bird Habitat Spring Sturgeon Water Intake Wildlife Refuge 	<ul style="list-style-type: none"> Sea Turtle Nesting Beach Federal Managed Areas State Managed Areas Aquaculture/Oyster State Waters/County Line USCG Sector Boundary 	<p>Sector Mobile Area Committee</p> <p>Fish and Wildlife Research Institute</p> <p>0 0.25 0.5 0.75 1 Miles</p>
---	--	---	--	--



Name: Malini Bayou/Bayou Portage

Site ID:

MS23-01

Protection Priority (Season): Spring: Summer: Fall: Winter:

Site Description: Tidally influenced brackish marsh and bayou tidal creeks

GEOSPATIAL INFORMATION

Latitude (DMS): 30° 19' 59.268"

Longitude (DMS): 89° 17' 11.796"

County: Harrison

Latitude (DD): 30.333130

Longitude (DD): -89.286610

SCAT Division: Harrison County Division 2

ESI Map: MS-23

ESI Name: Bay Saint Louis, MS

NOAA Chart: 11371_1

CHART Name: LAKE BORGNE & APPROACHES CAT ISL TO POINT AUX HERBES

USGS Quad: 30089-C3

QUAD Name: Bay Saint Louis

Managed Area (if applicable): Private, Natural Area

General Location: Pass Christian, Bay St. Louis

CONTACT INFORMATION

Contacts: City of Pass Christian (Harbor Master) 228-452-5128 or (Fire Chief) 228-452-3325; MS DEQ (Emer Responder) 228-326-6401; Harrison County EOC 228-865-4002 or 228-323-6420 (Dir); MS SHPO 601-576-6940; MS State EOC 601-933-6875; MS DMR (24hr) 228-374-5000; NRC 800-424-8802; D-8 Duty NOAA SSC (24hr) 206-375-5697; DOI - Regional Environmental Officer 404-331-4524 or 404-852-5414

RESOURCES AT RISK INFORMATION

Shoreline Type: Salt/brackish marsh, solid man-made structures, sand beach, exposed flats**Habitat:** Nursery and recruitment area, salt/brackish marsh, oyster beds**Wildlife:** Waterfowl, turtles, raptors, alligator, shorebirds, mammals, fish, snakes, crabs,**Threaten/Endangered Species:** Sturgeon, MS Diamondback Terrapin, Kemp's Ridley Sea Turtle, Gulf Salt Marsh Snake**Socio-Economic Resources:** Residential, crabbing, recreational fishing, boating

RESPONSE CONSIDERATIONS

Staging Area: Henderson Pt. Boat Ramp (shallow), American Legion Pier**Collection Points:** Outside of Bay near US90 Bridge**Area Access:** Shallow draft boat or vehicle**Spill Risk:** Rail traffic, recreational boats**Response Resources:** USCG Gulfport

PROTECTION STRATEGY INFORMATION

Tidal Range (FT): 2**Average Current (KTS):** <1**Ease of Protection:****Min. Boom Length (FT):****Boom Type:** Hard**Booming Method:** Protection/Exclusion**Protection Strategy:** Boom multiple inlets for these bayous.

Name: Wolf River and Bayou DuPont

Site ID:

MS23-02

Protection Priority (Season): Spring: Summer: Fall: Winter:

Site Description: Salt/brackish marsh along river end in bayou

GEOSPATIAL INFORMATION

Latitude (DMS): 30° 22' 15.996"

Longitude (DMS): 89° 18' 23.328"

County: Harrison

Latitude (DD): 30.371110

Longitude (DD): -89.306480

SCAT Division: Harrison County Division 2

ESI Map: MS-23

ESI Name: Bay Saint Louis, MS

NOAA Chart: 11371_1

CHART Name: LAKE BORGNE & APPROACHES CAT ISL TO POINT AUX HERBES

USGS Quad: 30089-C3

QUAD Name: Bay Saint Louis

Managed Area (if applicable):

General Location: Wolf River, Bay St. Louis

CONTACT INFORMATION

Contacts: Harrison County EOC 228-865-4002 or 228-323-6420 (Director); MS DEQ (State Emergency Responder) 228-326-6401; MS DMR (24hr) 228-374-5000; Mississippi State EOC 601-933-6875; NRC 800-424-8802; D-8 Duty NOAA SSC (24hr) 206-375-5697; DOI - Regional Environmental Officer 404-331-4524 or 404-852-5414

RESOURCES AT RISK INFORMATION

Shoreline Type: Salt/brackish marsh, sheltered man-made structures

Habitat: Nursery and recruitment area, salt/brackish marsh

Wildlife: Waterfowl, turtles, raptors, alligator, shorebirds, mammals, fish, snakes, crabs,

Threaten/Endangered Species: Sturgeon, MS Diamondback Terrapin, Kemp's Ridley Sea Turtle, Gulf Salt Marsh Snake

Socio-Economic Resources: Residential, crabbing, recreational fishing, boating

RESPONSE CONSIDERATIONS

Staging Area: Henderson Pt. Boat Ramp (shallow), American Legion Pier

Collection Points: Outside of Bay near US90 Bridge

Area Access: Shallow draft boat or vehicle

Spill Risk: Rail traffic, recreational boats

Response Resources: USCG Gulfport

PROTECTION STRATEGY INFORMATION

Tidal Range (FT): Medium

Average Current (KTS): 1-2

Ease of Protection:

Min. Boom Length (FT):

Boom Type: Hard

Booming Method: Protection/Exclusion

Protection Strategy: Boom off mouth of Wolf River (non-tidal) and protect marsh shoreline if threatened. Boom may damage sensitive shoreline.



Name: St. Louis Bay

Site ID:

MS23-03

Protection Priority (Season): Spring: Summer: Fall: Winter:

Site Description: Tidally influenced shallow bay/estuary with exposed salt marsh

GEOSPATIAL INFORMATION

Latitude (DMS): 30° 21' 7.164" N

Longitude (DMS): 89° 18' 54.557"

County: Harrison

Latitude (DD): 30.351990

Longitude (DD): -89.315155

SCAT Division: Harrison County Division 2

ESI Map: MS-23

ESI Name: Bay Saint Louis, MS

NOAA Chart: 11371_1

CHART Name: LAKE BORGNE & APPROACHES CAT ISL TO POINT AUX HERBES

USGS Quad: 30089-C3

QUAD Name: Bay Saint Louis

Managed Area (if applicable): Private residential, natural area

General Location: Bay St. Louis

CONTACT INFORMATION

Contacts: Hancock EMA (Director) 228-216-0738; Harrison County EOC 228-865-4002 or 228-323-6420 (Director); Mississippi State EOC 601-933-6875; MS DMR (24hr) 228-374-5000; MS DMR (Marine Patrol) 228-523-4134; MS DEQ (State Emergency Responder) 228-326-6401; NRC 800-424-8802; D-8 Duty NOAA SSC (24hr) 206-375-5697; DOI - Regional Environmental Officer 404-331-4524 or 404-852-5414

RESOURCES AT RISK INFORMATION

Shoreline Type: Solid man-made structures, Salt/brackish marsh, rip-rap, sand beach

Habitat: Nursery and recruitment area, salt/brackish marsh, oyster beds, artificial reefs

Wildlife: Alligators, wading birds, waterfowl, raptors, shorebirds, turtles

Threaten/Endangered Species: American Alligators, MS Diamonback Terrapins, Gulf Salt Marsh Snake

Socio-Economic Resources: Boating, fishing, archaeology/historical sites throughout

RESPONSE CONSIDERATIONS

Staging Area: Henderson Boat Ramp, Cedar Point Boat Launch, American Legion Launch, Bay Waveland Yacht Club

Collection Points: American Legion, Ferry Dock (temp), along seawalls, W US-90 Bridge

Area Access: Boat, vehicle

Spill Risk: Vessel traffic (barge/recreational), railroad and road traffic

Response Resources: CG Gulfport

PROTECTION STRATEGY INFORMATION

Tidal Range (FT): 2

Average Current (KTS): 2

Ease of Protection:

Min. Boom Length (FT): 32,300

Boom Type: Hard

Booming Method: Deflection, Protection/Exclusion

Protection Strategy: Cascading deflection boom at mouth of bay to divert oil to collection points on E + W side of bay. Secondary deflection boom behind railroad bridge with gate for vessel traffic. Deflection boom on west side of bay will need to be deployed north and south of harbor construction project.



Name: Jourdan River and Cut-Off Bayou

Site ID:

MS23-04

Protection Priority (Season): Spring: Summer: Fall: Winter:

Site Description: Tidally influenced salt/brackish marsh and residential canals

GEOSPATIAL INFORMATION

Latitude (DMS): 30° 20' 45.572"

Longitude (DMS): 89° 21' 39.092"

County: Hancock

Latitude (DD): 30.345992

Longitude (DD): -89.360859

SCAT Division: Harrison County Division 2

ESI Map: MS-23

ESI Name: Bay Saint Louis, MS

NOAA Chart: 11371_1

CHART Name: LAKE BORGNE & APPROACHES CAT ISL TO POINT AUX HERBES

USGS Quad: 30089-C3

QUAD Name: Bay Saint Louis

Managed Area (if applicable): Private, Natural Area

General Location: Jourdan River Residential Area

CONTACT INFORMATION

Contacts: Hancock EMA (Director) 228-216-0738; Mississippi State EOC 601-933-6875; MS DMR (24hr) 228-374-5000 or (Marine Patrol) 228-523-4134; MS DEQ (State Emergency Responder) 228-326-6401; NRC 800-424-8802; D-8 Duty NOAA SSC (24hr) 206-375-5697; DOI - Regional Environmental Officer 404-331-4524 or 404-852-5414

RESOURCES AT RISK INFORMATION

Shoreline Type: Solid man-made structures, Salt/brackish marsh

Habitat: Nursery and recruitment area, salt/brackish marsh, oyster beds

Wildlife: Alligators, wading birds, waterfowl, raptors, shorebirds, turtles

Threaten/Endangered Species: American Alligators, MS Diamonback Terrapins, Gulf Salt Marsh Snake

Socio-Economic Resources: Boating, fishing, archaeology/historical sites throughout

RESPONSE CONSIDERATIONS

Staging Area: Cedar Point Boat Launch, Watts Bayou Boat Ramp

Collection Points: Along seawall

Area Access: Boat, vehicle

Spill Risk: Vessel traffic, fishing vessels

Response Resources: CG Gulfport

PROTECTION STRATEGY INFORMATION

Tidal Range (FT): 2

Average Current (KTS): 3-4

Ease of Protection: Medium

Min. Boom Length (FT):

Boom Type: Sorbent

Booming Method: NA

Protection Strategy: River flow into the should keep oil out of river. Main strategy is to keep oil from entering bay.



Name: Pass Christian Complex

Site ID:

MS23-05

Protection Priority (Season): Spring: Summer: Fall: Winter:

Site Description: Oyster reef

GEOSPATIAL INFORMATION

Latitude (DMS): 30° 16' 5.562" N

Longitude (DMS): 89° 17' 30.200"

County: Harrison

Latitude (DD): 30.268212

Longitude (DD): -89.291722

SCAT Division: Harrison County Division 2

ESI Map: MS-23

ESI Name: Bay Saint Louis, MS

NOAA Chart: 11371_1

CHART Name: LAKE BORGNE & APPROACHES CAT ISL TO POINT AUX HERBES

USGS Quad: 30089-C3

QUAD Name: Bay Saint Louis

Managed Area (if applicable): None

General Location: Gulf side out of St Louis Bay

CONTACT INFORMATION

Contacts: MS DMR (24hr/Shellfish Bureau Director) 228-374-5000; Hancock EMA (Director) 228-216-0738; MS DEQ (State Emergency Responder) 228-326-6401; Mississippi State EOC 601-933-6875; NRC 800-424-8802; D-8 Duty NOAA SSC (24hr) 206-375-5697; DOI - Regional Environmental Officer 404-331-4524 or 404-852-5414

RESOURCES AT RISK INFORMATION

Shoreline Type:

Habitat: Oyster reef - subtidal

Wildlife: Species associated with estuarine habitat: fish, sea turtle, eastern oyster, clams

Threaten/Endangered Species: Kemps Ridley, Loggerhead, Gulf Sturgeon

Socio-Economic Resources: Eastern oyster commercial harvest

RESPONSE CONSIDERATIONS

Staging Area: Pass Christian Harbor, Henderson Boat Ramp

Collection Points: On water recovery via skimmer, mouth of St Louis Bay

Area Access: Boat

Spill Risk: Vessel traffic

Response Resources: CG Gulfport

PROTECTION STRATEGY INFORMATION

Tidal Range (FT): 2

Average Current (KTS): 2

Ease of Protection: Hard

Min. Boom Length (FT): N/A

Boom Type: N/A

Booming Method: NA

Protection Strategy: Contain oil at source, skim oil as appropriate.



Facility Name: Henderson Point Boat Ramp

Site ID:

Data Collector (Agency): State of Mississippi

Survey Type: Response

Survey Date: 2008-01-30 00:00

Managing Agency: City of Pass Christian

General Manager/Contact Person:

Contact Phone #:

SCAT Description: Harrison County Division 2

Physical Address: Bayview Street

City: Pass Christian

State: Mississippi

Zip Code 39571

County: Harrison

GEOSPATIAL INFORMATION

Latitude (DMS): 30° 18' 44.910" N

Longitude (DMS): 89° 17' 26.220" W

Latitude (DD): 30.31247499

Longitude (DD): -89.29061666

SITE DESCRIPTION

Site Type: Staging Area; Boat Ramp

Access: Public

Operational Status:

Scale of Staging Area:

Hours of Operation: 24 hours

Days of Operation: 7 days a week

Water Type: Salt

Water Body Name: St Louis Bay

Boat Launch Capability: Boats Under 25 ft

Number of Boat Ramps: 1

Number of Boat Ramp Lanes: 1

Number of Boat Slips: 0

Number of Moorings: 0

Boat Ramp Surface Composition: Cement or Asphalt

Water Depth at End of Boat Ramp: 4 - 6 feet

Wave Energy at Site: Low

Shoreline Type in Viewable Viscinity: Rip-Rap

Access Constraints: No Access Constraints

Crane Capabilities: Suitable for small crane

Collection Point Capabilities:

Parking Capacity for Trailers: 15

Parking Capacity for Cars: 30

Parking Lot Dimensions:

Parking Surface: Paved - Concrete or Asphalt

Capable for Light or Heavy Equipment and Type:

Boom Available On-Site and Length:

ADDITIONAL AMMENITIES

Fuels Available: No Fuel

Propane or Natural Gas Available

Water Available: No Water

Fire Hydrant:

Pumpout Available: No Pumpout

Bathrooms Available: No Restrooms

Electricity Amperage Available: No Electricity Available

Camping Facilities:

Food Available: Food Available (1-5 mi.)

Security Available and Hours On Duty:

GENERAL INFORMATION AND COMMENTS

Special/Pre-Planned Events and Dates:

Comments:

Photo URL:



Facility Name: Pass Christian Harbor

Site ID:

Data Collector (Agency): State of Mississippi

Survey Type: Response

Survey Date: 2008-01-30 00:00

Managing Agency: City of Pass Christian

General Manager/Contact Person:

Contact Phone #: 228-452-5128

SCAT Description: Harrison County Division 2

Physical Address: 1 Hiern Ave

City: Pass Christian

State: Mississippi

Zip Code 39571

County: Harrison

GEOSPATIAL INFORMATION

Latitude (DMS): 30° 18' 46.662" N

Longitude (DMS): 89° 14' 58.098" W

Latitude (DD): 30.31296166

Longitude (DD): -89.24947166

SITE DESCRIPTION

Site Type: Staging Area; Boat Ramp; Marina

Access: Public

Operational Status:

Scale of Staging Area:

Hours of Operation: 24 hours

Days of Operation: 7 days a week

Water Type: Salt

Water Body Name: Mississippi Sound

Boat Launch Capability: RAMP - Boats UNDER 25 FT; RAMP - Boats OVER 25 FT

Number of Boat Ramps: 2

Number of Boat Ramp Lanes: 2

Number of Boat Slips: 110

Number of Moorings: 120

Boat Ramp Surface Composition: Cement or Asphalt

Water Depth at End of Boat Ramp: 4 - 6 feet

Wave Energy at Site: Low

Shoreline Type in Viewable Vicinity: Seawall; Rip-Rap; Soft Stem Veg.

Access Constraints: No Access Constraints

Crane Capabilities: Not suitable for crane

Collection Point Capabilities:

Parking Capacity for Trailers: 35

Parking Capacity for Cars: 30

Parking Lot Dimensions:

Parking Surface: Paved - Concrete or Asphalt

Capable for Light or Heavy Equipment and Type:

Boom Available On-Site and Length:

ADDITIONAL AMMENITIES

Fuels Available: Gasoline; Diesel

Propane or Natural Gas Available

Water Available: Yes

Fire Hydrant:

Pumpout Available: Pumpout Available

Bathrooms Available: Restroom Facilities

Electricity Amperage Available: 30 Amp Hookup

Camping Facilities:

Food Available: On-Site Restaurant; Food Available (1-5 mi.)

Security Available and Hours On Duty:

GENERAL INFORMATION AND COMMENTS

Special/Pre-Planned Events and Dates:

Comments:

Photo URL:



Facility Name: Diamondhead

Site ID:

Data Collector (Agency): State of Mississippi

Survey Type: Response

Survey Date: 2008-01-29 00:00

Managing Agency:

General Manager/Contact Person:

Contact Phone #:

SCAT Description: Harrison County Division 2

Physical Address: Vaught Circle

City: Bay St Louis

State: Mississippi

Zip Code 39525

County: Hancock

GEOSPATIAL INFORMATION

Latitude (DMS): 30° 21' 57.048" N

Longitude (DMS): 89° 22' 27.174" W

Latitude (DD): 30.36584666

Longitude (DD): -89.37421499

SITE DESCRIPTION

Site Type: Staging Area; Boat Ramp; Marina

Access: Private

Operational Status:

Scale of Staging Area:

Hours of Operation: 24 hours

Days of Operation: 7 days a week

Water Type: Brackish

Water Body Name: St Louis Bay

Boat Launch Capability: RAMP - Boats UNDER 25 FT; RAMP - Boats OVER 25 FT

Number of Boat Ramps: 2

Number of Boat Ramp Lanes: 2

Number of Boat Slips: 15

Number of Moorings: 15

Boat Ramp Surface Composition: Cement or Asphalt

Water Depth at End of Boat Ramp: 4 - 6 feet

Wave Energy at Site: Low

Shoreline Type in Viewable Vicinity: Seawall

Access Constraints: No Access Constraints

Crane Capabilities: Suitable for small crane; Suitable for large crane

Collection Point Capabilities:

Parking Capacity for Trailers: 25

Parking Capacity for Cars: 50

Parking Lot Dimensions:

Parking Surface: Paved - Concrete or Asphalt; Grass

Capable for Light or Heavy Equipment and Type:

Boom Available On-Site and Length:

ADDITIONAL AMMENITIES

Fuels Available: No Fuel

Propane or Natural Gas Available

Water Available: No Water

Fire Hydrant:

Pumpout Available: No Pumpout

Bathrooms Available: Port-a-Pottie

Electricity Amperage Available: No Electricity Available

Camping Facilities:

Food Available: Food Available (1-5 mi.)

Security Available and Hours On Duty:

GENERAL INFORMATION AND COMMENTS

Special/Pre-Planned Events and Dates:

Comments:

Photo URL:



Facility Name: Watts Bayou Boat Ramp

Site ID:

Data Collector (Agency): State of Mississippi

Survey Type: Response

Survey Date: 2008-01-29 00:00

Managing Agency:

General Manager/Contact Person:

Contact Phone #:

SCAT Description: Harrison County Division 2

Physical Address: Blue Meadow Road

City: Bay St. Louis

State: Mississippi

Zip Code 39520

County: Hancock

GEOSPATIAL INFORMATION

Latitude (DMS): 30° 19' 54.516" N

Longitude (DMS): 89° 22' 26.070" W

Latitude (DD): 30.33181000

Longitude (DD): -89.37390833

SITE DESCRIPTION

Site Type: Boat Ramp; Marina

Access: Private

Operational Status:

Scale of Staging Area:

Hours of Operation: 24 hours

Days of Operation: 7 days a week

Water Type: Salt

Water Body Name: Watts Bayou

Boat Launch Capability: Boats Under 25 ft

Number of Boat Ramps: 1

Number of Boat Ramp Lanes: 1

Number of Boat Slips: 0

Number of Moorings: 0

Boat Ramp Surface Composition: Clay; Gravel/Dirt

Water Depth at End of Boat Ramp: 4 - 6 feet

Wave Energy at Site: Low

Shoreline Type in Viewable Viscinity: Seawall; Soft Stem Veg.

Access Constraints: No Access Constraints

Crane Capabilities: Not suitable for crane

Collection Point Capabilities:

Parking Capacity for Trailers: 0

Parking Capacity for Cars: 5

Parking Lot Dimensions:

Parking Surface: Paved - Concrete or Asphalt; Dirt/Gravel

Capable for Light or Heavy Equipment and Type:

Boom Available On-Site and Length:

ADDITIONAL AMMENITIES

Fuels Available: No Fuel

Propane or Natural Gas Available

Water Available: No Water

Fire Hydrant:

Pumpout Available: No Pumpout

Bathrooms Available: No Restrooms

Electricity Amperage Available: No Electricity Available

Camping Facilities:

Food Available: Food Available (1-5 mi.)

Security Available and Hours On Duty:

GENERAL INFORMATION AND COMMENTS

Special/Pre-Planned Events and Dates:

Comments:

Photo URL:



Facility Name: Cedar Point Boat Launch

Site ID:

Data Collector (Agency): State of Mississippi

Survey Type: Response

Survey Date: 2008-01-29 00:00

Managing Agency: State of Mississippi

General Manager/Contact Person:

Contact Phone #:

SCAT Description: Harrison County Division 2

Physical Address: North Beach Blvd

City: Bay St. Louis

State: Mississippi

Zip Code 39520

County: Hancock

GEOSPATIAL INFORMATION

Latitude (DMS): 30° 20' 20.634" N

Longitude (DMS): 89° 21' 16.860" W

Latitude (DD): 30.33906500

Longitude (DD): -89.35468333

SITE DESCRIPTION

Site Type: Boat Ramp

Access: Public

Operational Status:

Scale of Staging Area:

Hours of Operation: 24 hours

Days of Operation: 7 days a week

Water Type: Salt

Water Body Name: St Louis Bay

Boat Launch Capability:

Number of Boat Ramps: 2

Number of Boat Ramp Lanes: 2

Number of Boat Slips: 0

Number of Moorings: 0

Boat Ramp Surface Composition: Cement or Asphalt

Wave Energy at Site: Low

Water Depth at End of Boat Ramp: 4 - 6 feet

Shoreline Type in Viewable Vicinity: Seawall

Access Constraints: No Access Constraints

Crane Capabilities: Not suitable for crane

Collection Point Capabilities:

Parking Capacity for Trailers: 10

Parking Capacity for Cars: 20

Parking Lot Dimensions:

Parking Surface: Paved - Concrete or Asphalt; Dirt/Gravel

Capable for Light or Heavy Equipment and Type:

Boom Available On-Site and Length:

ADDITIONAL AMMENITIES

Fuels Available: No Fuel

Propane or Natural Gas Available

Water Available: No Water

Fire Hydrant:

Pumpout Available: No Pumpout

Bathrooms Available: No Restrooms

Electricity Amperage Available: No Electricity Available

Camping Facilities:

Food Available: Food Available (1-5 mi.)

Security Available and Hours On Duty:

GENERAL INFORMATION AND COMMENTS

Special/Pre-Planned Events and Dates:

Comments:

Photo URL:



Facility Name: Bay Waveland Yacht Club

Site ID:

Data Collector (Agency): State of Mississippi

Survey Type: Response

Survey Date: 2008-01-29 00:00

Managing Agency:

General Manager/Contact Person:

Contact Phone #: 228-467-4592

SCAT Description: Harrison County Division 2

Physical Address: Yacht Club Dr

City: Bay St. Louis

State: Mississippi

Zip Code 39520

County: Hancock

GEOSPATIAL INFORMATION

Latitude (DMS): 30° 19' 28.962" N

Longitude (DMS): 89° 19' 35.106" W

Latitude (DD): 30.32471166

Longitude (DD): -89.32641833

SITE DESCRIPTION

Site Type: Staging Area; Boat Ramp; Marina

Access: Private

Operational Status:

Scale of Staging Area:

Hours of Operation: 24 hours

Days of Operation: 7 days a week

Water Type: Salt

Water Body Name: St. Louis Bay

Boat Launch Capability: Boats Under 25 ft

Number of Boat Ramps: 1

Number of Boat Ramp Lanes: 1

Number of Boat Slips: 40

Number of Moorings: 40

Boat Ramp Surface Composition: Cement or Asphalt

Water Depth at End of Boat Ramp: 4 - 6 feet

Wave Energy at Site: Low

Shoreline Type in Viewable Vicinity: Seawall

Access Constraints: No Access Constraints

Crane Capabilities: Not suitable for crane

Collection Point Capabilities:

Parking Capacity for Trailers: 5

Parking Capacity for Cars: 10

Parking Lot Dimensions:

Parking Surface: Paved - Concrete or Asphalt

Capable for Light or Heavy Equipment and Type:

Boom Available On-Site and Length:

ADDITIONAL AMMENITIES

Fuels Available: No Fuel

Propane or Natural Gas Available

Water Available: No Water

Fire Hydrant:

Pumpout Available: No Pumpout

Bathrooms Available: Port-a-Pottie

Electricity Amperage Available: No Electricity Available

Camping Facilities:

Food Available: None

Security Available and Hours On Duty:

GENERAL INFORMATION AND COMMENTS

Special/Pre-Planned Events and Dates:

Comments:

Photo URL:



Facility Name: American Legion Pier and Launch

Site ID:

Data Collector (Agency): State of Mississippi

Survey Type: Response

Survey Date: 2008-01-29 00:00

Managing Agency: State of Mississippi

General Manager/Contact Person:

Contact Phone #:

SCAT Description: Harrison County Division 2

Physical Address: Washington Street

City: Bay St. Louis

State: Mississippi

Zip Code 39525

County: Hancock

GEOSPATIAL INFORMATION

Latitude (DMS): 30° 18' 7.818" N

Longitude (DMS): 89° 19' 39.264" W

Latitude (DD): 30.30217166

Longitude (DD): -89.32757333

SITE DESCRIPTION

Site Type: Staging Area; Boat Ramp

Access: Public

Operational Status:

Scale of Staging Area:

Hours of Operation: 24 hours

Days of Operation: 7 days a week

Water Type: Salt

Water Body Name: Mississippi Sound

Boat Launch Capability: Boats Under 25 ft

Number of Boat Ramps: 2

Number of Boat Ramp Lanes: 2

Number of Boat Slips: 0

Number of Moorings: 0

Boat Ramp Surface Composition: Cement or Asphalt

Water Depth at End of Boat Ramp: 4 - 6 feet

Wave Energy at Site: Low

Shoreline Type in Viewable Viscinity: Rip-Rap

Access Constraints: No Access Constraints

Crane Capabilities: Not suitable for crane

Collection Point Capabilities:

Parking Capacity for Trailers: 10

Parking Capacity for Cars: 20

Parking Lot Dimensions:

Parking Surface: Dirt/Gravel

Capable for Light or Heavy Equipment and Type:

Boom Available On-Site and Length:

ADDITIONAL AMMENITIES

Fuels Available: No Fuel

Propane or Natural Gas Available

Water Available: No Water

Fire Hydrant:

Pumpout Available: No Pumpout

Bathrooms Available: No Restrooms

Electricity Amperage Available: No Electricity Available

Camping Facilities:

Food Available: Food Available (1-5 mi.)

Security Available and Hours On Duty:

GENERAL INFORMATION AND COMMENTS

Special/Pre-Planned Events and Dates:

Comments:

Photo URL:

