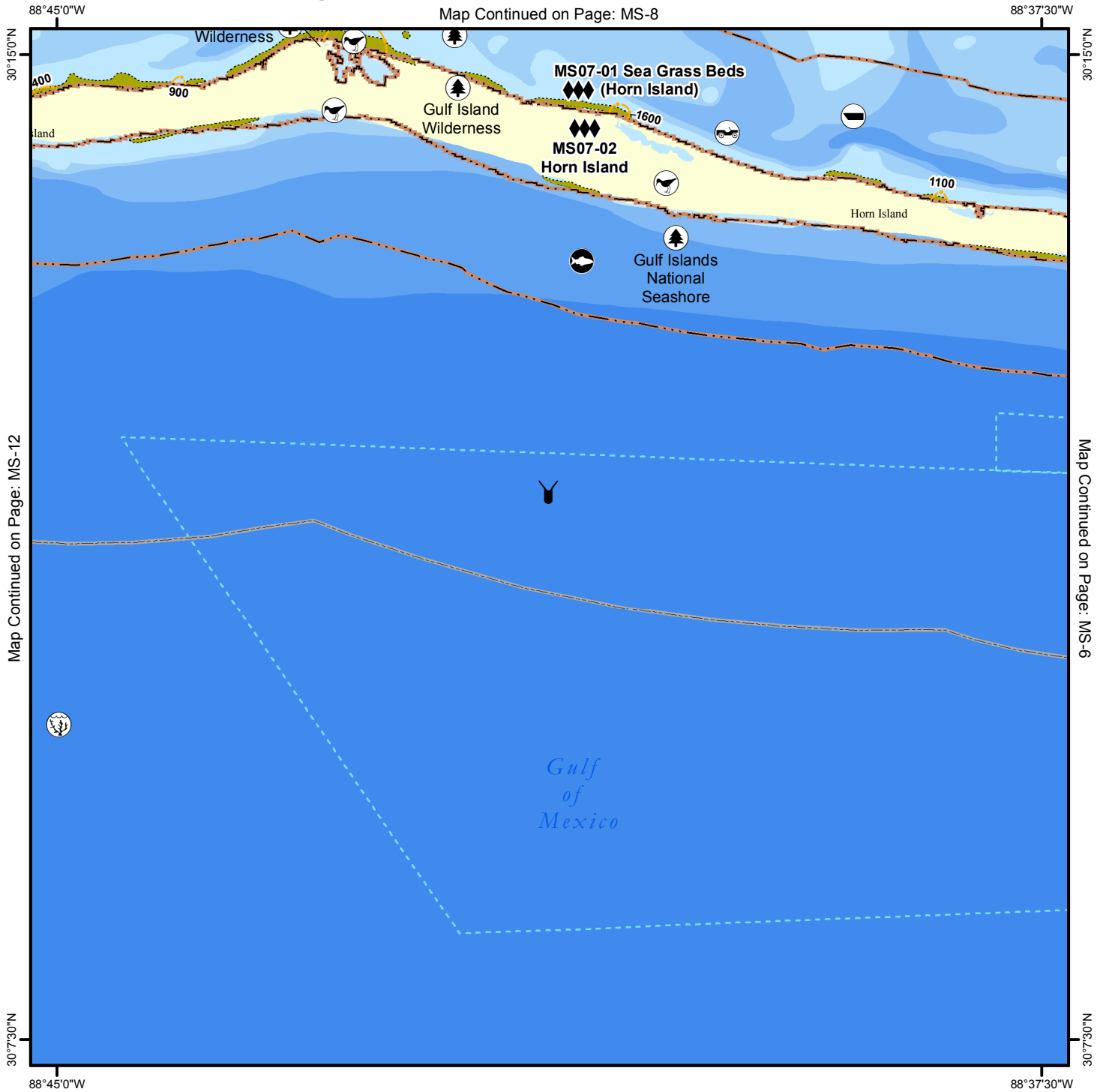


Geographic Response Plan Map: MS-7

Map Continued on Page: MS-8



Map Continued on Page: MS-12

Map Continued on Page: MS-6

<p>Environmentally Sensitive Areas</p> <p>Summer Protection Priority</p> <ul style="list-style-type: none"> ◆◆◆ A - Protect First ◆◆ B - Protect after A Areas ◆ C - Protect after B Areas <p>Response Methods</p> <ul style="list-style-type: none"> Y Skimmer ☉ Shallow Water Skimmer ▲ Collection Point ▲ Natural Collection Points ~ General Booming Strategy (Length in Feet) ▣ Incident Command Posts ⊙ Staging Areas ⊙ Oil Spill Risk Sites ⊙ Equipment Storage Locations ⊙ Beach or Water Access 	<p>Bio-Socioeconomic</p> <ul style="list-style-type: none"> ✈ Airport ⊙ Aquaculture ⊙ Aquatic Preserve/State Park ⊙ Artificial Reef/Hardbottom ⊙ Beach Mouse Habitat ⊙ Black Bear Habitat ⊙ Boat Ramp ⊙ Coast Guard ⊙ Diving ⊙ Flatwoods Salamander ⊙ Heliport ⊙ High Recreational Beach ⊙ Manatee 	<ul style="list-style-type: none"> ⊙ Marina ⊙ NERR ⊙ National Park ⊙ Naval Base ⊙ Panama City Crayfish ⚡ Power Plant ⊙ Reptile Habitat of Concern ⊙ Sea Turtle Nesting ⊙ Shore Bird Habitat ⊙ Spring ⊙ Sturgeon ⊙ Water Intake ⊙ Wildlife Refuge 	<ul style="list-style-type: none"> 🌿 Sea Turtle Nesting Beach 📏 Federal Managed Areas 📏 State Managed Areas 📏 Aquaculture/Oysters 📏 State Waters/County Line 📏 USCG Sector Boundary
--	--	---	---

Sector Mobile
Area Committee

Fish and Wildlife
Research Institute

0 0.5 1 1.5 2 Miles

Name: Sea Grass Beds (Horn Island)

Site ID:

MS07-01

Protection Priority (Season): Spring: Summer: Fall: Winter:

Site Description: Within 10 ft contour on north side of Horn Island.

GEOSPATIAL INFORMATION

Latitude (DMS): 30° 14' 43.845"

Longitude (DMS): 88° 41' 1.819" W

County: Jackson

Latitude (DD): 30.245512

Longitude (DD): -88.683839

SCAT Division: Jackson County Division 1

ESI Map: MS-7

ESI Name: Horn Island West, MS

NOAA Chart: 11373_1

CHART Name: MISSISSIPPI SND & APPROACHES DAUPHIN ISL TO CAT ISL

USGS Quad: 30088-B6

QUAD Name: Horn Island West

Managed Area (if applicable): National Park Service

General Location:

CONTACT INFORMATION

Contacts: NPS-Gulf Islands National Seashore (Mississippi Main Office) 228-875-9057 or (Chief Ranger) 850-934-2615 or (24hr) 850-916-3010; Harrison County EOC 228-865-4002 or 228-323-6420 (Director); Mississippi State EOC 601-933-6875; MS SHPO 601-576-6940; NRC 800-424-8802; D-8 Duty NOAA SSC (24hr) 206-375-5697; DOI - Regional Environmental Officer 404-331-4524 or 404-852-5414

RESOURCES AT RISK INFORMATION

Shoreline Type: Seagrass beds, Submerged Aquatic Vegetation

Habitat: Seagrass

Wildlife: Blue crab, Shrimp, Shorebirds, Wading birds, Gulls Terns, marine mammals, sea turtles, possible Gulf Sturgeon (T)

Threaten/Endangered Species: Sea Turtles (Kemp's Ridley, Green, Loggerhead, Leatherback), possible Gulf Sturgeon

Socio-Economic Resources: Archaeological and Recreational fishing

RESPONSE CONSIDERATIONS

Staging Area: USCG Singing River Island Ramp, Yazoo Point

Collection Points: Shallow water skimmer

Area Access: Boat, Helicopter

Spill Risk: Commercial and recreational vessels

Response Resources:

PROTECTION STRATEGY INFORMATION

Tidal Range (FT):

Average Current (KTS):

Ease of Protection:

Min. Boom Length (FT):

Boom Type:

Booming Method: Deflection, Protection/Exclusion

Protection Strategy: Contact GINS for guidance of boom and anchor deployment. See NPS Annex for vessel of operation standards.



Name: Horn Island

Site ID:

MS07-02

Protection Priority (Season): Spring: A Summer: A Fall: A Winter: A

Site Description: Some private ownership on island. salt marsh and inlets

GEOSPATIAL INFORMATION

Latitude (DMS): 30° 14' 24.723"

Longitude (DMS): 88° 41' 16.075"

County: Jackson

Latitude (DD): 30.240201

Longitude (DD): -88.687799

SCAT Division: Jackson County Division 1

ESI Map: MS-7

ESI Name: Horn Island West, MS

NOAA Chart: 11373_1

CHART Name: MISSISSIPPI SND & APPROACHES DAUPHIN ISL TO CAT ISL

USGS Quad: 30088-B6

QUAD Name: Horn Island West

Managed Area (if applicable): National Park Service

General Location: Inlets (both permanent and transient) and marshes

CONTACT INFORMATION

Contacts: NPS-Gulf Islands National Seashore (Mississippi Main Office) 228-875-9057 or (Chief Ranger) 850-934-2615 or (24hr) 850-916-3010; Harrison County EOC 228-865-4002 or 228-323-6420 (Director); Mississippi State EOC 601-933-6875; MS SHPO 601-576-6940; NRC 800-424-8802; D-8 Duty NOAA SSC (24hr) 206-375-5697; DOI - Regional Environmental Officer 404-331-4524 or 404-852-5414

RESOURCES AT RISK INFORMATION

Shoreline Type: Fine Sandy beaches, Salt Marsh

Habitat: Fine sandy beaches, Salt marsh

Wildlife: Raptors, Shorebirds, Wading birds, Waterfowl, Turtles, Snakes, Small Mammals, Bald Eagle, Peregrine Falcon, American Alligator, possible Gulf Sturgeon (T)

Threaten/Endangered Species: Peregrine Falcon, American alligator

Socio-Economic Resources:

RESPONSE CONSIDERATIONS

Staging Area: Singing River Yacht Club, USCG Singing River Island Ramp

Collection Points: Open water skimming gulf side

Area Access: Boat, Helicopter

Spill Risk: Commercial and recreational vessels

Response Resources:

PROTECTION STRATEGY INFORMATION

Tidal Range (FT):

Average Current (KTS):

Ease of Protection: Unknown

Min. Boom Length (FT):

Boom Type:

Booming Method: Protection/Exclusion

Protection Strategy: On eastern tip of Horn Island deploy sorbent boom at mouths (2) inlets on north shore and outflow (1) on south shore. Place deflection boom at eastern tip of island (if appropriate)(on map MS-6). Sorbent boom is depicted for permanent inlets. Contact GINS for guidance on transient inlets. See NPS Annex for vessel of operation standards.

