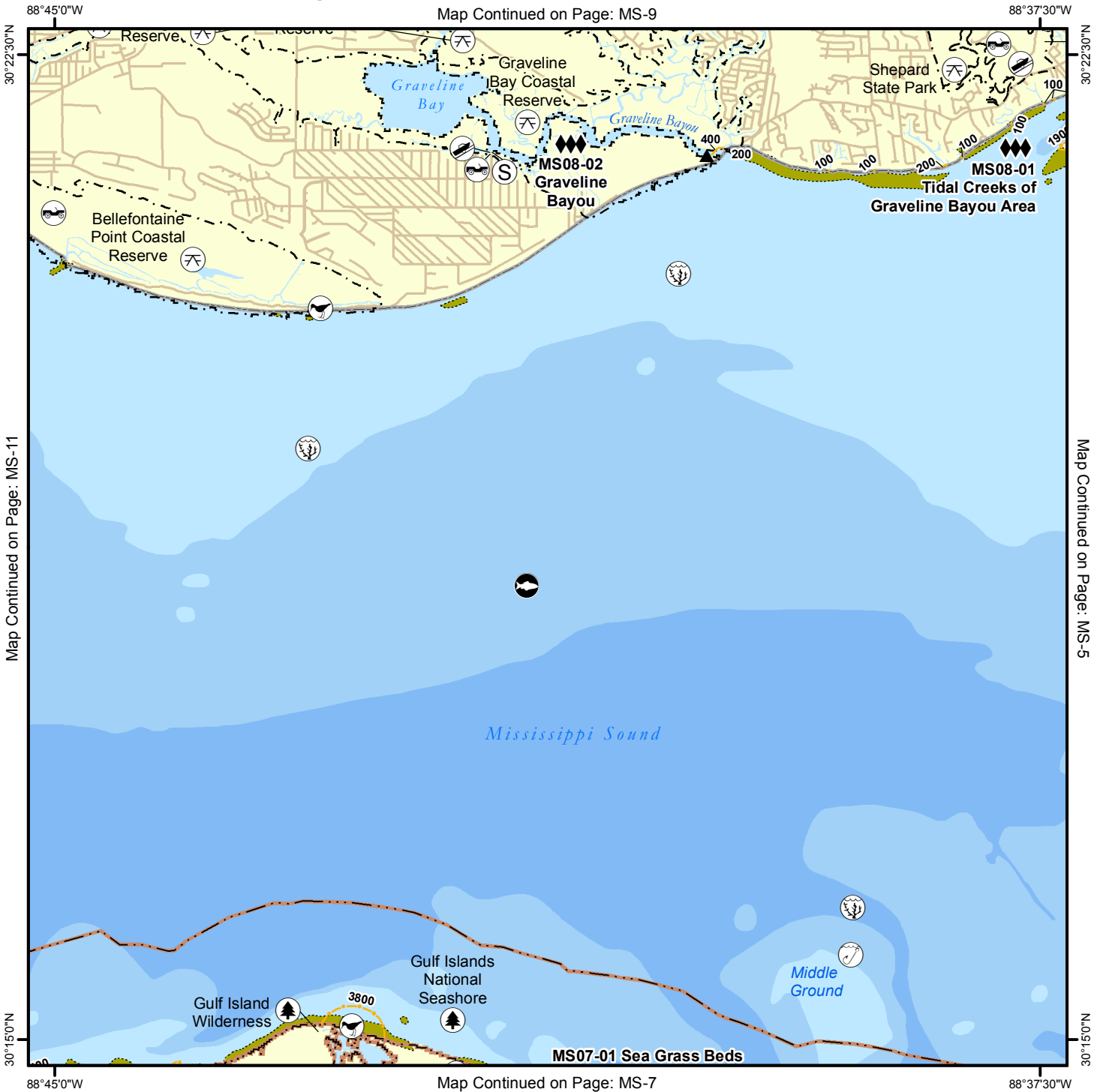


Geographic Response Plan Map: MS-8

Map Continued on Page: MS-9



Map Continued on Page: MS-11

Map Continued on Page: MS-5

Map Continued on Page: MS-7

<p>Environmentally Sensitive Areas</p> <p>Summer Protection Priority</p> <ul style="list-style-type: none"> ◆◆ A - Protect First ◆◆ B - Protect after A Areas ◆ C - Protect after B Areas <p>Response Methods</p> <ul style="list-style-type: none"> Y Skimmer Shallow Water Skimmer ▲ Collection Point ▲ Natural Collection Points General Booming Strategy (Length in Feet) Incident Command Posts (S) Staging Areas (R) Oil Spill Risk Sites (E) Equipment Storage Locations Beach or Water Access 	<p>Bio-Socioeconomic</p> <ul style="list-style-type: none"> Airport Aquaculture Aquatic Preserve/State Park Artificial Reef/Hardbottom Beach Mouse Habitat Black Bear Habitat Boat Ramp Coast Guard Diving Flatwoods Salamander Heliport High Recreational Beach Manatee 	<ul style="list-style-type: none"> Marina NERR National Park Naval Base Panama City Crayfish Power Plant Reptile Habitat of Concern Sea Turtle Nesting Shore Bird Habitat Spring Sturgeon Water Intake Wildlife Refuge 	<ul style="list-style-type: none"> Sea Turtle Nesting Beach Federal Managed Areas State Managed Areas Aquaculture/Oysters State Waters/County Line USCG Sector Boundary
---	--	---	---

Sector Mobile Area Committee

Fish and Wildlife Research Institute

0 0.5 1 1.5 2 Miles

Sector New Orleans Sector Mobile Sector St. Petersburg

Name: Tidal Creeks of Graveline Bayou Area

Site ID:

MS08-01

Protection Priority (Season): Spring: A Summer: A Fall: A Winter: A

Site Description: Very shallow

GEOSPATIAL INFORMATION

Latitude (DMS): 30° 22' 3.041" N

Longitude (DMS): 88° 37' 57.300"

County: Jackson

Latitude (DD): 30.367511

Longitude (DD): -88.632583

SCAT Division: Jackson County Division 3

ESI Map: MS-8

ESI Name: Gautier South, MS

NOAA Chart: 11375_1

CHART Name: PASCAGOULA HARBOR MISSISSIPPI

USGS Quad: 30088-C6

QUAD Name: Gautier South

Managed Area (if applicable):

General Location:

CONTACT INFORMATION

Contacts: Jackson County EMA (Director) 288-769-3111 or 228-217-0536; Mississippi State EOC 601-933-6875; NRC 800-424-8802; D-8 Duty NOAA SSC (24hr) 206-375-5697; DOI - Regional Environmental Officer 404-331-4524 or 404-852-5414

RESOURCES AT RISK INFORMATION

Shoreline Type: Salt marsh, sand beach (sporadic)

Habitat: Salt marsh

Wildlife: Wading birds, waterfowl, raptor, Gulf salt marsh snake, Diamondback Terrapin, alligators, dolphins, Junvenile nursery, Junvenile Trapon nursery

Threaten/Endangered Species:

Socio-Economic Resources: Resident

RESPONSE CONSIDERATIONS

Staging Area: USCG Singing River Island Ramp

Collection Points:

Area Access:

Spill Risk: Shipping Channels, commercial and recreational vessels

Response Resources:

PROTECTION STRATEGY INFORMATION

Tidal Range (FT):

Average Current (KTS):

Ease of Protection: Medium

Min. Boom Length (FT):

Boom Type:

Booming Method:

Protection Strategy: Boom mouths of inlets (single line boom across mouths). Some are on Map MS-5



Name: Graveline Bayou

Site ID:

MS08-02

Protection Priority (Season): Spring: Summer: Fall: Winter:

Site Description: Very shallow along shoreline

GEOSPATIAL INFORMATION

Latitude (DMS): 30° 21' 57.718"

Longitude (DMS): 88° 40' 55.078"

County: Jackson

Latitude (DD): 30.366033

Longitude (DD): -88.681966

SCAT Division: Jackson County Division 3

ESI Map: MS-8

ESI Name: Gautier South, MS

NOAA Chart: 11373_1

CHART Name: MISSISSIPPI SND & APPROACHES DAUPHIN ISL TO CAT ISL

USGS Quad: 30088-C6

QUAD Name: Gautier South

Managed Area (if applicable): Graveline Bay Coastal Preserve

General Location:

CONTACT INFORMATION

Contacts: MS DMR (24hr/Preserve Mgr) 228-374-5000; NRC 800-424-8802; D-8 Duty NOAA SSC (24hr) 206-375-5697; DOI - Regional Environmental Officer 404-331-4524 or 404-852-5414

RESOURCES AT RISK INFORMATION

Shoreline Type: Salt and Brackish Marsh

Habitat: Oyster reefs, marsh

Wildlife: Shore, Wading/ Diving birds, Raptors, Turtles, Terrapin

Threaten/Endangered Species: Gulf Sturgeon, Alligator, Gulf sm. snake

Socio-Economic Resources: Recreational fishing

RESPONSE CONSIDERATIONS

Staging Area: Webb's Landing Boat Ramp

Collection Points: Mouth of Graveline Bayou

Area Access: Boat, limited vehicles

Spill Risk: Recreational vessels

Response Resources:

PROTECTION STRATEGY INFORMATION

Tidal Range (FT):

Average Current (KTS):

Ease of Protection: Medium

Min. Boom Length (FT): 1,000

Boom Type:

Booming Method: Deflection, Protection/Exclusion

Protection Strategy: Deploy boom across mouth of Bayou Graveline and creek to east.



Facility Name: Webb's Landing Boat Ramp

Site ID:

Data Collector (Agency): FWC-FWRI

Survey Type: Planning

Survey Date: 2008-01-29 00:00

Managing Agency: Jackson County

General Manager/Contact Person:

Contact Phone #:

SCAT Description: Jackson County Division 3

Physical Address: Octavia street

City: Ocean Springs

State: Mississippi

Zip Code 39564

County: Jackson

GEOSPATIAL INFORMATION

Latitude (DMS): 30° 21' 45.672" N

Longitude (DMS): 88° 41' 40.914" W

Latitude (DD): 30.36268666

Longitude (DD): -88.69469833

SITE DESCRIPTION

Site Type: Staging Area; Boat Ramp

Access: Public

Operational Status:

Scale of Staging Area:

Hours of Operation: 24 hours

Days of Operation: 7 days a week

Water Type: Salt

Water Body Name: Graveline Bayou

Boat Launch Capability: Boats Under 25 ft

Number of Boat Ramps: 1

Number of Boat Ramp Lanes: 1

Number of Boat Slips: 0

Number of Moorings: 0

Boat Ramp Surface Composition: Cement or Asphalt

Water Depth at End of Boat Ramp: 6 - 8 feet

Wave Energy at Site: Low

Shoreline Type in Viewable Viscinity: Soft Stem Veg.

Access Constraints: No Access Constraints

Crane Capabilities: Not suitable for crane

Collection Point Capabilities:

Parking Capacity for Trailers: 20

Parking Capacity for Cars: 20

Parking Lot Dimensions:

Parking Surface: Paved - Concrete or Asphalt; Dirt/Gravel

Capable for Light or Heavy Equipment and Type:

Boom Available On-Site and Length:

ADDITIONAL AMMENITIES

Fuels Available: No Fuel

Propane or Natural Gas Available

Water Available: No Water

Fire Hydrant:

Pumpout Available: No Pumpout

Bathrooms Available: No Restrooms

Electricity Amperage Available: No Electricity Available

Camping Facilities:

Food Available: Food Available (1-5 mi.)

Security Available and Hours On Duty:

GENERAL INFORMATION AND COMMENTS

Special/Pre-Planned Events and Dates:

Comments:

Photo URL:

