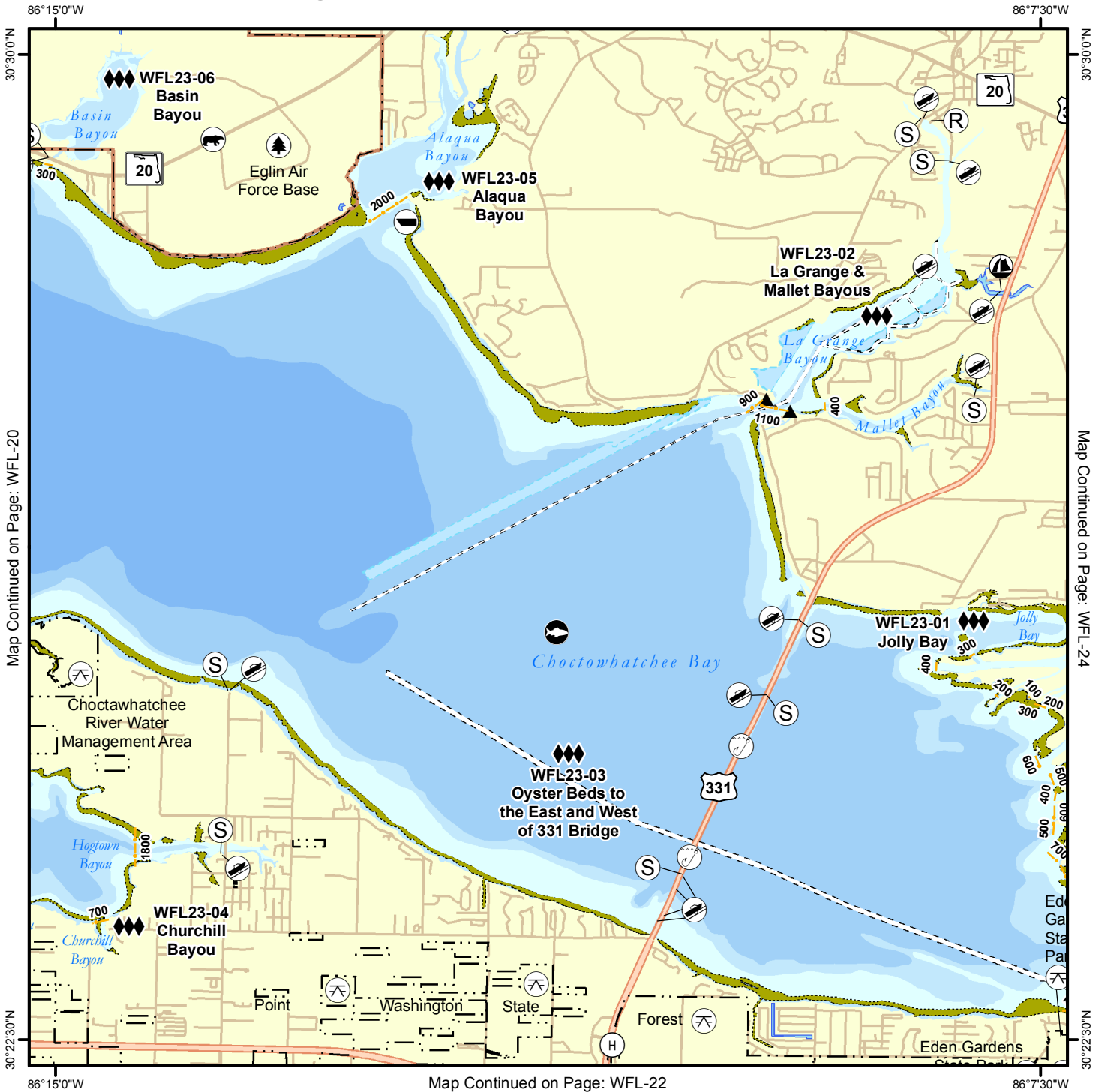


# Geographic Response Plan Map: WFL-23



<p><b>Environmentally Sensitive Areas</b></p> <p><b>Summer Protection Priority</b></p> <ul style="list-style-type: none"> <li>◆◆◆ A - Protect First</li> <li>◆◆ B - Protect after A Areas</li> <li>◆ C - Protect after B Areas</li> </ul> <p><b>Response Methods</b></p> <ul style="list-style-type: none"> <li>Y Skimmer</li> <li>☉ Shallow Water Skimmer</li> <li>▲ Collection Point</li> <li>▲ Natural Collection Points</li> <li>— General Booming Strategy (Length in Feet)</li> <li>▣ Incident Command Posts</li> <li>Ⓢ Staging Areas</li> <li>Ⓡ Oil Spill Risk Sites</li> <li>ⓔ Equipment Storage Locations</li> <li>Ⓜ Beach or Water Access</li> </ul>	<p><b>Bio-Socioeconomic</b></p> <ul style="list-style-type: none"> <li>✈ Airport</li> <li>Ⓜ Aquaculture</li> <li>Ⓜ Aquatic Preserve/State Park</li> <li>Ⓜ Artificial Reef/Hardbottom</li> <li>Ⓜ Beach Mouse Habitat</li> <li>Ⓜ Black Bear Habitat</li> <li>Ⓜ Boat Ramp</li> <li>Ⓜ Coast Guard</li> <li>Ⓜ Diving</li> <li>Ⓜ Flatwoods Salamander</li> <li>Ⓜ Heliport</li> <li>Ⓜ High Recreational Beach</li> <li>Ⓜ Manatee</li> </ul>	<ul style="list-style-type: none"> <li>Ⓜ Marina</li> <li>Ⓜ NERR</li> <li>Ⓜ National Park</li> <li>Ⓜ Naval Base</li> <li>Ⓜ Panama City Crayfish</li> <li>Ⓜ Power Plant</li> <li>Ⓜ Reptile Habitat of Concern</li> <li>Ⓜ Sea Turtle Nesting</li> <li>Ⓜ Shore Bird Habitat</li> <li>Ⓜ Spring</li> <li>Ⓜ Sturgeon</li> <li>Ⓜ Water Intake</li> <li>Ⓜ Wildlife Refuge</li> </ul>	<ul style="list-style-type: none"> <li>🌿 Sea Turtle Nesting Beach</li> <li>📏 Federal Managed Areas</li> <li>📏 State Managed Areas</li> <li>📏 Aquaculture/Oysters</li> <li>📏 State Waters/County Line</li> <li>📏 USCG Sector Boundary</li> </ul>
--	--	---	---

Sector Mobile  
Area Committee

N  
S  
E  
W

Fish and Wildlife  
Research Institute

0 0.5 1 1.5 2 Miles

Sector New Orleans      Sector Mobile      Sector St. Petersburg

Name: Jolly Bay

Site ID: WFL23-01

Protection Priority (Season): Spring:  Summer:  Fall:  Winter:

Site Description:

**GEOSPATIAL INFORMATION**

<b>Latitude (DMS):</b> 30° 25' 36.713"	<b>Longitude (DMS):</b> 86° 7' 49.787" W	<b>County:</b> Walton
<b>Latitude (DD):</b> 30.426865	<b>Longitude (DD):</b> -86.130496	<b>SCAT Division:</b> Walton County Division 2
<b>ESI Map:</b> WFL-23	<b>ESI Name:</b> Freeport, Fla.	
<b>NOAA Chart:</b> 11388_1	<b>CHART Name:</b> CHOCTAWHATCHEE BAY	
<b>USGS Quad:</b> 30086-D2	<b>QUAD Name:</b> Freeport	

Managed Area (if applicable):

General Location: Destin Division of Sector

**CONTACT INFORMATION**

**Contacts:** Walton County EOC (Director) 850-892-8065; NRC 800-424-8802; FL State Watch Office 800-320-0519; FWC Non-Game Biologist 850-265-3676; DEP-OER 850-595-8300; D-8 Duty NOAA SSC (24hr) 206-375-5697; DOI - Regional Environmental Officer 404-331-4524 or 404-852-5414

**RESOURCES AT RISK INFORMATION**

**Shoreline Type:** Exposed marshes, forested wetlands, swamps

**Habitat:** Marsh, submerged aquatic vegetation

**Wildlife:** Blue and Stone Crab, Pink, White, & Brown Shrimp, Bald Eagle (T), Gulf Sturgeon (T), alligators, raptors

**Threaten/Endangered Species:** Bald Eagle (T), Gulf Sturgeon (T)

Socio-Economic Resources:

**RESPONSE CONSIDERATIONS**

**Staging Area:** 331 Bridge Causeway Boat Ramp

Collection Points:

**Area Access:** Boat, vehicle

**Spill Risk:** Intercoastal waterway. Recreational and commercial vessels

Response Resources:

**PROTECTION STRATEGY INFORMATION**

<b>Tidal Range (FT):</b> 2.3	<b>Average Current (KTS):</b>	<b>Ease of Protection:</b> Unknown
<b>Min. Boom Length (FT):</b>	<b>Boom Type:</b>	<b>Booming Method:</b> Protection/Exclusion

**Protection Strategy:** Protect tidal creeks and marshes.



Name: La Grange & Mallet Bayous

Site ID: WFL23-02

Protection Priority (Season): Spring:  Summer:  Fall:  Winter:

Site Description:

**GEOSPATIAL INFORMATION**

Latitude (DMS): 30° 28' 0.709" N Longitude (DMS): 86° 8' 44.788" W County: Walton  
 Latitude (DD): 30.466864 Longitude (DD): -86.145774 SCAT Division: Walton County Division 2  
 ESI Map: WFL-23 ESI Name: Freeport, Fla.  
 NOAA Chart 11388\_1 CHART Name: CHOCTAWHATCHEE BAY  
 USGS Quad: 30086-D2 QUAD Name: Freeport

Managed Area (if applicable):

General Location: Destin Division of Sector

**CONTACT INFORMATION**

Contacts: Walton County EOC (Director) 850-892-8065; NRC 800-424-8802; FL State Watch Office 800-320-0519; FWC Non-Game Biologist 850-265-3676; DEP-OER 850-595-8300; D-8 Duty NOAA SSC (24hr) 206-375-5697; DOI - Regional Environmental Officer 404-331-4524 or 404-852-5414

**RESOURCES AT RISK INFORMATION**

Shoreline Type: Exposed marshes, sheltered marshes, fine grained sand beaches, sheltered rocky shore/seawall

Habitat: Marshes and tidal creeks

Wildlife: Blue and Stone Crab, Pink, White, & Brown Shrimp, Eastern Oyster, Seagrass, Seaside Sparrow, Brown Pelican, Florida Black Bear (T) in coastal areas, Snowy Plover (T), Bald Eagle (T), poss. Gulf Sturgeon (T), poss. Gulf Sturgeon (T)

Threaten/Endangered Species: Snowy Plover (T), Bald Eagle (T), poss. Gulf Sturgeon (T)

Socio-Economic Resources: Murphy Oil Energy, recreational fishing, residential area

**RESPONSE CONSIDERATIONS**

Staging Area: Howlin Dowlins Private Boat Storage and Launch, Four Lake Creek, 331 Bridge

Collection Points: Survey shoreline within Bayou to determine collection points.

Area Access: Boat

Spill Risk: Recreational, intercoastal waterway. Murphy Oil - Freeport Terminal

Response Resources:

**PROTECTION STRATEGY INFORMATION**

Tidal Range (FT): 2.3 Average Current (KTS): Ease of Protection: Unknown  
 Min. Boom Length (FT): Boom Type: Booming Method: Protection/Exclusion  
 Protection Strategy: Protect tidal creeks and marshes. If source of discharge is Murphy Oil, deploy boom at Fourmile Creek. If discharge is from within La Grange Bayou, deploy boom at Mallet Bayou and use deflection boom to collection point. If source of discharge is outside of La Grange Bayou, use deflection boom to collect on either side of the Bayou entrance.



Name: Oyster Beds to the East and West of 331 Bridge

Site ID:

WFL23-03

Protection Priority (Season): Spring:  Summer:  Fall:  Winter: 

## Site Description:

## GEOSPATIAL INFORMATION

Latitude (DMS): 30° 24' 40.524"

Longitude (DMS): 86° 11' 5.719" W

County: Walton

Latitude (DD): 30.411257

Longitude (DD): -86.184922

SCAT Division: Walton County Division 2

ESI Map: WFL-23

ESI Name: Freeport, Fla.

NOAA Chart 11388\_1

CHART Name CHOCTAWHATCHEE BAY

USGS Quad: 30086-D2

QUAD Name: Freeport

## Managed Area (if applicable):

General Location: Several oyster beds on either side of HWY-331 bridge (&lt;1mile).

## CONTACT INFORMATION

**Contacts:** Walton County EOC (Director) 850-892-8065; FDACS-Division of Aquaculture (Director) 850-488-5471; NRC 800-424-8802; FL State Watch Office 800-320-0519; FWC Non-Game Biologist 850-265-3676; DEP-OER 850-595-8300; D-8 Duty NOAA SSC (24hr) 206-375-5697; DOI - Regional Environmental Officer 404-331-4524 or 404-852-5414

## RESOURCES AT RISK INFORMATION

Shoreline Type: NA-open water

**Habitat:** Oyster beds, seagrass, 10A: Salt- and brackish- water marsh; 10B: Freshwater marsh; 10C: Swamps; 10D: Scrub-shrub wetlands; Mangroves; 9A: Sheltered tidal flats; Mud flats

**Wildlife:** Oysters, sea turtles, manatees, dolphins, wading birds, raptors, Alabama shad, bivalves, Black skimmer, cephalopod, crabs, diving birds, dolphin, gulls/terns, Osprey, oyster, pelican, shrimp, waterfowl

**Threaten/Endangered Species:** Green sea turtle, Gulf sturgeon, Sea Turtles (Green, Hawksbill, Kemp's ridley, Leatherback, Loggerhead), Loggerhead sea turtle, Smalltooth sawfish, West Indian Manatee

**Socio-Economic Resources:** Potential aquaculture

## RESPONSE CONSIDERATIONS

**Staging Area** US-331 Boat Ramps, Alligator Point

**Collection Points:** US-331 Bridge Boat Ramps

**Area Access:** Boat, vehicle

**Spill Risk:** Recreational and commercial vessels

**Response Resources:**

## PROTECTION STRATEGY INFORMATION

**Tidal Range (FT):**

**Average Current (KTS):**

**Ease of Protection:** Hard

**Min. Boom Length (FT):**

**Boom Type:** Hard

**Booming Method:** Protection/Exclusion

**Protection Strategy:** Cascading deflection boom to bridge and collect at staging areas and boat ramps.



Name: Churchhill Bayou

Site ID: WFL23-04

Protection Priority (Season): Spring:  Summer:  Fall:  Winter:

Site Description:

**GEOSPATIAL INFORMATION**

Latitude (DMS): 30° 23' 22.718" Longitude (DMS): 86° 14' 39.798" County: Walton  
 Latitude (DD): 30.389644 Longitude (DD): -86.244388 SCAT Division: Walton County Division 1  
 ESI Map: WFL-23 ESI Name: Freeport, Fla.  
 NOAA Chart 11388\_1 CHART Name: CHOCTAWHATCHEE BAY  
 USGS Quad: 30086-D2 QUAD Name: Freeport

Managed Area (if applicable):

General Location: Destin Division of Sector

**CONTACT INFORMATION**

Contacts: Walton County EOC (Director) 850-892-8065; NRC 800-424-8802; FL State Watch Office 800-320-0519; FWC Non-Game Biologist 850-265-3676; DEP-OER 850-595-8300; D-8 Duty NOAA SSC (24hr) 206-375-5697; DOI - Regional Environmental Officer 404-331-4524 or 404-852-5414

**RESOURCES AT RISK INFORMATION**

Shoreline Type: Exposed marshes

Habitat: Marsh, submerged aquatic vegetation

Wildlife: Blue and Stone Crab, Pink, White, & Brown Shrimp, Eastern Oyster, Seagrass, Seaside Sparrow, Loggerhead Sea Turtle (T), Choctawhatchee Beach Mouse (E), Florida Black Bear (T) in coastal areas, Snowy Plover (T), possible Gulf Sturgeon (T)

Threaten/Endangered Species: Loggerhead Sea Turtle (T), Choctawhatchee Beach Mouse (E), Florida Black Bear (T) in coastal areas, Snowy Plover (T), Gulf Sturgeon (T),

Socio-Economic Resources:

**RESPONSE CONSIDERATIONS**

Staging Area Charles E. Cessna Landing, Bishop Road Boat Ramp

Collection Points:

Area Access: Boat, vehicle

Spill Risk: Recreational

Response Resources:

**PROTECTION STRATEGY INFORMATION**

Tidal Range (FT): 2.3 Average Current (KTS): Ease of Protection: Unknown  
 Min. Boom Length (FT): Boom Type: Booming Method: Protection/Exclusion

Protection Strategy: Protect tidal creeks and marshes.



Name: Alaqua Bayou

Site ID: WFL23-05

Protection Priority (Season): Spring:  Summer:  Fall:  Winter:

Site Description:

**GEOSPATIAL INFORMATION**

Latitude (DMS): 30° 29' 11.708" Longitude (DMS): 86° 12' 10.793" County: Walton  
 Latitude (DD): 30.486585 Longitude (DD): -86.202998 SCAT Division: Walton County Division 1  
 ESI Map: WFL-23 ESI Name: Freeport, Fla.  
 NOAA Chart 11388\_1 CHART Name: CHOCTAWHATCHEE BAY  
 USGS Quad: 30086-D2 QUAD Name: Freeport

Managed Area (if applicable):

General Location: Destin Division of Sector

**CONTACT INFORMATION**

Contacts: Walton County EOC (Director) 850-892-8065; Eglin Air Force Base (Spill Response Mgr) 850-240-1628; NRC 800-424-8802; FL State Watch Office 800-320-0519; FWC Non-Game Biologist 850-265-3676; DEP-OER 850-595-8300; D-8 Duty NOAA SSC (24hr) 206-375-5697; DOI - Regional Environmental Officer 404-331-4524 or 404-852-5414

**RESOURCES AT RISK INFORMATION**

Shoreline Type: Sheltered marshes, fine grained sand beach, exposed marsh

Habitat: Marsh and Tidal creeks

Wildlife: Blue and Stone Crab, Pink, White, & Brown Shrimp, Eastern Oyster, Seagrass, Seaside Sparrow, Brown Pelican, Florida Black Bear (T) in coastal areas, Bald Eagle (T), poss. Gulf Sturgeon (T),

Threaten/Endangered Species: Bald Eagle (T), poss. Gulf Sturgeon (T)

Socio-Economic Resources:

**RESPONSE CONSIDERATIONS**

Staging Area Alligator Point Boat Ramp  
 Collection Points: Shallow water skimmer  
 Area Access: Boat, vehicle  
 Spill Risk: Recreational, intercoastal waterway

Response Resources:

**PROTECTION STRATEGY INFORMATION**

Tidal Range (FT): 2.3 Average Current (KTS): Ease of Protection: Medium  
 Min. Boom Length (FT): 2,300 Boom Type: Hard Booming Method: Protection/Exclusion  
 Protection Strategy: Deploy 2,300' of deflection/protection boom and collect in cove with shallow water skimmers. Southwest side of Alaqua Bayou is restricted access - contact AFB.



Name: Basin Bayou

Site ID: WFL23-06

Protection Priority (Season): Spring:  Summer:  Fall:  Winter:

Site Description:

**GEOSPATIAL INFORMATION**

Latitude (DMS): 30° 29' 38.708" Longitude (DMS): 86° 14' 35.796" County: Walton  
 Latitude (DD): 30.494085 Longitude (DD): -86.243277 SCAT Division: Walton County Division 1  
 ESI Map: WFL-23 ESI Name: Freeport, Fla.  
 NOAA Chart: 11388\_1 CHART Name: CHOCTAWHATCHEE BAY  
 USGS Quad: 30086-D2 QUAD Name: Freeport

Managed Area (if applicable): Eglin Air Force Base

General Location: Destin Division of Sector

**CONTACT INFORMATION**

Contacts: Walton County EOC (Director) 850-892-8065; Eglin Air Force Base (Spill Response Mgr) 850-240-1628; NRC 800-424-8802; FL State Watch Office 800-320-0519; FWC Non-Game Biologist 850-265-3676; DEP-OER 850-595-8300; D-8 Duty NOAA SSC (24hr) 206-375-5697; DOI - Regional Environmental Officer 404-331-4524 or 404-852-5414

**RESOURCES AT RISK INFORMATION**

Shoreline Type: Sheltered marshes

Habitat: Tidal creeks, marshes, swamps

Wildlife: Blue and Stone Crab, Pink, White, & Brown Shrimp, Seaside Sparrow, Brown Pelican, Florida Black Bear (T) in coastal areas, Bald Eagle (T), poss. Gulf Sturgeon (T)

Threaten/Endangered Species: Bald Eagle (T), poss. Gulf Sturgeon (T)

Socio-Economic Resources:

**RESPONSE CONSIDERATIONS**

Staging Area: Nicks Fishing Lodge Restaurant  
 Collection Points: Conduct shoreline survey within Bayou to locate collection points.  
 Area Access: Boat, vehicle  
 Spill Risk: Recreational vessels  
 Response Resources:

**PROTECTION STRATEGY INFORMATION**

Tidal Range (FT): 2.3 Average Current (KTS): Ease of Protection:  
 Min. Boom Length (FT): Boom Type: Hard Booming Method: Protection/Exclusion  
 Protection Strategy: Boom mouth of Basin Bayou.





Facility Name: Alaqua Creek Park Boat Ramp

Site ID: WL00100XC

Data Collector (Agency): USCG

Survey Type: Planning

Survey Date: 2008-06-27 00:00

Managing Agency: Walton County, Parks and Recreation

General Manager/Contact Person:

Contact Phone #: 850-892-8108

SCAT Description: Walton County Division 2

Physical Address: 16 Johns Lane

City: Freeport

State: Florida

Zip Code 32439

County: Walton

## GEOSPATIAL INFORMATION

Latitude (DMS): 30° 30' 44.729" N

Longitude (DMS): 86° 11' 11.791" W

Latitude (DD): 30.51242465

Longitude (DD): -86.18660848

## SITE DESCRIPTION

Site Type: Staging Area; Boat Ramp

Access: Government Owned for General Public Use

Operational Status: Open For Business

Scale of Staging Area:

Hours of Operation: Dawn to Dusk

Days of Operation: 7 days, Sunrise to Sunset

Water Type: Freshwater

Water Body Name: Alaqua Creek

Boat Launch Capability: Boats Under 25 ft

Number of Boat Ramps: 1

Number of Boat Ramp Lanes: 1

Number of Boat Slips: 0

Number of Moorings: 1

Boat Ramp Surface Composition: Poured in place concrete

Water Depth at End of Boat Ramp: 4 - 6 feet

Wave Energy at Site: Low

Shoreline Type in Viewable Viscinity: Rip-Rap

Access Constraints: No Access Constraints

Crane Capabilities: Not suitable for crane

Collection Point Capabilities:

Parking Capacity for Trailers: 6

Parking Capacity for Cars: 30

Parking Lot Dimensions:

Parking Surface: Gravel/Sand/Dirt

Capable for Light or Heavy Equipment and Type:

Boom Available On-Site and Length:

## ADDITIONAL AMMENITIES

Fuels Available: No Fuel

Propane or Natural Gas Available

Water Available: No Water

Fire Hydrant:

Pumpout Available: No Pumpout

Bathrooms Available: Port-a-let

Electricity Amperage Available: No Electricity Available

Camping Facilities:

Food Available: Food Available (1-5 mi.)

Security Available and Hours On Duty:

## GENERAL INFORMATION AND COMMENTS

Special/Pre-Planned Events and Dates:

Comments:

Photo URL: [http://ocean.floridamarine.org/waterphotos/ramp\\_photos/photo\\_id/1305/index.htm](http://ocean.floridamarine.org/waterphotos/ramp_photos/photo_id/1305/index.htm)



Facility Name: Walton County Hwy 331 Public Boat Launch 1

Site ID: WL00260YG

Data Collector (Agency): USCG

Survey Type: Planning

Survey Date: 2008-06-27 00:00

Managing Agency: Walton County

General Manager/Contact Person:

Contact Phone #:

SCAT Description: Walton County Division 2

Physical Address: 21144 US Highway 331 South

City: Freeport

State: Florida

Zip Code 32439

County: Walton

## GEOSPATIAL INFORMATION

Latitude (DMS): 30° 25' 40.944" N

Longitude (DMS): 86° 9' 20.550" W

Latitude (DD): 30.42827662

Longitude (DD): -86.15566831

## SITE DESCRIPTION

Site Type: Staging Area; Boat Ramp

Access: Government Owned for General Public Use

Operational Status: Open For Business

Scale of Staging Area:

Hours of Operation: 24 Hours

Days of Operation: 7 days a week

Water Type: Saltwater

Water Body Name: Choctawhatchee Bay

Boat Launch Capability: Boats Under 25 ft

Number of Boat Ramps: 1

Number of Boat Ramp Lanes: 1

Number of Boat Slips: 0

Number of Moorings: 5

Boat Ramp Surface Composition: Poured in place concrete

Water Depth at End of Boat Ramp: 2 - 4 feet

Wave Energy at Site: Medium

Shoreline Type in Viewable Vicinity: Seawall; Rip-Rap

Access Constraints: No Access Constraints

Crane Capabilities: Not suitable for crane

Collection Point Capabilities:

Parking Capacity for Trailers: 24

Parking Capacity for Cars: 40

Parking Lot Dimensions:

Parking Surface: Gravel/Sand/Dirt

Capable for Light or Heavy Equipment and Type:

Boom Available On-Site and Length:

## ADDITIONAL AMMENITIES

Fuels Available: No Fuel

Propane or Natural Gas Available

Water Available: Yes

Fire Hydrant:

Pumpout Available: No Pumpout

Bathrooms Available: Port-a-let

Electricity Amperage Available: 120 V Standard 15 Amp

Camping Facilities:

Food Available: Food Available (1-5 mi.)

Security Available and Hours On Duty:

## GENERAL INFORMATION AND COMMENTS

Special/Pre-Planned Events and Dates:

Comments: Additional single lane ramp across 331.

Photo URL: [http://ocean.floridamarine.org/waterphotos/ramp\\_photos/photo\\_id/1312/index.htm](http://ocean.floridamarine.org/waterphotos/ramp_photos/photo_id/1312/index.htm)

Facility Name: Thomas Pilcher Landing

Site ID:

Data Collector (Agency): USCG

Survey Type: Planning

Survey Date: 2008-06-27 00:00

Managing Agency: County

General Manager/Contact Person:

Contact Phone #:

SCAT Description: Walton County Division 2

Physical Address: US 331

City: Santa Rosa

State: Florida

Zip Code 32459

County: Walton

## GEOSPATIAL INFORMATION

Latitude (DMS): 30° 25' 5.322" N

Longitude (DMS): 86° 9' 43.926" W

Latitude (DD): 30.41814499

Longitude (DD): -86.16220166

## SITE DESCRIPTION

Site Type: Staging Area; Boat Ramp

Access: Public

Operational Status:

Scale of Staging Area:

Hours of Operation: 24 hours

Days of Operation: 7 days a week

Water Type: Salt

Water Body Name: Choctawhatchee Bay

Boat Launch Capability: Boats Under 25 ft

Number of Boat Ramps: 1

Number of Boat Ramp Lanes: 1

Number of Boat Slips: 0

Number of Moorings: 1

Boat Ramp Surface Composition: Cement or Asphalt

Water Depth at End of Boat Ramp: 2 - 4 feet

Wave Energy at Site: Medium

Shoreline Type in Viewable Viscinity: Rip-Rap; Soft Stem Veg.

Access Constraints: No Access Constraints

Crane Capabilities: Not suitable for crane

Collection Point Capabilities:

Parking Capacity for Trailers: 5

Parking Capacity for Cars: 10

Parking Lot Dimensions:

Parking Surface: Dirt/Gravel; Grass

Capable for Light or Heavy Equipment and Type:

Boom Available On-Site and Length:

## ADDITIONAL AMMENITIES

Fuels Available: No Fuel

Propane or Natural Gas Available

Water Available: No Water

Fire Hydrant:

Pumpout Available: No Pumpout

Bathrooms Available: Port-O-Lets

Electricity Amperage Available: No Electricity Available

Camping Facilities:

Food Available: Food Available (1-5 mi.)

Security Available and Hours On Duty:

## GENERAL INFORMATION AND COMMENTS

Special/Pre-Planned Events and Dates:

Comments:

Photo URL:



Facility Name: Four Lake Creek

Site ID: WL00140IC

Data Collector (Agency): USCG

Survey Type: Planning

Survey Date: 2008-06-27 00:00

Managing Agency: City of Freeport

General Manager/Contact Person:

Contact Phone #:

SCAT Description: Walton County Division 2

Physical Address: end of Shipyard Rd

City: Freeport

State: Florida

Zip Code 32439

County: Walton

## GEOSPATIAL INFORMATION

Latitude (DMS): 30° 29' 12.619" N

Longitude (DMS): 86° 8' 11.939" W

Latitude (DD): 30.48683848

Longitude (DD): -86.13664972

## SITE DESCRIPTION

Site Type: Staging Area; Boat Ramp

Access: Government Owned for General Public Use

Operational Status: Open For Business

Scale of Staging Area:

Hours of Operation: 24 Hours

Days of Operation: 7 days a week

Water Type: Brackish

Water Body Name: Choctawhatchee Bay / LaGrange Bayou

Boat Launch Capability: RAMP - Boats OVER 25 FT

Number of Boat Ramps: 1

Number of Boat Ramp Lanes: 1

Number of Boat Slips: 25

Number of Moorings: 25

Boat Ramp Surface Composition: Sand

Water Depth at End of Boat Ramp: 4 - 6 feet

Wave Energy at Site: Low

Shoreline Type in Viewable Viscinity: Seawall; Soft Stem Veg.

Access Constraints: No Access Constraints

Crane Capabilities: Suitable for large crane

Collection Point Capabilities:

Parking Capacity for Trailers: 8

Parking Capacity for Cars: 40

Parking Lot Dimensions:

Parking Surface: Gravel/Sand/Dirt

Capable for Light or Heavy Equipment and Type:

Boom Available On-Site and Length:

## ADDITIONAL AMMENITIES

Fuels Available: No Fuel

Propane or Natural Gas Available

Water Available: Yes

Fire Hydrant:

Pumpout Available: No Pumpout

Bathrooms Available: None

Electricity Amperage Available: No Electricity Available

Camping Facilities:

Food Available: Food Available (1-5 mi.)

Security Available and Hours On Duty:

## GENERAL INFORMATION AND COMMENTS

Special/Pre-Planned Events and Dates:

Comments:

Photo URL: [http://ocean.floridamarine.org/waterphotos/ramp\\_photos/photo\\_id/1304/index.htm](http://ocean.floridamarine.org/waterphotos/ramp_photos/photo_id/1304/index.htm)

Facility Name: Charles E Cessna Landing

Site ID: WL00228IZ

Data Collector (Agency): US EPA

Survey Type: Planning

Survey Date: 2008-07-03 00:00

Managing Agency: Walton County

General Manager/Contact Person:

Contact Phone #: (850)-892-8703

SCAT Description: Walton County Division 1

Physical Address: County Road 393 North

City: Santa Rosa Beach

State: Florida

Zip Code 32459

County: Walton

## GEOSPATIAL INFORMATION

Latitude (DMS): 30° 23' 55.158" N

Longitude (DMS): 86° 13' 43.986" W

Latitude (DD): 30.39865500

Longitude (DD): -86.22888500

## SITE DESCRIPTION

Site Type: Staging Area; Boat Ramp

Access: Government Owned for General Public Use

Operational Status: Open For Business

Scale of Staging Area:

Hours of Operation: 24 Hours

Days of Operation: 7 days a week

Water Type: Saltwater

Water Body Name: Choctawhatchee Bay / Hogtown Bayou

Boat Launch Capability: Boats Under 25 ft

Number of Boat Ramps: 1

Number of Boat Ramp Lanes: 2

Number of Boat Slips: 0

Number of Moorings: 2

Boat Ramp Surface Composition: Pre-cast concrete slabs

Water Depth at End of Boat Ramp: 0 - 2 feet; 2 - 4 feet

Wave Energy at Site: Low

Shoreline Type in Viewable Vicinity: Soft Sand; Soft Stem Veg.

Access Constraints: No Access Constraints

Crane Capabilities: Not suitable for crane

Collection Point Capabilities:

Parking Capacity for Trailers: 8

Parking Capacity for Cars: 50

Parking Lot Dimensions:

Parking Surface: Gravel/Sand/Dirt

Capable for Light or Heavy Equipment and Type:

Boom Available On-Site and Length:

## ADDITIONAL AMMENITIES

Fuels Available: No Fuel

Propane or Natural Gas Available

Water Available: Yes

Fire Hydrant:

Pumpout Available: No Pumpout

Bathrooms Available: Flush

Electricity Amperage Available: No Electricity Available

Camping Facilities:

Food Available: Food Available (1-5 mi.)

Security Available and Hours On Duty:

## GENERAL INFORMATION AND COMMENTS

Special/Pre-Planned Events and Dates:

Comments:

Photo URL: [http://ocean.floridamarine.org/waterphotos/ramp\\_photos/photo\\_id/1317/index.htm](http://ocean.floridamarine.org/waterphotos/ramp_photos/photo_id/1317/index.htm)

Facility Name: 4 Mile Creek Boat Ramp

Site ID: WL00235FO

Data Collector (Agency): USCG

Survey Type: Planning

Survey Date: 2008-06-27 00:00

Managing Agency: City of Freeport

General Manager/Contact Person:

Contact Phone #: (850)-835-2822

SCAT Description: Walton County Division 2

Physical Address: E Bay Loop Rd at North St

City: Freeport

State: Florida

Zip Code 32439

County: Walton

## GEOSPATIAL INFORMATION

Latitude (DMS): 30° 29' 30.450" N

Longitude (DMS): 86° 8' 23.892" W

Latitude (DD): 30.49179166

Longitude (DD): -86.13996999

## SITE DESCRIPTION

Site Type: Staging Area; Boat Ramp

Access: Government Owned for General Public Use

Operational Status: Open For Business

Scale of Staging Area:

Hours of Operation: 24 Hours

Days of Operation: 7 days a week

Water Type: Freshwater

Water Body Name: Fourmile Creek

Boat Launch Capability: Boats Under 25 ft

Number of Boat Ramps: 1

Number of Boat Ramp Lanes: 1

Number of Boat Slips: 0

Number of Moorings: 0

Boat Ramp Surface Composition: Poured in place concrete

Water Depth at End of Boat Ramp: 4 - 6 feet

Wave Energy at Site: Low

Shoreline Type in Viewable Viscinity: Soft Sand; Soft Stem Veg.

Access Constraints: No Access Constraints

Crane Capabilities: Not suitable for crane

Collection Point Capabilities:

Parking Capacity for Trailers: 7

Parking Capacity for Cars: 5

Parking Lot Dimensions:

Parking Surface: Unknown

Capable for Light or Heavy Equipment and Type:

Boom Available On-Site and Length:

## ADDITIONAL AMMENITIES

Fuels Available: No Fuel

Propane or Natural Gas Available

Water Available: No Water

Fire Hydrant:

Pumpout Available: No Pumpout

Bathrooms Available: None

Electricity Amperage Available: No Electricity Available

Camping Facilities:

Food Available: Food Available (1-5 mi.)

Security Available and Hours On Duty:

## GENERAL INFORMATION AND COMMENTS

Special/Pre-Planned Events and Dates:

Comments:

Photo URL: [http://ocean.floridamarine.org/waterphotos/ramp\\_photos/photo\\_id/1303/index.htm](http://ocean.floridamarine.org/waterphotos/ramp_photos/photo_id/1303/index.htm)

Facility Name: Alaqua Creek Boat Launch

Site ID: WL00257ZB

Data Collector (Agency): USCG

Survey Type: Planning

Survey Date: 2008-06-27 00:00

Managing Agency: Walton County, Parks and Recreation

General Manager/Contact Person:

Contact Phone #:

SCAT Description: Walton County Division 1

Physical Address: 3609 Portland Park Road

City: Freeport

State: Florida

Zip Code 32439

County: Walton

## GEOSPATIAL INFORMATION

Latitude (DMS): 30° 30' 26.466" N

Longitude (DMS): 86° 11' 37.206" W

Latitude (DD): 30.50735166

Longitude (DD): -86.19366833

## SITE DESCRIPTION

Site Type: Staging Area; Boat Ramp

Access: Government Owned for General Public Use

Operational Status: Open For Business

Scale of Staging Area:

Hours of Operation: 24 Hours

Days of Operation: 7 days a week

Water Type: Freshwater

Water Body Name: Alaqua Creek

Boat Launch Capability: Boats Under 25 ft

Number of Boat Ramps: 1

Number of Boat Ramp Lanes: 1

Number of Boat Slips: 0

Number of Moorings: 0

Boat Ramp Surface Composition: Asphalt

Water Depth at End of Boat Ramp: 4 - 6 feet

Wave Energy at Site: Low

Shoreline Type in Viewable Vicinity: Soft Stem Veg.; Hard Stem Veg.

Access Constraints: No Access Constraints

Crane Capabilities: Not suitable for crane

Collection Point Capabilities:

Parking Capacity for Trailers: 12

Parking Capacity for Cars: 10

Parking Lot Dimensions:

Parking Surface: Gravel/Sand/Dirt

Capable for Light or Heavy Equipment and Type:

Boom Available On-Site and Length:

## ADDITIONAL AMMENITIES

Fuels Available: No Fuel

Propane or Natural Gas Available

Water Available: No Water

Fire Hydrant:

Pumpout Available: No Pumpout

Bathrooms Available: None

Electricity Amperage Available: No Electricity Available

Camping Facilities:

Food Available: Food Available (1-5 mi.)

Security Available and Hours On Duty:

## GENERAL INFORMATION AND COMMENTS

Special/Pre-Planned Events and Dates:

Comments:

Photo URL: [http://ocean.floridamarine.org/waterphotos/ramp\\_photos/photo\\_id/1306/index.htm](http://ocean.floridamarine.org/waterphotos/ramp_photos/photo_id/1306/index.htm)

Facility Name: Walton County boat Ramp 3

Site ID:

Data Collector (Agency): USCG

Survey Type: Planning

Survey Date: 2008-06-27 00:00

Managing Agency:

General Manager/Contact Person:

Contact Phone #:

SCAT Description: Walton County Division 2

Physical Address: ~US HWY 331

City: Santa Rosa

State: Florida

Zip Code 32459

County: Walton

## GEOSPATIAL INFORMATION

Latitude (DMS): 30° 23' 44.994" N

Longitude (DMS): 86° 10' 13.350" W

Latitude (DD): 30.39583166

Longitude (DD): -86.17037499

## SITE DESCRIPTION

Site Type: Staging Area; Boat Ramp

Access: Public

Operational Status:

Scale of Staging Area:

Hours of Operation: 24 hours

Days of Operation: 7 days a week

Water Type: Brackish

Water Body Name: Choctawhatchee Bay

Boat Launch Capability: Boats Under 25 ft

Number of Boat Ramps: 1

Number of Boat Ramp Lanes: 1

Number of Boat Slips: 0

Number of Moorings: 0

Boat Ramp Surface Composition: Cement or Asphalt

Water Depth at End of Boat Ramp: 2 - 4 feet

Wave Energy at Site: Medium

Shoreline Type in Viewable Viscinity: Seawall; Soft Stem Veg.

Access Constraints: No Access Constraints

Crane Capabilities: Not suitable for crane

Collection Point Capabilities:

Parking Capacity for Trailers: 25

Parking Capacity for Cars: 50

Parking Lot Dimensions:

Parking Surface: Paved - Concrete or Asphalt; Dirt/Gravel; Grass

Capable for Light or Heavy Equipment and Type:

Boom Available On-Site and Length:

## ADDITIONAL AMMENITIES

Fuels Available:

Propane or Natural Gas Available

Water Available: No Water

Fire Hydrant:

Pumpout Available: No Pumpout

Bathrooms Available: No Restrooms

Electricity Amperage Available: No Electricity Available

Camping Facilities:

Food Available: Food Available (1-5 mi.)

Security Available and Hours On Duty:

## GENERAL INFORMATION AND COMMENTS

Special/Pre-Planned Events and Dates:

Comments:

Photo URL: [http://ocean.floridamarine.org/waterphotos/ramp\\_photos/photo\\_id/1314/index.htm](http://ocean.floridamarine.org/waterphotos/ramp_photos/photo_id/1314/index.htm)



Facility Name: Howlin Dowlins Prvate Boat Storage and Launch

Site ID: WL00297ER

Data Collector (Agency): USCG

Survey Type: Planning

Survey Date: 2008-06-27 00:00

Managing Agency:

General Manager/Contact Person:

Contact Phone #: 850-685-1637

SCAT Description: Walton County Division 2

Physical Address: 135 Sweetwater Lane

City: Freeport

State: Florida

Zip Code 32439

County: Walton

## GEOSPATIAL INFORMATION

Latitude (DMS): 30° 27' 28.182" N

Longitude (DMS): 86° 8' 0.036" W

Latitude (DD): 30.45782833

Longitude (DD): -86.13334333

## SITE DESCRIPTION

Site Type: Staging Area; Boat Ramp

Access: Private

Operational Status:

Scale of Staging Area:

Hours of Operation: 600 to 1830

Days of Operation: 7 days a week

Water Type: Salt

Water Body Name: Mallet Bayou

Boat Launch Capability: Boats Under 25 ft

Number of Boat Ramps: 1

Number of Boat Ramp Lanes: 1

Number of Boat Slips: 0

Number of Moorings: 0

Boat Ramp Surface Composition: Cement or Asphalt

Water Depth at End of Boat Ramp: 4 - 6 feet

Wave Energy at Site: Low

Shoreline Type in Viewable Viscinity: Soft Sand; Soft Stem Veg.

Access Constraints: Other Difficulty

Crane Capabilities: Not suitable for crane

Collection Point Capabilities:

Parking Capacity for Trailers: 30

Parking Capacity for Cars: 60

Parking Lot Dimensions:

Parking Surface: Dirt/Gravel; Grass

Capable for Light or Heavy Equipment and Type:

Boom Available On-Site and Length:

## ADDITIONAL AMMENITIES

Fuels Available: No Fuel

Propane or Natural Gas Available

Water Available: Yes

Fire Hydrant:

Pumpout Available: No Pumpout

Bathrooms Available: Restroom Facilities

Electricity Amperage Available: 120 V Standard 15 Amp

Camping Facilities:

Food Available: Food Available (1-5 mi.)

Security Available and Hours On Duty:

## GENERAL INFORMATION AND COMMENTS

Special/Pre-Planned Events and Dates:

Comments:

Photo URL:



Facility Name: Alligator Point Boat Ramp

Site ID: WL00104LY

Data Collector (Agency): US EPA

Survey Type: Planning

Survey Date: 2008-07-03 00:00

Managing Agency: Walton County

General Manager/Contact Person:

Contact Phone #:

SCAT Description: Walton County Division 1

Physical Address: County Highway 393 North

City: Santa Rosa Beach

State: Florida

Zip Code 32459

County: Walton

## GEOSPATIAL INFORMATION

Latitude (DMS): 30° 25' 9.912" N

Longitude (DMS): 86° 13' 40.662" W

Latitude (DD): 30.41941999

Longitude (DD): -86.22796166

## SITE DESCRIPTION

Site Type: Staging Area; Boat Ramp

Access: Government Owned for General Public Use

Operational Status: Open For Business

Scale of Staging Area:

Hours of Operation: 24 Hours

Days of Operation: 7 days a week

Water Type: Saltwater

Water Body Name: Choctawhatchee Bay

Boat Launch Capability: Boats Under 25 ft

Number of Boat Ramps: 1

Number of Boat Ramp Lanes: 1

Number of Boat Slips: 0

Number of Moorings: 0

Boat Ramp Surface Composition: Poured in place concrete

Water Depth at End of Boat Ramp: 2 - 4 feet

Wave Energy at Site: Medium

Shoreline Type in Viewable Vicinity: Soft Sand; Soft Stem Veg.

Access Constraints: No Access Constraints; Other Difficulty

Crane Capabilities: Not suitable for crane

Collection Point Capabilities:

Parking Capacity for Trailers: 5

Parking Capacity for Cars: 10

Parking Lot Dimensions:

Parking Surface: Unknown

Capable for Light or Heavy Equipment and Type

Boom Available On-Site and Length:

## ADDITIONAL AMMENITIES

Fuels Available: No Fuel

Propane or Natural Gas Available

Water Available: No Water

Fire Hydrant:

Pumpout Available: No Pumpout

Bathrooms Available: None

Electricity Amperage Available: No Electricity Available

Camping Facilities:

Food Available: Food Available (1-5 mi.)

Security Available and Hours On Duty:

## GENERAL INFORMATION AND COMMENTS

Special/Pre-Planned Events and Dates:

Comments:

Photo URL: [http://ocean.floridamarine.org/waterphotos/ramp\\_photos/photo\\_id/1316/index.htm](http://ocean.floridamarine.org/waterphotos/ramp_photos/photo_id/1316/index.htm)

Name: Murphy Oil

Site ID:

MOB-R2

Site Description:

**GEOSPATIAL INFORMATION**

Latitude (DMS): 30° 29' 29.557" N

Longitude (DMS): 86° 8' 19.604" W

Latitude (DD): 30.49154369

Longitude (DD): -86.13877875

Physical Address: 424 Madison Street

City: Freeport

State: Florida

Zip Code 32439

County: Walton

**CONTACT INFORMATION**

Contacts: Charles Walter 850-835-4123

**RISK INFORMATION**

Facility Type: Bulk Oil Facility

Types of Oil: Fuel oil, gas, diesel

Most Probable Risk

Maximum Risk:

Worst Case Discharge:

