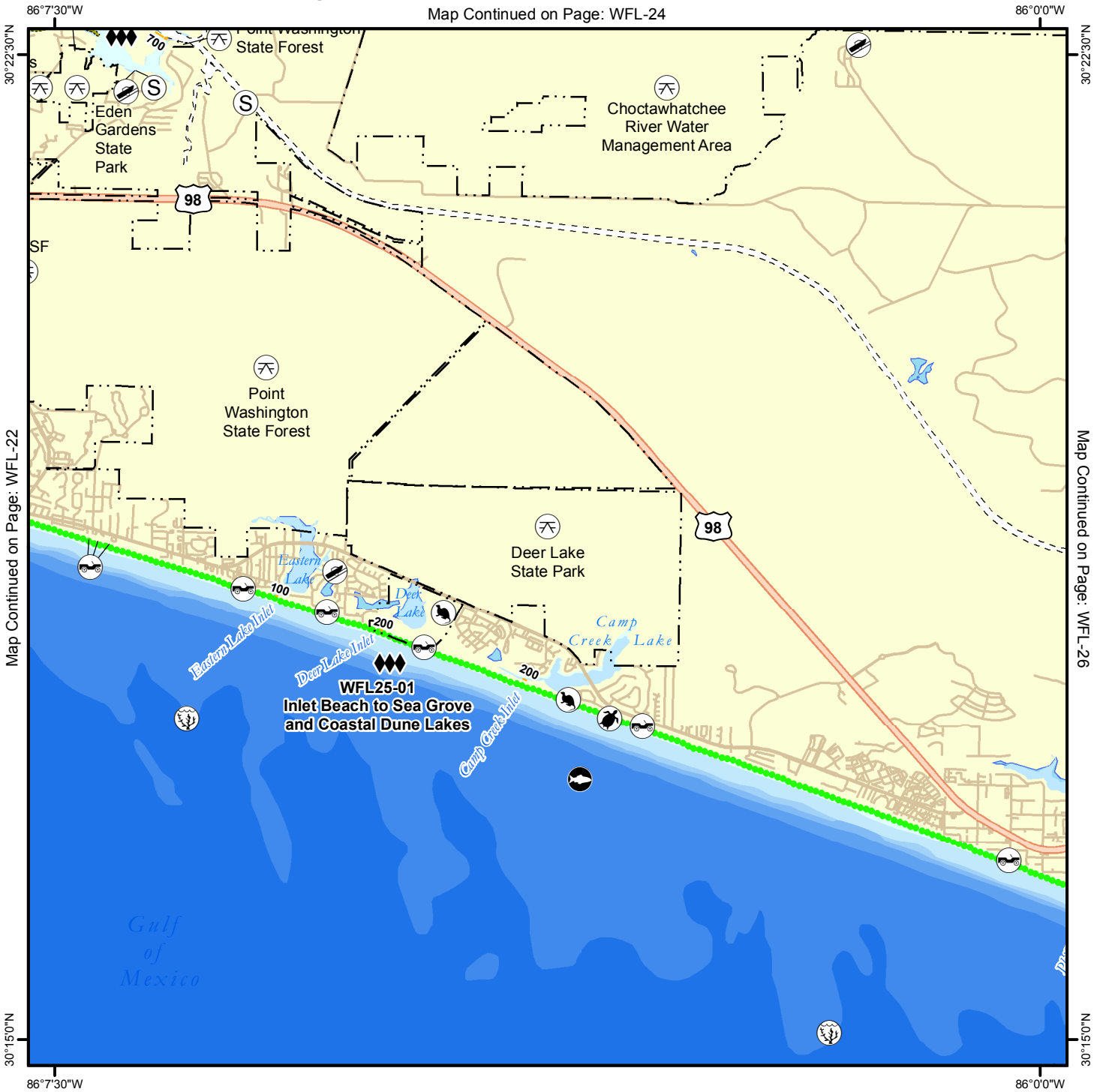


Geographic Response Plan Map: WFL-25

Map Continued on Page: WFL-24



Map Continued on Page: WFL-22

Map Continued on Page: WFL-26

- Environmentally Sensitive Areas**
- Summer Protection Priority**
- ◆◆ A - Protect First
 - ◆◆ B - Protect after A Areas
 - ◆ C - Protect after B Areas
- Response Methods**
- Y Skimmer
 - ☉ Shallow Water Skimmer
 - ▲ Collection Point
 - ▲ Natural Collection Points
 - General Booming Strategy (Length in Feet)
 - ▣ Incident Command Posts
 - Ⓢ Staging Areas
 - Ⓡ Oil Spill Risk Sites
 - ⓔ Equipment Storage Locations
 - ☉ Beach or Water Access

- Bio-Socioeconomic**
- ✈ Airport
 - 🐟 Aquaculture
 - 🌿 Aquatic Preserve/State Park
 - 🏗 Artificial Reef/Hardbottom
 - 🐭 Beach Mouse Habitat
 - 🐻 Black Bear Habitat
 - 🚤 Boat Ramp
 - 🚢 Coast Guard
 - 🤿 Diving
 - 🐸 Flatwoods Salamander
 - 🚁 Helicopter
 - 🏖 High Recreational Beach
 - 🐬 Manatee

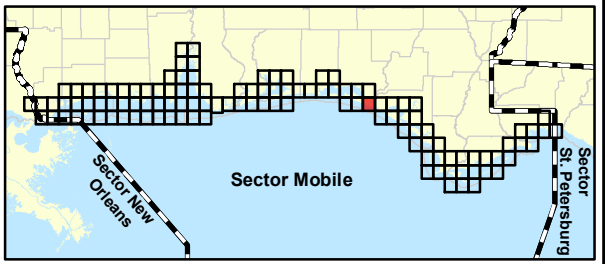
- ⚓ Marina
- 🏠 NERR
- 🌲 National Park
- ⚓ Naval Base
- 🦀 Panama City Crayfish
- ⚡ Power Plant
- 🦎 Reptile Habitat of Concern
- 🐢 Sea Turtle Nesting
- 🐦 Shore Bird Habitat
- 🌳 Spring
- 🐟 Sturgeon
- 💧 Water Intake
- 🌳 Wildlife Refuge

- 🟢 Sea Turtle Nesting Beach
- 🏠 Federal Managed Areas
- 🏠 State Managed Areas
- 🐟 Aquaculture/Oysters
- 📏 State Waters/County Line
- 🚢 USCG Sector Boundary

Sector Mobile Area Committee

Fish and Wildlife Research Institute

0 0.5 1 1.5 2 Miles



Name: Inlet Beach to Sea Grove and Coastal Dune Lakes

Site ID: WFL25-01

Protection Priority (Season): Spring: Summer: Fall: Winter:

Site Description:

GEOSPATIAL INFORMATION

Latitude (DMS): 30° 18' 2.244" N

Longitude (DMS): 86° 4' 53.339" W

County: Walton

Latitude (DD): 30.300623

Longitude (DD): -86.081483

SCAT Division: Walton County Division 2

ESI Map: WFL-25

ESI Name: Point Washington, Fla.

NOAA Chart: 11388_1

CHART Name: CHOCTAWHATCHEE BAY

USGS Quad: 30086-C1

QUAD Name: Point Washington

Managed Area (if applicable):

General Location: Highway 98 County Line west to Hwy 395, Inlet Beach to Sea Grove including Camp Creek Lake, Deer Lake, Little Deer Lake, and Eastern Lake

CONTACT INFORMATION

Contacts: Walton EOC (Dir) 850-892-8065; Deer Lake State Park (Mgr) 850-267-8300; FDEP Div of Parks (NW District 1) 850-233-5110; FDEP BER 850-595-0615; FWC Sea Turtle Biologist (Robbin Trindell) 850-922-4330 or (Tallahassee-Main) 850-488-0588; NRC 800-424-8802; FL State Watch Office 800-320-0519; FWC Non-Game Biologist 850-265-3676 or (John Himes) 850-767-3623; DEP-OER 850-595-8300; D-8 Duty NOAA SSC (24hr) 206-375-5697; DOI - Regional Environmental Officer 404-331-4524 or 404-852-5414

RESOURCES AT RISK INFORMATION

Shoreline Type: Fine to medium grained sand beaches, Salt/brackish-water sheltered marshes

Habitat: Fine-medium grained sand beaches, salt/brackish-water marshes, bogs

Wildlife: Alabama shad, Black skimmer, Bluefin tuna, Caribbean spiny lobster, cephalopod, crabs, diving birds, dolphin, gulls, terns, Osprey, pelican, shorebirds, Spanish lobster, On dune lakes: waterfowl, wading birds, fish

Threaten/Endangered Species: Choctawhatchee Beach Mouse, Gulf Sturgeon, Sea Turtles (Green, Hawksbill, Kemp's ridley, Leatherback, Loggerhead), Smalltooth sawfish, West Indian Manatee, Piping plover, Snowy plover, gopher tortoise, Least Terns

Socio-Economic Resources: Historic sites

RESPONSE CONSIDERATIONS

Staging Area: Eastern Lake Boat Ramp

Collection Points:

Area Access: Beach

Spill Risk: Recreational vessels (on dude lakes), commercial vessels

Response Resources:

PROTECTION STRATEGY INFORMATION

Tidal Range (FT):

Average Current (KTS):

Ease of Protection:

Min. Boom Length (FT):

Boom Type: Hard

Booming Method: Protection/Exclusion

Protection Strategy: Be aware of dunes. State listed plant species in dunes. Dune Lakes berm with 1-way valve. Contact Deer Lake State Park and FWC-Regional Biologist for guidance on nesting locations during shorebird and sea turtle nesting season.



Facility Name: Lamar Sikes/Old Ferry Road

Site ID:

Data Collector (Agency): US EPA

Survey Type: Planning

Survey Date: 2008-07-03 00:00

Managing Agency:

General Manager/Contact Person:

Contact Phone #: (850) 572-6163

SCAT Description: Walton County Division 2

Physical Address: 6748 Highway 77

City: Chipley

State: Florida

Zip Code 32428

County: Walton

GEOSPATIAL INFORMATION

Latitude (DMS): 30° 22' 8.160" N

Longitude (DMS): 86° 6' 2.706" W

Latitude (DD): 30.36893333

Longitude (DD): -86.10075166

SITE DESCRIPTION

Site Type: Staging Area; Boat Ramp

Access: Private

Operational Status:

Scale of Staging Area:

Hours of Operation: 24 hours

Days of Operation: 7 days a week

Water Type: Brackish

Water Body Name: Intracoastal Waterway

Boat Launch Capability: Boats Under 25 ft

Number of Boat Ramps: 1

Number of Boat Ramp Lanes: 1

Number of Boat Slips: 0

Number of Moorings: 0

Boat Ramp Surface Composition: Gravel/Dirt

Water Depth at End of Boat Ramp: 6 - 8 feet

Wave Energy at Site: Low

Shoreline Type in Viewable Viscinity: Rip-Rap

Access Constraints: Other Difficulty

Crane Capabilities: Crane Present; Suitable for large crane

Collection Point Capabilities:

Parking Capacity for Trailers: 50

Parking Capacity for Cars: 100

Parking Lot Dimensions:

Parking Surface: Dirt/Gravel

Capable for Light or Heavy Equipment and Type:

Boom Available On-Site and Length:

ADDITIONAL AMMENITIES

Fuels Available: No Fuel

Propane or Natural Gas Available

Water Available: No Water

Fire Hydrant:

Pumpout Available: No Pumpout

Bathrooms Available: No Restrooms

Electricity Amperage Available: No Electricity Available

Camping Facilities:

Food Available: Food Available (1-5 mi.)

Security Available and Hours On Duty:

GENERAL INFORMATION AND COMMENTS

Special/Pre-Planned Events and Dates:

Comments:

Photo URL:



Facility Name: Point Washington Boat Ramp

Site ID: WL00276CF

Data Collector (Agency): US EPA

Survey Type: Planning

Survey Date: 2008-07-03 00:00

Managing Agency: Walton County

General Manager/Contact Person:

Contact Phone #:

SCAT Description: Walton County Division 2

Physical Address: North County Road 395 (Azalea Street)

City: Point Washington

State: Florida

Zip Code 32459

County: Walton

GEOSPATIAL INFORMATION

Latitude (DMS): 30° 22' 21.972" N

Longitude (DMS): 86° 6' 53.262" W

Latitude (DD): 30.37276999

Longitude (DD): -86.11479500

SITE DESCRIPTION

Site Type: Staging Area; Boat Ramp

Access: Government Owned for General Public Use

Operational Status: Open For Business

Scale of Staging Area:

Hours of Operation: 24 Hours

Days of Operation: 7 days a week

Water Type: Saltwater

Water Body Name: Choctawhatchee Bay

Boat Launch Capability: Boats Under 25 ft

Number of Boat Ramps: 1

Number of Boat Ramp Lanes: 1

Number of Boat Slips: 0

Number of Moorings: 0

Boat Ramp Surface Composition: Gravel

Water Depth at End of Boat Ramp: 0 - 2 feet

Wave Energy at Site: Low

Shoreline Type in Viewable Viscinity: Oyster

Access Constraints: No Access Constraints

Crane Capabilities: Not suitable for crane

Collection Point Capabilities:

Parking Capacity for Trailers: 8

Parking Capacity for Cars: 10

Parking Lot Dimensions:

Parking Surface: Gravel/Sand/Dirt

Capable for Light or Heavy Equipment and Type:

Boom Available On-Site and Length:

ADDITIONAL AMMENITIES

Fuels Available: No Fuel

Propane or Natural Gas Available

Water Available: No Water

Fire Hydrant:

Pumpout Available: No Pumpout

Bathrooms Available: None

Electricity Amperage Available: No Electricity Available

Camping Facilities:

Food Available: Food Available (1-5 mi.)

Security Available and Hours On Duty:

GENERAL INFORMATION AND COMMENTS

Special/Pre-Planned Events and Dates:

Comments:

Photo URL: http://ocean.floridamarine.org/waterphotos/ramp_photos/photo_id/1302/index.htm