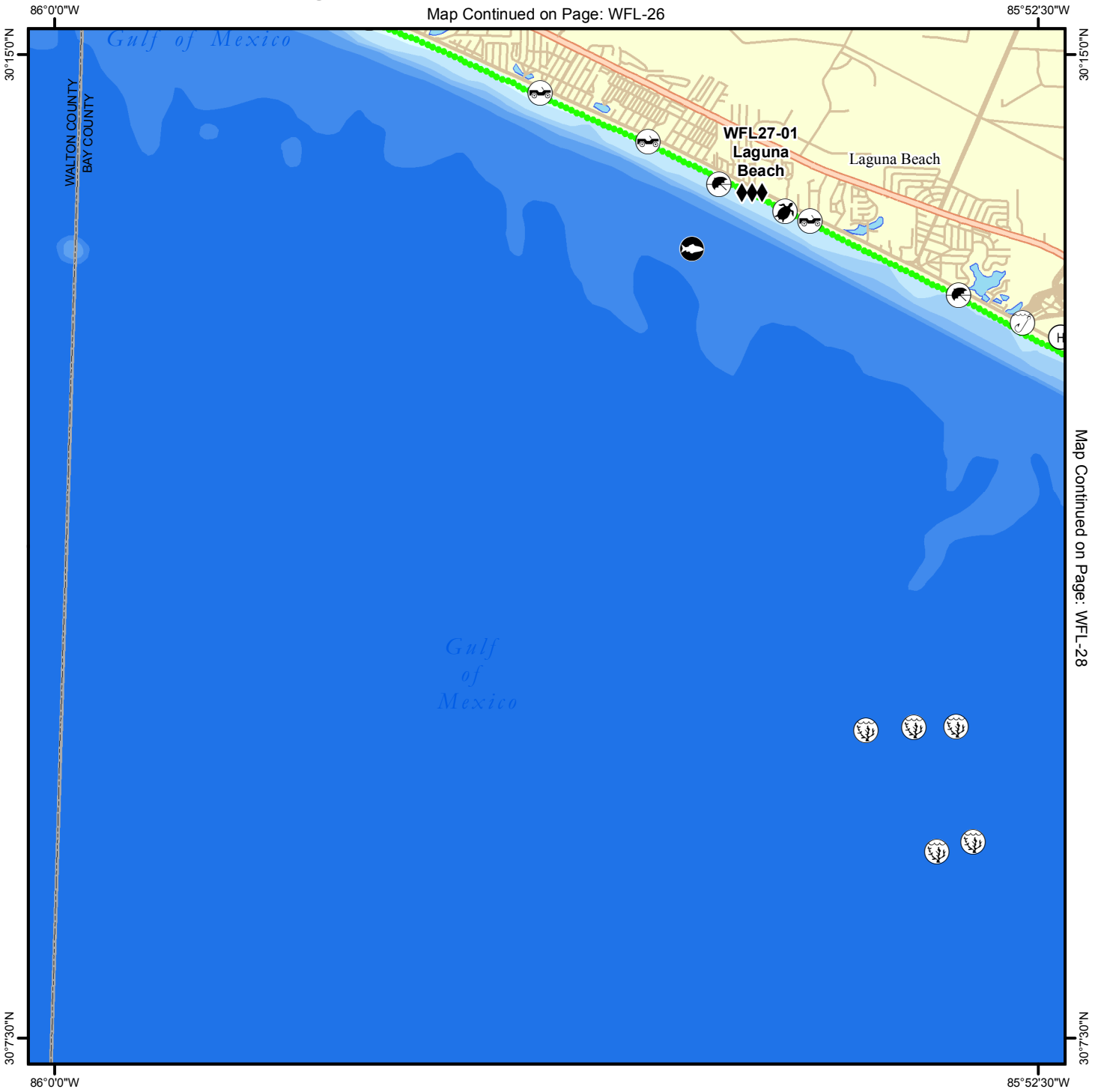


# Geographic Response Plan Map: WFL-27

Map Continued on Page: WFL-26



Map Continued on Page: WFL-28

<p><b>Environmentally Sensitive Areas</b></p> <p><b>Summer Protection Priority</b></p> <ul style="list-style-type: none"> <li>◆◆ A - Protect First</li> <li>◆◆ B - Protect after A Areas</li> <li>◆ C - Protect after B Areas</li> </ul> <p><b>Response Methods</b></p> <ul style="list-style-type: none"> <li>Y Skimmer</li> <li>☉ Shallow Water Skimmer</li> <li>▲ Collection Point</li> <li>▲ Natural Collection Points</li> <li>~ General Booming Strategy (Length in Feet)</li> <li>▣ Incident Command Posts</li> <li>Ⓢ Staging Areas</li> <li>Ⓡ Oil Spill Risk Sites</li> <li>ⓔ Equipment Storage Locations</li> <li>Ⓜ Beach or Water Access</li> </ul>	<p><b>Bio-Socioeconomic</b></p> <ul style="list-style-type: none"> <li>✈ Airport</li> <li>Ⓐ Aquaculture</li> <li>Ⓐ Aquatic Preserve/State Park</li> <li>Ⓜ Artificial Reef/Hardbottom</li> <li>Ⓜ Beach Mouse Habitat</li> <li>Ⓜ Black Bear Habitat</li> <li>Ⓜ Boat Ramp</li> <li>Ⓜ Coast Guard</li> <li>Ⓜ Diving</li> <li>Ⓜ Flatwoods Salamander</li> <li>Ⓜ Heliport</li> <li>Ⓜ High Recreational Beach</li> <li>Ⓜ Manatee</li> </ul>	<ul style="list-style-type: none"> <li>Ⓜ Marina</li> <li>Ⓜ NERR</li> <li>Ⓜ National Park</li> <li>Ⓜ Naval Base</li> <li>Ⓜ Panama City Crayfish</li> <li>⚡ Power Plant</li> <li>Ⓜ Reptile Habitat of Concern</li> <li>Ⓜ Sea Turtle Nesting</li> <li>Ⓜ Shore Bird Habitat</li> <li>Ⓜ Spring</li> <li>Ⓜ Sturgeon</li> <li>Ⓜ Water Intake</li> <li>Ⓜ Wildlife Refuge</li> </ul>	<ul style="list-style-type: none"> <li>🌿 Sea Turtle Nesting Beach</li> <li>🏠 Federal Managed Areas</li> <li>🏠 State Managed Areas</li> <li>🐚 Aquaculture/Oysters</li> <li>📏 State Waters/County Line</li> <li>🚤 USCG Sector Boundary</li> </ul>
---	--	---	---

Sector Mobile  
Area Committee

N  
S  
E  
W

Fish and Wildlife  
Research Institute

0 0.5 1 1.5 2 Miles

Sector New Orleans      Sector Mobile      Sector St. Petersburg

Name: Laguna Beach

Site ID:

WFL27-01

Protection Priority (Season): Spring:  A Summer:  A Fall:  A Winter:  B

Site Description: Sea turtle and shorebird nesting beach

## GEOSPATIAL INFORMATION

Latitude (DMS): 30° 13' 58.676"

Longitude (DMS): 85° 54' 50.798"

County: Bay

Latitude (DD): 30.232966

Longitude (DD): -85.914110

SCAT Division: Bay County Division 1

ESI Map: WFL-27

ESI Name: Laguna Beach, Fla.

NOAA Chart: 11389\_1

CHART Name: ST JOSEPH AND ST ANDREW BAYS

USGS Quad: 30085-B8

QUAD Name: Laguna Beach

Managed Area (if applicable):

General Location: Panama City Beach

## CONTACT INFORMATION

Contacts: Bay County EOC (Director) 850-784-4000; FWC Sea Turtle Nesting Monitor 850-647-8238; NRC 800-424-8802; FL State Watch Office 800-320-0519; FWC Non-Game Biologist 850-265-3676; DEP-OER 850-595-8300; D-8 Duty NOAA SSC (24hr) 206-375-5697; DOI - Regional Environmental Officer 404-331-4524 or 404-852-5414

## RESOURCES AT RISK INFORMATION

Shoreline Type: Sand Beach

Habitat: Beach Dunes, Beach Mouse Habitat

Wildlife: Choctawhatchee beach mouse, sea turtles, shorebirds, seabirds, gulls, terns, plovers, marine mammals

Threaten/Endangered Species: Least terns, black skimmer, Kemp's Ridley(E), Green(E), Loggerhead(T), Leatherback(E) Sea Turtles, Choctawhatchee beach mouse, piping plover, Manatee

Socio-Economic Resources: Tourism, recreational fishing

## RESPONSE CONSIDERATIONS

Staging Area: Beach access points and Boat Ramps (Gulf Access) via Walton County

Collection Points: On Beach

Area Access: Boat, vehicle

Spill Risk:

Response Resources:

## PROTECTION STRATEGY INFORMATION

Tidal Range (FT): 2-3

Average Current (KTS): 1-3

Ease of Protection: Easy

Min. Boom Length (FT):

Boom Type:

Booming Method:

Protection Strategy: Limit ATV use and mechanical collection on beach during nesting (shorebirds/sea turtles) season.

