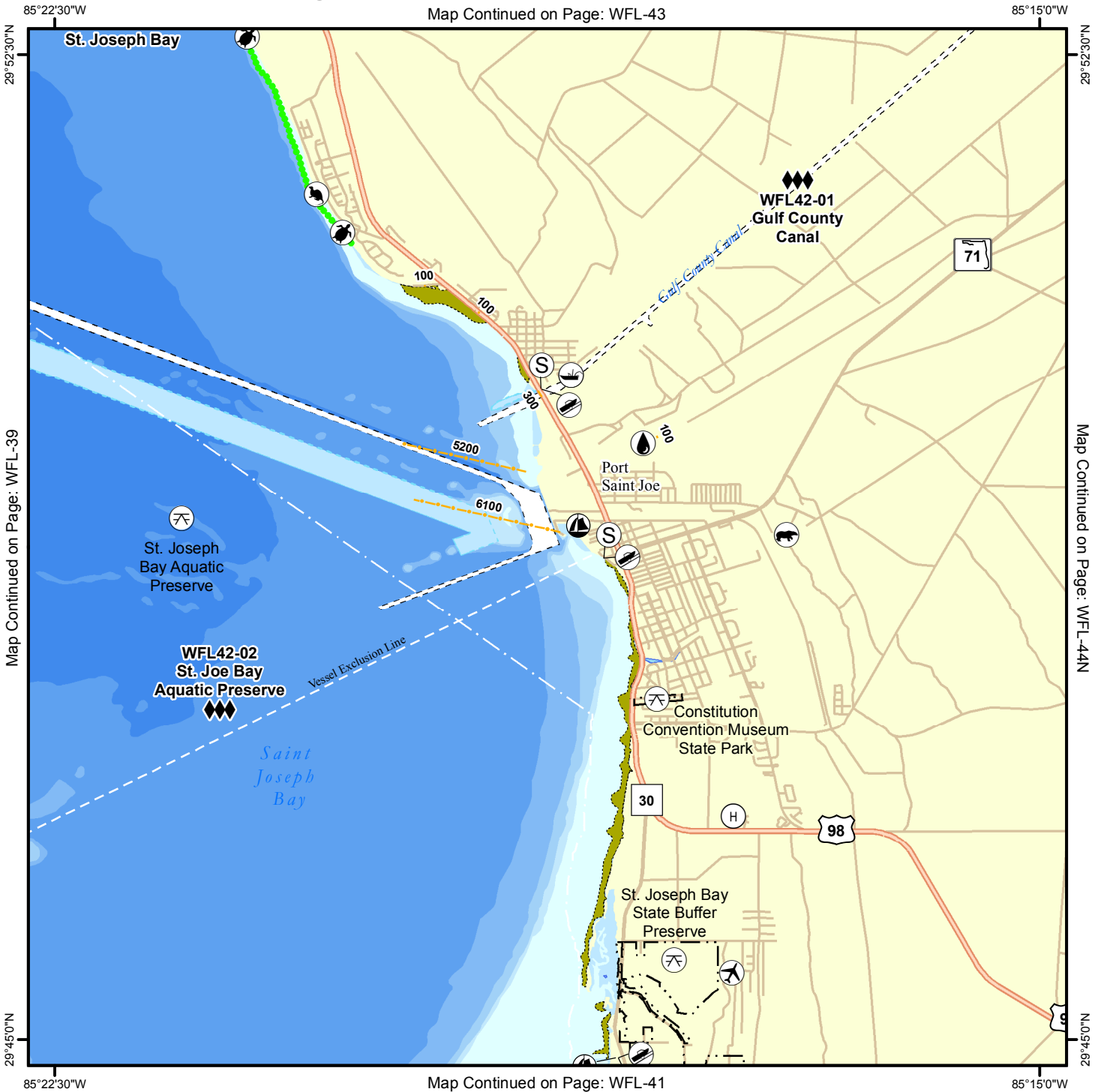


# Geographic Response Plan Map: WFL-42

Map Continued on Page: WFL-43



Map Continued on Page: WFL-41

<p><b>Environmentally Sensitive Areas</b></p> <p><b>Summer Protection Priority</b></p> <ul style="list-style-type: none"> <li>◆◆◆ A - Protect First</li> <li>◆◆ B - Protect after A Areas</li> <li>◆ C - Protect after B Areas</li> </ul> <p><b>Response Methods</b></p> <ul style="list-style-type: none"> <li>Y Skimmer</li> <li>Shallow Water Skimmer</li> <li>▲ Collection Point</li> <li>▲ Natural Collection Points</li> <li>General Booming Strategy (Length in Feet)</li> <li>Incident Command Posts</li> <li>Ⓢ Staging Areas</li> <li>Ⓡ Oil Spill Risk Sites</li> <li>ⓔ Equipment Storage Locations</li> <li>Beach or Water Access</li> </ul>	<p><b>Bio-Socioeconomic</b></p> <ul style="list-style-type: none"> <li>✈ Airport</li> <li>Ⓐ Aquaculture</li> <li>Ⓐ Aquatic Preserve/State Park</li> <li>Artificial Reef/Hardbottom</li> <li>Beach Mouse Habitat</li> <li>Black Bear Habitat</li> <li>Boat Ramp</li> <li>Coast Guard</li> <li>Diving</li> <li>Flatwoods Salamander</li> <li>Ⓜ Heliport</li> <li>High Recreational Beach</li> <li>Manatee</li> </ul>	<ul style="list-style-type: none"> <li>⚓ Marina</li> <li>Ⓝ NERR</li> <li>Ⓝ National Park</li> <li>⚓ Naval Base</li> <li>Ⓜ Panama City Crayfish</li> <li>⚡ Power Plant</li> <li>🦎 Reptile Habitat of Concern</li> <li>🐢 Sea Turtle Nesting</li> <li>🐦 Shore Bird Habitat</li> <li>Ⓞ Spring</li> <li>🐟 Sturgeon</li> <li>💧 Water Intake</li> <li>🦉 Wildlife Refuge</li> </ul>	<ul style="list-style-type: none"> <li>🌿 Sea Turtle Nesting Beach</li> <li>🏠 Federal Managed Areas</li> <li>🏠 State Managed Areas</li> <li>🐚 Aquaculture/Oysters</li> <li>🌊 State Waters/County Line</li> <li>🚢 USCG Sector Boundary</li> </ul>
--------------------------------------------------------------------------------------------------------------------------------------------------------------------------------------------------------------------------------------------------------------------------------------------------------------------------------------------------------------------------------------------------------------------------------------------------------------------------------------------------------------------------------------------------------------------------------------------------------------------------------------------------------	--------------------------------------------------------------------------------------------------------------------------------------------------------------------------------------------------------------------------------------------------------------------------------------------------------------------------------------------------------------------------------------------------------------------	-----------------------------------------------------------------------------------------------------------------------------------------------------------------------------------------------------------------------------------------------------------------------------------------------------------------------------------------------------------------------------	-------------------------------------------------------------------------------------------------------------------------------------------------------------------------------------------------------------------------------------------------

Sector Mobile Area Committee

Fish and Wildlife Research Institute

0 0.5 1 1.5 2 Miles

Sector Mobile

Name: Gulf County Canal

Site ID: WFL42-01

Protection Priority (Season): Spring:  Summer:  Fall:  Winter:

Site Description: Commercial vessel shipping channel

**GEOSPATIAL INFORMATION**

Latitude (DMS): 29° 51' 32.747" Longitude (DMS): 85° 16' 50.704" County: Gulf  
 Latitude (DD): 29.859096 Longitude (DD): -85.280751 SCAT Division: Gulf County Division 2  
 ESI Map: WFL-42 ESI Name: Port Saint Joe, Fla.  
 NOAA Chart 11389\_1 CHART Name: ST JOSEPH AND ST ANDREW BAYS  
 USGS Quad: 29085-G3 QUAD Name: Port Saint Joe

Managed Area (if applicable):

General Location: Apalachicola Division of Sector

**CONTACT INFORMATION**

Contacts: Gulf County EOC 850-229-9110; FWC Law Enforcement 850-265-3676; US Army Corps of Engineers 404-562-5155; NRC 800-424-8802; FL State Watch Office 800-320-0519; FWC Non-Game Biologist 850-265-3676; DEP-OER 850-595-8300; D-8 Duty NOAA SSC (24hr) 206-375-5697; DOI - Regional Environmental Officer 404-331-4524 or 404-852-5414

**RESOURCES AT RISK INFORMATION**

Shoreline Type: Infrastructure, sand shoreline

Habitat: Seagrass beds, scallop beds, marshes, sand beaches, hardwood hammocks.

Wildlife: Blue & Stne Crab, Pnk, Wht, & Brwn Shrimp, Oysters, Clams, Scallops, Seagrass, Bald Eagle, Egrets, Herons, Terns(T), Plovers(T), Oystercatchers, St. Andrews Bch Mouse (E), FL Blk Bear (T), Sea Turtles (Kemp's Ridley, Green, Loggerhead, Leatherback), Marine Mammal

Threaten/Endangered Species: Terns(T), Plovers(T), St. Andrews Bch Mouse (E), Kemp's Ridley(E), Green(E), Loggerhead(T), Leatherback(E)

Socio-Economic Resources: Commercial Shipping, Fishing

**RESPONSE CONSIDERATIONS**

Staging Area: Port St. Joe Boat Ramp, Persnells boat ramp, St. Joe St. park boat ramp

Collection Points: Below canal entrance at Marina and seawall

Area Access: Boat, vehicle

Spill Risk: Arizona Chemical Facility

Response Resources: St. Joe Buffer Preserve, St. Joe Fire Department

**PROTECTION STRATEGY INFORMATION**

Tidal Range (FT): 2-3 Average Current (KTS): Ease of Protection: Unknown

Min. Boom Length (FT): Boom Type: Hard Booming Method: Deflection

Protection Strategy: Place exclusion boom at mouth of canal, consider staggering and continual monitoring to allow boat access into the canal. Use deflection boom to divert oil into collection points near marina or along seawall.



Name: St. Joe Bay Aquatic Preserve

Site ID:

WFL42-02

Protection Priority (Season): Spring:  Summer:  Fall:  Winter: 

Site Description: Protected Environmental Area managed by ANERR and Scallop Habitat. Large areas of seagrass beds

## GEOSPATIAL INFORMATION

Latitude (DMS): 29° 47' 30.755"

Longitude (DMS): 85° 21' 14.710"

County: Gulf

Latitude (DD): 29.791876

Longitude (DD): -85.354086

SCAT Division: Gulf County Division 2

ESI Map: WFL-42

ESI Name: Port Saint Joe, Fla.

NOAA Chart 11389\_1

CHART Name ST JOSEPH AND ST ANDREW BAYS

USGS Quad: 29085-G3

QUAD Name: Port Saint Joe

Managed Area (if applicable): St. Joe Bay Aquaculture, St. Joe Bay buffer preserve

General Location: Apalachicola Division of Sector, Port St. Joe

## CONTACT INFORMATION

Contacts: Gulf County EOC 850-229-9110; FWC Law Enforcement 850-265-3676; Apalachicola NERR (Dir) 850-670-7700 or 850-670-4783 (Kim Wren/Mgr); St. Joseph Bay Aquatic Preserve (CAMA-Tallahassee Office) 850-245-2094; NRC 800-424-8802; FL State Watch Office 800-320-0519; FWC Non-Game Biologist 850-265-3676; DEP-OER 850-595-8300; D-8 Duty NOAA SSC (24hr) 206-375-5697; DOI - Regional Environmental Officer 404-331-4524 or 404-852-5414

## RESOURCES AT RISK INFORMATION

Shoreline Type: Marsh, beach, sandy shore.

Habitat: Seagrass beds, scallop beds, marshes, sand beaches, hardwood hammocks.

Wildlife: Blue &amp; Stne Crab, Pnk, Wht, &amp; Brwn Shrimp, Oysters, Clams, Scallops, Seagrass, Bald Eagle, Egrets, Herons, Terns(T), Plovers(T), Oystercatchers, St. Andrews Bch Mouse (E), FL Blk Bear (T), Sea Turtles, Marine Mammals

Threaten/Endangered Species: Terns(T), Plovers(T), St. Andrews Bch Mouse (E), Kemp's Ridley(E), Green(E), Loggerhead(T), Leatherback(E), Diamondback Terrapins, Manatess

Socio-Economic Resources: Commercial, Recreational boating

## RESPONSE CONSIDERATIONS

Staging Area Port St. Joe Boat Ramp, Persnells boat ramp, St. Joe St. park boat ramp

Collection Points: South of Gulf County Canal

Area Access: Boat, vehicle

Spill Risk: Port St. Joe Marina's

Response Resources: St. Joe Bay Buffer Preserve

## PROTECTION STRATEGY INFORMATION

Tidal Range (FT): 2-3

Average Current (KTS):

Ease of Protection: Hard

Min. Boom Length (FT): 5,500

Boom Type: Hard, sorbent

Booming Method: Deflection, Ensnarement

Protection Strategy: Use deflection boom to divert oil into collection points near marina or along seawall. Consider using sorbent boom (pom-pom) to collect oil in the inter-tidal zone.



Facility Name: Frank Pate City Park Boat Ramp

Site ID: GU00782LG

Data Collector (Agency): USCG

Survey Type: Planning

Survey Date: 2008-06-29 00:00

Managing Agency: City of Port St Joe

General Manager/Contact Person:

Contact Phone #:

SCAT Description: Gulf County Division 2

Physical Address: 5TH AND BALTZELL STREETS ON ST. JOSEPH BAY

City: Port St. Joe

State: Florida

Zip Code 32456

County: Gulf

## GEOSPATIAL INFORMATION

Latitude (DMS): 29° 48' 39.689" N

Longitude (DMS): 85° 18' 19.207" W

Latitude (DD): 29.81102459

Longitude (DD): -85.30533527

## SITE DESCRIPTION

Site Type: Staging Area

Access: Government Owned for General Public Use

Operational Status: Open For Business

Scale of Staging Area:

Hours of Operation: 24 Hours

Days of Operation: 7 days a week

Water Type: Saltwater

Water Body Name: Saint Joseph Bay

Boat Launch Capability: RAMP - Boats OVER 25 FT

Number of Boat Ramps: 2

Number of Boat Ramp Lanes: 4

Number of Boat Slips: 0

Number of Moorings: 5

Boat Ramp Surface Composition: Poured in place concrete

Water Depth at End of Boat Ramp: 4 - 6 feet

Wave Energy at Site: Medium

Shoreline Type in Viewable Viscinity: Seawall; Soft Sand; Rip-Rap

Access Constraints: No Access Constraints

Crane Capabilities: Not suitable for crane

Collection Point Capabilities:

Parking Capacity for Trailers: 10

Parking Capacity for Cars: 60

Parking Lot Dimensions:

Parking Surface: Gravel/Sand/Dirt

Capable for Light or Heavy Equipment and Type:

Boom Available On-Site and Length:

## ADDITIONAL AMMENITIES

Fuels Available: No Fuel

Propane or Natural Gas Available

Water Available: Yes

Fire Hydrant:

Pumpout Available: No Pumpout

Bathrooms Available: None

Electricity Amperage Available: No Electricity Available

Camping Facilities:

Food Available:

Security Available and Hours On Duty:

## GENERAL INFORMATION AND COMMENTS

Special/Pre-Planned Events and Dates:

Comments:

Photo URL: [http://ocean.floridamarine.org/waterphotos/ramp\\_photos/photo\\_id/1502/index.htm](http://ocean.floridamarine.org/waterphotos/ramp_photos/photo_id/1502/index.htm)

Facility Name: Highland View Boat Ramp (Tapper Bridge Ramp)

Site ID: GU30007DC

Data Collector (Agency): USCG

Survey Type: Planning

Survey Date: 2008-06-29 00:00

Managing Agency: Gulf County

General Manager/Contact Person:

Contact Phone #:

SCAT Description: Gulf County Division 2

Physical Address: U.S. Highway 98

City: Port St Joe

State: Florida

Zip Code 32456

County: Gulf

## GEOSPATIAL INFORMATION

Latitude (DMS): 29° 49' 56.310" N

Longitude (DMS): 85° 18' 46.740" W

Latitude (DD): 29.83230833

Longitude (DD): -85.31298333

## SITE DESCRIPTION

Site Type: Staging Area; Boat Ramp

Access: Government Owned for General Public Use

Operational Status: Open For Business

Scale of Staging Area:

Hours of Operation: 24 Hours

Days of Operation: 7 days a week

Water Type: Saltwater

Water Body Name: Saint Joseph Bay

Boat Launch Capability: Boats Under 25 ft

Number of Boat Ramps: 1

Number of Boat Ramp Lanes: 1

Number of Boat Slips: 0

Number of Moorings: 1

Boat Ramp Surface Composition: Poured in place concrete

Water Depth at End of Boat Ramp:

Wave Energy at Site: Medium

Shoreline Type in Viewable Viscinity:

Access Constraints: No Access Constraints

Crane Capabilities: Not suitable for crane

Collection Point Capabilities:

Parking Capacity for Trailers: 20

Parking Capacity for Cars: 15

Parking Lot Dimensions:

Parking Surface: Gravel/Sand/Dirt

Capable for Light or Heavy Equipment and Type:

Boom Available On-Site and Length:

## ADDITIONAL AMMENITIES

Fuels Available: No Fuel

Propane or Natural Gas Available

Water Available: Yes

Fire Hydrant:

Pumpout Available: No Pumpout

Bathrooms Available: Flush

Electricity Amperage Available:

Camping Facilities:

Food Available: Food Available (1-5 mi.)

Security Available and Hours On Duty:

## GENERAL INFORMATION AND COMMENTS

Special/Pre-Planned Events and Dates:

Comments:

Photo URL: [http://ocean.floridamarine.org/waterphotos/ramp\\_photos/photo\\_id/1504/index.htm](http://ocean.floridamarine.org/waterphotos/ramp_photos/photo_id/1504/index.htm)