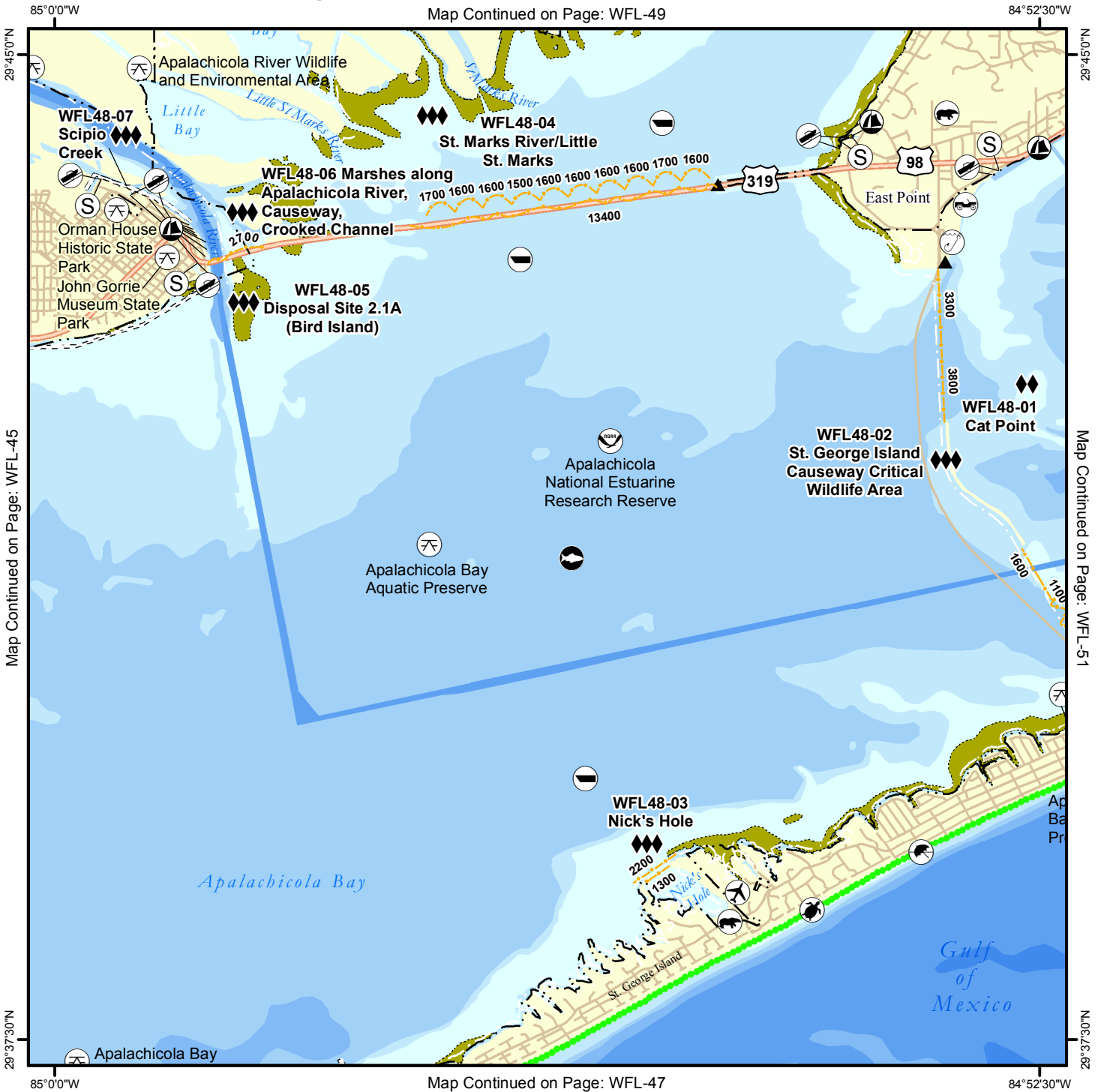


# Geographic Response Plan Map: WFL-48

Map Continued on Page: WFL-49




Map Continued on Page: WFL-45


Map Continued on Page: WFL-51


Map Continued on Page: WFL-47

<p><b>Environmentally Sensitive Areas</b></p> <p><b>Summer Protection Priority</b></p> <ul style="list-style-type: none"> <li>◆◆◆ A - Protect First</li> <li>◆◆ B - Protect after A Areas</li> <li>◆ C - Protect after B Areas</li> </ul> <p><b>Response Methods</b></p> <ul style="list-style-type: none"> <li>Y Skimmer</li> <li>☉ Shallow Water Skimmer</li> <li>▲ Collection Point</li> <li>▲ Natural Collection Points</li> <li>— General Booming Strategy (Length in Feet)</li> <li>▣ Incident Command Posts</li> <li>Ⓢ Staging Areas</li> <li>Ⓡ Oil Spill Risk Sites</li> <li>ⓔ Equipment Storage Locations</li> <li>Ⓜ Beach or Water Access</li> </ul>	<p><b>Bio-Socioeconomic</b></p> <ul style="list-style-type: none"> <li>✈ Airport</li> <li>Ⓐ Aquaculture</li> <li>Ⓐ Aquatic Preserve/State Park</li> <li>Ⓜ Artificial Reef/Hardbottom</li> <li>Ⓜ Beach Mouse Habitat</li> <li>Ⓜ Black Bear Habitat</li> <li>Ⓜ Boat Ramp</li> <li>Ⓜ Coast Guard</li> <li>Ⓜ Diving</li> <li>Ⓜ Flatwoods Salamander</li> <li>Ⓜ Heliport</li> <li>Ⓜ High Recreational Beach</li> <li>Ⓜ Manatee</li> </ul>	<ul style="list-style-type: none"> <li>Ⓜ Marina</li> <li>Ⓜ NERR</li> <li>Ⓜ National Park</li> <li>Ⓜ Naval Base</li> <li>Ⓜ Panama City Crayfish</li> <li>⚡ Power Plant</li> <li>Ⓜ Reptile Habitat of Concern</li> <li>Ⓜ Sea Turtle Nesting</li> <li>Ⓜ Shore Bird Habitat</li> <li>Ⓜ Spring</li> <li>Ⓜ Sturgeon</li> <li>Ⓜ Water Intake</li> <li>Ⓜ Wildlife Refuge</li> </ul>	<ul style="list-style-type: none"> <li>🐢 Sea Turtle Nesting Beach</li> <li>📏 Federal Managed Areas</li> <li>📏 State Managed Areas</li> <li>📏 Aquaculture/Oysters</li> <li>📏 State Waters/County Line</li> <li>📏 USCG Sector Boundary</li> </ul>
--	--	---	---




Sector Mobile  
Area Committee

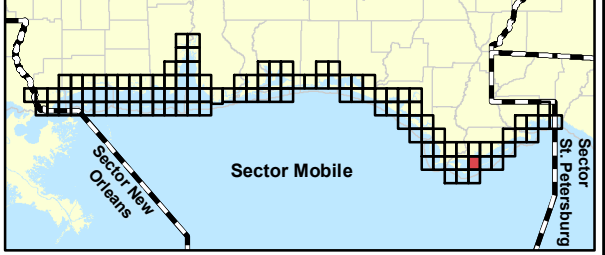




Fish and Wildlife  
Research Institute



0 0.5 1 1.5 2 Miles



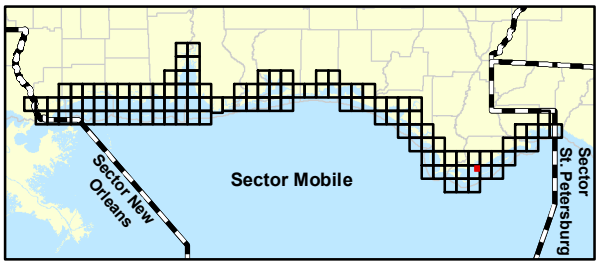
Sector New Orleans      Sector Mobile      Sector St. Petersburg

# Geographic Response Plan Map: WFL-48NE

Map Continued on Page: WFL-49SE

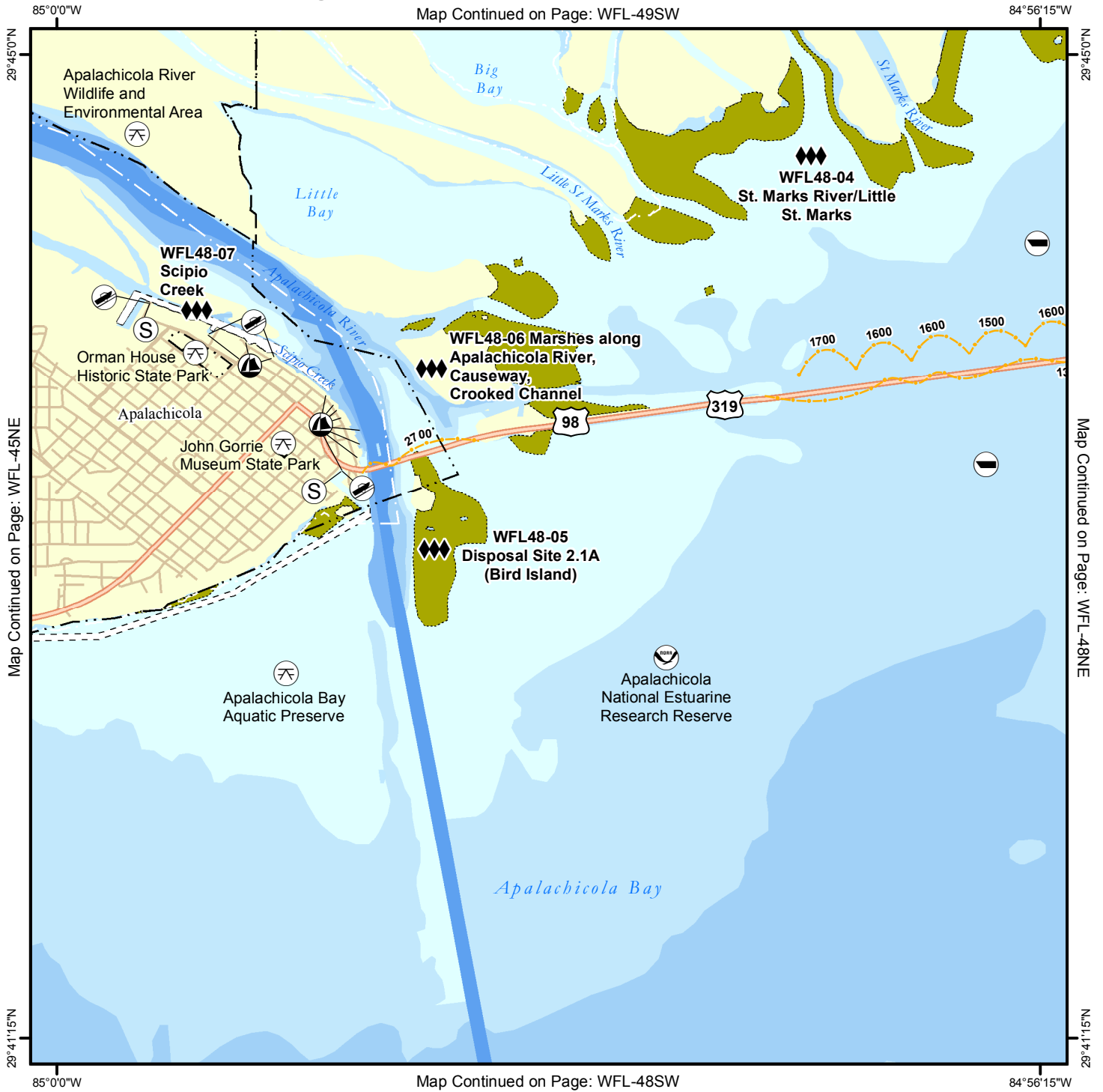


<p><b>Environmentally Sensitive Areas</b></p> <p><b>Summer Protection Priority</b></p> <ul style="list-style-type: none"> <li>◆◆ A - Protect First</li> <li>◆◆ B - Protect after A Areas</li> <li>◆ C - Protect after B Areas</li> </ul> <p><b>Response Methods</b></p> <ul style="list-style-type: none"> <li>Y Skimmer</li> <li>☉ Shallow Water Skimmer</li> <li>▲ Collection Point</li> <li>▲ Natural Collection Points</li> <li>~ General Booming Strategy (Length in Feet)</li> <li>▣ Incident Command Posts</li> <li>Ⓢ Staging Areas</li> <li>Ⓡ Oil Spill Risk Sites</li> <li>ⓔ Equipment Storage Locations</li> <li>Ⓜ Beach or Water Access Locations</li> </ul>	<p><b>Bio-Socioeconomic</b></p> <ul style="list-style-type: none"> <li>✈ Airport</li> <li>🐟 Aquaculture</li> <li>Ⓜ Aquatic Preserve/State Park</li> <li>🌿 Artificial Reef/Hardbottom</li> <li>🐭 Beach Mouse Habitat</li> <li>🐻 Black Bear Habitat</li> <li>🚤 Boat Ramp</li> <li>🚢 Coast Guard</li> <li>🤿 Diving</li> <li>🦎 Flatwoods Salamander</li> <li>🚁 Helicopter</li> <li>🏖 High Recreational Beach</li> <li>🐠 Manatee</li> </ul>	<ul style="list-style-type: none"> <li>⚓ Marina</li> <li>🏠 NERR</li> <li>🌳 National Park</li> <li>⚓ Naval Base</li> <li>👤 Panama City Crayfish</li> <li>⚡ Power Plant</li> <li>🦎 Reptile Habitat of Concern</li> <li>🐢 Sea Turtle Nesting</li> <li>🐦 Shore Bird Habitat</li> <li>🌊 Spring</li> <li>🐟 Sturgeon</li> <li>💧 Water Intake</li> <li>🦋 Wildlife Refuge</li> </ul>	<ul style="list-style-type: none"> <li>🐢 Sea Turtle Nesting Beach</li> <li>🏠 Federal Managed Areas</li> <li>🏠 State Managed Areas</li> <li>🐚 Aquaculture/Oyster</li> <li>📏 State Waters/County Line</li> <li>🚤 USCG Sector Boundary</li> </ul>	<p>Sector Mobile Area Committee</p> <p>Fish and Wildlife Research Institute</p> <p>0 0.25 0.5 0.75 1 Miles</p>
---	--	---	--	--



# Geographic Response Plan Map: WFL-48NW

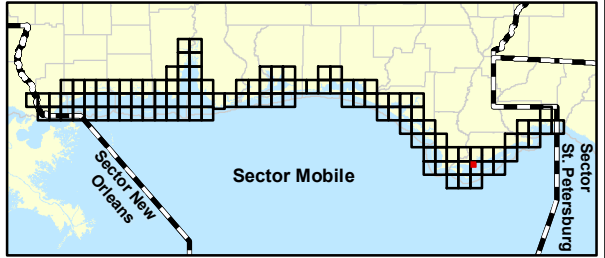
Map Continued on Page: WFL-49SW



Map Continued on Page: WFL-48NE

Map Continued on Page: WFL-48SW

<p><b>Environmentally Sensitive Areas</b></p> <p><b>Summer Protection Priority</b></p> <ul style="list-style-type: none"> <li>◆◆◆ A - Protect First</li> <li>◆◆ B - Protect after A Areas</li> <li>◆ C - Protect after B Areas</li> </ul> <p><b>Response Methods</b></p> <ul style="list-style-type: none"> <li>Y Skimmer</li> <li>○ Shallow Water Skimmer</li> <li>▲ Collection Point</li> <li>▲ Natural Collection Points</li> <li>~ General Booming Strategy (Length in Feet)</li> <li>■ Incident Command Posts</li> <li>○ Staging Areas</li> <li>○ Oil Spill Risk Sites</li> <li>○ Equipment Storage Locations</li> <li>○ Beach or Water Access Locations</li> </ul>	<p><b>Bio-Socioeconomic</b></p> <ul style="list-style-type: none"> <li>○ Airport</li> <li>○ Aquaculture</li> <li>○ Aquatic Preserve/State Park</li> <li>○ Artificial Reef/Hardbottom</li> <li>○ Beach Mouse Habitat</li> <li>○ Black Bear Habitat</li> <li>○ Boat Ramp</li> <li>○ Coast Guard</li> <li>○ Diving</li> <li>○ Flatwoods Salamander</li> <li>○ Heliport</li> <li>○ High Recreational Beach</li> <li>○ Manatee</li> </ul>	<ul style="list-style-type: none"> <li>○ Marina</li> <li>○ NERR</li> <li>○ National Park</li> <li>○ Naval Base</li> <li>○ Panama City Crayfish</li> <li>○ Power Plant</li> <li>○ Reptile Habitat of Concern</li> <li>○ Sea Turtle Nesting</li> <li>○ Shore Bird Habitat</li> <li>○ Spring</li> <li>○ Sturgeon</li> <li>○ Water Intake</li> <li>○ Wildlife Refuge</li> </ul>	<ul style="list-style-type: none"> <li>○ Sea Turtle Nesting Beach</li> <li>○ Federal Managed Areas</li> <li>○ State Managed Areas</li> <li>○ Aquaculture/Oyster</li> <li>○ State Waters/County Line</li> <li>○ USCG Sector Boundary</li> </ul>	<p>Sector Mobile Area Committee</p> <p>Fish and Wildlife Research Institute</p> <p>0 0.25 0.5 0.75 1 Miles</p>
--	--	---	--	--



Name: Cat Point

Site ID:

WFL48-01

Protection Priority (Season): Spring:  Summer:  Fall:  Winter: 

Site Description: Oyster bars east of old SGI causeway

## GEOSPATIAL INFORMATION

Latitude (DMS): 29° 42' 29.262"

Longitude (DMS): 84° 52' 35.728"

County: Franklin

Latitude (DD): 29.708128

Longitude (DD): -84.876591

SCAT Division: Franklin County Division 2

ESI Map: WFL-48

ESI Name: Apalachicola, Fla.

NOAA Chart: 11401\_1

CHART Name: APALACHICOLA BAY TO CAPE SAN BLAS

USGS Quad: 29084-F8

QUAD Name: Apalachicola

Managed Area (if applicable): FDACS shellfish lab- Joe Shields- 850-653-4735

General Location: Apalachicola Division of Sector

## CONTACT INFORMATION

**Contacts:** Franklin County EOC 850-653-8977; FWC Law Enforcement 850-697-2298 or 850-251-7247 (cell); Apalachicola NERR (Director) 850-670-7700; FDACS-Division of Aquaculture (Shellfish Lab) 850-653-4735; NRC 800-424-8802; FL State Watch Office 800-320-0519; FWC Non-Game Biologist 850-265-3676; DEP-OER 850-245-2873; D-8 Duty NOAA SSC (24hr) 206-375-5697; DOI - Regional Environmental Officer 404-331-4524 or 404-852-5414

## RESOURCES AT RISK INFORMATION

**Shoreline Type:** Exposed tidal flats, Exposed, solid man-made structures, Fine-medium grained sand beaches, Riprap, Salt/brackish-water marshes, Sheltered man-made structures

**Habitat:** Oyster bars

**Wildlife:** Blue & Stne Crab, Pnk, Wht, & Brwn Shrimp, Oysters, Bald Eagle, Egrets, Herons, Terns(T), Plovers(T), Oystercatchers, Sea Turtles, marine mammals, Bivalves, Black skimmer, cephalopod, crabs, diving birds, dolphin, gulls/terns, Osprey, oyster, pelican, waterfowl, fishes

**Threaten/Endangered Species:** Gulf sturgeon, Sea Turtles (Green, Hawksbill, Kemp's ridley, Leatherback, Loggerhead), Smalltooth sawfish, West Indian Manatee

**Socio-Economic Resources:** Oyster harvesting (commercial)

## RESPONSE CONSIDERATIONS

**Staging Area:** Battery Park (10 ft hole), Franklin County Eastpoint Public ramp, Old Ferry Dock

**Collection Points:** Old Ferry landing (Cat Point)

**Area Access:** Boat, Vehicle (Landside)

**Spill Risk:**

**Response Resources:** FWC LE (Eastpoint), Sea Tow (Apalachicola)

## PROTECTION STRATEGY INFORMATION

**Tidal Range (FT):** 2-3

**Average Current (KTS):**

**Ease of Protection:** Unknown

**Min. Boom Length (FT):** 9,000

**Boom Type:** Hard

**Booming Method:** Protection/Exclusion

**Protection Strategy:** Place protection/exclusion (9,000 ft) boom along causeway, and relic bridge.



Name: St. George Island Causeway Critical Wildlife Area

Site ID:

WFL48-02

Protection Priority (Season): Spring:  Summer:  Fall:  Winter: 

Site Description: Seawall around spoil island, some beach

## GEOSPATIAL INFORMATION

Latitude (DMS): 29° 41' 54.681"

Longitude (DMS): 84° 53' 12.955"

County: Franklin

Latitude (DD): 29.698522

Longitude (DD): -84.886932

SCAT Division: Franklin County Division 2

ESI Map: WFL-48

ESI Name: Apalachicola, Fla.

NOAA Chart: 11401\_1

CHART Name: APALACHICOLA BAY TO CAPE SAN BLAS

USGS Quad: 29084-F8

QUAD Name: Apalachicola

Managed Area (if applicable): St George Island Causeway Critical Wildlife Area

General Location: Apalachicola Division of Sector

## CONTACT INFORMATION

**Contacts:** Franklin County EOC 850-653-8977; FWC Law Enforcement 850-697-2298 or 850-251-7247 (cell); Apalachicola NERR (Director) 850-670-7700; FWC Non-Game Species Coordinator (Panama City) 850-697-3764; NRC 800-424-8802; FL State Watch Office 800-320-0519; FWC Non-Game Biologist 850-265-3676; DEP-OER 850-245-2873; D-8 Duty NOAA SSC (24hr) 206-375-5697; DOI - Regional Environmental Officer 404-331-4524 or 404-852-5414

## RESOURCES AT RISK INFORMATION

**Shoreline Type:** Rock, seawall, and sandy beach**Habitat:** Large bird nesting area for listed multiple species**Wildlife:** Blue & Stne Crab, Pnk, Wht, & Brwn Shrimp, Oysters, Clams, Scallops, Bald Eagle, Egrets, Herons, Terns(T), Plovers(T), Oystercatchers, FL Blk Bear (T), Gulls, Black Skimmer, possible Gulf Sturgeon (T)**Threaten/Endangered Species:** Bld Eagle(T), Terns(T), Plovers(T)**Socio-Economic Resources:**

## RESPONSE CONSIDERATIONS

**Staging Area** Eastpoint public ramp, Old Ferry Dock, Battery Park 10 foot hole.**Collection Points:****Area Access:** Boat only**Spill Risk:****Response Resources:** FWC LE (Eastpoint), Sea Tow (Apalachicola)

## PROTECTION STRATEGY INFORMATION

**Tidal Range (FT):** 2-3**Average Current (KTS):****Ease of Protection:** Medium**Min. Boom Length (FT):** 17,000**Boom Type:** Hard**Booming Method:** Protection/Exclusion**Protection Strategy:** Lace 17,000 feet of protect/exclusion boom around bridge columns. Protect beach area (NE corner) for bird loafing. Consider shallow water skimmer to collect oil on water. Place additional sorbent boom behind protection boom if current causes entrainment.

Name: Nick's Hole

Site ID:

WFL48-03

Protection Priority (Season): Spring:  Summer:  Fall:  Winter: 

Site Description: Embayment on North side of St. George Island

## GEOSPATIAL INFORMATION

Latitude (DMS): 29° 38' 59.489"

Longitude (DMS): 84° 55' 29.522"

County: Franklin

Latitude (DD): 29.649858

Longitude (DD): -84.924867

SCAT Division: Franklin County Division 2

ESI Map: WFL-48

ESI Name: Apalachicola, Fla.

NOAA Chart 11401\_1

CHART Name APALACHICOLA BAY TO CAPE SAN BLAS

USGS Quad: 29084-F8

QUAD Name: Apalachicola

Managed Area (if applicable): Apalachicola National Estuarine Research Reserve

General Location: Apalachicola Division of Sector

## CONTACT INFORMATION

**Contacts:** Franklin County EOC 850-653-8977; FWC Law Enforcement 850-697-2298 or 850-251-7247 (cell); Apalachicola NERR (Manager) 850-670-7700; SGI Plantation Security Office 850-927-2312; NRC 800-424-8802; FL State Watch Office 800-320-0519; FWC Non-Game Biologist 850-265-3676; DEP-OER 850-245-2873; D-8 Duty NOAA SSC (24hr) 206-375-5697; DOI - Regional Environmental Officer 404-331-4524 or 404-852-5414

## RESOURCES AT RISK INFORMATION

Shoreline Type: Marsh, sandy beach

Habitat: Marshes, oyster bars, tidal flats, seagrass

**Wildlife:** Blue & Stne Crab, Pnk, Wht, & Brwn Shrimp, Oysters, Clams, Seagrass, Bald Eagle, Egrets, Herons, Terns(T), Plovers(T), Oystercatchers, FL Blk Bear (T), Kemp's Ridley(E), Green(E), Loggerhead(T), Leatherback(E) Sea Turtles, fishes, possible Gulf Sturgeon (T)

**Threaten/Endangered Species:** Terns(T), Plovers(T), Gulf Sturgeon (T), Sea Turtles (Kemp's Ridley, Green, Loggerhead, Leatherback), Manatee (T)

Socio-Economic Resources:

## RESPONSE CONSIDERATIONS

Staging Area SGI East ramp (maybe), Battery Park (10 ft hole)

Collection Points:

Area Access: Boat, vehicle

Spill Risk:

Response Resources: MAX CURRENT &lt; 1 knot

## PROTECTION STRATEGY INFORMATION

Tidal Range (FT): 2-3

Average Current (KTS):

Ease of Protection: Unknown

Min. Boom Length (FT): 1,300

Boom Type: Hard, sorbent

Booming Method: Deflection, Protection/Exclusion

Protection Strategy: Keep oil out of Nicks Hole!



**Name:** St. Marks River/Little St. Marks

**Site ID:** WFL48-04

**Protection Priority (Season):** Spring:  Summer:  Fall:  Winter:

**Site Description:** Distributary of Apalachicola River

**GEOSPATIAL INFORMATION**

**Latitude (DMS):** 29° 44' 40.761" **Longitude (DMS):** 84° 56' 37.674" **County:** Franklin  
**Latitude (DD):** 29.744656 **Longitude (DD):** -84.943798 **SCAT Division:** Franklin County Division 2  
**ESI Map:** WFL-48 **ESI Name:** Apalachicola, Fla.  
**NOAA Chart:** 11401\_1 **CHART Name:** APALACHICOLA BAY TO CAPE SAN BLAS  
**USGS Quad:** 29084-F8 **QUAD Name:** Apalachicola

**Managed Area (if applicable):** Apalachicola River, WEA, ANERR

**General Location:** Apalachicola Division of Sector

**CONTACT INFORMATION**

**Contacts:** Franklin County EOC 850-653-8977; FWC Law Enforcement 850-697-2298 or 850-251-7247 (cell); Apalachicola NERR (Director) 850-670-7700; FWC Law Enforcement (Carrabelle) 850-697-3764; ARWEA Mgr 850-827-2349 or 850-827-2413; NRC 800-424-8802; FL State Watch Office 800-320-0519; FWC Non-Game Biologist 850-265-3676; DEP-OER 850-245-2873; D-8 Duty NOAA SSC (24hr) 206-375-5697; DOI - Regional Environmental Officer 404-331-4524 or 404-852-5414

**RESOURCES AT RISK INFORMATION**

**Shoreline Type:** Tidal mud flats, Brackish Marsh

**Habitat:** Submerged aquatic vegetation, brackish marsh

**Wildlife:** Blue Crab, Pnk, Wht, & Brwn Shrimp, Oysters, Bald Eagle, Egrets, Herons, Terns(T), Plovers(T), Oystercatchers, Marine Mammals, Juvenile fish, possible Gulf Sturgeon (T)

**Threaten/Endangered Species:** Terns(T), Plovers(T), Gulf Sturgeon (T), Manatee (T)

**Socio-Economic Resources:** Commercial crabbing, recreational fishing

**RESPONSE CONSIDERATIONS**

**Staging Area:** Battery Park (10 ft hole), Old Ferry Dock Road, Gardner's Landing  
**Collection Points:** St Marks River at East River Cutoff, Chipley Creek or John Gorrie Bridge  
**Area Access:** Boat only  
**Spill Risk:** J.V. Gander, Water Street Marine  
**Response Resources:** FWC LE (Eastpoint), Sea Tow (Apalachicola)

**PROTECTION STRATEGY INFORMATION**

**Tidal Range (FT):** 3 **Average Current (KTS):** 1 **Ease of Protection:** Hard  
**Min. Boom Length (FT):** 13,000 **Boom Type:** **Booming Method:** Containment, Protection/Exclusion

**Protection Strategy:** Keep spill out of marshes in St. Marks River. Shallow water less than 2 feet. Additionally use cascading boom behind bridge to collect oil at power line columns.



**Name:** Disposal Site 2.1A (Bird Island)

**Site ID:**

**WFL48-05**

**Protection Priority (Season):** Spring:  A Summer:  A Fall:  B Winter:  B

**Site Description:** Dredge spoil island South of high hump Apalachicola Bridge

**GEOSPATIAL INFORMATION**

**Latitude (DMS):** 29° 43' 6.878" N

**Longitude (DMS):** 84° 58' 33.659"

**County:** Franklin

**Latitude (DD):** 29.718577

**Longitude (DD):** -84.976016

**SCAT Division:** Franklin County Division 2

**ESI Map:** WFL-48

**ESI Name:** Apalachicola, Fla.

**NOAA Chart:** 11401\_1

**CHART Name:** APALACHICOLA BAY TO CAPE SAN BLAS

**USGS Quad:** 29084-F8

**QUAD Name:** Apalachicola

**Managed Area (if applicable):** Apalachicola Bay Aquatic Preserve

**General Location:** Dredge spoil island south of John Gorrie bridge

**CONTACT INFORMATION**

**Contacts:** Franklin County EOC 850-653-8977; FWC Law Enforcement 850-697-2298 or 850-251-7247 (cell); Apalachicola NERR (Director) 850-670-7700; FWC Non-Game Species Coordinator (Panama City) 850-697-3764; NRC 800-424-8802; FL State Watch Office 800-320-0519; FWC Non-Game Biologist 850-265-3676; DEP-OER 850-245-2873; D-8 Duty NOAA SSC (24hr) 206-375-5697; DOI - Regional Environmental Officer 404-331-4524 or 404-852-5414

**RESOURCES AT RISK INFORMATION**

**Shoreline Type:** Sand, Shell, Marsh

**Habitat:** Sand and shrub

**Wildlife:** Eastern brown pelican, terns, black skimmers, oyster catchers, gulls, willet, rails, shorebirds, white pelican

**Threaten/Endangered Species:** Least terns, black skimmers, American Oyster catchers, eastern brown pelican.

**Socio-Economic Resources:**

**RESPONSE CONSIDERATIONS**

**Staging Area:** Battery Park 10 foot Hole

**Collection Points:**

**Area Access:** Boat Only

**Spill Risk:** Apalachicola Marina's as oil storage

**Response Resources:**

**PROTECTION STRATEGY INFORMATION**

**Tidal Range (FT):** 2-3

**Average Current (KTS):** 2-3

**Ease of Protection:** Medium

**Min. Boom Length (FT):**

**Boom Type:** Hard

**Booming Method:** Protection/Exclusion

**Protection Strategy:** Encircle island with exclusion boom.





**Name:** Marshes along Apalachicola River, Causeway, Crooked Channel

**Site ID:** WFL48-06

**Protection Priority (Season):** Spring:  Summer:  Fall:  Winter:

**Site Description:** Brackish marsh along shoreline and marsh on Crooked Channel

**GEOSPATIAL INFORMATION**

**Latitude (DMS):** 29° 43' 35.763" **Longitude (DMS):** 84° 58' 38.676" **County:** Franklin  
**Latitude (DD):** 29.726601 **Longitude (DD):** -84.977410 **SCAT Division:** Franklin County Division 2  
**ESI Map:** WFL-48 **ESI Name:** Apalachicola, Fla.  
**NOAA Chart:** 11401\_1 **CHART Name:** APALACHICOLA BAY TO CAPE SAN BLAS  
**USGS Quad:** 29084-F8 **QUAD Name:** Apalachicola

**Managed Area (if applicable):** ANERR, Apalachicola Aquaculture Leases (FDACS)

**General Location:** Apalachicola Division of Sector

**CONTACT INFORMATION**

**Contacts:** Franklin County EOC 850-653-8977; FWC Law Enforcement 850-697-2298 or 850-251-7247 (cell) or (Carrabelle) 850-697-3764; Apalachicola NERR (Director) 850-670-7700; City of Apalachicola (City Administrator) 850-653-9319; NRC 800-424-8802; FL State Watch Office 800-320-0519; FWC Non-Game Biologist 850-265-3676; DEP-OER 850-245-2873; D-8 Duty NOAA SSC (24hr) 206-375-5697; DOI - Regional Environmental Officer 404-331-4524 or 404-852-5414

**RESOURCES AT RISK INFORMATION**

**Shoreline Type:** Brackish Marshes, SAV

**Habitat:** Marshes, Submerged Aquatic Vegetation (SAV)

**Wildlife:** Blue Crab, Pnk, Wht, & Brwn Shrimp, Bald Eagle, Egrets, Herons, Terns(T), Plovers(T), Oystercatchers, Alligator, Manatee, fishes, possible Gulf Sturgeon (T)

**Threaten/Endangered Species:** Terns(T), Plovers(T), Gulf Sturgeon (T), Manatee (T)

**Socio-Economic Resources:** Tourism, recreational and commercial fishing, docks

**RESPONSE CONSIDERATIONS**

**Staging Area:** Battery Park (10 ft hole), Mill Pond

**Collection Points:** Along bridge inlets and shallow water skimmers north and south of bridge.

**Area Access:** Vehicle, boat

**Spill Risk:** J.V. Gander/Water Street Marine

**Response Resources:** MAX CURRENT: <1.5

**PROTECTION STRATEGY INFORMATION**

**Tidal Range (FT):** 2-3 **Average Current (KTS):** **Ease of Protection:** Medium  
**Min. Boom Length (FT):** 2,500 **Boom Type:** **Booming Method:** Protection/Exclusion  
**Protection Strategy:** Line 2,500' of protection/exclusion boom along bridge columns. Potential spill source from diesel tanks along Apalachicola River.



**Name:** Scipio Creek

**Site ID:**

**WFL48-07**

**Protection Priority (Season):** Spring:  Summer:  Fall:  Winter:

**Site Description:**

**GEOSPATIAL INFORMATION**

**Latitude (DMS):** 29° 43' 58.762"

**Longitude (DMS):** 84° 59' 19.677"

**County:** Franklin

**Latitude (DD):** 29.732990

**Longitude (DD):** -84.988799

**SCAT Division:** Franklin County Division 2

**ESI Map:** WFL-48

**ESI Name:** Apalachicola, Fla.

**NOAA Chart:** 11401\_1

**CHART Name:** APALACHICOLA BAY TO CAPE SAN BLAS

**USGS Quad:** 29084-F8

**QUAD Name:** Apalachicola

**Managed Area (if applicable):**

**General Location:** Apalachicola Division of Sector

**CONTACT INFORMATION**

**Contacts:** Franklin County EOC 850-653-8977; FWC Law Enforcement 850-697-2298 or 850-251-7247 (cell) or (Carrabelle) 850-697-3764; Apalachicola NERR (Director) 850-670-7700; City of Apalachicola (City Administrator) 850-653-9319; FL State Watch Office 800-320-0519; FWC Non-Game Biologist 850-265-3676; DEP-OER 850-245-2873; D-8 Duty NOAA SSC (24hr) 206-375-5697; DOI - Regional Environmental Officer 404-331-4524 or 404-852-5414

**RESOURCES AT RISK INFORMATION**

**Shoreline Type:** Marsh, infrastructure

**Habitat:** Marsh, submerged vegetation

**Wildlife:** Blue Crab, Pnk, Wht, & Brwn Shrimp, Oysters, Clams, Seagrass, Bald Eagle, Egrets, Herons, Terns(T), Plovers(T), Oystercatchers, Kemp's Ridley(E), Green(E), Loggerhead(T), Leatherback(E) Sea Turtles, Manatee, fishes, possible Gulf Sturgeon (T)

**Threaten/Endangered Species:** Bld Eagle(T), Terns(T), Plovers(T), Gulf Sturgeon (T), FL Blk Bear(T), Sea Turtles (Kemp's Ridley, Green, Loggerhead, Leatherback), Manatee (T)

**Socio-Economic Resources:**

**RESPONSE CONSIDERATIONS**

**Staging Area:** Battery Park (10 ft hole), Mill Pond Boat Ramp.

**Collection Points:**

**Area Access:** Vehicle, boat

**Spill Risk:** Gander's, Miller Marine, barge traffic

**Response Resources:**

**PROTECTION STRATEGY INFORMATION**

**Tidal Range (FT):** 2.3

**Average Current (KTS):**

**Ease of Protection:** Unknown

**Min. Boom Length (FT):** 350

**Boom Type:** Hard

**Booming Method:** Deflection, Protection/Exclusion

**Protection Strategy:** Keep spill out of river or out of creek (depending on spill location).



Facility Name: Scipio Creek Marina

Site ID: FR00083VT

Data Collector (Agency): State of Florida

Survey Type: Planning

Survey Date: 2008-04-08 00:00

Managing Agency: CITY OF APALACOLA

General Manager/Contact Person:

Contact Phone #:

SCAT Description: Franklin County Division 2

Physical Address: 479 Market St.

City: Apalachicola

State: Florida

Zip Code 32320

County: Franklin

## GEOSPATIAL INFORMATION

Latitude (DMS): 29° 44' 3.138" N

Longitude (DMS): 84° 59' 39.252" W

Latitude (DD): 29.73420499

Longitude (DD): -84.99423666

## SITE DESCRIPTION

Site Type: Staging Area; Boat Ramp; Marina

Access: Public

Operational Status: Open for Business

Scale of Staging Area:

Hours of Operation: 24 hours

Days of Operation: 24/7

Water Type: Brackish

Water Body Name: Scipio Creek

Boat Launch Capability: RAMP - Boats OVER 25 FT

Number of Boat Ramps: 1

Number of Boat Ramp Lanes: 1

Number of Boat Slips: 50

Number of Moorings: 0

Boat Ramp Surface Composition: Cement or Asphalt

Water Depth at End of Boat Ramp: 6 - 8 feet

Wave Energy at Site: Medium

Shoreline Type in Viewable Viscinity: Seawall; Soft Stem Veg.

Access Constraints: No Access Constraints

Crane Capabilities: Suitable for large crane

Collection Point Capabilities:

Parking Capacity for Trailers: 20

Parking Capacity for Cars: 0

Parking Lot Dimensions:

Parking Surface: Dirt/Gravel; Grass

Capable for Light or Heavy Equipment and Type:

Boom Available On-Site and Length:

## ADDITIONAL AMMENITIES

Fuels Available: No Fuel

Propane or Natural Gas Available

Water Available: Yes

Fire Hydrant:

Pumpout Available: Pumpout Available

Bathrooms Available: Restroom Facilities

Electricity Amperage Available: 30 Amp Hookup; 50 Amp H

Camping Facilities:

Food Available: Food Available (1-5 mi.)

Security Available and Hours On Duty:

## GENERAL INFORMATION AND COMMENTS

Special/Pre-Planned Events and Dates:

Comments:

Photo URL: [http://ocean.floridamarine.org/waterphotos/ramp\\_photos/photo\\_id/1603/index.htm](http://ocean.floridamarine.org/waterphotos/ramp_photos/photo_id/1603/index.htm)

Facility Name: Old Ferry Dock Road

Site ID: FR00030LQ

Data Collector (Agency): State of Florida

Survey Type: Planning

Survey Date: 2008-04-01 00:00

Managing Agency: Franklin County

General Manager/Contact Person:

Contact Phone #:

SCAT Description: Franklin County Division 2

Physical Address: Old Ferry Dock Road

City: Eastpoint

State: Florida

Zip Code 32328

County: Franklin

## GEOSPATIAL INFORMATION

Latitude (DMS): 29° 44' 19.746" N

Longitude (DMS): 84° 54' 1.080" W

Latitude (DD): 29.73881833

Longitude (DD): -84.90030000

## SITE DESCRIPTION

Site Type: Boat Ramp

Access: Government Owned for General Public Use

Operational Status: Open For Business

Scale of Staging Area:

Hours of Operation: 24 Hours

Days of Operation: 24/7

Water Type: Brackish

Water Body Name: East Bay - Apalachicola Bay

Boat Launch Capability: Boats Under 25 ft

Number of Boat Ramps: 1

Number of Boat Ramp Lanes: 1

Number of Boat Slips: 0

Number of Moorings: 0

Boat Ramp Surface Composition: Poured in place concrete

Water Depth at End of Boat Ramp: 2 - 4 feet

Wave Energy at Site: Low

Shoreline Type in Viewable Viscinity: Seawall; Soft Stem Veg.

Access Constraints: Other Difficulty

Crane Capabilities: Not suitable for crane

Collection Point Capabilities:

Parking Capacity for Trailers: 4

Parking Capacity for Cars: 0

Parking Lot Dimensions:

Parking Surface: Multiple Surfaces

Capable for Light or Heavy Equipment and Type:

Boom Available On-Site and Length:

## ADDITIONAL AMMENITIES

Fuels Available: No Fuel

Propane or Natural Gas Available

Water Available: No Water

Fire Hydrant:

Pumpout Available: No Pumpout

Bathrooms Available: None

Electricity Amperage Available: No Electricity Available

Camping Facilities:

Food Available: Food Available (1-5 mi.)

Security Available and Hours On Duty:

## GENERAL INFORMATION AND COMMENTS

Special/Pre-Planned Events and Dates:

Comments: 03/22/2012 10:21 AM---Bill.Sargent-----This ramp better suited for small boats. The adjacent North Bayshore Drive ramp (around the corner) is better suited for larger boats.

Photo URL: [http://ocean.floridamarine.org/waterphotos/ramp\\_photos/photo\\_id/1609/index.htm](http://ocean.floridamarine.org/waterphotos/ramp_photos/photo_id/1609/index.htm)

Facility Name: Franklin County Indian Creek Public Park

Site ID: FR00066IZ

Data Collector (Agency): State of Florida

Survey Type: Planning

Survey Date: 2008-04-01 00:00

Managing Agency: Franklin County

General Manager/Contact Person:

Contact Phone #:

SCAT Description: Franklin County Division 2

Physical Address: North Bayshore Drive

City: Eastpoint

State: Florida

Zip Code 32328

County: Franklin

## GEOSPATIAL INFORMATION

Latitude (DMS): 29° 44' 21.408" N

Longitude (DMS): 84° 53' 54.882" W

Latitude (DD): 29.73927999

Longitude (DD): -84.89857833

## SITE DESCRIPTION

Site Type: Staging Area; Boat Ramp

Access: Government Owned for General Public Use

Operational Status: Open For Business

Scale of Staging Area:

Hours of Operation: 24 Hours

Days of Operation: 7 days a week

Water Type: Brackish

Water Body Name: East Bay - Apalachicola Bay

Boat Launch Capability: Boats Under 25 ft

Number of Boat Ramps: 1

Number of Boat Ramp Lanes: 1

Number of Boat Slips: 0

Number of Moorings: 0

Boat Ramp Surface Composition: Pre-cast concrete slabs

Water Depth at End of Boat Ramp: 0 - 2 feet

Wave Energy at Site: Low

Shoreline Type in Viewable Viscinity: Seawall

Access Constraints: No Access Constraints

Crane Capabilities: Not suitable for crane

Collection Point Capabilities:

Parking Capacity for Trailers: 18

Parking Capacity for Cars: 0

Parking Lot Dimensions:

Parking Surface: Grass

Capable for Light or Heavy Equipment and Type:

Boom Available On-Site and Length:

## ADDITIONAL AMMENITIES

Fuels Available: No Fuel

Propane or Natural Gas Available

Water Available: No Water

Fire Hydrant:

Pumpout Available: No Pumpout

Bathrooms Available: None

Electricity Amperage Available: No Electricity Available

Camping Facilities:

Food Available: Food Available (1-5 mi.)

Security Available and Hours On Duty:

## GENERAL INFORMATION AND COMMENTS

Special/Pre-Planned Events and Dates:

Comments:

Photo URL: [http://ocean.floridamarine.org/waterphotos/ramp\\_photos/photo\\_id/1609/index.htm](http://ocean.floridamarine.org/waterphotos/ramp_photos/photo_id/1609/index.htm)

Facility Name: Fred's Best Retail Boat Ramp

Site ID: FR70009PO

Data Collector (Agency): State of Florida

Survey Type: Planning

Survey Date: 2008-04-01 00:00

Managing Agency: Franklin County

General Manager/Contact Person: FRED MILENDER

Contact Phone #: 850-670-1457

SCAT Description: Franklin County Division 2

Physical Address: Patton Drive, just southwest of US 98

City: Eastpoint

State: Florida

Zip Code 32328

County: Franklin

## GEOSPATIAL INFORMATION

Latitude (DMS): 29° 44' 7.716" N

Longitude (DMS): 84° 52' 49.176" W

Latitude (DD): 29.73547666

Longitude (DD): -84.88032666

## SITE DESCRIPTION

Site Type: Boat Ramp

Access: Government Owned for General Public Use

Operational Status: Open For Business

Scale of Staging Area:

Hours of Operation: 24 Hours

Days of Operation: 7 days a week

Water Type: Saltwater

Water Body Name: Apalachicola Bay

Boat Launch Capability: Boats Under 25 ft

Number of Boat Ramps: 1

Number of Boat Ramp Lanes: 1

Number of Boat Slips: 0

Number of Moorings: 0

Boat Ramp Surface Composition: Poured in place concrete

Water Depth at End of Boat Ramp: 2 - 4 feet

Wave Energy at Site: Low

Shoreline Type in Viewable Viscinity: Oyster

Access Constraints: No Access Constraints

Crane Capabilities: Not suitable for crane

Collection Point Capabilities:

Parking Capacity for Trailers: 5

Parking Capacity for Cars: 0

Parking Lot Dimensions:

Parking Surface: Asphalt

Capable for Light or Heavy Equipment and Type:

Boom Available On-Site and Length:

## ADDITIONAL AMMENITIES

Fuels Available: No Fuel

Propane or Natural Gas Available

Water Available: No Water

Fire Hydrant:

Pumpout Available: No Pumpout

Bathrooms Available: None

Electricity Amperage Available: No Electricity Available

Camping Facilities:

Food Available: On-Site Restaurant

Security Available and Hours On Duty:

## GENERAL INFORMATION AND COMMENTS

Special/Pre-Planned Events and Dates:

Comments:

Photo URL: [http://ocean.floridamarine.org/waterphotos/ramp\\_photos/photo\\_id/1612/index.htm](http://ocean.floridamarine.org/waterphotos/ramp_photos/photo_id/1612/index.htm)

Facility Name: Battery Park City Marina (10 ft Hole)

Site ID: FR00033EE

Data Collector (Agency): State of Florida

Survey Type: Planning

Survey Date: 2008-04-08 00:00

Managing Agency: CITY OF APALACHACOLA

General Manager/Contact Person:

Contact Phone #:

SCAT Description: Franklin County Division 2

Physical Address: ~Bay Ave

City: Apalachicola

State: Florida

Zip Code 32320

County: Franklin

## GEOSPATIAL INFORMATION

Latitude (DMS): 29° 43' 24.066" N

Longitude (DMS): 84° 58' 54.294" W

Latitude (DD): 29.72335166

Longitude (DD): -84.98174833

## SITE DESCRIPTION

Site Type: Staging Area; Boat Ramp; Marina

Access: Public

Operational Status:

Scale of Staging Area:

Hours of Operation: 24 hours

Days of Operation: 7 days a week

Water Type: Salt

Water Body Name: Apalachicola River

Boat Launch Capability: RAMP - Boats OVER 25 FT

Number of Boat Ramps: 3

Number of Boat Ramp Lanes: 3

Number of Boat Slips: 30

Number of Moorings: 0

Boat Ramp Surface Composition: Cement or Asphalt

Wave Energy at Site: Medium

Water Depth at End of Boat Ramp: 6 - 8 feet

Shoreline Type in Viewable Vicinity: Seawall

Access Constraints: No Access Constraints

Crane Capabilities: Suitable for large crane

Collection Point Capabilities:

Parking Capacity for Trailers: 10

Parking Capacity for Cars: 0

Parking Lot Dimensions:

Parking Surface: Paved - Concrete or Asphalt; Dirt/Gravel; Grass

Capable for Light or Heavy Equipment and Type

Boom Available On-Site and Length:

## ADDITIONAL AMMENITIES

Fuels Available: No Fuel

Propane or Natural Gas Available

Water Available: Yes

Fire Hydrant:

Pumpout Available: No Pumpout

Bathrooms Available: No Restrooms

Electricity Amperage Available: 30 Amp Hookup; 50 Amp Ho

Camping Facilities:

Food Available: Food Available (1-5 mi.)

Security Available and Hours On Duty:

## GENERAL INFORMATION AND COMMENTS

Special/Pre-Planned Events and Dates:

Comments:

Photo URL: [http://ocean.floridamarine.org/waterphotos/ramp\\_photos/photo\\_id/1606/index.htm](http://ocean.floridamarine.org/waterphotos/ramp_photos/photo_id/1606/index.htm)