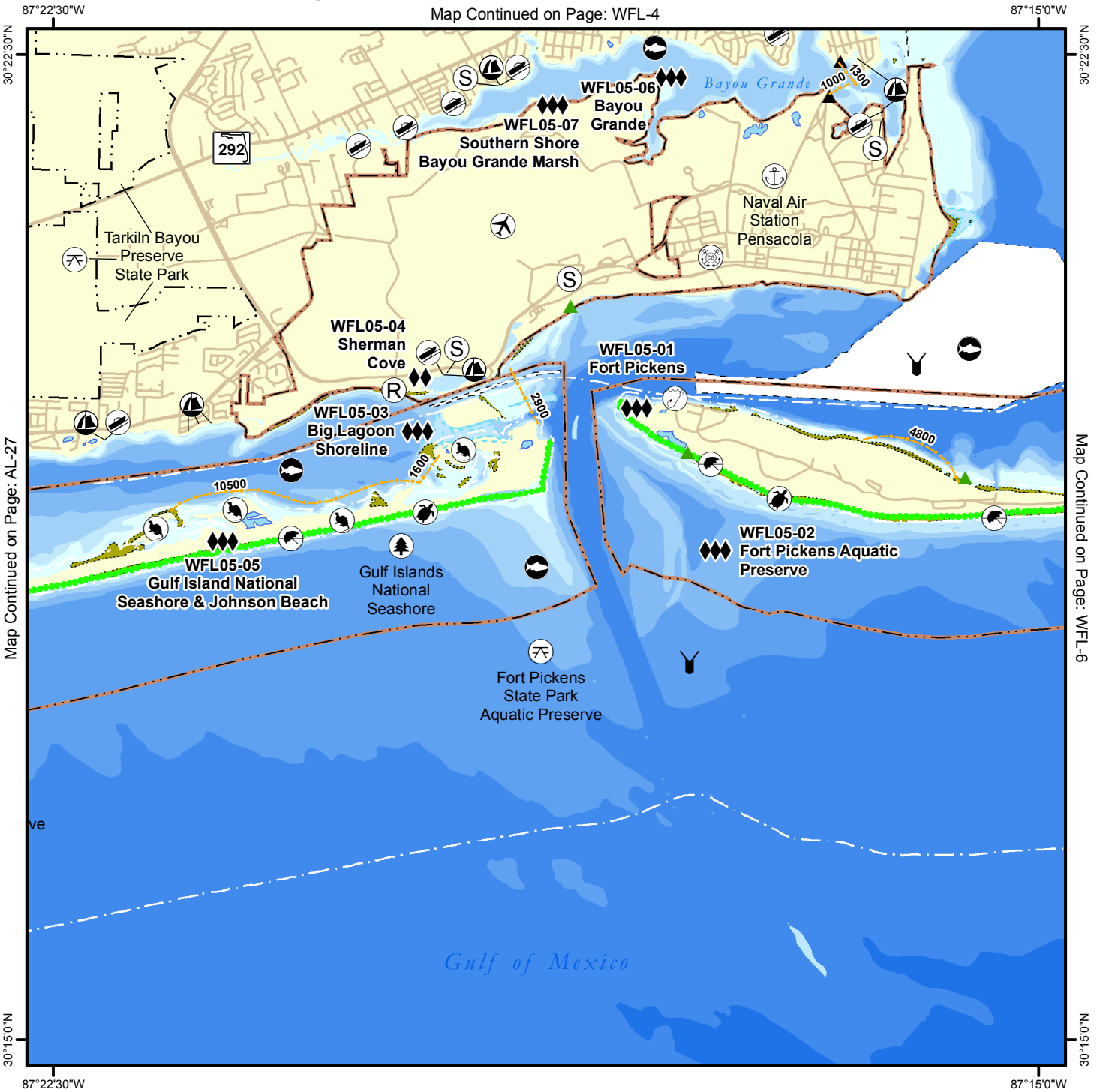


Geographic Response Plan Map: WFL-5

Map Continued on Page: WFL-4



Map Continued on Page: AL-27

Map Continued on Page: WFL-6

<p>Environmentally Sensitive Areas</p> <p>Summer Protection Priority</p> <ul style="list-style-type: none"> ◆◆ A - Protect First ◆◆ B - Protect after A Areas ◆ C - Protect after B Areas <p>Response Methods</p> <ul style="list-style-type: none"> Y Skimmer ☉ Shallow Water Skimmer ▲ Collection Point ▲ Natural Collection Points — General Booming Strategy (Length in Feet) ▣ Incident Command Posts Ⓢ Staging Areas Ⓡ Oil Spill Risk Sites ⓔ Equipment Storage Locations ☉ Beach or Water Access 	<p>Bio-Socioeconomic</p> <ul style="list-style-type: none"> ✈ Airport Ⓜ Aquaculture Ⓜ Aquatic Preserve/State Park Ⓜ Artificial Reef/Hardbottom 🐭 Beach Mouse Habitat 🐻 Black Bear Habitat 🚤 Boat Ramp Ⓜ Coast Guard 🤿 Diving 🐸 Flatwoods Salamander Ⓜ Heliport 🏖 High Recreational Beach 🐬 Manatee 	<ul style="list-style-type: none"> Ⓜ Marina Ⓜ NERR Ⓜ National Park Ⓜ Naval Base 🐚 Panama City Crayfish ⚡ Power Plant 🦎 Reptile Habitat of Concern 🐢 Sea Turtle Nesting 🐦 Shore Bird Habitat Ⓜ Spring 🐟 Sturgeon 🔥 Water Intake Ⓜ Wildlife Refuge 	<ul style="list-style-type: none"> 🐢 Sea Turtle Nesting Beach Ⓜ Federal Managed Areas Ⓜ State Managed Areas Ⓜ Aquaculture/Oysters Ⓜ State Waters/County Line Ⓜ USCG Sector Boundary
---	--	---	---

Sector Mobile Area Committee

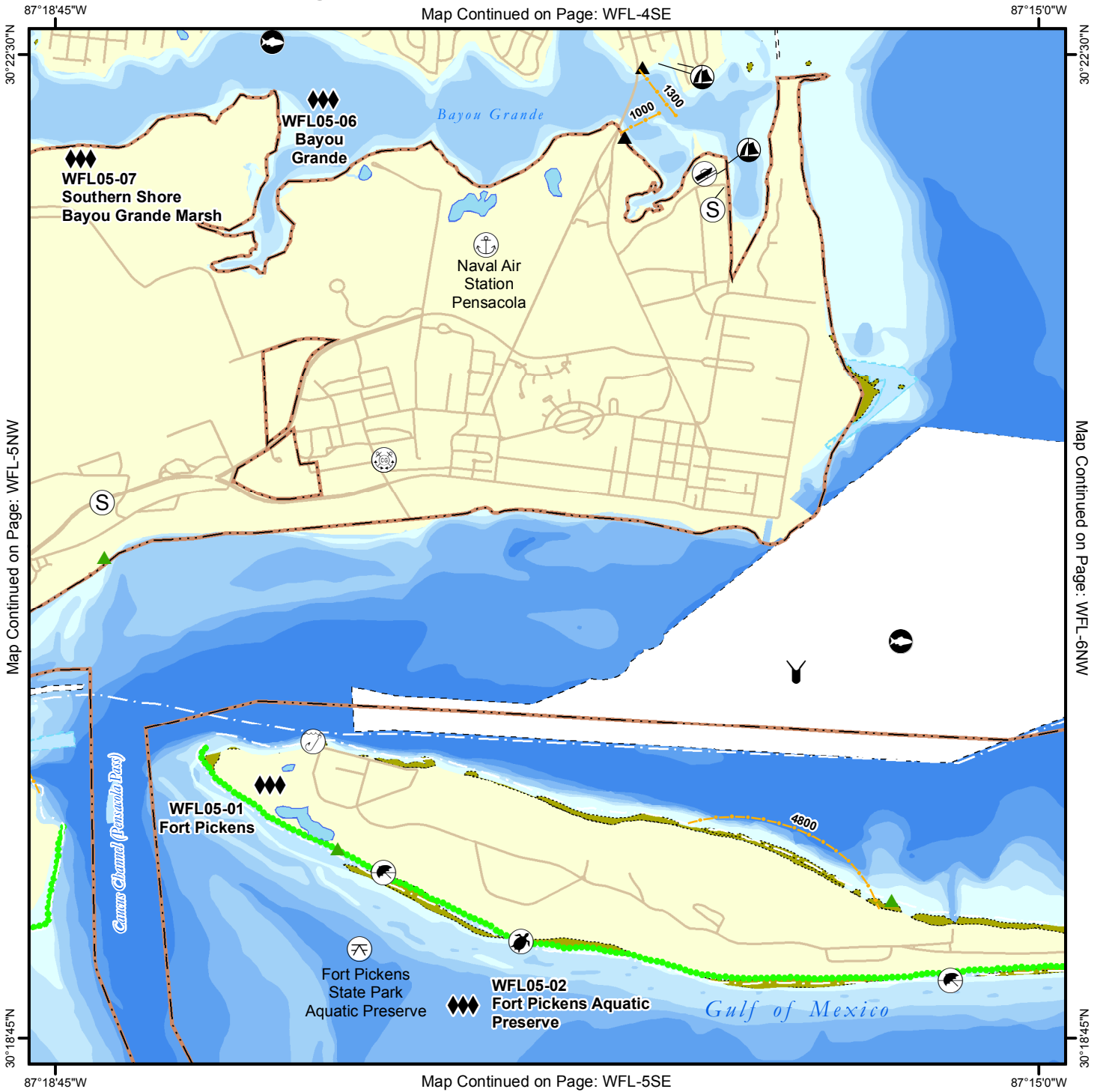
Fish and Wildlife Research Institute

0 0.5 1 1.5 2 Miles

Sector New Orleans Sector Mobile Sector St. Petersburg

Geographic Response Plan Map: WFL-5NE

Map Continued on Page: WFL-4SE



Map Continued on Page: WFL-5NW

Map Continued on Page: WFL-6NW

Map Continued on Page: WFL-5SE

<p>Environmentally Sensitive Areas</p> <p>Summer Protection Priority</p> <ul style="list-style-type: none"> ◆◆◆ A - Protect First ◆◆ B - Protect after A Areas ◆ C - Protect after B Areas <p>Response Methods</p> <ul style="list-style-type: none"> Y Skimmer Shallow Water Skimmer ▲ Collection Point ▲ Natural Collection Points General Booming Strategy (Length in Feet) Incident Command Posts (S) Staging Areas (R) Oil Spill Risk Sites (E) Equipment Storage Locations Beach or Water Access Locations 	<p>Bio-Socioeconomic</p> <ul style="list-style-type: none"> Airport Aquaculture Aquatic Preserve/State Park Artificial Reef/Hardbottom Beach Mouse Habitat Black Bear Habitat Boat Ramp Coast Guard Diving Flatwoods Salamander Heliport High Recreational Beach Manatee 	<ul style="list-style-type: none"> Marina NERR National Park Naval Base Panama City Crayfish Power Plant Reptile Habitat of Concern Sea Turtle Nesting Shore Bird Habitat Spring Sturgeon Water Intake Wildlife Refuge 	<ul style="list-style-type: none"> Sea Turtle Nesting Beach Federal Managed Areas State Managed Areas Aquaculture/Oyster State Waters/County Line USCG Sector Boundary
--	--	---	--

Sector Mobile Area Committee

Fish and Wildlife Research Institute

0 0.25 0.5 0.75 1 Miles

Sector Mobile

Geographic Response Plan Map: WFL-5NW

Map Continued on Page: WFL-4SW



Map Continued on Page: AL-27NE

Map Continued on Page: WFL-5NE

87°22'30\"/>

Map Continued on Page: WFL-5SW

87°18'45\"/>

Environmentally Sensitive Areas

- Summer Protection Priority**
- ◆◆◆ A - Protect First
 - ◆◆ B - Protect after A Areas
 - ◆ C - Protect after B Areas
- Response Methods**
- Y Skimmer
 - ☉ Shallow Water Skimmer
 - ▲ Collection Point
 - ▲ Natural Collection Points
 - ~ General Booming Strategy (Length in Feet)
 - ▣ Incident Command Posts
 - Ⓢ Staging Areas
 - Ⓡ Oil Spill Risk Sites
 - ⓔ Equipment Storage Locations
 - Ⓜ Beach or Water Access Locations

Bio-Socioeconomic

- ✈ Airport
- 🐟 Aquaculture
- 🌿 Aquatic Preserve/State Park
- 🏗 Artificial Reef/Hardbottom
- 🐭 Beach Mouse Habitat
- 🐻 Black Bear Habitat
- 🚤 Boat Ramp
- 🚢 Coast Guard
- 🤿 Diving
- 🐸 Flatwoods Salamander
- 🚁 Helicopter
- 🏖 High Recreational Beach
- 🐠 Manatee

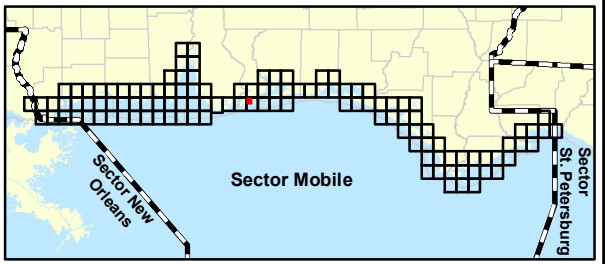
- ⚓ Marina
- 🏠 NERR
- 🌳 National Park
- ⚓ Naval Base
- 🦀 Panama City Crayfish
- ⚡ Power Plant
- 🦎 Reptile Habitat of Concern
- 🐢 Sea Turtle Nesting
- 🐦 Shore Bird Habitat
- 🌊 Spring
- 🐟 Sturgeon
- 💧 Water Intake
- 🌳 Wildlife Refuge

- 🐢 Sea Turtle Nesting Beach
- 📏 Federal Managed Areas
- 📏 State Managed Areas
- 📏 Aquaculture/Oyster
- 📏 State Waters/County Line
- 📏 USCG Sector Boundary

Sector Mobile
Area Committee

Fish and Wildlife
Research Institute

0 0.25 0.5 0.75 1
Miles



Name: Fort Pickens

Site ID:

WFL05-01

Protection Priority (Season): Spring: Summer: Fall: Winter:

Site Description:

GEOSPATIAL INFORMATION

Latitude (DMS): 30° 19' 43.720"

Longitude (DMS): 87° 17' 56.901"

County: Escambia

Latitude (DD): 30.328811

Longitude (DD): -87.299139

SCAT Division: Escambia County Division 1

ESI Map: WFL-5

ESI Name: Fort Barrancas, Fla.

NOAA Chart: 11384_1

CHART Name: PENSACOLA BAY ENTRANCE

USGS Quad: 30087-C3

QUAD Name: Fort Barrancas

Managed Area (if applicable): Gulf Islands National Seashore

General Location:

CONTACT INFORMATION

Contacts: Escambia County EOC (Manager) 850-471-6300; NPS-Gulf Islands National Seashore (Chief Ranger) 850-934-2615 or (24hr) 850-916-3010; NRC 800-424-8802; FL State Watch Office 800-320-0519; FWC Non-Game Biologist 850-265-3676; DEP-OER 850-595-8300; D-8 Duty NOAA SSC (24hr) 206-375-5697; DOI - Regional Environmental Officer 404-331-4524 or 404-852-5414

RESOURCES AT RISK INFORMATION

Shoreline Type: Fine to medium grained sand beaches, exposed tidal flats**Habitat:** Sand beach, mud flats, seagrasses**Wildlife:** Blue Crab, Pink Shrimp, Brown Shrimp, Stone Crab, White Shrimp, Loggerhead Sea, Turtle (T), Seagrass, Least Tern (T), Santa Rosa Beach Mouse, Black Skimmer, Snowy Plover (T), possible Gulf Sturgeon (T), wading birds, diving birds, shorebirds, raptors, Piping Plover, Wilson Plover, manatees, dolphins**Threaten/Endangered Species:** Sea Turtles (Loggerhead, Green, Kemp's Ridley, Leatherback), Least Tern (T), Snowy Plover (T),**Socio-Economic Resources:** Archaeological and historical resources around point of Fort Pickens and north shore of Pensacola Bay

RESPONSE CONSIDERATIONS

Staging Area Shermans Cove Marina (NAS), Park West Boat Ramp**Collection Points:** Natural collection points on beach**Area Access:** Boat, vehicle**Spill Risk:****Response Resources:**

PROTECTION STRATEGY INFORMATION

Tidal Range (FT):**Average Current (KTS):****Ease of Protection:** Unknown**Min. Boom Length (FT):****Boom Type:** Sorbent**Booming Method:** Protection/Exclusion**Protection Strategy:** Open water skimming. Consider sorbent boom from campground to ranger station with guidance from GINS GCRO_READ Division supervisor and biologist.

Name: Fort Pickens Aquatic Preserve

Site ID:

WFL05-02

Protection Priority (Season): Spring: Summer: Fall: Winter:

Site Description:

GEOSPATIAL INFORMATION

Latitude (DMS): 30° 18' 45.721"

Longitude (DMS): 87° 18' 29.902"

County: Escambia

Latitude (DD): 30.312700

Longitude (DD): -87.308306

SCAT Division: Escambia County Division 1

ESI Map: WFL-5

ESI Name: Fort Barrancas, Fla.

NOAA Chart: 11384_1

CHART Name: PENSACOLA BAY ENTRANCE

USGS Quad: 30087-C3

QUAD Name: Fort Barrancas

Managed Area (if applicable): State of Florida

General Location: Gulf of Mexico, Pensacola Bay, Big Lagoon

CONTACT INFORMATION

Contacts: Escambia County EOC (Manager) 850-471-6300; Apalachicola NERR (Director) 850-670-7700; FDEP NW District (Environmental Manager) 850-595-8300; NRC 800-424-8802; FL State Watch Office 800-320-0519; FWC Non-Game Biologist 850-265-3676; DEP-OER 850-595-8300; D-8 Duty NOAA SSC (24hr) 206-375-5697; DOI - Regional Environmental Officer 404-331-4524 or 404-852-5414

RESOURCES AT RISK INFORMATION

Shoreline Type: Salt marsh, sand beach, little or no development**Habitat:** Salt marsh, seagrass beds, sandy bottom - Spanish Cove and Redfish Cove should be protected highly**Wildlife:** Blue crabs, pink shrimp, Redfish, snapper, speckled trout, scallops, dolphin, possible Gulf Sturgeon (T), manatees, shorebirds, wading birds, waterfowl, sheepshead, sea turtles**Threaten/Endangered Species:** Loggerhead, Kemp's Ridley, Green, and Leatherback sea turtles coming to nest and feed, Gulf Sturgeon (critical habitat)**Socio-Economic Resources:** Recreational fishing, archaeological resources, commercial shipping lanes

RESPONSE CONSIDERATIONS

Staging Area: Gulf Breeze, Sherman Cove Marina (contact NAS for access)**Collection Points:****Area Access:** Boat, Helicopter**Spill Risk:** Shermans Cove Marina, ICW, NAS Pensacola, recreational vessels**Response Resources:** This is effective and underwater state park, and a Florida outstanding water

PROTECTION STRATEGY INFORMATION

Tidal Range (FT):**Average Current (KTS):****Ease of Protection:** Unknown**Min. Boom Length (FT):****Boom Type:** N/A**Booming Method:** NA**Protection Strategy:** Open water skimming.

Name: Big Lagoon Shoreline

Site ID:

WFL05-03

Protection Priority (Season): Spring: Summer: Fall: Winter:

Site Description:

GEOSPATIAL INFORMATION

Latitude (DMS): 30° 20' 5.995" N

Longitude (DMS): 87° 19' 0.861" W

County: Escambia

Latitude (DD): 30.334999

Longitude (DD): -87.316906

SCAT Division: Escambia County Division 1

ESI Map: WFL-5

ESI Name: Fort Barrancas, Fla.

NOAA Chart: 11384_1

CHART Name: PENSACOLA BAY ENTRANCE

USGS Quad: 30087-C3

QUAD Name: Fort Barrancas

Managed Area (if applicable):

General Location:

CONTACT INFORMATION

Contacts: Escambia County EOC (Manager) 850-471-6300; NRC 800-424-8802; FL State Watch Office 800-320-0519; FWC Non-Game Biologist 850-265-3676; DEP-OER 850-595-8300; D-8 Duty NOAA SSC (24hr) 206-375-5697; DOI - Regional Environmental Officer 404-331-4524 or 404-852-5414

RESOURCES AT RISK INFORMATION

Shoreline Type: Western half has exposed tidal flats, shoreline in Eastern half is mostly developed with sand bottom

Habitat: Seagrass, salt/brackish marsh, swamps, scrub-shrub wetlands

Wildlife: Blue Crab, Pink Shrimp, Brown Shrimp, Stone Crab, White Shrimp, Loggerhead Sea Turtle (T), Seagrass, Least Tern (T), Santa Rosa Beach Mouse, Black Skimmer, Snowy Plover (T), Perdido Key Beach Mouse (E), possible Gulf Sturgeon (T)

Threaten/Endangered Species: Loggerhead Sea Turtle (T), Least Tern (T), Snowy Plover (T), Perdido Key Beach Mouse (E)

Socio-Economic Resources:

RESPONSE CONSIDERATIONS

Staging Area: Big Lagoon State Park

Collection Points: Several Marinas

Area Access: Boat, vehicle

Spill Risk:

Response Resources:

PROTECTION STRATEGY INFORMATION

Tidal Range (FT):

Average Current (KTS):

Ease of Protection: Unknown

Min. Boom Length (FT):

Boom Type:

Booming Method: No Information Provided

Protection Strategy:



Name: Sherman Cove

Site ID: WFL05-04

Protection Priority (Season): Spring: Summer: Fall: Winter:

Site Description:

GEOSPATIAL INFORMATION

Latitude (DMS): 30° 19' 58.364" Longitude (DMS): 87° 19' 33.989" County: Escambia
 Latitude (DD): 30.332879 Longitude (DD): -87.326108 SCAT Division: Escambia County Division 1
 ESI Map: WFL-5 ESI Name: Fort Barrancas, Fla.
 NOAA Chart: 11383_1 CHART Name: PENSACOLA BAY
 USGS Quad: 30087-C3 QUAD Name: Fort Barrancas

Managed Area (if applicable): Naval Air Station Pensacola

General Location:

CONTACT INFORMATION

Contacts: Escambia County EOC (Manager) 850-471-6300; Pensacola Naval Air Station (Nat. Resource Manager/Mark Gibson) 850-554-5650; NRC 800-424-8802; FL State Watch Office 800-320-0519; FWC Non-Game Biologist 850-265-3676; DEP-OER 850-595-8300; D-8 Duty NOAA SSC (24hr) 206-375-5697; DOI - Regional Environmental Officer 404-331-4524 or 404-852-5414

RESOURCES AT RISK INFORMATION

Shoreline Type: Salt Marshes, Submerged aquatic vegetation

Habitat: Salt marshes, submerged aquatic vegetation.

Wildlife: Blue Crab, Pink Shrimp, Brown Shrimp, Stone Crab, White Shrimp, Seagrass, juv. and adult fish, Loggerhead Sea Turtle (T), Santa Rosa Beach Mouse, Perdido Key Beach Mouse (E), Least Tern (T), Snowy Plover (T), Piping Plover (T), poss. Gulf Sturgeon (E), possible Gulf Sturgeon (T)

Threaten/Endangered Species:

Socio-Economic Resources:

RESPONSE CONSIDERATIONS

Staging Area Sherman Cove

Collection Points:

Area Access: Boat, vehicle

Spill Risk:

Response Resources:

PROTECTION STRATEGY INFORMATION

Tidal Range (FT): Average Current (KTS): Ease of Protection: Unknown
 Min. Boom Length (FT): Boom Type: Booming Method: Deflection, Protection/Exclusion

Protection Strategy: Close off Snell entrance.



Name: Gulf Island National Seashore & Johnson Beach

Site ID: WFL05-05

Protection Priority (Season): Spring: Summer: Fall: Winter:

Site Description:

GEOSPATIAL INFORMATION

Latitude (DMS): 30° 18' 47.317"	Longitude (DMS): 87° 21' 12.583"	County: Escambia
Latitude (DD): 30.313144	Longitude (DD): -87.353495	SCAT Division: Escambia County Division 1
ESI Map: WFL-5	ESI Name: Fort Barrancas, Fla.	
NOAA Chart 11383_1	CHART Name PENSACOLA BAY	
USGS Quad: 30087-C3	QUAD Name: Fort Barrancas	

Managed Area (if applicable): Gulf Islands National Seashore

General Location:

CONTACT INFORMATION

Contacts: Escambia County EOC (Manager) 850-471-6300; NPS-Gulf Islands National Seashore (Chief Ranger) 850-934-2615 or (24hr) 850-916-3010; FL Div of Historical Resources (Compliance) 850-245-6333; MS SHPO (main) 850-245-6440; NRC 800-424-8802; FL State Watch Office 800-320-0519; FWC Non-Game Biologist 850-265-3676; DEP-OER 850-595-8300; D-8 Duty NOAA SSC (24hr) 206-375-5697; DOI - Regional Environmental Officer 404-331-4524 or 404-852-5414

RESOURCES AT RISK INFORMATION

Shoreline Type: Sandy beach, mud flats, salt marsh, seagrass, seawalls, jetties, clay

Habitat: Sandy beach, mud flats, salt marsh, seagrass,

Wildlife: Waterfowl, wading birds, shorebirds, diving birds, dolphin, manatees, river otters, alligators, sharks, deer, sea turtles, Diamondback Terrapins, fish, Perdido Key Beach Mouse, raptors

Threaten/Endangered Species: Perdido Key Beach Mouse (E), Sea Turtles (Leatherback-E, Hawksbill-E, Green-E, Kemp's Ridley-E, and Loggerhead-T)

Socio-Economic Resources: Archaeological and historic sites, recreational beach

RESPONSE CONSIDERATIONS

Staging Area Sherman Cove Marina (NAS), Navy Point Boat Ramp, Johnson Beach Parking Lot

Collection Points:

Area Access: Boat, vehicle

Spill Risk: Shipping channels, recreational vessels

Response Resources:

PROTECTION STRATEGY INFORMATION

Tidal Range (FT):	Average Current (KTS):	Ease of Protection: Medium
Min. Boom Length (FT):	Boom Type: Hard, possibly sorbent	Booming Method: Protection/Exclusion

Protection Strategy: Be aware of shallow seagrass shoals and mud flats between Redfish Cove and Spanish Cove. Deploy boom from Redfish Cove to Spanish Cove. Consider sorbent boom with guidance from GINS GCRO_READ Division supervisor and biologist. Use open water skimmers on ocean/beach side.



Name: Bayou Grande

Site ID: WFL05-06

Protection Priority (Season): Spring: Summer: Fall: Winter:

Site Description:

GEOSPATIAL INFORMATION

Latitude (DMS): 30° 22' 19.716" Longitude (DMS): 87° 17' 47.902" County: Escambia
 Latitude (DD): 30.372143 Longitude (DD): -87.296640 SCAT Division: Escambia County Division 1
 ESI Map: WFL-5 ESI Name: Fort Barrancas, Fla.
 NOAA Chart 11383_1 CHART Name: PENSACOLA BAY
 USGS Quad: 30087-C3 QUAD Name: Fort Barrancas

Managed Area (if applicable):

General Location:

CONTACT INFORMATION

Contacts: Escambia County EOC (Manager) 850-471-6300; Pensacola Naval Air Station (Nat. Resource Manager/Mark Gibson) 850-554-5650; NRC 800-424-8802; FL State Watch Office 800-320-0519; FWC Non-Game Biologist 850-265-3676; DEP-OER 850-595-8300; D-8 Duty NOAA SSC (24hr) 206-375-5697; DOI - Regional Environmental Officer 404-331-4524 or 404-852-5414

RESOURCES AT RISK INFORMATION

Shoreline Type: Brackish water marshes, sandy beach, seawalls, rip-rap

Habitat: Brackish water marshes, sandy beach, tidal flats

Wildlife: Blue Crab, Pink Shrimp, Brown Shrimp, Stone Crab, White Shrimp, Loggerhead Sea, Turtle (T), Least Tern (T), Black Skimmer, Snowy Plover (T), possible Gulf Sturgeon (T), Bald Eagle, wading birds, manatees, dolphins, diving birds

Threaten/Endangered Species: Loggerhead Sea Turtle (T), Least Tern (T), Snowy Plover (T), Gulf Sturgeon (T),

Socio-Economic Resources: Recreational and commercial vessels

RESPONSE CONSIDERATIONS

Staging Area Bayou Grande Marina, Mac's Marina, Navy Point Boat Ramp

Collection Points:

Area Access: Boat, vehicle

Spill Risk: Marinas, NAS flight operations, recreational and commercial vessels

Response Resources:

PROTECTION STRATEGY INFORMATION

Tidal Range (FT): Average Current (KTS): Ease of Protection: Medium
 Min. Boom Length (FT): 1,250 Boom Type: Hard Booming Method: Deflection, Protection/Exclusion

Protection Strategy: Boom across mouth of Bayou Grande



Name: Southern Shore Bayou Grande Marsh

Site ID: WFL05-07

Protection Priority (Season): Spring: Summer: Fall: Winter:

Site Description:

GEOSPATIAL INFORMATION

Latitude (DMS): 30° 22' 6.866" N Longitude (DMS): 87° 18' 42.090" County: Escambia
 Latitude (DD): 30.368574 Longitude (DD): -87.311692 SCAT Division: Escambia County Division 1
 ESI Map: WFL-5 ESI Name: Fort Barrancas, Fla.
 NOAA Chart 11383_1 CHART Name: PENSACOLA BAY
 USGS Quad: 30087-C3 QUAD Name: Fort Barrancas

Managed Area (if applicable): Naval Air Station Pensacola

General Location:

CONTACT INFORMATION

Contacts: Escambia County EOC (Manager) 850-471-6300; Pensacola Naval Air Station (Nat. Resource Manager/Mark Gibson) 850-554-5650; NRC 800-424-8802; FL State Watch Office 800-320-0519; FWC Non-Game Biologist 850-265-3676; DEP-OER 850-595-8300; D-8 Duty NOAA SSC (24hr) 206-375-5697; DOI - Regional Environmental Officer 404-331-4524 or 404-852-5414

RESOURCES AT RISK INFORMATION

Shoreline Type: Brackish water marshes, sandy beaches

Habitat: Brackish water marshes, Particulars at western end

Wildlife: Blue Crab, Pink Shrimp, Brown Shrimp, Stone Crab, White Shrimp, Loggerhead Sea, Turtle (T), Seagrass, Least Tern (T), Santa Rosa Beach Mouse, Black Skimmer, Snowy Plover (T), Perdido Key Beach Mouse (E), possible Gulf Sturgeon (T)

Threaten/Endangered Species: Loggerhead Sea Turtle (T), Least Tern (T), Snowy Plover (T), Perdido Key Beach Mouse (E), Gulf Sturgeon (T),

Socio-Economic Resources:

RESPONSE CONSIDERATIONS

Staging Area Bayou Grande Marina or shoreline Park Boat Ramp, Mac's Marina

Collection Points:

Area Access: Boat, vehicle

Spill Risk:

Response Resources:

PROTECTION STRATEGY INFORMATION

Tidal Range (FT): Average Current (KTS): Ease of Protection: Unknown
 Min. Boom Length (FT): Boom Type: Booming Method: Deflection, Protection/Exclusion

Protection Strategy:



Facility Name: NAS Pensacola

Site ID:

Data Collector (Agency):

Survey Type:

Survey Date:

Managing Agency: US Navy

General Manager/Contact Person:

Contact Phone #:

SCAT Description: Escambia County Division 1

Physical Address: 190 Radford Blvd

City: Pensacola

State: Florida

Zip Code 32508

County: Escambia

GEOSPATIAL INFORMATION

Latitude (DMS): 30°20'47.926"N

Longitude (DMS): 87°18'34.387"W

Latitude (DD): 30.34664600

Longitude (DD): -87.30955200

SITE DESCRIPTION

Site Type: Marina with Boat Ramp

Access: Government Owned for Government Use Only

Operational Status: Open for Business

Scale of Staging Area: Medium

Hours of Operation:

Days of Operation: 7 Days/week

Water Type: Salt

Water Body Name: Sherman's Cove

Boat Launch Capability: Boats Over 25ft

Number of Boat Ramps: 1

Number of Boat Ramp Lanes: 1

Number of Boat Slips: 25

Number of Moorings:

Boat Ramp Surface Composition: Poured in Place Concrete

Water Depth at End of Boat Ramp:

Wave Energy at Site: Low

Shoreline Type in Viewable Vicinity: tidal marsh

Access Constraints: Military personnel or veterans

Crane Capabilities: NA

Collection Point Capabilities:

Parking Capacity for Trailers: 45

Parking Capacity for Cars: 100

Parking Lot Dimensions:

Parking Surface: Asphalt

Capable for Light or Heavy Equipment and Type:

Boom Available On-Site and Length:

ADDITIONAL AMMENITIES

Fuels Available:

Propane or Natural Gas Available

Water Available:

Fire Hydrant:

Pumpout Available:

Bathrooms Available:

Electricity Amperage Available:

Camping Facilities:

Food Available:

Security Available and Hours On Duty:

GENERAL INFORMATION AND COMMENTS

Special/Pre-Planned Events and Dates:

Comments:

Photo URL:



Facility Name: Bayou Grande Marina (NAS)

Site ID: ES002540V

Data Collector (Agency):

Survey Type: Planning

Survey Date:

Managing Agency: NAS

General Manager/Contact Person: Chief of Port Operations

Contact Phone #: 850-453-2624

SCAT Description: Escambia County Division 2

Physical Address: 190 Radford Blvd

City: Pensacola

State: Florida

Zip Code 32508

County: Escambia

GEOSPATIAL INFORMATION

Latitude (DMS): 30° 21' 59.842" N

Longitude (DMS): 87° 16' 12.042" W

Latitude (DD): 30.36662291

Longitude (DD): -87.27001162

SITE DESCRIPTION

Site Type: Staging Area; Boat Ramp; Marina

Access:

Operational Status:

Scale of Staging Area:

Hours of Operation: 800-1630

Days of Operation: Thursday - Monday

Water Type: Salt

Water Body Name: Bayou Grande

Boat Launch Capability:

Number of Boat Ramps: 1

Number of Boat Ramp Lanes: 2

Number of Boat Slips: 206

Number of Moorings: 0

Boat Ramp Surface Composition: Poured in Place Concrete

Water Depth at End of Boat Ramp:

Wave Energy at Site:

Shoreline Type in Viewable Viscinity:

Access Constraints:

Crane Capabilities:

Collection Point Capabilities:

Parking Capacity for Trailers: 50

Parking Capacity for Cars: 50

Parking Lot Dimensions:

Parking Surface: Asphalt

Capable for Light or Heavy Equipment and Type:

Boom Available On-Site and Length:

ADDITIONAL AMMENITIES

Fuels Available:

Propane or Natural Gas Available

Water Available:

Fire Hydrant:

Pumpout Available: Yes

Bathrooms Available: Restroom w/ Showers

Electricity Amperage Available:

Camping Facilities:

Food Available:

Security Available and Hours On Duty:

GENERAL INFORMATION AND COMMENTS

Special/Pre-Planned Events and Dates:

Comments:

Photo URL:



Facility Name: Mac's Marina

Site ID: ES00229KT

Data Collector (Agency):

Survey Type:

Survey Date:

Managing Agency: Mac's Marina

General Manager/Contact Person: Miles McLeach

Contact Phone #: 850-453-3775

SCAT Description: Escambia County Division 1

Physical Address: 31 Newman Ave

City: Pensacola

State: Florida

Zip Code: 32507

County: Escambia

GEOSPATIAL INFORMATION

Latitude (DMS): 30° 22' 16.220" N

Longitude (DMS): 87° 19' 6.040" W

Latitude (DD): 30.37117232

Longitude (DD): -87.31834438

SITE DESCRIPTION

Site Type: Staging Area; Boat Ramp; Marina

Access:

Operational Status:

Scale of Staging Area:

Hours of Operation:

Days of Operation:

Water Type: Brackish

Water Body Name: Bayou Grande

Boat Launch Capability:

Number of Boat Ramps: 1

Number of Boat Ramp Lanes: 1

Number of Boat Slips: 15

Number of Moorings: 0

Boat Ramp Surface Composition: Poured in Place Concrete

Water Depth at End of Boat Ramp:

Wave Energy at Site:

Shoreline Type in Viewable Viscinity:

Access Constraints:

Crane Capabilities:

Collection Point Capabilities:

Parking Capacity for Trailers: 0

Parking Capacity for Cars: 0

Parking Lot Dimensions:

Parking Surface: Gravel/Sand/Dirt

Capable for Light or Heavy Equipment and Type:

Boom Available On-Site and Length:

ADDITIONAL AMMENITIES

Fuels Available:

Propane or Natural Gas Available

Water Available:

Fire Hydrant:

Pumpout Available:

Bathrooms Available: Restroom Facilities

Electricity Amperage Available:

Camping Facilities:

Food Available:

Security Available and Hours On Duty:

GENERAL INFORMATION AND COMMENTS

Special/Pre-Planned Events and Dates:

Comments:

Photo URL:



Facility Name: Sherman Cove Marina (NAS)

Site ID: ES00269AF

Data Collector (Agency):

Survey Type: Planning

Survey Date:

Managing Agency: NAS

General Manager/Contact Person: Chief of Port Operations

Contact Phone #: 850-453-2624

SCAT Description: Escambia County Division 1

Physical Address: Radford Boulevard near the back entrance from Blue Angel Parkway

City: Pensacola

State: Florida

Zip Code 32508

County: Escambia

GEOSPATIAL INFORMATION

Latitude (DMS): 30° 20' 4.565" N

Longitude (DMS): 87° 19' 30.082" W

Latitude (DD): 30.33460126

Longitude (DD): -87.32502269

SITE DESCRIPTION

Site Type: Boat Ramp; Marina

Access: Private

Operational Status:

Scale of Staging Area:

Hours of Operation: 24 hours

Days of Operation: 7 days a week

Water Type: Salt

Water Body Name: Big Lagoon

Boat Launch Capability:

Number of Boat Ramps: 2

Number of Boat Ramp Lanes: 2

Number of Boat Slips: 32

Number of Moorings: 0

Boat Ramp Surface Composition: Poured in Place Concrete

Water Depth at End of Boat Ramp:

Wave Energy at Site:

Shoreline Type in Viewable Viscinity:

Access Constraints:

Crane Capabilities:

Collection Point Capabilities:

Parking Capacity for Trailers: 50

Parking Capacity for Cars: 50

Parking Lot Dimensions:

Parking Surface: Asphalt

Capable for Light or Heavy Equipment and Type:

Boom Available On-Site and Length:

ADDITIONAL AMMENITIES

Fuels Available:

Propane or Natural Gas Available

Water Available: Yes

Fire Hydrant:

Pumpout Available:

Bathrooms Available:

Electricity Amperage Available:

Camping Facilities:

Food Available:

Security Available and Hours On Duty:

GENERAL INFORMATION AND COMMENTS

Special/Pre-Planned Events and Dates:

Comments:

Photo URL:



Name: NAS Fueling Dock

Site ID:

MOB-R6

Site Description:

GEOSPATIAL INFORMATION

Latitude (DMS): 30° 19' 56.633" N

Longitude (DMS): 87° 19' 54.378" W

Latitude (DD): 30.33239799

Longitude (DD): -87.33177175

Physical Address: Fuel Farm Rd (off Radford Blvd)

City: Pensacola

State: Florida

Zip Code 32508

County: Escambia

CONTACT INFORMATION

Contacts: NAS - Natural Resource Manager (Mark Gibson) 850-554-5650

RISK INFORMATION

Facility Type:

Types of Oil:

Most Probable Risk

Maximum Risk:

Worst Case Discharge:

