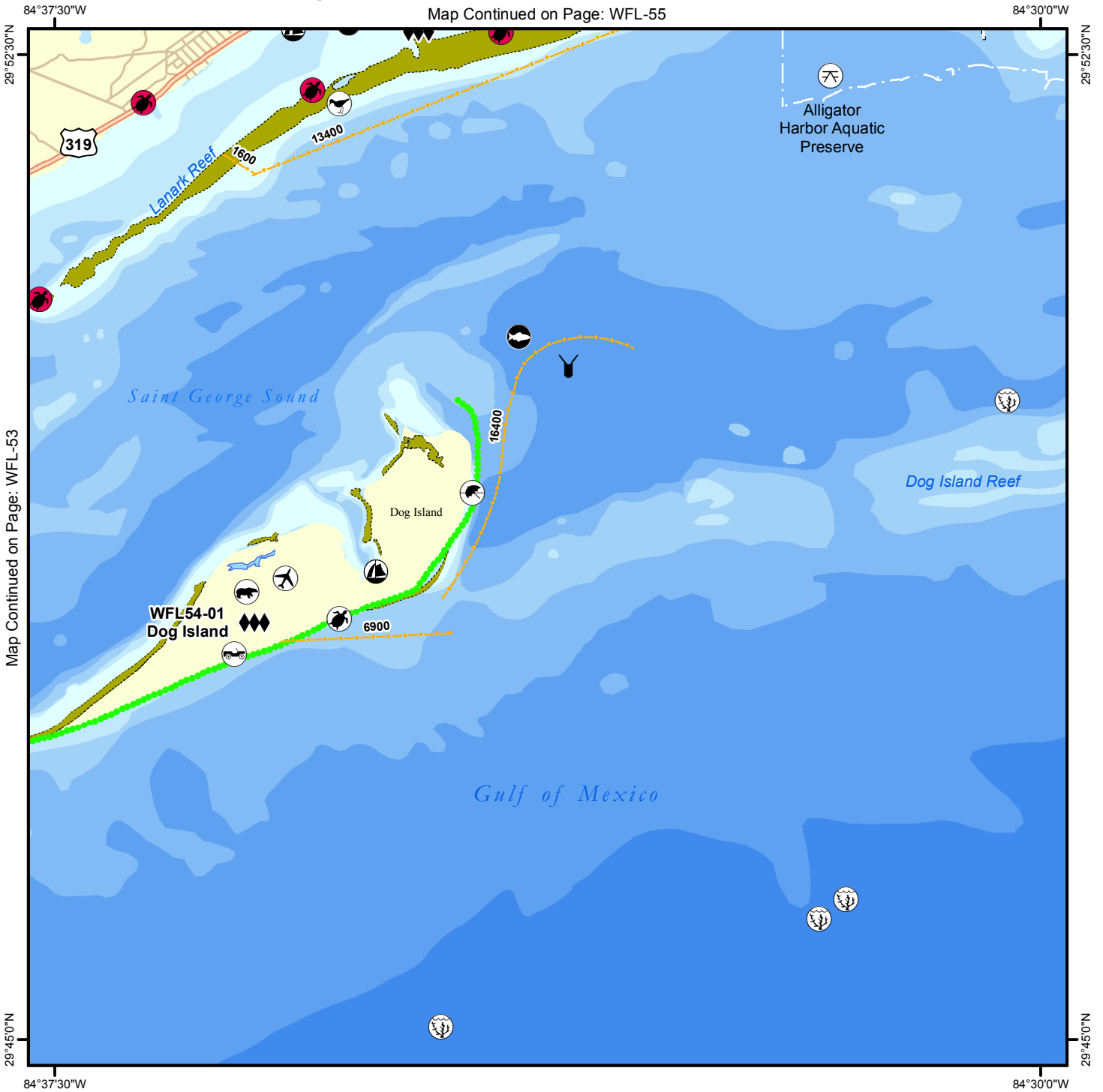


Geographic Response Plan Map: WFL-54

Map Continued on Page: WFL-55



Map Continued on Page: WFL-53

<p>Environmentally Sensitive Areas</p> <p>Summer Protection Priority</p> <ul style="list-style-type: none"> ◆◆◆ A - Protect First ◆◆ B - Protect after A Areas ◆ C - Protect after B Areas <p>Response Methods</p> <ul style="list-style-type: none"> Y Skimmer Shallow Water Skimmer ▲ Collection Point ▲ Natural Collection Points General Booming Strategy (Length in Feet) Incident Command Posts Ⓢ Staging Areas Ⓡ Oil Spill Risk Sites ⓔ Equipment Storage Locations Beach or Water Access 	<p>Bio-Socioeconomic</p> <ul style="list-style-type: none"> ✈ Airport Ⓜ Aquaculture Ⓜ Aquatic Preserve/State Park Ⓜ Artificial Reef/Hardbottom Ⓜ Beach Mouse Habitat Ⓜ Black Bear Habitat Ⓜ Boat Ramp Ⓜ Coast Guard Ⓜ Diving Ⓜ Flatwoods Salamander Ⓜ Heliport Ⓜ High Recreational Beach Ⓜ Manatee 	<ul style="list-style-type: none"> Ⓜ Marina Ⓜ NERR Ⓜ National Park Ⓜ Naval Base Ⓜ Panama City Crayfish Ⓜ Power Plant Ⓜ Reptile Habitat of Concern Ⓜ Sea Turtle Nesting Ⓜ Shore Bird Habitat Ⓜ Spring Ⓜ Sturgeon Ⓜ Water Intake Ⓜ Wildlife Refuge 	<ul style="list-style-type: none"> Sea Turtle Nesting Beach Federal Managed Areas State Managed Areas Aquaculture/Oysters State Waters/County Line USCG Sector Boundary
--	--	---	---

Sector Mobile Area Committee

Fish and Wildlife Research Institute

0 0.5 1 1.5 2 Miles

Sector New Orleans Sector Mobile Sector St. Petersburg

Name: Dog Island

Site ID:

WFL54-01

Protection Priority (Season): Spring: Summer: Fall: Winter:

Site Description: Sparsely inhabited island with TNC 3/4 island owned

GEOSPATIAL INFORMATION

Latitude (DMS): 29° 48' 20.759"

Longitude (DMS): 84° 35' 39.645"

County: Franklin

Latitude (DD): 29.805767

Longitude (DD): -84.594346

SCAT Division: Franklin County Division 3

ESI Map: WFL-54

ESI Name: Dog Island, Fla.

NOAA Chart 11405_1

CHART Name APALACHEE BAY

USGS Quad: 29084-G5

QUAD Name: Dog Island

Managed Area (if applicable): TNC

General Location: Apalachicola Division of Sector

CONTACT INFORMATION

Contacts: Franklin County EOC 850-653-8977; FWC Law Enforcement 850-697-2298 or (cell) 850-251-7247; Nature Conservancy (Bristol Office) 850-643-2756 or 850-643-5049; Dog Island Fire Dept 850-228-5899; Barrier Island Trust 850-922-2948; NRC 800-424-8802; FL State Watch Office 800-320-0519; FWC Non-Game Biologist 850-265-3676; DEP-OER 850-245-2873; D-8 Duty NOAA SSC (24hr) 206-375-5697; DOI - Regional Environmental Officer 404-331-4524 or 404-852-5414

RESOURCES AT RISK INFORMATION

Shoreline Type: Sand Beach, Mangroves, Coastal Grassland, Salt Marsh**Habitat:** Nesting shorebird habitat, structure nesting, piping plover habitat**Wildlife:** Blue & Stne Crab, Pnk, Wht, & Brwn Shrimp, Bald Eagle, Egrets, Herons, Terns(T), Plovers(T), Oystercatchers, Sea Turtles, possible Gulf Sturgeon, black skimmers, possible Gulf Sturgeon (T)**Threaten/Endangered Species:** Terns(T), Plovers(T), Kemp's Ridley(E), Green(E), Loggerhead(T), Leatherback(E), piping**Socio-Economic Resources:**

RESPONSE CONSIDERATIONS

Staging Area Timber Island launch, Lanark Village Boat Ramp and Yacht Club, Florida State Marine Lab Boat Ramp**Collection Points:****Area Access:** Boat Only**Spill Risk:****Response Resources:** FSU Marine Lab

PROTECTION STRATEGY INFORMATION

Tidal Range (FT): 2-3**Average Current (KTS):****Ease of Protection:** Unknown**Min. Boom Length (FT):** 23,000**Boom Type:****Booming Method:** Containment, Deflection**Protection Strategy:** Place 7,000 of deflection boom towards east end of Dog Island with 16,000' of collection boom wrapping around north tip in "J" configuration with shallow skimmer to collect oil.