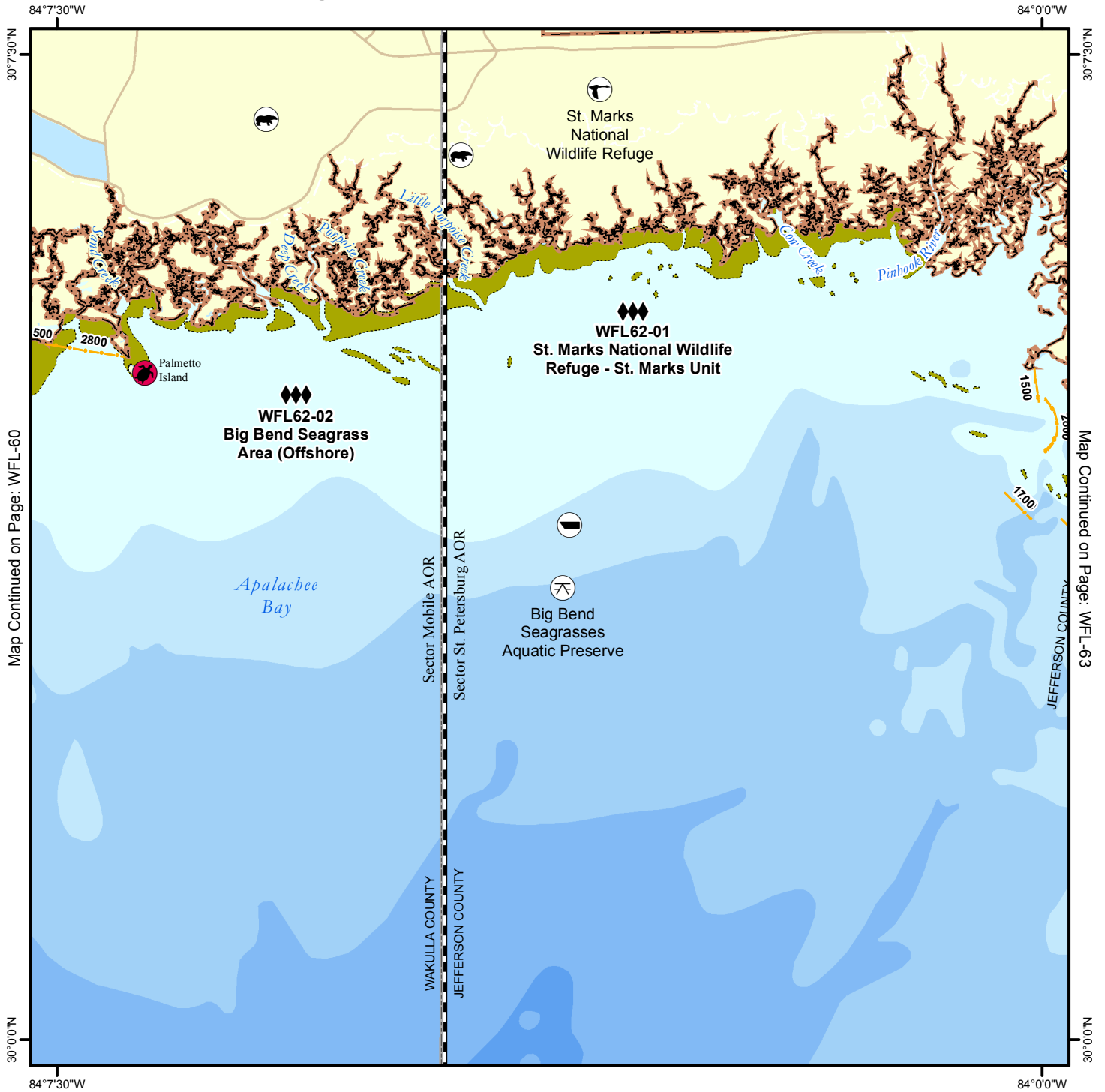


Geographic Response Plan Map: WFL-62



Map Continued on Page: WFL-60

Map Continued on Page: WFL-63

<p>Environmentally Sensitive Areas</p> <p>Summer Protection Priority</p> <ul style="list-style-type: none"> ◆◆◆ A - Protect First ◆◆ B - Protect after A Areas ◆ C - Protect after B Areas <p>Response Methods</p> <ul style="list-style-type: none"> Y Skimmer ☉ Shallow Water Skimmer ▲ Collection Point ▲ Natural Collection Points — General Booming Strategy (Length in Feet) ▣ Incident Command Posts Ⓢ Staging Areas Ⓡ Oil Spill Risk Sites ⓔ Equipment Storage Locations Ⓜ Beach or Water Access 	<p>Bio-Socioeconomic</p> <ul style="list-style-type: none"> ✈ Airport Ⓜ Aquaculture Ⓜ Aquatic Preserve/State Park Ⓜ Artificial Reef/Hardbottom Ⓜ Beach Mouse Habitat Ⓜ Black Bear Habitat Ⓜ Boat Ramp Ⓜ Coast Guard Ⓜ Diving Ⓜ Flatwoods Salamander Ⓜ Heliport Ⓜ High Recreational Beach Ⓜ Manatee 	<ul style="list-style-type: none"> Ⓜ Marina Ⓜ NERR Ⓜ National Park Ⓜ Naval Base Ⓜ Panama City Crayfish ⚡ Power Plant Ⓜ Reptile Habitat of Concern Ⓜ Sea Turtle Nesting Ⓜ Shore Bird Habitat Ⓜ Spring Ⓜ Sturgeon Ⓜ Water Intake Ⓜ Wildlife Refuge 	<ul style="list-style-type: none"> 🌿 Sea Turtle Nesting Beach 🏠 Federal Managed Areas 🏠 State Managed Areas 🏠 Aquaculture/Oysters 🏠 State Waters/County Line 🏠 USCG Sector Boundary
--	--	---	---

Sector Mobile Area Committee

Fish and Wildlife Research Institute

Name: St. Marks National Wildlife Refuge - St. Marks Unit

Site ID:

WFL62-01

Protection Priority (Season): Spring: Summer: Fall: Winter:

Site Description: Salt marsh

GEOSPATIAL INFORMATION

Latitude (DMS): 30° 6' 8.446" N

Longitude (DMS): 84° 4' 22.515" W

County: Jefferson

Latitude (DD): 30.102346

Longitude (DD): -84.072921

SCAT Division: Jefferson County Division 1

ESI Map: WFL-62

ESI Name: Cobb Rocks, Fla.

NOAA Chart: 11405_1

CHART Name: APALACHEE BAY

USGS Quad: 30084-A1

QUAD Name: Cobb Rocks

Managed Area (if applicable): St. Marks National Wildlife Refuge

General Location: Apalachicola Division of Sector, Mouth of St. Marks River to Aucilla River

CONTACT INFORMATION

Contacts: Jefferson EOC Director 850-342-0211; FWC Law Enforcement 850-697-2298 or 850-251-7247 (cell); Wakulla County DEM (EM Director) 850-745-7200; USFWS St.Marks NWR 850-925-6121; NRC 800-424-8802; FL State Watch Office 800-320-0519; FWC Non-Game Biologist 850-265-3676; DEP-OER 850-595-8300; D-8 Duty NOAA SSC (24hr) 206-375-5697; DOI - Regional Environmental Officer 404-331-4524 or 404-852-5414

RESOURCES AT RISK INFORMATION

Shoreline Type: Tidal creeks, salt marsh, exposed marshes, sheltered marshes.

Habitat: Tidal creeks- salt and marsh- seagrass beds, hardwood swamp, tidal flats- oyster bars.

Wildlife: Blue & Stne Crab, Pnk, Wht, & Brwn Shrimp, Oysters, Clams, Scallops, Seagrass, Bald Eagle, Egrets, Herons, Terns(T), Plovers(T), Oystercatchers, FL Blk Bear (T), Manatees, Dolphins, Gulf Sturgeon, Sea Turtles

Threaten/Endangered Species: Terns(T), Plovers(T), Kemp's Ridley(E), Green(E), Loggerhead(T), Leatherback(E)

Socio-Economic Resources: Recreational and commercial fishing

RESPONSE CONSIDERATIONS

Staging Area: St.Marks Public Boat Ramp, St Marks National Wildlife Refuge (@ Lighthouse), access from 98 Aucilla launch, Econfina marina.

Collection Points: St.Marks lighthouse

Area Access: Boat, vehicle

Spill Risk: Recreational, Industry on St.Marks/Barge/ Purdom power plant (City of Tallahassee).

Response Resources: MAX CURRENT: < 1-2

PROTECTION STRATEGY INFORMATION

Tidal Range (FT): 2.3

Average Current (KTS):

Ease of Protection: Flood

Min. Boom Length (FT):

Boom Type:

Booming Method: Protection/Exclusion

Protection Strategy: Protect creeks, rivers, inlets, and tidal pools.



Name: Big Bend Seagrass Area (Offshore)

Site ID: WFL62-02

Protection Priority (Season): Spring: Summer: Fall: Winter:

Site Description: Seagrass

GEOSPATIAL INFORMATION

Latitude (DMS): 30° 4' 30.439" N **Longitude (DMS):** 84° 4' 16.660" W **County:** Jefferson
Latitude (DD): 30.075122 **Longitude (DD):** -84.071294 **SCAT Division:** Jefferson County Division 1
ESI Map: WFL-62 **ESI Name:** Cobb Rocks, Fla.
NOAA Chart: 11405_1 **CHART Name:** APALACHEE BAY
USGS Quad: 30084-A1 **QUAD Name:** Cobb Rocks

Managed Area (if applicable): Big Bend Seagrass Aquatic Preserve

General Location: Apalachicola Division of Sector

CONTACT INFORMATION

Contacts: Jefferson EOC Director 850-342-0211; FWC Law Enforcement 850-697-2298 or 850-251-7247 (cell); USFWS St.Marks NWR 850-925-6121; NRC 800-424-8802; FL State Watch Office 800-320-0519; FWC Non-Game Biologist 850-265-3676; DEP-OER 850-595-8300; D-8 Duty NOAA SSC (24hr) 206-375-5697; DOI - Regional Environmental Officer 404-331-4524 or 404-852-5414

RESOURCES AT RISK INFORMATION

Shoreline Type: Open Water

Habitat: Seagrass, hard "Live" bottom

Wildlife: Blue & Stne Crab, Pnk, Wht, & Brwn Shrimp, Oysters, Clams, Scallops, Seagrass, Bld Eagle, Sea Turtles, Dolphins

Threaten/Endangered Species: Kemp's Ridley(E), Green(E), Loggerhead(T), Leatherback(E) Sea Turtles, Manatees, Gulf Surgeon

Socio-Economic Resources: Recreational fishing

RESPONSE CONSIDERATIONS

Staging Area: St.Marks Public Boat Ramp, St Marks National Wildlife Refuge (@ Lighthouse), Aucilla launch, Econfina Marina

Collection Points: Shallow Water Skimmer

Area Access: Boat, vehicle

Spill Risk: Recreational, Barge traffic/Tanks in St.Marks.

Response Resources: MAX CURRENT: <1-2

PROTECTION STRATEGY INFORMATION

Tidal Range (FT): 2.3 **Average Current (KTS):** **Ease of Protection:** Unknown
Min. Boom Length (FT): **Boom Type:** **Booming Method:** Protection/Exclusion
Protection Strategy: Limit use of 20 pound danforth anchors due to high probability of permanent damage of rhizomes of seagrass bed. Mitigate potential impact by utilizing alternate strategy (shallow water skimmer).

