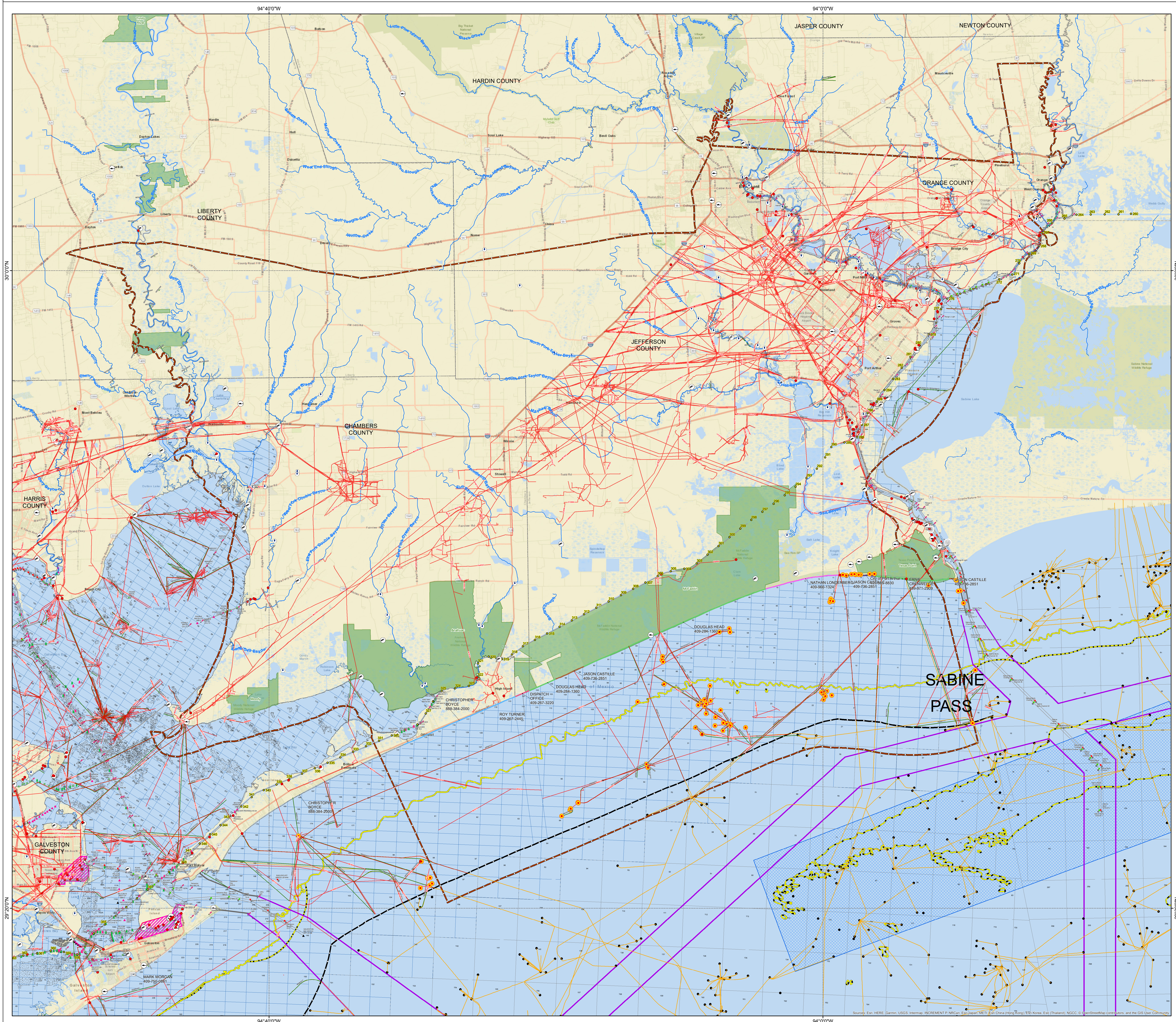
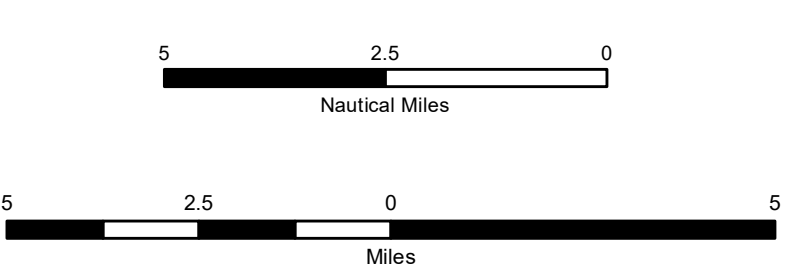


Response Map Region 1 - Alternative Technologies, Jurisdictions and Response Resources



- Water Intakes
- Heliports
- Coast Guard Stations
- Boat Ramps
- Beach Mile Marker
- GIWW Mile Marker
- State Water Structures (TGLO)
- Inspection Facilities (TGLO)
- State Submerged Tracts (TGLO)
- Federal Lease Blocks (BOEM)
- Pipelines (RRC)
- Pipelines (TGLO)
- Pipelines (BOEM)
- Platforms (BOEM)
- 3 Marine League Line
- Rivers/Creeks
- TGLO Region 1
- Fairways
- Interoceanic Waterway
- Jetty
- Parks
- County Boundary
- Pre-Approved Surface Washing
- Pre-Approved Dispersant Use Boundary Line
- Pre-Approved 10 Meter ISO-bath
- ISB Exclusion Areas
- Oyster
- Beach Stakeholders**
- CHAMBERS COUNTY OEM
- CHAMBERS COUNTY SHERIFF
- CITY OF PORT ARTHUR
- GALVESTON COUNTY OEM
- JEFFERSON COUNTY
- TP&WD (SEA RIM STATE PARK)
- US FISH & WILDLIFE



Texas General Land Office
 Commissioner George P. Bush
 Enterprise Technology Solutions
 Map Compiled by: Mark Conway
 October 2019

The Texas General Land Office makes no representations or warranties regarding the accuracy or completeness of the information depicted on this map or the data from which it was produced. This map is NOT suitable for navigational purposes and does not purport to depict or establish boundaries between private and public land.

Report A Spill: 800-832-8224