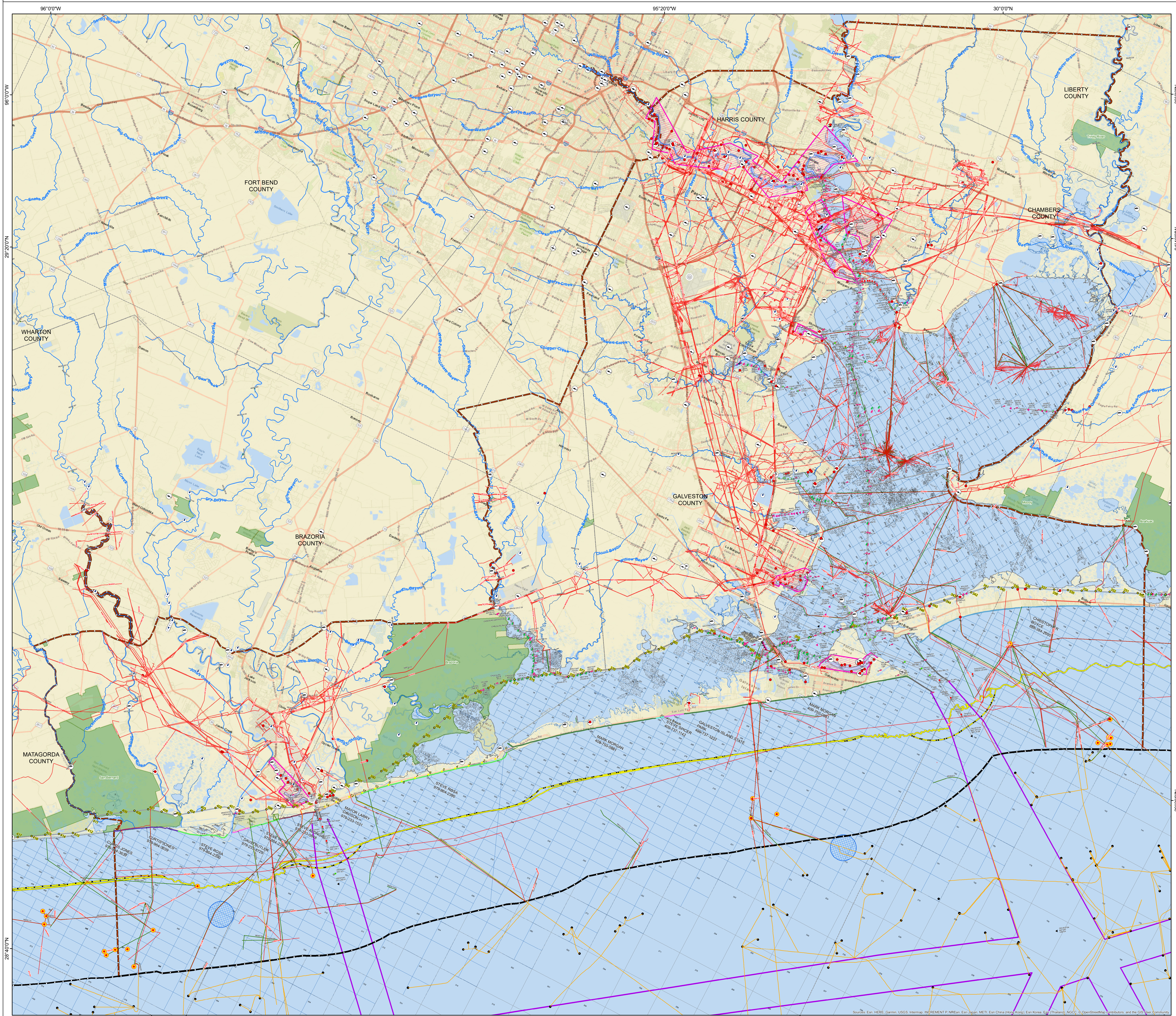
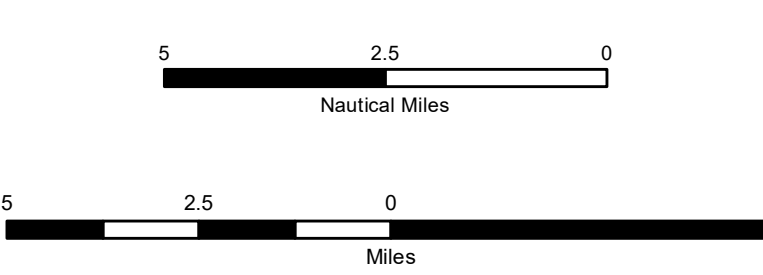
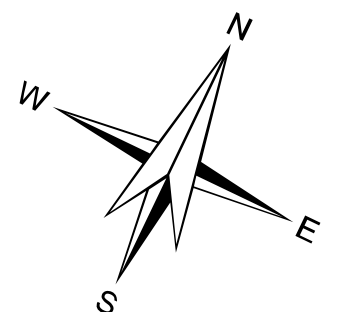


# Response Map Region 2 - Alternative Technologies, Jurisdictions and Response Resources



- Water Intakes
- Heliports
- Coast Guard Stations
- Boat Ramps
- Beach Mile Marker
- GIWW Mile Marker
- State Water Structures (TGLO)
- Inspection Facilities (TGLO)
- State Submerged Tracts (TGLO)
- Federal Lease Blocks (BOEM)
- Pipelines (RRC)
- Pipelines (TGLO)
- Pipelines (BOEM)
- Platforms (BOEM)
- 3 Marine League Line
- Rivers/Creeks
- TGLO Region 2
- Fairways
- Interoceanic Waterway
- Jetty
- Parks
- County Boundary
- Pre-Approved Surface Washing
- Pre-Approved Dispersant Use Boundary Line
- Pre-Approved 10 Meter ISO-bath
- ISB Exclusion Areas
- Oyster
- Beach Stakeholders**
- BRAZORIA COUNTY OEM
- CITY OF GALVESTON OEM
- CITY OF QUINTANA
- CITY OF SURFSIDE
- GALVESTON COUNTY OEM
- JAMACIA BEACH
- TEXAS PARKS & WILDLIFE
- US FISH & WILDLIFE



Texas General Land Office  
 Commissioner: George P. Bush  
 Enterprise Technology Solutions  
 Map Compiled by: Mark Conway  
 October 2019

The Texas General Land Office makes no representations or warranties regarding the accuracy or completeness of the information depicted on this map or the data from which it was produced. This map is NOT suitable for navigational purposes and does not purport to depict or establish boundaries between private and public land.

Report A Spill: 800-832-8224