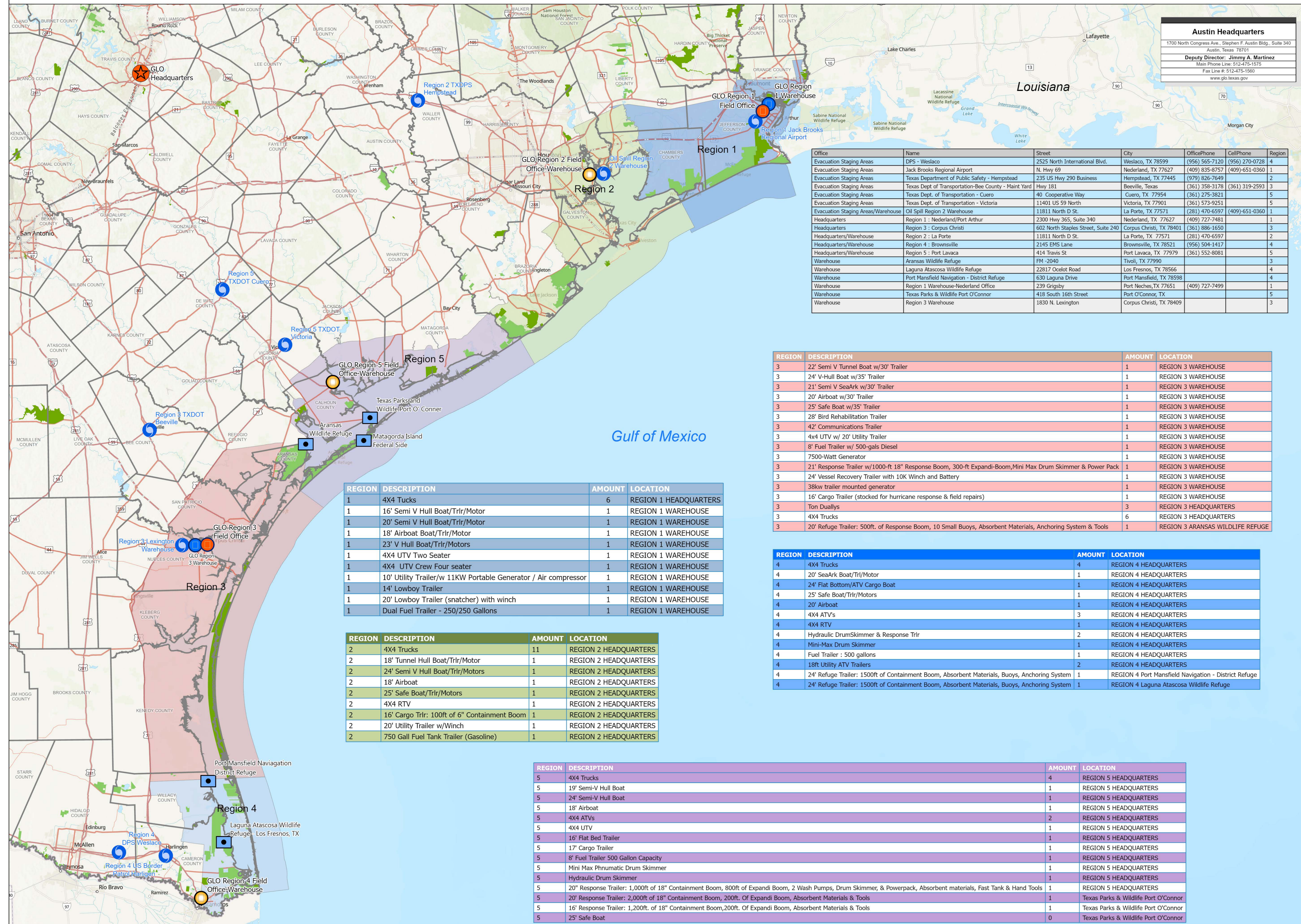


Oil Spill Program Offices, Response Equipment & Evacuation Staging Areas



Austin Headquarters	
1700 North Congress Ave., Stephen F. Austin Bldg., Suite 340 Austin, Texas 78701	
Deputy Director: Jimmy A. Martinez	
Main Phone Line: 512-475-1575	
Fax Line #: 512-475-1560	
www.glo.texas.gov	

Commissioner Dawn Buckingham, M.D.



Office	Name	Street	City	OfficePhone	CellPhone	Region
Evacuation Staging Areas	DPS - Weslaco	2525 North International Blvd.	Weslaco, TX 78599	(956) 565-7120	(956) 270-0728	4
Evacuation Staging Areas	Jack Brooks Regional Airport	N. Hwy 69	Nederland, TX 77627	(409) 835-8757	(409)-651-0360	1
Evacuation Staging Areas	Texas Department of Public Safety - Hempstead	235 US Hwy 290 Business	Hempstead, TX 77445	(979) 826-7649		2
Evacuation Staging Areas	Texas Dept. of Transportation-Bee County - Maint Yard	Hwy 181	Beeville, Texas	(361) 358-3178	(361) 319-2593	3
Evacuation Staging Areas	Texas Dept. of Transportation - Cuero	40 Cooperative Way	Cuero, TX 77954	(361) 275-3821		5
Evacuation Staging Areas	Texas Dept. of Transportation - Victoria	11401 US 59 North	Victoria, TX 77901	(361) 573-9251		5
Evacuation Staging Areas/Warehouse	Oil Spill Region 2 Warehouse	11811 North D St.	La Porte, TX 77571	(281) 470-6597	(409)-651-0360	1
Headquarters	Region 1 : Nederland/Port Arthur	2300 Hwy 365, Suite 340	Nederland, TX 77627	(409) 727-7481		1
Headquarters	Region 3 : Corpus Christi	602 North Staples Street, Suite 240	Corpus Christi, TX 78401	(361) 886-1650		3
Headquarters/Warehouse	Region 2 : La Porte	11811 North D St.	La Porte, TX 77571	(281) 470-6597		2
Headquarters/Warehouse	Region 4 : Brownsville	2145 EMS Lane	Brownsville, TX 78521	(956) 504-1417		4
Headquarters/Warehouse	Region 5 : Port Lavaca	414 Travis St	Port Lavaca, TX 77979	(361) 552-8081		5
Warehouse	Aransas Wildlife Refuge	FM -2040	Tivoli, TX 77990			3
Warehouse	Laguna Atascosa Wildlife Refuge	22817 Ocelot Road	Los Fresnos, TX 78566			4
Warehouse	Port Mansfield Navigation - District Refuge	630 Laguna Drive	Port Mansfield, TX 78598			4
Warehouse	Region 1 Warehouse-Nederland Office	239 Grigsby	Port Neches, TX 77651	(409) 727-7499		1
Warehouse	Texas Parks & Wildlife Port O'Connor	418 South 16th Street	Port O'Connor, TX			5
Warehouse	Region 3 Warehouse	1830 N. Lexington	Corpus Christi, TX 78409			3

- Field Office
- Warehouse
- Field Office & Warehouse
- Stephen F. Austin Building
- Response Trailers
- Evacuation/Staging Areas

Oil Spill Regions

- Region 1
- Region 2
- Region 3
- Region 4
- Region 5

REGION	DESCRIPTION	AMOUNT	LOCATION
1	4X4 Trucks	6	REGION 1 HEADQUARTERS
1	16' Semi V Hull Boat/Trlr/Motor	1	REGION 1 WAREHOUSE
1	20' Semi V Hull Boat/Trlr/Motor	1	REGION 1 WAREHOUSE
1	18' Airboat Boat/Trlr/Motor	1	REGION 1 WAREHOUSE
1	23' V Hull Boat/Trlr/Motors	1	REGION 1 WAREHOUSE
1	4X4 UTV Two Seater	1	REGION 1 WAREHOUSE
1	4X4 UTV Crew Four seater	1	REGION 1 WAREHOUSE
1	10' Utility Trailer/w 11KW Portable Generator / Air compressor	1	REGION 1 WAREHOUSE
1	14' Lowboy Trailer	1	REGION 1 WAREHOUSE
1	20' Lowboy Trailer (snatcher) with winch	1	REGION 1 WAREHOUSE
1	Dual Fuel Trailer - 250/250 Gallons	1	REGION 1 WAREHOUSE

REGION	DESCRIPTION	AMOUNT	LOCATION
2	4X4 Trucks	11	REGION 2 HEADQUARTERS
2	18' Tunnel Hull Boat/Trlr/Motor	1	REGION 2 HEADQUARTERS
2	24' Semi V Hull Boat/Trlr/Motors	1	REGION 2 HEADQUARTERS
2	18' Airboat	1	REGION 2 HEADQUARTERS
2	25' Safe Boat/Trlr/Motors	1	REGION 2 HEADQUARTERS
2	4X4 RTV	1	REGION 2 HEADQUARTERS
2	16' Cargo Trlr: 100ft of 6" Containment Boom	1	REGION 2 HEADQUARTERS
2	20' Utility Trailer w/Winch	1	REGION 2 HEADQUARTERS
2	750 Gall Fuel Tank Trailer (Gasoline)	1	REGION 2 HEADQUARTERS

REGION	DESCRIPTION	AMOUNT	LOCATION
3	22' Semi V Tunnel Boat w/30' Trailer	1	REGION 3 WAREHOUSE
3	24' V-Hull Boat w/35' Trailer	1	REGION 3 WAREHOUSE
3	21' Semi V SeaArk w/30' Trailer	1	REGION 3 WAREHOUSE
3	20' Airboat w/30' Trailer	1	REGION 3 WAREHOUSE
3	25' Safe Boat w/35' Trailer	1	REGION 3 WAREHOUSE
3	28' Bird Rehabilitation Trailer	1	REGION 3 WAREHOUSE
3	42' Communications Trailer	1	REGION 3 WAREHOUSE
3	4x4 UTV w/ 20' Utility Trailer	1	REGION 3 WAREHOUSE
3	8' Fuel Trailer w/ 500-gals Diesel	1	REGION 3 WAREHOUSE
3	7500-Watt Generator	1	REGION 3 WAREHOUSE
3	21' Response Trailer w/1000-ft 18" Response Boom, 300-ft Expandi-Boom, Mini Max Drum Skimmer & Power Pack	1	REGION 3 WAREHOUSE
3	24' Vessel Recovery Trailer with 10K Winch and Battery	1	REGION 3 WAREHOUSE
3	38kw trailer mounted generator	1	REGION 3 WAREHOUSE
3	16' Cargo Trailer (stocked for hurricane response & field repairs)	1	REGION 3 WAREHOUSE
3	Ton Duallys	3	REGION 3 HEADQUARTERS
3	4X4 Trucks	6	REGION 3 HEADQUARTERS
3	20' Refuge Trailer: 500ft. of Response Boom, 10 Small Buoys, Absorbent Materials, Anchoring System & Tools	1	REGION 3 ARANSAS WILDLIFE REFUGE

REGION	DESCRIPTION	AMOUNT	LOCATION
4	4X4 Trucks	4	REGION 4 HEADQUARTERS
4	20' SeaArk Boat/Trl/Motor	1	REGION 4 HEADQUARTERS
4	24' Flat Bottom/ATV Cargo Boat	1	REGION 4 HEADQUARTERS
4	25' Safe Boat/Trlr/Motors	1	REGION 4 HEADQUARTERS
4	20' Airboat	1	REGION 4 HEADQUARTERS
4	4X4 ATV's	3	REGION 4 HEADQUARTERS
4	4X4 RTV	1	REGION 4 HEADQUARTERS
4	Hydraulic DrumSkimmer & Response Trlr	2	REGION 4 HEADQUARTERS
4	Mini-Max Drum Skimmer	1	REGION 4 HEADQUARTERS
4	Fuel Trailer : 500 gallons	1	REGION 4 HEADQUARTERS
4	18ft Utility ATV Trailers	2	REGION 4 HEADQUARTERS
4	24' Refuge Trailer: 1500ft of Containment Boom, Absorbent Materials, Buoys, Anchoring System	1	REGION 4 Port Mansfield Navigation - District Refuge
4	24' Refuge Trailer: 1500ft of Containment Boom, Absorbent Materials, Buoys, Anchoring System	1	REGION 4 Laguna Atascosa Wildlife Refuge

REGION	DESCRIPTION	AMOUNT	LOCATION
5	4X4 Trucks	4	REGION 5 HEADQUARTERS
5	19' Semi-V Hull Boat	1	REGION 5 HEADQUARTERS
5	24' Semi-V Hull Boat	1	REGION 5 HEADQUARTERS
5	18' Airboat	1	REGION 5 HEADQUARTERS
5	4X4 ATV's	2	REGION 5 HEADQUARTERS
5	4X4 UTV	1	REGION 5 HEADQUARTERS
5	16' Flat Bed Trailer	1	REGION 5 HEADQUARTERS
5	17' Cargo Trailer	1	REGION 5 HEADQUARTERS
5	8' Fuel Trailer 500 Gallon Capacity	1	REGION 5 HEADQUARTERS
5	Mini Max Phnumatic Drum Skimmer	1	REGION 5 HEADQUARTERS
5	Hydraulic Drum Skimmer	1	REGION 5 HEADQUARTERS
5	20' Response Trailer: 1,000ft of 18" Containment Boom, 800ft of Expandi Boom, 2 Wash Pumps, Drum Skimmer, & Powerpack, Absorbent materials, Fast Tank & Hand Tools	1	REGION 5 HEADQUARTERS
5	20' Response Trailer: 2,000ft of 18" Containment Boom, 200ft. Of Expandi Boom, Absorbent Materials & Tools	1	Texas Parks & Wildlife Port O'Connor
5	16' Response Trailer: 1,200ft. of 18" Containment Boom, 200ft. Of Expandi Boom, Absorbent Materials & Tools	1	Texas Parks & Wildlife Port O'Connor
5	25' Safe Boat	0	Texas Parks & Wildlife Port O'Connor



The Texas General Land Office makes no representations or warranties regarding the accuracy or completeness of the information depicted on this map or the data from which it was produced. This map is not suitable for navigational purposes and does not purport to depict boundaries of private and public land.

Produced on 06/12/2023
GLO Oil Spill Logistics Team
GLO Geospatial Technology Services

1:1,027,082

