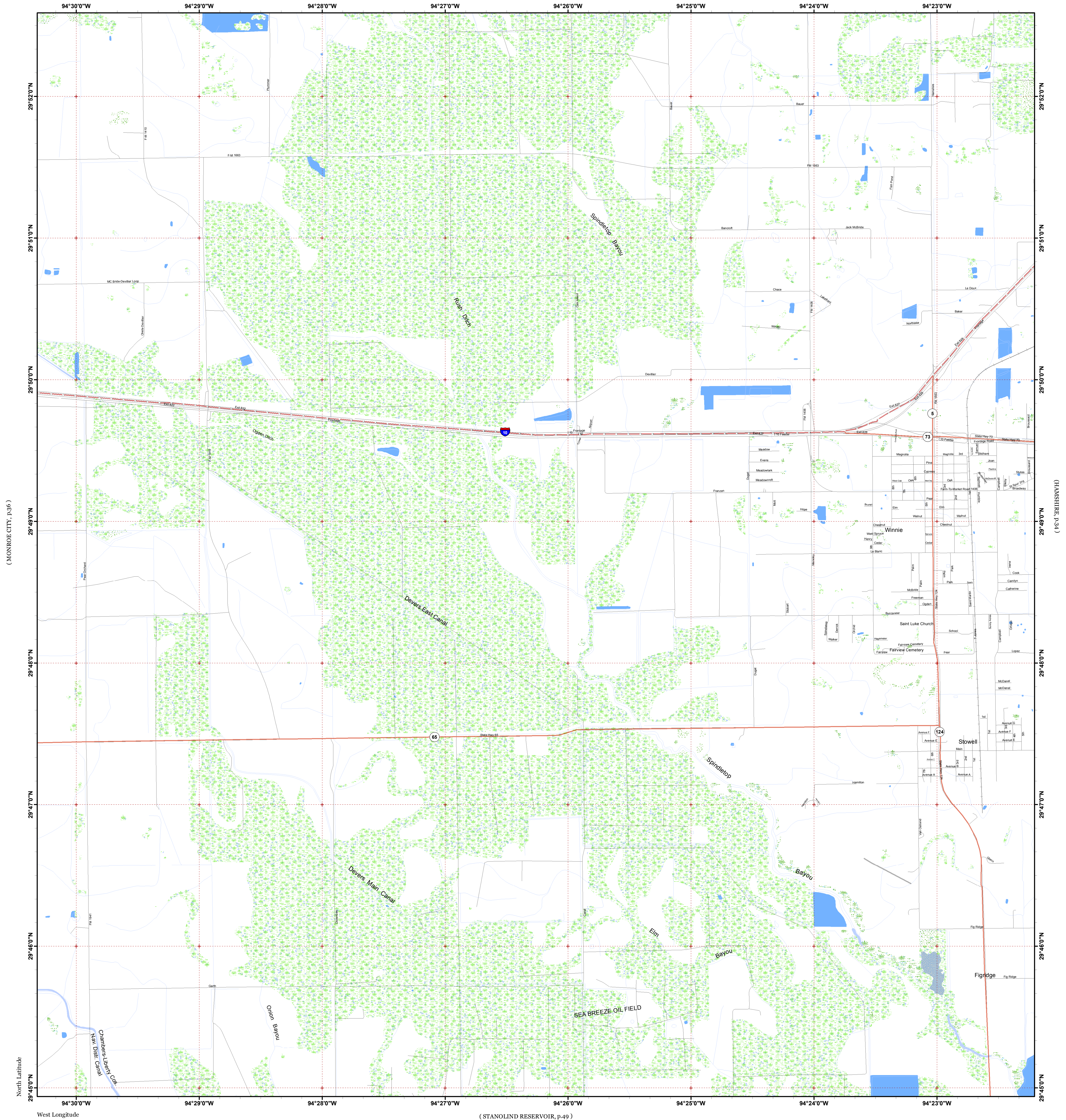


STOWELL

(WINNIE NW, p.22)

Click Here or Scroll Down for Associated Map Data

Click on the Geographic Response Plan Target to View the ICS Form



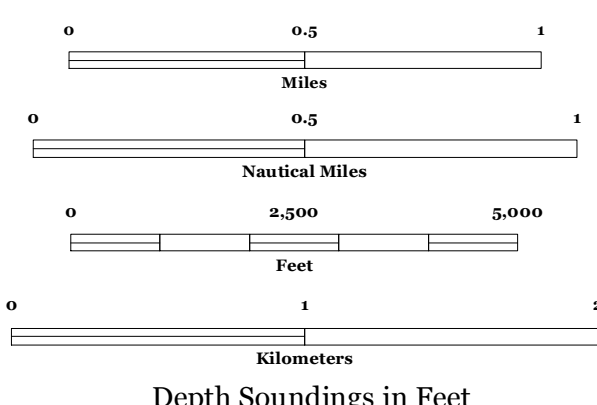
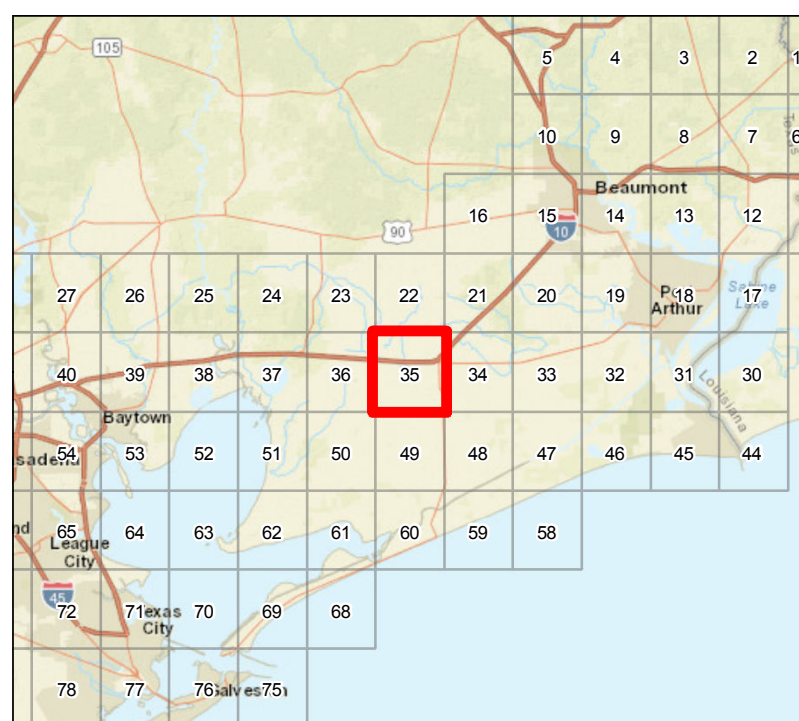
(MONROE CITY, p.36)

(HAMSHIRE, p.34)

(STANLIND RESERVOIR, p.49)



Oil Spill Planning and Response Atlas



Human Use Features

Map Base Layers

Species Icons Within Map Quad

ENVIRONMENTAL SENSITIVITY INDEX

- Interstate Highway
- State Highway
- Railroads
- Airport Runways
- Road
- Exposed Lake Shore
- Freshwater Marshes
- Swamps and Flooded Woodlands
- Willow Thickets
- Lake / Pond
- Perennial River
- County Boundary

- 10D Mangroves and Woody Vegetation
- 10C Freshwater Swamps
- 10B Freshwater Marshes
- 10A Salt and Brackish Water Marshes
- 9 Sheltered Tidal Flats
- 8C Sheltered Rocky/Karst Shores
- 8D Sheltered Scarp
- 8B Sheltered Riprap Structures
- 8A Sheltered Solid Manmade Structures
- 7 Exposed Tidal Flats
- 6B Exposed Riprap Structures
- 6A Gravel or Shell Beaches
- 5 Mixed Sand and Gravel or Shell Beaches
- 4 Coarse-Grained Sand Beaches
- 3B Scarp and Steep Slopes in Sand
- 3A Fine-Grained Sand Beaches
- 2B Wave-Cut Clay Platforms
- 2A Scarp and Steep Slopes in Clay
- 1 Exposed Walls and Other Solid Structures

Priority Protection Areas

The Texas General Land Office makes no representations or warranties regarding the accuracy or completeness of the information depicted on this map or the data from which it was produced. This map is not suitable for navigational purposes and does not purport to depict boundaries of private and public land.