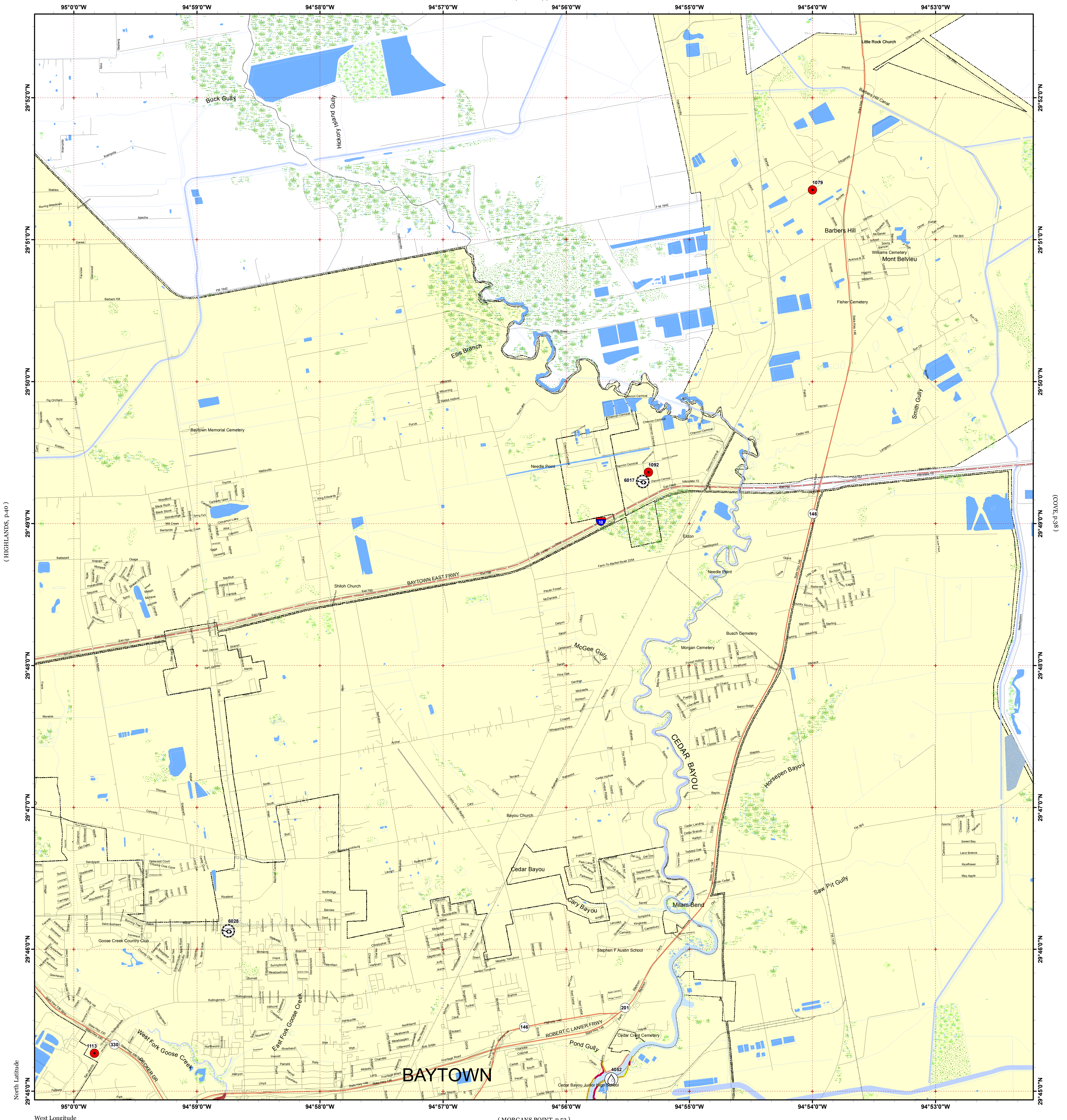


MONT BELVIEU

(SHEEKS, p.26)

[Click Here or Scroll Down for Associated Map Data](#)

Click on the Geographic Response Plan Target to View the ICS Form



(HIGHLANDS, p.40)

(COVE, p.38)

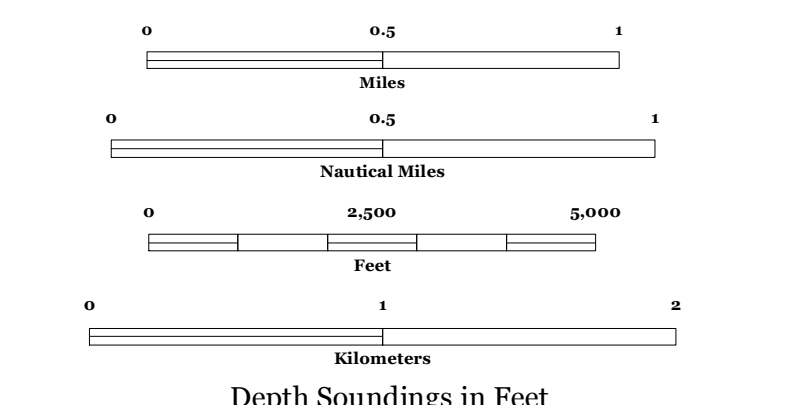
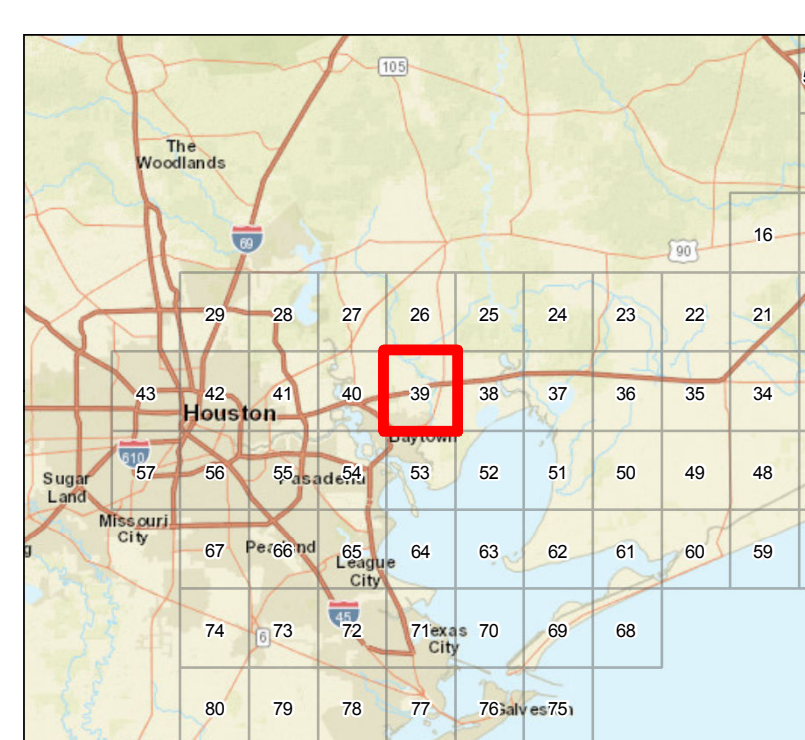
North Latitude
West Longitude

(MORGANS POINT, p.53)



Oil Spill Planning and Response Atlas
2016

The Texas General Land Office makes no representations or warranties regarding the accuracy or completeness of the information depicted on this map or the data from which it was produced. This map is not suitable for navigational purposes and does not purport to depict boundaries of private and public land.



- ### Human Use Features
- Facility
 - Helipoint
 - Water Intake
 - Geographic Response Plan

Priority Protection Areas

- ### Map Base Layers
- Interstate Highway
 - State Highway
 - Railroads
 - Airport Runways
 - Road
 - Bays
 - Salt and Brackish Marshes
 - Beach or Tidal Flat
 - Freshwater Marshes
 - Swamps and Flooded Woodlands
 - Willow Thickets
 - Lake / Pond
 - Perennial River
 - County Boundary
 - City Limits

- ### Species Icons Within Map Quad
- Benthic Marine
 - Cephalopod
 - Crab
 - Shrimp
 - Fish
 - Mammal T/E

ENVIRONMENTAL SENSITIVITY INDEX

- 10D Mangroves and Woody Vegetation
- 10C Freshwater Swamps
- 10B Freshwater Marshes
- 10A Salt and Brackish Water Marshes
- 9 Sheltered Tidal Flats
- 8C Sheltered Rocky/Karst Shores
- 8D Sheltered Scarp
- 8B Sheltered Riprap Structures
- 8A Sheltered Solid Manmade Structures
- 7 Exposed Tidal Flats
- 6B Exposed Riprap Structures
- 6A Gravel or Shell Beaches
- 5 Mixed Sand and Gravel or Shell Beaches
- 4 Coarse-Grained Sand Beaches
- 3B Scarp and Steep Slopes in Sand
- 3A Fine-Grained Sand Beaches
- 2B Wave-Cut Clay Platforms
- 2A Scarp and Steep Slopes in Clay
- 1 Exposed Walls and Other Solid Structures

Quadrant: MONT BELVIEU

Map # :39

Biological Information for this quadrant represents known concentration areas of occurrence.

Biological Resources

Fish

RARNUM	NAME	S	F	T	E	CONC	J	F	M	A	M	J	J	A	S	O	N	D	Spawning	Eggs	Larvae	Juveniles	Adults
0483	Tarpon					RARE			X	X	X	X	X	X	X	X	X	X	-	-	-	MAR-NOV	-
0504	Gizzard shad					COMMON	X	X	X	X	X	X	X	X	X	X	X	X	-	-	-	-	JAN-DEC
	Atlantic croaker					HIGHLY-ABUNDANT	X	X	X	X	X	X	X	X	X	X	X	X	-	-	JAN-JUN	JAN-DEC	JAN-DEC
	Bay anchovy					HIGHLY-ABUNDANT	X	X	X	X	X	X	X	X	X	X	X	X	MAR-NOV	MAR-NOV	MAR-NOV	JAN-DEC	JAN-DEC
	Black drum					COMMON	X	X	X	X	X	X	X	X	X	X	X	X	-	-	-	JAN-DEC	JAN-DEC
	Gafftopsail catfish					COMMON			X	X	X	X	X	X	X	X			APR-MAY	-	-	APR-OCT	MAR-OCT
	Gulf menhaden					HIGHLY-ABUNDANT	X	X	X	X	X	X	X	X	X	X	X	X	-	-	-	JAN-DEC	JAN-DEC
	Hardhead catfish					ABUNDANT	X	X	X	X	X	X	X	X	X	X	X	X	MAY-AUG	MAY-SEP	MAY-SEP	MAY-OCT	JAN-DEC
	Pinfish					RARE				X	X	X	X	X					-	-	-	APR-AUG	-
	Red drum					COMMON	X	X	X	X	X	X	X	X	X	X	X	X	-	-	SEP-NOV	JAN-DEC	JAN-DEC
	Sand seatrout					COMMON	X	X	X	X	X	X	X	X	X	X	X	X	-	-	-	JAN-DEC	JAN-DEC
	Sheepshead					COMMON	X	X	X	X	X	X	X	X	X	X	X	X	-	-	-	JAN-DEC	JAN-DEC
	Southern flounder					ABUNDANT	X	X	X	X	X	X	X	X	X	X	X	X	-	-	-	JAN-DEC	JAN-DEC
	Southern kingfish					COMMON					X	X	X	X	X	X	X		-	-	-	MAY-NOV	-
	Spot					HIGHLY-ABUNDANT	X	X	X	X	X	X	X	X	X	X	X	X	-	-	-	MAR-SEP	JAN-DEC
	Spotted seatrout					COMMON	X	X	X	X	X	X	X	X	X	X	X	X	APR-OCT	APR-OCT	APR-OCT	AUG-NOV	JAN-DEC
	Striped mullet					COMMON	X	X	X	X	X	X	X	X	X	X	X	X	-	-	-	JAN-DEC	JAN-DEC
	Tarpon					RARE			X	X	X	X	X	X	X	X	X		-	-	-	MAR-NOV	-
	White mullet					COMMON					X	X	X	X	X				-	-	-	JUN-OCT	-
	Gulf killifish					COMMON	X	X	X	X	X	X	X	X	X	X	X	X	MAR-SEP	MAR-SEP	MAR-OCT	JAN-DEC	JAN-DEC
	Silver perch					COMMON	X	X	X	X	X	X	X	X	X	X	X	X	MAY-SEP	MAY-SEP	MAY-SEP	OCT-MAR*	JAN-DEC
	Silversides					COMMON	X	X	X	X	X	X	X	X	X	X	X	X	MAR-AUG	MAR-AUG	MAR-AUG	JAN-DEC	JAN-DEC
	Atlantic spadefish					RARE								X	X	X			-	-	-	AUG-OCT	-
	Bay whiff					RARE	X	X	X	X	X	X	X	X	X	X	X	X	-	-	-	APR-APR	JAN-DEC
	Atlantic bumper					COMMON								X	X	X			-	-	-	-	AUG-OCT
	Crevalle jack					COMMON			X	X	X	X	X	X	X	X	X		-	-	-	MAR-NOV	SEP-NOV
	Gulf butterfish					RARE	X	X	X	X							X		-	-	-	-	-
	Spanish mackerel					COMMON					X	X	X	X	X				-	-	-	JUN-OCT	JUN-OCT

Invertebrate

RARNUM	NAME	S	F	T	E	CONC	J	F	M	A	M	J	J	A	S	O	N	D	Spawning	Eggs	Larvae	Juveniles	Adults
0662	Brief squid					COMMON			X	X	X	X	X	X	X	X	X	X	MAR-DEC	MAR-DEC	MAR-DEC	MAR-DEC	MAR-DEC
	Blue crab					ABUNDANT	X	X	X	X	X	X	X	X	X	X	X	X	MAR-OCT	MAR-OCT	MAR-NOV	JAN-DEC	JAN-DEC
	Lesser blue crab					COMMON						X	X	X	X	X	X		-	-	-	JUL-OCT	SEP-DEC
	Brown shrimp					ABUNDANT	X	X	X	X	X	X	X	X	X	X	X	X	-	-	FEB-APR	APR-JAN	-
	Grass shrimp					ABUNDANT	X	X	X	X	X	X	X	X	X	X	X	X	JAN-DEC	JAN-DEC	JAN-DEC	JAN-DEC	JAN-DEC
	White shrimp					ABUNDANT	X	X	X	X	X	X	X	X	X	X	X	X	-	-	JUN-OCT	JUN-DEC	JAN-DEC

Marine Mammal

RARNUM	NAME	S	F	T	E	CONC	J	F	M	A	M	J	J	A	S	O	N	D	Mating	Calving	Pupping	Molting
0739	West Indian manatee	S/F	E/E			VERY-RARE						X	X	X					-	-	-	-

Human Use Resources

Facility	RARNUM	NAME	CONTACT	CONTACT INFO
	1079	P12 Pipeline	Brad Widener	877-839-7473
	1092	Chevron Phillips Chemical Company LP, Cedar Bayou Plant	Jerome Jarboe	281-421-6500
	1113	Enterprise Refined Products Baytown Area Pipelines	Aaron Schindler	800-530-1050
Heliport	RARNUM	NAME	CONTACT	CONTACT INFO
	6017	CHEVRON CHEMICAL CO	TA98	BAYTOWN, TX 77522
	6028	SAN JACINTO METHODIST HOSPITAL	TA20	BAYTOWN, TX 77521
Water Intake	RARNUM	NAME	CONTACT	CONTACT INFO
	4052	HOUSTON LIGHTING & POWER CO.		