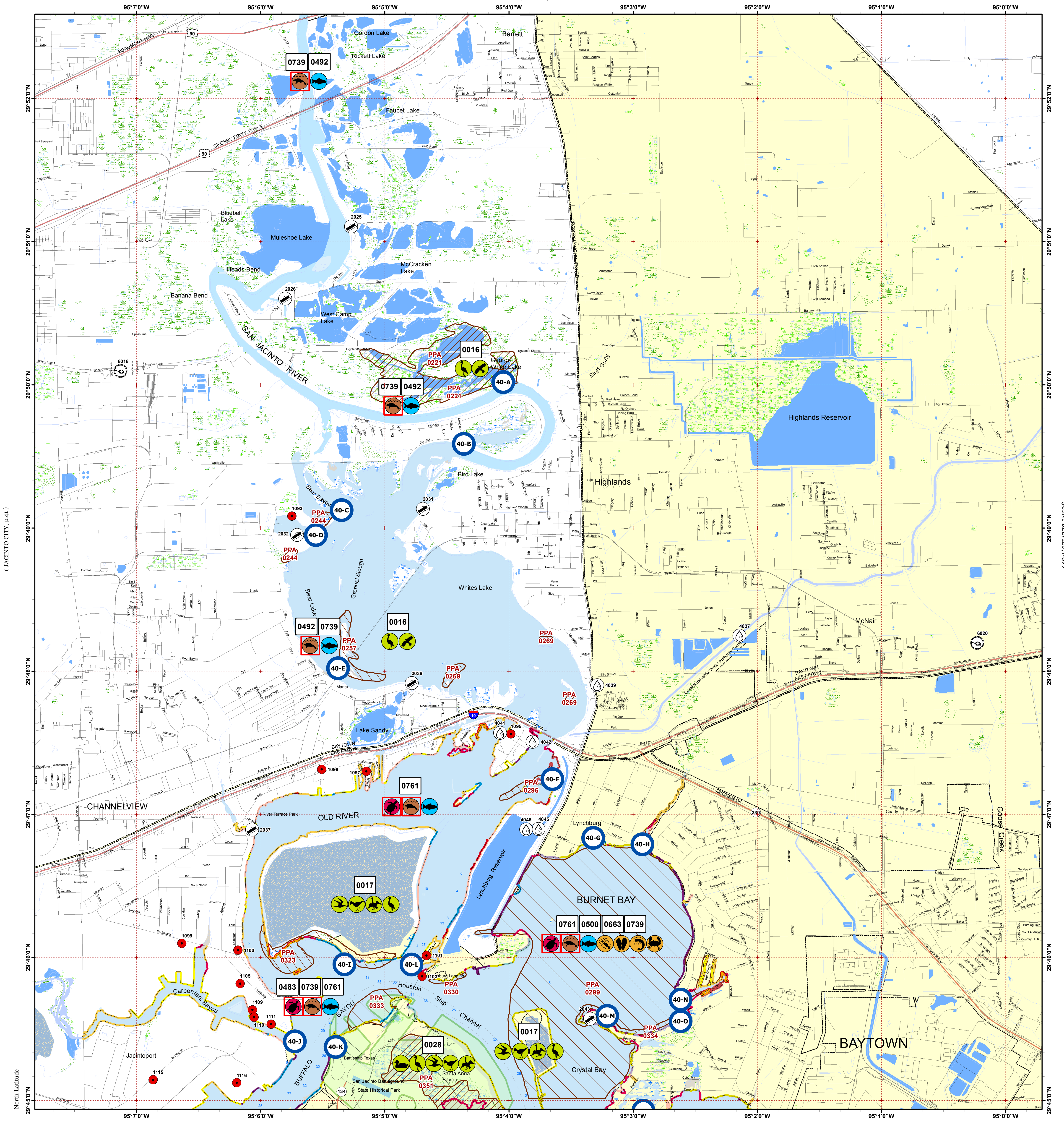


HIGHLANDS

(CROSBY, p.27)

Click Here or Scroll Down for Associated Map Data

Click on the Geographic Response Plan Target to View the ICS Form

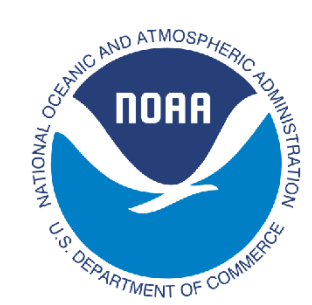


(JACINTO CITY, p.41)

(MONT BELVIEU, p.39)

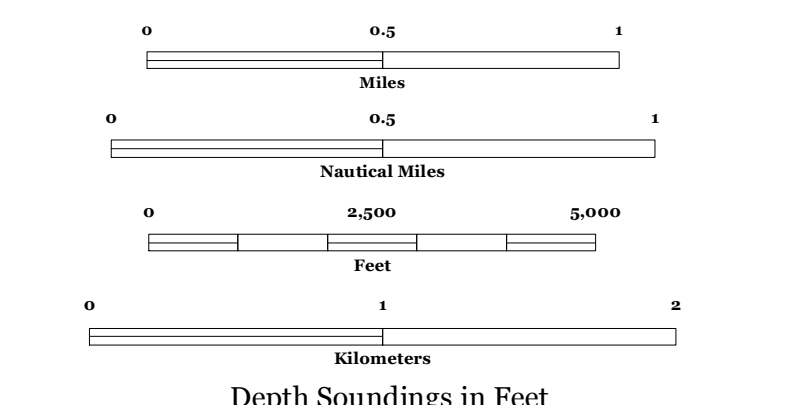
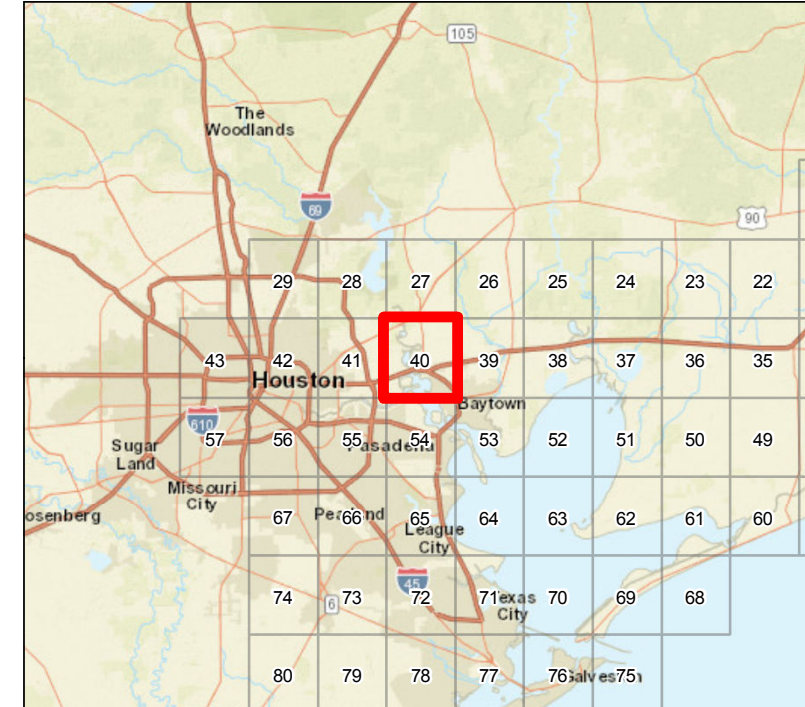
West Longitude

(LA PORTE, p.54)



Oil Spill Planning and Response Atlas 2016

The Texas General Land Office makes no representations or warranties regarding the accuracy or completeness of the information depicted on this map or the data from which it was produced. This map is not suitable for navigational purposes and does not purport to depict boundaries of private and public land.



Human Use Features

- Boat Ramp
- Facility
- Heliport
- Water Intake
- Geographic Response Plan

Map Base Layers

- Interstate Highway
- State Highway
- US Highway
- Railroads
- Road
- GIWW
- State Parks/WMA's
- Bays
- Salt and Brackish Marshes
- Intertidal Scrub/Shrub
- Beach or Tidal Flat
- Exposed Lake Shore
- Freshwater Marshes
- Swamps and Flooded Woodlands
- Willow Thickets
- Lake / Pond
- Tidally Influenced River
- Perennial River
- County Boundary
- City Limits

- ### Priority Protection Areas
- HIGH
 - MEDIUM
 - LOW

Species Icons Within Map Quad

- Turtle T/E
- Mammal T/E
- Benthic Marine
- Bivalve
- Crab
- Shrimp
- Fish
- Diving Bird
- Gull/Tern
- Raptor
- Shorebird
- Wading
- Waterfowl

ENVIRONMENTAL SENSITIVITY INDEX

- 10D Mangroves and Woody Vegetation
- 10C Freshwater Swamps
- 10B Freshwater Marshes
- 10A Salt and Brackish Water Marshes
- 9 Sheltered Tidal Flats
- 8C Sheltered Rocky/Karst Shores
- 8D Sheltered Scarps
- 8B Sheltered Riprap Structures
- 8A Sheltered Solid Manmade Structures
- 7 Exposed Tidal Flats
- 6B Exposed Riprap Structures
- 6A Gravel or Shell Beaches
- 5 Mixed Sand and Gravel or Shell Beaches
- 4 Coarse-Grained Sand Beaches
- 3B Scarps and Steep Slopes in Sand
- 3A Fine-Grained Sand Beaches
- 2B Wave-Cut Clay Platforms
- 2A Scarps and Steep Slopes in Clay
- 1 Exposed Walls and Other Solid Structures

Quadrant: HIGHLANDS

Map # :40

Biological Information for this quadrant represents known concentration areas of occurrence.

Habitat Priority Protection Areas

| PPA ID | PRIORITY | POLY DESCRIPTION | BIRDS RANK | BIRDS DESCRIPTION | FISH RANK | FISH DESCRIPTION | WETLANDS RANK | WETLANDS DESCRIPTION |
|---------|----------|--|------------|------------------------------|-----------|---|---------------|--|
| PPA0221 | HIGH | George White Lake | MEDIUM | Egrets, herons, osprey | | | HIGH | Good quality fresh to intermediate marsh |
| PPA0244 | MEDIUM | Fringe marshes along west shore of San Jacinto River | | | HIGH | Nursery | MEDIUM | Eroding and subsiding fresh marsh (arrowhead) |
| PPA0257 | MEDIUM | South shore of Old River meander island | MEDIUM | Osprey perch, feeding area | HIGH | Nursery | | |
| PPA0269 | MEDIUM | Fringe marshes along San Jacinto River | | | HIGH | Nursery | MEDIUM | Marshhay cordgrass on spit |
| PPA0296 | MEDIUM | Fringe marshes along San Jacinto River | | | HIGH | Nursery | MEDIUM | |
| PPA0299 | LOW | Burnet and Crystal Bays | | | HIGH | Nursery; shrimp, crab concentrations in deeper water; juvenile seatrout | | |
| PPA0323 | MEDIUM | South shore of Old River meander island | MEDIUM | | MEDIUM | Nursery | HIGH | Intertidal flat, brackish fringe marsh (smooth cordgrass, marsh-elder) |
| PPA0330 | LOW | Marsh east of Lynchburg Landing | | | LOW | Nursery | MEDIUM | Thin fringe of smooth cordgrass |
| PPA0333 | LOW | Mouth of Buffalo Bayou | | | HIGH | Nursery | | |
| PPA0334 | MEDIUM | South shore, Burnet Bay | | | HIGH | Nursery | HIGH | Thin fringe of smooth cordgrass |
| PPA0351 | HIGH | Santa Anna Bayou marsh; part of San Jacinto State Park | MEDIUM | Year-round bird feeding area | HIGH | Nursery (shrimp, crab) | | Some good quality low marsh and subsided areas |

Biological Resources

Bird

| RARNUM | NAME | S | F | T | E | CONC | J | F | M | A | M | J | J | A | S | O | N | D | Nesting | Migrating | Molting |
|--------|--------------|---|---|---|---|------|---|---|---|---|---|---|---|---|---|---|---|---|---------|-----------|---------|
| 0016 | Osprey | | | | | - | X | X | X | X | X | | | | X | X | X | X | - | - | - |
| | Wading birds | | | | | - | X | X | X | X | X | X | X | X | X | X | X | X | - | - | - |
| 0017 | Pelicans | | | | | - | X | X | X | X | X | X | X | X | X | X | X | X | - | - | - |
| | Terns | | | | | - | X | X | X | X | X | X | X | X | X | X | X | X | - | - | - |
| | Shorebirds | | | | | - | X | X | X | X | X | | X | X | X | X | X | X | - | - | - |
| | Wading birds | | | | | - | X | X | X | X | X | X | X | X | X | X | X | X | - | - | - |
| 0028 | Grebes | | | | | - | X | X | X | X | X | | | | X | X | X | X | - | - | - |
| | Loons | | | | | - | X | X | X | X | X | | | | X | X | X | X | - | - | - |
| | Gulls | | | | | - | X | X | X | X | X | X | X | X | X | X | X | X | - | - | - |
| | Terns | | | | | - | X | X | X | X | X | X | X | X | X | X | X | X | - | - | - |
| | Shorebirds | | | | | - | X | X | X | X | X | | X | X | X | X | X | X | - | - | - |
| | Marsh birds | | | | | - | X | X | X | X | X | X | X | X | X | X | X | X | - | - | - |
| | Wading birds | | | | | - | X | X | X | X | X | X | X | X | X | X | X | X | - | - | - |
| | Waterfowl | | | | | - | X | X | X | X | X | X | X | X | X | X | X | X | - | - | - |

Fish

| RARNUM | NAME | S | F | T | E | CONC | J | F | M | A | M | J | J | A | S | O | N | D | Spawning | Eggs | Larvae | Juveniles | Adults | | | |
|----------------|---------------------|---|---|---|--------|-----------------|---|---|---|---|---|---|---|---|---|---|---|---|----------|---------|---------|-----------|---------|---------|----------|---------|
| 0483 | Tarpon | | | | | RARE | | | X | X | X | X | X | X | X | X | X | X | - | - | - | MAR-NOV | - | | | |
| 0491 | Rainwater killifish | | | | | - | X | X | X | X | X | X | X | X | X | X | X | X | FEB-JUN | - | - | - | - | | | |
| | Sailfin molly | | | | | - | X | X | X | X | X | X | X | X | X | X | X | X | - | - | - | - | - | | | |
| | Tarpon | | | | | RARE | | | X | X | X | X | X | X | X | X | X | X | - | - | - | MAR-NOV | - | | | |
| | Blue catfish | | | | | - | X | X | X | X | X | X | X | X | X | X | X | X | APR-MAY | - | - | - | - | JAN-DEC | | |
| | Smallmouth buffalo | | | | | - | X | X | X | X | X | X | X | X | X | X | X | X | - | - | - | - | - | JAN-DEC | | |
| 0492 | Rainwater killifish | | | | | - | X | X | X | X | X | X | X | X | X | X | X | X | FEB-JUN | - | - | - | - | - | | |
| | Sailfin molly | | | | | - | X | X | X | X | X | X | X | X | X | X | X | X | - | - | - | - | - | - | | |
| | Tarpon | | | | | RARE | | | X | X | X | X | X | X | X | X | X | X | - | - | - | MAR-NOV | - | | | |
| | Blue catfish | | | | | - | X | X | X | X | X | X | X | X | X | X | X | X | APR-MAY | - | - | - | - | - | JAN-DEC | |
| | Longnose gar | | | | | - | X | X | X | X | X | X | X | X | X | X | X | X | - | - | - | - | - | - | | |
| | Smallmouth buffalo | | | | | - | X | X | X | X | X | X | X | X | X | X | X | X | - | - | - | - | - | - | JAN-DEC | |
| 0500 | Gizzard shad | | | | | COMMON | X | X | X | X | X | X | X | X | X | X | X | X | - | - | - | - | - | JAN-DEC | | |
| | Atlantic croaker | | | | | HIGHLY-ABUNDANT | X | X | X | X | X | X | X | X | X | X | X | X | - | - | - | JAN-JUN | JAN-DEC | JAN-DEC | | |
| | Bay anchovy | | | | | COMMON | X | X | X | X | X | X | X | X | X | X | X | X | MAR-NOV | MAR-NOV | MAR-NOV | JAN-NOV | JAN-DEC | JAN-DEC | | |
| | Black drum | | | | | COMMON | X | X | X | X | X | X | X | X | X | X | X | X | - | - | - | JAN-DEC | JAN-DEC | JAN-DEC | | |
| | Gafftopsail catfish | | | | | COMMON | | | X | X | X | X | X | X | X | X | X | X | APR-MAY | - | - | - | APR-NOV | APR-NOV | | |
| | Gulf menhaden | | | | | HIGHLY-ABUNDANT | X | X | X | X | X | X | X | X | X | X | X | X | - | - | - | - | - | JAN-DEC | JAN-DEC | |
| | Hardhead catfish | | | | | ABUNDANT | X | X | X | X | X | X | X | X | X | X | X | X | MAY-AUG | MAY-SEP | MAY-SEP | JUL-SEP | JAN-DEC | JAN-DEC | | |
| | Pinfish | | | | | COMMON | | | X | X | X | X | X | X | | | | | - | - | - | - | - | APR-AUG | - | |
| | Red drum | | | | | COMMON | X | X | X | X | X | X | X | X | X | X | X | X | X | - | - | - | SEP-NOV | JAN-DEC | JAN-DEC | |
| | Sand seatrout | | | | | COMMON | X | X | X | X | X | X | X | X | X | X | X | X | X | - | - | - | - | - | JAN-DEC | JAN-DEC |
| | Sheepshead | | | | | COMMON | X | X | X | X | X | X | X | X | X | X | X | X | X | - | - | - | - | - | JUL-APR* | JAN-DEC |
| | Southern flounder | | | | | ABUNDANT | X | X | X | X | X | X | X | X | X | X | X | X | X | - | - | - | - | - | JAN-DEC | JAN-DEC |
| | Southern kingfish | | | | | RARE | | | | | | | X | X | X | | | | - | - | - | - | - | AUG-OCT | - | |
| | Spot | | | | | HIGHLY-ABUNDANT | X | X | X | X | X | X | X | X | X | X | X | X | X | - | - | - | - | - | FEB-NOV | JAN-DEC |
| | Spotted seatrout | | | | | COMMON | X | X | X | X | X | X | X | X | X | X | X | X | X | APR-OCT | APR-OCT | APR-OCT | SEP-NOV | JAN-DEC | JAN-DEC | |
| | Striped mullet | | | | | COMMON | X | X | X | X | X | X | X | X | X | X | X | X | X | - | - | - | - | - | JAN-DEC | JAN-DEC |
| Tarpon | | | | | RARE | | | X | X | X | X | X | X | X | X | X | X | X | - | - | - | - | - | MAR-NOV | - | |
| White mullet | | | | | COMMON | | | | | X | X | X | X | X | X | X | X | X | - | - | - | - | - | JUN-NOV | - | |
| Gulf killifish | | | | | RARE | X | X | X | X | X | X | X | X | X | X | X | X | X | MAR-SEP | MAR-SEP | MAR-SEP | MAR-OCT | JAN-DEC | JAN-DEC | | |
| Silver perch | | | | | RARE | X | X | X | X | X | X | X | X | X | X | X | X | X | MAY-SEP | MAY-SEP | MAY-SEP | MAY-SEP | NOV-NOV | JAN-DEC | JAN-DEC | |
| Silversides | | | | | COMMON | X | X | X | X | X | X | X | X | X | X | X | X | X | MAR-AUG | MAR-AUG | MAR-AUG | MAR-AUG | JAN-DEC | JAN-DEC | JAN-DEC | |
| Alligator gar | | | | | COMMON | X | X | X | X | X | X | X | X | X | X | X | X | X | - | - | - | - | - | JAN-DEC | JAN-DEC | |
| Blue catfish | | | | | COMMON | X | X | X | X | X | X | X | X | X | X | X | X | X | - | - | - | - | - | JAN-DEC | JAN-DEC | |

Fish

| RARNUM | NAME | S | F | T | E | CONC | J | F | M | A | M | J | J | A | S | O | N | D | Spawning | Eggs | Larvae | Juveniles | Adults |
|--------|--------------------|---|---|---|---|-----------------|---|---|---|---|---|---|---|---|---|---|---|---|----------|---------|--------|-----------|---------|
| | Smallmouth buffalo | | | | | HIGHLY-ABUNDANT | X | X | X | X | X | X | X | X | X | X | X | X | - | - | - | - | JAN-DEC |
| | Spotted gar | | | | | ABUNDANT | X | X | X | X | X | X | X | X | X | X | X | X | APR-MAY | APR-MAY | - | JAN-DEC | JAN-DEC |
| | Bay whiff | | | | | COMMON | X | X | X | X | X | X | X | X | X | X | X | X | - | - | - | APR-SEP | JAN-DEC |
| | Spotfin mojarra | | | | | RARE | | | | | | X | X | | | | | | - | - | - | - | - |
| | Crevalle jack | | | | | COMMON | | | X | X | X | X | X | X | X | X | X | | - | - | - | MAR-NOV | SEP-NOV |
| | Spanish mackerel | | | | | RARE | | | | | | | | | X | X | X | | - | - | - | SEP-NOV | SEP-NOV |

Invertebrate

| RARNUM | NAME | S | F | T | E | CONC | J | F | M | A | M | J | J | A | S | O | N | D | Spawning | Eggs | Larvae | Juveniles | Adults |
|--------|------------------|---|---|---|---|-----------------|---|---|---|---|---|---|---|---|---|---|---|---|----------|---------|---------|-----------|---------|
| 0663 | Atlantic rangia | | | | | ABUNDANT | X | X | X | X | X | X | X | X | X | X | X | X | MAR-OCT | - | MAR-OCT | JAN-DEC | JAN-DEC |
| | Blue crab | | | | | HIGHLY-ABUNDANT | X | X | X | X | X | X | X | X | X | X | X | X | MAR-OCT | MAR-OCT | MAR-NOV | JAN-DEC | JAN-DEC |
| | Lesser blue crab | | | | | COMMON | | | | X | X | X | X | X | X | X | | | - | - | - | APR-OCT | - |
| | Brown shrimp | | | | | ABUNDANT | | X | X | X | X | X | X | X | X | X | X | | - | - | FEB-APR | APR-NOV | - |
| | Grass shrimp | | | | | ABUNDANT | X | X | X | X | X | X | X | X | X | X | X | X | JAN-DEC | JAN-DEC | JAN-DEC | JAN-DEC | JAN-DEC |
| | White shrimp | | | | | HIGHLY-ABUNDANT | X | X | X | X | X | X | X | X | X | X | X | X | - | - | APR-OCT | APR-DEC | JAN-DEC |

Marine Mammal

| RARNUM | NAME | S | F | T | E | CONC | J | F | M | A | M | J | J | A | S | O | N | D | Mating | Calving | Pupping | Molting |
|--------|---------------------|-----|---|---|-----|-----------|---|---|---|---|---|---|---|---|---|---|---|---|--------|---------|---------|---------|
| 0739 | West Indian manatee | S/F | | | E/E | VERY-RARE | | | | | | | X | X | X | | | | - | - | - | - |

Reptile

| RARNUM | NAME | S | F | T | E | CONC | J | F | M | A | M | J | J | A | S | O | N | D | Nesting | Hatching | Interesting | Juveniles | Adults |
|--------|--------------------------|-----|---|---|-----|--------|---|---|---|---|---|---|---|---|---|---|---|---|---------|----------|-------------|-----------|--------|
| 0761 | Kemp's ridley sea turtle | S/F | | | E/E | COMMON | | | | X | X | X | X | X | X | X | X | | - | - | - | APR-NOV | - |

Human Use Resources

| Category | RARNUM | NAME | CONTACT | CONTACT I NFO |
|--------------|--------|---|------------------|-----------------------------|
| Boat Ramp | 2025 | Bass Hole Lakes | | harrissanjac@bassholelakes |
| | 2026 | Banana Bend Park | | harrissanjac@bananabend |
| | 2031 | Sassy Lady Tugboat Annie's | | harrissanjac@sassylady |
| | 2032 | Lyondell/Equistar | | |
| | 2036 | Riverside Inn Marina | | harrissanjac@riversideinn |
| | 2037 | River Terrace Park | | harrissanjac@riverterracepk |
| | 2043 | Baytown Nature Center | | harrissanjac@baytownnature |
| Facility | 1093 | Equistar Chemicals, L.P. | David Gray | 281-452-8345 |
| | 1095 | Glendale Boat Works, Inc. | Mel Cooper | 281-452-7146 |
| | 1096 | Sneed Shipbuilding, Inc. | Christian Minor | 281-862-2266 |
| | 1097 | Pelican Asphalt Co. LLC | Reggie Roberts | 713-817-2683 |
| | 1099 | SBS Facility | Scott Burnett | 713-539-8227 |
| | 1100 | K-Solv, LP. | Gary Weatherly | |
| | 1101 | Channel Shipyard Co. Inc. | Alan Bonds | 281-424-1581 |
| | 1103 | Harris County Precinct Two Lynchburg Ferry | David Starett | 713-455-0062 |
| | 1105 | Targa Terminals LLC--Channelview | Clay Riassetto | 281-457-1348 |
| | 1109 | San Jacinto Barge Repair, Inc. | Kyle Steger | 281-785-3933 |
| | 1110 | ACL Transportation Services, LLC | Jerry Torok | 832-20504892 |
| | 1111 | O'Rourke Marine Services, LP, LLP | Rusty Gallagher | 281-695-1005 |
| | 1115 | Kirby Inland Marine Channelview Barge Cleaning Facility | Steven Caruselle | 281-960-9150 |
| Heliport | 6016 | LPC | TA14 | CHANNELVIEW, TX 77530 |
| | 6020 | RED BARN | 26TA | PASADENA, TX 77503 |
| | 4037 | BAYTOWN AREA WATER AUTHORITY | | |
| Water Intake | 4039 | WESTERN TOWING CO | | |
| | 4041 | COOPERS MARINE SER INC' | | |
| | 4042 | SOUTHWESTERN BARGE FLEET SER. | | |
| | 4045 | CITY OF HOUSTON | | |
| | 4046 | | | |

| | | |
|------------------|-----------------------------------|----------------------------|
| 1. Incident Name | 2. Operational Period (Date/Time) | Assignment List ICS 204-OS |
|------------------|-----------------------------------|----------------------------|

| | |
|-----------|-------------------|
| 3. Branch | 4. Division/Group |
|-----------|-------------------|

| | |
|---------------------------|-------|
| 5. Operations Personnel | |
| Operations Section Chief | _____ |
| Branch Director | _____ |
| Division/Group Supervisor | _____ |

| 6. Resources Assigned This Period | | | | | | "X" Indicates 204a attachment with special instructions |
|-----------------------------------|--------|----------------|--------------|------------------------------|--|---|
| Resource Identifier | Leader | Contact Info # | # of Persons | Reporting Info/Notes/Remarks | | |
| | | | | | | |
| | | | | | | |
| | | | | | | |
| | | | | | | |
| | | | | | | |
| | | | | | | |

| |
|----------------|
| 7. Assignments |
|----------------|

SAFETY NOTE: Very shallow water near the shoreline, airboats may be needed. Numerous tree stumps are located on the San Jacinto River. During periods of heavy rainfall the river current can be swift.

| | | | | |
|-------------------------|---------------------------|---------------------------|----------------------------|----------------------|
| 8. Site Number: 40-A | 9. Quad Name Highlands | 10. NOAA Chart # 11329 | 11. GLO Atlas Page # 40 | 12. County Harris |
|-------------------------|---------------------------|---------------------------|----------------------------|----------------------|

| | | | | |
|--|--|--|-------------------------------------|-----|
| 13. Site Information: George White Lake Entrance to George White Lake. George White Lake is a sensitive marsh area off of the San Jacinto River. | | | 14. Latitude From: 29 49' 59.4"N | To: |
| | | | 15. Longitude From: 95 3' 55"W | To: |

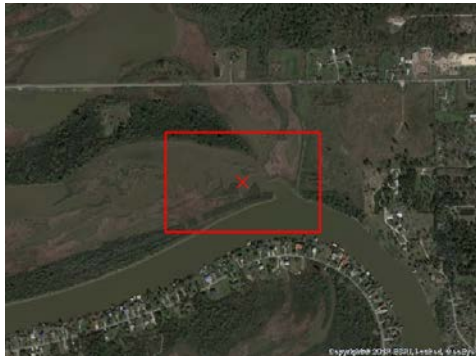
| | | |
|---|----------------------------------|-----------------------------------|
| 16. Closest Boat Ramp Riverside Marina | 17. Distance From Ramp 3.0 NM | 18. Boat Type Flat Bottom Boat |
|---|----------------------------------|-----------------------------------|

| | | |
|--|--|--|
| 19. Directions From Local Sector 610N to I-10E to Lynchburg Rd (Main St.). Go North to Highland Shores Dr. Turn Right. Marsh will be on the left. | | 20. Closest Airport Baytown Airport (HPY) |
| | | 21. Closest Helo Spot Baytown Airport (HPY) |

| | | |
|--|-----------------------|--------------------------------|
| 22. Trustee/Contact Numbers | 23. Resources at Risk | 24. Width of inlet 300' in ft. |
| USCG: (281) 464-4800 RRC: (713) 869-5001 | Atlas Priority Medium | 25. Water depth in ft. 6' |
| USCG DUTY: (800) 424-4800 TPWD: (281) 842-8100 | Environmental Medium | 26. Current Slow |
| TGLO: (800) 832-8224 NRDA: (512) 463 -9309 | Economic N/A | 27. No. of Personnel 2 |
| TCEQ: (713) 767-3563 USFWS: (281) 286-8282 | | |

| |
|---|
| 25. Booming Strategy Recommendation Boom across entrance to prevent movement of oil into the marsh. |
|---|

AERIAL PHOTO



ON SITE PHOTO



| | | |
|------------------|---------------------------------------|------------------------|
| 29. Prepared By: | 30. Reviewed by (PSC) | 31. Reviewed by (OSC): |
| Assignment List | ICS 204 OS (Geographic Response Plan) | Project Updated: |

"Response strategies may need to be modified to account for changes due to seasonality, weather conditions, spill characteristics, tides and any other considerations."

| | | |
|------------------|-----------------------------------|----------------------------|
| 1. Incident Name | 2. Operational Period (Date/Time) | Assignment List ICS 204-OS |
|------------------|-----------------------------------|----------------------------|

| | |
|-----------|-------------------|
| 3. Branch | 4. Division/Group |
|-----------|-------------------|

| | |
|---------------------------|-------|
| 5. Operations Personnel | |
| Operations Section Chief | _____ |
| Branch Director | _____ |
| Division/Group Supervisor | _____ |

| 6. Resources Assigned This Period | | | | | "X" Indicates 204a attachment with special instructions |
|-----------------------------------|--------|----------------|--------------|------------------------------|---|
| Resource Identifier | Leader | Contact Info # | # of Persons | Reporting Info/Notes/Remarks | |
| | | | | | |
| | | | | | |
| | | | | | |
| | | | | | |
| | | | | | |
| | | | | | |

| |
|----------------|
| 7. Assignments |
|----------------|

SAFETY NOTE: Very shallow water near the shoreline, airboats may be needed. Numerous tree stumps are located on the San Jacinto River. During periods of heavy rainfall the river current can be swift.

| | | | | |
|-------------------------|---------------------------|---------------------------|----------------------------|----------------------|
| 8. Site Number: 40-B | 9. Quad Name Highlands | 10. NOAA Chart # 11329 | 11. GLO Atlas Page # 40 | 12. County Harris |
|-------------------------|---------------------------|---------------------------|----------------------------|----------------------|

| | | | | |
|---|--|--|-------------------------------------|-----|
| 13. Site Information: Rio Villa Marsh Entrance to marsh. Marsh complex is a sensitive area off of the San Jacinto River. Concrete walkdown present. | | | 14. Latitude From: 29 49' 34.4"N | To: |
| | | | 15. Longitude From: 95 4' 24.9"W | To: |

| | | |
|---|----------------------------------|-----------------------------------|
| 16. Closest Boat Ramp Riverside Marina | 17. Distance From Ramp 2.5 NM | 18. Boat Type Flat Bottom Boat |
|---|----------------------------------|-----------------------------------|

| | | |
|--|--|--|
| 19. Directions From Local Sector 610N to I-10E to Sheldon Road. North on Sheldon to Wallisville Rd. Turn Right. At Rio Villa Dr. turn left. Proceed to marsh. | | 20. Closest Airport Baytown Airport (HPY) |
| | | 21. Closest Helo Spot Baytown Airport (HPY) |

| | | |
|--|--------------------------|--------------------------------|
| 22. Trustee/Contact Numbers | 23. Resources at Risk | 24. Width of inlet 300' in ft. |
| USCG: (281) 464-4800 RRC: (713) 869-5001 | Atlas Priority Low | 25. Water depth in ft. 6' |
| USCG DUTY: (800) 424-4800 TPWD: (281) 842-8100 | Environmental Low | |
| TGLO: (800) 832-8224 NRDA: (512) 463 -9309 | Economic N/A | 26. Current Slow |
| TCEQ: (713) 767-3563 USFWS: (281) 286-8282 | | 27. No. of Personnel 2 |

| |
|---|
| 25. Booming Strategy Recommendation Boom across entrance to prevent movement of oil into the marsh. |
|---|



| | | |
|------------------|---------------------------------------|------------------------|
| 29. Prepared By: | 30. Reviewed by (PSC) | 31. Reviewed by (OSC): |
| Assignment List | ICS 204 OS (Geographic Response Plan) | Project Updated: |

"Response strategies may need to be modified to account for changes due to seasonality, weather conditions, spill characteristics, tides and any other considerations."

| | | |
|------------------|-----------------------------------|----------------------------|
| 1. Incident Name | 2. Operational Period (Date/Time) | Assignment List ICS 204-OS |
|------------------|-----------------------------------|----------------------------|

| | |
|-----------|-------------------|
| 3. Branch | 4. Division/Group |
|-----------|-------------------|

| | |
|---------------------------|-------|
| 5. Operations Personnel | |
| Operations Section Chief | _____ |
| Branch Director | _____ |
| Division/Group Supervisor | _____ |

6. Resources Assigned This Period "X" Indicates 204a attachment with special instructions

| Resource Identifier | Leader | Contact Info # | # of Persons | Reporting Info/Notes/Remarks |
|---------------------|--------|----------------|--------------|------------------------------|
| | | | | |
| | | | | |
| | | | | |
| | | | | |
| | | | | |
| | | | | |

| |
|----------------|
| 7. Assignments |
|----------------|

SAFETY NOTE: Very shallow water near the shoreline, airboats may be needed. Numerous tree stumps are located on the San Jacinto River. During periods of heavy rainfall the river current can be swift.

| | | | | |
|-------------------------|---------------------------|---------------------------|----------------------------|----------------------|
| 8. Site Number: 40-C | 9. Quad Name Highlands | 10. NOAA Chart # 11329 | 11. GLO Atlas Page # 40 | 12. County Harris |
|-------------------------|---------------------------|---------------------------|----------------------------|----------------------|

| | | | |
|--|-----------------------------------|-----|--|
| 13. Site Information: Bear Bayou Bear Bayou in San Jacinto River. Bear Bayou is a sensitive area just up the river from Lyondell. The bayou is full of stumps. | 14. Latitude From: 29 49' 08"N | To: | |
| | 15. Longitude From: 95 5' 20"W | To: | |

| | | |
|---|----------------------------------|-----------------------------------|
| 16. Closest Boat Ramp Riverside Marina | 17. Distance From Ramp 2.0 NM | 18. Boat Type Flat Bottom Boat |
|---|----------------------------------|-----------------------------------|

| | | |
|--|--|--|
| 19. Directions From Local Sector 610N to I-10E to Sheldon Road. North on Sheldon to Wallisville Rd. Turn Right. Proceed to river. | 20. Closest Airport Baytown Airport (HPY) | 21. Closest Helo Spot Baytown Airport (HPY) |
|--|--|--|

| | | |
|--|--------------------------|---------------------------------|
| 22. Trustee/Contact Numbers | 23. Resources at Risk | 24. Width of inlet 1100' in ft. |
| USCG: (281) 464-4800 RRC: (713) 869-5001 | Atlas Priority Low | 25. Water depth in ft. 2' |
| USCG DUTY: (800) 424-4800 TPWD: (281) 842-8100 | Environmental Low | 26. Current Slow |
| TGLO: (800) 832-8224 NRDA: (512) 463 -9309 | Economic N/A | 27. No. of Personnel 4 |
| TCEQ: (713) 767-3563 USFWS: (281) 286-8282 | | |

| |
|--|
| 25. Booming Strategy Recommendation Boom shallows on west side of river to prevent movement of oil into the bayou. Bear Bayou is very shallow with numerous tree stumps. |
|--|



| | | |
|------------------|---------------------------------------|------------------------|
| 29. Prepared By: | 30. Reviewed by (PSC) | 31. Reviewed by (OSC): |
| Assignment List | ICS 204 OS (Geographic Response Plan) | Project Updated: |

"Response strategies may need to be modified to account for changes due to seasonality, weather conditions, spill characteristics, tides and any other considerations."

| | | |
|------------------|-----------------------------------|----------------------------|
| 1. Incident Name | 2. Operational Period (Date/Time) | Assignment List ICS 204-OS |
|------------------|-----------------------------------|----------------------------|

| | |
|-----------|-------------------|
| 3. Branch | 4. Division/Group |
|-----------|-------------------|

| | |
|---------------------------|-------|
| 5. Operations Personnel | |
| Operations Section Chief | _____ |
| Branch Director | _____ |
| Division/Group Supervisor | _____ |

6. Resources Assigned This Period "X" Indicates 204a attachment with special instructions

| Resource Identifier | Leader | Contact Info # | # of Persons | Reporting Info/Notes/Remarks |
|---------------------|--------|----------------|--------------|------------------------------|
| | | | | |
| | | | | |
| | | | | |
| | | | | |
| | | | | |
| | | | | |

7. Assignments

SAFETY NOTE: Very shallow water near the shoreline, airboats may be needed. Numerous tree stumps are located on the San Jacinto River. During periods of heavy rainfall the river current can be swift.

| | | | | |
|-------------------------|---------------------------|---------------------------|----------------------------|----------------------|
| 8. Site Number: 40-D | 9. Quad Name Highlands | 10. NOAA Chart # 11329 | 11. GLO Atlas Page # 40 | 12. County Harris |
|-------------------------|---------------------------|---------------------------|----------------------------|----------------------|

| | | | |
|---|-------------------------------------|-----|--|
| 13. Site Information: Lyondell Basell Plant docks Entrance to Lyondell Plant on San Jacinto River. This cut leads from the main channel of the San Jacinto River to the Lyondell Plant. | 14. Latitude From: 29 48' 58"N | To: | |
| | 15. Longitude From: 95 5' 34.2"W | To: | |

| | | |
|---|-------------------------------------|-----------------------------------|
| 16. Closest Boat Ramp Riverside Marina | 17. Distance From Ramp 1.5 miles | 18. Boat Type Flat Bottom Boat |
|---|-------------------------------------|-----------------------------------|

| | |
|--|--|
| 19. Directions From Local Sector 610N to I-10E to Sheldon Road. North on Sheldon to Lyondell facility | 20. Closest Airport Baytown Airport (HPY) |
| | 21. Closest Helo Spot Baytown Airport (HPY) |

| | | |
|--|--------------------------|--------------------------------|
| 22. Trustee/Contact Numbers | 23. Resources at Risk | 24. Width of inlet 450' in ft. |
| USCG: (281) 464-4800 RRC: (713) 869-5001 | Atlas Priority Low | 25. Water depth in ft. 15' |
| USCG DUTY: (800) 424-4800 TPWD: (281) 842-8100 | Environmental Low | 26. Current Slow |
| TGLO: (800) 832-8224 NRDA: (512) 463 -9309 | | 27. No. of Personnel 2 |
| TCEQ: (713) 767-3563 USFWS: (281) 286-8282 | Economic High | |

25. Booming Strategy **Recommendation**
Boom across entrance to prevent migration of oil into or out of facility.



| | | |
|------------------|---------------------------------------|------------------------|
| 29. Prepared By: | 30. Reviewed by (PSC) | 31. Reviewed by (OSC): |
| Assignment List | ICS 204 OS (Geographic Response Plan) | Project Updated: |

"Response strategies may need to be modified to account for changes due to seasonality, weather conditions, spill characteristics, tides and any other considerations."

| | | |
|------------------|-----------------------------------|----------------------------|
| 1. Incident Name | 2. Operational Period (Date/Time) | Assignment List ICS 204-OS |
|------------------|-----------------------------------|----------------------------|

| | |
|-----------|-------------------|
| 3. Branch | 4. Division/Group |
|-----------|-------------------|

| | |
|---------------------------|-------|
| 5. Operations Personnel | |
| Operations Section Chief | _____ |
| Branch Director | _____ |
| Division/Group Supervisor | _____ |

| 6. Resources Assigned This Period | | | | | "X" Indicates 204a attachment with special instructions |
|-----------------------------------|--------|----------------|--------------|------------------------------|---|
| Resource Identifier | Leader | Contact Info # | # of Persons | Reporting Info/Notes/Remarks | |
| | | | | | |
| | | | | | |
| | | | | | |
| | | | | | |
| | | | | | |
| | | | | | |

| |
|----------------|
| 7. Assignments |
|----------------|

SAFETY NOTE: Very shallow water near the shoreline, airboats may be needed. Numerous tree stumps are located on the San Jacinto River. During periods of heavy rainfall the river current can be swift.

| | | | | |
|-------------------------|---------------------------|---------------------------|----------------------------|----------------------|
| 8. Site Number: 40-E | 9. Quad Name Highlands | 10. NOAA Chart # 11329 | 11. GLO Atlas Page # 40 | 12. County Harris |
|-------------------------|---------------------------|---------------------------|----------------------------|----------------------|

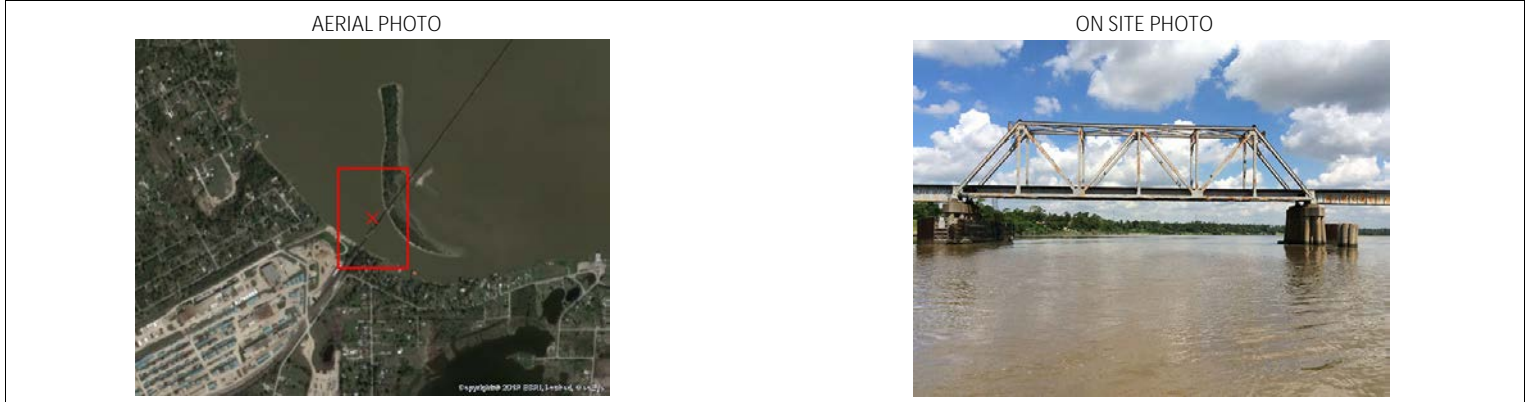
| | | | |
|---|-------------------------------------|-----|--|
| 13. Site Information: San Jacinto River (RR Bridge) RR Bridge above Riverside Marina. This railroad bridge spans the main channel of the San Jacinto River and is a good choke point to prevent product migration downstream. | 14. Latitude From: 29 47' 58.4"N | To: | |
| | 15. Longitude From: 95 5' 21.4"W | To: | |

| | | |
|---|----------------------------------|-----------------------------------|
| 16. Closest Boat Ramp Riverside Marina | 17. Distance From Ramp 0.5 NM | 18. Boat Type Flat Bottom Boat |
|---|----------------------------------|-----------------------------------|

| | |
|--|--|
| 19. Directions From Local Sector 610N to I-10E to Monmouth Road. North on Monmouth Rd. to T in road. Turn left and take first right, Park Rd. Proceed down Park Rd. to River Road. Go left. | 20. Closest Airport Baytown Airport (HPY) |
| | 21. Closest Helo Spot Baytown Airport (HPY) |

| | | |
|--|-----------------------|--------------------------------|
| 22. Trustee/Contact Numbers | 23. Resources at Risk | 24. Width of inlet 540' in ft. |
| USCG: (281) 464-4800 RRC: (713) 869-5001 | Atlas Priority Medium | 25. Water depth in ft. 20' |
| USCG DUTY: (800) 424-4800 TPWD: (281) 842-8100 | Environmental Medium | 26. Current Medium |
| TGLO: (800) 832-8224 NRDA: (512) 463 -9309 | Economic N/A | 27. No. of Personnel 4 |
| TCEQ: (713) 767-3563 USFWS: (281) 286-8282 | | |

| |
|---|
| 25. Booming Strategy Recommendation Boom to prevent oil from moving up or down the river. |
|---|



| | | |
|------------------|---------------------------------------|------------------------|
| 29. Prepared By: | 30. Reviewed by (PSC) | 31. Reviewed by (OSC): |
| Assignment List | ICS 204 OS (Geographic Response Plan) | Project Updated: |

"Response strategies may need to be modified to account for changes due to seasonality, weather conditions, spill characteristics, tides and any other considerations."

| | | |
|------------------|-----------------------------------|----------------------------|
| 1. Incident Name | 2. Operational Period (Date/Time) | Assignment List ICS 204-OS |
|------------------|-----------------------------------|----------------------------|

| | |
|-----------|-------------------|
| 3. Branch | 4. Division/Group |
|-----------|-------------------|

| | |
|---------------------------|-------|
| 5. Operations Personnel | |
| Operations Section Chief | _____ |
| Branch Director | _____ |
| Division/Group Supervisor | _____ |

6. Resources Assigned This Period "X" Indicates 204a attachment with special instructions

| Resource Identifier | Leader | Contact Info # | # of Persons | Reporting Info/Notes/Remarks |
|---------------------|--------|----------------|--------------|------------------------------|
| | | | | |
| | | | | |
| | | | | |
| | | | | |
| | | | | |
| | | | | |

| |
|----------------|
| 7. Assignments |
|----------------|

SAFETY NOTE: Swift current has been noted on the San Jacinto River near I-10.

| | | | | |
|-------------------------|---------------------------|---------------------------|----------------------------|----------------------|
| 8. Site Number: 40-F | 9. Quad Name Highlands | 10. NOAA Chart # 11329 | 11. GLO Atlas Page # 40 | 12. County Harris |
|-------------------------|---------------------------|---------------------------|----------------------------|----------------------|

| | | | |
|---|-------------------------------------|-----|--|
| 13. Site Information: San Jacinto River Marsh (South I-10) Marshes along east bank of I-10 in San Jacinto River. These marshes are along the east bank of the San Jacinto River just below I-10. There are some barrier islands that boom could be anchored to for protection of inner marshes. | 14. Latitude From: 29 47' 25"N | To: | |
| | 15. Longitude From: 95 3' 46.6"W | To: | |

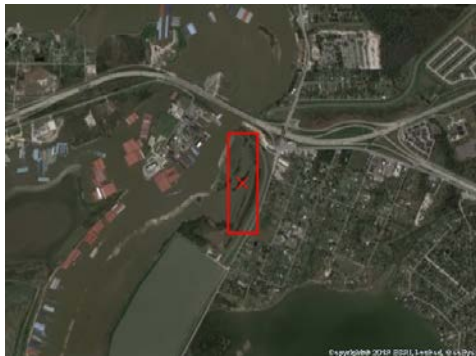
| | | |
|---|--------------------------------|-----------------------------------|
| 16. Closest Boat Ramp Riverside Marina | 17. Distance From Ramp 2 NM | 18. Boat Type Flat Bottom Boat |
|---|--------------------------------|-----------------------------------|

| | |
|---|--|
| 19. Directions From Local Sector 610N to I-10E to Lynchburg Rd. (Main St.) | 20. Closest Airport Baytown Airport (HPY) |
| | 21. Closest Helo Spot Baytown Airport (HPY) |

| | | |
|--|-----------------------|---------------------------------|
| 22. Trustee/Contact Numbers | 23. Resources at Risk | 24. Width of inlet 2000' in ft. |
| USCG: (281) 464-4800 RRC: (713) 869-5001 | Atlas Priority Medium | 25. Water depth in ft. 1' |
| USCG DUTY: (800) 424-4800 TPWD: (281) 842-8100 | Environmental Medium | 26. Current Medium |
| TGLO: (800) 832-8224 NRDA: (512) 463 -9309 | Economic High | 27. No. of Personnel 4 |
| TCEQ: (713) 767-3563 USFWS: (281) 286-8282 | | |

| |
|--|
| 25. Booming Strategy Recommendation Deploy boom to protect marsh |
|--|

AERIAL PHOTO



ON SITE PHOTO



| | | |
|------------------|---------------------------------------|------------------------|
| 29. Prepared By: | 30. Reviewed by (PSC) | 31. Reviewed by (OSC): |
| Assignment List | ICS 204 OS (Geographic Response Plan) | Project Updated: |

"Response strategies may need to be modified to account for changes due to seasonality, weather conditions, spill characteristics, tides and any other considerations."

| | | |
|------------------|-----------------------------------|----------------------------|
| 1. Incident Name | 2. Operational Period (Date/Time) | Assignment List ICS 204-OS |
|------------------|-----------------------------------|----------------------------|

| | |
|-----------|-------------------|
| 3. Branch | 4. Division/Group |
|-----------|-------------------|

| | |
|---------------------------|-------|
| 5. Operations Personnel | |
| Operations Section Chief | _____ |
| Branch Director | _____ |
| Division/Group Supervisor | _____ |

6. Resources Assigned This Period "X" Indicates 204a attachment with special instructions

| Resource Identifier | Leader | Contact Info # | # of Persons | Reporting Info/Notes/Remarks |
|---------------------|--------|----------------|--------------|------------------------------|
| | | | | |
| | | | | |
| | | | | |
| | | | | |
| | | | | |
| | | | | |

7. Assignments

SAFETY NOTE: All approaches to Burnet Bay are through shallow water. Very shallow nearshore, airboats may be needed.

| | | | | |
|-------------------------|---------------------------|-------------------------|----------------------------|----------------------|
| 8. Site Number: 40-G | 9. Quad Name Highlands | 10. NOAA Chart # N/A | 11. GLO Atlas Page # 40 | 12. County Harris |
|-------------------------|---------------------------|-------------------------|----------------------------|----------------------|

| | | | |
|---|-----------------------------------|-----|--|
| 13. Site Information: Burnet Bay Marsh (East) Burnet Bay- Marsh East of Lakeview Road. This sensitive marsh is along the northwest shore of Burnet Bay, West of Spring Bayou. | 14. Latitude From: 29 45' 56"N | To: | |
| | 15. Longitude From: 95 4'47"W | To: | |

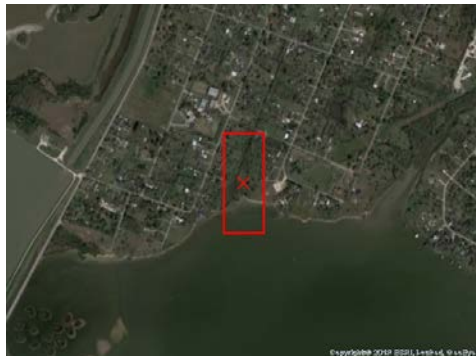
| | | |
|---|----------------------------------|--------------------------|
| 16. Closest Boat Ramp River Terrace Park | 17. Distance From Ramp 4.5 NM | 18. Boat Type Airboat |
|---|----------------------------------|--------------------------|

| | |
|---|--|
| 19. Directions From Local Sector 610N to I-10E to Lynchburg Rd. Go South to Lakeview Dr. Turn left and proceed to marsh. | 20. Closest Airport Baytown Airport (HPY) |
| | 21. Closest Helo Spot Baytown Airport (HPY) |

| | | |
|--|--------------------------|---------------------------------|
| 22. Trustee/Contact Numbers | 23. Resources at Risk | 24. Width of inlet 1000' in ft. |
| USCG: (281) 464-4800 RRC: (713) 869-5001 | Atlas Priority Low | 25. Water depth in ft. <1' |
| USCG DUTY: (800) 424-4800 TPWD: (281) 842-8100 | Environmental Low | 26. Current Slow |
| TGLO: (800) 832-8224 NRDA: (512) 463 -9309 | | 27. No. of Personnel 4 |
| TCEQ: (713) 767-3563 USFWS: (281) 286-8282 | Economic N/A | |

25. Booming Strategy **Recommendation**
Boom with 1000' of boom to protect exposed fringe marsh and prevent the movement of oil into drainage canal.

AERIAL PHOTO



ON SITE PHOTO



| | | |
|------------------|---------------------------------------|------------------------|
| 29. Prepared By: | 30. Reviewed by (PSC) | 31. Reviewed by (OSC): |
| Assignment List | ICS 204 OS (Geographic Response Plan) | Project Updated: |

"Response strategies may need to be modified to account for changes due to seasonality, weather conditions, spill characteristics, tides and any other considerations."

| | | |
|------------------|-----------------------------------|----------------------------|
| 1. Incident Name | 2. Operational Period (Date/Time) | Assignment List ICS 204-OS |
|------------------|-----------------------------------|----------------------------|

| | |
|-----------|-------------------|
| 3. Branch | 4. Division/Group |
|-----------|-------------------|

| | |
|---------------------------|-------|
| 5. Operations Personnel | |
| Operations Section Chief | _____ |
| Branch Director | _____ |
| Division/Group Supervisor | _____ |

6. Resources Assigned This Period "X" Indicates 204a attachment with special instructions

| Resource Identifier | Leader | Contact Info # | # of Persons | Reporting Info/Notes/Remarks |
|---------------------|--------|----------------|--------------|------------------------------|
| | | | | |
| | | | | |
| | | | | |
| | | | | |
| | | | | |
| | | | | |

| |
|----------------|
| 7. Assignments |
|----------------|

SAFETY NOTE: All approaches to Burnet Bay are through shallow water. Very shallow nearshore, airboats may be needed.

| | | | | |
|-------------------------|---------------------------|-------------------------|----------------------------|----------------------|
| 8. Site Number: 40-H | 9. Quad Name Highlands | 10. NOAA Chart # N/A | 11. GLO Atlas Page # 40 | 12. County Harris |
|-------------------------|---------------------------|-------------------------|----------------------------|----------------------|

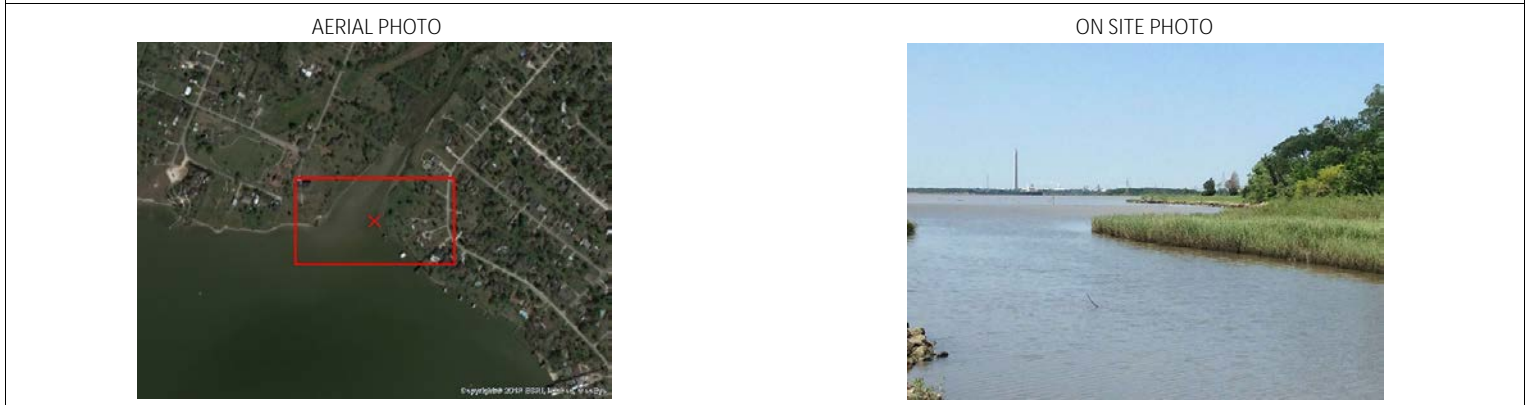
| | | | |
|--|-----------------------------------|-----|--|
| 13. Site Information: Spring Bayou Burnet Bay- Entrance to Spring Bayou. Spring Bayou is at the North end of Burnet Bay and leads into housing in Baytown. Along the banks are fringe marshes. | 14. Latitude From: 29 46' 45"N | To: | |
| | 15. Longitude From: 95 3' 20"W | To: | |

| | | |
|---|----------------------------------|--------------------------|
| 16. Closest Boat Ramp River Terrace Park | 17. Distance From Ramp 4.5 NM | 18. Boat Type Airboat |
|---|----------------------------------|--------------------------|

| | |
|--|--|
| 19. Directions From Local Sector 610N to I-10E to Lynchburg Rd. Go South to Center St., turn left. Proceed to Mable St., turn right.. | 20. Closest Airport Baytown Airport (HPY) |
| | 21. Closest Helo Spot Baytown Airport (HPY) |

| | | |
|--|--------------------------|--------------------------------|
| 22. Trustee/Contact Numbers | 23. Resources at Risk | 24. Width of inlet 600' in ft. |
| USCG: (281) 464-4800 RRC: (713) 869-5001 | Atlas Priority Low | 25. Water depth in ft. 1' |
| USCG DUTY: (800) 424-4800 TPWD: (281) 842-8100 | Environmental Low | 26. Current Slow |
| TGLO: (800) 832-8224 NRDA: (512) 463 -9309 | Economic N/A | 27. No. of Personnel 4 |
| TCEQ: (713) 767-3563 USFWS: (281) 286-8282 | | |

| |
|---|
| 25. Booming Strategy Recommendation Boom across entrance to prevent migration inland. |
|---|



| | | |
|------------------|---------------------------------------|------------------------|
| 29. Prepared By: | 30. Reviewed by (PSC) | 31. Reviewed by (OSC): |
| Assignment List | ICS 204 OS (Geographic Response Plan) | Project Updated: |

"Response strategies may need to be modified to account for changes due to seasonality, weather conditions, spill characteristics, tides and any other considerations."

| | | |
|------------------|-----------------------------------|----------------------------|
| 1. Incident Name | 2. Operational Period (Date/Time) | Assignment List ICS 204-OS |
|------------------|-----------------------------------|----------------------------|

| | |
|-----------|-------------------|
| 3. Branch | 4. Division/Group |
|-----------|-------------------|

| | |
|---------------------------|-------|
| 5. Operations Personnel | |
| Operations Section Chief | _____ |
| Branch Director | _____ |
| Division/Group Supervisor | _____ |

| 6. Resources Assigned This Period | | | | | "X" Indicates 204a attachment with special instructions |
|-----------------------------------|--------|----------------|--------------|------------------------------|---|
| Resource Identifier | Leader | Contact Info # | # of Persons | Reporting Info/Notes/Remarks | |
| | | | | | |
| | | | | | |
| | | | | | |
| | | | | | |
| | | | | | |
| | | | | | |

| |
|----------------|
| 7. Assignments |
|----------------|

SAFETY NOTE: Crews operating along the shoreline of the ship channel should expect wake action from passing vessels.

| | | | | |
|-------------------------|---------------------------|---------------------------|----------------------------|----------------------|
| 8. Site Number: 40-I | 9. Quad Name Highlands | 10. NOAA Chart # 11329 | 11. GLO Atlas Page # 40 | 12. County Harris |
|-------------------------|---------------------------|---------------------------|----------------------------|----------------------|

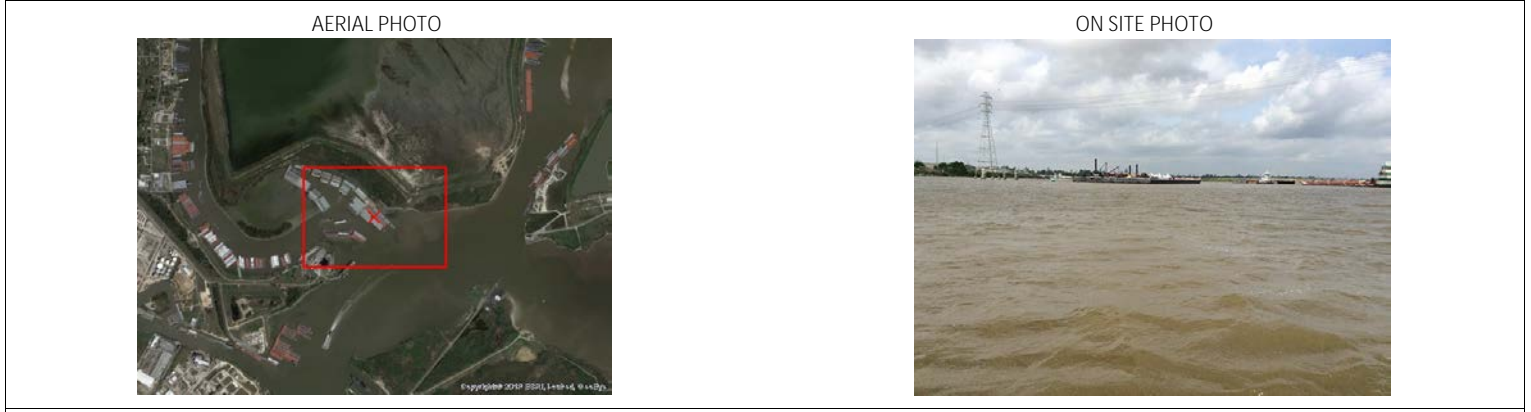
| | | | | |
|---|--|--|-----------------------------------|-----|
| 13. Site Information: Old River (HSC) Entrance to Old River. This is where Old River joins the Houston Ship Channel. The area is congested with vessel traffic. At red channel marker 128. Potential staging and recovery locations along the West side of Old River. | | | 14. Latitude From: 29 45' 53"N | To: |
| | | | 15. Longitude From: 95 5' 13"W | To: |

| | | |
|---|----------------------------------|---------------------------------|
| 16. Closest Boat Ramp River Terrace Park | 17. Distance From Ramp 1.5 NM | 18. Boat Type Multiple Types |
|---|----------------------------------|---------------------------------|

| | | |
|--|--|--|
| 19. Directions From Local Sector 610N to I-10E to Sheldon Road exit. Right on Sheldon Rd. to Market Street. Left on Market St. Right on De Zavalla. | | 20. Closest Airport Baytown Airport (HPY) |
| | | 21. Closest Helo Spot Baytown Airport (HPY) |

| | | |
|--|-----------------------|---------------------------------|
| 22. Trustee/Contact Numbers | 23. Resources at Risk | 24. Width of inlet 1800' in ft. |
| USCG: (281) 464-4800 RRC: (713) 869-5001 | Atlas Priority Medium | 25. Water depth in ft. 20' |
| USCG DUTY: (800) 424-4800 TPWD: (281) 842-8100 | Environmental Medium | 26. Current Slow |
| TGLO: (800) 832-8224 NRDA: (512) 463 -9309 | Economic High | 27. No. of Personnel 4 |
| TCEQ: (713) 767-3563 USFWS: (281) 286-8282 | | |

| |
|---|
| 25. Booming Strategy Recommendation Boom across entrance to prevent oil from entering or exiting old river. |
|---|



| | | |
|------------------|---------------------------------------|------------------------|
| 29. Prepared By: | 30. Reviewed by (PSC) | 31. Reviewed by (OSC): |
| Assignment List | ICS 204 OS (Geographic Response Plan) | Project Updated: |

"Response strategies may need to be modified to account for changes due to seasonality, weather conditions, spill characteristics, tides and any other considerations."

| | | |
|------------------|-----------------------------------|----------------------------|
| 1. Incident Name | 2. Operational Period (Date/Time) | Assignment List ICS 204-OS |
|------------------|-----------------------------------|----------------------------|

| | |
|-----------|-------------------|
| 3. Branch | 4. Division/Group |
|-----------|-------------------|

| | |
|---|--|
| 5. Operations Personnel Operations Section Chief _____ Branch Director _____ Division/Group Supervisor _____ | |
|---|--|

6. Resources Assigned This Period "X" Indicates 204a attachment with special instructions

| Resource Identifier | Leader | Contact Info # | # of Persons | Reporting Info/Notes/Remarks |
|---------------------|--------|----------------|--------------|------------------------------|
| | | | | |
| | | | | |
| | | | | |
| | | | | |
| | | | | |
| | | | | |

| |
|----------------|
| 7. Assignments |
|----------------|

SAFETY NOTE: Crews operating along the shoreline of the ship channel should expect wake action from passing vessels. In security zone.

| | | | | |
|-------------------------|---------------------------|---------------------------|----------------------------|----------------------|
| 8. Site Number: 40-J | 9. Quad Name Highlands | 10. NOAA Chart # 11329 | 11. GLO Atlas Page # 40 | 12. County Harris |
|-------------------------|---------------------------|---------------------------|----------------------------|----------------------|

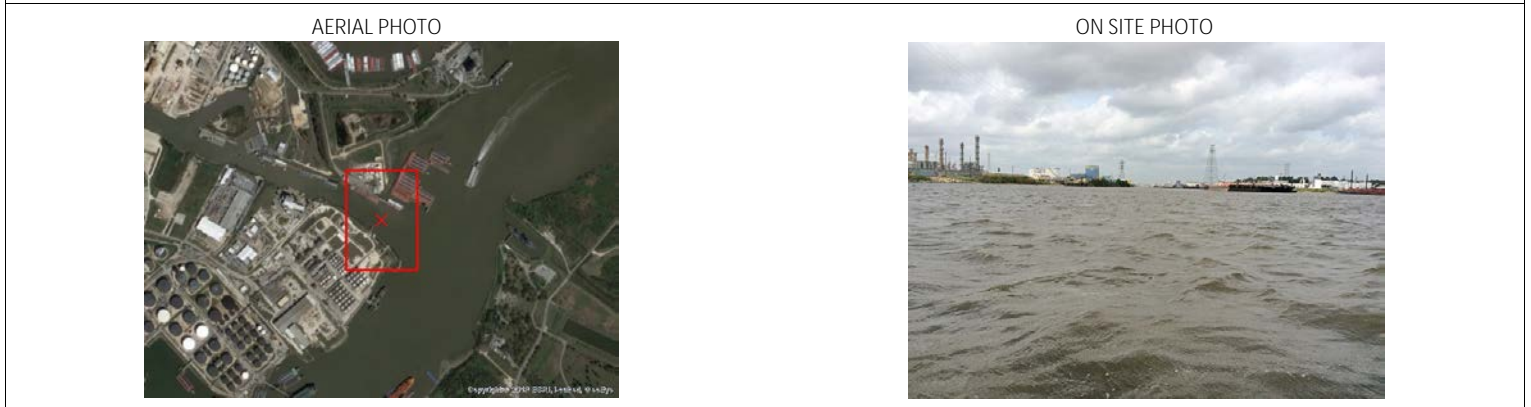
| | | | | | |
|--|-------------------------------------|-----|--|-----------------------------------|-----|
| 13. Site Information: Carpenters Bayou Entrance to Carpenter's Bayou. This is where Carpenter's Bayou joins the Houston Ship Channel. The area is congested with vessel traffic. | 14. Latitude From: 29 45' 24.5"N | To: | | 15. Longitude From: 95 5' 42"W | To: |
|--|-------------------------------------|-----|--|-----------------------------------|-----|

| | | |
|---|----------------------------------|---------------------------------|
| 16. Closest Boat Ramp River Terrace Park | 17. Distance From Ramp 2.2 NM | 18. Boat Type Multiple Types |
|---|----------------------------------|---------------------------------|

| | | |
|--|--|--|
| 19. Directions From Local Sector 610N to I-10E to Sheldon Road exit. Right on Sheldon Rd. to Market Street. Left on Market St. Right on De Zavalla. Proceed to bayou. | 20. Closest Airport Baytown Airport (HPY) | 21. Closest Helo Spot Baytown Airport (HPY) |
|--|--|--|

| | | |
|---|---|--|
| 22. Trustee/Contact Numbers USCG: (281) 464-4800 RRC: (713) 869-5001 USCG DUTY: (800) 424-4800 TPWD: (281) 842-8100 TGLO: (800) 832-8224 NRDA: (512) 463 -9309 TCEQ: (713) 767-3563 USFWS: (281) 286-8282 | 23. Resources at Risk Atlas Priority N/A Environmental N/A Economic High | 24. Width of inlet 650' in ft. 25. Water depth in ft. 15' 26. Current Slow 27. No. of Personnel 4 |
|---|---|--|

| |
|--|
| 25. Booming Strategy Recommendation Boom across entrance to prevent oil from entering or exiting Carpenters Bayou. |
|--|



| | | |
|------------------|---------------------------------------|------------------------|
| 29. Prepared By: | 30. Reviewed by (PSC) | 31. Reviewed by (OSC): |
| Assignment List | ICS 204 OS (Geographic Response Plan) | Project Updated: |

"Response strategies may need to be modified to account for changes due to seasonality, weather conditions, spill characteristics, tides and any other considerations."

| | | |
|------------------|-----------------------------------|----------------------------|
| 1. Incident Name | 2. Operational Period (Date/Time) | Assignment List ICS 204-OS |
|------------------|-----------------------------------|----------------------------|

| | |
|-----------|-------------------|
| 3. Branch | 4. Division/Group |
|-----------|-------------------|

| | |
|---------------------------|-------|
| 5. Operations Personnel | |
| Operations Section Chief | _____ |
| Branch Director | _____ |
| Division/Group Supervisor | _____ |

6. Resources Assigned This Period "X" Indicates 204a attachment with special instructions

| Resource Identifier | Leader | Contact Info # | # of Persons | Reporting Info/Notes/Remarks |
|---------------------|--------|----------------|--------------|------------------------------|
| | | | | |
| | | | | |
| | | | | |
| | | | | |
| | | | | |
| | | | | |

7. Assignments

SAFETY NOTE: Crews operating along the shoreline of the ship channel should expect wake action from passing vessels. In security zone.

| | | | | |
|-------------------------|---------------------------|---------------------------|----------------------------|----------------------|
| 8. Site Number: 40-K | 9. Quad Name Highlands | 10. NOAA Chart # 11329 | 11. GLO Atlas Page # 40 | 12. County Harris |
|-------------------------|---------------------------|---------------------------|----------------------------|----------------------|

| | | | |
|--|-----------------------------------|-----|--|
| 13. Site Information: Battleship Texas State Park Battleship Texas State Historic Park. The Battleship Texas is in a cut off the Houston Ship Channel. 400' containment boom is prestaged under walkway to Battleship. | 14. Latitude From: 29 45' 24"N | To: | |
| | 15. Longitude From: 95 5' 25"W | To: | |

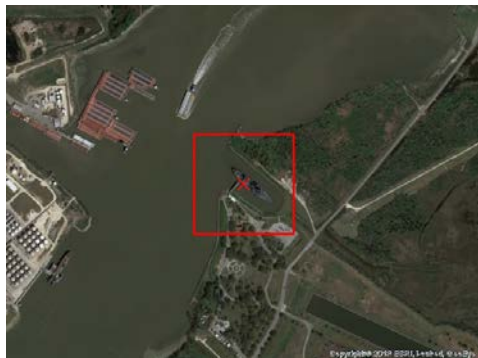
| | | |
|---|--------------------------------|---------------------------------|
| 16. Closest Boat Ramp River Terrace Park | 17. Distance From Ramp 2 NM | 18. Boat Type Multiple Types |
|---|--------------------------------|---------------------------------|

| | |
|---|---|
| 19. Directions From Local Sector Take I-610 north to SH 225, go East. Exit Independence Pkwy. Proceed to park. | 20. Closest Airport La Porte Municipal (T41) |
| | 21. Closest Helo Spot La Porte Municipal (T41) |

| | | |
|--|--------------------------|--------------------------------|
| 22. Trustee/Contact Numbers | 23. Resources at Risk | 24. Width of inlet 500' in ft. |
| USCG: (281) 464-4800 RRC: (713) 869-5001 | Atlas Priority Low | 25. Water depth in ft. 23' |
| USCG DUTY: (800) 424-4800 TPWD: (281) 842-8100 | Environmental Low | 26. Current Slow |
| TGLO: (800) 832-8224 NRDA: (512) 463 -9309 | Economic High | 27. No. of Personnel 4 |
| TCEQ: (713) 767-3563 USFWS: (281) 286-8282 | | |

25. Booming Strategy **Recommendation**
Boom across entrance to prevent oil entering slip and adjacent marsh. Concrete culvert at back of slip leads to extensive marsh complex and special attention needs to be paid to tides and additional booming at culvert.

AERIAL PHOTO



ON SITE PHOTO



| | | |
|------------------|---------------------------------------|------------------------|
| 29. Prepared By: | 30. Reviewed by (PSC) | 31. Reviewed by (OSC): |
| Assignment List | ICS 204 OS (Geographic Response Plan) | Project Updated: |

"Response strategies may need to be modified to account for changes due to seasonality, weather conditions, spill characteristics, tides and any other considerations."

| | | |
|------------------|-----------------------------------|----------------------------|
| 1. Incident Name | 2. Operational Period (Date/Time) | Assignment List ICS 204-OS |
|------------------|-----------------------------------|----------------------------|

| | |
|-----------|-------------------|
| 3. Branch | 4. Division/Group |
|-----------|-------------------|

| | |
|---------------------------|-------|
| 5. Operations Personnel | _____ |
| Operations Section Chief | _____ |
| Branch Director | _____ |
| Division/Group Supervisor | _____ |

6. Resources Assigned This Period "X" Indicates 204a attachment with special instructions

| Resource Identifier | Leader | Contact Info # | # of Persons | Reporting Info/Notes/Remarks |
|---------------------|--------|----------------|--------------|------------------------------|
| | | | | |
| | | | | |
| | | | | |
| | | | | |
| | | | | |
| | | | | |

| |
|----------------|
| 7. Assignments |
|----------------|

SAFETY NOTE: Crews operating along the shoreline of the ship channel should expect wake action from passing vessels.

| | | | | |
|-------------------------|---------------------------|---------------------------|----------------------------|----------------------|
| 8. Site Number: 40-L | 9. Quad Name Highlands | 10. NOAA Chart # 11329 | 11. GLO Atlas Page # 40 | 12. County Harris |
|-------------------------|---------------------------|---------------------------|----------------------------|----------------------|

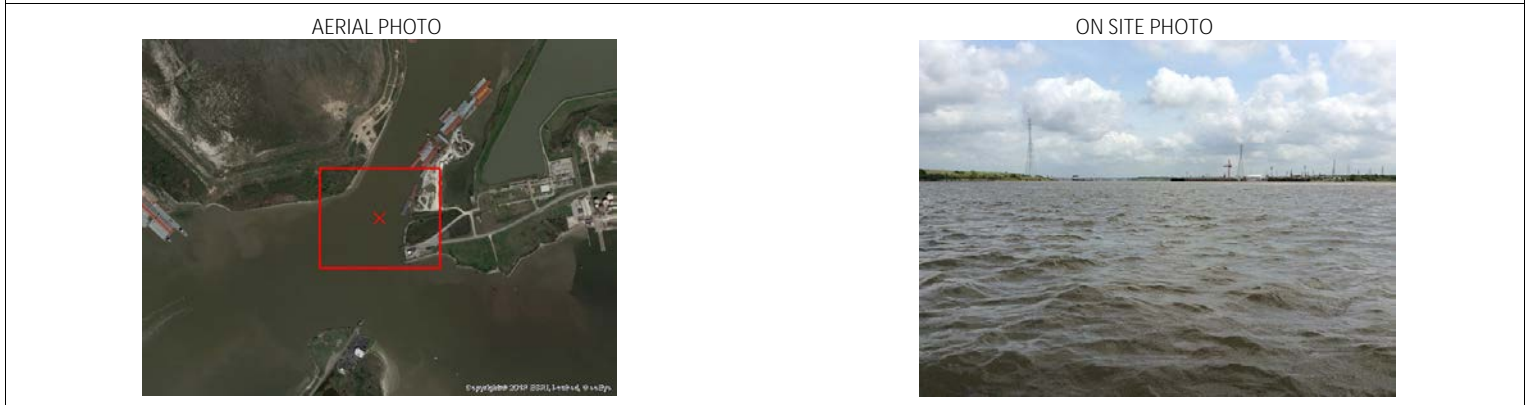
| | | | | | |
|---|-----------------------------------|-----|--|-----------------------------------|-----|
| 13. Site Information: San Jacinto River Entrance to San Jacinto River. This is where the San Jacinto River joins the Houston Ship Channel. The area is congested with vessel traffic. In case of emergency Contact Lynchburg Ferry 281-424-3521 | 14. Latitude From: 29 46' 00"N | To: | | 15. Longitude From: 95 4' 47"W | To: |
|---|-----------------------------------|-----|--|-----------------------------------|-----|

| | | |
|---|-----------------------------------|---------------------------------|
| 16. Closest Boat Ramp River Terrace Park | 17. Distance From Ramp 1.75 NM | 18. Boat Type Multiple Types |
|---|-----------------------------------|---------------------------------|

| | | |
|--|--|--|
| 19. Directions From Local Sector 610N to I-10E to Sheldon Road exit. Right on Sheldon Rd. to Market Street. Left on Market St. and look for park entrance on right. | 20. Closest Airport Baytown Airport (HPY) | 21. Closest Helo Spot Baytown Airport (HPY) |
|--|--|--|

| | | |
|---|--|--|
| 22. Trustee/Contact Numbers USCG: (281) 464-4800 RRC: (713) 869-5001 USCG DUTY: (800) 424-4800 TPWD: (281) 842-8100 TGLO: (800) 832-8224 NRDA: (512) 463 -9309 TCEQ: (713) 767-3563 USFWS: (281) 286-8282 | 23. Resources at Risk Atlas Priority Low Environmental Low Economic High | 24. Width of inlet 850' in ft. 25. Water depth in ft. 35' 26. Current Medium 27. No. of Personnel 4 |
|---|--|--|

| |
|--|
| 25. Booming Strategy Recommendation Deploy boom to prevent movement of oil into or out of the San Jacinto River. |
|--|



| | | |
|-------------------------------------|--|--|
| 29. Prepared By: Assignment List | 30. Reviewed by (PSC) ICS 204 OS (Geographic Response Plan) | 31. Reviewed by (OSC): Project Updated: |
|-------------------------------------|--|--|

"Response strategies may need to be modified to account for changes due to seasonality, weather conditions, spill characteristics, tides and any other considerations."

| | | |
|------------------|-----------------------------------|----------------------------|
| 1. Incident Name | 2. Operational Period (Date/Time) | Assignment List ICS 204-OS |
|------------------|-----------------------------------|----------------------------|

| | |
|-----------|-------------------|
| 3. Branch | 4. Division/Group |
|-----------|-------------------|

| | |
|---------------------------|-------|
| 5. Operations Personnel | |
| Operations Section Chief | _____ |
| Branch Director | _____ |
| Division/Group Supervisor | _____ |

| 6. Resources Assigned This Period | | | | | "X" Indicates 204a attachment with special instructions |
|-----------------------------------|--------|----------------|--------------|------------------------------|---|
| Resource Identifier | Leader | Contact Info # | # of Persons | Reporting Info/Notes/Remarks | |
| | | | | | |
| | | | | | |
| | | | | | |
| | | | | | |
| | | | | | |
| | | | | | |

| |
|----------------|
| 7. Assignments |
|----------------|

SAFETY NOTE: All approaches to Burnett Bay and Crystal Bay are through shallow water. Very shallow nearshore, airboats may be needed.

| | | | | |
|-------------------------|---------------------------|---------------------------|----------------------------|----------------------|
| 8. Site Number: 40-M | 9. Quad Name Highlands | 10. NOAA Chart # 11329 | 11. GLO Atlas Page # 40 | 12. County Harris |
|-------------------------|---------------------------|---------------------------|----------------------------|----------------------|

| | | | |
|--|-----------------------------------|-----|--|
| 13. Site Information: Baytown Nature Center Baytown Nature Center Park west of Bayshore Road. This park is on an isthmus between Crystal and Burnet Bays. There is fringe marsh around most of it. | 14. Latitude From: 29 45' 26"N | To: | |
| | 15. Longitude From: 95 3' 15"W | To: | |

| | | |
|---|----------------------------------|--------------------------|
| 16. Closest Boat Ramp River Terrace Park | 17. Distance From Ramp 4.5 NM | 18. Boat Type Airboat |
|---|----------------------------------|--------------------------|

| | |
|--|--|
| 19. Directions From Local Sector 610N to I-10E to Spur 330. East to Bayway Dr., exit right. Right onto W. Shreck St. Right on Bayshore Dr. to park. | 20. Closest Airport Baytown Airport (HPY) |
| | 21. Closest Helo Spot Baytown Airport (HPY) |

| | | |
|--|-----------------------|--------------------------------|
| 22. Trustee/Contact Numbers | 23. Resources at Risk | 24. Width of inlet N/A in ft. |
| USCG: (281) 464-4800 RRC: (713) 869-5001 | Atlas Priority Medium | 25. Water depth in ft. shallow |
| USCG DUTY: (800) 424-4800 TPWD: (281) 842-8100 | Environmental Medium | 26. Current Slow |
| TGLO: (800) 832-8224 NRDA: (512) 463 -9309 | Economic N/A | 27. No. of Personnel 4 |
| TCEQ: (713) 767-3563 USFWS: (281) 286-8282 | | |

| |
|--|
| 25. Booming Strategy Recommendation Boom with 1500' of boom to protect exposed fringe marsh. |
|--|



| | | |
|------------------|---------------------------------------|------------------------|
| 29. Prepared By: | 30. Reviewed by (PSC) | 31. Reviewed by (OSC): |
| Assignment List | ICS 204 OS (Geographic Response Plan) | Project Updated: |

"Response strategies may need to be modified to account for changes due to seasonality, weather conditions, spill characteristics, tides and any other considerations."

| | | |
|------------------|-----------------------------------|----------------------------|
| 1. Incident Name | 2. Operational Period (Date/Time) | Assignment List ICS 204-OS |
|------------------|-----------------------------------|----------------------------|

| | |
|-----------|-------------------|
| 3. Branch | 4. Division/Group |
|-----------|-------------------|

| | |
|---------------------------|-------|
| 5. Operations Personnel | |
| Operations Section Chief | _____ |
| Branch Director | _____ |
| Division/Group Supervisor | _____ |

6. Resources Assigned This Period "X" Indicates 204a attachment with special instructions

| Resource Identifier | Leader | Contact Info # | # of Persons | Reporting Info/Notes/Remarks |
|---------------------|--------|----------------|--------------|------------------------------|
| | | | | |
| | | | | |
| | | | | |
| | | | | |
| | | | | |
| | | | | |

7. Assignments

SAFETY NOTE: All approaches to Burnet Bay are through shallow water. Very shallow nearshore, airboats may be needed.

| | | | | |
|-------------------------|---------------------------|---------------------------|----------------------------|----------------------|
| 8. Site Number: 40-N | 9. Quad Name Highlands | 10. NOAA Chart # 11329 | 11. GLO Atlas Page # 40 | 12. County Harris |
|-------------------------|---------------------------|---------------------------|----------------------------|----------------------|

| | | |
|---|-----------------------------------|-----|
| 13. Site Information: Freshwater Bayou Burnet Bay- Entrance to Freshwater Bayou. Freshwater Bayou is at the Southeast corner of Burnet Bay and leads into the Point Royale subdivision. Along the banks are fringe marshes. | 14. Latitude From: 29 45' 40"N | To: |
| | 15. Longitude From: 95 2' 39"W | To: |

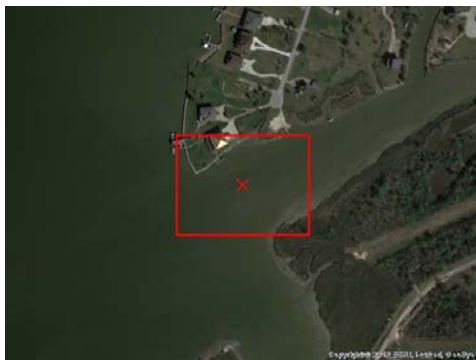
| | | |
|---|----------------------------------|--------------------------|
| 16. Closest Boat Ramp River Terrace Park | 17. Distance From Ramp 4.5 NM | 18. Boat Type Airboat |
|---|----------------------------------|--------------------------|

| | |
|--|--|
| 19. Directions From Local Sector 610N to I-10E to Spur 330. East to Bayway Dr., exit right. Right onto W. Shreck St to bayou. | 20. Closest Airport Baytown Airport (HPY) |
| | 21. Closest Helo Spot Baytown Airport (HPY) |

| | | |
|--|--------------------------|--------------------------------|
| 22. Trustee/Contact Numbers | 23. Resources at Risk | 24. Width of inlet 450' in ft. |
| USCG: (281) 464-4800 RRC: (713) 869-5001 | Atlas Priority Low | 25. Water depth in ft. 4' |
| USCG DUTY: (800) 424-4800 TPWD: (281) 842-8100 | Environmental Low | 26. Current Slow |
| TGLO: (800) 832-8224 NRDA: (512) 463 -9309 | Economic N/A | 27. No. of Personnel 4 |
| TCEQ: (713) 767-3563 USFWS: (281) 286-8282 | | |

25. Booming Strategy **Recommendation**
Boom across entrance to prevent oil movement into bayou and associated marsh.

AERIAL PHOTO



ON SITE PHOTO



| | | |
|------------------|---------------------------------------|------------------------|
| 29. Prepared By: | 30. Reviewed by (PSC) | 31. Reviewed by (OSC): |
| Assignment List | ICS 204 OS (Geographic Response Plan) | Project Updated: |

"Response strategies may need to be modified to account for changes due to seasonality, weather conditions, spill characteristics, tides and any other considerations."

| | | |
|------------------|-----------------------------------|----------------------------|
| 1. Incident Name | 2. Operational Period (Date/Time) | Assignment List ICS 204-OS |
|------------------|-----------------------------------|----------------------------|

| | |
|-----------|-------------------|
| 3. Branch | 4. Division/Group |
|-----------|-------------------|

| | |
|---------------------------|-------|
| 5. Operations Personnel | _____ |
| Operations Section Chief | _____ |
| Branch Director | _____ |
| Division/Group Supervisor | _____ |

| 6. Resources Assigned This Period | | | | | | "X" Indicates 204a attachment with special instructions |
|-----------------------------------|--------|----------------|--------------|------------------------------|--|---|
| Resource Identifier | Leader | Contact Info # | # of Persons | Reporting Info/Notes/Remarks | | |
| | | | | | | |
| | | | | | | |
| | | | | | | |
| | | | | | | |
| | | | | | | |
| | | | | | | |

| |
|----------------|
| 7. Assignments |
|----------------|

SAFETY NOTE: All approaches to marsh are through shallow water. Very shallow nearshore, airboats may be needed.

| | | | | |
|-------------------------|---------------------------|---------------------------|----------------------------|----------------------|
| 8. Site Number: 40-O | 9. Quad Name Highlands | 10. NOAA Chart # 11329 | 11. GLO Atlas Page # 40 | 12. County Harris |
|-------------------------|---------------------------|---------------------------|----------------------------|----------------------|

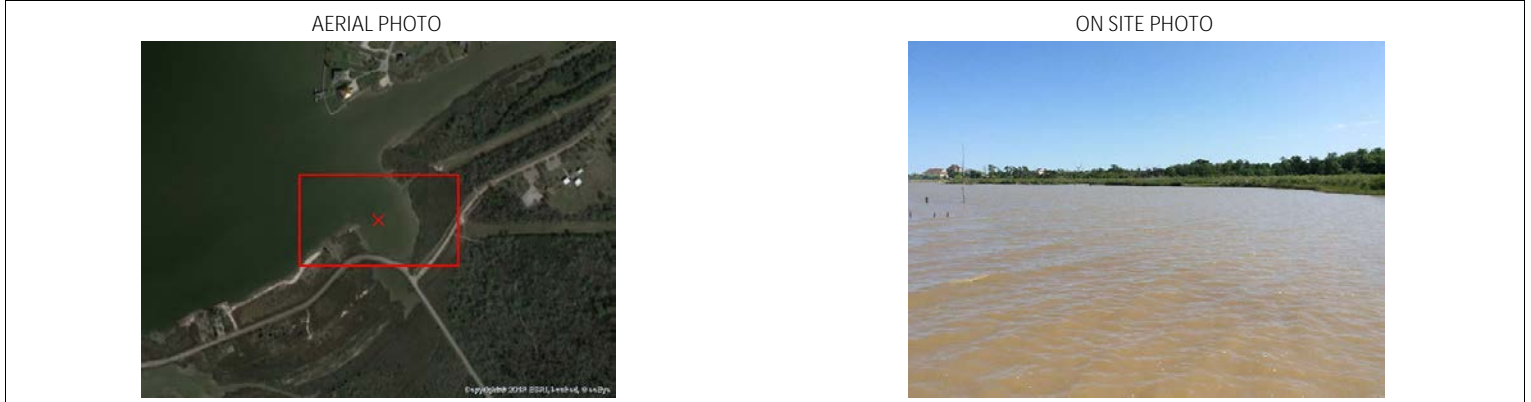
| | | | |
|--|-----------------------------------|-----|--|
| 13. Site Information: Baytown Nature Center marsh Burnet Bay- Marsh at Brownwood Subdivision Nature Preserve. This sensitive marsh is along the south shore of Burnet Bay near Freshwater Bayou. | 14. Latitude From: 29 45' 37"N | To: | |
| | 15. Longitude From: 95 2' 40"W | To: | |

| | | |
|---|----------------------------------|--------------------------|
| 16. Closest Boat Ramp River Terrace Park | 17. Distance From Ramp 4.5 NM | 18. Boat Type Airboat |
|---|----------------------------------|--------------------------|

| | |
|--|--|
| 19. Directions From Local Sector 610N to I-10E to Spur 330. East to Bayway Dr., exit right. Right onto W. Shreck St to marsh. | 20. Closest Airport Baytown Airport (HPY) |
| | 21. Closest Helo Spot Baytown Airport (HPY) |

| | | |
|---|---|---|
| 22. Trustee/Contact Numbers USCG: (281) 464-4800 RRC: (713) 869-5001 USCG DUTY: (800) 424-4800 TPWD: (281) 842-8100 TGLO: (800) 832-8224 NRDA: (512) 463 -9309 TCEQ: (713) 767-3563 USFWS: (281) 286-8282 | 23. Resources at Risk Atlas Priority Low Environmental Low Economic N/A | 24. Width of inlet 1500' in ft. 25. Water depth in ft. 1' 26. Current Slow 27. No. of Personnel 4 |
|---|---|---|

| |
|--|
| 25. Booming Strategy Recommendation Boom with 1500' of boom to protect exposed fringe marsh. |
|--|



| | | |
|------------------|---------------------------------------|------------------------|
| 29. Prepared By: | 30. Reviewed by (PSC) | 31. Reviewed by (OSC): |
| Assignment List | ICS 204 OS (Geographic Response Plan) | Project Updated: |

"Response strategies may need to be modified to account for changes due to seasonality, weather conditions, spill characteristics, tides and any other considerations."