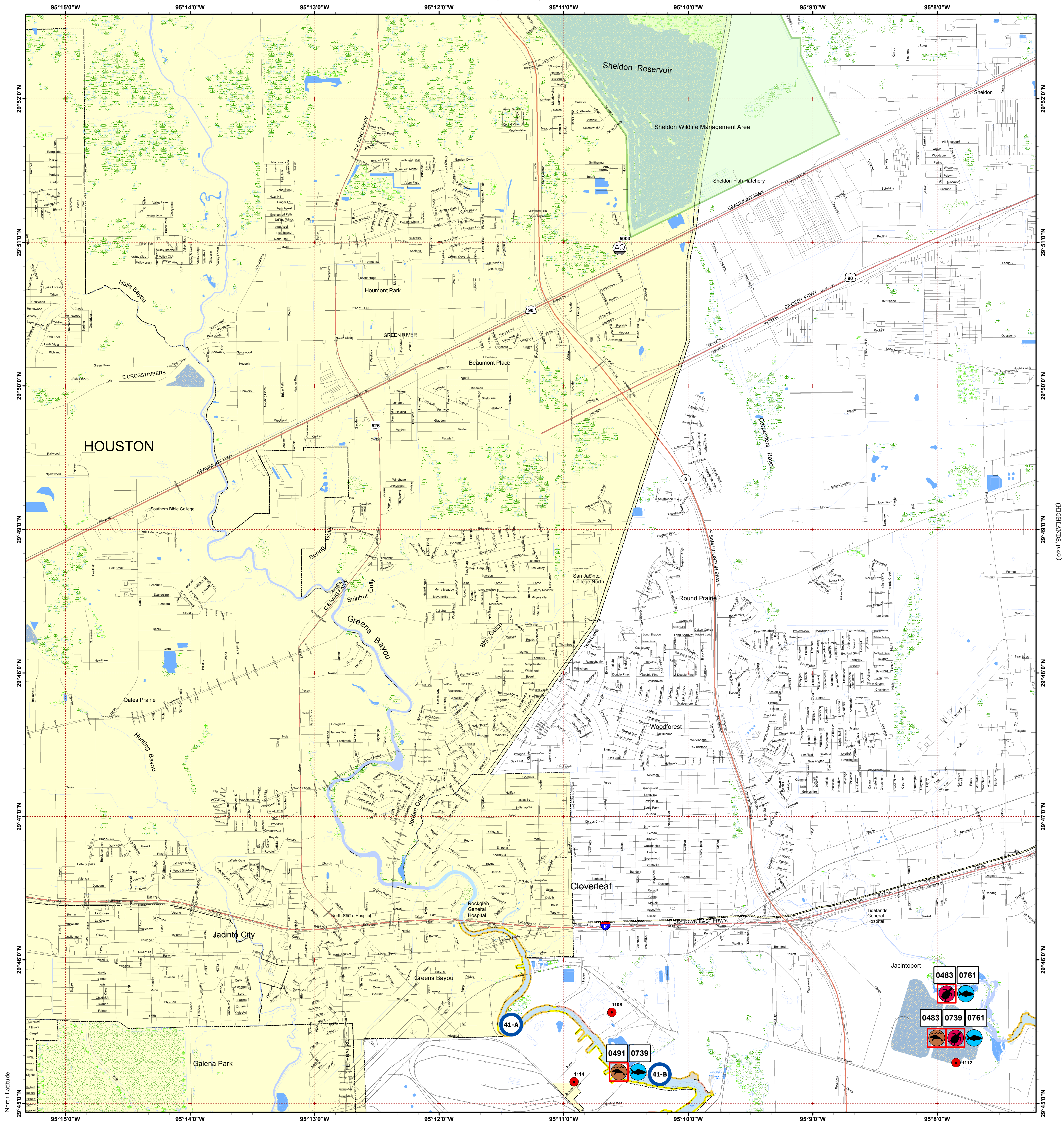


JACINTO CITY

(HARMASTON, p.28)

[Click Here or Scroll Down for Associated Map Data](#)

Click on the Geographic Response Plan Target to View the ICS Form

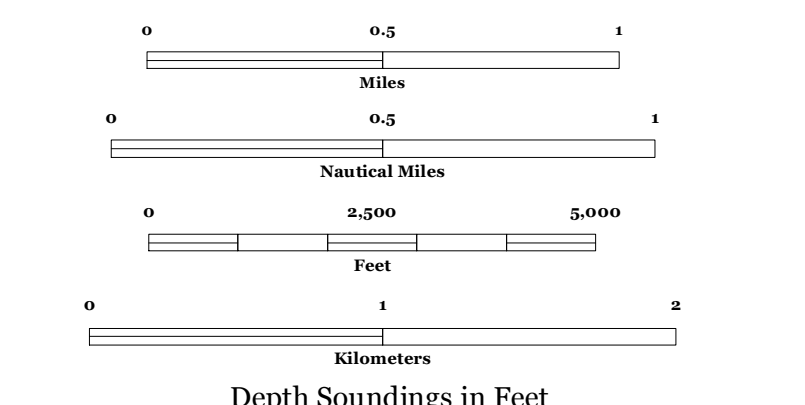
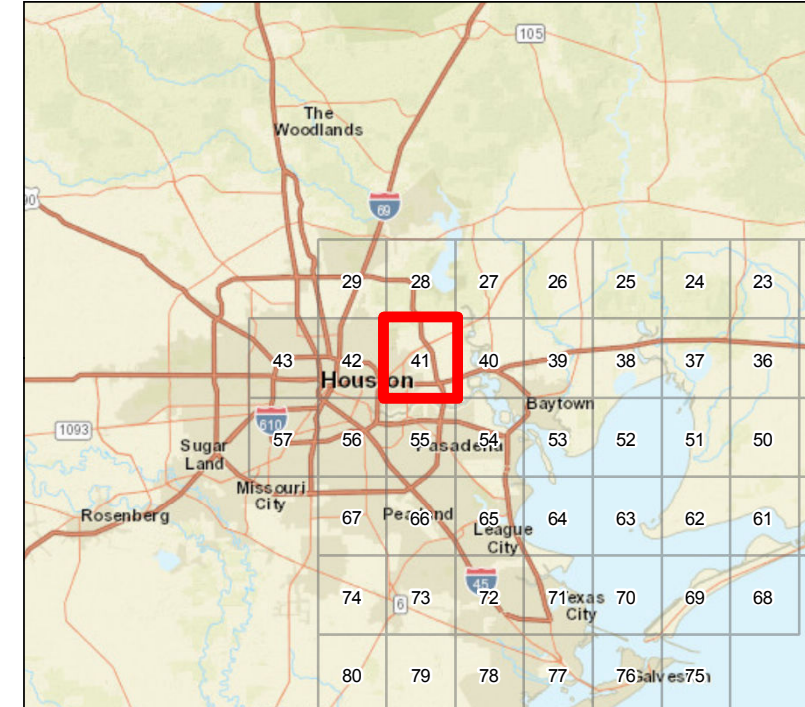


(SETTECAST, p.42)

(OPUS, SINKVATHDHD)



Oil Spill Planning and Response Atlas



- ### Human Use Features
- Aquaculture Site
 - Facility
 - Geographic Response Plan

- ### Priority Protection Areas
- Lake / Pond
 - Tidally Influenced River
 - Perennial River
 - County Boundary
 - City Limits

- ### Map Base Layers
- County Road
 - Interstate Highway
 - State Highway
 - US Highway
 - Railroads
 - Airport Runways
 - Road
 - GIWW
 - State Parks/WMA's
 - Bays
 - Salt and Brackish Marshes
 - Beach or Tidal Flat
 - Exposed Lake Shore
 - Freshwater Marshes
 - Swamps and Flooded Woodlands
 - Willow Thickets

- ### Species Icons Within Map Quad
- Turtle T/E
 - Mammal T/E
 - Fish

- ### ENVIRONMENTAL SENSITIVITY INDEX
- 10D Mangroves and Woody Vegetation
 - 10C Freshwater Swamps
 - 10B Freshwater Marshes
 - 10A Salt and Brackish Water Marshes
 - 9 Sheltered Tidal Flats
 - 8C Sheltered Rocky/Karst Shores
 - 8D Sheltered Scarp
 - 8B Sheltered Riprap Structures
 - 8A Sheltered Solid Manmade Structures
 - 7 Exposed Tidal Flats
 - 6B Exposed Riprap Structures
 - 6A Gravel or Shell Beaches
 - 5 Mixed Sand and Gravel or Shell Beaches
 - 4 Coarse-Grained Sand Beaches
 - 3B Scrap and Steep Slopes in Sand
 - 3A Fine-Grained Sand Beaches
 - 2B Wave-Cut Clay Platforms
 - 2A Scrap and Steep Slopes in Clay
 - 1 Exposed Walls and Other Solid Structures

The Texas General Land Office makes no representations or warranties regarding the accuracy or completeness of the information depicted on this map or the data from which it was produced. This map is not suitable for navigational purposes and does not purport to depict boundaries of private and public land.

Quadrant: JACINTO CITY

Map # :41

Biological Information for this quadrant represents known concentration areas of occurrence.

Biological Resources

Fish

RARNUM	NAME	S F	T E	CONC	J	F	M	A	M	J	J	A	S	O	N	D	Spawning	Eggs	Larvae	Juveniles	Adults
0483	Tarpon			RARE			X	X	X	X	X	X	X	X	X		-	-	-	MAR-NOV	-
0491	Rainwater killifish			-	X	X	X	X	X	X	X	X	X	X	X	X	FEB-JUN	-	-	-	-
	Sailfin molly			-	X	X	X	X	X	X	X	X	X	X	X	X	-	-	-	-	-
	Tarpon			RARE			X	X	X	X	X	X	X	X	X		-	-	-	MAR-NOV	-
	Blue catfish			-	X	X	X	X	X	X	X	X	X	X	X	X	APR-MAY	-	-	-	JAN-DEC
	Smallmouth buffalo			-	X	X	X	X	X	X	X	X	X	X	X	X	-	-	-	-	JAN-DEC

Marine Mammal

RARNUM	NAME	S F	T E	CONC	J	F	M	A	M	J	J	A	S	O	N	D	Mating	Calving	Pupping	Molting
0739	West Indian manatee	S/F	E/E	VERY-RARE						X	X	X					-	-	-	-

Reptile

RARNUM	NAME	S F	T E	CONC	J	F	M	A	M	J	J	A	S	O	N	D	Nesting	Hatching	Interesting	Juveniles	Adults
0761	Kemp's ridley sea turtle	S/F	E/E	COMMON				X	X	X	X	X	X	X	X		-	-	-	APR-NOV	-

Human Use Resources

Aquaculture Site	RARNUM	NAME	CONTACT	CONTACT I NFO
	5003	Halbert Fish Farm	Jack D Halbert	9025 Pineland, Channelview, TX 77530 - 713-458-8705
Facility	RARNUM	NAME	CONTACT	CONTACT I NFO
	1108	Sasol	Rich Ortiz	832-783-6600
	1112	Houston Terminal	Gerry Stratmann	281-860-4751
	1114	Channel Biorefinery and Terminals	James Driscoll	713-517-6331

1. Incident Name	2. Operational Period (Date/Time)	Assignment List ICS 204-OS
------------------	-----------------------------------	----------------------------

3. Branch	4. Division/Group
-----------	-------------------

5. Operations Personnel	
Operations Section Chief	_____
Branch Director	_____
Division/Group Supervisor	_____

6. Resources Assigned This Period "X" Indicates 204a attachment with special instructions

Resource Identifier	Leader	Contact Info #	# of Persons	Reporting Info/Notes/Remarks

7. Assignments

SAFETY NOTE: During heavy rainfall currents can become dangerous. Watch out for transients know to frequent area.

8. Site Number: 41-A	9. Quad Name Jacinto City	10. NOAA Chart # N/A	11. GLO Atlas Page # 41	12. County Harris
-------------------------	------------------------------	-------------------------	----------------------------	----------------------

13. Site Information: Greens Bayou Marsh Marsh in Green's Bayou. 1/2 NM in from the mouth of Green's Bayou is a sensitive marsh area inside a sharp bend of the bayou.		14. Latitude From: 29 45' 33"N	To:
		15. Longitude From: 95 11' 19"W	To:

16. Closest Boat Ramp River Terrace Park	17. Distance From Ramp 7.5 NM	18. Boat Type Multiple Types
---	----------------------------------	---------------------------------

19. Directions From Local Sector Take I-610 north to IH-10 east. Exit Federal Rd. Turn left on Industrial Rd. Proceed to bayou.		20. Closest Airport Houston Hobby (HOU)	
		21. Closest Helo Spot Houston Hobby (HOU)	

22. Trustee/Contact Numbers	23. Resources at Risk	24. Width of inlet 200' in ft.
USCG: (281) 464-4800 RRC: (713) 869-5001	Atlas Priority N/A	25. Water depth in ft. 20'
USCG DUTY: (800) 424-4800 TPWD: (281) 842-8100	Environmental N/A	26. Current Medium
TGLO: (800) 832-8224 NRDA: (512) 463 -9309	Economic High	27. No. of Personnel 2
TCEQ: (713) 767-3563 USFWS: (281) 286-8282		

25. Booming Strategy Recommendation Boom with 2000' of boom to protect sensitive marsh.



29. Prepared By:	30. Reviewed by (PSC)	31. Reviewed by (OSC):
Assignment List	ICS 204 OS (Geographic Response Plan)	Project Updated:

"Response strategies may need to be modified to account for changes due to seasonality, weather conditions, spill characteristics, tides and any other considerations."

1. Incident Name	2. Operational Period (Date/Time)	Assignment List ICS 204-OS
------------------	-----------------------------------	----------------------------

3. Branch	4. Division/Group
-----------	-------------------

5. Operations Personnel	
Operations Section Chief	_____
Branch Director	_____
Division/Group Supervisor	_____

6. Resources Assigned This Period "X" Indicates 204a attachment with special instructions

Resource Identifier	Leader	Contact Info #	# of Persons	Reporting Info/Notes/Remarks

7. Assignments

SAFETY NOTE: During heavy rainfall currents can become dangerous. Watch out for transients know to frequent area.

8. Site Number: 41-B	9. Quad Name Jacinto City	10. NOAA Chart # N/A	11. GLO Atlas Page # 41	12. County Harris
-------------------------	------------------------------	-------------------------	----------------------------	----------------------

13. Site Information: Upper Greens Bayou Upper Green's Bayou. Green's Bayou extends from the Houston Ship Channel inland for several miles into Northeast Houston. It is fairly deep, but narrow with mud/grass banks.	14. Latitude From: 29 46' 16"N	To:
	15. Longitude From: 95 12' 17"W	To:

16. Closest Boat Ramp River Terrace Park	17. Distance From Ramp 7 NM	18. Boat Type Multiple Types
---	--------------------------------	---------------------------------

19. Directions From Local Sector Take I-610 north to IH-10 east. Exit Federal Rd. Turn left on Industrial Rd. Proceed to bayou.	20. Closest Airport Houston Hobby (HOU)
	21. Closest Helo Spot Houston Hobby (HOU)

22. Trustee/Contact Numbers	23. Resources at Risk	24. Width of inlet 200' in ft.
USCG: (281) 464-4800 RRC: (713) 869-5001	Atlas Priority N/A	25. Water depth in ft. 20'
USCG DUTY: (800) 424-4800 TPWD: (281) 842-8100	Environmental N/A	26. Current Medium
TGLO: (800) 832-8224 NRDA: (512) 463 -9309	Economic High	27. No. of Personnel 4
TCEQ: (713) 767-3563 USFWS: (281) 286-8282		

25. Booming Strategy **Recommendation**
Boom close to spill site to prevent migration.



29. Prepared By:	30. Reviewed by (PSC)	31. Reviewed by (OSC):
Assignment List	ICS 204 OS (Geographic Response Plan)	Project Updated:

"Response strategies may need to be modified to account for changes due to seasonality, weather conditions, spill characteristics, tides and any other considerations."