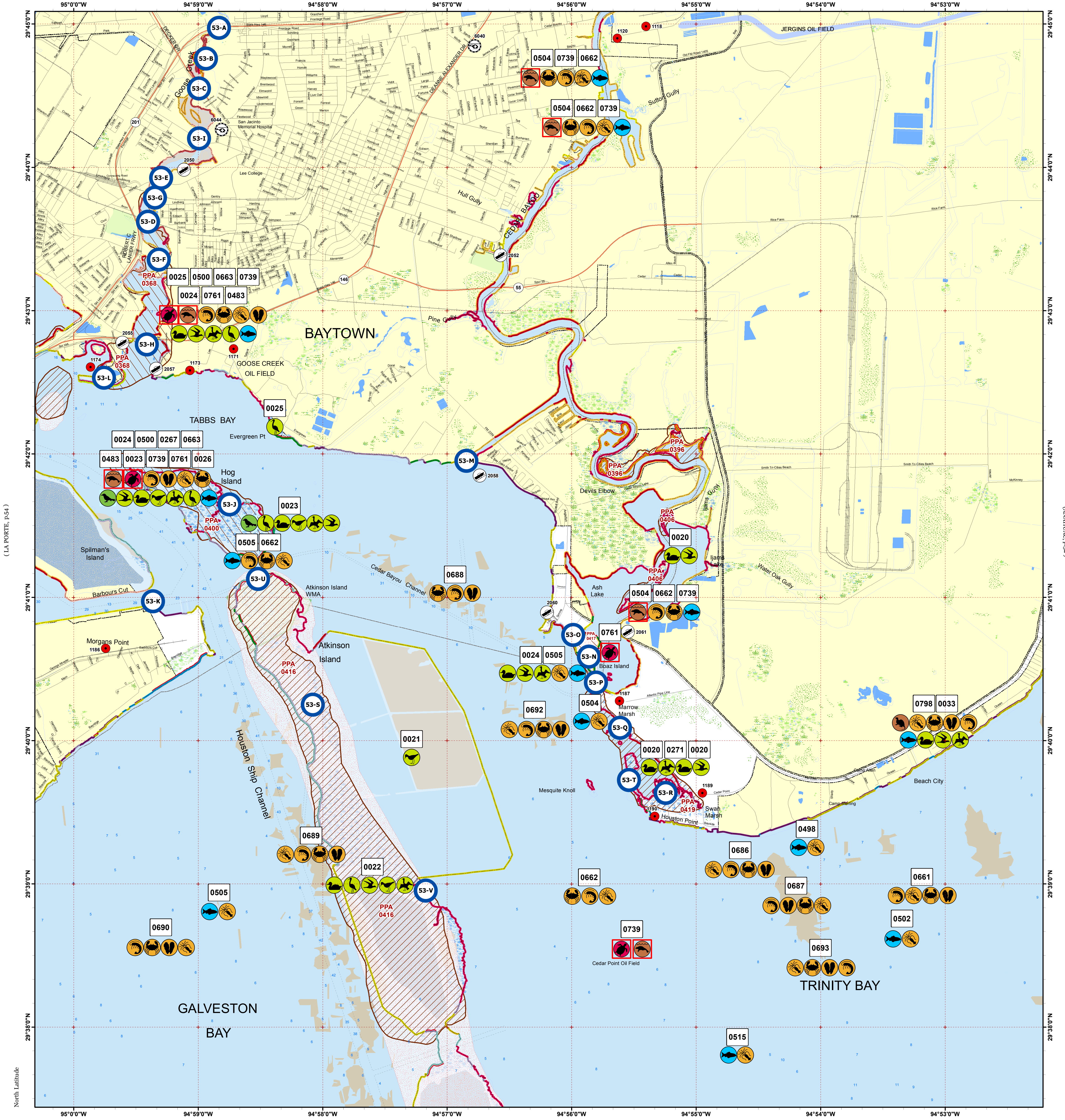


# MORGANS POINT

Click Here or Scroll Down for Associated Map Data

Click on the Geographic Response Plan Target to View the ICS Form

(MONT BELVIEU, p.39)



(LA PORTE, p.54)

(ANAHUAC, p.52)

North Latitude

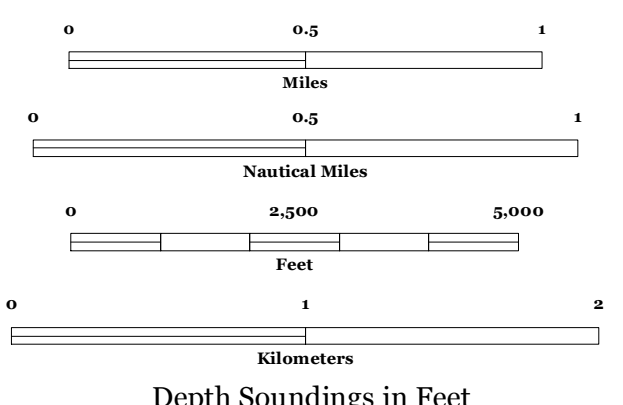
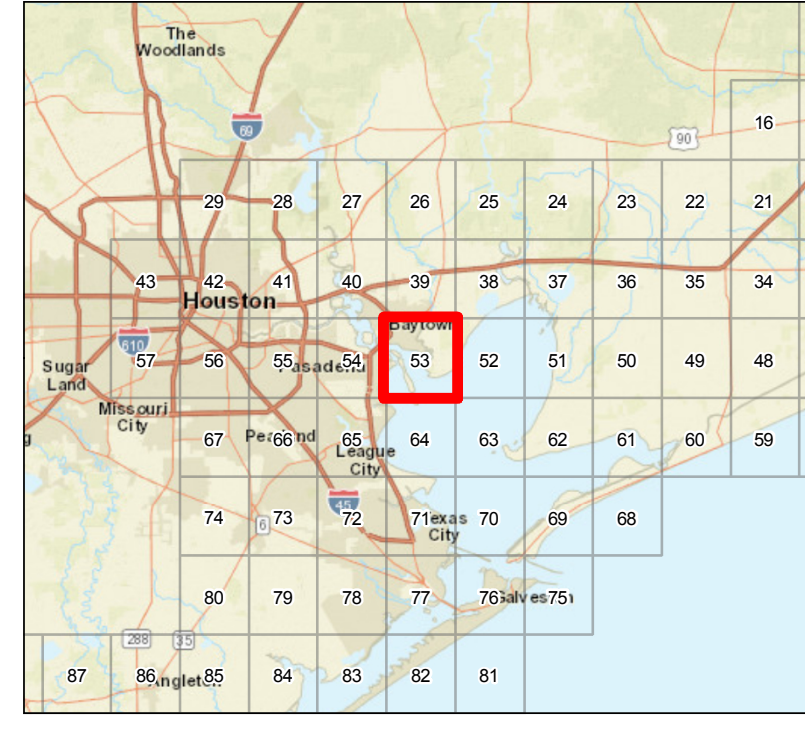
West Longitude

(BACLIFF, p.64)



Oil Spill Planning and Response Atlas 2016

The Texas General Land Office makes no representations or warranties regarding the accuracy or completeness of the information depicted on this map or the data from which it was produced. This map is not suitable for navigational purposes and does not purport to depict boundaries of private and public land.



- ### Human Use Features
- Boat Ramp
  - Facility
  - Heliport
  - Geographic Response Plan

- ### Priority Protection Areas
- HIGH
  - MEDIUM
  - LOW

- ### Map Base Layers
- State Highway
  - Railroads
  - Road
  - GIWW
  - State Parks/WMA's
  - County/Municipal Parks
  - Oysters
  - Bays
  - Salt and Brackish Marshes
  - Intertidal Scrub/Shrub
  - Beach or Tidal Flat
  - Exposed Lake Shore
  - Freshwater Marshes
  - Swamps and Flooded Woodlands
  - Willow Thickets
  - Lake / Pond
  - Perennial River
  - County Boundary
  - City Limits

- ### Species Icons Within Map Quad
- Turtle T/E
  - Mammal T/E
  - Benthic Marine
  - Small Mammal
  - Bivalve
  - Diving Bird
  - Cephalopod
  - Gull/Tern
  - Crab
  - Passerine
  - Shrimp
  - Shorebird
  - Fish
  - Wading
  - Waterfowl

- ### ENVIRONMENTAL SENSITIVITY INDEX
- 10D Mangroves and Woody Vegetation
  - 10C Freshwater Swamps
  - 10B Freshwater Marshes
  - 10A Salt and Brackish Water Marshes
  - 9 Sheltered Tidal Flats
  - 8C Sheltered Rocky/Karst Shores
  - 8D Sheltered Scarps
  - 8B Sheltered Riprap Structures
  - 8A Sheltered Solid Manmade Structures
  - 7 Exposed Tidal Flats
  - 6B Exposed Riprap Structures
  - 6A Gravel or Shell Beaches
  - 5 Mixed Sand and Gravel or Shell Beaches
  - 4 Coarse-Grained Sand Beaches
  - 3B Scarps and Steep Slopes in Sand
  - 3A Fine-Grained Sand Beaches
  - 2B Wave-Cut Clay Platforms
  - 2A Scarps and Steep Slopes in Clay
  - 1 Exposed Walls and Other Solid Structures









## Invertebrate

RARNUM	NAME	S F	T E	CONC	J	F	M	A	M	J	J	A	S	O	N	D	Spawning	Eggs	Larvae	Juveniles	Adults
	Brief squid			COMMON			X	X	X	X	X	X	X	X	X	X	MAR-DEC	MAR-DEC	MAR-DEC	MAR-DEC	MAR-DEC
	Blue crab			ABUNDANT	X	X	X	X	X	X	X	X	X	X	X	X	MAR-OCT	MAR-OCT	MAR-NOV	JAN-DEC	JAN-DEC
	Lesser blue crab			COMMON							X	X	X	X	X	X	-	-	-	JUL-OCT	SEP-DEC
	Brown shrimp			ABUNDANT	X	X	X	X	X	X	X	X	X	X	X	X	-	-	FEB-APR	APR-JAN	-
	Grass shrimp			ABUNDANT	X	X	X	X	X	X	X	X	X	X	X	X	JAN-DEC	JAN-DEC	JAN-DEC	JAN-DEC	JAN-DEC
	White shrimp			ABUNDANT	X	X	X	X	X	X	X	X	X	X	X	X	-	-	JUN-OCT	JUN-DEC	JAN-DEC
0693	Atlantic rangia			ABUNDANT	X	X	X	X	X	X	X	X	X	X	X	X	MAR-OCT	-	MAR-OCT	JAN-DEC	JAN-DEC
	Eastern oyster			LOW	X	X	X	X	X	X	X	X	X	X	X	X	MAR-DEC	MAR-DEC	-	-	JAN-DEC
	Brief squid			RARE						X	X	X	X	X	X	X	JUN-NOV	JUN-NOV	JUN-NOV	JUN-NOV	JUN-NOV
	Blue crab			HIGHLY-ABUNDANT	X	X	X	X	X	X	X	X	X	X	X	X	MAR-OCT	MAR-OCT	MAR-NOV	JAN-DEC	JAN-DEC
	Brown shrimp			COMMON		X	X	X	X	X	X	X	X	X	X	X	-	-	FEB-APR	APR-DEC	-
	Grass shrimp			ABUNDANT	X	X	X	X	X	X	X	X	X	X	X	X	JAN-DEC	JAN-DEC	JAN-DEC	JAN-DEC	JAN-DEC
	White shrimp			HIGHLY-ABUNDANT	X	X	X	X	X	X	X	X	X	X	X	X	-	-	MAY-OCT	MAY-DEC	JAN-DEC

## Marine Mammal

RARNUM	NAME	S F	T E	CONC	J	F	M	A	M	J	J	A	S	O	N	D	Mating	Calving	Pupping	Molting
0739	West Indian manatee	S/F	E/E	VERY-RARE							X	X	X				-	-	-	-

## Reptile

RARNUM	NAME	S F	T E	CONC	J	F	M	A	M	J	J	A	S	O	N	D	Nesting	Hatching	Interesting	Juveniles	Adults
0761	Kemp's ridley sea turtle	S/F	E/E	COMMON				X	X	X	X	X	X	X	X	X	-	-	-	APR-NOV	-

## Terrestrial Mammal

RARNUM	NAME	S F	T E	CONC	J	F	M	A	M	J	J	A	S	O	N	D	Nesting
0798	Northern river otter			-	X	X	X	X	X	X	X	X	X	X	X	X	N/A

### Human Use Resources

Category	RARNUM	NAME	CONTACT	CONTACT INFO
Boat Ramp	2050	Baytown Wetlands Center		
	2052	Roseland Park		harrissanjac@roselandpark
	2055	VH McBride Boat Ramp		harrissanjac@vhmcbrideramp
	2057	Foothill Oil & Gas		
	2058	Bay Oaks Harbor		
	2060	Thompson Fish Camp		harrissanjac@thompsonfishcamp
	2061	Crawley's		
Facility	1118	Cedar Bayou Electric Generating Station	Roger Morgan	281-383-4200
	1120	Enterprise Cedar Bayou Terminal	Aaron Schindler	800-530-1050
	1171	Goose Creek Field	Bobby Sellers	281-881-1406
	1173	Goose Creek	Matt Murphy	832-863-1907
	1174	Bayland Park Marina	Bob Hartquist	281-383-2273
	1186	Port of Houston Authority Barbours Cut Terminal	James Mills	713-670-3620
	1187	Cedar Marine Terminals, LP	Jared Bass	832-695-8312
	1189	Red Fish Reef A1 & A2	Craig Alexander	713-213-4077
	1190	Cedar Point	Andreana Madar	281-385-5220
Heliport	6040	SAN JACINTO METHODIST HOSPITAL - ALEXANDER	21TS	BAYTOWN, TX 77520
	6044	SAN JACINTO METHODIST HOSPITAL	00TX	BAYTOWN, TX 77521-3100

1. Incident Name	2. Operational Period (Date/Time)	Assignment List ICS 204-OS
------------------	-----------------------------------	----------------------------

3. Branch	4. Division/Group
-----------	-------------------

5. Operations Personnel	
Operations Section Chief	_____
Branch Director	_____
Division/Group Supervisor	_____

6. Resources Assigned This Period "X" Indicates 204a attachment with special instructions

Resource Identifier	Leader	Contact Info #	# of Persons	Reporting Info/Notes/Remarks

7. Assignments

**SAFETY NOTE:** Shallow water and numerous obstruction outside marked channel

8. Site Number: 53-A	9. Quad Name Morgans Point	10. NOAA Chart # 11326,11327,11338	11. GLO Atlas Page # 53	12. County Harris
-------------------------	-------------------------------	---------------------------------------	----------------------------	----------------------

13. Site Information: <b>Hwy 146 at Goose Creek</b> Hwy 146 Bridge at Goose Creek	14. Latitude From: N 29°45'05"N	To:
	15. Longitude From: W 94°58'45"W	To:

16. Closest Boat Ramp Bayland Park	17. Distance From Ramp 2 NM	18. Boat Type Flat Bottom Boat
---------------------------------------	--------------------------------	-----------------------------------

19. Directions From Local Sector I-10 East to Spur 330 South. Spur 330 South Hwy 146N. Ramp is located at Eddie V. Gray Wetlands Center	20. Closest Airport Baytown Municipal (HPY)
	21. Closest Helo Spot Baytown Municipal (HPY)

22. Trustee/Contact Numbers	23. Resources at Risk	24. Width of inlet 60' in ft.
USCG: (281) 464-4800 RRC: (713) 869-5001	Atlas Priority Medium	25. Water depth in ft. 10'
USCG DUTY: (800) 424-4800 TPWD: (281) 842-8100	Environmental Medium	26. Current Slow
TGLO: (800) 832-8224 NRDA: (512) 463 -9309	Economic N/A	27. No. of Personnel 2
TCEQ: (713) 767-3563 USFWS: (281) 286-8282		

25. Booming Strategy **Recommendation**  
Boom across Goose Creek at Hwy 146 to prevent migration of oil.

AERIAL PHOTO



ON SITE PHOTO



29. Prepared By:	30. Reviewed by (PSC)	31. Reviewed by (OSC):
Assignment List	ICS 204 OS (Geographic Response Plan)	Project Updated:

"Response strategies may need to be modified to account for changes due to seasonality, weather conditions, spill characteristics, tides and any other considerations."

1. Incident Name	2. Operational Period (Date/Time)	Assignment List ICS 204-OS
------------------	-----------------------------------	----------------------------

3. Branch	4. Division/Group
-----------	-------------------

5. Operations Personnel	
Operations Section Chief	_____
Branch Director	_____
Division/Group Supervisor	_____

6. Resources Assigned This Period						"X" Indicates 204a attachment with special instructions
Resource Identifier	Leader	Contact Info #	# of Persons	Reporting Info/Notes/Remarks		

7. Assignments
----------------

**SAFETY NOTE:** Shallow water and numerous obstruction outside marked channel

8. Site Number: 53-B	9. Quad Name Morgans Point	10. NOAA Chart # 11326,11327,11338	11. GLO Atlas Page # 53	12. County Harris
-------------------------	-------------------------------	---------------------------------------	----------------------------	----------------------

13. Site Information: <b>Park Street at Goose Creek</b> Park Street Bridge at Goose Creek			14. Latitude From: N 29°44'32 N	To:
			15. Longitude From: W 94°58'58 W	To:

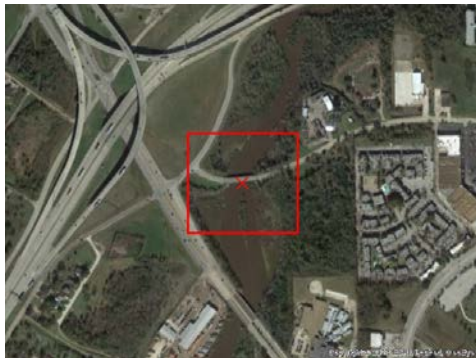
16. Closest Boat Ramp Bayland Park	17. Distance From Ramp 1.5 NM	18. Boat Type Flat Bottom Boat
---------------------------------------	----------------------------------	-----------------------------------

19. Directions From Local Sector I-10 East to Spur 330 South. Spur 330 South Hwy 146. Exit Decker Drive. Go Left and stay on 146N feeder road. Right onto Park Street. Ramp is located at Eddie V. Gray Wetlands Center		20. Closest Airport Baytown Municipal (HPY)
		21. Closest Helo Spot Baytown Municipal (HPY)

22. Trustee/Contact Numbers	23. Resources at Risk	24. Width of inlet 200' in ft.
USCG: (281) 464-4800 RRC: (713) 869-5001	Atlas Priority Medium	25. Water depth in ft. 6'
USCG DUTY: (800) 424-4800 TPWD: (281) 842-8100	Environmental Medium	26. Current Slow
TGLO: (800) 832-8224 NRDA: (512) 463 -9309	Economic N/A	27. No. of Personnel 2
TCEQ: (713) 767-3563 USFWS: (281) 286-8282		

25. Booming Strategy <b>Recommendation</b> Boom across Goose Creek at Park Street to prevent migration of oil.
---

AERIAL PHOTO



ON SITE PHOTO



29. Prepared By:	30. Reviewed by (PSC)	31. Reviewed by (OSC):
Assignment List	ICS 204 OS (Geographic Response Plan)	Project Updated:

"Response strategies may need to be modified to account for changes due to seasonality, weather conditions, spill characteristics, tides and any other considerations."



1. Incident Name	2. Operational Period (Date/Time)	Assignment List ICS 204-OS
------------------	-----------------------------------	----------------------------

3. Branch	4. Division/Group
-----------	-------------------

5. Operations Personnel	
Operations Section Chief	_____
Branch Director	_____
Division/Group Supervisor	_____

6. Resources Assigned This Period					"X" Indicates 204a attachment with special instructions
Resource Identifier	Leader	Contact Info #	# of Persons	Reporting Info/Notes/Remarks	

7. Assignments
----------------

**SAFETY NOTE:** Shallow water and numerous obstruction outside marked channel

8. Site Number: 53-C	9. Quad Name Morgans Point	10. NOAA Chart # 11326,11327,11338	11. GLO Atlas Page # 53	12. County Harris
-------------------------	-------------------------------	---------------------------------------	----------------------------	----------------------

13. Site Information: <b>Goose Creek at Decker Drive</b> Goose Creek at Decker Street, Baytown, Tx.	14. Latitude From: 29 44' 34.36"N	To:
	15. Longitude From: 94 59' 00.84"W	To:

16. Closest Boat Ramp Bayland Park	17. Distance From Ramp 1.5 NM	18. Boat Type Flat Bottom Boat
---------------------------------------	----------------------------------	-----------------------------------

19. Directions From Local Sector I-10 East to Spur 330 South. Spur 330 South Hwy 146. Exit Decker Drive. Go Left. Ramp is located at the Eddie V. Gray Wetlands Center.	20. Closest Airport Baytown Municipal (HPY)
	21. Closest Helo Spot Baytown Municipal (HPY)

22. Trustee/Contact Numbers	23. Resources at Risk	24. Width of inlet 150' in ft.
USCG: (281) 464-4800 RRC: (713) 869-5001	Atlas Priority Medium	25. Water depth in ft. 43'
USCG DUTY: (800) 424-4800 TPWD: (281) 842-8100	Environmental Medium	26. Current Slow
TGLO: (800) 832-8224 NRDA: (512) 463 -9309	Economic N/A	27. No. of Personnel 2
TCEQ: (713) 767-3563 USFWS: (281) 286-8282		

25. Booming Strategy <b>Recommendation</b> Boom across Goose Creek at Decker Drive to prevent migration of oil.
--



29. Prepared By:	30. Reviewed by (PSC)	31. Reviewed by (OSC):
Assignment List	ICS 204 OS (Geographic Response Plan)	Project Updated:

"Response strategies may need to be modified to account for changes due to seasonality, weather conditions, spill characteristics, tides and any other considerations."

1. Incident Name	2. Operational Period (Date/Time)	Assignment List ICS 204-OS
------------------	-----------------------------------	----------------------------

3. Branch	4. Division/Group
-----------	-------------------

5. Operations Personnel	
Operations Section Chief	_____
Branch Director	_____
Division/Group Supervisor	_____

6. Resources Assigned This Period "X" Indicates 204a attachment with special instructions

Resource Identifier	Leader	Contact Info #	# of Persons	Reporting Info/Notes/Remarks

7. Assignments

**SAFETY NOTE:** Shallow water and numerous obstruction outside marked channel

8. Site Number: 53-D	9. Quad Name Morgans Point	10. NOAA Chart # 11326,11327,11338	11. GLO Atlas Page # 53	12. County Harris
-------------------------	-------------------------------	---------------------------------------	----------------------------	----------------------

13. Site Information: <b>Railroad Bridge North of Main Street on Goose Creek</b> Goose Creek at 1st railroad bridge north of Main St. at Goose Creek, Baytown, Tx.	14. Latitude From: 29 44' 38.6"N	To:
	15. Longitude From: 94 59' 25" W	To:

16. Closest Boat Ramp Bayland Park	17. Distance From Ramp 1 NM	18. Boat Type Flat Bottom Boat
---------------------------------------	--------------------------------	-----------------------------------

19. Directions From Local Sector I-10 East to Spur 330 South. Spur 330 South to 146 South. Exit Main Street off 146 South.	20. Closest Airport Baytown Municipal (HPY)
	21. Closest Helo Spot Baytown Municipal (HPY)

22. Trustee/Contact Numbers	23. Resources at Risk	24. Width of inlet 110' in ft.
USCG: (281) 464-4800 RRC: (713) 869-5001	Atlas Priority Medium	25. Water depth in ft. 4'
USCG DUTY: (800) 424-4800 TPWD: (281) 842-8100	Environmental Medium	26. Current Slow
TGLO: (800) 832-8224 NRDA: (512) 463 -9309	Economic N/A	27. No. of Personnel 2
TCEQ: (713) 767-3563 USFWS: (281) 286-8282		

25. Booming Strategy **Recommendation**  
Boom across Goose Creek at RR bridge to stop the migration of oil.



29. Prepared By:	30. Reviewed by (PSC)	31. Reviewed by (OSC):
Assignment List	ICS 204 OS (Geographic Response Plan)	Project Updated:

"Response strategies may need to be modified to account for changes due to seasonality, weather conditions, spill characteristics, tides and any other considerations."

1. Incident Name	2. Operational Period (Date/Time)	Assignment List ICS 204-OS
------------------	-----------------------------------	----------------------------

3. Branch	4. Division/Group
-----------	-------------------

5. Operations Personnel	
Operations Section Chief	_____
Branch Director	_____
Division/Group Supervisor	_____

6. Resources Assigned This Period "X" Indicates 204a attachment with special instructions

Resource Identifier	Leader	Contact Info #	# of Persons	Reporting Info/Notes/Remarks

7. Assignments
----------------

**SAFETY NOTE:** Shallow water and numerous obstruction outside marked channel

8. Site Number: 53-E	9. Quad Name Morgans Point	10. NOAA Chart # 11326,11327,11338	11. GLO Atlas Page # 53	12. County Harris
-------------------------	-------------------------------	---------------------------------------	----------------------------	----------------------

13. Site Information: <b>Market Street at Goose Creek</b> Goose Creek at Market Street.	14. Latitude From: 29 43' 54.63' N	To:
	15. Longitude From: 94 59' 19.28"W	To:

16. Closest Boat Ramp Bayland Park	17. Distance From Ramp 1.5 NM	18. Boat Type Flat Bottom Boat
---------------------------------------	----------------------------------	-----------------------------------

19. Directions From Local Sector I-10 East to Spur 330 South. Spur 330 South to 146 South. Exit Texas Avenue and go left to bridge over creek	20. Closest Airport Baytown Municipal (HPY)
	21. Closest Helo Spot Baytown Municipal (HPY)

22. Trustee/Contact Numbers	23. Resources at Risk	24. Width of inlet 150' in ft.
USCG: (281) 464-4800 RRC: (713) 869-5001	Atlas Priority Medium	25. Water depth in ft. 11'
USCG DUTY: (800) 424-4800 TPWD: (281) 842-8100	Environmental Medium	26. Current Slow
TGLO: (800) 832-8224 NRDA: (512) 463 -9309	Economic N/A	27. No. of Personnel 2
TCEQ: (713) 767-3563 USFWS: (281) 286-8282		

25. Booming Strategy <b>Recommendation</b> Boom across Goose Creek at Market Street to prevent migration of oil.
---

AERIAL PHOTO



ON SITE PHOTO



29. Prepared By:	30. Reviewed by (PSC)	31. Reviewed by (OSC):
Assignment List	ICS 204 OS (Geographic Response Plan)	Project Updated:

"Response strategies may need to be modified to account for changes due to seasonality, weather conditions, spill characteristics, tides and any other considerations."

1. Incident Name	2. Operational Period (Date/Time)	Assignment List ICS 204-OS
------------------	-----------------------------------	----------------------------

3. Branch	4. Division/Group
-----------	-------------------

5. Operations Personnel	
Operations Section Chief	_____
Branch Director	_____
Division/Group Supervisor	_____

6. Resources Assigned This Period "X" Indicates 204a attachment with special instructions

Resource Identifier	Leader	Contact Info #	# of Persons	Reporting Info/Notes/Remarks

7. Assignments
----------------

**SAFETY NOTE:** Shallow water and numerous obstruction outside marked channel

8. Site Number: 53-F	9. Quad Name Morgans Point	10. NOAA Chart # 11326,11327,11338	11. GLO Atlas Page # 53	12. County Harris
-------------------------	-------------------------------	---------------------------------------	----------------------------	----------------------

13. Site Information: <b>Main Street at Goose Creek</b> Goose Creek at Main Street, Baytown, Tx.	14. Latitude From: 29 43' 21.56"N	To:
	15. Longitude From: 94 59' 19.53"W	To:

16. Closest Boat Ramp Bayland Park	17. Distance From Ramp .75 NM	18. Boat Type Multiple Types
---------------------------------------	----------------------------------	---------------------------------

19. Directions From Local Sector I-10 East to Spur 330 South. Spur 330 South to 146 South. Exit Main Street off 146 South.	20. Closest Airport Baytown Municipal (HPY)
	21. Closest Helo Spot Baytown Municipal (HPY)

22. Trustee/Contact Numbers	23. Resources at Risk	24. Width of inlet 600' in ft.
USCG: (281) 464-4800 RRC: (713) 869-5001	Atlas Priority Medium	25. Water depth in ft. 4'
USCG DUTY: (800) 424-4800 TPWD: (281) 842-8100	Environmental Medium	26. Current Slow
TGLO: (800) 832-8224 NRDA: (512) 463 -9309	Economic N/A	27. No. of Personnel 2
TCEQ: (713) 767-3563 USFWS: (281) 286-8282		

25. Booming Strategy <b>Recommendation</b> Boom across Goose Creek at Market Street to stop the migration of oil.
--



29. Prepared By:	30. Reviewed by (PSC)	31. Reviewed by (OSC):
Assignment List	ICS 204 OS (Geographic Response Plan)	Project Updated:

"Response strategies may need to be modified to account for changes due to seasonality, weather conditions, spill characteristics, tides and any other considerations."

1. Incident Name	2. Operational Period (Date/Time)	Assignment List ICS 204-OS
------------------	-----------------------------------	----------------------------

3. Branch	4. Division/Group
-----------	-------------------

5. Operations Personnel	
Operations Section Chief	_____
Branch Director	_____
Division/Group Supervisor	_____

6. Resources Assigned This Period "X" Indicates 204a attachment with special instructions

Resource Identifier	Leader	Contact Info #	# of Persons	Reporting Info/Notes/Remarks

7. Assignments
----------------

**SAFETY NOTE:** Shallow water and numerous obstruction outside marked channel

8. Site Number: 53-G	9. Quad Name Morgans Point	10. NOAA Chart # 11326,11327,11338	11. GLO Atlas Page # 53	12. County Harris
-------------------------	-------------------------------	---------------------------------------	----------------------------	----------------------

13. Site Information: <b>Railroad Bridge south of Market Street</b> Goose Creek at Railroad Bridge south of Market Street, Baytown, Tx.	14. Latitude From: 29 43' 49"N	To:	
	15. Longitude From: 94 59' 23" W	To:	

16. Closest Boat Ramp Bayland Park	17. Distance From Ramp 1 NM	18. Boat Type Flat Bottom Boat
---------------------------------------	--------------------------------	-----------------------------------

19. Directions From Local Sector I-10 East to Spur 330 South. Spur 330 South to Highway 146 South. Highway 146 South to Business 146. Right at first light	20. Closest Airport Baytown Municipal (HPY)
	21. Closest Helo Spot Baytown Municipal (HPY)

22. Trustee/Contact Numbers	23. Resources at Risk	24. Width of inlet 500' in ft.
USCG: (281) 464-4800 RRC: (713) 869-5001	Atlas Priority Medium	25. Water depth in ft. 4'
USCG DUTY: (800) 424-4800 TPWD: (281) 842-8100	Environmental Medium	26. Current Slow
TGLO: (800) 832-8224 NRDA: (512) 463 -9309	Economic N/A	27. No. of Personnel 2
TCEQ: (713) 767-3563 USFWS: (281) 286-8282		

25. Booming Strategy <b>Recommendation</b> Boom across Goose Creek at railroad bridge south of Market Street to prevent migration of oil.
--



29. Prepared By:	30. Reviewed by (PSC)	31. Reviewed by (OSC):
Assignment List	ICS 204 OS (Geographic Response Plan)	Project Updated:

"Response strategies may need to be modified to account for changes due to seasonality, weather conditions, spill characteristics, tides and any other considerations."

1. Incident Name	2. Operational Period (Date/Time)	Assignment List ICS 204-OS
------------------	-----------------------------------	----------------------------

3. Branch	4. Division/Group
-----------	-------------------

5. Operations Personnel	
Operations Section Chief	_____
Branch Director	_____
Division/Group Supervisor	_____

6. Resources Assigned This Period "X" Indicates 204a attachment with special instructions

Resource Identifier	Leader	Contact Info #	# of Persons	Reporting Info/Notes/Remarks

7. Assignments
----------------

**SAFETY NOTE:** Shallow water and numerous obstruction outside marked channel

8. Site Number: 53-H	9. Quad Name Morgans Point	10. NOAA Chart # 11326,11327,11338	11. GLO Atlas Page # 53	12. County Harris
-------------------------	-------------------------------	---------------------------------------	----------------------------	----------------------

13. Site Information: <b>Goose Creek at Business Hwy 146</b> Goose Creek at Business Hwy 146, Baytown, Tx.	14. Latitude From: 29 42' 48.69" N	To:
	15. Longitude From: 94 59' 29.60" W	To:

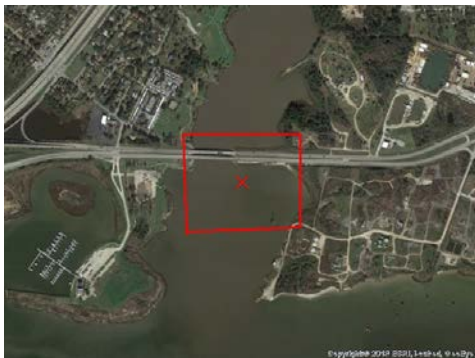
16. Closest Boat Ramp Bayland Park	17. Distance From Ramp 0.1 NM	18. Boat Type Multiple Types
---------------------------------------	----------------------------------	---------------------------------

19. Directions From Local Sector 610 North to I-10 East to Spur 330 South. Spur 330 South to Highway 146 South. Highway 146 South to Business 146. Right at first light.	20. Closest Airport Baytown Municipal (HPY)
	21. Closest Helo Spot Baytown Municipal (HPY)

22. Trustee/Contact Numbers	23. Resources at Risk	24. Width of inlet 500' in ft.
USCG: (281) 464-4800 RRC: (713) 869-5001	Atlas Priority Medium	25. Water depth in ft. 4'
USCG DUTY: (800) 424-4800 TPWD: (281) 842-8100	Environmental Medium	26. Current Slow
TGLO: (800) 832-8224 NRDA: (512) 463 -9309	Economic N/A	27. No. of Personnel 4
TCEQ: (713) 767-3563 USFWS: (281) 286-8282		

25. Booming Strategy <b>Recommendation</b> Boom across Goose Creek at Business Hwy 146 bridge to prevent oil from entering or exiting Goose Creek.
---

AERIAL PHOTO



ON SITE PHOTO



29. Prepared By:	30. Reviewed by (PSC)	31. Reviewed by (OSC):
Assignment List	ICS 204 OS (Geographic Response Plan)	Project Updated:

"Response strategies may need to be modified to account for changes due to seasonality, weather conditions, spill characteristics, tides and any other considerations."

1. Incident Name	2. Operational Period (Date/Time)	Assignment List ICS 204-OS
------------------	-----------------------------------	----------------------------

3. Branch	4. Division/Group
-----------	-------------------

5. Operations Personnel	
Operations Section Chief	_____
Branch Director	_____
Division/Group Supervisor	_____

6. Resources Assigned This Period "X" Indicates 204a attachment with special instructions

Resource Identifier	Leader	Contact Info #	# of Persons	Reporting Info/Notes/Remarks

7. Assignments
----------------

**SAFETY NOTE:** Shallow water and numerous obstruction outside marked channel

8. Site Number: 53-I	9. Quad Name Morgans Point	10. NOAA Chart # 11326,11327,11338	11. GLO Atlas Page # 53	12. County Harris
-------------------------	-------------------------------	---------------------------------------	----------------------------	----------------------

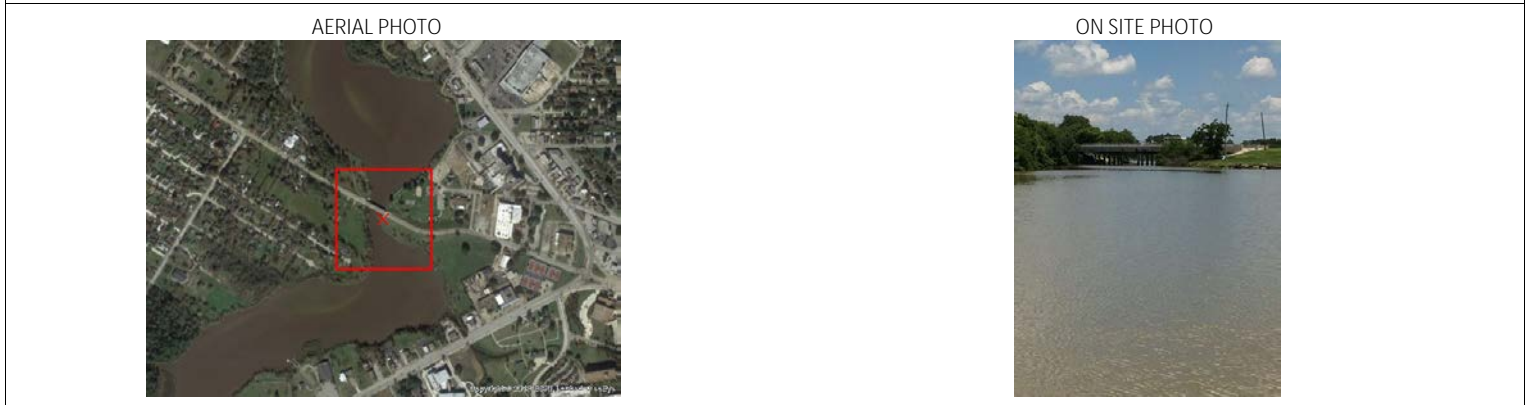
13. Site Information: <b>Texas Ave at Goose Creek</b> Texas Ave bridge at Goose Creek	14. Latitude From: 29 44' 13.03"N	To:
	15. Longitude From: 94 59' 00.32"W	To:

16. Closest Boat Ramp Bayland Park	17. Distance From Ramp 1.75 NM	18. Boat Type Flat Bottom Boat
---------------------------------------	-----------------------------------	-----------------------------------

19. Directions From Local Sector I-10 East to Spur 330 South. Spur 330 South to Highway 146 South. Highway 146 South to Market Street. Turn Left. Ramp is located a the Eddie V Gray Wetlands Center	20. Closest Airport Baytown Municipal (HPY)
	21. Closest Helo Spot Baytown Municipal (HPY)

22. Trustee/Contact Numbers	23. Resources at Risk	24. Width of inlet 100' in ft.
USCG: (281) 464-4800 RRC: (713) 869-5001	Atlas Priority Medium	25. Water depth in ft. 6'
USCG DUTY: (800) 424-4800 TPWD: (281) 842-8100	Environmental Medium	26. Current Slow
TGLO: (800) 832-8224 NRDA: (512) 463 -9309	Economic N/A	27. No. of Personnel 2
TCEQ: (713) 767-3563 USFWS: (281) 286-8282		

25. Booming Strategy <b>Recommendation</b> Boom to prevent migration of oil.
---



29. Prepared By:	30. Reviewed by (PSC)	31. Reviewed by (OSC):
Assignment List	ICS 204 OS (Geographic Response Plan)	Project Updated:

"Response strategies may need to be modified to account for changes due to seasonality, weather conditions, spill characteristics, tides and any other considerations."

1. Incident Name	2. Operational Period (Date/Time)	Assignment List ICS 204-OS
------------------	-----------------------------------	----------------------------

3. Branch	4. Division/Group
-----------	-------------------

5. Operations Personnel	
Operations Section Chief	_____
Branch Director	_____
Division/Group Supervisor	_____

6. Resources Assigned This Period						"X" Indicates 204a attachment with special instructions
Resource Identifier	Leader	Contact Info #	# of Persons	Reporting Info/Notes/Remarks		

7. Assignments
----------------

**SAFETY NOTE:** Large wakes from passing ships. Snakes and Mosquitoes abundant. Tripping hazard along shoreline.

8. Site Number: 53-J	9. Quad Name Morgans Point	10. NOAA Chart # 11326,11327,11338	11. GLO Atlas Page # 53	12. County Harris
-------------------------	-------------------------------	---------------------------------------	----------------------------	----------------------

13. Site Information: <b>Hogg Island</b> East Side of Hog Island.	14. Latitude From: 29 41' 17"N	To:
	15. Longitude From: 94 58' 26"W	To:

16. Closest Boat Ramp Sylvan Beach	17. Distance From Ramp 3.0 NM	18. Boat Type Airboat
---------------------------------------	----------------------------------	--------------------------

19. Directions From Local Sector Access is by water only. Located due East of Barbours Cut across the Houston Ship Channel.	20. Closest Airport La Porte Municipal Airport (T41)
	21. Closest Helo Spot La Porte Municipal Airport (T41)

22. Trustee/Contact Numbers	23. Resources at Risk	24. Width of inlet 7000' in ft.
USCG: (281) 464-4800 RRC: (713) 869-5001	Atlas Priority High	25. Water depth in ft. 1'
USCG DUTY: (800) 424-4800 TPWD: (281) 842-8100	Environmental High	26. Current Slow
TGLO: (800) 832-8224 NRDA: (512) 463 -9309	Economic N/A	27. No. of Personnel >6
TCEQ: (713) 767-3563 USFWS: (281) 286-8282		

25. Booming Strategy <b>Recommendation</b> Boom to protect sensitive marshes along Eastern side of island.
---



29. Prepared By:	30. Reviewed by (PSC)	31. Reviewed by (OSC):
Assignment List	ICS 204 OS (Geographic Response Plan)	Project Updated:

"Response strategies may need to be modified to account for changes due to seasonality, weather conditions, spill characteristics, tides and any other considerations."



1. Incident Name	2. Operational Period (Date/Time)	Assignment List ICS 204-OS
------------------	-----------------------------------	----------------------------

3. Branch	4. Division/Group
-----------	-------------------

5. Operations Personnel	
Operations Section Chief	_____
Branch Director	_____
Division/Group Supervisor	_____

6. Resources Assigned This Period "X" Indicates 204a attachment with special instructions

Resource Identifier	Leader	Contact Info #	# of Persons	Reporting Info/Notes/Remarks

7. Assignments

**SAFETY NOTE:** Crews operating along the Ship Channel should expect wake action as vessels pass. Located in Security Zone.

8. Site Number: 53-K	9. Quad Name Morgans Point	10. NOAA Chart # 11326,11327,11338	11. GLO Atlas Page # 53	12. County Harris
-------------------------	-------------------------------	---------------------------------------	----------------------------	----------------------

13. Site Information: <b>Barbours Cut entrance</b> Barbours Cut entrance.	14. Latitude From: 29 41' 02"N	To:	
	15. Longitude From: 94 59' 16"W	To:	

16. Closest Boat Ramp Sylvan Beach	17. Distance From Ramp 3.0 NM	18. Boat Type Multiple Types
---------------------------------------	----------------------------------	---------------------------------

19. Directions From Local Sector Take I-610 south to 225 East. Follow 225 East to South 146. Follow 146 South to Barbours Cut Blvd. Left on Barbours Cut Blvd to terminal	20. Closest Airport La Porte Municipal Airport (T41)
	21. Closest Helo Spot La Porte Municipal Airport (T41)

22. Trustee/Contact Numbers	23. Resources at Risk	24. Width of inlet 850' in ft.
USCG: (281) 464-4800 RRC: (713) 869-5001	Atlas Priority N/A	25. Water depth in ft. 20'
USCG DUTY: (800) 424-4800 TPWD: (281) 842-8100	Environmental N/A	26. Current Slow
TGLO: (800) 832-8224 NRDA: (512) 463 -9309		27. No. of Personnel 4
TCEQ: (713) 767-3563 USFWS: (281) 286-8282	Economic High	

25. Booming Strategy **Recommendation**  
Boom to prevent movement of oil into or out of Barbours Cut.



29. Prepared By:	30. Reviewed by (PSC)	31. Reviewed by (OSC):
Assignment List	ICS 204 OS (Geographic Response Plan)	Project Updated:

"Response strategies may need to be modified to account for changes due to seasonality, weather conditions, spill characteristics, tides and any other considerations."

1. Incident Name	2. Operational Period (Date/Time)	Assignment List ICS 204-OS
------------------	-----------------------------------	----------------------------

3. Branch	4. Division/Group
-----------	-------------------

5. Operations Personnel	_____
Operations Section Chief	_____
Branch Director	_____
Division/Group Supervisor	_____

6. Resources Assigned This Period "X" Indicates 204a attachment with special instructions

Resource Identifier	Leader	Contact Info #	# of Persons	Reporting Info/Notes/Remarks

7. Assignments

**SAFETY NOTE:** Crews operating along the Ship Channel should expect wake action as vessels pass.

8. Site Number: 53-L	9. Quad Name Morgans Point	10. NOAA Chart # 11326,11327,11338	11. GLO Atlas Page # 53	12. County Harris
-------------------------	-------------------------------	---------------------------------------	----------------------------	----------------------

13. Site Information: <b>Bayland Park Marina</b> Bayland Park Marina	14. Latitude From: 29 42' 31"N	To:		15. Longitude From: 95 00' 00"W	To:
---	-----------------------------------	-----	--	------------------------------------	-----

16. Closest Boat Ramp Bayland Park	17. Distance From Ramp 0.84 NM	18. Boat Type Multiple Types
---------------------------------------	-----------------------------------	---------------------------------

19. Directions From Local Sector I-10 East to Spur 330 South. Spur 330 South to Highway 146 South. Highway 146 South to Business 146. Right at first light on Business 146	20. Closest Airport Baytown Municipal (HPY)	21. Closest Helo Spot Baytown Municipal (HPY)
---	--	--

22. Trustee/Contact Numbers USCG: (281) 464-4800 RRC: (713) 869-5001 USCG DUTY: (800) 424-4800 TPWD: (281) 842-8100 TGLO: (800) 832-8224 NRDA: (512) 463 -9309 TCEQ: (713) 767-3563 USFWS: (281) 286-8282	23. Resources at Risk Atlas Priority Medium Environmental Medium Economic Low	24. Width of inlet 800' in ft. 25. Water depth in ft. 5' 26. Current Slow 27. No. of Personnel 4
---	--	---

25. Booming Strategy **Recommendation**  
Boom to protect sensitive marshes inside marina.



29. Prepared By:	30. Reviewed by (PSC)	31. Reviewed by (OSC):
Assignment List	ICS 204 OS (Geographic Response Plan)	Project Updated:

"Response strategies may need to be modified to account for changes due to seasonality, weather conditions, spill characteristics, tides and any other considerations."

1. Incident Name	2. Operational Period (Date/Time)	Assignment List ICS 204-OS
------------------	-----------------------------------	----------------------------

3. Branch	4. Division/Group
-----------	-------------------

5. Operations Personnel	
Operations Section Chief	_____
Branch Director	_____
Division/Group Supervisor	_____

6. Resources Assigned This Period						"X" Indicates 204a attachment with special instructions
Resource Identifier	Leader	Contact Info #	# of Persons	Reporting Info/Notes/Remarks		

7. Assignments
----------------

**SAFETY NOTE:** Shallow water. Water hazards include unmarked pilings and oil wells throughout the area.

8. Site Number: 53-M	9. Quad Name Morgans Point	10. NOAA Chart # 11326,11327,11338	11. GLO Atlas Page # 53	12. County Harris
-------------------------	-------------------------------	---------------------------------------	----------------------------	----------------------

13. Site Information: <b>Mallard Cut</b> Cut Between Tabbs Bay and Cedar Bayou		14. Latitude From: 29 41' 58"N	To:
		15. Longitude From: 94 56' 49"W	To:

16. Closest Boat Ramp Thompsons Bait Camp	17. Distance From Ramp 1 NM	18. Boat Type Flat Bottom Boat
--	--------------------------------	-----------------------------------

19. Directions From Local Sector Take I-610 to Hwy. 146N. Exit Bus.146, go East. Turn Right onto Evergreen Rd. Left onto Tri Cities Beach Rd.		20. Closest Airport Baytown Municipal (HPY)	
		21. Closest Helo Spot Baytown Municipal (HPY)	

22. Trustee/Contact Numbers	23. Resources at Risk	24. Width of inlet 400' in ft.
USCG: (281) 464-4800 RRC: (713) 869-5001	Atlas Priority Low	25. Water depth in ft.
USCG DUTY: (800) 424-4800 TPWD: (281) 842-8100	Environmental <b>Low</b>	26. Current Medium
TGLO: (800) 832-8224 NRDA: (512) 463 -9309	Economic Low	27. No. of Personnel 4
TCEQ: (713) 767-3563 USFWS: (281) 286-8282		

25. Booming Strategy <b>Recommendation</b> Boom to prevent oil from entering or exiting Mallard Cut.
---



29. Prepared By:	30. Reviewed by (PSC)	31. Reviewed by (OSC):
Assignment List	ICS 204 OS (Geographic Response Plan)	Project Updated:

"Response strategies may need to be modified to account for changes due to seasonality, weather conditions, spill characteristics, tides and any other considerations."

1. Incident Name	2. Operational Period (Date/Time)	Assignment List ICS 204-OS
------------------	-----------------------------------	----------------------------

3. Branch	4. Division/Group
-----------	-------------------

5. Operations Personnel	
Operations Section Chief	_____
Branch Director	_____
Division/Group Supervisor	_____

6. Resources Assigned This Period						"X" Indicates 204a attachment with special instructions
Resource Identifier	Leader	Contact Info #	# of Persons	Reporting Info/Notes/Remarks		

7. Assignments
----------------

**SAFETY NOTE:** Shallow water. Water hazards include unmarked pilings and oil wells throughout the area.

8. Site Number: 53-N	9. Quad Name Morgans Point	10. NOAA Chart # 11326,11327,11338	11. GLO Atlas Page # 53	12. County Harris
-------------------------	-------------------------------	---------------------------------------	----------------------------	----------------------

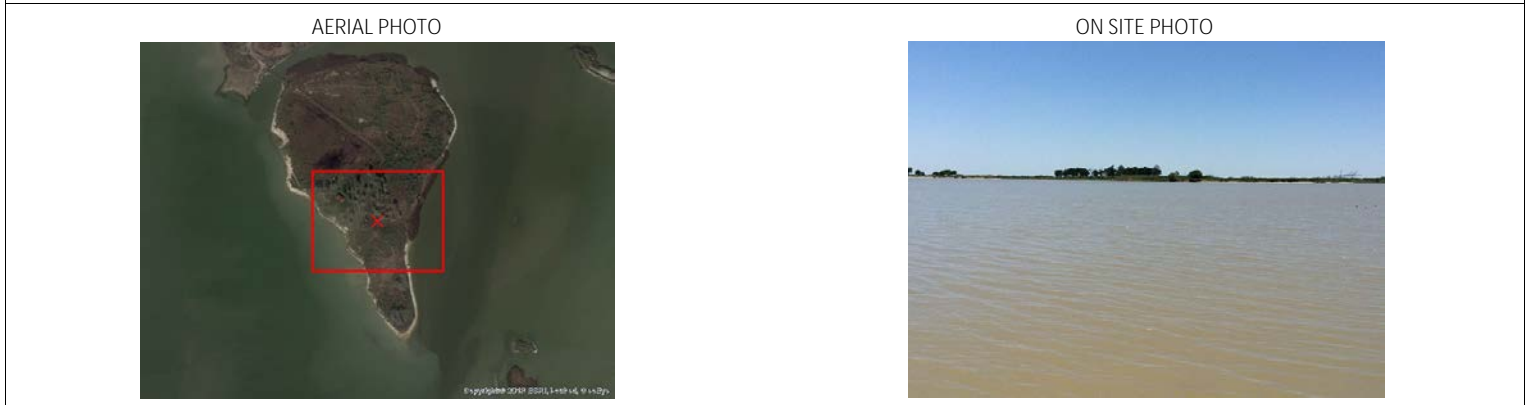
13. Site Information: <b>Boaz Island</b> Boaz Island	14. Latitude From: 29 40' 39"N	To:
	15. Longitude From: 94 56' 01"W	To:

16. Closest Boat Ramp Thompsons Bait Camp	17. Distance From Ramp 0.5 NM	18. Boat Type Airboat
--	----------------------------------	--------------------------

19. Directions From Local Sector Accessible by boat only	20. Closest Airport Baytown Municipal (HPY)
	21. Closest Helo Spot Baytown Municipal (HPY)

22. Trustee/Contact Numbers	23. Resources at Risk	24. Width of inlet in ft. N/A (approximately 2000' of fringe marsh)
USCG: (281) 464-4800 RRC: (713) 869-5001	Atlas Priority Low	25. Water depth in ft. 2'
USCG DUTY: (800) 424-4800 TPWD: (281) 842-8100	Environmental <b>High</b>	26. Current Slow
TGLO: (800) 832-8224 NRDA: (512) 463 -9309	Economic N/A	27. No. of Personnel 4
TCEQ: (713) 767-3563 USFWS: (281) 286-8282		

25. Booming Strategy <b>Recommendation</b> Boom to protect Boaz Island and associated wildlife.
--



29. Prepared By:	30. Reviewed by (PSC)	31. Reviewed by (OSC):
Assignment List	ICS 204 OS (Geographic Response Plan)	Project Updated:

"Response strategies may need to be modified to account for changes due to seasonality, weather conditions, spill characteristics, tides and any other considerations."

1. Incident Name	2. Operational Period (Date/Time)	Assignment List ICS 204-OS
------------------	-----------------------------------	----------------------------

3. Branch	4. Division/Group
-----------	-------------------

5. Operations Personnel	
Operations Section Chief	_____
Branch Director	_____
Division/Group Supervisor	_____

6. Resources Assigned This Period "X" Indicates 204a attachment with special instructions

Resource Identifier	Leader	Contact Info #	# of Persons	Reporting Info/Notes/Remarks

7. Assignments
----------------

**SAFETY NOTE:** Shallow water. Water hazards include unmarked pilings and oil wells throughout the area.

8. Site Number: 53-O	9. Quad Name Morgans Point	10. NOAA Chart # 11326,11327,11338	11. GLO Atlas Page # 53	12. County Harris
-------------------------	-------------------------------	---------------------------------------	----------------------------	----------------------

13. Site Information: <b>Cedar Bayou entrance (West)</b> Entrance to Cedar Bayou west of Boaz Island.	14. Latitude From: 29 40' 39"N	To:
	15. Longitude From: 94 56' 00"W	To:

16. Closest Boat Ramp Thompson Bait Camp	17. Distance From Ramp 0.2NM	18. Boat Type Airboat
---	---------------------------------	--------------------------

19. Directions From Local Sector Accessible by boat only.	20. Closest Airport Baytown Municipal (HPY)
	21. Closest Helo Spot Baytown Municipal (HPY)

22. Trustee/Contact Numbers	23. Resources at Risk	24. Width of inlet 100' in ft.
USCG: (281) 464-4800 RRC: (713) 869-5001	Atlas Priority Low	25. Water depth in ft. 6'
USCG DUTY: (800) 424-4800 TPWD: (281) 842-8100	Environmental <b>Low</b>	26. Current Slow
TGLO: (800) 832-8224 NRDA: (512) 463 -9309	Economic N/A	27. No. of Personnel 4
TCEQ: (713) 767-3563 USFWS: (281) 286-8282		

25. Booming Strategy <b>Recommendation</b> Boom to prevent oil from entering or exiting Cedar Bayou.
---



29. Prepared By:	30. Reviewed by (PSC)	31. Reviewed by (OSC):
Assignment List	ICS 204 OS (Geographic Response Plan)	Project Updated:

"Response strategies may need to be modified to account for changes due to seasonality, weather conditions, spill characteristics, tides and any other considerations."

1. Incident Name	2. Operational Period (Date/Time)	Assignment List ICS 204-OS
------------------	-----------------------------------	----------------------------

3. Branch	4. Division/Group
-----------	-------------------

5. Operations Personnel	
Operations Section Chief	_____
Branch Director	_____
Division/Group Supervisor	_____

6. Resources Assigned This Period "X" Indicates 204a attachment with special instructions

Resource Identifier	Leader	Contact Info #	# of Persons	Reporting Info/Notes/Remarks

7. Assignments
----------------

**SAFETY NOTE:** Shallow water. Water hazards include unmarked pilings and oil wells throughout the area.

8. Site Number: 53-P	9. Quad Name Morgans Point	10. NOAA Chart # 11326,11327,11338	11. GLO Atlas Page # 53	12. County Chambers
-------------------------	-------------------------------	---------------------------------------	----------------------------	------------------------

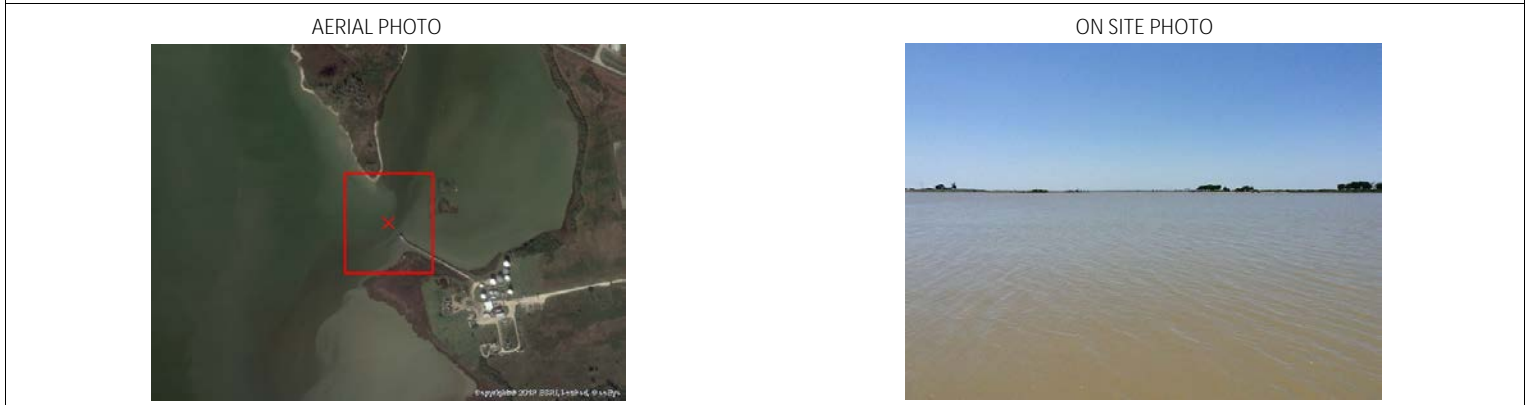
13. Site Information: <b>Cedar Bayou entrance (East of Boaz Island)</b> Entrance to Cedar Bayou East of Boaz Island.	14. Latitude From: 29-40-26N	To:	15. Longitude From: 94-55-50W	To:
---	---------------------------------	-----	----------------------------------	-----

16. Closest Boat Ramp Thompsons Bait Camp	17. Distance From Ramp 0.5 NM	18. Boat Type Airboat
--	----------------------------------	--------------------------

19. Directions From Local Sector Accessible by boat only	20. Closest Airport Baytown Municipal (HPY)	21. Closest Helo Spot Baytown Municipal (HPY)
---	--	--

22. Trustee/Contact Numbers	23. Resources at Risk	24. Width of inlet 750' in ft.
USCG: (281) 464-4800 RRC: (713) 869-5001	Atlas Priority Low	25. Water depth in ft. 16'
USCG DUTY: (800) 424-4800 TPWD: (281) 842-8100	Environmental <b>High</b>	26. Current Slow
TGLO: (800) 832-8224 NRDA: (512) 463 -9309	Economic N/A	27. No. of Personnel 2
TCEQ: (713) 767-3563 USFWS: (281) 286-8282		

25. Booming Strategy <b>Recommendation</b> Boom to prevent oil from entering or exiting Cedar Bayou
--



29. Prepared By:	30. Reviewed by (PSC)	31. Reviewed by (OSC):
Assignment List	ICS 204 OS (Geographic Response Plan)	Project Updated:

"Response strategies may need to be modified to account for changes due to seasonality, weather conditions, spill characteristics, tides and any other considerations."

1. Incident Name	2. Operational Period (Date/Time)	Assignment List ICS 204-OS
------------------	-----------------------------------	----------------------------

3. Branch	4. Division/Group
-----------	-------------------

5. Operations Personnel	
Operations Section Chief	_____
Branch Director	_____
Division/Group Supervisor	_____

6. Resources Assigned This Period "X" Indicates 204a attachment with special instructions

Resource Identifier	Leader	Contact Info #	# of Persons	Reporting Info/Notes/Remarks

7. Assignments
----------------

**SAFETY NOTE:** Shallow water. Water hazards include unmarked pilings and oil wells throughout the area.

8. Site Number: 53-Q	9. Quad Name Morgans Point	10. NOAA Chart # 11326,11327,11338	11. GLO Atlas Page # 53	12. County Chambers
-------------------------	-------------------------------	---------------------------------------	----------------------------	------------------------

13. Site Information: <b>Marrow Marsh</b> Marrow Marsh	14. Latitude From: 29 40' 19"N	To:	
	15. Longitude From: 94 55' 53"W	To:	

16. Closest Boat Ramp Thompson's Bait Camp	17. Distance From Ramp 0.5 NM	18. Boat Type Airboat
---	----------------------------------	--------------------------

19. Directions From Local Sector North on I-610, exit East on I-10 then south on FM 1405 to dead end then right.	20. Closest Airport Baytown Municipal (HPY)
	21. Closest Helo Spot Baytown Municipal (HPY)

22. Trustee/Contact Numbers	23. Resources at Risk	24. Width of inlet 2700' in ft.
USCG: (281) 464-4800 RRC: (713) 869-5001	Atlas Priority High	25. Water depth in ft. <1'
USCG DUTY: (800) 424-4800 TPWD: (281) 842-8100	Environmental High	26. Current Slow
TGLO: (800) 832-8224 NRDA: (512) 463 -9309		27. No. of Personnel 6
TCEQ: (713) 767-3563 USFWS: (281) 286-8282	Economic N/A	

25. Booming Strategy <b>Recommendation</b> Boom to protect sensitive marshes.
--



29. Prepared By:	30. Reviewed by (PSC)	31. Reviewed by (OSC):
Assignment List	ICS 204 OS (Geographic Response Plan)	Project Updated:

"Response strategies may need to be modified to account for changes due to seasonality, weather conditions, spill characteristics, tides and any other considerations."

1. Incident Name	2. Operational Period (Date/Time)	Assignment List ICS 204-OS
------------------	-----------------------------------	----------------------------

3. Branch	4. Division/Group
-----------	-------------------

5. Operations Personnel	
Operations Section Chief	_____
Branch Director	_____
Division/Group Supervisor	_____

6. Resources Assigned This Period "X" Indicates 204a attachment with special instructions

Resource Identifier	Leader	Contact Info #	# of Persons	Reporting Info/Notes/Remarks

7. Assignments
----------------

**SAFETY NOTE:** Shallow water. Water hazards include unmarked pilings and oil wells throughout the area.

8. Site Number: 53-R	9. Quad Name Morgans Point	10. NOAA Chart # 11326,11327,11338	11. GLO Atlas Page # 53	12. County Chambers
-------------------------	-------------------------------	---------------------------------------	----------------------------	------------------------

13. Site Information: <b>Swan Marsh</b> Swan Marsh West of Houston Point	14. Latitude From: 29 39' 53"N	To:	
	15. Longitude From: 94 55' 13"W	To:	

16. Closest Boat Ramp Thompson's Bait Camp	17. Distance From Ramp 1.25 NM	18. Boat Type Airboat
---	-----------------------------------	--------------------------

19. Directions From Local Sector North on I-610, exit East on I-10 then south on FM 1405 to FM2354. Left on 2354. Right on Cedar Point Rd.	20. Closest Airport Baytown Municipal (HPY)
	21. Closest Helo Spot Baytown Municipal (HPY)

22. Trustee/Contact Numbers	23. Resources at Risk	24. Width of inlet in ft. N/A (approximatley 3000' of shoreline)
USCG: (281) 464-4800 RRC: (713) 869-5001	Atlas Priority High	25. Water depth in ft. <1'
USCG DUTY: (800) 424-4800 TPWD: (281) 842-8100	Environmental High	26. Current Slow
TGLO: (800) 832-8224 NRDA: (512) 463 -9309		27. No. of Personnel 6
TCEQ: (713) 767-3563 USFWS: (281) 286-8282	Economic N/A	

25. Booming Strategy <b>Recommendation</b> Boom to protect sensitive marshes.
--



29. Prepared By:	30. Reviewed by (PSC)	31. Reviewed by (OSC):
Assignment List	ICS 204 OS (Geographic Response Plan)	Project Updated:

"Response strategies may need to be modified to account for changes due to seasonality, weather conditions, spill characteristics, tides and any other considerations."



1. Incident Name	2. Operational Period (Date/Time)	Assignment List ICS 204-OS
------------------	-----------------------------------	----------------------------

3. Branch	4. Division/Group
-----------	-------------------

5. Operations Personnel	Operations Section Chief _____
Branch Director	_____
Division/Group Supervisor	_____

6. Resources Assigned This Period						"X" Indicates 204a attachment with special instructions
Resource Identifier	Leader	Contact Info #	# of Persons	Reporting Info/Notes/Remarks		

7. Assignments
----------------

**SAFETY NOTE:** Large wakes from passing ships. Snakes and Mosquitoes abundant. Tripping hazard along shoreline.

8. Site Number: 53-S	9. Quad Name Morgans Point	10. NOAA Chart # 11326,11327,11338	11. GLO Atlas Page # 53	12. County Harris
-------------------------	-------------------------------	---------------------------------------	----------------------------	----------------------

13. Site Information: <b>Atkinson Island (North)</b> Atkinson Island north of marker 82.	14. Latitude From: 29 38' 43"N	To:	
	15. Longitude From: 94 52' 48"W	To:	

16. Closest Boat Ramp Sylvan Beach	17. Distance From Ramp 3.3NM	18. Boat Type Multiple Types
---------------------------------------	---------------------------------	---------------------------------

19. Directions From Local Sector Accessible only by boat	20. Closest Airport La Porte Municipal Airport (T41)
	21. Closest Helo Spot La Porte Municipal Airport (T41)

22. Trustee/Contact Numbers	23. Resources at Risk	24. Width of inlet in ft. N/A (approximately 5000' of shoreline)
USCG: (281) 464-4800 RRC: (713) 869-5001	Atlas Priority High	25. Water depth in ft. 2'
USCG DUTY: (800) 424-4800 TPWD: (281) 842-8100	Environmental High	26. Current Medium
TGLO: (800) 832-8224 NRDA: (512) 463 -9309	Economic N/A	27. No. of Personnel 6
TCEQ: (713) 767-3563 USFWS: (281) 286-8282		

25. Booming Strategy <b>Recommendation</b> Boom to protect extensive fringe marsh on NE end of Island.
---



29. Prepared By:	30. Reviewed by (PSC)	31. Reviewed by (OSC):
Assignment List	ICS 204 OS (Geographic Response Plan)	Project Updated:

"Response strategies may need to be modified to account for changes due to seasonality, weather conditions, spill characteristics, tides and any other considerations."

1. Incident Name	2. Operational Period (Date/Time)	Assignment List ICS 204-OS
------------------	-----------------------------------	----------------------------

3. Branch	4. Division/Group
-----------	-------------------

5. Operations Personnel	
Operations Section Chief	_____
Branch Director	_____
Division/Group Supervisor	_____

6. Resources Assigned This Period	"X" Indicates 204a attachment with special instructions
-----------------------------------	---

Resource Identifier	Leader	Contact Info #	# of Persons	Reporting Info/Notes/Remarks

7. Assignments
----------------

**SAFETY NOTE:** Shallow water. Water hazards include unmarked pilings and oil wells throughout the area.

8. Site Number: 53-T	9. Quad Name Morgans Point	10. NOAA Chart # 11326,11327,11328	11. GLO Atlas Page # 53	12. County Chambers
-------------------------	-------------------------------	---------------------------------------	----------------------------	------------------------

13. Site Information: <b>Houston Point Marsh</b> Houston Point marsh area	14. Latitude From: 29 39' 22"N	To:
	15. Longitude From: 94 55' 25"W	To:

16. Closest Boat Ramp Thompson's Bait Camp	17. Distance From Ramp 1.25 NM	18. Boat Type Airboat
---	-----------------------------------	--------------------------

19. Directions From Local Sector North on I-610, exit East on I-10 then south on FM 1405 to FM2354. Left on 2354. Right on Cedar Point Rd.	20. Closest Airport Baytown Municipal (HPY)
	21. Closest Helo Spot Baytown Municipal (HPY)

22. Trustee/Contact Numbers	23. Resources at Risk	24. Width of inlet in ft. N/A (approximately 3700' of shoreline)
USCG: (281) 464-4800 RRC: (713) 869-5001	Atlas Priority High	25. Water depth in ft. <1'
USCG DUTY: (800) 424-4800 TPWD: (281) 842-8100	Environmental High	26. Current Slow
TGLO: (800) 832-8224 NRDA: (512) 463 -9309	Economic N/A	27. No. of Personnel >6
TCEQ: (713) 767-3563 USFWS: (281) 286-8282		

25. Booming Strategy <b>Recommendation</b> Boom to protect sensitive marshes
---



29. Prepared By:	30. Reviewed by (PSC)	31. Reviewed by (OSC):
Assignment List	ICS 204 OS (Geographic Response Plan)	Project Updated:

"Response strategies may need to be modified to account for changes due to seasonality, weather conditions, spill characteristics, tides and any other considerations."

1. Incident Name	2. Operational Period (Date/Time)	Assignment List ICS 204-OS
------------------	-----------------------------------	----------------------------

3. Branch	4. Division/Group
-----------	-------------------

5. Operations Personnel	
Operations Section Chief	_____
Branch Director	_____
Division/Group Supervisor	_____

6. Resources Assigned This Period						"X" Indicates 204a attachment with special instructions
Resource Identifier	Leader	Contact Info #	# of Persons	Reporting Info/Notes/Remarks		

7. Assignments
----------------

**SAFETY NOTE:** Large wakes from passing ships. Snakes and Mosquitoes abundant. Tripping hazard along shoreline.

8. Site Number: 53-U	9. Quad Name Morgans Point	10. NOAA Chart # 11326,11327,11338	11. GLO Atlas Page # 53	12. County Harris
-------------------------	-------------------------------	---------------------------------------	----------------------------	----------------------

13. Site Information: <b>Hogg Island-Atkinson Island Cut</b> Cut between Hog and Atkinson Islands.			14. Latitude From: 29 41' 12"N	To:
			15. Longitude From: 94 58' 30"W	To:

16. Closest Boat Ramp Sylvan Beach	17. Distance From Ramp 3.0 NM	18. Boat Type Multiple Types
---------------------------------------	----------------------------------	---------------------------------

19. Directions From Local Sector Access is by water only. Located due East of Barbours Cut across the Houston Ship Channel.		20. Closest Airport La Porte Municipal Airport (T41)
		21. Closest Helo Spot La Porte Municipal Airport (T41)

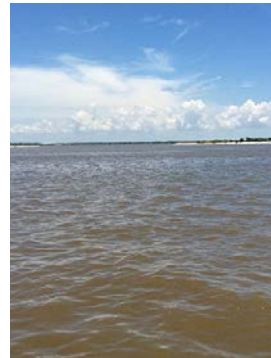
22. Trustee/Contact Numbers	23. Resources at Risk	24. Width of inlet 1150' in ft.
USCG: (281) 464-4800 RRC: (713) 869-5001	Atlas Priority High	25. Water depth in ft. 14'
USCG DUTY: (800) 424-4800 TPWD: (281) 842-8100	Environmental High	26. Current Medium
TGLO: (800) 832-8224 NRDA: (512) 463 -9309	Economic N/A	27. No. of Personnel 6
TCEQ: (713) 767-3563 USFWS: (281) 286-8282		

25. Booming Strategy <b>Recommendation</b> Boom cut between Hog and Atkinson Islands to prevent movement of oil.
---

AERIAL PHOTO



ON SITE PHOTO



29. Prepared By:	30. Reviewed by (PSC)	31. Reviewed by (OSC):
Assignment List	ICS 204 OS (Geographic Response Plan)	Project Updated:

"Response strategies may need to be modified to account for changes due to seasonality, weather conditions, spill characteristics, tides and any other considerations."

1. Incident Name	2. Operational Period (Date/Time)	Assignment List ICS 204-OS
------------------	-----------------------------------	----------------------------

3. Branch	4. Division/Group
-----------	-------------------

5. Operations Personnel	
Operations Section Chief	_____
Branch Director	_____
Division/Group Supervisor	_____

6. Resources Assigned This Period						"X" Indicates 204a attachment with special instructions
Resource Identifier	Leader	Contact Info #	# of Persons	Reporting Info/Notes/Remarks		

7. Assignments
----------------

**SAFETY NOTE:** Large wakes from passing ships. Snakes and Mosquitoes abundant. Tripping hazard along shoreline.

8. Site Number: 53-V	9. Quad Name Bacliff	10. NOAA Chart # 11326,11327	11. GLO Atlas Page # 53	12. County Harris
-------------------------	-------------------------	---------------------------------	----------------------------	----------------------

13. Site Information: <b>Atkinson Island (South)</b> Atkinson Island: fringe marsh along Southeastern end of Atkinson Island.			14. Latitude From: 29 38' 58"N	To:
			15. Longitude From: 94 57' 05"W	To:

16. Closest Boat Ramp Sylvan Beach	17. Distance From Ramp 4NM	18. Boat Type Multiple Types
---------------------------------------	-------------------------------	---------------------------------

19. Directions From Local Sector Atkinson Island is only accessible by boat.		20. Closest Airport La Porte Municipal Airport (T41)
		21. Closest Helo Spot La Porte Municipal Airport (T41)

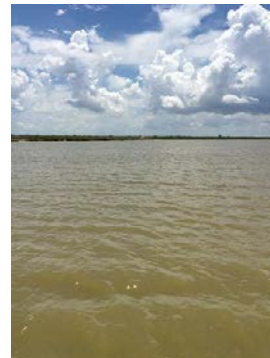
22. Trustee/Contact Numbers	23. Resources at Risk	24. Width of inlet 1500' in ft.
USCG: (281) 464-4800 RRC: (713) 869-5001	Atlas Priority Medium	25. Water depth in ft. 2'
USCG DUTY: (800) 424-4800 TPWD: (281) 842-8100	Environmental High	26. Current Slow
TGLO: (800) 832-8224 NRDA: (512) 463 -9309	Economic N/A	27. No. of Personnel 4
TCEQ: (713) 767-3563 USFWS: (281) 286-8282		

25. Booming Strategy <b>Recommendation</b> Boom to protect marsh entrance on Southeastern side of Atkinson Island. Deploy backup boom as necessary.
--

AERIAL PHOTO



ON SITE PHOTO



29. Prepared By:	30. Reviewed by (PSC)	31. Reviewed by (OSC):
Assignment List	ICS 204 OS (Geographic Response Plan)	Project Updated:

"Response strategies may need to be modified to account for changes due to seasonality, weather conditions, spill characteristics, tides and any other considerations."