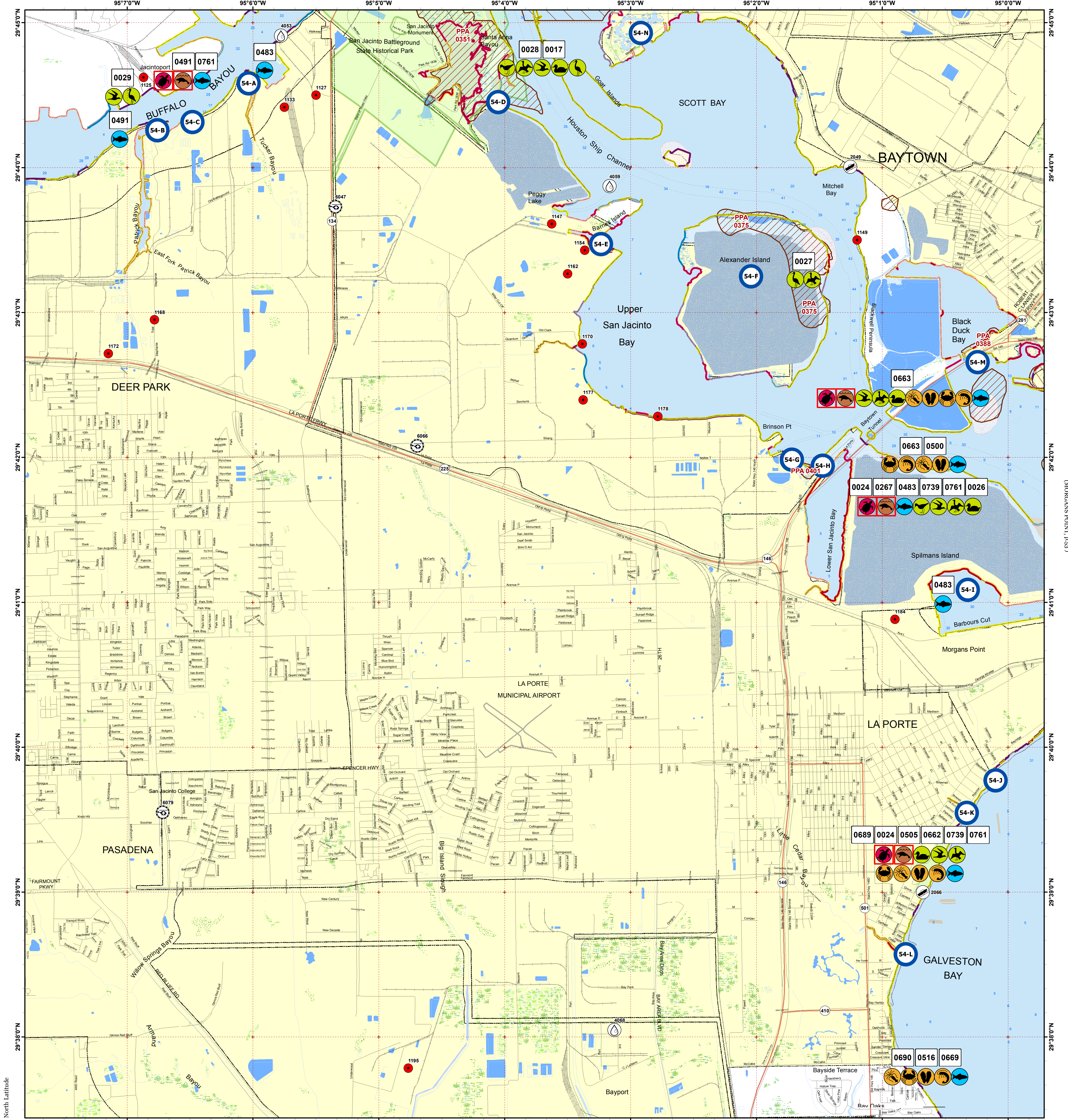


# LA PORTE

(HIGHLANDS, p.40)

Click Here or Scroll Down for Associated Map Data

Click on the Geographic Response Plan Target to View the ICS Form



(PASADENA, P.55)

(MORGANS POINT, P.53)

West Longitude

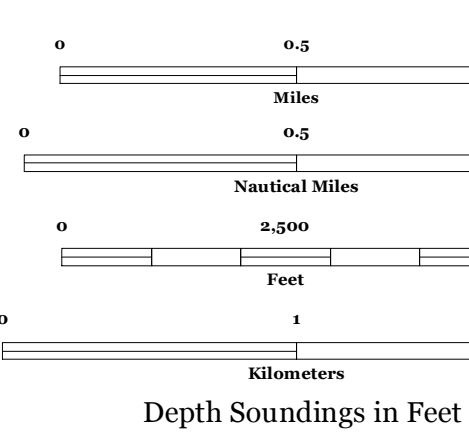
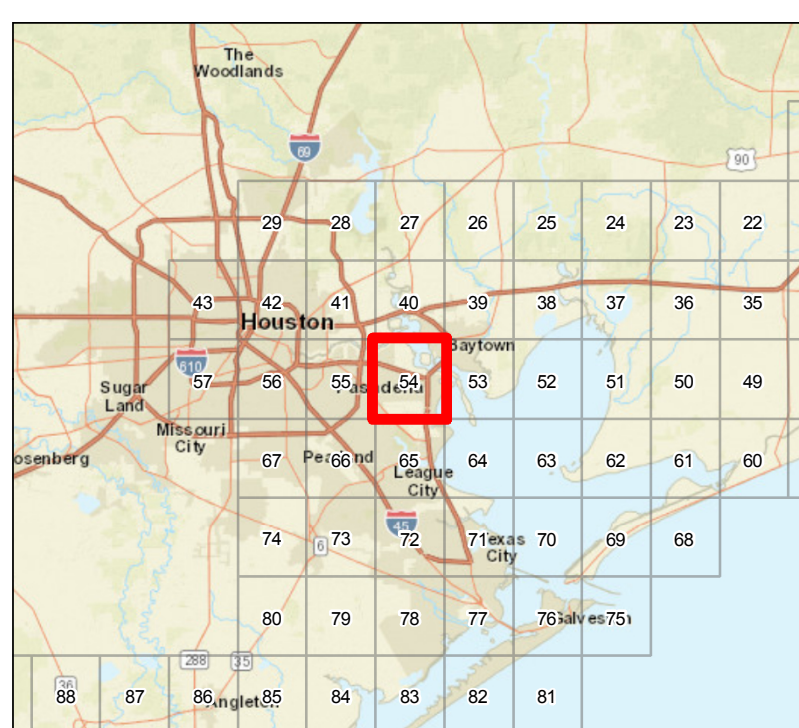
(LEAGUE CITY, p.65)



Oil Spill Planning and Response Atlas

2016

The Texas General Land Office makes no representations or warranties regarding the accuracy or completeness of the information depicted on this map or the data from which it was produced. This map is not suitable for navigational purposes and does not purport to depict boundaries of private and public land.



### Human Use Features

- Boat Ramp
- Facility
- Heliport
- Water Intake
- Geographic Response Plan

### Priority Protection Areas

- HIGH
- LOW

### Map Base Layers

- State Highway
- Railroads
- Airport Runways
- Road
- GIWW
- State Parks/WMA's
- County/Municipal Parks
- Oysters
- Salt and Brackish Marshes
- Beach or Tidal Flat
- Exposed Lake Shore
- Freshwater Marshes
- Swamps and Flooded Woodlands
- Willow Thickets
- Lake / Pond
- Perennial River
- County Boundary
- City Limits

### Species Icons Within Map Quad

- Turtle T/E
- Mammal T/E
- Benthic Marine
- Bivalve
- Cephalopod
- Crab
- Shrimp
- Fish
- Diving Bird
- Gull/Tern
- Shorebird
- Wading
- Waterfowl

### ENVIRONMENTAL SENSITIVITY INDEX

- 10D Mangroves and Woody Vegetation
- 10C Freshwater Swamps
- 10B Freshwater Marshes
- 10A Salt and Brackish Water Marshes
- 9 Sheltered Tidal Flats
- 8C Sheltered Rocky/Karst Shores
- 8D Sheltered Scarps
- 8B Sheltered Riprap Structures
- 8A Sheltered Solid Manmade Structures
- 7 Exposed Tidal Flats
- 6B Exposed Riprap Structures
- 6A Gravel or Shell Beaches
- 5 Mixed Sand and Gravel or Shell Beaches
- 4 Coarse-Grained Sand Beaches
- 3B Scraps and Steep Slopes in Sand
- 3A Fine-Grained Sand Beaches
- 2B Wave-Cut Clay Platforms
- 2A Scraps and Steep Slopes in Clay
- 1 Exposed Walls and Other Solid Structures





## Invertebrate

RARNUM	NAME	S F	T E	CONC	J	F	M	A	M	J	J	A	S	O	N	D	Spawning	Eggs	Larvae	Juveniles	Adults
	Blue crab			HIGHLY-ABUNDANT	X	X	X	X	X	X	X	X	X	X	X	X	MAR-OCT	MAR-OCT	MAR-NOV	JAN-DEC	JAN-DEC
	Gulf stone crab			RARE	X	X	X	X	X	X	X	X	X	X	X	X	-	-	-	JAN-DEC	JAN-DEC
	Brown shrimp			ABUNDANT	X	X	X	X	X	X	X	X	X	X	X	X	-	-	FEB-APR	JAN-DEC	-
	Grass shrimp			ABUNDANT	X	X	X	X	X	X	X	X	X	X	X	X	JAN-DEC	JAN-DEC	JAN-DEC	JAN-DEC	JAN-DEC
	White shrimp			HIGHLY-ABUNDANT	X	X	X	X	X	X	X	X	X	X	X	X	-	-	JUN-OCT	JAN-DEC	NOV-SEP
0689	Eastern oyster			REEF	X	X	X	X	X	X	X	X	X	X	X	X	MAR-DEC	MAR-DEC	-	-	JAN-DEC
	Brief squid			COMMON			X	X	X	X	X	X	X	X	X	X	MAR-DEC	MAR-DEC	MAR-DEC	MAR-DEC	MAR-DEC
	Blue crab			ABUNDANT	X	X	X	X	X	X	X	X	X	X	X	X	MAR-OCT	MAR-OCT	MAR-NOV	JAN-DEC	JAN-DEC
	Lesser blue crab			COMMON						X	X	X	X	X	X	X	-	-	-	JUL-OCT	SEP-DEC
	Brown shrimp			ABUNDANT	X	X	X	X	X	X	X	X	X	X	X	X	-	-	FEB-APR	APR-JAN	-
	Grass shrimp			ABUNDANT	X	X	X	X	X	X	X	X	X	X	X	X	JAN-DEC	JAN-DEC	JAN-DEC	JAN-DEC	JAN-DEC
	White shrimp			ABUNDANT	X	X	X	X	X	X	X	X	X	X	X	X	-	-	JUN-OCT	JUN-DEC	JAN-DEC
0690	Eastern oyster			UNCONSOLIDATED	X	X	X	X	X	X	X	X	X	X	X	X	MAR-DEC	MAR-DEC	-	-	JAN-DEC
	Brief squid			COMMON			X	X	X	X	X	X	X	X	X	X	MAR-DEC	MAR-DEC	MAR-DEC	MAR-DEC	MAR-DEC
	Blue crab			ABUNDANT	X	X	X	X	X	X	X	X	X	X	X	X	MAR-OCT	MAR-OCT	MAR-NOV	JAN-DEC	JAN-DEC
	Lesser blue crab			COMMON						X	X	X	X	X	X	X	-	-	-	JUL-OCT	SEP-DEC
	Brown shrimp			ABUNDANT	X	X	X	X	X	X	X	X	X	X	X	X	-	-	FEB-APR	APR-JAN	-
	Grass shrimp			ABUNDANT	X	X	X	X	X	X	X	X	X	X	X	X	JAN-DEC	JAN-DEC	JAN-DEC	JAN-DEC	JAN-DEC
	White shrimp			ABUNDANT	X	X	X	X	X	X	X	X	X	X	X	X	-	-	JUN-OCT	JUN-DEC	JAN-DEC

## Marine Mammal

RARNUM	NAME	S F	T E	CONC	J	F	M	A	M	J	J	A	S	O	N	D	Mating	Calving	Pupping	Molting
0739	West Indian manatee	S/F	E/E	VERY-RARE						X	X	X					-	-	-	-

## Reptile

RARNUM	NAME	S F	T E	CONC	J	F	M	A	M	J	J	A	S	O	N	D	Nesting	Hatching	Interesting	Juveniles	Adults	
0761	Kemp's ridley sea turtle	S/F	E/E	COMMON				X	X	X	X	X	X	X	X	X		-	-	-	APR-NOV	-

## Human Use Resources

Category	RARNUM	NAME	CONTACT	CONTACT INFO
Boat Ramp	2049	ExxonMobile		
	2066	Sylvan Beach Boat Ramp		harrissanjac@sylvanbeach
Facility	1125	Cargill, Inc.- GOSC NA	Rashad Hart	281-452-0901
	1127	Vopak Terminal Deer Park	Clifton Ferrell	281-604-6045
	1133	Intercontinental Terminals Company	Carl Holley	281-884-0339
	1147	S. R. Bertron Electric Generating Station	Roger McConnell	281-867-2100
	1149	Exxonmobil Baytown Complex	Site Superintendent	281-834-5305
	1154	Battleground Oil Specialty Terminal Company (BOSTCO)	Pete Almaraz	281-946-1600
	1162	Enterprise Bertron Terminal	Aaron Schindler	800-530-1050
	1168	Lubrizol Deer Park Facility	Tanya Travis	281-479-2851
	1170	LyondellBasell Acetyls	Scott Snapp	713-209-1280
	1172	Shell Deer Park Refining Company	Edward Grosse	713-246-7301
	1177	Linde Gas La Porte Syngas Plant	Jake Leavins	713-767-4179
	1178	Intergulf Marine Facility	Joey King	281-474-4210
Heliport	6047	LA PORTE PLANT	61TS	DEER PARK, TX 77536
	6066	RENTAL TOOLS	42TA	BLADENSBURG, MD 20710
	6079	SAN JACINTO COLLEGE CENTRAL CAMPUS	XS16	PASADENA, TX 77501
Water Intake	4053	PAKTANK CORPORATION-DEER PARK		
	4059	HOUSTON L&P-SAM BERTRAM		
	4068			

1. Incident Name	2. Operational Period (Date/Time)	Assignment List ICS 204-OS
------------------	-----------------------------------	----------------------------

3. Branch	4. Division/Group
-----------	-------------------

5. Operations Personnel	
Operations Section Chief	_____
Branch Director	_____
Division/Group Supervisor	_____

6. Resources Assigned This Period						"X" Indicates 204a attachment with special instructions
Resource Identifier	Leader	Contact Info #	# of Persons	Reporting Info/Notes/Remarks		

7. Assignments
----------------

**SAFETY NOTE:** Responders should exercise caution due to frequent vessel movement/vessel wake and submerged object.

8. Site Number: 54-A	9. Quad Name La Porte	10. NOAA Chart # 11329	11. GLO Atlas Page # 54	12. County Harris
-------------------------	--------------------------	---------------------------	----------------------------	----------------------

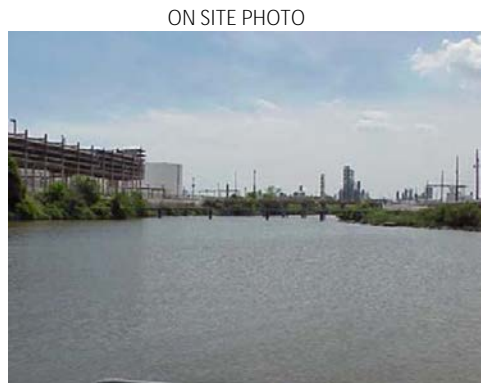
13. Site Information: <b>Tucker Bayou</b> Entrance to Tucker Bayou is located on the south side of Buffalo Bayou west of San Jacinto Battleground State Park.	14. Latitude From: 29 44' 30" N	To:	
	15. Longitude From: 95 06' 00" W	To:	

16. Closest Boat Ramp River Terrace Park	17. Distance From Ramp 3.4 NM	18. Boat Type Multiple Types
---	----------------------------------	---------------------------------

19. Directions From Local Sector Take I-610 north to SH 225, go East. Exit Tidal Rd. Proceed to Tucker Bayou.	20. Closest Airport La Porte Municipal Airport (T41)
	21. Closest Helo Spot La Porte Municipal Airport (T41)

22. Trustee/Contact Numbers	23. Resources at Risk	24. Width of inlet 300' in ft.
USCG: (281) 464-4800 RRC: (713) 869-5001	Atlas Priority N/A	25. Water depth in ft. 4'
USCG DUTY: (800) 424-4800 TPWD: (281) 842-8100	Environmental N/A	26. Current Slow
TGLO: (800) 832-8224 NRDA: (512) 463 -9309	Economic High	27. No. of Personnel 2
TCEQ: (713) 767-3563 USFWS: (281) 286-8282		

25. Booming Strategy <b>Recommendation</b> Boom to prevent oil from entering or exiting Tucker Bayou
---



29. Prepared By:	30. Reviewed by (PSC)	31. Reviewed by (OSC):
Assignment List	ICS 204 OS (Geographic Response Plan)	Project Updated:

"Response strategies may need to be modified to account for changes due to seasonality, weather conditions, spill characteristics, tides and any other considerations."

1. Incident Name	2. Operational Period (Date/Time)	Assignment List ICS 204-OS
------------------	-----------------------------------	----------------------------

3. Branch	4. Division/Group
-----------	-------------------

5. Operations Personnel	Operations Section Chief _____
Branch Director _____	Division/Group Supervisor _____

6. Resources Assigned This Period					"X" Indicates 204a attachment with special instructions
Resource Identifier	Leader	Contact Info #	# of Persons	Reporting Info/Notes/Remarks	

7. Assignments
----------------

**SAFETY NOTE:** Responders should exercise caution due to frequent vessel movement/vessel wake and submerged object.

8. Site Number: 54-B	9. Quad Name La Porte	10. NOAA Chart # 11329	11. GLO Atlas Page # 54	12. County Harris
-------------------------	--------------------------	---------------------------	----------------------------	----------------------

13. Site Information: <b>Patrick Bayou</b> Entrance to Patrick Bayou is located on the south side of Buffalo Bayou south of Jacintoport	14. Latitude From: 29 44' 17" N	To:	
	15. Longitude From: 95 06' 40" W	To:	

16. Closest Boat Ramp River Terrace Park	17. Distance From Ramp 4 NM	18. Boat Type Multiple Types
---	--------------------------------	---------------------------------

19. Directions From Local Sector Take I-610 north to SH 225, go East. Exit Tidal Rd. Proceed to bayou.	20. Closest Airport La Porte Municipal Airport (T41)		
	21. Closest Helo Spot La Porte Municipal Airport (T41)		

22. Trustee/Contact Numbers USCG: (281) 464-4800 RRC: (713) 869-5001 USCG DUTY: (800) 424-4800 TPWD: (281) 842-8100 TGLO: (800) 832-8224 NRDA: (512) 463 -9309 TCEQ: (713) 767-3563 USFWS: (281) 286-8282	23. Resources at Risk Atlas Priority N/A Environmental N/A Economic High	24. Width of inlet 340' in ft. 25. Water depth in ft. 6' 26. Current Slow 27. No. of Personnel 2
---	---	---

25. Booming Strategy <b>Recommendation</b> Boom to prevent oil from entering or exiting Patrick Bayou
--



29. Prepared By: Assignment List	30. Reviewed by (PSC) ICS 204 OS (Geographic Response Plan)	31. Reviewed by (OSC): Project Updated:
-------------------------------------	--	--

"Response strategies may need to be modified to account for changes due to seasonality, weather conditions, spill characteristics, tides and any other considerations."

1. Incident Name	2. Operational Period (Date/Time)	Assignment List ICS 204-OS
------------------	-----------------------------------	----------------------------

3. Branch	4. Division/Group
-----------	-------------------

5. Operations Personnel	
Operations Section Chief	_____
Branch Director	_____
Division/Group Supervisor	_____

6. Resources Assigned This Period					"X" Indicates 204a attachment with special instructions
Resource Identifier	Leader	Contact Info #	# of Persons	Reporting Info/Notes/Remarks	

7. Assignments
----------------

**SAFETY NOTE:** Responders should exercise caution due to frequent vessel movement/vessel wake and submerged object.

8. Site Number: 54-C	9. Quad Name La Porte	10. NOAA Chart # 11329	11. GLO Atlas Page # 54	12. County Harris
-------------------------	--------------------------	---------------------------	----------------------------	----------------------

13. Site Information: <b>Ditch East of Patrick Bayou</b> Entrance is located on the south side of Buffalo Bayou east of Patrick Bayou.		14. Latitude From: 29 44' 19" N	To:
		15. Longitude From: 095 06' 30" W	To:

16. Closest Boat Ramp River Terrace Park	17. Distance From Ramp 3.6 NM	18. Boat Type Multiple Types
---	----------------------------------	---------------------------------

19. Directions From Local Sector Take I-610 north to SH 225, go East. Exit Tidal Rd. Proceed to ditch east of Patrick Bayou.		20. Closest Airport La Porte Municipal Airport (T41)	
		21. Closest Helo Spot La Porte Municipal Airport (T41)	

22. Trustee/Contact Numbers	23. Resources at Risk	24. Width of inlet 60' in ft.
USCG: (281) 464-4800 RRC: (713) 869-5001	Atlas Priority N/A	25. Water depth in ft. 1'
USCG DUTY: (800) 424-4800 TPWD: (281) 842-8100	Environmental N/A	26. Current Slow
TGLO: (800) 832-8224 NRDA: (512) 463 -9309	Economic High	27. No. of Personnel 2
TCEQ: (713) 767-3563 USFWS: (281) 286-8282		

25. Booming Strategy <b>Recommendation</b> Boom to prevent oil from entering or exiting drainage ditch
---

AERIAL PHOTO



ON SITE PHOTO



29. Prepared By:	30. Reviewed by (PSC)	31. Reviewed by (OSC):
Assignment List	ICS 204 OS (Geographic Response Plan)	Project Updated:

"Response strategies may need to be modified to account for changes due to seasonality, weather conditions, spill characteristics, tides and any other considerations."

1. Incident Name	2. Operational Period (Date/Time)	Assignment List ICS 204-OS
------------------	-----------------------------------	----------------------------

3. Branch	4. Division/Group
-----------	-------------------

5. Operations Personnel	
Operations Section Chief	_____
Branch Director	_____
Division/Group Supervisor	_____

6. Resources Assigned This Period "X" Indicates 204a attachment with special instructions

Resource Identifier	Leader	Contact Info #	# of Persons	Reporting Info/Notes/Remarks

7. Assignments

**SAFETY NOTE:** Responders should exercise caution due to frequent vessel movement/vessel wake and submerged object - shallow water.

8. Site Number: 54-D	9. Quad Name La Porte	10. NOAA Chart # 11329	11. GLO Atlas Page # 54	12. County Harris
-------------------------	--------------------------	---------------------------	----------------------------	----------------------

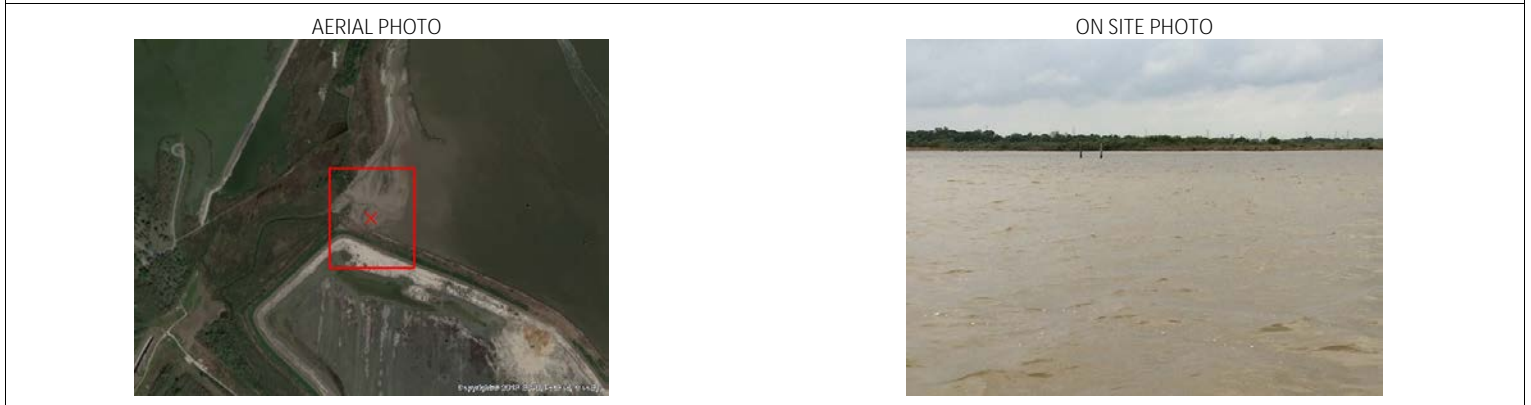
13. Site Information: <b>Santa Anne Bayou Marsh</b> Entrance to San Jacinto Monument park marsh. Located on the southeast side of the San Jacinto Battleground StatePark - Bird habitat.	14. Latitude From: 29 44' 28"N	To:	
	15. Longitude From: 095 04' 01"W	To:	

16. Closest Boat Ramp River Terrace Park	17. Distance From Ramp 4.25 NM	18. Boat Type Multiple Types
---	-----------------------------------	---------------------------------

19. Directions From Local Sector Take I-610 north to SH 225, go East to Independence Pkwy. Turn left. Access through state park.	20. Closest Airport La Porte Municipal Airport (T41)
	21. Closest Helo Spot La Porte Municipal Airport (T41)

22. Trustee/Contact Numbers	23. Resources at Risk	24. Width of inlet 2500' in ft.
USCG: (281) 464-4800 RRC: (713) 869-5001	Atlas Priority High	25. Water depth in ft. <1'
USCG DUTY: (800) 424-4800 TPWD: (281) 842-8100	Environmental High	26. Current Slow
TGLO: (800) 832-8224 NRDA: (512) 463 -9309		27. No. of Personnel 4
TCEQ: (713) 767-3563 USFWS: (281) 286-8282	Economic N/A	

25. Booming Strategy **Recommendation**  
Area has frequent shoreline changes booming may be difficult. Note: CCA has repositioned 200' of 18' boom at position 29-44-27N 095-04-06W.



29. Prepared By:	30. Reviewed by (PSC)	31. Reviewed by (OSC):
Assignment List	ICS 204 OS (Geographic Response Plan)	Project Updated:

"Response strategies may need to be modified to account for changes due to seasonality, weather conditions, spill characteristics, tides and any other considerations."



1. Incident Name	2. Operational Period (Date/Time)	Assignment List ICS 204-OS
------------------	-----------------------------------	----------------------------

3. Branch	4. Division/Group
-----------	-------------------

5. Operations Personnel	_____
Operations Section Chief	_____
Branch Director	_____
Division/Group Supervisor	_____

6. Resources Assigned This Period					"X" Indicates 204a attachment with special instructions
Resource Identifier	Leader	Contact Info #	# of Persons	Reporting Info/Notes/Remarks	

7. Assignments
----------------

**SAFETY NOTE:** Responders should exercise caution due to frequent vessel movement/vessel wake and submerged object.

8. Site Number: 54-E	9. Quad Name La Porte	10. NOAA Chart # 11329	11. GLO Atlas Page # 54	12. County Harris
-------------------------	--------------------------	---------------------------	----------------------------	----------------------

13. Site Information: <b>Barnes Island cove</b> Un-named cove. Entrance is located southwest of Barnes Island in the northwest corner of Upper San Jacinto Bay.	14. Latitude From: 29 43' 28"N	To:	
	15. Longitude From: 095 03' 13"W	To:	

16. Closest Boat Ramp River Terrace Park	17. Distance From Ramp 4.75 NM	18. Boat Type Multiple Types
---	-----------------------------------	---------------------------------

19. Directions From Local Sector Take I-610 north to SH 225, go East to Miller Cut -Off Rd. South to site.	20. Closest Airport La Porte Municipal Airport (T41)		21. Closest Helo Spot La Porte Municipal Airport (T41)
---	---	--	---

22. Trustee/Contact Numbers USCG: (281) 464-4800 RRC: (713) 869-5001 USCG DUTY: (800) 424-4800 TPWD: (281) 842-8100 TGLO: (800) 832-8224 NRDA: (512) 463 -9309 TCEQ: (713) 767-3563 USFWS: (281) 286-8282	23. Resources at Risk Atlas Priority Low Environmental <b>Low</b> Economic Low	24. Width of inlet 800' in ft. 25. Water depth in ft. 2' 26. Current Slow 27. No. of Personnel 2
---	---	--

25. Booming Strategy <b>Recommendation</b> Boom to prevent oil from entering cove
--



29. Prepared By: Assignment List	30. Reviewed by (PSC) ICS 204 OS (Geographic Response Plan)	31. Reviewed by (OSC): Project Updated:
-------------------------------------	--	--

"Response strategies may need to be modified to account for changes due to seasonality, weather conditions, spill characteristics, tides and any other considerations."

1. Incident Name	2. Operational Period (Date/Time)	Assignment List ICS 204-OS
------------------	-----------------------------------	----------------------------

3. Branch	4. Division/Group
-----------	-------------------

5. Operations Personnel	
Operations Section Chief	_____
Branch Director	_____
Division/Group Supervisor	_____

6. Resources Assigned This Period					"X" Indicates 204a attachment with special instructions
Resource Identifier	Leader	Contact Info #	# of Persons	Reporting Info/Notes/Remarks	

7. Assignments
----------------

**SAFETY NOTE:** Responders should exercise caution due to frequent vessel movement/vessel wake and snakes.

8. Site Number: 54-F	9. Quad Name La Porte	10. NOAA Chart # 11329	11. GLO Atlas Page # 54	12. County Harris
-------------------------	--------------------------	---------------------------	----------------------------	----------------------

13. Site Information: <b>Alexander Island</b> Alexander Island is located west of Baytown and east of Upper San Jacinto Bay. Area is high priority rookery area - nesting season is from February-August.	14. Latitude From: 29 42' 40"N	To:	
	15. Longitude From: 95 01' 23"W	To:	

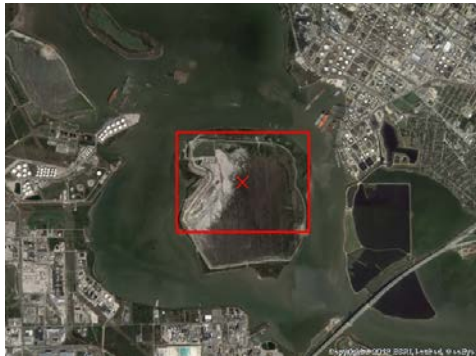
16. Closest Boat Ramp River Terrace Park	17. Distance From Ramp 5 NM	18. Boat Type Multiple Types
---	--------------------------------	---------------------------------

19. Directions From Local Sector Accessible by boat only. Just North of the Fred Hartman Bridge (Hwy 146)	20. Closest Airport La Porte Municipal Airport (T41)
	21. Closest Helo Spot La Porte Municipal Airport (T41)

22. Trustee/Contact Numbers	23. Resources at Risk	24. Width of inlet N/A in ft.
USCG: (281) 464-4800 RRC: (713) 869-5001	Atlas Priority High	25. Water depth in ft. 1'
USCG DUTY: (800) 424-4800 TPWD: (281) 842-8100	Environmental <b>High</b>	26. Current Medium
TGLO: (800) 832-8224 NRDA: (512) 463 -9309	Economic Low	27. No. of Personnel 6
TCEQ: (713) 767-3563 USFWS: (281) 286-8282		

25. Booming Strategy <b>Recommendation</b> Deploy protection and or diversion booming to minimize impact and divert product away from sensitive shoreline area around island.
--

AERIAL PHOTO



ON SITE PHOTO



29. Prepared By:	30. Reviewed by (PSC)	31. Reviewed by (OSC):
Assignment List	ICS 204 OS (Geographic Response Plan)	Project Updated:

"Response strategies may need to be modified to account for changes due to seasonality, weather conditions, spill characteristics, tides and any other considerations."

1. Incident Name	2. Operational Period (Date/Time)	Assignment List ICS 204-OS
------------------	-----------------------------------	----------------------------

3. Branch	4. Division/Group
-----------	-------------------

5. Operations Personnel	
Operations Section Chief	_____
Branch Director	_____
Division/Group Supervisor	_____

6. Resources Assigned This Period						"X" Indicates 204a attachment with special instructions
Resource Identifier	Leader	Contact Info #	# of Persons	Reporting Info/Notes/Remarks		

7. Assignments
----------------

**SAFETY NOTE:** Responders should exercise caution due to frequent vessel movement.

8. Site Number: 54-G	9. Quad Name La Porte	10. NOAA Chart # 11328	11. GLO Atlas Page # 54	12. County Harris
-------------------------	--------------------------	---------------------------	----------------------------	----------------------

13. Site Information: <b>Marsh East of DuPont Barge Dock</b> Shoreline East of DuPont barge dock. Located west of the Fred Hartman Bridge west of entrance to Lower San Jacinto Bay.			14. Latitude From: 29 41' 56"N	To:
			15. Longitude From: 095 01' 36"W	To:

16. Closest Boat Ramp Sylvan Beach Boat Ramp	17. Distance From Ramp 5 NM	18. Boat Type Multiple Types
---	--------------------------------	---------------------------------

19. Directions From Local Sector Take I-610 north to SH 225, go East to Strang Rd. South to site.		20. Closest Airport La Porte Municipal Airport (T41)
		21. Closest Helo Spot La Porte Municipal Airport (T41)

22. Trustee/Contact Numbers	23. Resources at Risk	24. Width of inlet 1000' in ft.
USCG: (281) 464-4800 RRC: (713) 869-5001	Atlas Priority Low	25. Water depth in ft. 1'
USCG DUTY: (800) 424-4800 TPWD: (281) 842-8100	Environmental <b>Low</b>	26. Current Slow
TGLO: (800) 832-8224 NRDA: (512) 463 -9309	Economic Low	27. No. of Personnel 2
TCEQ: (713) 767-3563 USFWS: (281) 286-8282		

25. Booming Strategy <b>Recommendation</b> Consult with DuPont for access. Boom to prevent oil from entering or exiting marsh east of DuPont Barge Dock.
---

AERIAL PHOTO



ON SITE PHOTO



29. Prepared By:	30. Reviewed by (PSC)	31. Reviewed by (OSC):
Assignment List	ICS 204 OS (Geographic Response Plan)	Project Updated:

"Response strategies may need to be modified to account for changes due to seasonality, weather conditions, spill characteristics, tides and any other considerations."

1. Incident Name	2. Operational Period (Date/Time)	Assignment List ICS 204-OS
------------------	-----------------------------------	----------------------------

3. Branch	4. Division/Group
-----------	-------------------

5. Operations Personnel	_____
Operations Section Chief	_____
Branch Director	_____
Division/Group Supervisor	_____

6. Resources Assigned This Period "X" Indicates 204a attachment with special instructions

Resource Identifier	Leader	Contact Info #	# of Persons	Reporting Info/Notes/Remarks

7. Assignments

**SAFETY NOTE:** Responders should exercise caution due to frequent vessel movement. Shallow water

8. Site Number: 54-H	9. Quad Name La Porte	10. NOAA Chart # 11328	11. GLO Atlas Page # 54	12. County Harris
-------------------------	--------------------------	---------------------------	----------------------------	----------------------

13. Site Information: <b>Lower San Jacinto Bay</b> Entrance to Lower San Jacinto Bay. Located west of the Fred Hartman Bridge.	14. Latitude From: 29 41' 57"N	To:	
	15. Longitude From: 095 01' 28"W	To:	

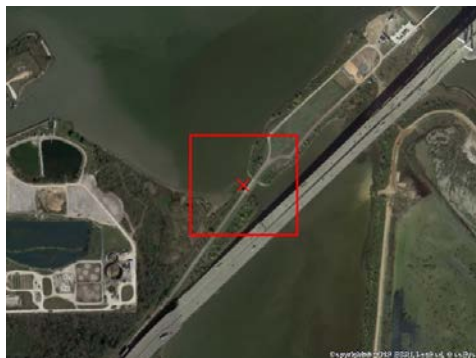
16. Closest Boat Ramp Sylvan Beach Boat Ramp	17. Distance From Ramp 5 NM	18. Boat Type Multiple Types
---	--------------------------------	---------------------------------

19. Directions From Local Sector Take I-610 north to SH 225, go East to Strang Rd. South to site.	20. Closest Airport La Porte Municipal Airport (T41)		21. Closest Helo Spot La Porte Municipal Airport (T41)
--	---	--	---

22. Trustee/Contact Numbers USCG: (281) 464-4800 RRC: (713) 869-5001 USCG DUTY: (800) 424-4800 TPWD: (281) 842-8100 TGLO: (800) 832-8224 NRDA: (512) 463 -9309 TCEQ: (713) 767-3563 USFWS: (281) 286-8282	23. Resources at Risk Atlas Priority Low Environmental <b>Low</b> Economic Low	24. Width of inlet 200' in ft. 25. Water depth in ft. 2' 26. Current Slow 27. No. of Personnel 2
---	---	--

25. Booming Strategy **Recommendation**  
Boom to prevent oil from entering Lower San Jacinto Bay

AERIAL PHOTO



ON SITE PHOTO



29. Prepared By: Assignment List	30. Reviewed by (PSC) ICS 204 OS (Geographic Response Plan)	31. Reviewed by (OSC): Project Updated:
-------------------------------------	--	--

"Response strategies may need to be modified to account for changes due to seasonality, weather conditions, spill characteristics, tides and any other considerations."

1. Incident Name	2. Operational Period (Date/Time)	Assignment List ICS 204-OS
------------------	-----------------------------------	----------------------------

3. Branch	4. Division/Group
-----------	-------------------

5. Operations Personnel	
Operations Section Chief	_____
Branch Director	_____
Division/Group Supervisor	_____

6. Resources Assigned This Period "X" Indicates 204a attachment with special instructions

Resource Identifier	Leader	Contact Info #	# of Persons	Reporting Info/Notes/Remarks

7. Assignments

**SAFETY NOTE:** Responders should exercise caution due to frequent vessel movement.

8. Site Number: 54-I	9. Quad Name La Porte	10. NOAA Chart # 11328	11. GLO Atlas Page # 54	12. County Harris
-------------------------	--------------------------	---------------------------	----------------------------	----------------------

13. Site Information: <b>Barbors Cut Turning Basin Marsh</b> Located on the north side of the turning basin.	14. Latitude From: 29 41' 12"N	To:	
	15. Longitude From: 095 00' 29"W	To:	

16. Closest Boat Ramp Sylvan Beach Boat Ramp	17. Distance From Ramp 3.5 NM	18. Boat Type Multiple Types
---	----------------------------------	---------------------------------

19. Directions From Local Sector Take I-610 south to Hwy 225 . Take Hwy 225 east until it ends at Hwy 146. Take Hwy 146 south Barbours Cut Rd. Go East.	20. Closest Airport La Porte Municipal Airport (T41)
	21. Closest Helo Spot La Porte Municipal Airport (T41)

22. Trustee/Contact Numbers	23. Resources at Risk	24. Width of inlet 2000' in ft.
USCG: (281) 464-4800 RRC: (713) 869-5001	Atlas Priority N/A	25. Water depth in ft. 3'
USCG DUTY: (800) 424-4800 TPWD: (281) 842-8100	Environmental N/A	26. Current Slow
TGLO: (800) 832-8224 NRDA: (512) 463 -9309		27. No. of Personnel 4
TCEQ: (713) 767-3563 USFWS: (281) 286-8282	Economic High	

25. Booming Strategy **Recommendation**  
Boom to prevent oil impact marsh inside Barbours Cut Terminal turning basin.

AERIAL PHOTO



ON SITE PHOTO



29. Prepared By:	30. Reviewed by (PSC)	31. Reviewed by (OSC):
Assignment List	ICS 204 OS (Geographic Response Plan)	Project Updated:

"Response strategies may need to be modified to account for changes due to seasonality, weather conditions, spill characteristics, tides and any other considerations."

1. Incident Name	2. Operational Period (Date/Time)	Assignment List ICS 204-OS
------------------	-----------------------------------	----------------------------

3. Branch	4. Division/Group
-----------	-------------------

5. Operations Personnel	
Operations Section Chief	_____
Branch Director	_____
Division/Group Supervisor	_____

6. Resources Assigned This Period "X" Indicates 204a attachment with special instructions

Resource Identifier	Leader	Contact Info #	# of Persons	Reporting Info/Notes/Remarks

7. Assignments
----------------

**SAFETY NOTE:** Shallow water. Water hazards include unmarked pilings throughout the area.

8. Site Number: 54-J	9. Quad Name La Porte	10. NOAA Chart # 11328	11. GLO Atlas Page # 54	12. County Harris
-------------------------	--------------------------	---------------------------	----------------------------	----------------------

13. Site Information: <b>Blackwell Street Creek</b> Located between S Blackwell Street and Sandy Lane in Morgans Point.	14. Latitude From: 29 39' 46" N	To:	
	15. Longitude From: 95 00' 04"W	To:	

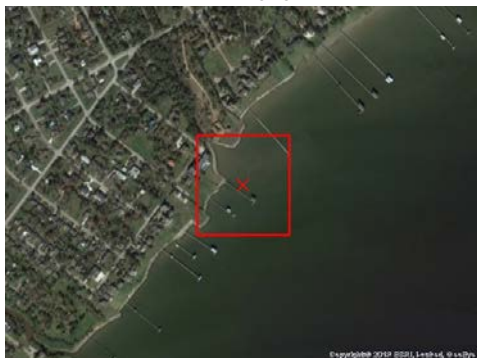
16. Closest Boat Ramp Sylvan Beach Boat Ramp	17. Distance From Ramp 1.3 NM	18. Boat Type Flat Bottom Boat
---	----------------------------------	-----------------------------------

19. Directions From Local Sector Take I-610 south to Hwy 225 . Take Hwy 225 east until it ends at Hwy 146. Take Hwy 146 south to Fairmont Parkway. Turn left on Fairmont Parkway. Turn left on Park Drive. Right on S. Blackwell St.	20. Closest Airport La Porte Municipal Airport (T41)
	21. Closest Helo Spot La Porte Municipal Airport (T41)

22. Trustee/Contact Numbers	23. Resources at Risk	24. Width of inlet 250' in ft.
USCG: (281) 464-4800 RRC: (713) 869-5001	Atlas Priority N/A	25. Water depth in ft. 2'
USCG DUTY: (800) 424-4800 TPWD: (281) 842-8100	Environmental N/A	26. Current Slow
TGLO: (800) 832-8224 NRDA: (512) 463 -9309		27. No. of Personnel 2
TCEQ: (713) 767-3563 USFWS: (281) 286-8282	Economic Low	

25. Booming Strategy <b>Recommendation</b> Boom to prevent oil from entering creek.
--

AERIAL PHOTO



ON SITE PHOTO



29. Prepared By:	30. Reviewed by (PSC)	31. Reviewed by (OSC):
Assignment List	ICS 204 OS (Geographic Response Plan)	Project Updated:

"Response strategies may need to be modified to account for changes due to seasonality, weather conditions, spill characteristics, tides and any other considerations."

1. Incident Name	2. Operational Period (Date/Time)	Assignment List ICS 204-OS
------------------	-----------------------------------	----------------------------

3. Branch	4. Division/Group
-----------	-------------------

5. Operations Personnel	
Operations Section Chief	_____
Branch Director	_____
Division/Group Supervisor	_____

6. Resources Assigned This Period "X" Indicates 204a attachment with special instructions

Resource Identifier	Leader	Contact Info #	# of Persons	Reporting Info/Notes/Remarks

7. Assignments
----------------

**SAFETY NOTE:** Shallow water. Water hazards include unmarked pilings throughout the area.

8. Site Number: 54-K	9. Quad Name La Porte	10. NOAA Chart # 11327	11. GLO Atlas Page # 54	12. County Harris
-------------------------	--------------------------	---------------------------	----------------------------	----------------------

13. Site Information: <b>Oak Grove Street Creek</b> Located between Oak Grove Street and S Brownell Street in Morgans Point.	14. Latitude From: 29 39' 34" N	To:	
	15. Longitude From: 95 00' 17"W	To:	

16. Closest Boat Ramp Sylvan Beach Boat Ramp	17. Distance From Ramp 0.9 NM	18. Boat Type Flat Bottom Boat
---	----------------------------------	-----------------------------------

19. Directions From Local Sector Take I-610 south to Hwy 225 . Take Hwy 225 east until it ends at Hwy 146. Take Hwy 146 south to Fairmont Parkway. Turn left on Fairmont Parkway. Turn left on Park Drive. Right on Oak Grove .	20. Closest Airport La Porte Municipal Airport (T41)
	21. Closest Helo Spot La Porte Municipal Airport (T41)

22. Trustee/Contact Numbers	23. Resources at Risk	24. Width of inlet 50' in ft.
USCG: (281) 464-4800 RRC: (713) 869-5001	Atlas Priority N/A	25. Water depth in ft. 1'
USCG DUTY: (800) 424-4800 TPWD: (281) 842-8100	Environmental N/A	26. Current Slow
TGLO: (800) 832-8224 NRDA: (512) 463 -9309		27. No. of Personnel 2
TCEQ: (713) 767-3563 USFWS: (281) 286-8282	Economic Low	

25. Booming Strategy <b>Recommendation</b> Boom to prevent oil from entering creek.
--



29. Prepared By:	30. Reviewed by (PSC)	31. Reviewed by (OSC):
Assignment List	ICS 204 OS (Geographic Response Plan)	Project Updated:

"Response strategies may need to be modified to account for changes due to seasonality, weather conditions, spill characteristics, tides and any other considerations."

1. Incident Name	2. Operational Period (Date/Time)	Assignment List ICS 204-OS
------------------	-----------------------------------	----------------------------

3. Branch	4. Division/Group
-----------	-------------------

5. Operations Personnel	
Operations Section Chief	_____
Branch Director	_____
Division/Group Supervisor	_____

6. Resources Assigned This Period "X" Indicates 204a attachment with special instructions

Resource Identifier	Leader	Contact Info #	# of Persons	Reporting Info/Notes/Remarks

7. Assignments

**SAFETY NOTE:** Shallow water. Water hazards include unmarked pilings throughout the area.

8. Site Number: 54-L	9. Quad Name La Porte	10. NOAA Chart # 11327	11. GLO Atlas Page # 54	12. County Harris
-------------------------	--------------------------	---------------------------	----------------------------	----------------------

13. Site Information: <b>Little Cedar Bayou</b> Located between Sylvan Beach and the Houston Yacht Club North of South R Street in Shoreacres.	14. Latitude From: 29 38' 35"N	To:	
	15. Longitude From: 95 00' 51"W	To:	

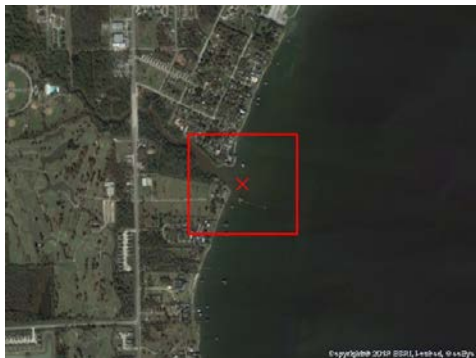
16. Closest Boat Ramp Sylvan Beach Boat Ramp	17. Distance From Ramp 0.5 NM	18. Boat Type Flat Bottom Boat
---	----------------------------------	-----------------------------------

19. Directions From Local Sector Take I-610 south to Hwy 225 . Take Hwy 225 east until it ends at Hwy 146. Take Hwy 146 south to Fairmont Parkway. Turn left on Fairmont Parkway. Right on S Broadway St. Left on South R Street.	20. Closest Airport La Porte Municipal Airport (T41)
	21. Closest Helo Spot La Porte Municipal Airport (T41)

22. Trustee/Contact Numbers	23. Resources at Risk	24. Width of inlet 350' in ft.
USCG: (281) 464-4800 RRC: (713) 869-5001	Atlas Priority N/A	25. Water depth in ft. 1'
USCG DUTY: (800) 424-4800 TPWD: (281) 842-8100	Environmental N/A	26. Current Slow
TGLO: (800) 832-8224 NRDA: (512) 463 -9309		27. No. of Personnel 2
TCEQ: (713) 767-3563 USFWS: (281) 286-8282	Economic Low	

25. Booming Strategy **Recommendation**  
Boom to prevent oil from entering Little Cedar Bayou.

AERIAL PHOTO



ON SITE PHOTO



29. Prepared By:	30. Reviewed by (PSC)	31. Reviewed by (OSC):
Assignment List	ICS 204 OS (Geographic Response Plan)	Project Updated:

"Response strategies may need to be modified to account for changes due to seasonality, weather conditions, spill characteristics, tides and any other considerations."



1. Incident Name	2. Operational Period (Date/Time)	Assignment List ICS 204-OS
------------------	-----------------------------------	----------------------------

3. Branch	4. Division/Group
-----------	-------------------

5. Operations Personnel	
Operations Section Chief	_____
Branch Director	_____
Division/Group Supervisor	_____

6. Resources Assigned This Period "X" Indicates 204a attachment with special instructions

Resource Identifier	Leader	Contact Info #	# of Persons	Reporting Info/Notes/Remarks

7. Assignments
----------------

**SAFETY NOTE:** Responders should exercise caution due to frequent vessel movement.

8. Site Number: 54-M	9. Quad Name La Porte	10. NOAA Chart # 11328	11. GLO Atlas Page # 54	12. County Harris
-------------------------	--------------------------	---------------------------	----------------------------	----------------------

13. Site Information: <b>Black Duck Bay</b> Located under the 146 Hwy at the entrance to Black Duck Bay.	14. Latitude From: 29-41-12 N	To:	
	15. Longitude From: 095-00-29W	To:	

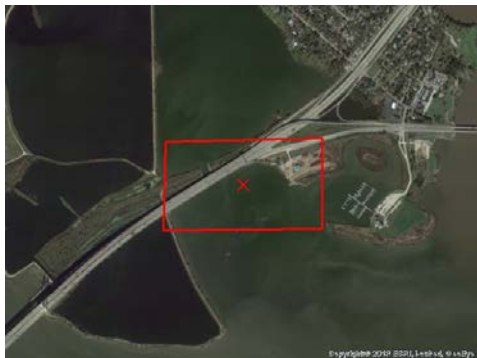
16. Closest Boat Ramp Bayland park boat ramp	17. Distance From Ramp 1/2 mile	18. Boat Type Multiple Types
---	------------------------------------	---------------------------------

19. Directions From Local Sector Take I-610 south to Hwy 225 . Take Hwy 225 east until it ends at Hwy 146. Take Hwy 146 south to Fairmont Parkway. Turn left on Fairmont Parkway til it ends. Turn right on Bayshore Drive to the third driveway on the left - boat ramp entrance.	20. Closest Airport La Porte Municipal Airport
	21. Closest Helo Spot La Porte Municipal Airport

22. Trustee/Contact Numbers	23. Resources at Risk	24. Width of inlet 200' in ft.
USCG: (281) 464-4800 RRC: (713) 869-5001	Atlas Priority Low	25. Water depth in ft. 2'
USCG DUTY: (800) 424-4800 TPWD: (281) 842-8100	Environmental <b>Low</b>	26. Current Slow
TGLO: (800) 832-8224 NRDA: (512) 463 -9309		27. No. of Personnel 2
TCEQ: (713) 767-3563 USFWS: (281) 286-8282	Economic Low	

25. Booming Strategy <b>Recommendation</b> Boom to prevent oil entering or exiting Black Duck Bay
--

AERIAL PHOTO



ON SITE PHOTO



29. Prepared By:	30. Reviewed by (PSC)	31. Reviewed by (OSC):
Assignment List	ICS 204 OS (Geographic Response Plan)	Project Updated:

"Response strategies may need to be modified to account for changes due to seasonality, weather conditions, spill characteristics, tides and any other considerations."

1. Incident Name	2. Operational Period (Date/Time)	Assignment List ICS 204-OS
------------------	-----------------------------------	----------------------------

3. Branch	4. Division/Group
-----------	-------------------

5. Operations Personnel	
Operations Section Chief	_____
Branch Director	_____
Division/Group Supervisor	_____

6. Resources Assigned This Period "X" Indicates 204a attachment with special instructions

Resource Identifier	Leader	Contact Info #	# of Persons	Reporting Info/Notes/Remarks

7. Assignments

**SAFETY NOTE:** All approaches to Crystal are through shallow water.

8. Site Number: 54-N	9. Quad Name Highlands	10. NOAA Chart # 11329	11. GLO Atlas Page # 54	12. County Harris
-------------------------	---------------------------	---------------------------	----------------------------	----------------------

13. Site Information: <b>Crystal Bay Marsh (SE)</b> This marsh is between Crystal Bay and Scott Bay in Baytown, Tx.	14. Latitude From: 29 45' 08"N	To:	
	15. Longitude From: 95 3' 06"W	To:	

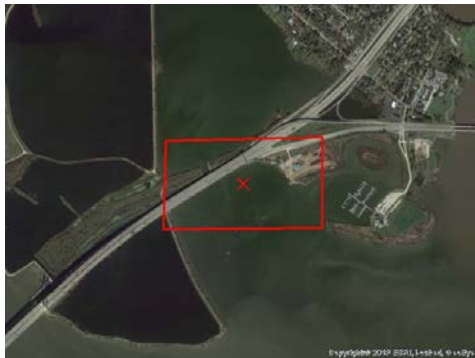
16. Closest Boat Ramp River Terrace Park	17. Distance From Ramp 4.5 NM	18. Boat Type Airboat
---	----------------------------------	--------------------------

19. Directions From Local Sector 610N to I-10E to Spur 330. East to Bayway Dr., exit right. Right onto W. Shreck St. Left onto Bayshore Dr. to marsh.	20. Closest Airport Baytown Airport (HPY)
	21. Closest Helo Spot Baytown Airport (HPY)

22. Trustee/Contact Numbers	23. Resources at Risk	24. Width of inlet 100' in ft.
USCG: (281) 464-4800 RRC: (713) 869-5001	Atlas Priority Low	25. Water depth in ft. <1'
USCG DUTY: (800) 424-4800 TPWD: (281) 842-8100	Environmental <b>Low</b>	26. Current Slow
TGLO: (800) 832-8224 NRDA: (512) 463 -9309		27. No. of Personnel 2
TCEQ: (713) 767-3563 USFWS: (281) 286-8282	Economic N/A	

25. Booming Strategy **Recommendation**  
Boom canals to prevent oil from entering marsh areas.

AERIAL PHOTO



ON SITE PHOTO



29. Prepared By:	30. Reviewed by (PSC)	31. Reviewed by (OSC):
Assignment List	ICS 204 OS (Geographic Response Plan)	Project Updated:

"Response strategies may need to be modified to account for changes due to seasonality, weather conditions, spill characteristics, tides and any other considerations."