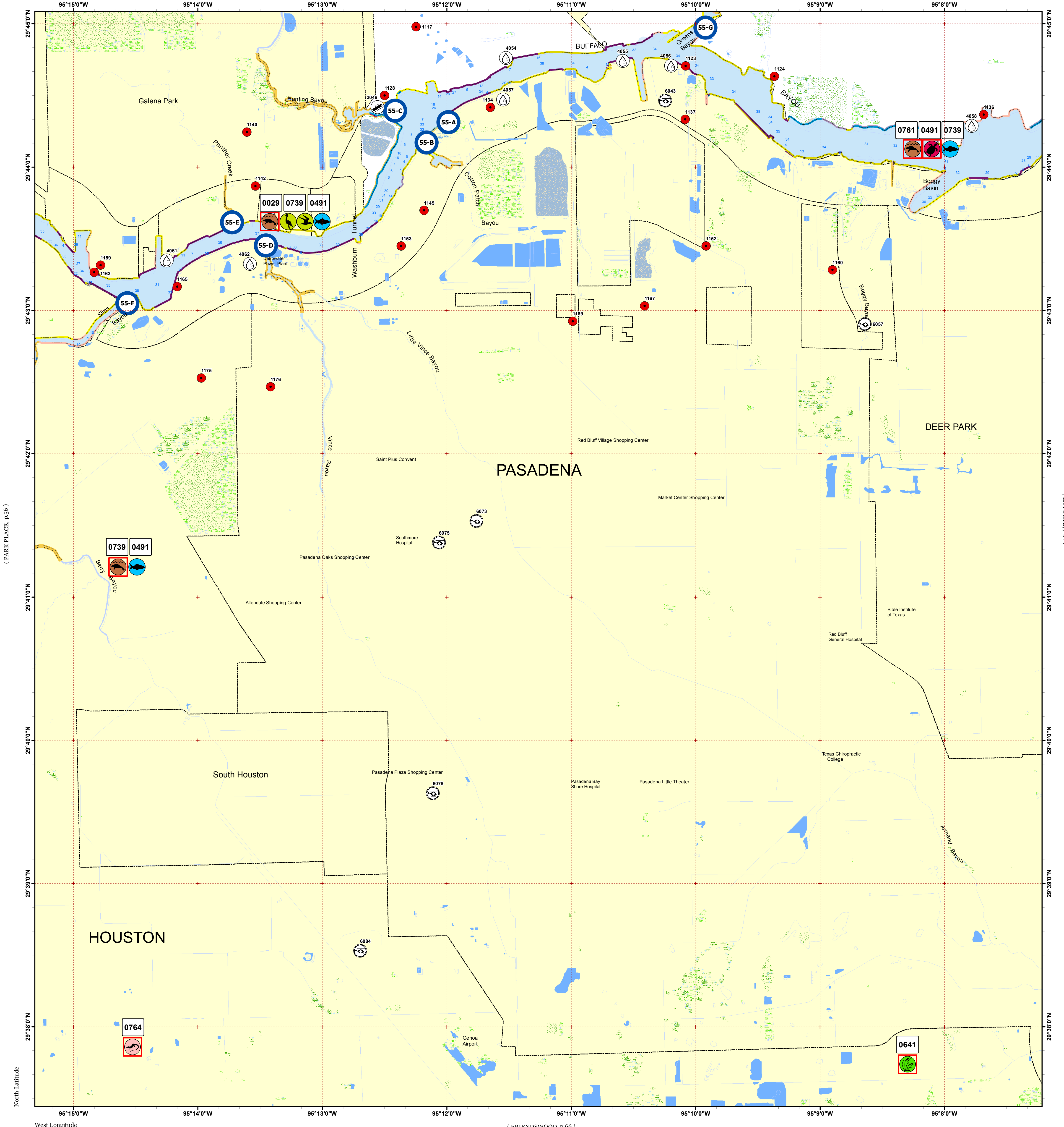


PASADENA

(JACINTO CITY, p.41)

Click Here or Scroll Down for Associated Map Data

Click on the Geographic Response Plan Target to View the ICS Form



(PARK PLACE, p.56)

(LA PORTE, p.54)

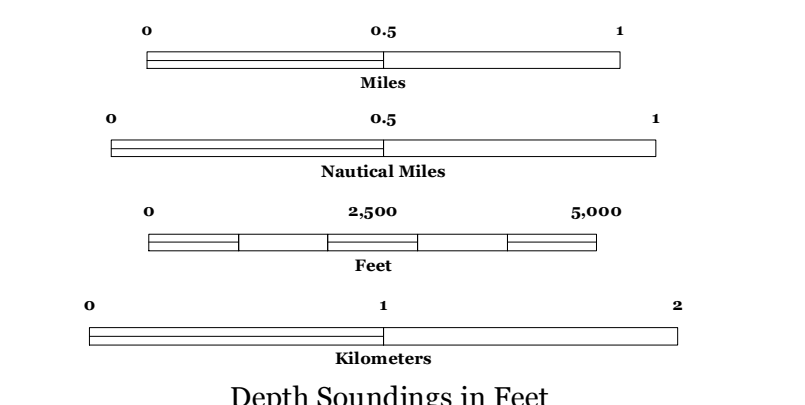
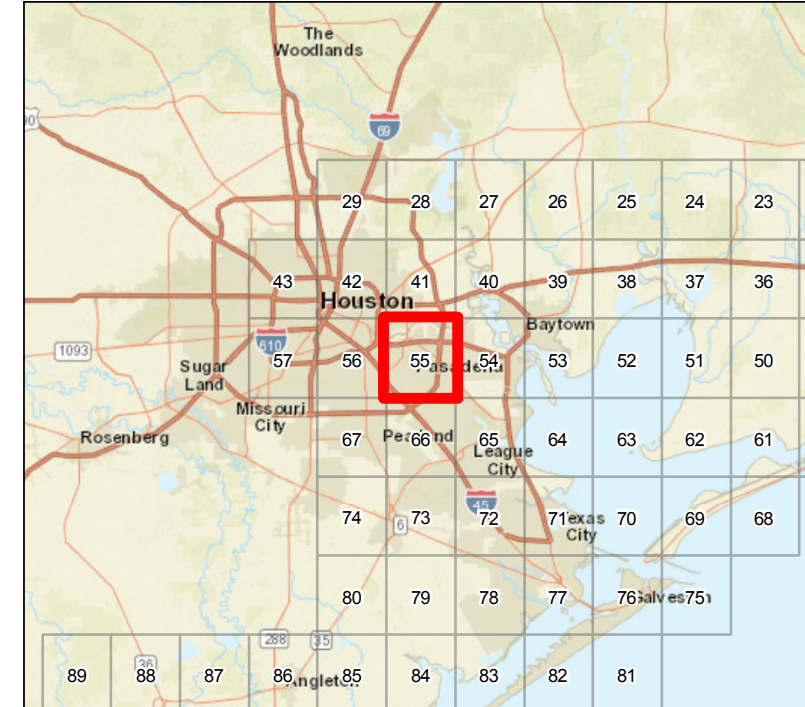
West Longitude: 95°15'0"W, 95°14'0"W, 95°13'0"W, 95°12'0"W, 95°11'0"W, 95°10'0"W, 95°9'0"W, 95°8'0"W

North Latitude: 29°45'0"N, 29°44'0"N, 29°43'0"N, 29°42'0"N, 29°41'0"N, 29°40'0"N, 29°39'0"N, 29°38'0"N



Oil Spill Planning and Response Atlas 2016

The Texas General Land Office makes no representations or warranties regarding the accuracy or completeness of the information depicted on this map or the data from which it was produced. This map is not suitable for navigational purposes and does not purport to depict boundaries of private and public land.



Human Use Features

- Boat Ramp
- Facility
- Heliport
- Water Intake
- Geographic Response Plan

Map Base Layers

- Bays
- Salt and Brackish Marshes
- Beach or Tidal Flat
- Exposed Lake Shore
- Freshwater Marshes
- Swamps and Flooded Woodlands
- Willow Thickets
- Lake / Pond
- Perennial River
- County Boundary
- City Limits

Priority Protection Areas

Species Icons Within Map Quad

- Amphibian T/E
- Turtle T/E
- Fish
- Mammal T/E
- Plant T/E
- Gull/Tern
- Wading

ENVIRONMENTAL SENSITIVITY INDEX

- 10D Mangroves and Woody Vegetation
- 10C Freshwater Swamps
- 10B Freshwater Marshes
- 10A Salt and Brackish Water Marshes
- 9 Sheltered Tidal Flats
- 8C Sheltered Rocky/Karst Shores
- 8D Sheltered Scarps
- 8B Sheltered Riprap Structures
- 8A Sheltered Solid Manmade Structures
- 7 Exposed Tidal Flats
- 6B Exposed Riprap Structures
- 6A Gravel or Shell Beaches
- 5 Mixed Sand and Gravel or Shell Beaches
- 4 Coarse-Grained Sand Beaches
- 3B Scarps and Steep Slopes in Sand
- 3A Fine-Grained Sand Beaches
- 2B Wave-Cut Clay Platforms
- 2A Scarps and Steep Slopes in Clay
- 1 Exposed Walls and Other Solid Structures

Quadrant: PASADENA

Map # :55

Biological Information for this quadrant represents known concentration areas of occurrence.

Biological Resources

Bird

RARNUM	NAME	S F	T E	CONC	J	F	M	A	M	J	J	A	S	O	N	D	Nesting	Migrating	Molting
0029	Gulls			-	X	X	X	X	X	X	X	X	X	X	X	X	-	-	-
	Terns			-	X	X	X	X	X	X	X	X	X	X	X	X	-	-	-
	Wading birds			-	X	X	X	X	X	X	X	X	X	X	X	X	-	-	-

Fish

RARNUM	NAME	S F	T E	CONC	J	F	M	A	M	J	J	A	S	O	N	D	Spawning	Eggs	Larvae	Juveniles	Adults
0491	Rainwater killifish			-	X	X	X	X	X	X	X	X	X	X	X	X	FEB-JUN	-	-	-	-
	Sailfin molly			-	X	X	X	X	X	X	X	X	X	X	X	X	-	-	-	-	-
	Tarpon			RARE			X	X	X	X	X	X	X	X	X	X	-	-	-	MAR-NOV	-
	Blue catfish			-	X	X	X	X	X	X	X	X	X	X	X	X	APR-MAY	-	-	-	JAN-DEC
	Smallmouth buffalo			-	X	X	X	X	X	X	X	X	X	X	X	X	-	-	-	-	JAN-DEC

Marine Mammal

RARNUM	NAME	S F	T E	CONC	J	F	M	A	M	J	J	A	S	O	N	D	Mating	Calving	Pupping	Molting
0739	West Indian manatee	S/F	E/E	VERY-RARE						X	X	X					-	-	-	-

Reptile

RARNUM	NAME	S F	T E	CONC	J	F	M	A	M	J	J	A	S	O	N	D	Nesting	Hatching	Interesting	Juveniles	Adults
0761	Kemp's ridley sea turtle	S/F	E/E	COMMON				X	X	X	X	X	X	X	X		-	-	-	APR-NOV	-
0764	Houston toad	S/F	E/E	-	X	X	X	X	X	X	X	X	X	X	X	X	FEB-JUN	FEB-JUN	-	JAN-DEC	JAN-DEC

Human Use Resources

Boat Ramp	RARNUM	NAME	CONTACT	CONTACT INFO
	2046	Magellan		
Facility	RARNUM	NAME	CONTACT	CONTACT INFO
	1117	Magellan Galena Park Terminal	Robert Silva	713-330-2775
	1123	Enterprise Products Operating LLC, Pasadena Facility	Lewis Brown	281-385-4200
	1124	Ballard Exploration Company, Inc.; Houston Ship Channel Facility	Ben Yoesel	936-334-6097
	1128	Galena Park Marine Terminal	David Clark	713-450-7243
	1134	Rentech Nitrogen Pasadena, LLC	Robert Brown	713-920-5300
	1136	Stolthaven Houston Inc.	Randy Jones	281-860-6856
	1137	Ethyl Corporation- Houston Plant	Antonio Salinas	713-740-1155
	1140	Enterprise Crude Galena Park	Terry Hutson	800-331-3381
	1142	Galena Park Terminal	Marlin Collins	713-450-7443
	1145	Pasadena Terminal	Ian Jorgensen	713-920-8450
	1152	Intercontinental Terminals Company - Pasadena	Carl Holley	832-780-6699
	1153	Pasadena Refining System, Inc. (PRSI)	Mark Berlinger	713-472-2461
	1159	Kinder Morgan Texas Terminals East (Ferro)	Robert Bradbury	281-900-2597
	1160	Mosaic Crop Nutrition, LLC	Brady Breaux	832-763-0705
	1163	Watco Transloading LLC Terminals	Greg Jackson	713-373-6267
	1165	Houston Refining LP	Plant Shift Superintendent	713-321-4211
	1167	Marathon Pipeline - Pasadena Station	John Hunt	800-537-6644
	1169	Shell Pipeline Co. L.P. - LaPorte Response Zone	Peyton Ross	800-852-3602
	1175	Explorer Pipeline	Rick Wright	888-497-3661
	1176	Magellan Pipeline	Erin Brantley	800-720-2417
Heliport	RARNUM	NAME	CONTACT	CONTACT INFO
	6043	ETHYL CORP	2TX9	PASADENA, TX 77503
	6057	SHELL DEER PARK REFINERY	TE28	HOUSTON, TX 77032
	6073	POLICE	XS37	
	6075	MEMORIAL HOSPITAL	TS88	PASADENA, TX 77502
	6078	3321 WESTSIDE	XS38	
	6084	HL&P SOUTH HOUSTON HELISTOP	5TX3	HOUSTON, TX 77251
Water Intake	RARNUM	NAME	CONTACT	CONTACT INFO
	4054	ARMCO INC.		
	4055	PHILLIPS 66 COMPANY		
	4056	ETHYL CORPORATION		
	4057	MOBIL OIL CORP		
	4058	OILTANKING OF TEXAS INC.		
	4061	PAKTANK CORP-GALENA PARK TERM		
	4062	HOUSTON L&P CO-DEEPWTR		

1. Incident Name	2. Operational Period (Date/Time)	Assignment List ICS 204-OS
------------------	-----------------------------------	----------------------------

3. Branch	4. Division/Group
-----------	-------------------

5. Operations Personnel	_____
Operations Section Chief	_____
Branch Director	_____
Division/Group Supervisor	_____

6. Resources Assigned This Period						"X" Indicates 204a attachment with special instructions
Resource Identifier	Leader	Contact Info #	# of Persons	Reporting Info/Notes/Remarks		

7. Assignments

SAFETY NOTE: In security zone.

8. Site Number: 55-A	9. Quad Name Paadena	10. NOAA Chart # 11325	11. GLO Atlas Page # 55	12. County Harris
-------------------------	-------------------------	---------------------------	----------------------------	----------------------

13. Site Information: Cotton Patch Bayou Marsh Marsh restoration inside Cotton Patch Bayou. The marsh is seperated from the bayou by a private bridge with two drain tubes. These drains could be boomed to isolate the marsh. East of Kinder Morgan Pasadena.	14. Latitude From: 29 44' 02"N	To:	
	15. Longitude From: 95 11' 58"W	To:	

16. Closest Boat Ramp River Terrace Park	17. Distance From Ramp 8 NM	18. Boat Type Multiple Types
---	--------------------------------	---------------------------------

19. Directions From Local Sector Take I-610 north to SH 225, go East. Exit Pasadena Blvd. Proceed North. Turn left on Red Bluff. Right on N. Witter. Proceed to bayou.	20. Closest Airport Houston Hobby (HOU)		
	21. Closest Helo Spot Houston Hobby (HOU)		

22. Trustee/Contact Numbers USCG: (281) 464-4800 RRC: (713) 869-5001 USCG DUTY: (800) 424-4800 TPWD: (281) 842-8100 TGLO: (800) 832-8224 NRDA: (512) 463 -9309 TCEQ: (713) 767-3563 USFWS: (281) 286-8282	23. Resources at Risk Atlas Priority N/A Environmental N/A Economic N/A	24. Width of inlet 20' in ft. 25. Water depth in ft. 0' 26. Current Slow 27. No. of Personnel 2
---	---	---

25. Booming Strategy Recommendation Boom across drain pipes to prevent migration into the marsh.
--



29. Prepared By: Assignment List	30. Reviewed by (PSC) ICS 204 OS (Geographic Response Plan)	31. Reviewed by (OSC): Project Updated:
-------------------------------------	--	--

"Response strategies may need to be modified to account for changes due to seasonality, weather conditions, spill characteristics, tides and any other considerations."

1. Incident Name	2. Operational Period (Date/Time)	Assignment List ICS 204-OS
------------------	-----------------------------------	----------------------------

3. Branch	4. Division/Group
-----------	-------------------

5. Operations Personnel	_____
Operations Section Chief	_____
Branch Director	_____
Division/Group Supervisor	_____

6. Resources Assigned This Period					"X" Indicates 204a attachment with special instructions
Resource Identifier	Leader	Contact Info #	# of Persons	Reporting Info/Notes/Remarks	

7. Assignments

SAFETY NOTE: Crews operating along the shoreline of the ship channel should expect wake action as vessels pass. In security zone.

8. Site Number: 55-B	9. Quad Name Pasadena	10. NOAA Chart # 11325	11. GLO Atlas Page # 55	12. County Harris
-------------------------	--------------------------	---------------------------	----------------------------	----------------------

13. Site Information: Cotton Patch Bayou Entrance to Cotton Patch Bayou. Cotton Patch Bayou is a small bayou east of Kinder Morgan Pasadena Barge Dock 3. Across channel from Red marker 160.	14. Latitude From: 29 44' 09"N	To:	
	15. Longitude From: 95 12' 12"W	To:	

16. Closest Boat Ramp River Terrace Park	17. Distance From Ramp 8 NM	18. Boat Type Multiple Types
---	--------------------------------	---------------------------------

19. Directions From Local Sector Take I-610 north to SH 225, go East. Exit Pasadena Blvd. Proceed North. Turn left on Red Bluff. Right on N Witter. Proceed North to bayou.	20. Closest Airport Houston Hobby (HOU)		
	21. Closest Helo Spot Houston Hobby (HOU)		

22. Trustee/Contact Numbers USCG: (281) 464-4800 RRC: (713) 869-5001 USCG DUTY: (800) 424-4800 TPWD: (281) 842-8100 TGLO: (800) 832-8224 NRDA: (512) 463 -9309 TCEQ: (713) 767-3563 USFWS: (281) 286-8282	23. Resources at Risk Atlas Priority N/A Environmental N/A Economic High	24. Width of inlet 330' in ft. 25. Water depth in ft. 17' 26. Current Slow 27. No. of Personnel 2
---	---	---

25. Booming Strategy Recommendation Boom entrance to prevent migration of oil into or out of Cotton Patch Bayou

AERIAL PHOTO



ON SITE PHOTO



29. Prepared By:	30. Reviewed by (PSC)	31. Reviewed by (OSC):
Assignment List	ICS 204 OS (Geographic Response Plan)	Project Updated:

"Response strategies may need to be modified to account for changes due to seasonality, weather conditions, spill characteristics, tides and any other considerations."

1. Incident Name	2. Operational Period (Date/Time)	Assignment List ICS 204-OS
------------------	-----------------------------------	----------------------------

3. Branch	4. Division/Group
-----------	-------------------

5. Operations Personnel	
Operations Section Chief	_____
Branch Director	_____
Division/Group Supervisor	_____

6. Resources Assigned This Period						"X" Indicates 204a attachment with special instructions
Resource Identifier	Leader	Contact Info #	# of Persons	Reporting Info/Notes/Remarks		

7. Assignments

SAFETY NOTE: Crews operating along the shoreline of the ship channel should expect wake action as vessels pass. In security zone.

8. Site Number: 55-C	9. Quad Name Pasadena	10. NOAA Chart # 11325	11. GLO Atlas Page # 55	12. County Harris
-------------------------	--------------------------	---------------------------	----------------------------	----------------------

13. Site Information: Hunting Bayou Entrance to Hunting Bayou. Hunting Bayou extends from the Houston Ship Channel toward Jacinto City. Boom could be anchored to mostly grassy banks. Red channel marker 160.	14. Latitude From: 29 44' 18"N	To:
	15. Longitude From: 95 12' 19"W	To:

16. Closest Boat Ramp River Terrace Park	17. Distance From Ramp 8 NM	18. Boat Type Multiple Types
---	--------------------------------	---------------------------------

19. Directions From Local Sector Take I-610 north to IH-10 east. Exit Federal Rd. Proceed South to bayou.	20. Closest Airport Houston Hobby
	21. Closest Helo Spot Houston Hobby

22. Trustee/Contact Numbers	23. Resources at Risk	24. Width of inlet 450' in ft.
USCG: (281) 464-4800 RRC: (713) 869-5001	Atlas Priority N/A	25. Water depth in ft. 6'
USCG DUTY: (800) 424-4800 TPWD: (281) 842-8100	Environmental N/A	26. Current Slow
TGLO: (800) 832-8224 NRDA: (512) 463 -9309	Economic High	27. No. of Personnel 2
TCEQ: (713) 767-3563 USFWS: (281) 286-8282		

25. Booming Strategy Recommendation Boom across mouth to prevent migration inland.
--

AERIAL PHOTO



ON SITE PHOTO



29. Prepared By:	30. Reviewed by (PSC)	31. Reviewed by (OSC):
Assignment List	ICS 204 OS (Geographic Response Plan)	Project Updated:

"Response strategies may need to be modified to account for changes due to seasonality, weather conditions, spill characteristics, tides and any other considerations."

1. Incident Name	2. Operational Period (Date/Time)	Assignment List ICS 204-OS
------------------	-----------------------------------	----------------------------

3. Branch	4. Division/Group
-----------	-------------------

5. Operations Personnel	
Operations Section Chief	_____
Branch Director	_____
Division/Group Supervisor	_____

6. Resources Assigned This Period "X" Indicates 204a attachment with special instructions

Resource Identifier	Leader	Contact Info #	# of Persons	Reporting Info/Notes/Remarks

7. Assignments

SAFETY NOTE: Crews operating along the shoreline of the ship channel should expect wake action as vessels pass. In security zone.

8. Site Number: 55-D	9. Quad Name Pasadena	10. NOAA Chart # 11325	11. GLO Atlas Page # 55	12. County Harris
-------------------------	--------------------------	---------------------------	----------------------------	----------------------

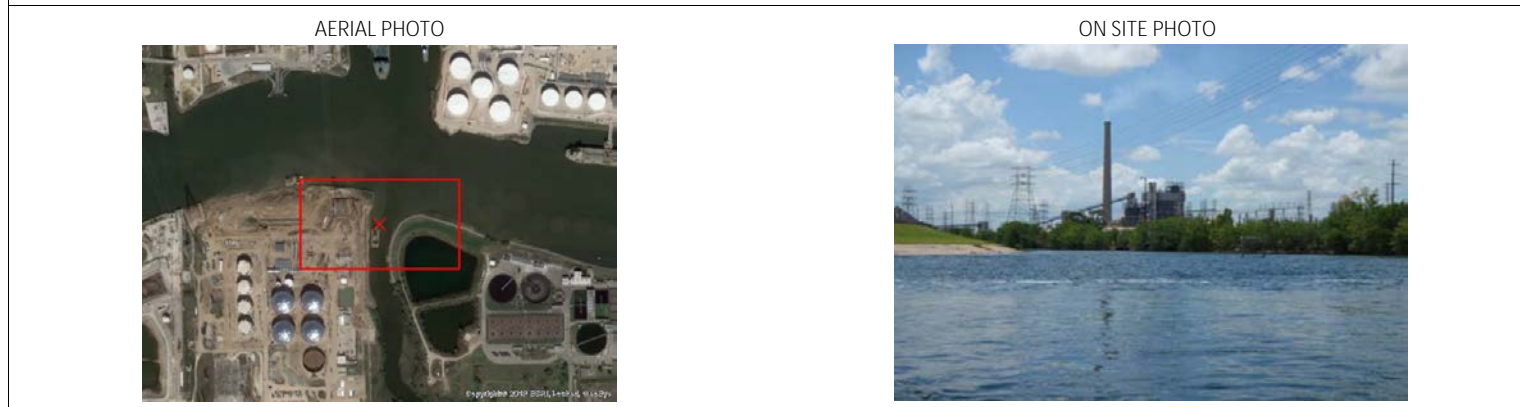
13. Site Information: Vince Bayou Entrance to Vince Bayou. Vince Bayou is a narrow, shallow and seldom used bayou extending from the Houston Ship Channel southward into Houston. Protective boom would need to be anchored into mud/grass banks.	14. Latitude From: 29 43' 28"N	To:	
	15. Longitude From: 95 13' 26"W	To:	

16. Closest Boat Ramp River Terrace Park	17. Distance From Ramp 8.5 miles	18. Boat Type Multiple Types
---	-------------------------------------	---------------------------------

19. Directions From Local Sector Take I-610 north to SH 225, go East. Exit N. Richey St. Proceed North to bayou.	20. Closest Airport Houston Hobby HOU
	21. Closest Helo Spot Houston Hobby (HOU)

22. Trustee/Contact Numbers	23. Resources at Risk	24. Width of inlet 200' in ft.
USCG: (281) 464-4800 RRC: (713) 869-5001	Atlas Priority N/A	25. Water depth in ft. 12'
USCG DUTY: (800) 424-4800 TPWD: (281) 842-8100	Environmental N/A	26. Current Slow
TGLO: (800) 832-8224 NRDA: (512) 463 -9309	Economic High	27. No. of Personnel 2
TCEQ: (713) 767-3563 USFWS: (281) 286-8282		

25. Booming Strategy **Recommendation**
Deploy boom to prevent entrance or exit of oil into or out of Vince Bayou



29. Prepared By:	30. Reviewed by (PSC)	31. Reviewed by (OSC):
Assignment List	ICS 204 OS (Geographic Response Plan)	Project Updated:

"Response strategies may need to be modified to account for changes due to seasonality, weather conditions, spill characteristics, tides and any other considerations."

1. Incident Name	2. Operational Period (Date/Time)	Assignment List ICS 204-OS
------------------	-----------------------------------	----------------------------

3. Branch	4. Division/Group
-----------	-------------------

5. Operations Personnel	_____
Operations Section Chief	_____
Branch Director	_____
Division/Group Supervisor	_____

6. Resources Assigned This Period						"X" Indicates 204a attachment with special instructions
Resource Identifier	Leader	Contact Info #	# of Persons	Reporting Info/Notes/Remarks		

7. Assignments

SAFETY NOTE: Crews operating along the shoreline of the ship channel should expect wake action as vessels pass. In security zone.

8. Site Number: 55-E	9. Quad Name Pasadena	10. NOAA Chart # 11325	11. GLO Atlas Page # 55	12. County Harris
-------------------------	--------------------------	---------------------------	----------------------------	----------------------

13. Site Information: Panther Creek Entrance to Panther Creek. Panther Creek starts at the Houston Ship Channel and proceeds into downtown Galena Park. Located on west side of Kinder Morgan Galena Park facility	14. Latitude From: 29 43' 35"N	To:	
	15. Longitude From: 95 13' 43"W	To:	

16. Closest Boat Ramp River Terrace Park	17. Distance From Ramp 8.5 miles	18. Boat Type Multiple Types
---	-------------------------------------	---------------------------------

19. Directions From Local Sector Take I-610 north to Clinton Drive. Proceed East to Kinder Morgan Galena Park facility.	20. Closest Airport Houston Hobby (HOU)
	21. Closest Helo Spot Houston Hobby (HOU)

22. Trustee/Contact Numbers USCG: (281) 464-4800 RRC: (713) 869-5001 USCG DUTY: (800) 424-4800 TPWD: (281) 842-8100 TGLO: (800) 832-8224 NRDA: (512) 463 -9309 TCEQ: (713) 767-3563 USFWS: (281) 286-8282	23. Resources at Risk Atlas Priority N/A Environmental N/A Economic High	24. Width of inlet 50' in ft. 25. Water depth in ft. 3' 26. Current Slow 27. No. of Personnel 2
---	---	--

25. Booming Strategy Recommendation Boom across entrance to prevent migration of oil into or out of Panther Creek

AERIAL PHOTO



ON SITE PHOTO



29. Prepared By: Assignment List	30. Reviewed by (PSC) ICS 204 OS (Geographic Response Plan)	31. Reviewed by (OSC): Project Updated:
-------------------------------------	--	--

"Response strategies may need to be modified to account for changes due to seasonality, weather conditions, spill characteristics, tides and any other considerations."

1. Incident Name	2. Operational Period (Date/Time)	Assignment List ICS 204-OS
------------------	-----------------------------------	----------------------------

3. Branch	4. Division/Group
-----------	-------------------

5. Operations Personnel	
Operations Section Chief	_____
Branch Director	_____
Division/Group Supervisor	_____

6. Resources Assigned This Period						"X" Indicates 204a attachment with special instructions
Resource Identifier	Leader	Contact Info #	# of Persons	Reporting Info/Notes/Remarks		

7. Assignments

SAFETY NOTE: Crews operating along the shoreline of the ship channel should expect wake action as vessels pass. Debris is a common occurrence. Watch out for transients known to frequent the area. In security zone.

8. Site Number: 55-F	9. Quad Name Pasadena	10. NOAA Chart # 11325	11. GLO Atlas Page # 55	12. County Harris
-------------------------	--------------------------	---------------------------	----------------------------	----------------------

13. Site Information: Simms Bayou Entrance to Sims Bayou. It can be reached in 5-10 minutes by boat from MSO Houston-Galveston. The bayou extends several miles into Houston with mostly 30 degree grass banks. At the entrance there are piers on either side that boom could be attached to. M	14. Latitude From: 29-43-04N	To:	
	15. Longitude From: 95-14-36W	To:	

16. Closest Boat Ramp River Terrace Park	17. Distance From Ramp 9 miles	18. Boat Type Multiple Types
---	-----------------------------------	---------------------------------

19. Directions From Local Sector Take I-610 north to SH 225, go East. Exit Lawndale. Access through Port of Houston New Manchester docks.	20. Closest Airport Houston Hobby (HOU)
	21. Closest Helo Spot Houston Hobby (HOU)

22. Trustee/Contact Numbers	23. Resources at Risk	24. Width of inlet 475' in ft.
USCG: (281) 464-4800 RRC: (713) 869-5001	Atlas Priority N/A	25. Water depth in ft. 36'
USCG DUTY: (800) 424-4800 TPWD: (281) 842-8100	Environmental N/A	26. Current Slow
TGLO: (800) 832-8224 NRDA: (512) 463 -9309	Economic High	27. No. of Personnel 2
TCEQ: (713) 767-3563 USFWS: (281) 286-8282		

25. Booming Strategy Recommendation Boom entrance to prevent oil from migrating into or out of Simms Bayou
--



29. Prepared By:	30. Reviewed by (PSC)	31. Reviewed by (OSC):
Assignment List	ICS 204 OS (Geographic Response Plan)	Project Updated:

"Response strategies may need to be modified to account for changes due to seasonality, weather conditions, spill characteristics, tides and any other considerations."

1. Incident Name	2. Operational Period (Date/Time)	Assignment List ICS 204-OS
------------------	-----------------------------------	----------------------------

3. Branch	4. Division/Group
-----------	-------------------

5. Operations Personnel	_____
Operations Section Chief	_____
Branch Director	_____
Division/Group Supervisor	_____

6. Resources Assigned This Period						"X" Indicates 204a attachment with special instructions
Resource Identifier	Leader	Contact Info #	# of Persons	Reporting Info/Notes/Remarks		

7. Assignments

SAFETY NOTE: Crews operating along the shoreline of the ship channel should expect wake action as vessels pass. In security zone.

8. Site Number: 55-G	9. Quad Name Pasadena	10. NOAA Chart # 11325	11. GLO Atlas Page # 55	12. County Harris
-------------------------	--------------------------	---------------------------	----------------------------	----------------------

13. Site Information: Greens Bayou Entrance Entrance to Green's Bayou. Green's Bayou extends from the Houston Ship Channel northward into Jacinto City. The entrance is heavily commercialized. Debris is a common occurrence at the mouth. Red Channel Marker 152.	14. Latitude From: 29 44' 51"N	To:	
	15. Longitude From: 95 10' 05"W	To:	

16. Closest Boat Ramp River Terrace Park	17. Distance From Ramp 7 NM	18. Boat Type Multiple Types
---	--------------------------------	---------------------------------

19. Directions From Local Sector Take I-610 north to IH-10 east. Exit Federal Rd. Turn left on Industrial Rd. Proceed to bayou.	20. Closest Airport Houston Hobby (HOU)		
	21. Closest Helo Spot Houston Hobby (HOU)		

22. Trustee/Contact Numbers USCG: (281) 464-4800 RRC: (713) 869-5001 USCG DUTY: (800) 424-4800 TPWD: (281) 842-8100 TGLO: (800) 832-8224 NRDA: (512) 463 -9309 TCEQ: (713) 767-3563 USFWS: (281) 286-8282	23. Resources at Risk Atlas Priority N/A Environmental N/A Economic High	24. Width of inlet 600' in ft. 25. Water depth in ft. 32' 26. Current Medium 27. No. of Personnel 4
---	---	--

25. Booming Strategy Recommendation Boom close to spill site to prevent migration.
--



29. Prepared By: Assignment List	30. Reviewed by (PSC) ICS 204 OS (Geographic Response Plan)	31. Reviewed by (OSC): Project Updated:
-------------------------------------	--	--

"Response strategies may need to be modified to account for changes due to seasonality, weather conditions, spill characteristics, tides and any other considerations."