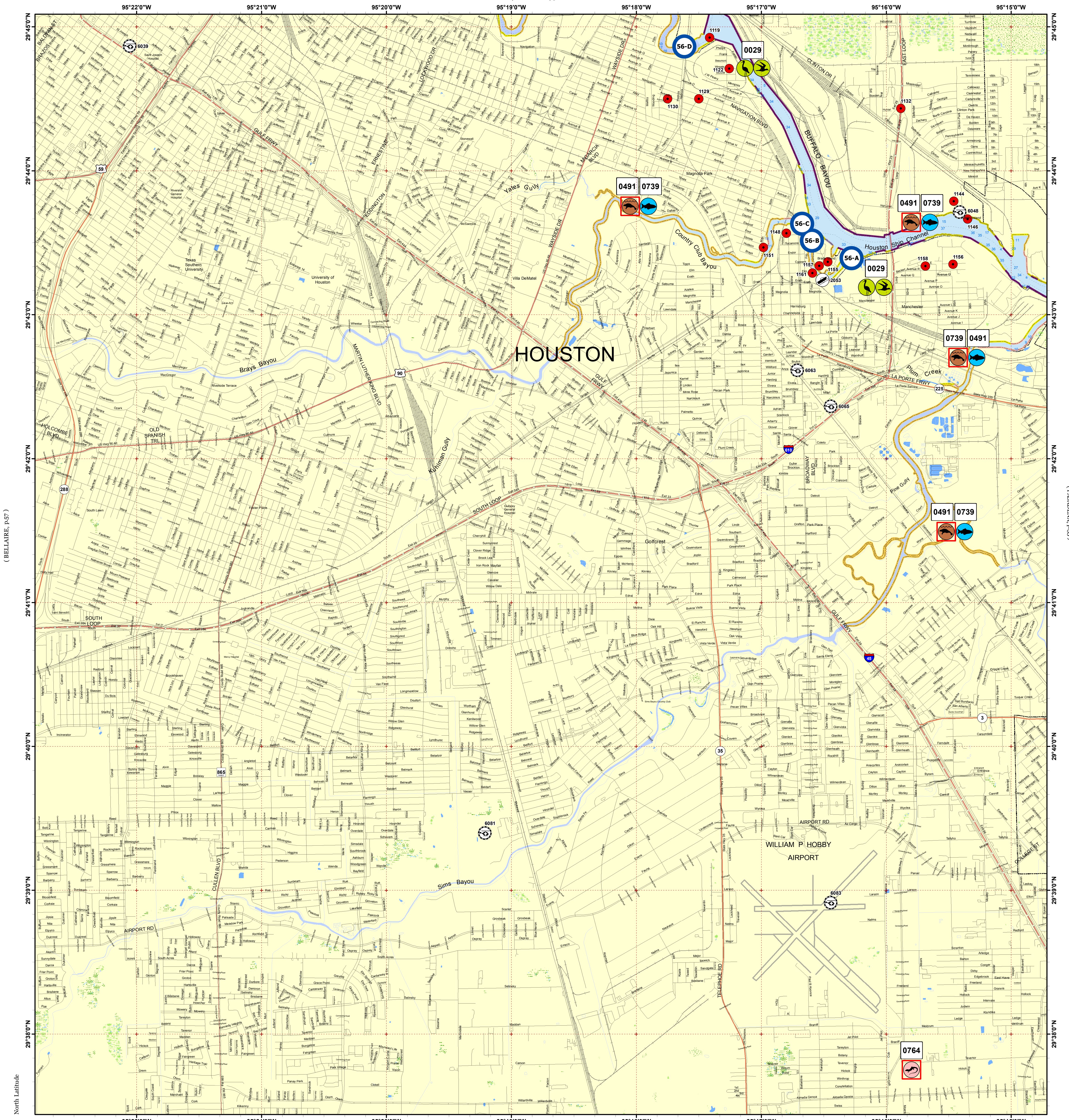


PARK PLACE

(SETTEGAST, p.42)

Click Here or Scroll Down for Associated Map Data

Click on the Geographic Response Plan Target to View the ICS Form



(BELLAIRE, p.57)

(PASADENA, p.55)

West Longitude

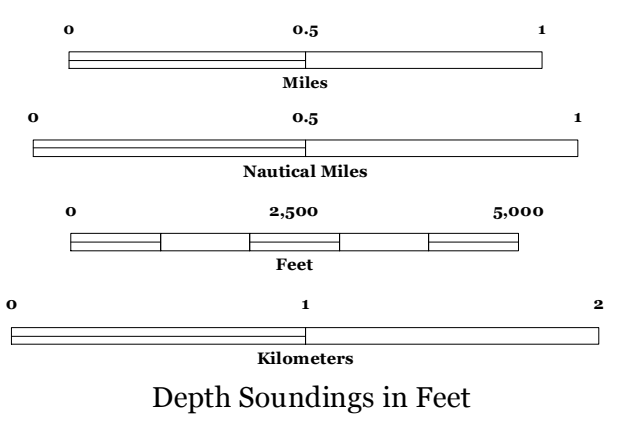
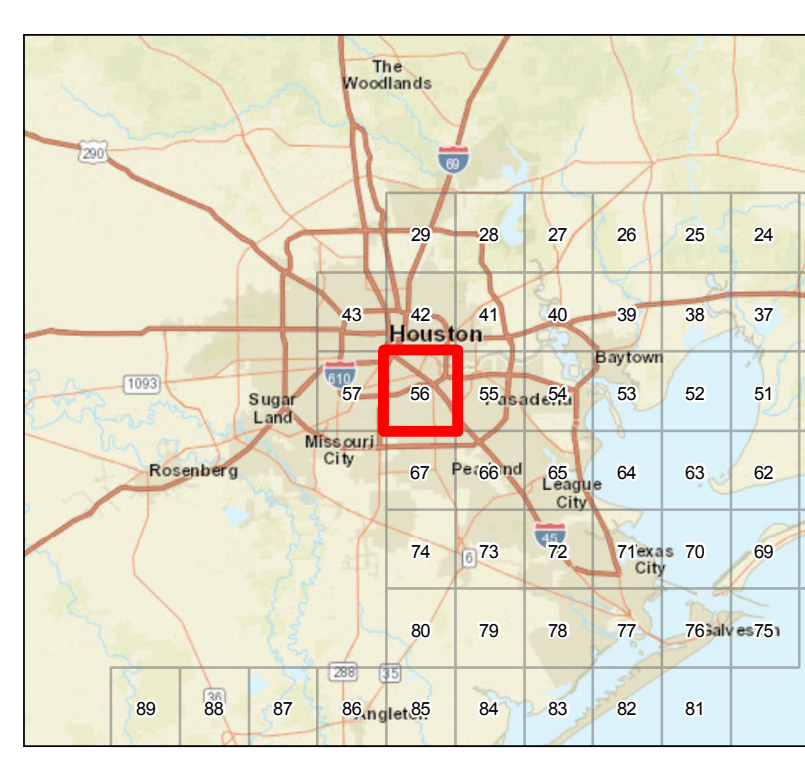
(PEARLAND, p.67)



Oil Spill Planning and Response Atlas

2016

The Texas General Land Office makes no representations or warranties regarding the accuracy or completeness of the information depicted on this map or the data from which it was produced. This map is not suitable for navigational purposes and does not purport to depict boundaries of private and public land.



Human Use Features

- Boat Ramp
- Facility
- Helipoint
- Geographic Response Plan

Map Base Layers

- County Road
- Interstate Highway
- State Highway
- US Highway
- Railroads
- Airport Runways
- Road
- GIWW
- Bays
- Intertidal Scrub/Shrub
- Freshwater Marshes
- Swamps and Flooded Woodlands
- Willow Thickets
- Lake / Pond
- Perennial River
- County Boundary
- City Limits

Priority Protection Areas

Species Icons Within Map Quad

- Amphibian T/E
- Mammal T/E
- Fish
- Gull/Tern
- Wading

ENVIRONMENTAL SENSITIVITY INDEX

- 10D Mangroves and Woody Vegetation
- 10C Freshwater Swamps
- 10B Freshwater Marshes
- 10A Salt and Brackish Water Marshes
- 9 Sheltered Tidal Flats
- 8C Sheltered Rocky/Karst Shores
- 8D Sheltered Scarps
- 8B Sheltered Riprap Structures
- 8A Sheltered Solid Manmade Structures
- 7 Exposed Tidal Flats
- 6B Exposed Riprap Structures
- 6A Gravel or Shell Beaches
- 5 Mixed Sand and Gravel or Shell Beaches
- 4 Coarse-Grained Sand Beaches
- 3B Scarps and Steep Slopes in Sand
- 3A Fine-Grained Sand Beaches
- 2B Wave-Cut Clay Platforms
- 2A Scarps and Steep Slopes in Clay
- 1 Exposed Walls and Other Solid Structures

Quadrant: PARK PLACE

Map # :56

Biological Information for this quadrant represents known concentration areas of occurrence.

Biological Resources

Bird

RARNUM	NAME	S F	T E	CONC	J	F	M	A	M	J	J	A	S	O	N	D	Nesting	Migrating	Molting
0029	Gulls			-	X	X	X	X	X	X	X	X	X	X	X	X	-	-	-
	Terns			-	X	X	X	X	X	X	X	X	X	X	X	X	-	-	-
	Wading birds			-	X	X	X	X	X	X	X	X	X	X	X	X	-	-	-

Fish

RARNUM	NAME	S F	T E	CONC	J	F	M	A	M	J	J	A	S	O	N	D	Spawning	Eggs	Larvae	Juveniles	Adults
0491	Rainwater killifish			-	X	X	X	X	X	X	X	X	X	X	X	X	FEB-JUN	-	-	-	-
	Sailfin molly			-	X	X	X	X	X	X	X	X	X	X	X	X	-	-	-	-	-
	Tarpon			RARE			X	X	X	X	X	X	X	X	X	X	-	-	-	MAR-NOV	-
	Blue catfish			-	X	X	X	X	X	X	X	X	X	X	X	X	APR-MAY	-	-	-	JAN-DEC
	Smallmouth buffalo			-	X	X	X	X	X	X	X	X	X	X	X	X	-	-	-	-	JAN-DEC

Marine Mammal

RARNUM	NAME	S F	T E	CONC	J	F	M	A	M	J	J	A	S	O	N	D	Mating	Calving	Pupping	Molting
0739	West Indian manatee	S/F	E/E	VERY-RARE						X	X	X					-	-	-	-

Reptile

RARNUM	NAME	S F	T E	CONC	J	F	M	A	M	J	J	A	S	O	N	D	Nesting	Hatching	Interesting	Juveniles	Adults
0764	Houston toad	S/F	E/E	-	X	X	X	X	X	X	X	X	X	X	X	X	FEB-JUN	FEB-JUN	-	JAN-DEC	JAN-DEC

Human Use Resources

Category	RARNUM	NAME	CONTACT	CONTACT INFO
Boat Ramp	2053	Buffalo Marine		
Facility	1119	M/V Sam Houston Pavillion	James Mills	713-670-6311
	1122	Jacob Stern & Sons, Inc.	Tim Carmack	713-926-8386
	1129	Westway Terminal Company #2	Brian Gaffigan	713-306-0952
	1130	NuStar Houston Asphalt Terminal	Rene Correa	832-244-3301
	1132	Huntsman International LLC	Andrew Adams	713-924-6408
	1144	USCG Sector Houston-Galveston	Joseph Robinson	281-387-7783
	1146	Valero - Houston East Asphalt Terminal	Bryan Sandlin	713-562-6022
	1148	SWS Holdings - Pasadena, LP	Jack Holmes	713-921-4492
	1151	Houston Mooring Co., Inc.	David Halbert	713-921-4488
	1155	Southwest Shipyard L.P.	Jack Holmes	281-860-3200
	1156	Valero Refining - Texas, L.P. (Houston)	Robert Moore	713-923-3506
	1157	Petro-Tech Environmental	Albert Mendez	713-592-3089
	1158	Westway Terminal Company #1	Jimmy Ritter	281-546-9775
	1161	SWS Holdings - Brady Island, LP	Jack Holmes	713-967-6300
Heliport	6039	CHRISTUS ST JOSEPH HOSPITAL	XA67	HOUSTON, TX 77002
	6048	USCG PORT SAFETY STATION	6XS6	GALENA PARK, TX 77547
	6063	LEWIS ELECTRIC APPARATUS REPAIR INC	TS16	HOUSTON, TX 77012
	6065	MARINE CONSULTANTS INC	85XS	HOUSTON, TX 77017
	6081	HOUSTON POLICE COMMAND STATION	9TX0	HOUSTON, TX 77048
	6083	POLICE HELICOPTER PATROL	24TE	HOUSTON, TX 77061

1. Incident Name	2. Operational Period (Date/Time)	Assignment List ICS 204-OS
------------------	-----------------------------------	----------------------------

3. Branch	4. Division/Group
-----------	-------------------

5. Operations Personnel	_____
Operations Section Chief	_____
Branch Director	_____
Division/Group Supervisor	_____

6. Resources Assigned This Period						"X" Indicates 204a attachment with special instructions
Resource Identifier	Leader	Contact Info #	# of Persons	Reporting Info/Notes/Remarks		

7. Assignments

SAFETY NOTE: Crews operating near ship channel should expect wake action as vessels pass. Debris is a common occurrence. In security zone.

8. Site Number: 56-A	9. Quad Name Park Place	10. NOAA Chart # 11325	11. GLO Atlas Page # 56	12. County Harris
-------------------------	----------------------------	---------------------------	----------------------------	----------------------

13. Site Information: Harrisburg Bend Entrance (SE) Southeast entrance into Harrisburg Bend. Harrisburg Bend extends around Brady Island, on the Houston Ship Channel. The southeast entrance is adjacent to Southwest Shipyard Brady Island facility.	14. Latitude From: 29-43-25N	To:	
	15. Longitude From: 95-16-15W	To:	

16. Closest Boat Ramp River Terrace Park	17. Distance From Ramp 10 miles	18. Boat Type Multiple Types
---	------------------------------------	---------------------------------

19. Directions From Local Sector Take I-610 north Clinton Drive- go North - Merge onto Wayside Drive. Turn left onto Harrisburg. Left onto Cypress.	20. Closest Airport Houston Hobby (HOU)
	21. Closest Helo Spot Houston Hobby (HOU)

22. Trustee/Contact Numbers USCG: (281) 464-4800 RRC: (713) 869-5001 USCG DUTY: (800) 424-4800 TPWD: (281) 842-8100 TGLO: (800) 832-8224 NRDA: (512) 463 -9309 TCEQ: (713) 767-3563 USFWS: (281) 286-8282	23. Resources at Risk Atlas Priority N/A Environmental N/A Economic High	24. Width of inlet 250' in ft. 25. Water depth in ft. 17' 26. Current Slow 27. No. of Personnel 2
---	---	---

25. Booming Strategy Recommendation Boom entrance to prevent oil from migrating into or out of Harrisburg Bend
--

AERIAL PHOTO



ON SITE PHOTO



29. Prepared By: Assignment List	30. Reviewed by (PSC) ICS 204 OS (Geographic Response Plan)	31. Reviewed by (OSC): Project Updated:
-------------------------------------	--	--

"Response strategies may need to be modified to account for changes due to seasonality, weather conditions, spill characteristics, tides and any other considerations."

1. Incident Name	2. Operational Period (Date/Time)	Assignment List ICS 204-OS
------------------	-----------------------------------	----------------------------

3. Branch	4. Division/Group
-----------	-------------------

5. Operations Personnel	Operations Section Chief _____
Branch Director	_____
Division/Group Supervisor	_____

6. Resources Assigned This Period						"X" Indicates 204a attachment with special instructions
Resource Identifier	Leader	Contact Info #	# of Persons	Reporting Info/Notes/Remarks		

7. Assignments

SAFETY NOTE: Crews operating near ship channel should expect wake action as vessels pass. Debris is a common occurrence. In security zone.

8. Site Number: 56-B	9. Quad Name Park Place	10. NOAA Chart # 11325	11. GLO Atlas Page # 56	12. County Harris
-------------------------	----------------------------	---------------------------	----------------------------	----------------------

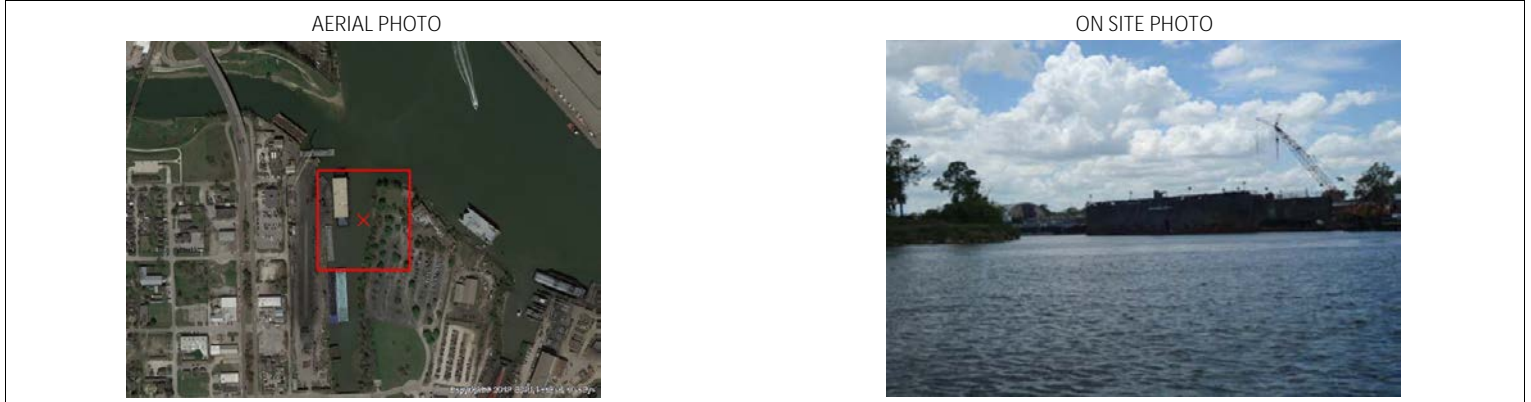
13. Site Information: Harrisburg Bend Entrance (NW) Northwest entrance into Harrisburg Bend. Harrisburg Bend extends around Brady Island, on the Houston Ship Channel. It is adjacent to Southwest Shipyard Brady Island facility.	14. Latitude From: 29-43-35N	To:	
	15. Longitude From: 95-16-36W	To:	

16. Closest Boat Ramp River Terrace Park	17. Distance From Ramp 10 miles	18. Boat Type Multiple Types
---	------------------------------------	---------------------------------

19. Directions From Local Sector Take I-610 north Clinton Drive- go North - Merge onto Wayside Drive. Turn left onto Harrisburg. Left on Cypress	20. Closest Airport Houston Hobby (HOU)		21. Closest Helo Spot Houston Hobby (HOU)
---	--	--	--

22. Trustee/Contact Numbers USCG: (281) 464-4800 RRC: (713) 869-5001 USCG DUTY: (800) 424-4800 TPWD: (281) 842-8100 TGLO: (800) 832-8224 NRDA: (512) 463 -9309 TCEQ: (713) 767-3563 USFWS: (281) 286-8282	23. Resources at Risk Atlas Priority N/A Environmental N/A Economic High	24. Width of inlet 250' in ft. 25. Water depth in ft. 23' 26. Current Slow 27. No. of Personnel 2
---	---	---

25. Booming Strategy Recommendation Boom to prevent migration of oil into or out of Harrisburg Bend



29. Prepared By: Assignment List	30. Reviewed by (PSC) ICS 204 OS (Geographic Response Plan)	31. Reviewed by (OSC): Project Updated:
-------------------------------------	--	--

"Response strategies may need to be modified to account for changes due to seasonality, weather conditions, spill characteristics, tides and any other considerations."

1. Incident Name	2. Operational Period (Date/Time)	Assignment List ICS 204-OS
------------------	-----------------------------------	----------------------------

3. Branch	4. Division/Group
-----------	-------------------

5. Operations Personnel	_____
Operations Section Chief	_____
Branch Director	_____
Division/Group Supervisor	_____

6. Resources Assigned This Period						"X" Indicates 204a attachment with special instructions
Resource Identifier	Leader	Contact Info #	# of Persons	Reporting Info/Notes/Remarks		

7. Assignments

SAFETY NOTE: Debris is a common occurrence. In security zone.

8. Site Number: 56-C	9. Quad Name Park Place	10. NOAA Chart # 11325	11. GLO Atlas Page # 56	12. County Harris
-------------------------	----------------------------	---------------------------	----------------------------	----------------------

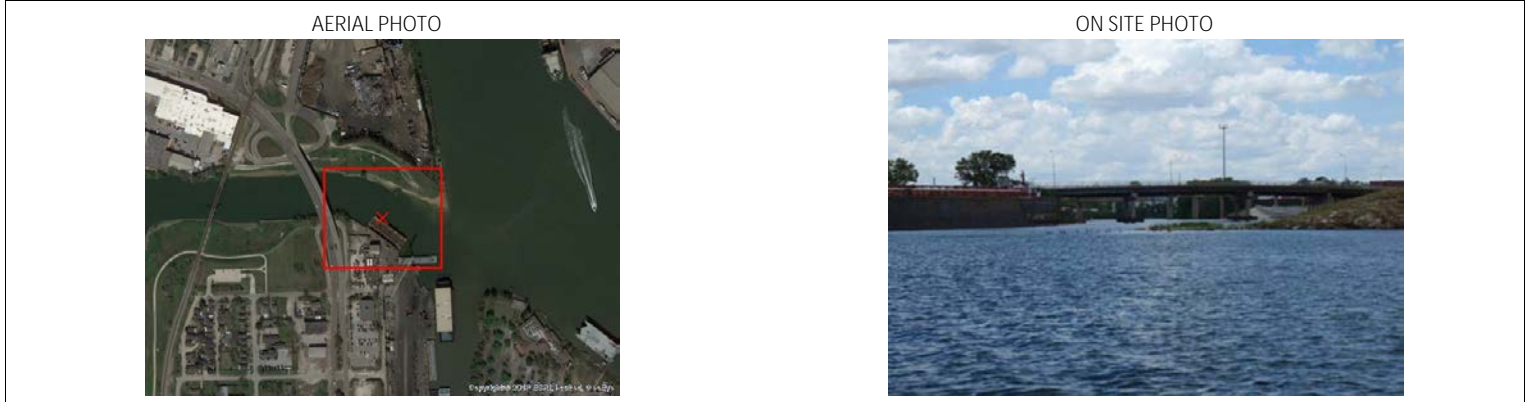
13. Site Information: Bray's Bayou Entrance to Brays Bayou. Brays Bayou extends from the Houston Ship Channel westward for several miles into Houston. The entrance is heavily commercialized, but most of the bayou has grassy banks.	14. Latitude From: 29-43-37N	To:	
	15. Longitude From: 95-16-38W	To:	

16. Closest Boat Ramp River Terrace Park	17. Distance From Ramp 10 NM	18. Boat Type Multiple Types
---	---------------------------------	---------------------------------

19. Directions From Local Sector Take I-610 north Clinton Drive- go North - Merge onto Wayside Drive. Turn left onto Harrisburg and proceed to Brays Bayou crossing.	20. Closest Airport Houston Hobby (HOU)		
	21. Closest Helo Spot Houston Hobby (HOU)		

22. Trustee/Contact Numbers USCG: (281) 464-4800 RRC: (713) 869-5001 USCG DUTY: (800) 424-4800 TPWD: (281) 842-8100 TGLO: (800) 832-8224 NRDA: (512) 463 -9309 TCEQ: (713) 767-3563 USFWS: (281) 286-8282	23. Resources at Risk Atlas Priority N/A Environmental N/A Economic High	24. Width of inlet 150' in ft. 25. Water depth in ft. 22' 26. Current Slow 27. No. of Personnel 2
---	---	--

25. Booming Strategy Recommendation Boom close to spill site to prevent migration.
--



29. Prepared By: Assignment List	30. Reviewed by (PSC) ICS 204 OS (Geographic Response Plan)	31. Reviewed by (OSC): Project Updated:
-------------------------------------	--	--

"Response strategies may need to be modified to account for changes due to seasonality, weather conditions, spill characteristics, tides and any other considerations."

1. Incident Name	2. Operational Period (Date/Time)	Assignment List ICS 204-OS
------------------	-----------------------------------	----------------------------

3. Branch	4. Division/Group
-----------	-------------------

5. Operations Personnel	
Operations Section Chief	_____
Branch Director	_____
Division/Group Supervisor	_____

6. Resources Assigned This Period "X" Indicates 204a attachment with special instructions

Resource Identifier	Leader	Contact Info #	# of Persons	Reporting Info/Notes/Remarks

7. Assignments

SAFETY NOTE: During heavy rainfall currents can become dangerous and debris may be a problem. Watch out for transients known to frequent area.

8. Site Number: 56-D	9. Quad Name Settegast	10. NOAA Chart # 11325	11. GLO Atlas Page # 56	12. County Harris
-------------------------	---------------------------	---------------------------	----------------------------	----------------------

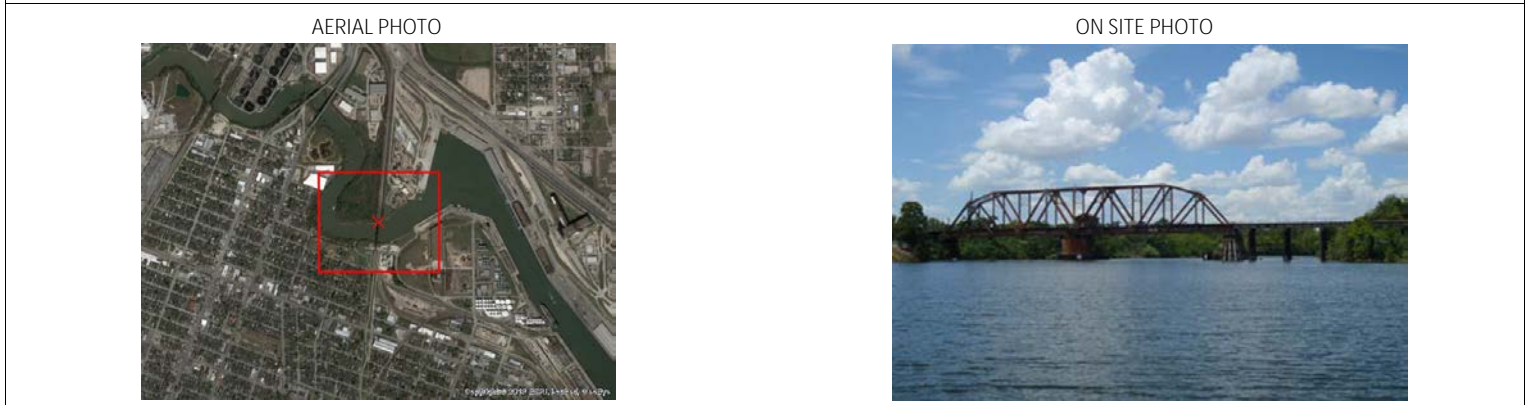
13. Site Information: Buffalo Bayou Buffalo Bayou above Turning Basin. Buffalo Bayou above the turning basin winds through downtown Houston. It has mostly steep mud banks. Must transit thru security zone to reach by water.	14. Latitude From: 29 44' 50"N	To:	
	15. Longitude From: 95 17' 37"W	To:	

16. Closest Boat Ramp River Terrace Park	17. Distance From Ramp 11 miles	18. Boat Type Multiple Types
---	------------------------------------	---------------------------------

19. Directions From Local Sector Take I-610 north Clinton Drive- go North - Merge onto Wayside Drive. Turn left onto Ave R. Site is located at intersection of Ave R and JW Peavy.	20. Closest Airport Houston Hobby (HOU)
	21. Closest Helo Spot Houston Hobby (HOU)

22. Trustee/Contact Numbers	23. Resources at Risk	24. Width of inlet 400' in ft.
USCG: (281) 464-4800 RRC: (713) 869-5001	Atlas Priority N/A	25. Water depth in ft. 22'
USCG DUTY: (800) 424-4800 TPWD: (281) 842-8100	Environmental N/A	26. Current Slow
TGLO: (800) 832-8224 NRDA: (512) 463 -9309		27. No. of Personnel 2
TCEQ: (713) 767-3563 USFWS: (281) 286-8282	Economic N/A	

25. Booming Strategy Recommendation Boom mouth of Buffalo Bayou above turning basin to prevent oil from entering or exiting bayou



29. Prepared By:	30. Reviewed by (PSC)	31. Reviewed by (OSC):
Assignment List	ICS 204 OS (Geographic Response Plan)	Project Updated:

"Response strategies may need to be modified to account for changes due to seasonality, weather conditions, spill characteristics, tides and any other considerations."