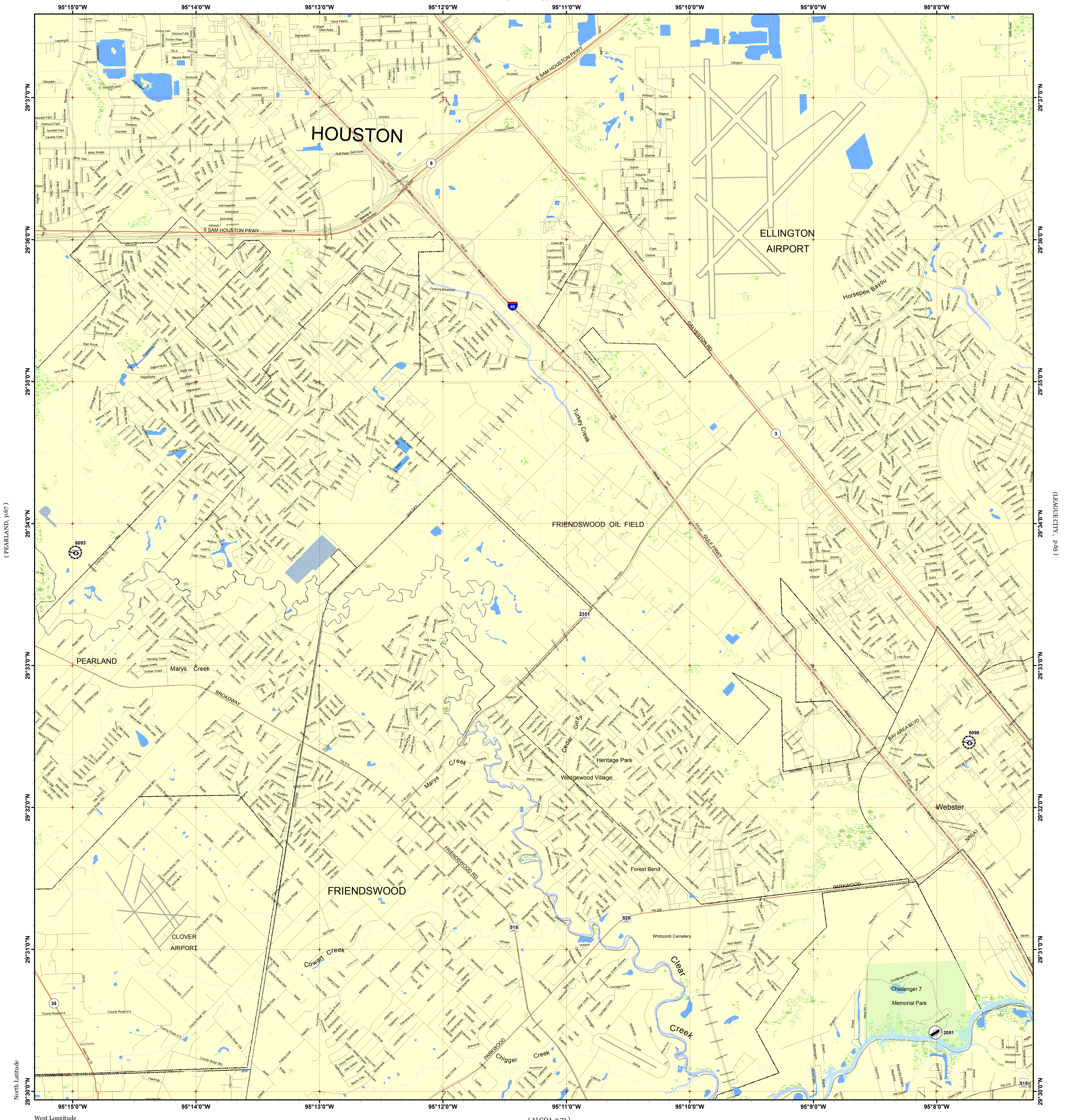


# FRIENDSWOOD

(PASADENA, p.55)

[Click Here or Scroll Down for Associated Map Data](#)

Click on the Geographic Response Plan Target to View the ICS Form



(PEARLAND, p.67)

(LEAGUE CITY, p.63)

North Latitude

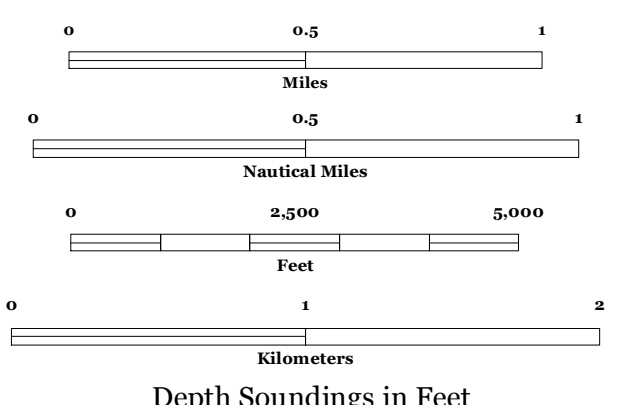
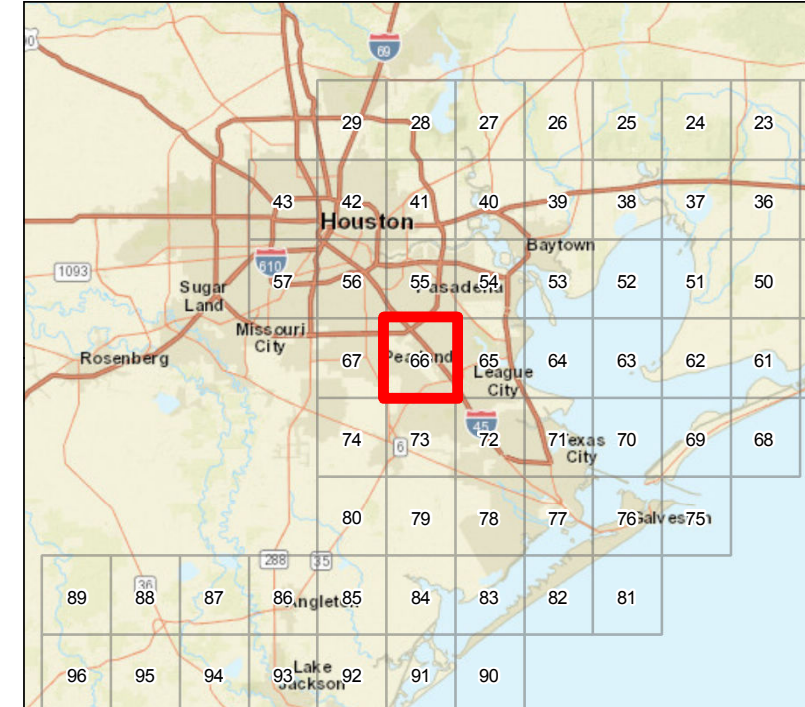
West Longitude

(ALGOA, p.73)



Oil Spill Planning and Response Atlas  
2016

The Texas General Land Office makes no representations or warranties regarding the accuracy or completeness of the information depicted on this map or the data from which it was produced. This map is not suitable for navigational purposes and does not purport to depict boundaries of private and public land.



### Human Use Features

- Boat Ramp
- Heliport

### Map Base Layers

- County Road
- Interstate Highway
- State Highway
- Railroads
- Airport Runways
- Road
- County/Municipal Parks
- Exposed Lake Shore
- Freshwater Marshes
- Swamps and Flooded Woodlands
- Willow Thickets
- Lake / Pond
- Tidally Influenced River
- Perennial River
- County Boundary
- City Limits

### Priority Protection Areas

### Species Icons Within Map Quad

- Amphibian T/E

### ENVIRONMENTAL SENSITIVITY INDEX

- 10D Mangroves and Woody Vegetation
- 10C Freshwater Swamps
- 10B Freshwater Marshes
- 10A Salt and Brackish Water Marshes
- 9 Sheltered Tidal Flats
- 8C Sheltered Rocky/Karst Shores
- 8D Sheltered Scarps
- 8B Sheltered Riprap Structures
- 8A Sheltered Solid Manmade Structures
- 7 Exposed Tidal Flats
- 6B Exposed Riprap Structures
- 6A Gravel or Shell Beaches
- 5 Mixed Sand and Gravel or Shell Beaches
- 4 Coarse-Grained Sand Beaches
- 3B Scarps and Steep Slopes in Sand
- 3A Fine-Grained Sand Beaches
- 2B Wave-Cut Clay Platforms
- 2A Scarps and Steep Slopes in Clay
- 1 Exposed Walls and Other Solid Structures