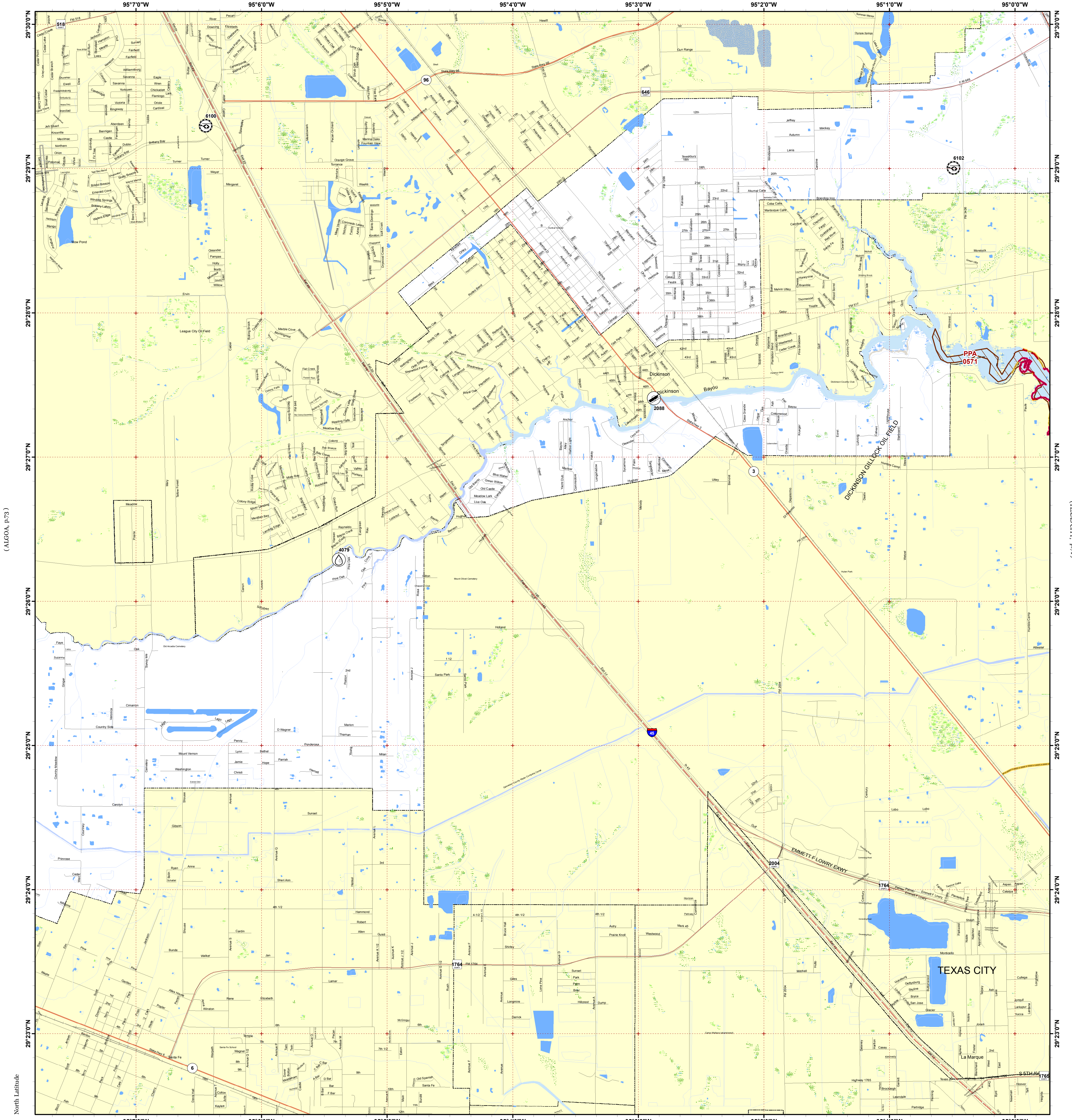


# DICKINSON

(LEAGUE CITY, p.65)

[Click Here or Scroll Down for Associated Map Data](#)

Click on the Geographic Response Plan Target to View the ICS Form



(ALGEOA, p.73)

(TEXAS CITY, p.71)

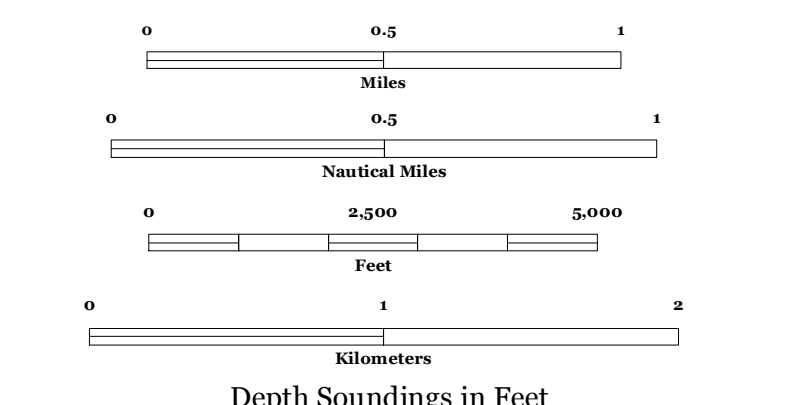
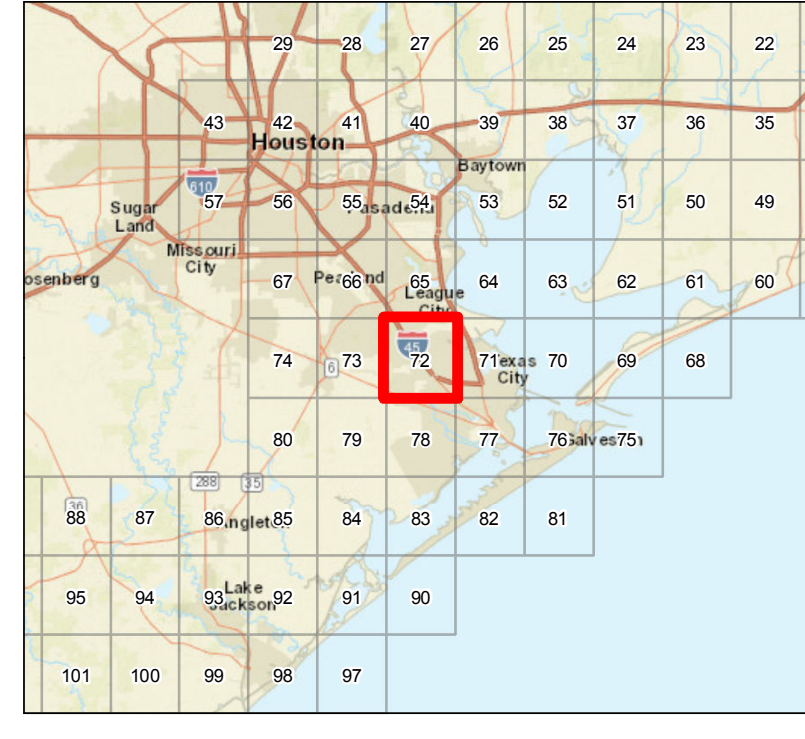
West Longitude (HITCHCOCK, p.78)



Oil Spill Planning and Response Atlas

2016

The Texas General Land Office makes no representations or warranties regarding the accuracy or completeness of the information depicted on this map or the data from which it was produced. This map is not suitable for navigational purposes and does not purport to depict boundaries of private and public land.



### Human Use Features

- Boat Ramp
- Helipoint
- Water Intake

### Map Base Layers

- County Road
- Interstate Highway
- State Highway
- Railroads
- Airport Runways
- Road
- Bays
- Salt and Brackish Marshes
- Beach or Tidal Flat
- Exposed Lake Shore
- Freshwater Marshes
- Swamps and Flooded Woodlands
- Willow Thickets
- Lake / Pond
- Perennial River
- County Boundary
- City Limits

### Priority Protection Areas

- MEDIUM

### Species Icons Within Map Quad

- Fish
- Mammal T/E

### ENVIRONMENTAL SENSITIVITY INDEX

- 10D Mangroves and Woody Vegetation
- 10C Freshwater Swamps
- 10B Freshwater Marshes
- 10A Salt and Brackish Water Marshes
- 9 Sheltered Tidal Flats
- 8C Sheltered Rocky/Karst Shores
- 8D Sheltered Scarp
- 8B Sheltered Riprap Structures
- 8A Sheltered Solid Manmade Structures
- 7 Exposed Tidal Flats
- 6B Exposed Riprap Structures
- 6A Gravel or Shell Beaches
- 5 Mixed Sand and Gravel or Shell Beaches
- 4 Coarse-Grained Sand Beaches
- 3B Scarp and Steep Slopes in Sand
- 3A Fine-Grained Sand Beaches
- 2B Wave-Cut Clay Platforms
- 2A Scarp and Steep Slopes in Clay
- 1 Exposed Walls and Other Solid Structures

# Quadrant: DICKINSON

Map # :72

Biological Information for this quadrant represents known concentration areas of occurrence.

## Habitat Priority Protection Areas

PPA ID	PRIORITY	POLY DESCRIPTION	BIRDS RANK	BIRDS DESCRIPTION	FISH RANK	FISH DESCRIPTION	WETLANDS RANK	WETLANDS DESCRIPTION
PPA0571	MEDIUM	North shores of Dickinson Bayou			HIGH	Nursery	HIGH	Fringe marsh of smooth cordgrass

## Biological Resources

### Fish

RARNUM	NAME	S F	T E	CONC	J	F	M	A	M	J	J	A	S	O	N	D	Spawning	Eggs	Larvae	Juveniles	Adults
0483	Tarpon			RARE			X	X	X	X	X	X	X	X	X		-	-	-	MAR-NOV	-

### Marine Mammal

RARNUM	NAME	S F	T E	CONC	J	F	M	A	M	J	J	A	S	O	N	D	Mating	Calving	Pupping	Molting
0739	West Indian manatee	S/F	E/E	VERY-RARE						X	X	X					-	-	-	-

## Human Use Resources

	RARNUM	NAME	CONTACT	CONTACT INFO
Boat Ramp	2088	Dickinson Bayou Ramp		galvestonsanjacbraz@dickinsonsh3
Heliport	6100	BAY ELECTRIC SUPPLY	T95	LEAGUE, TX 77573
	6102	TALON AIR	T34	DICKINSON, TX 77539
	RARNUM	NAME	CONTACT	CONTACT INFO
Water Intake	4079	CHAPARRAL RECREATION ASSOC.		