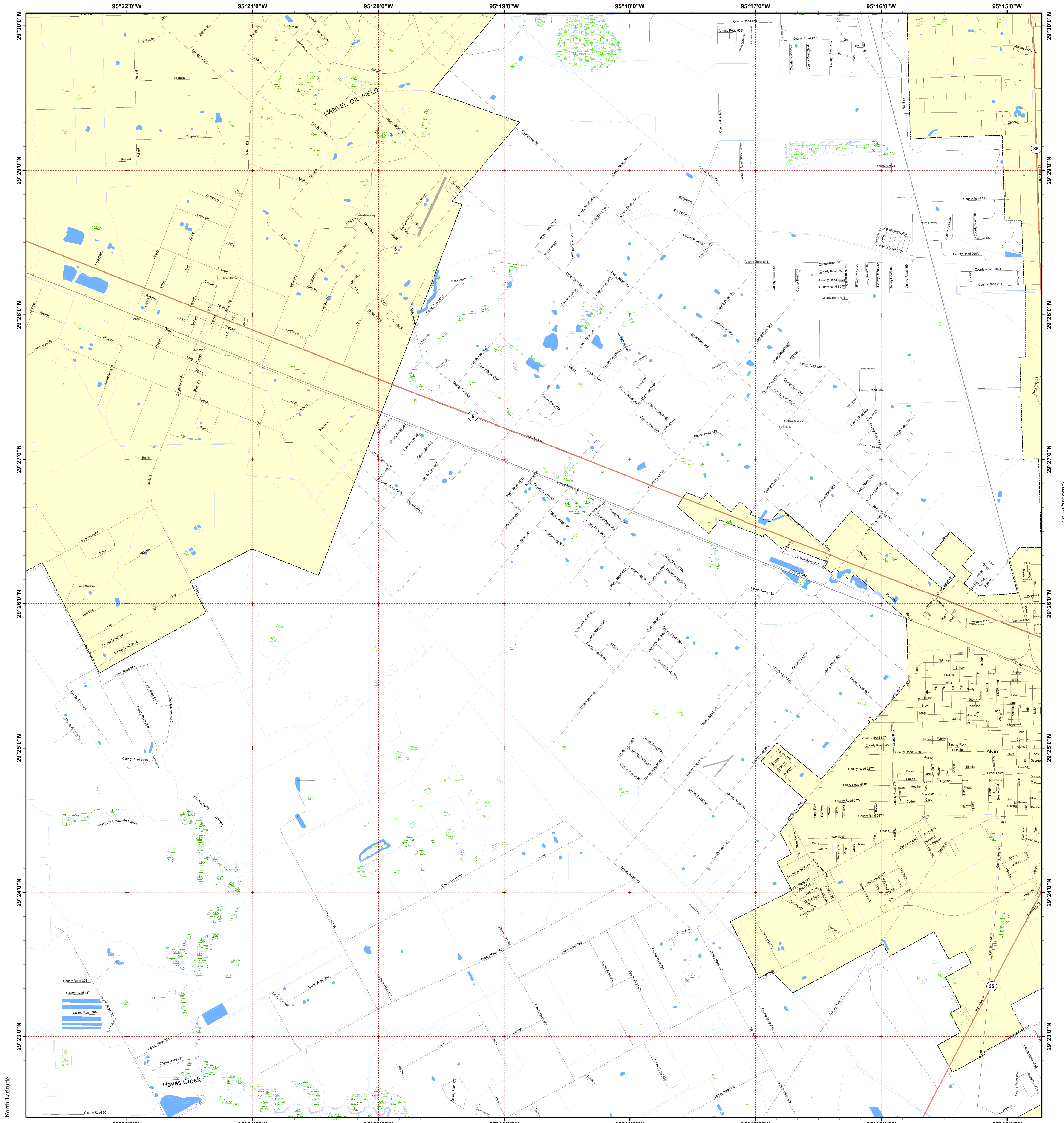


MANVEL

(PEARLAND, p.67)

[Click Here or Scroll Down for Associated Map Data](#)

[Click on the Geographic Response Plan Target to View the ICS Form](#)

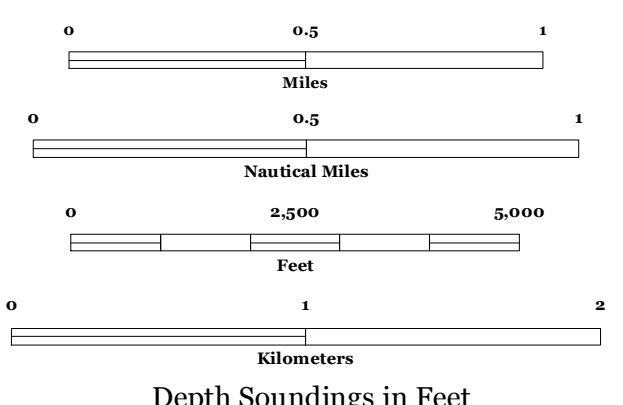
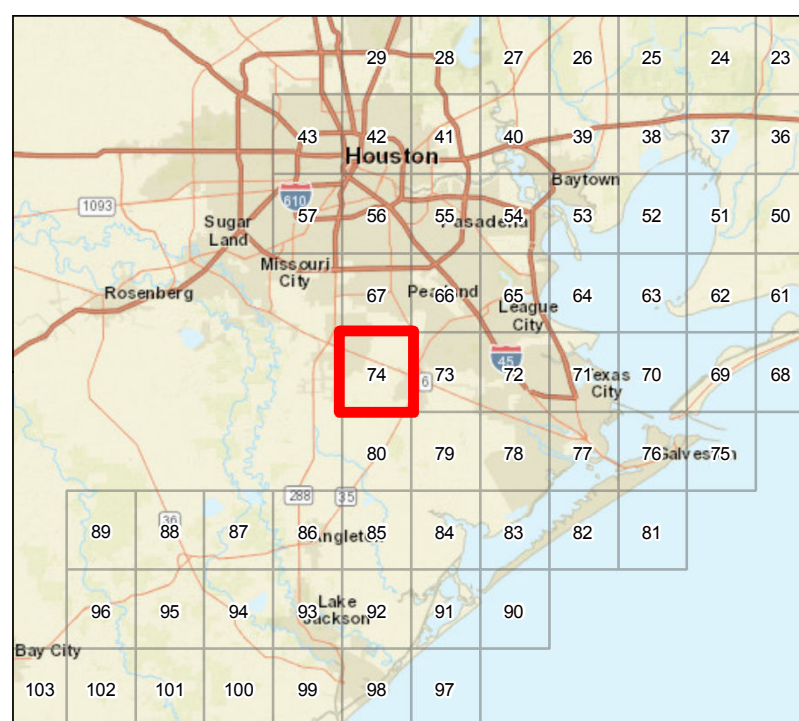


(Scale 1:100,000)

(LIVERPOOL, p.80)



Oil Spill Planning and Response Atlas



Human Use Features

Map Base Layers

Species Icons Within Map Quad

ENVIRONMENTAL SENSITIVITY INDEX

- State Highway
- Railroads
- Airport Runways
- Road
- Freshwater Marshes
- Swamps and Flooded Woodlands
- Willow Thickets
- Lake / Pond
- Perennial River
- County Boundary
- City Limits

- 10D Mangroves and Woody Vegetation
- 10C Freshwater Swamps
- 10B Freshwater Marshes
- 10A Salt and Brackish Water Marshes
- 9 Sheltered Tidal Flats
- 8C Sheltered Rocky/Karst Shores
- 8D Sheltered Scarp
- 8B Sheltered Riprap Structures
- 8A Sheltered Solid Manmade Structures
- 7 Exposed Tidal Flats
- 6B Exposed Riprap Structures
- 6A Gravel or Shell Beaches
- 5 Mixed Sand and Gravel or Shell Beaches
- 4 Coarse-Grained Sand Beaches
- 3B Scarp and Steep Slopes in Sand
- 3A Fine-Grained Sand Beaches
- 2B Wave-Cut Clay Platforms
- 2A Scarp and Steep Slopes in Clay
- 1 Exposed Walls and Other Solid Structures

Priority Protection Areas

The Texas General Land Office makes no representations or warranties regarding the accuracy or completeness of the information depicted on this map or the data from which it was produced. This map is not suitable for navigational purposes and does not purport to depict boundaries of private and public land.