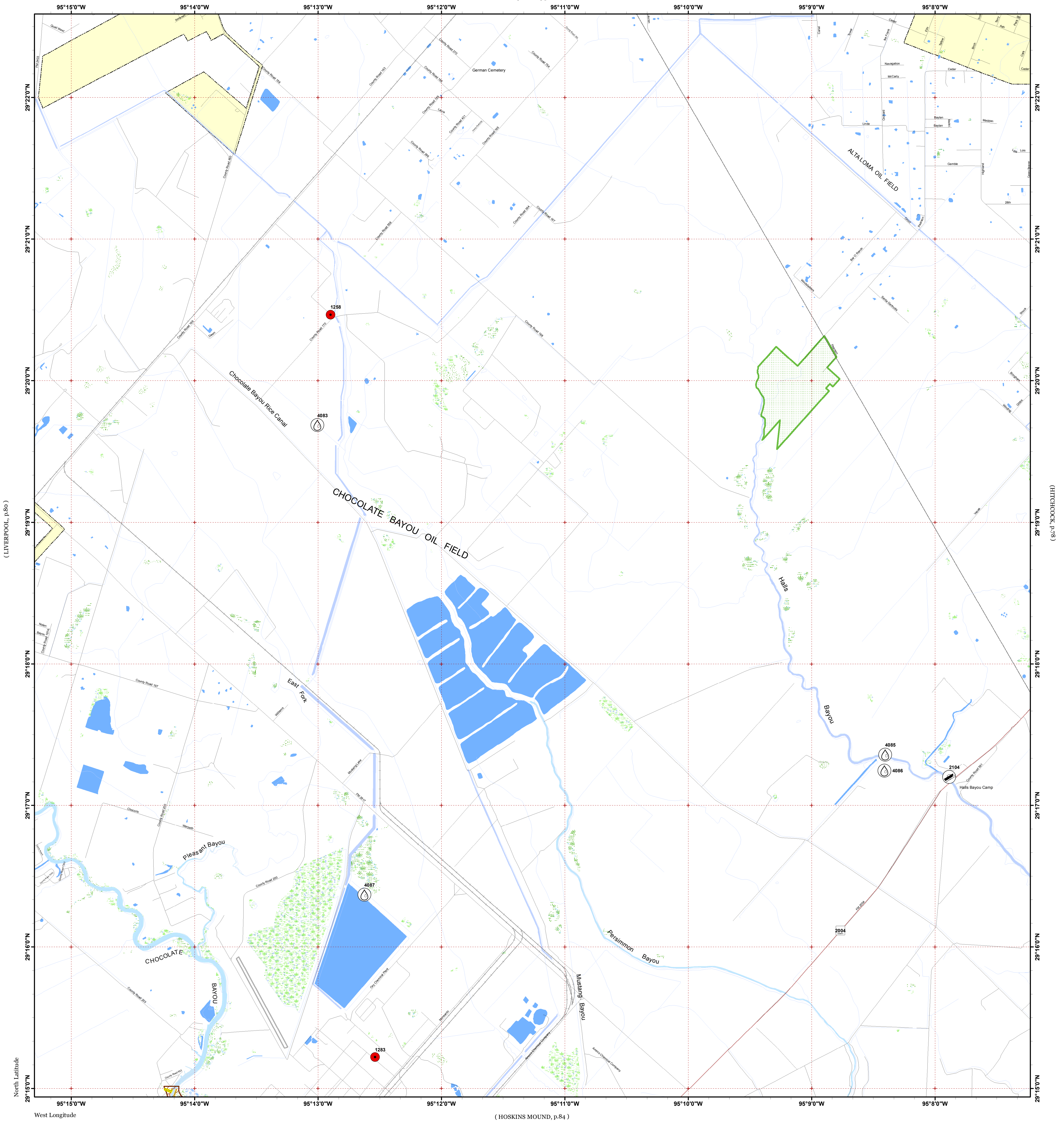


MUSTANG BAYOU

(ALGOA, p.73)

[Click Here or Scroll Down for Associated Map Data](#)

Click on the Geographic Response Plan Target to View the ICS Form



(LIVERPOOL, p.80)

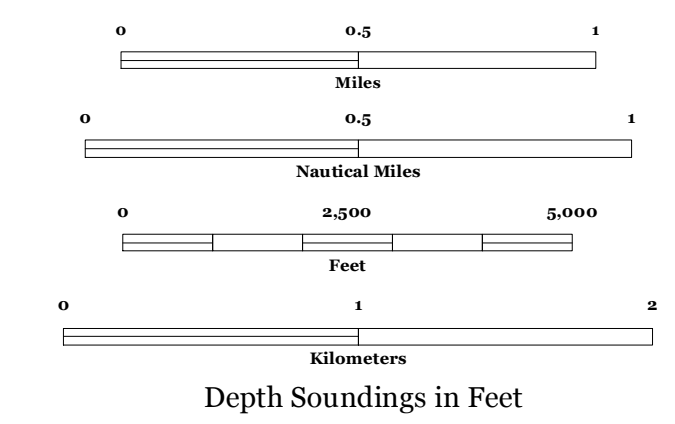
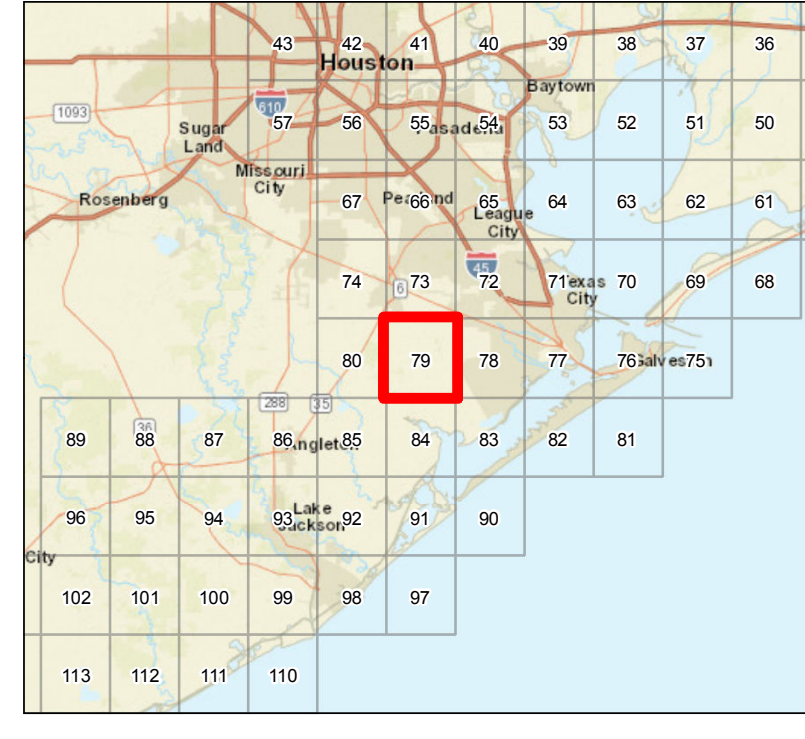
(LITCHCOCK, p.78)

(HOSKINS MOUND, p.84)



Oil Spill Planning and Response Atlas
2016

The Texas General Land Office makes no representations or warranties regarding the accuracy or completeness of the information depicted on this map or the data from which it was produced. This map is not suitable for navigational purposes and does not purport to depict boundaries of private and public land.



Human Use Features

- Boat Ramp
- Facility
- Water Intake

Map Base Layers

- County Road
- Railroads
- Airport Runways
- Road
- Wildlife Refuge
- Bays
- Freshwater Marshes
- Swamps and Flooded Woodlands
- Willow Thickets
- Lake / Pond
- Tidally Influenced River
- Perennial River
- County Boundary
- City Limits

Priority Protection Areas

- HIGH

Species Icons Within Map Quad

- Turtle
- Mammal T/E
- Benthic Marine
- Cephalopod
- Crab
- Shrimp
- Fish
- Diving Bird
- Gull/Tern
- Raptor
- Wading
- Waterfowl

ENVIRONMENTAL SENSITIVITY INDEX

- 10D Mangroves and Woody Vegetation
- 10C Freshwater Swamps
- 10B Freshwater Marshes
- 10A Salt and Brackish Water Marshes
- 9 Sheltered Tidal Flats
- 8C Sheltered Rocky/Karst Shores
- 8D Sheltered Scarps
- 8B Sheltered Riprap Structures
- 8A Sheltered Solid Manmade Structures
- 7 Exposed Tidal Flats
- 6B Exposed Riprap Structures
- 6A Gravel or Shell Beaches
- 5 Mixed Sand and Gravel or Shell Beaches
- 4 Coarse-Grained Sand Beaches
- 3B Scarps and Steep Slopes in Sand
- 3A Fine-Grained Sand Beaches
- 2B Wave-Cut Clay Platforms
- 2A Scarps and Steep Slopes in Clay
- 1 Exposed Walls and Other Solid Structures

Quadrant: MUSTANG BAYOU

Map # :79

Biological Information for this quadrant represents known concentration areas of occurrence.

Biological Resources

Bird

RARNUM	NAME	S F	T E	CONC	J	F	M	A	M	J	J	A	S	O	N	D	Nesting	Migrating	Molting
0075	American white pelican			-	X	X	X							X	X	X	-	-	-
	Brown pelican			-	X	X	X	X	X	X	X	X	X	X	X	X	-	-	-
	Gulls			-	X	X	X	X	X	X	X	X	X	X	X	X	-	-	-
	Terns			-	X	X	X	X	X	X	X	X	X	X	X	X	-	-	-
	Raptors			-	X	X	X	X	X	X	X	X	X	X	X	X	-	-	-
	Marsh birds			-	X	X	X	X	X	X	X	X	X	X	X	X	-	-	-
	Wading birds			-	X	X	X	X	X	X	X	X	X	X	X	X	-	-	-
	Dabbling ducks			-	X	X	X	X	X				X	X	X	X	-	-	-
	Waterfowl			-	X	X	X	X	X	X	X	X	X	X	X	X	-	-	-

Fish

RARNUM	NAME	S F	T E	CONC	J	F	M	A	M	J	J	A	S	O	N	D	Spawning	Eggs	Larvae	Juveniles	Adults
0556	Gizzard shad			COMMON	X	X	X	X	X	X	X	X	X	X	X	X	-	-	-	-	JAN-DEC
	Atlantic croaker			HIGHLY-ABUNDANT	X	X	X	X	X	X	X	X	X	X	X	X	-	-	JAN-JUN	JAN-DEC	JAN-DEC
	Bay anchovy			ABUNDANT	X	X	X	X	X	X	X	X	X	X	X	X	MAR-NOV	MAR-NOV	MAR-NOV	MAR-NOV	JAN-DEC
	Black drum			COMMON	X	X	X	X	X	X	X	X	X	X	X	X	-	-	-	JAN-DEC	JAN-DEC
	Gafftopsail catfish			COMMON				X	X	X	X	X	X				APR-MAY	-	-	APR-OCT	APR-OCT
	Gulf menhaden			HIGHLY-ABUNDANT	X	X	X	X	X	X	X	X	X	X	X	X	-	-	-	JAN-DEC	APR-DEC
	Hardhead catfish			COMMON	X	X	X	X	X	X	X	X	X	X	X	X	MAY-AUG	MAY-SEP	MAY-SEP	APR-NOV	JAN-DEC
	Pinfish			COMMON		X	X	X	X	X	X	X	X	X	X	X	-	-	-	FEB-OCT	APR-DEC
	Red drum			ABUNDANT	X	X	X	X	X	X	X	X	X	X	X	X	-	-	SEP-NOV	JAN-DEC	JAN-DEC
	Sand seatrout			COMMON	X	X	X	X	X	X	X	X	X	X	X	X	-	-	-	JAN-DEC	JAN-DEC
	Sheepshead			HIGHLY-ABUNDANT	X	X	X	X	X	X	X	X	X	X	X	X	-	-	-	JUN-MAR*	JAN-DEC
	Southern flounder			ABUNDANT	X	X	X	X	X	X	X	X	X	X	X	X	-	-	-	JAN-DEC	JAN-DEC
	Southern kingfish			RARE								X	X	X			-	-	-	AUG-OCT	-
	Spot			HIGHLY-ABUNDANT	X	X	X	X	X	X	X	X	X	X	X	X	-	-	-	FEB-NOV	JAN-DEC
	Spotted seatrout			COMMON	X	X	X	X	X	X	X	X	X	X	X	X	APR-OCT	APR-OCT	APR-OCT	AUG-NOV	JAN-DEC
	Striped mullet			COMMON	X	X	X	X	X	X	X	X	X	X	X	X	-	-	-	JAN-DEC	JAN-DEC
	Tarpon			RARE			X	X	X	X	X	X	X	X	X		-	-	-	MAR-NOV	-
	White mullet			ABUNDANT			X	X	X	X	X	X	X	X	X		-	-	-	MAR-NOV	-
	Gulf killifish			COMMON	X	X	X	X	X	X	X	X	X	X	X	X	MAR-SEP	MAR-SEP	MAR-OCT	JAN-DEC	JAN-DEC
	Silver perch			COMMON	X	X	X	X	X	X	X	X	X	X	X	X	MAY-SEP	MAY-SEP	MAY-SEP	JAN-DEC	JAN-DEC
	Silversides			COMMON	X	X	X	X	X	X	X	X	X	X	X	X	MAR-AUG	MAR-AUG	MAR-AUG	JAN-DEC	JAN-DEC
	Alligator gar			COMMON	X	X	X	X	X	X	X	X	X	X	X	X	-	-	-	JAN-DEC	JAN-DEC
	Spotted gar			COMMON	X	X	X	X	X	X	X	X	X	X	X	X	APR-MAY	APR-MAY	-	JAN-DEC	JAN-DEC
	Atlantic spadefish			RARE				X	X	X	X	X	X	X	X		-	-	-	APR-NOV	-
	Bay whiff			COMMON	X	X	X	X	X	X	X	X	X	X	X	X	-	-	-	APR-DEC	JAN-DEC
	Spotfin mojarra			COMMON						X	X	X	X	X	X		-	-	-	-	-
	Creville jack			COMMON			X	X	X	X	X	X	X	X	X		-	-	-	MAR-NOV	-
	Spanish mackerel			RARE									X	X			-	-	-	SEP-OCT	SEP-OCT

Invertebrate

RARNUM	NAME	S F	T E	CONC	J	F	M	A	M	J	J	A	S	O	N	D	Spawning	Eggs	Larvae	Juveniles	Adults
0666	Brief squid			COMMON	X	X	X	X	X	X	X	X	X	X	X	X	MAR-DEC	MAR-DEC	MAR-DEC	JAN-DEC	JAN-DEC
	Blue crab			ABUNDANT	X	X	X	X	X	X	X	X	X	X	X	X	MAR-OCT	MAR-OCT	MAR-NOV	JAN-DEC	JAN-DEC
	Gulf stone crab			RARE	X	X	X	X	X	X	X	X	X	X	X	X	-	-	-	JAN-DEC	JAN-DEC
	Lesser blue crab			COMMON				X	X					X			-	-	-	OCT-MAY*	-
	Brown shrimp			HIGHLY-ABUNDANT		X	X	X	X	X	X	X	X	X	X	X	-	-	FEB-APR	MAR-DEC	-
	Grass shrimp			ABUNDANT	X	X	X	X	X	X	X	X	X	X	X	X	JAN-DEC	JAN-DEC	JAN-DEC	JAN-DEC	JAN-DEC
	White shrimp			HIGHLY-ABUNDANT			X	X	X	X	X	X	X	X	X	X	-	-	JUN-OCT	JUN-DEC	MAR-DEC

Marine Mammal

RARNUM	NAME	S F	T E	CONC	J	F	M	A	M	J	J	A	S	O	N	D	Mating	Calving	Pupping	Molting
0739	West Indian manatee	S/F	E/E	VERY-RARE						X	X	X					-	-	-	-

Reptile

RARNUM	NAME	S F	T E	CONC	J	F	M	A	M	J	J	A	S	O	N	D	Nesting	Hatching	Interesting	Juveniles	Adults
0747	Diamondback terrapin			-	X	X	X	X	X	X	X	X	X	X	X	X	APR-MAY	JUN-SEP	-	JAN-DEC	JAN-DEC

Human Use Resources

	RARNUM	NAME	CONTACT	CONTACT I NFO
Boat Ramp	2104	Hall's Bayou Ramp at FM 2004		brazoriasanjacbrazos@hallsbayou
Facility	RARNUM	NAME	CONTACT	CONTACT I NFO
	1258	Phillips 66 Pipeline LLC	Mike McGee	877-267-2290
	1283	Ascend Performance Materials Chocolate Bayou Plant	Paul Cartlidge	281-228-4301
Water Intake	RARNUM	NAME	CONTACT	CONTACT I NFO
	4083	JAMES SCOPEL		
	4085	CHOCOLATE BAYOU WATER CO ET AL		
	4086	CHOCOLATE BAYOU WATER CO ET AL		
	4087	MONSANTO COMPANY		