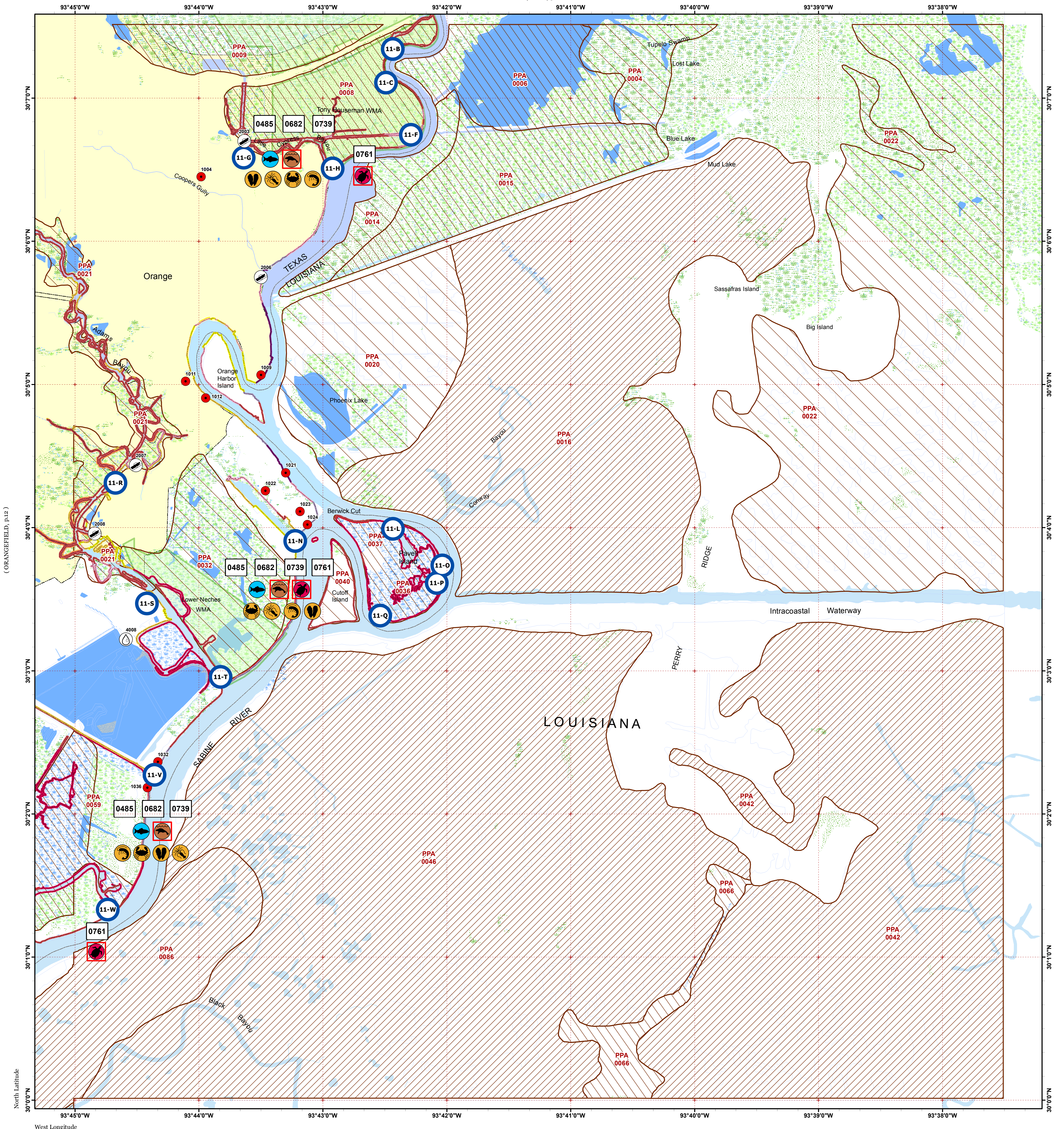


ORANGE

(ECHO, p.6)

[Click Here or Scroll Down for Associated Map Data](#)

Click on the Geographic Response Plan Target to View the ICS Form

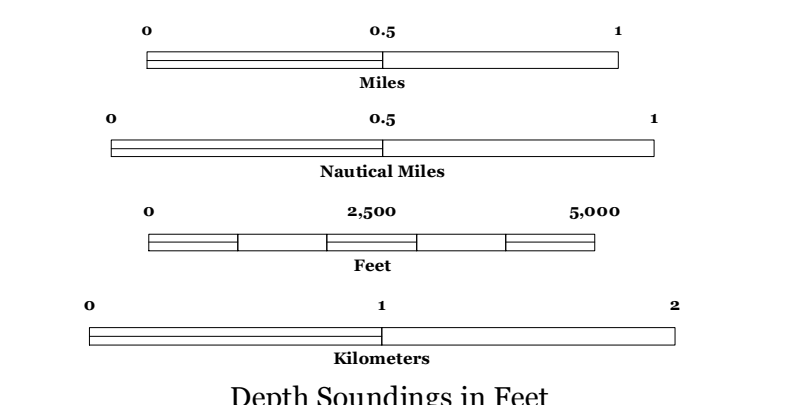
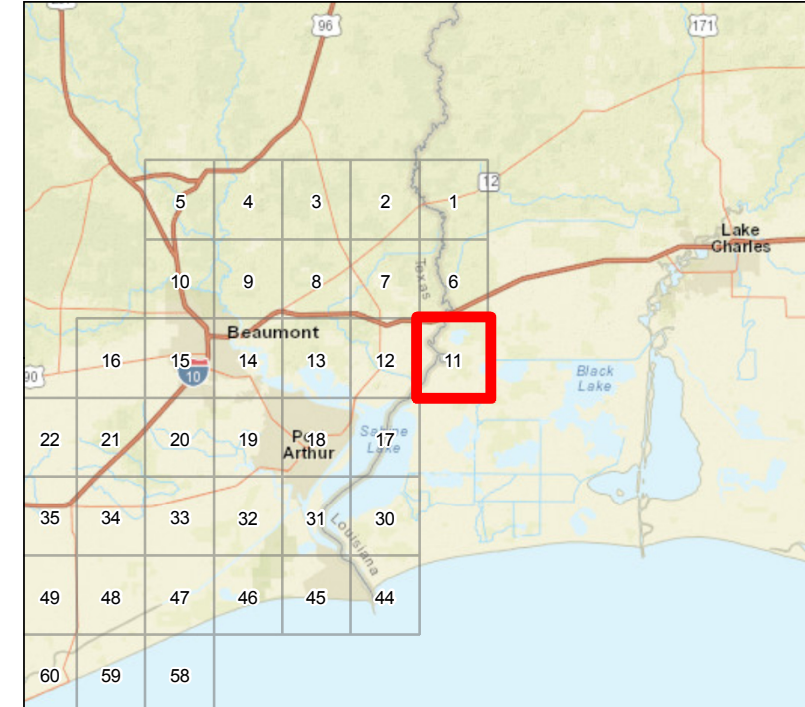


(ORANGEFIELD, p.12)



Oil Spill Planning and Response Atlas
2016

The Texas General Land Office makes no representations or warranties regarding the accuracy or completeness of the information depicted on this map or the data from which it was produced. This map is not suitable for navigational purposes and does not purport to depict boundaries of private and public land.



- ### Human Use Features
- Boat Ramp
 - Facility
 - Water Intake
 - Geographic Response Plan

- ### Map Base Layers
- State Parks/WMA's
 - Bays
 - Salt and Brackish Marshes
 - Exposed Lake Shore
 - Freshwater Marshes
 - Swamps and Flooded Woodlands
 - Willow Thickets
 - Lake / Pond
 - Tidally Influenced River
 - Perennial River
 - Intermittent River
 - County Boundary
 - City Limits

- ### Species Icons Within Map Quad
- Turtle T/E
 - Shrimp
 - Benthic Marine
 - Fish
 - Mammal T/E
 - Bivalve
 - Crab

- ### ENVIRONMENTAL SENSITIVITY INDEX
- 10D Mangroves and Woody Vegetation
 - 10C Freshwater Swamps
 - 10B Freshwater Marshes
 - 10A Salt and Brackish Water Marshes
 - 9 Sheltered Tidal Flats
 - 8C Sheltered Rocky/Karst Shores
 - 8D Sheltered Scarps
 - 8B Sheltered Riprap Structures
 - 8A Sheltered Solid Manmade Structures
 - 7 Exposed Tidal Flats
 - 6B Exposed Riprap Structures
 - 6A Gravel or Shell Beaches
 - 5 Mixed Sand and Gravel or Shell Beaches
 - 4 Coarse-Grained Sand Beaches
 - 3B Scarps and Steep Slopes in Sand
 - 3A Fine-Grained Sand Beaches
 - 2B Wave-Cut Clay Platforms
 - 2A Scarps and Steep Slopes in Clay
 - 1 Exposed Walls and Other Solid Structures

- ### Priority Protection Areas
- HIGH
 - MEDIUM
 - LOW

Quadrant: ORANGE

Map # :11

Biological Information for this quadrant represents known concentration areas of occurrence.

Habitat Priority Protection Areas

PPA ID	PRIORITY	POLY DESCRIPTION	BIRDS RANK	BIRDS DESCRIPTION	FISH RANK	FISH DESCRIPTION	WETLANDS RANK	WETLANDS DESCRIPTION
PPA0004	LOW	Tupelo Swamp-Lost Lake area					HIGH	Cypress-tupelo swamps
PPA0006	MEDIUM	Marsh north of power lines	MEDIUM	Swallow-tailed kite, waterfowl	MEDIUM	Nursery	HIGH	Primarily fresh marsh grading to solid fringe of cypress and tupelo along Sabine River
PPA0008	MEDIUM	North of Little Cypress Bayou	MEDIUM	Swallow-tailed kite	MEDIUM		HIGH	Cypress swamps
PPA0009	MEDIUM	Tony Houseman WMA (Blue Elbow Swamp)	MEDIUM	Wading birds, swallow-tailed kite	MEDIUM		MEDIUM	High quality cypress swamps; continues on Louisiana side
PPA0014	LOW	Marsh east of Sabine River, northeast of Phoenix Lake Oil Field	MEDIUM	Swallow-tailed kite, waterfowl			HIGH	Primarily fresh marsh grading to solid fringe of cypress and tupelo along Sabine River
PPA0015	MEDIUM	Marsh east of Sabine River, northeast of Phoenix Lake Oil Field	MEDIUM	Swallow-tailed kite, waterfowl	LOW	Nursery	HIGH	Primarily fresh marsh grading to solid fringe of cypress and tupelo along Sabine River
PPA0016	HIGH	Conway Bayou drainage, marsh east of Phoenix Lake Oil Field	MEDIUM	Swallow-tailed kite, waterfowl	HIGH	Nursery	HIGH	Primarily fresh marsh grading to solid fringe of cypress and tupelo along Sabine River
PPA0020	LOW	Phoenix Lake Oil Field	MEDIUM	Swallow-tailed kite, waterfowl			HIGH	Primarily fresh marsh grading to solid fringe of cypress and tupelo along Sabine River
PPA0021	LOW	Adams Bayou					HIGH	Cypress swamps, bottomland hardwoods
PPA0022	LOW	Marsh south of Big Island					HIGH	
PPA0032	LOW	Marsh southeast of Cove; unit of Lower Neches WMA					HIGH	Marsh: bulrush, common reed
PPA0036	MEDIUM	Pavell Island	MEDIUM		LOW	Nursery	HIGH	Fresh marsh; marshhay cordgrass, arrowhead
PPA0037	LOW	Canal in north shore of Pavell Island					HIGH	
PPA0040	LOW	Cutoff Island	MEDIUM				HIGH	Fresh marsh; marshhay cordgrass, arrowhead
PPA0042	HIGH	Black Bayou and marsh south of ICW (Louisiana)	HIGH	Scattered rookeries, wading birds, waterfowl, swallow-tailed kite, alligators, formerly red wolf	HIGH	Nursery	HIGH	Primarily brackish marsh; scattered high ridges with oaks
PPA0046	HIGH	Black Bayou and marsh south of ICW (Louisiana)	HIGH	Scattered rookeries, wading birds, waterfowl, swallow-tailed kite, alligators	HIGH	Nursery; commercial shrimping, crabbing, high recreational fishing	HIGH	Brackish to intermediate marsh: marshhay cordgrass, spikerushes, wigeongrass in open water areas
PPA0059	MEDIUM	Lower Cow Bayou marsh	MEDIUM	Wading birds, osprey, rails, alligator	MEDIUM	Nursery	MEDIUM	Marshhay cordgrass
PPA0066	MEDIUM	Cut south of Perry Ridge	HIGH				HIGH	
PPA0086	HIGH	Marsh between Sabine River and Black Bayou; accessible to boats from both	HIGH		MEDIUM	Nursery	MEDIUM	

Biological Resources

Fish

RARNUM	NAME	S	F	T	E	CONC	J	F	M	A	M	J	J	A	S	O	N	D	Spawning	Eggs	Larvae	Juveniles	Adults
0485	Gizzard shad					ABUNDANT	X	X	X	X	X	X	X	X	X	X	X	X	-	-	-	-	JAN-DEC
	Atlantic croaker					HIGHLY-ABUNDANT	X	X	X	X	X	X	X	X	X	X	X	X	-	-	JAN-JUN	JAN-DEC	JAN-DEC
	Bay anchovy					COMMON	X	X	X	X	X	X	X	X	X	X	X	X	MAR-NOV	MAR-NOV	MAR-NOV	JAN-DEC	JAN-DEC
	Black drum					COMMON	X	X	X	X	X	X	X	X	X	X	X	X	-	-	-	JAN-DEC	JAN-DEC
	Bull shark					RARE	X	X	X	X	X	X	X	X	X	X	X	X	-	MAY-AUG	MAY-AUG	APR-NOV	JAN-DEC
	Gafftopsail catfish					ABUNDANT				X	X	X	X	X	X	X			APR-MAY	-	-	APR-OCT	APR-OCT
	Gulf menhaden					ABUNDANT	X	X	X	X	X	X	X	X	X	X	X	X	-	-	-	JAN-DEC	APR-DEC
	Hardhead catfish					ABUNDANT	X	X	X	X	X	X	X	X	X	X	X	X	MAY-AUG	MAY-SEP	MAY-SEP	JUN-SEP	JAN-DEC
	Pinfish					RARE				X	X	X	X	X	X	X			-	-	-	APR-OCT	APR-OCT
	Red drum					COMMON	X	X	X	X	X	X	X	X	X	X	X	X	-	-	-	JAN-DEC	JAN-DEC
	Sand seatrout					COMMON	X	X	X	X	X	X	X	X	X	X	X	X	-	-	-	JAN-DEC	JAN-DEC
	Sheepshead					COMMON	X	X	X	X	X	X	X	X	X	X	X	X	-	-	-	DEC-FEB	JAN-DEC
	Southern flounder					COMMON	X	X	X	X	X	X	X	X	X	X	X	X	-	-	-	JAN-DEC	JAN-DEC
	Spot					HIGHLY-ABUNDANT			X	X	X	X	X	X	X	X	X		-	-	-	MAR-OCT	MAR-NOV
	Spotted seatrout					COMMON	X	X	X	X	X	X	X	X	X	X	X	X	APR-OCT	APR-OCT	APR-OCT	OCT-NOV	JAN-DEC
	Star drum					-	X	X	X	X	X	X	X	X	X	X	X	X	-	-	-	-	-
	Striped mullet					COMMON	X	X	X	X	X	X	X	X	X	X	X	X	-	-	-	JAN-DEC	JAN-DEC
	Tarpon					RARE			X	X	X	X	X	X	X	X	X		-	-	-	MAR-NOV	-
	White mullet					COMMON					X	X	X	X					-	-	-	JUN-SEP	-
	Gulf killifish					COMMON	X	X	X	X	X	X	X	X	X	X	X	X	MAR-SEP	MAR-SEP	MAR-OCT	JAN-DEC	JAN-DEC
	Silver perch					RARE	X	X	X	X	X	X	X	X	X	X	X	X	MAY-SEP	MAY-SEP	MAY-SEP	OCT-NOV	JAN-DEC
	Silversides					COMMON	X	X	X	X	X	X	X	X	X	X	X	X	MAR-AUG	MAR-AUG	MAR-AUG	JAN-DEC	JAN-DEC
	Alligator gar					COMMON	X	X	X	X	X	X	X	X	X	X	X	X	-	-	-	JAN-DEC	JAN-DEC
	Spotted gar					ABUNDANT	X	X	X	X	X	X	X	X	X	X	X	X	APR-MAY	APR-MAY	-	JAN-DEC	JAN-DEC
	Atlantic spadefish					RARE						X	X	X	X				-	-	-	JUL-OCT	-
	Bay whiff					RARE	X	X	X	X	X	X	X	X	X	X	X	X	-	-	-	JUL-AUG	JAN-DEC
	Spotfin mojarra					RARE							X	X					-	-	-	-	-
	Atlantic bumper					RARE							X	X					-	-	-	-	AUG-SEP
	Crevalle jack					COMMON					X	X	X						-	-	-	JUN-AUG	-
	Spanish mackerel					COMMON								X	X				-	-	-	SEP-OCT	SEP-OCT

Invertebrate

RARNUM	NAME	S	F	T	E	CONC	J	F	M	A	M	J	J	A	S	O	N	D	Spawning	Eggs	Larvae	Juveniles	Adults
0682	Atlantic rangia					ABUNDANT	X	X	X	X	X	X	X	X	X	X	X	X	MAR-OCT	-	MAR-OCT	JAN-DEC	JAN-DEC

Invertebrate

RARNUM	NAME	S	F	T	E	CONC	J	F	M	A	M	J	J	A	S	O	N	D	Spawning	Eggs	Larvae	Juveniles	Adults
	Blue crab					ABUNDANT	X	X	X	X	X	X	X	X	X	X	X	X	MAR-NOV	-	MAR-NOV	JAN-DEC	JAN-DEC
	Brown shrimp					ABUNDANT			X	X	X	X	X	X	X	X	X	X	-	-	MAR-APR	APR-DEC	-
	Grass shrimp					COMMON	X	X	X	X	X	X	X	X	X	X	X	X	JAN-DEC	JAN-DEC	JAN-DEC	JAN-DEC	JAN-DEC
	White shrimp					HIGHLY-ABUNDANT	X	X	X	X	X	X	X	X	X	X	X	X	-	-	MAY-JUN	APR-DEC	MAR-JAN

Marine Mammal

RARNUM	NAME	S	F	T	E	CONC	J	F	M	A	M	J	J	A	S	O	N	D	Mating	Calving	Pupping	Molting
0739	West Indian manatee	S/F		E/E		VERY-RARE						X	X	X					-	-	-	-

Reptile

RARNUM	NAME	S	F	T	E	CONC	J	F	M	A	M	J	J	A	S	O	N	D	Nesting	Hatching	Interesting	Juveniles	Adults
0761	Kemp's ridley sea turtle	S/F		E/E		COMMON				X	X	X	X	X	X	X	X	X	-	-	-	APR-NOV	-

Human Use Resources

	RARNUM	NAME	CONTACT	CONTACT INFO
Boat Ramp	2003	Blue Bird Fish Camp		orangesabine@bluebirdfish
	2006	Orange Boat Ramp		
	2007	Burkharts Marina		
	2008	Loitias Landing		orangesabine@loitiaslanding
Facility	1004	American Industrial Minerals, LLC.	Gordon Langston	409-670-0320
	1009	Westport Orange Shipyard, LLC	Phillip Burke	409-291-8914
	1011	Conrad Orange Shipyard, Inc.	Eric Bland	409-883-6666
	1012	Sienna Shipyards, LLC,	Guy Mims	409-454-3610
	1021	Crumpler's Shipbuilding Co., Inc.	Jake Crumpler	337-794-3033
	1022	MPG Pipeline Construction, LLC Equipment yard	Charlie Simon	337-278-2732
	1023	Port of Orange Facility	Dwayne Wright	866-535-6835
	1024	Bludworth Shipyard	Richard Allen	409-543-1219
	1032	DuPont #1 (API 42-361-30889), DuPont #2 (API 42-361-30895)	Larry Hayes	903-520-9078
	1036	INVISTA Dock Facility	David Benoit	409-330-5502
Water Intake	4008	E I DUPONT DE NEMOURS & CO		

1. Incident Name	2. Operational Period (Date/Time)	Assignment List ICS 204-OS
------------------	-----------------------------------	----------------------------

3. Branch	4. Division/Group
-----------	-------------------

5. Operations Personnel	_____
Operations Section Chief	_____
Branch Director	_____
Division/Group Supervisor	_____

6. Resources Assigned This Period "X" Indicates 204a attachment with special instructions

Resource Identifier	Leader	Contact Info #	# of Persons	Reporting Info/Notes/Remarks

7. Assignments

SAFETY NOTE: Shallow at low tide, reptiles in area, no road access.

8. Site Number: 11-B	9. Quad Name Orange	10. NOAA Chart # 11342	11. GLO Atlas Page # 11	12. County Orange
-------------------------	------------------------	---------------------------	----------------------------	----------------------

13. Site Information: 11-B Site 11-B is two small inlets located on the Texas side of the Sabine River approximately 0.75 miles South of the IH10 bridge. The inlet meanders Northeast for a short distance and then continues on to where IH10 crosses the Sabine River.	14. Latitude From: N 30° 07' 19"	To:
	15. Longitude From: W 093° 42' 28"	To:

16. Closest Boat Ramp IH - 10 Boat Ramp	17. Distance From Ramp 0.75 Miles	18. Boat Type Flat Bottom Boat
--	--------------------------------------	-----------------------------------

19. Directions From Local Sector From MSU go north 0.4 miles on Hwy 69 service road to u-turn @ Hwy 365. Travel south on Hwy 69 for 3.1 miles to the clover leaf to Hwy 73 east & travel 4.7 miles & then merge onto Hwy 73/87. Continue 8.7 miles to Hwy 62 in Bridge City & turn left on Hwy 62. Travel 4.4 miles to IH10 east & turn right. Travel 7.1 miles to Exit 880 & arrive at ramp.	20. Closest Airport Orange County
	21. Closest Helo Spot Orange County

22. Trustee/Contact Numbers USCG: (409) 723-6509 RRC: (713)869-5001 USCG DUTY: (409) 719-1597 TPWD: (409)892-8666 TGLO: (800) 832-8224 NRDA: (512) 463 -9309 TCEQ: (409)781-9330 USFWS: (281) 286-8282	23. Resources at Risk Atlas Priority Medium Environmental Habitat for waterfowl, alligators, Cypress/Tupelo Swamp. Economic N/A	24. Width of inlet North Inlet 435' South Inlet 210' in ft. 25. Water depth in ft. 7' 26. Current Medium 27. No. of Personnel 4
--	--	--

25. Booming Strategy Recommendation
Boom should be configured in an exclusion pattern as to prevent oil from entering cuts. Bring sufficient anchors and rope to accomplish task.

AERIAL PHOTO



ON SITE PHOTO



29. Prepared By:	30. Reviewed by (PSC)	31. Reviewed by (OSC):
Assignment List	ICS 204 OS (Geographic Response Plan)	Project Updated:

"Response strategies may need to be modified to account for changes due to seasonality, weather conditions, spill characteristics, tides and any other considerations."

1. Incident Name	2. Operational Period (Date/Time)	Assignment List ICS 204-OS
------------------	-----------------------------------	----------------------------

3. Branch	4. Division/Group
-----------	-------------------

5. Operations Personnel	_____
Operations Section Chief	_____
Branch Director	_____
Division/Group Supervisor	_____

6. Resources Assigned This Period					"X" Indicates 204a attachment with special instructions
Resource Identifier	Leader	Contact Info #	# of Persons	Reporting Info/Notes/Remarks	

7. Assignments

SAFETY NOTE: Shallow at low tide, reptiles in area, no road access.

8. Site Number: 11-C	9. Quad Name Orange	10. NOAA Chart # 11342	11. GLO Atlas Page # 11	12. County Orange
-------------------------	------------------------	---------------------------	----------------------------	----------------------

13. Site Information: 11-C Site 11-C is a very small inlet located in the Texas side of the Sabine River. This site is just South of a sharp bend in the River approximately 0.75 miles South of IH10. Bluebird Fish Camp is a good staging area and is located close to this site.	14. Latitude From: N 30° 07' 7.94	To:	15. Longitude From: W 093° 42' 26.91	To:
---	---	-----	--	-----

16. Closest Boat Ramp Blue Bird Fish Camp	17. Distance From Ramp 0.75 Miles	18. Boat Type Flat Bottom Boat
--	--------------------------------------	-----------------------------------

19. Directions From Local Sector From MSU go north 0.4 miles on Hwy 69 service road to u-turn @ Hwy 365. Travel south on Hwy 69 for 3.1 miles to the clover leaf to Hwy 73 east & travel 4.7 miles & then merge onto Hwy 73/87. Travel 14.4 miles to Business 90/Green Ave. & continue straight on 90 for 1.1 miles & then turn left onto Simmons Dr. Travel 1.1 miles to Farragut Ave. & turn right into Bluebird Marina.	20. Closest Airport Orange County	21. Closest Helo Spot Orange County
---	--------------------------------------	--

22. Trustee/Contact Numbers USCG: (409) 723-6509 RRC: (713)869-5001 USCG DUTY: (409) 719-1597 TPWD: (409)892-8666 TGLO: (800) 832-8224 NRDA: (512) 463 -9309 TCEQ: (409)781-9330 USFWS: (281) 286-8282	23. Resources at Risk Atlas Priority Medium Environmental Habitat for waterfowl, alligators, Cypress/Tupelo Swamp. Economic N/A	24. Width of inlet 30' in ft. 25. Water depth in ft. 4' 26. Current Medium 27. No. of Personnel 4
--	--	--

25. Booming Strategy Recommendation Boom should be configured in an exclusion pattern as to prevent oil from entering the cut. Bring sufficient anchors and rope to accomplish task.



29. Prepared By:	30. Reviewed by (PSC)	31. Reviewed by (OSC):
Assignment List	ICS 204 OS (Geographic Response Plan)	Project Updated:

"Response strategies may need to be modified to account for changes due to seasonality, weather conditions, spill characteristics, tides and any other considerations."

1. Incident Name	2. Operational Period (Date/Time)	Assignment List ICS 204-OS
------------------	-----------------------------------	----------------------------

3. Branch	4. Division/Group
-----------	-------------------

5. Operations Personnel	Operations Section Chief _____
Branch Director	_____
Division/Group Supervisor	_____

6. Resources Assigned This Period					"X" Indicates 204a attachment with special instructions
Resource Identifier	Leader	Contact Info #	# of Persons	Reporting Info/Notes/Remarks	

7. Assignments

SAFETY NOTE: Shallow at low tide, reptiles in area, no road access.

8. Site Number: 11-F	9. Quad Name Orange	10. NOAA Chart # 11342	11. GLO Atlas Page # 11	12. County Orange
-------------------------	------------------------	---------------------------	----------------------------	----------------------

13. Site Information: 11-F Site 11-F is the power-line canal, which intersects the Sabine River approximately 1.5 miles south of IH10. The site leads to Little Cypress bayou and the Tony Housman WMA. The canal would need to be boomed on both the East and West banks of the River. This site is easily recognized by the power-lines that run directly overhead and the concrete pilings and support structures that are in the water. Port Of Orange (409) 883-4363. American Industrial Minerals, LLC (409)-670-0320. Signal International Shipyard (409) 291-5321.	14. Latitude From: N 30° 06' 45"	To:	15. Longitude From: W 093° 42' 13"	To:
--	--	-----	--	-----

16. Closest Boat Ramp Blue Bird Boat Ramp	17. Distance From Ramp 1.5 Miles	18. Boat Type Flat Bottom Boat
--	-------------------------------------	-----------------------------------

19. Directions From Local Sector From MSU go north 0.4 miles on Hwy 69 service road to u-turn @ Hwy 365. Travel south on Hwy 69 for 3.1 miles to the clover leaf to Hwy 73 east & travel 4.7 miles & then merge onto Hwy 73/87. Travel 14.4 miles to Business 90/Green Ave. & continue straight on 90 for 1.1 miles & then turn left onto Simmons Dr. Travel 1.1 miles to Farragut Ave. & turn right into Bluebird Marina.	20. Closest Airport Orange County	21. Closest Helo Spot Orange County
---	--------------------------------------	--

22. Trustee/Contact Numbers USCG: (409) 723-6509 RRC: (713)869-5001 USCG DUTY: (409) 719-1597 TPWD: (409)892-8666 TGLO: (800) 832-8224 NRDA: (512) 463 -9309 TCEQ: (409)781-9330 USFWS: (281) 286-8282	23. Resources at Risk Atlas Priority Medium Environmental Habitat for waterfowl, alligators, Cypress/Tupelo Swamp. Economic N/A	24. Width of inlet 350' in ft. 25. Water depth in ft. 4' 26. Current Medium 27. No. of Personnel 4
--	--	---

25. Booming Strategy Recommendation Boom should be configured in an exclusion and deflection pattern as to prevent oil from entering cuts. Bring sufficient anchors and rope to accomplish task.



29. Prepared By:	30. Reviewed by (PSC)	31. Reviewed by (OSC):
Assignment List	ICS 204 OS (Geographic Response Plan)	Project Updated:

"Response strategies may need to be modified to account for changes due to seasonality, weather conditions, spill characteristics, tides and any other considerations."

1. Incident Name	2. Operational Period (Date/Time)	Assignment List ICS 204-OS
------------------	-----------------------------------	----------------------------

3. Branch	4. Division/Group
-----------	-------------------

5. Operations Personnel	_____
Operations Section Chief	_____
Branch Director	_____
Division/Group Supervisor	_____

6. Resources Assigned This Period "X" Indicates 204a attachment with special instructions

Resource Identifier	Leader	Contact Info #	# of Persons	Reporting Info/Notes/Remarks

7. Assignments

SAFETY NOTE: Shallow near banks with submerged objects, reptiles in area.

8. Site Number: 11-G	9. Quad Name Orange	10. NOAA Chart # 11342	11. GLO Atlas Page # 11	12. County Orange
-------------------------	------------------------	---------------------------	----------------------------	----------------------

13. Site Information: 11-G Site 11-G is Bluebird Fish Camp. This site is a good staging area with road access and a boat launch. The channel, Little Cypress Bayou (11-H), leading from the launch to the Sabine River is only about 10-12 feet wide. Main channel that leads to Site 6 should be used to deploy equipment. City of Orange Fire Dept. (409) 883-8533. Port Of Orange (409) 883-4363. American Industrial Minerals, LLC (409)-670-0320.	14. Latitude From: N 30° 06' 42"	To:	
	15. Longitude From: W 093° 43' 36"	To:	

16. Closest Boat Ramp Blue Bird Boat Ramp	17. Distance From Ramp On Site	18. Boat Type Flat Bottom Boat
--	-----------------------------------	-----------------------------------

19. Directions From Local Sector From MSU go north 0.4 miles on Hwy 69 service road to u-turn @ Hwy 365. Travel south on Hwy 69 for 3.1 miles to the clover leaf to Hwy 73 east & travel 4.7 miles & then merge onto Hwy 73/87. Travel 14.4 miles to Business 90/Green Ave. & continue straight on 90 for 1.1 miles & then turn left onto Simmons Dr. Travel 1.1 miles to Farragut Ave. & turn right into Bluebird Marina.	20. Closest Airport Orange County	21. Closest Helo Spot Orange County
---	--------------------------------------	--

22. Trustee/Contact Numbers USCG: (409) 723-6509 RRC: (713)869-5001 USCG DUTY: (409) 719-1597 TPWD: (409)892-8666 TGLO: (800) 832-8224 NRDA: (512) 463 -9309 TCEQ: (409)781-9330 USFWS: (281) 286-8282	23. Resources at Risk Atlas Priority Medium Environmental Cypress/Tupelo swamp habitat Economic N/A	24. Width of inlet 260 in ft. 25. Water depth in ft. 6-12' 26. Current Slow 27. No. of Personnel 4
--	--	---

25. Booming Strategy Recommendation
Site 11-G is primarily designated as a staging area and boat launch for a number of the sites on the Sabine River. Booming at the 3 distinctive cuts at this location should be configured in an exclusion pattern as to prevent oil from entering cuts Bring sufficient anchors and rope to accomplish task.



29. Prepared By:	30. Reviewed by (PSC)	31. Reviewed by (OSC):
Assignment List	ICS 204 OS (Geographic Response Plan)	Project Updated:

"Response strategies may need to be modified to account for changes due to seasonality, weather conditions, spill characteristics, tides and any other considerations."

1. Incident Name	2. Operational Period (Date/Time)	Assignment List ICS 204-OS
------------------	-----------------------------------	----------------------------

3. Branch	4. Division/Group
-----------	-------------------

5. Operations Personnel	
Operations Section Chief	_____
Branch Director	_____
Division/Group Supervisor	_____

6. Resources Assigned This Period "X" Indicates 204a attachment with special instructions

Resource Identifier	Leader	Contact Info #	# of Persons	Reporting Info/Notes/Remarks

7. Assignments

SAFETY NOTE: Shallow at low tide, reptiles in area.

8. Site Number: 11-H	9. Quad Name Orange	10. NOAA Chart # 11342	11. GLO Atlas Page # 11	12. County Orange
-------------------------	------------------------	---------------------------	----------------------------	----------------------

13. Site Information: 11-H Site 11-H is Little Cypress Bayou, which is located on the Texas side of the Sabine River approximately 0.75 miles south east of Bluebird Fish Camp. This area could provide a good staging area. Little Cypress Bayou leads into the power-line canal (Site 11-F) and then to Bluebird Fish Camp. Bluebird Fish Camp is a good staging area (See Site 1-G). Little Cypress Bayou curves North at Bluebird Fish Camp and then flows under IH10. Signal International Shipyard (409) 291-5321. Port Of Orange (409) 883-4363. American Industrial Minerals, LLC (409)-670-0320.	14. Latitude From: N 30° 06' 30.19	To:	15. Longitude From: W 093° 42' 54.9	To:
---	--	-----	---	-----

16. Closest Boat Ramp Blue Bird Boat Ramp	17. Distance From Ramp 0.75 Miles	18. Boat Type Flat Bottom Boat
--	--------------------------------------	-----------------------------------

19. Directions From Local Sector From MSU go north 0.4 miles on Hwy 69 service road to u-turn @ Hwy 365. Travel south on Hwy 69 for 3.1 miles to the clover leaf to Hwy 73 east & travel 4.7 miles & then merge onto Hwy 73/87. Travel 14.4 miles to Business 90/Green Ave. & continue straight on 90 for 1.1 miles & then turn left onto Simmons Dr. Travel 1.1 miles to Farragut Ave. & turn right into Bluebird Marina	20. Closest Airport Orange County	21. Closest Helo Spot Orange County
--	--------------------------------------	--

22. Trustee/Contact Numbers USCG: (409) 723-6509 RRC: (713)869-5001 USCG DUTY: (409) 719-1597 TPWD: (409)892-8666 TGLO: (800) 832-8224 NRDA: (512) 463 -9309 TCEQ: (409)781-9330 USFWS: (281) 286-8282	23. Resources at Risk Atlas Priority Medium Environmental Habitat for waterfowl, alligators, Cypress/Tupelo Swamp. Economic Residential	24. Width of inlet 200' in ft. 25. Water depth in ft. 17' 26. Current Medium 27. No. of Personnel 4
--	--	--

25. Booming Strategy Recommendation
 Boom should be configured in an exclusion pattern as to prevent oil from entering cut. Bring sufficient anchors and rope to accomplish task.



29. Prepared By:	30. Reviewed by (PSC)	31. Reviewed by (OSC):
Assignment List	ICS 204 OS (Geographic Response Plan)	Project Updated:

"Response strategies may need to be modified to account for changes due to seasonality, weather conditions, spill characteristics, tides and any other considerations."

1. Incident Name	2. Operational Period (Date/Time)	Assignment List ICS 204-OS
------------------	-----------------------------------	----------------------------

3. Branch	4. Division/Group
-----------	-------------------

5. Operations Personnel	
Operations Section Chief	_____
Branch Director	_____
Division/Group Supervisor	_____

6. Resources Assigned This Period "X" Indicates 204a attachment with special instructions

Resource Identifier	Leader	Contact Info #	# of Persons	Reporting Info/Notes/Remarks

7. Assignments

SAFETY NOTE: There are submerged metal boat hulls that are not usually visible within Berwick Cut area. Caution should be used when operating a boat in this area.

8. Site Number: 11-L	9. Quad Name Orange	10. NOAA Chart # 11342	11. GLO Atlas Page # 11	12. County Orange
-------------------------	------------------------	---------------------------	----------------------------	----------------------

13. Site Information: 11-L Site 11-L is the four primary cuts that feed into Pavell Island, which is located on the Texas side of the Sabine River. The point where the River flows around Pavell Island is referred to as Berwick Cut. The four inlets that lead into this Island need consideration. Pavell Island consists of intermediate marsh and is habitat for several sensitive species of flora and fauna. One large inlet is approximately 0.5 of a mile down from the opening of Berwick Cut. The next two cuts are between the opening of Conway Bayou and the ICWW. One smaller cut is near Cutoff Island, LA. All of these cuts would need to be considered during a spill response. None of these cuts exceed 100 feet wide at a 45° angle. Port Of Orange (409) 883-4363. Bludworth Shipyard (832) 472-0295. Crumplers Shipbuilding, Inc. (409) 886-7934.	14. Latitude From: 30° 03' 39"	To:		15. Longitude From: 093° 42' 22"	To:
--	--	-----	--	--	-----

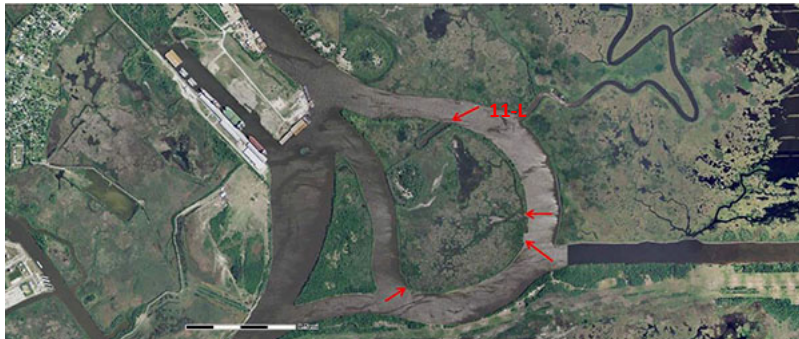
16. Closest Boat Ramp Muddy Water Boat Ramp	17. Distance From Ramp 3.5 Miles	18. Boat Type Flat Bottom Boat
--	-------------------------------------	-----------------------------------

19. Directions From Local Sector From MSU go north 0.4 miles on Hwy 69 service road to u-turn @ Hwy 365. Travel south on Hwy 69 for 3.1 miles to the clover leaf to Hwy 73 east & travel 4.7 miles & then merge onto Hwy 73/87. Continue 10 miles on Hwy 73/87 through Bridge City & turn right on Plant Road/1006. Travel 4.0 miles to Muddy Water Marina on the right.	20. Closest Airport Orange County 21. Closest Helo Spot Orange County
---	--

22. Trustee/Contact Numbers USCG: (409) 723-6509 RRC: (713)869-5001 USCG DUTY: (409) 719-1597 TPWD: (409)892-8666 TGLO: (800) 832-8224 NRDA: (512) 463 -9309 TCEQ: (409)781-9330 USFWS: (281) 286-8282	23. Resources at Risk Atlas Priority Medium Environmental Birds, threatened raptors, intermediate marsh Economic Commercial traffic on ICWW, In	24. Width of inlet clockwise from top are: 1. 100', 2. 100', 3. 30', 4. 22' in ft. 25. Water depth in ft. 5' ft. 26. Current Medium 27. No. of Personnel 4
--	---	--

25. Booming Strategy Recommendation
 Boom should be configured in an exclusion and deflection pattern as to prevent oil from entering cuts. Bring sufficient anchors and rope to accomplish task.

AERIAL PHOTO



ON SITE PHOTO



29. Prepared By:	30. Reviewed by (PSC)	31. Reviewed by (OSC):
Assignment List	ICS 204 OS (Geographic Response Plan)	Project Updated:

"Response strategies may need to be modified to account for changes due to seasonality, weather conditions, spill characteristics, tides and any other considerations."

1. Incident Name	2. Operational Period (Date/Time)	Assignment List ICS 204-OS
------------------	-----------------------------------	----------------------------

3. Branch	4. Division/Group
-----------	-------------------

5. Operations Personnel	
Operations Section Chief	_____
Branch Director	_____
Division/Group Supervisor	_____

6. Resources Assigned This Period						"X" Indicates 204a attachment with special instructions
Resource Identifier	Leader	Contact Info #	# of Persons	Reporting Info/Notes/Remarks		

7. Assignments

SAFETY NOTE: Shallow at low tide in Northern area of Port of Orange, reptiles in area.

8. Site Number: 11-N	9. Quad Name Orange	10. NOAA Chart # 11342	11. GLO Atlas Page # 11	12. County Orange
-------------------------	------------------------	---------------------------	----------------------------	----------------------

13. Site Information: 11-N Site 11-N is the Port of Orange. The Port could be a staging area for a response and has good access for vacuum trucks to pick up oil. Be advised that there is a small tidal inlet located at the Northwest end of the Port. This tidal inlet feeds a small marsh area located to the West that is inside the Lower Neches WMA. This tidal inlet would need to be protected if oil enters this area. Port Of Orange (409) 883-4363. Bludworth Shipyard (832) 472-0295.	14. Latitude From: 30° 03' 54"	To:	
	15. Longitude From: 093° 43' 12"	To:	

16. Closest Boat Ramp Orange City Boat Ramp	17. Distance From Ramp 2.5 Miles	18. Boat Type Flat Bottom Boat
--	-------------------------------------	-----------------------------------

19. Directions From Local Sector From MSU go north 0.4 miles on Hwy 69 service road to u-turn @ Hwy 365. Travel south on Hwy 69 for 3.1 miles to the clover leaf to Hwy 73 east & travel 4.7 miles & then merge onto Hwy 73/87. Travel 14.4 miles to Business 90/Green Ave. & continue straight on 90 for 1.1 miles & turn left onto Simmons Dr. Travel 0.4 miles & turn right on W. Harry Reed Ave. & travel 0.2 miles, then take a right turn into the City of Orange boat ramp complex.	20. Closest Airport Orange County	21. Closest Helo Spot Orange County
---	--------------------------------------	--

22. Trustee/Contact Numbers	23. Resources at Risk	24. Width of inlet 210' ft in ft.
USCG: (409) 723-6509 RRC: (713)869-5001	Atlas Priority Low	25. Water depth in ft. 29' ft
USCG DUTY: (409) 719-1597 TPWD: (409)892-8666	Environmental Intermediate marsh, Waterfowl, alligators.	26. Current Slow
TGLO: (800) 832-8224 NRDA: (512) 463 -9309	Economic Port of Orange, Bludworth Shipy	27. No. of Personnel 4
TCEQ: (409)781-9330 USFWS: (281) 286-8282		

25. Booming Strategy Recommendation Boom should be configured in an exclusion pattern as to prevent oil from entering cuts. Bring sufficient anchors and rope to accomplish task.
--

AERIAL PHOTO

ON SITE PHOTO



29. Prepared By:	30. Reviewed by (PSC)	31. Reviewed by (OSC):
Assignment List	ICS 204 OS (Geographic Response Plan)	Project Updated:

"Response strategies may need to be modified to account for changes due to seasonality, weather conditions, spill characteristics, tides and any other considerations."

1. Incident Name	2. Operational Period (Date/Time)	Assignment List ICS 204-OS
------------------	-----------------------------------	----------------------------

3. Branch	4. Division/Group
-----------	-------------------

5. Operations Personnel Operations Section Chief _____ Branch Director _____ Division/Group Supervisor _____	
---	--

6. Resources Assigned This Period						"X" Indicates 204a attachment with special instructions
Resource Identifier	Leader	Contact Info #	# of Persons	Reporting Info/Notes/Remarks		

7. Assignments

SAFETY NOTE: There are submerged metal boat hulls that are not usually visible within Berwick Cut area. Caution should be used when operating a boat in this area.

8. Site Number: 11-O	9. Quad Name Orange	10. NOAA Chart # 11342	11. GLO Atlas Page # 11	12. County Orange
-------------------------	------------------------	---------------------------	----------------------------	----------------------

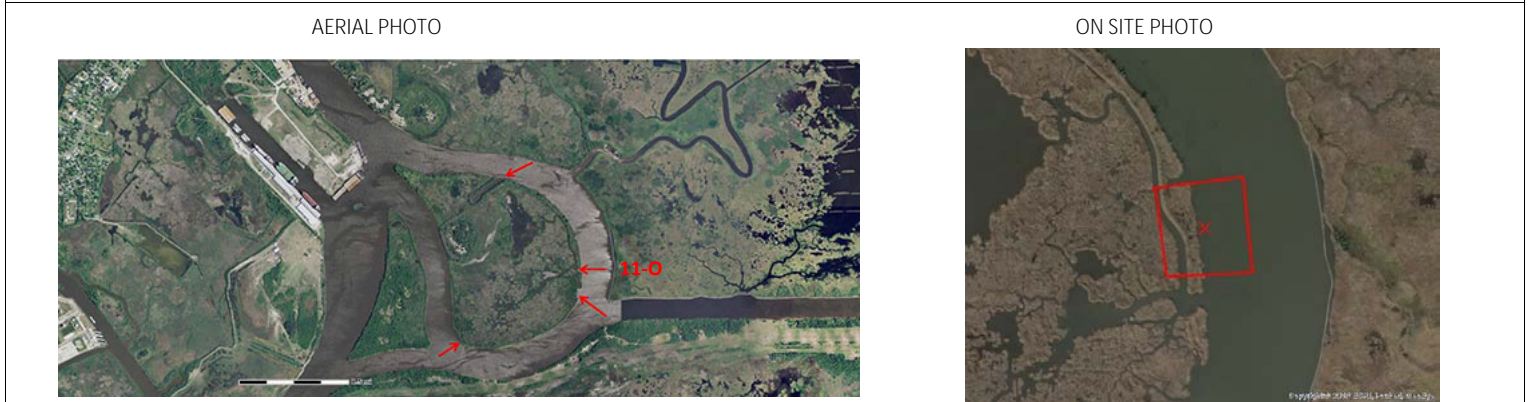
13. Site Information: 11-O Site 11-O is the four primary cuts that feed into Pavell Island, which is located on the Texas side of the Sabine River. The point where the River flows around Pavell Island is referred to as Berwick Cut. The four inlets that lead into this Island need consideration. Pavell Island consists of intermediate marsh and is habitat for several sensitive species of flora and fauna. One large inlet is approximately 0.5 of a mile down from the opening of Berwick Cut. The next two cuts are between the opening of Conway Bayou and the ICWW. One smaller cut is near Cutoff Island, LA. All of these cuts would need to be considered during a spill response. None of these cuts exceed 100 feet wide at a 45° angle. Port Of Orange (409) 883-4363. Bludworth Shipyard (832) 472-0295. Crumplers Shipbuilding, Inc. (409) 886-7934.	14. Latitude From: 30° 03' 39"	To:		15. Longitude From: 093° 42' 22"	To:
--	--	-----	--	--	-----

16. Closest Boat Ramp Muddy Water Boat Ramp	17. Distance From Ramp 3.5 Miles	18. Boat Type Flat Bottom Boat
--	-------------------------------------	-----------------------------------

19. Directions From Local Sector From MSU go north 0.4 miles on Hwy 69 service road to u-turn @ Hwy 365. Travel south on Hwy 69 for 3.1 miles to the clover leaf to Hwy 73 east & travel 4.7 miles & then merge onto Hwy 73/87. Continue 10 miles on Hwy 73/87 through Bridge City & turn right on Plant Road/1006. Travel 4.0 miles to Muddy Water Marina on the right.	20. Closest Airport Orange County
	21. Closest Helo Spot Orange County

22. Trustee/Contact Numbers USCG: (409) 723-6509 RRC: (713)869-5001 USCG DUTY: (409) 719-1597 TPWD: (409)892-8666 TGLO: (800) 832-8224 NRDA: (512) 463 -9309 TCEQ: (409)781-9330 USFWS: (281) 286-8282	23. Resources at Risk Atlas Priority Medium Environmental Birds, threatened raptors, intermediate marsh Economic Commercial traffic on ICWW, In	24. Width of inlet clockwise from top are: 1. 100', 2. 100', 3. 30', 4. 22' 25. Water depth in ft. 5' ft. 26. Current Medium 27. No. of Personnel 4
--	---	---

25. Booming Strategy Recommendation Boom should be configured in an exclusion and deflection pattern as to prevent oil from entering cuts. Bring sufficient anchors and rope to accomplish task.



29. Prepared By:	30. Reviewed by (PSC)	31. Reviewed by (OSC):
Assignment List	ICS 204 OS (Geographic Response Plan)	Project Updated:

"Response strategies may need to be modified to account for changes due to seasonality, weather conditions, spill characteristics, tides and any other considerations."

1. Incident Name	2. Operational Period (Date/Time)	Assignment List ICS 204-OS
------------------	-----------------------------------	----------------------------

3. Branch	4. Division/Group
-----------	-------------------

5. Operations Personnel	
Operations Section Chief	_____
Branch Director	_____
Division/Group Supervisor	_____

6. Resources Assigned This Period "X" Indicates 204a attachment with special instructions

Resource Identifier	Leader	Contact Info #	# of Persons	Reporting Info/Notes/Remarks

7. Assignments

SAFETY NOTE: There are submerged metal boat hulls that are not usually visible within Berwick Cut area. Caution should be used when operating a boat in this area.

8. Site Number: 11-P	9. Quad Name Orange	10. NOAA Chart # 11342	11. GLO Atlas Page # 11	12. County Orange
-------------------------	------------------------	---------------------------	----------------------------	----------------------

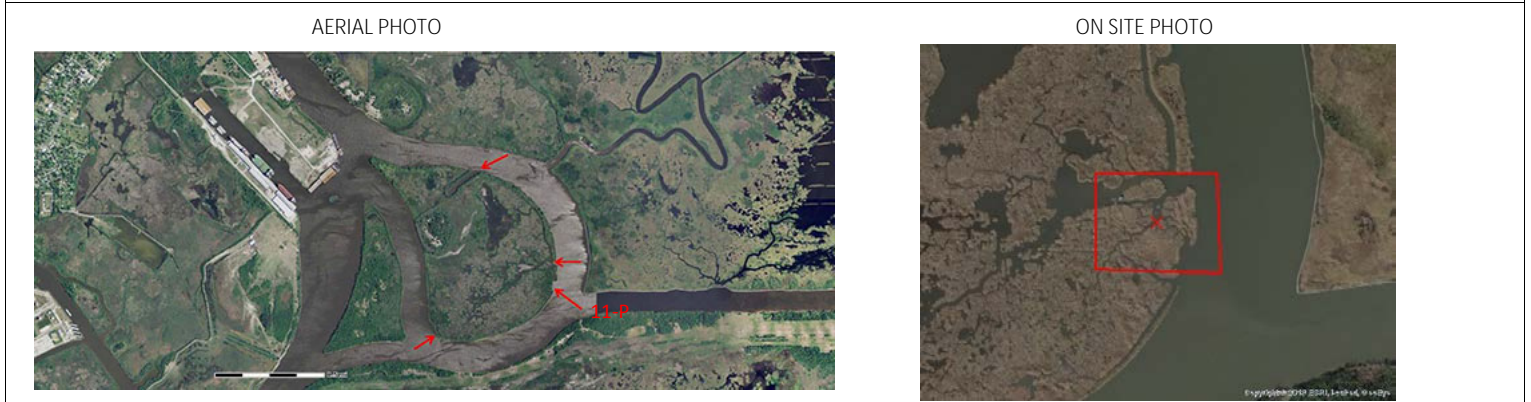
13. Site Information: 11-P Site 11-P is the four primary cuts that feed into Pavell Island, which is located on the Texas side of the Sabine River. The point where the River flows around Pavell Island is referred to as Berwick Cut. The four inlets that lead into this Island need consideration. Pavell Island consists of intermediate marsh and is habitat for several sensitive species of flora and fauna. One large inlet is approximately 0.5 of a mile down from the opening of Berwick Cut. The next two cuts are between the opening of Conway Bayou and the ICWW. One smaller cut is near Cutoff Island, LA. All of these cuts would need to be considered during a spill response. None of these cuts exceed 100 feet wide at a 45° angle. Port Of Orange (409) 883-4363. Bludworth Shipyard (832) 472-0295. Crumplers Shipbuilding, Inc. (409) 886-7934.	14. Latitude From: 30° 03' 39"	To:		15. Longitude From: 093° 42' 22"	To:
--	--	-----	--	--	-----

16. Closest Boat Ramp Muddy Water Boat Ramp	17. Distance From Ramp 3.5 Miles	18. Boat Type Flat Bottom Boat
--	-------------------------------------	-----------------------------------

19. Directions From Local Sector From MSU go north 0.4 miles on Hwy 69 service road to u-turn @ Hwy 365. Travel south on Hwy 69 for 3.1 miles to the clover leaf to Hwy 73 east & travel 4.7 miles & then merge onto Hwy 73/87. Continue 10 miles on Hwy 73/87 through Bridge City & turn right on Plant Road/1006. Travel 4.0 miles to Muddy Water Marina on the right.	20. Closest Airport Orange County 21. Closest Helo Spot Orange County
---	--

22. Trustee/Contact Numbers USCG: (409) 723-6509 RRC: (713)869-5001 USCG DUTY: (409) 719-1597 TPWD: (409)892-8666 TGLO: (800) 832-8224 NRDA: (512) 463 -9309 TCEQ: (409)781-9330 USFWS: (281) 286-8282	23. Resources at Risk Atlas Priority Medium Environmental Birds, threatened raptors, intermediate marsh Economic Commercial traffic on ICWW, In	24. Width of inlet clockwise from top are: 1. 100', 2. 100', 3. 30', 4. 22' in ft. 25. Water depth in ft. 5' ft. 26. Current Medium 27. No. of Personnel 4
--	---	--

25. Booming Strategy Recommendation Boom should be configured in an exclusion and deflection pattern as to prevent oil from entering cuts. Bring sufficient anchors and rope to accomplish task.



29. Prepared By:	30. Reviewed by (PSC)	31. Reviewed by (OSC):
Assignment List	ICS 204 OS (Geographic Response Plan)	Project Updated:

"Response strategies may need to be modified to account for changes due to seasonality, weather conditions, spill characteristics, tides and any other considerations."

1. Incident Name	2. Operational Period (Date/Time)	Assignment List ICS 204-OS
------------------	-----------------------------------	----------------------------

3. Branch	4. Division/Group
-----------	-------------------

5. Operations Personnel	
Operations Section Chief	_____
Branch Director	_____
Division/Group Supervisor	_____

6. Resources Assigned This Period						"X" Indicates 204a attachment with special instructions
Resource Identifier	Leader	Contact Info #	# of Persons	Reporting Info/Notes/Remarks		

7. Assignments

SAFETY NOTE: There are submerged metal boat hulls that are not usually visible within Berwick Cut area. Caution should be used when operating a boat in this area.

8. Site Number: 11-Q	9. Quad Name Orange	10. NOAA Chart # 11342	11. GLO Atlas Page # 11	12. County Orange
-------------------------	------------------------	---------------------------	----------------------------	----------------------

13. Site Information: 11-Q Site 11-Q is the four primary cuts that feed into Pavell Island, which is located on the Texas side of the Sabine River. The point where the River flows around Pavell Island is referred to as Berwick Cut. The four inlets that lead into this Island need consideration. Pavell Island consists of intermediate marsh and is habitat for several sensitive species of flora and fauna. One large inlet is approximately 0.5 of a mile down from the opening of Berwick Cut. The next two cuts are between the opening of Conway Bayou and the ICWW. One smaller cut is near Cutoff Island, LA. All of these cuts would need to be considered during a spill response. None of these cuts exceed 100 feet wide at a 45° angle. Port Of Orange (409) 883-4363. Bludworth Shipyard (832) 472-0295. Crumplers Shipbuilding, Inc. (409) 886-7934.	14. Latitude From: 30° 03' 39"	To:	
	15. Longitude From: 093° 42' 22"	To:	

16. Closest Boat Ramp Muddy Water Boat Ramp	17. Distance From Ramp 3.5 Miles	18. Boat Type Flat Bottom Boat
--	-------------------------------------	-----------------------------------

19. Directions From Local Sector From MSU go north 0.4 miles on Hwy 69 service road to u-turn @ Hwy 365. Travel south on Hwy 69 for 3.1 miles to the clover leaf to Hwy 73 east & travel 4.7 miles & then merge onto Hwy 73/87. Continue 10 miles on Hwy 73/87 through Bridge City & turn right on Plant Road/1006. Travel 4.0 miles to Muddy Water Marina on the right.	20. Closest Airport Orange County
	21. Closest Helo Spot Orange County

22. Trustee/Contact Numbers USCG: (409) 723-6509 RRC: (713)869-5001 USCG DUTY: (409) 719-1597 TPWD: (409)892-8666 TGLO: (800) 832-8224 NRDA: (512) 463 -9309 TCEQ: (409)781-9330 USFWS: (281) 286-8282	23. Resources at Risk Atlas Priority Medium Environmental Birds, threatened raptors, intermediate marsh Economic Commercial traffic on ICWW, In	24. Width of inlet clockwise from top are: 1. 100', 2. 100', 3. 30', 4. 22' in ft. 25. Water depth in ft. 5' ft. 26. Current Medium 27. No. of Personnel 4
--	---	--

25. Booming Strategy Recommendation Boom should be configured in an exclusion and deflection pattern as to prevent oil from entering cuts. Bring sufficient anchors and rope to accomplish task.



29. Prepared By:	30. Reviewed by (PSC)	31. Reviewed by (OSC):
Assignment List	ICS 204 OS (Geographic Response Plan)	Project Updated:

"Response strategies may need to be modified to account for changes due to seasonality, weather conditions, spill characteristics, tides and any other considerations."

1. Incident Name	2. Operational Period (Date/Time)	Assignment List ICS 204-OS
------------------	-----------------------------------	----------------------------

3. Branch	4. Division/Group
-----------	-------------------

5. Operations Personnel	
Operations Section Chief	_____
Branch Director	_____
Division/Group Supervisor	_____

6. Resources Assigned This Period "X" Indicates 204a attachment with special instructions

Resource Identifier	Leader	Contact Info #	# of Persons	Reporting Info/Notes/Remarks

7. Assignments

SAFETY NOTE: Shallow, submerged stumps and logs, reptiles in the area.

8. Site Number: 11-R	9. Quad Name Orange	10. NOAA Chart # 11342	11. GLO Atlas Page # 11	12. County Orange
-------------------------	------------------------	---------------------------	----------------------------	----------------------

13. Site Information: 11-R Site 11-R consists of a series of approximately 20 inlets that are located North of FM 1006 on Adam's Bayou. These inlets are shallow, narrow, and some form oxbows. The banks of Adams Bayou are lined with freshwater swamp and marsh. The inlets are littered with stumps and fallen trees, which makes navigating even a small boat a task. North of FM 1006/Chemical Rd two roads cross the Bayou, Stark Road and Main Street. Two railroad bridges cross Adams Bayou just South of Main St. Residential areas line a number of the inlets. Key areas that may require attention during a spill are Orange Wastewater Treatment Facility, Levingston Park, Lottie's Landing. City of Orange Fire Dept. (409) 883-8533. Lower Neches WMA(409) 736-2551. Orange Boat Club (409) 883-8023. Muddy Water Marine (409) 330-4722.	14. Latitude From: 30° 05' 36.02"	To:	15. Longitude From: 093° 44' 58.6"	To:
---	--------------------------------------	-----	---------------------------------------	-----

16. Closest Boat Ramp Muddy Water Marina	17. Distance From Ramp On- Site	18. Boat Type Flat Bottom Boat
---	------------------------------------	-----------------------------------

19. Directions From Local Sector From MSU go north 0.4 miles on Hwy 69 service road to u-turn @ Hwy 365. Travel south on Hwy 69 for 3.1 miles to the clover leaf to Hwy 73 east & travel 4.7 miles & then merge onto Hwy 73/87. Continue 10 miles on Hwy 73/87 through Bridge City & turn right on Plant Road/1006. Travel 4.0 miles to Muddy Water Marina on the right.	20. Closest Airport Orange County
	21. Closest Helo Spot Orange County

22. Trustee/Contact Numbers USCG: (409) 723-6509 RRC: (713)869-5001 USCG DUTY: (409) 719-1597 TPWD: (409)892-8666 TGLO: (800) 832-8224 NRDA: (512) 463 -9309 TCEQ: (409)781-9330 USFWS: (281) 286-8282	23. Resources at Risk Atlas Priority Low Environmental Freshwater Marsh and Swamp Economic Residential and Industrial Area.	24. Width of inlet Varies in width but up to 200 ft. in ft. 25. Water depth in ft. 1-5 ft. 26. Current Slow 27. No. of Personnel 4
--	---	---

25. Booming Strategy Recommendation There are no inlets greater than 200 feet in width on Adam's Bayou North of FM 1006. Boom should be configured in an exclusion pattern as to prevent oil from entering cuts. Bring sufficient anchors and rope to accomplish task



29. Prepared By:	30. Reviewed by (PSC)	31. Reviewed by (OSC):
Assignment List	ICS 204 OS (Geographic Response Plan)	Project Updated:

"Response strategies may need to be modified to account for changes due to seasonality, weather conditions, spill characteristics, tides and any other considerations."

1. Incident Name	2. Operational Period (Date/Time)	Assignment List ICS 204-OS
------------------	-----------------------------------	----------------------------

3. Branch	4. Division/Group
-----------	-------------------

5. Operations Personnel	
Operations Section Chief	_____
Branch Director	_____
Division/Group Supervisor	_____

6. Resources Assigned This Period						"X" Indicates 204a attachment with special instructions
Resource Identifier	Leader	Contact Info #	# of Persons	Reporting Info/Notes/Remarks		

7. Assignments

SAFETY NOTE: Shallow, submerged stumps and logs, reptiles in the area.

8. Site Number: 11-S	9. Quad Name Orange	10. NOAA Chart # 11342	11. GLO Atlas Page # 11	12. County Orange
-------------------------	------------------------	---------------------------	----------------------------	----------------------

13. Site Information: 11-S Site 11-S consists of a series of 10 inlets South of FM 1006 on Adams Bayou. There are several important points along this section of the Bayou: Orange Yacht Club, Orange Marine Towing & Salvage, Star Shipbuilding, Dupont Sabine River Works, and the Lower Neches Wildlife Management Area. The banks of the Bayou near these sites consist of freshwater to brackish water marsh and scattered trees. Adams Bayou leads into the Sabine River approximately 1 ¼ miles South of FM 1006. City of Orange Fire Dept. (409) 883-8533. Lower Neches WMA (409) 736-2551. Orange Boat Club (409) 883-8023. Muddy Water Marine (409) 330-4722.	14. Latitude From: 30° 03' 57"	To:	
	15. Longitude From: 093° 44' 59"	To:	

16. Closest Boat Ramp Muddy Water Marina	17. Distance From Ramp On site	18. Boat Type Flat Bottom Boat
---	-----------------------------------	-----------------------------------

19. Directions From Local Sector From MSU go north 0.4 miles on Hwy 69 service road to u-turn @ Hwy 365. Travel south on Hwy 69 for 3.1 miles to the clover leaf to Hwy 73 east & travel 4.7 miles & then merge onto Hwy 73/87. Continue 10 miles on Hwy 73/87 through Bridge City & turn right on Plant Road/1006. Travel 4.0 miles to Muddy Water Marina on the right.	20. Closest Airport Orange County
	21. Closest Helo Spot Orange County

22. Trustee/Contact Numbers	23. Resources at Risk	24. Width of inlet
USCG: (409) 723-6509 RRC: (713)869-5001	Atlas Priority Low	Inlets varies in size to 500 ft in ft.
USCG DUTY: (409) 719-1597 TPWD: (409)892-8666	Environmental Freshwater marsh and brackish marsh.	25. Water depth in ft. 1-18 ft
TGLO: (800) 832-8224 NRDA: (512) 463 -9309	Economic Residential and industrial area	26. Current Slow
TCEQ: (409)781-9330 USFWS: (281) 286-8282		27. No. of Personnel 4

25. Booming Strategy Recommendation There are no inlets greater than 500 feet in width on Adams Bayou South of FM 1006/Chemical Rd. Boom should be configured in an exclusion pattern as to prevent oil from entering cuts. Bring sufficient anchors and rope to accomplish task.
--

AERIAL PHOTO

ON SITE PHOTO



29. Prepared By:	30. Reviewed by (PSC)	31. Reviewed by (OSC):
Assignment List	ICS 204 OS (Geographic Response Plan)	Project Updated:

"Response strategies may need to be modified to account for changes due to seasonality, weather conditions, spill characteristics, tides and any other considerations."

1. Incident Name	2. Operational Period (Date/Time)	Assignment List ICS 204-OS
------------------	-----------------------------------	----------------------------

3. Branch	4. Division/Group
-----------	-------------------

5. Operations Personnel Operations Section Chief _____ Branch Director _____ Division/Group Supervisor _____

6. Resources Assigned This Period						"X" Indicates 204a attachment with special instructions
Resource Identifier	Leader	Contact Info #	# of Persons	Reporting Info/Notes/Remarks		

7. Assignments

SAFETY NOTE: High volume recreational and commercial traffic in area, reptiles in area.

8. Site Number: 11-T	9. Quad Name Orange	10. NOAA Chart # 11342	11. GLO Atlas Page # 11	12. County Orange
-------------------------	------------------------	---------------------------	----------------------------	----------------------

13. Site Information: 11-T Site 11-T is the mouth of Adams Bayou, which is located on the Texas side of the Sabine River approximately 1.5 miles east of Muddy Water Marina boat ramp on Adams Bayou. The Lower Neches Wildlife Management Area makes up the North bank of Adams Bayou. The banks consist of intermediate marsh flora and fauna. DuPont Sabine River Works (409) 886-6542.	14. Latitude From: 30° 02' 53"	To:		15. Longitude From: 093° 43' 46"	To:
--	--	-----	--	--	-----

16. Closest Boat Ramp Muddy Water Marina	17. Distance From Ramp 1.5 Miles	18. Boat Type Flat Bottom Boat
---	-------------------------------------	-----------------------------------

19. Directions From Local Sector From MSU go north 0.4 miles on Hwy 69 service road to u-turn @ Hwy 365. Travel south on Hwy 69 for 3.1 miles to the cloverleaf to Hwy 73 east & travel 4.7 miles & then merge onto Hwy 73/87. Continue 10 miles on Hwy 73/87 through Bridge City & turn right on Plant Road/1006. Travel 4.0 miles to Muddy Water Marina on the right.	20. Closest Airport Orange County	21. Closest Helo Spot Orange County
--	--------------------------------------	--

22. Trustee/Contact Numbers USCG: (409) 723-6509 RRC: (713)869-5001 USCG DUTY: (409) 719-1597 TPWD: (409)892-8666 TGLO: (800) 832-8224 NRDA: (512) 463 -9309 TCEQ: (409)781-9330 USFWS: (281) 286-8282	23. Resources at Risk Atlas Priority High Environmental Waterfowl, alligators and intermediate marsh. Economic Commercial traffic from ICWW,	24. Width of inlet 540' ft in ft. 25. Water depth in ft. 13' ft 26. Current Medium 27. No. of Personnel 4
--	---	--

25. Booming Strategy Recommendation Boom should be configured in an exclusion and deflection pattern as to prevent oil from entering cut. Bring sufficient anchors and rope to accomplish task



29. Prepared By:	30. Reviewed by (PSC)	31. Reviewed by (OSC):
Assignment List	ICS 204 OS (Geographic Response Plan)	Project Updated:

"Response strategies may need to be modified to account for changes due to seasonality, weather conditions, spill characteristics, tides and any other considerations."

1. Incident Name	2. Operational Period (Date/Time)	Assignment List ICS 204-OS
------------------	-----------------------------------	----------------------------

3. Branch	4. Division/Group
-----------	-------------------

5. Operations Personnel	
Operations Section Chief	_____
Branch Director	_____
Division/Group Supervisor	_____

6. Resources Assigned This Period "X" Indicates 204a attachment with special instructions

Resource Identifier	Leader	Contact Info #	# of Persons	Reporting Info/Notes/Remarks

7. Assignments

SAFETY NOTE: Reptiles in area, high volume of commercial traffic

8. Site Number: 11-V	9. Quad Name Orange	10. NOAA Chart # 11342	11. GLO Atlas Page # 11	12. County Orange
-------------------------	------------------------	---------------------------	----------------------------	----------------------

13. Site Information: 11-V Site 11-V is an outfall canal located on the Texas side of the Sabine River approximately 2.5 miles south of Muddy Water Marina boat ramp.. This canal has a gate at the entrance, which is kept locked. See contact numbers below for access to this site. This canal is recognizable by power-lines running overhead. Lake Ronel Oil Co. (903) 520-9078. DuPont Sabine River Works (409) 886-6542.	14. Latitude From: 30° 02' 16.22"	To:	
	15. Longitude From: 093° 44' 21.74	To:	

16. Closest Boat Ramp Muddy Water Marina	17. Distance From Ramp 2.5 Miles	18. Boat Type Flat Bottom Boat
---	-------------------------------------	-----------------------------------

19. Directions From Local Sector From MSU go north 0.4 miles on Hwy 69 service road to u-turn @ Hwy 365. Travel south on Hwy 69 for 3.1 miles to the clover leaf to Hwy 73 east & travel 4.7 miles & then merge onto Hwy 73/87. Continue 10 miles on Hwy 73/87 through Bridge City & turn right on Plant Road/1006. Travel 4.0miles to Muddy Water Marina on the right.	20. Closest Airport Orange County
	21. Closest Helo Spot Orange County

22. Trustee/Contact Numbers	23. Resources at Risk	24. Width of inlet 100' ft in ft.
USCG: (409) 723-6509 RRC: (713)869-5001	Atlas Priority Low	25. Water depth in ft. 12' ft
USCG DUTY: (409) 719-1597 TPWD: (409)892-8666	Environmental Waterfowl, alligators and intermediate marsh.	26. Current Slow
TGLO: (800) 832-8224 NRDA: (512) 463 -9309	Economic Commercial traffic and Industria	27. No. of Personnel 4
TCEQ: (409)781-9330 USFWS: (281) 286-8282		

25. Booming Strategy Recommendation Boom should be configured in an exclusion pattern as to prevent oil from entering cut. Bring sufficient anchors and rope to accomplish task.



29. Prepared By:	30. Reviewed by (PSC)	31. Reviewed by (OSC):
Assignment List	ICS 204 OS (Geographic Response Plan)	Project Updated:

"Response strategies may need to be modified to account for changes due to seasonality, weather conditions, spill characteristics, tides and any other considerations."

1. Incident Name	2. Operational Period (Date/Time)	Assignment List ICS 204-OS
------------------	-----------------------------------	----------------------------

3. Branch	4. Division/Group
-----------	-------------------

5. Operations Personnel	_____
Operations Section Chief	_____
Branch Director	_____
Division/Group Supervisor	_____

6. Resources Assigned This Period					"X" Indicates 204a attachment with special instructions
Resource Identifier	Leader	Contact Info #	# of Persons	Reporting Info/Notes/Remarks	

7. Assignments

SAFETY NOTE: High volume of commercial traffic, reptiles in area.

8. Site Number: 11-W	9. Quad Name Orange	10. NOAA Chart # 11342	11. GLO Atlas Page # 11	12. County Orange
-------------------------	------------------------	---------------------------	----------------------------	----------------------

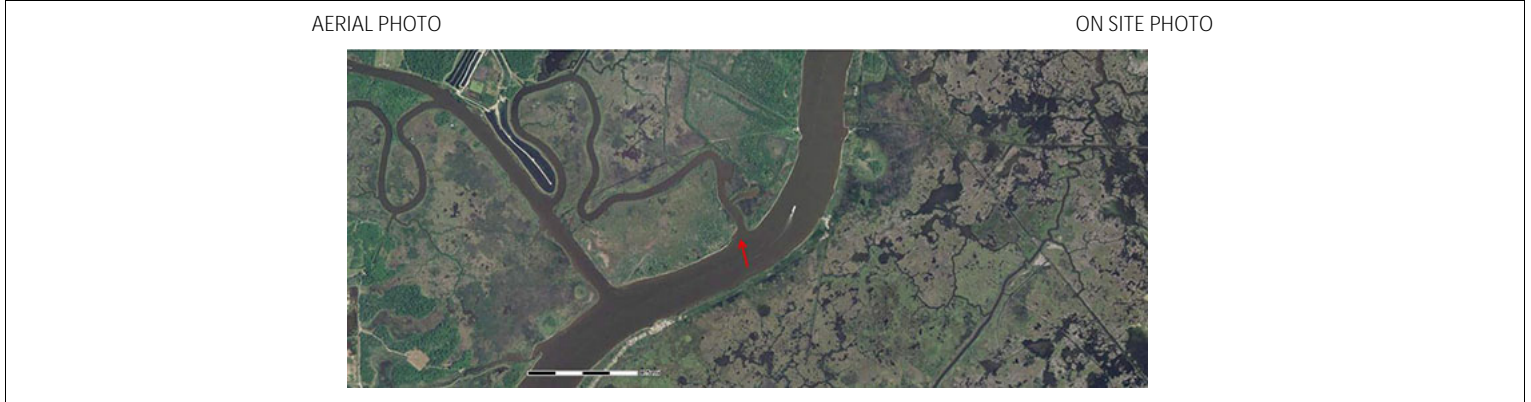
13. Site Information: 11-W Site 11-W is a tributary of Cow Bayou located on the Texas side of the Sabine River. It is approximately 3.5 miles from Peggy's on the Bayou in Bridge City. The banks of this tributary consist of intermediate marsh. A highly sensitive marsh is located across the Sabine River in Louisiana. Peggy's on the Bayou (409) 886-1115. Lake Ronel Oil Co. (903) 520-9078. DuPont Sabine River Works (409) 886-6542.	14. Latitude From: 30° 01' 18"	To:	
	15. Longitude From: 093° 44'43"	To:	

16. Closest Boat Ramp Peggy's on the Bayou	17. Distance From Ramp 3.5 Miles	18. Boat Type Flat Bottom Boat
---	-------------------------------------	-----------------------------------

19. Directions From Local Sector From MSU go north 0.4 miles on Hwy 69 service road to u-turn @ Hwy 365. Travel south on Hwy 69 for 3.1 miles to the cloverleaf to Hwy 73 east & travel 4.7 miles & then merge onto Hwy 73/87. Travel 7.4 miles to East Roundbunch Rd./ 1442 & turn right & travel 2.5 miles to Bridge City Bait restaurant/marina on the right.	20. Closest Airport Orange County
	21. Closest Helo Spot Orange County

22. Trustee/Contact Numbers	23. Resources at Risk	24. Width of inlet 840 ft. in ft.
USCG: (409) 723-6509 RRC: (713)869-5001	Atlas Priority Low	25. Water depth in ft. 6 ft.
USCG DUTY: (409) 719-1597 TPWD: (409)892-8666	Environmental Intermediate marsh habitat	26. Current Slow
TGLO: (800) 832-8224 NRDA: (512) 463 -9309	Economic Commercial traffic	27. No. of Personnel 4
TCEQ: (409)781-9330 USFWS: (281) 286-8282		

25. Booming Strategy Recommendation Boom should be configured in an exclusion pattern as to prevent oil from entering cut. Bring sufficient anchors and rope to accomplish task.



29. Prepared By:	30. Reviewed by (PSC)	31. Reviewed by (OSC):
Assignment List	ICS 204 OS (Geographic Response Plan)	Project Updated:

"Response strategies may need to be modified to account for changes due to seasonality, weather conditions, spill characteristics, tides and any other considerations."