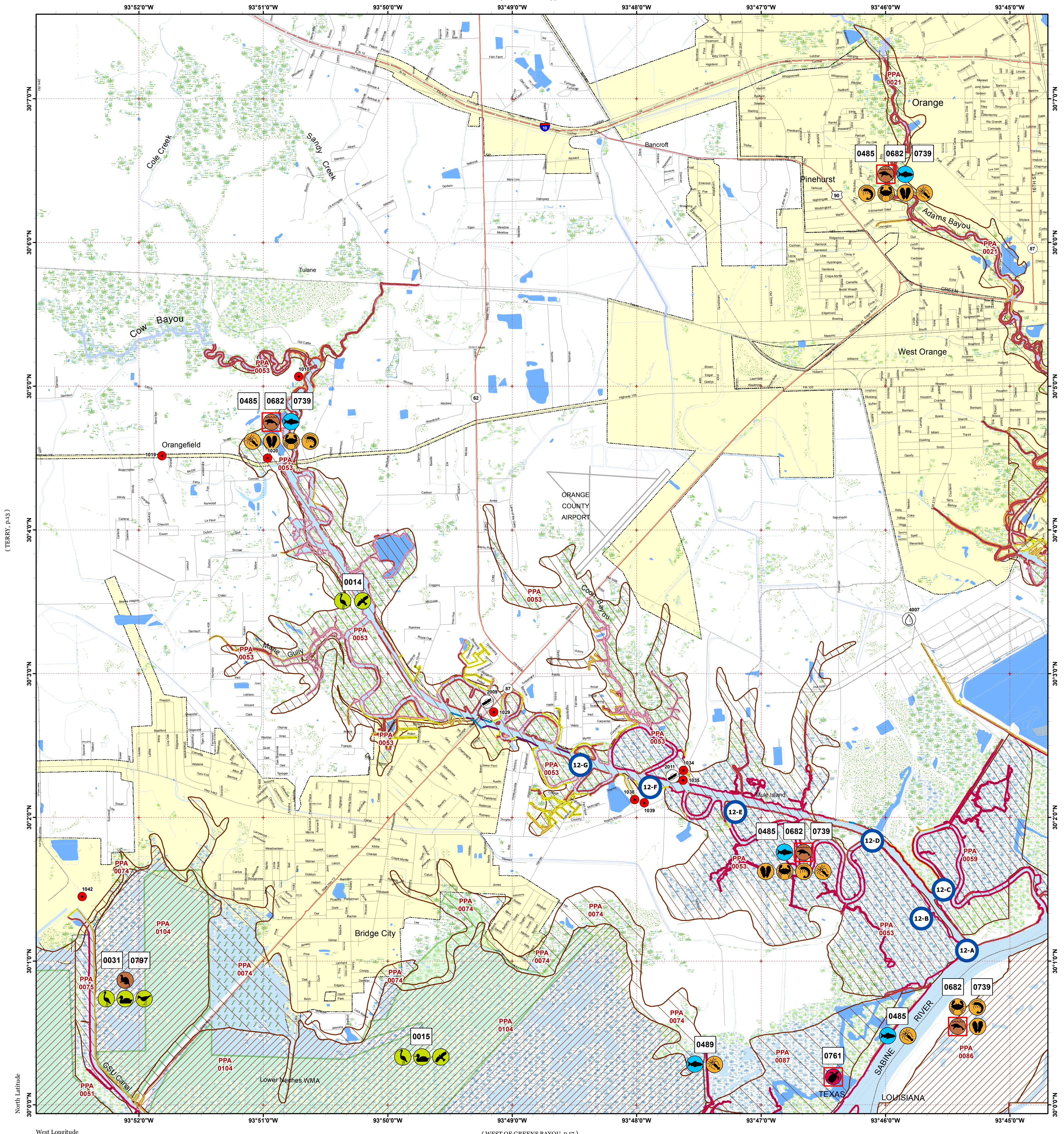


ORANGEFIELD

(MAURICEVILLE, p.7)

Click Here or Scroll Down for Associated Map Data

Click on the Geographic Response Plan Target to View the ICS Form

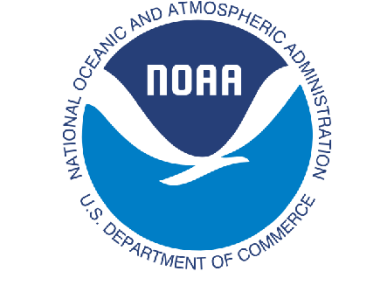


(TERRY, p.13)

(ORANGE, p.1)

West Longitude

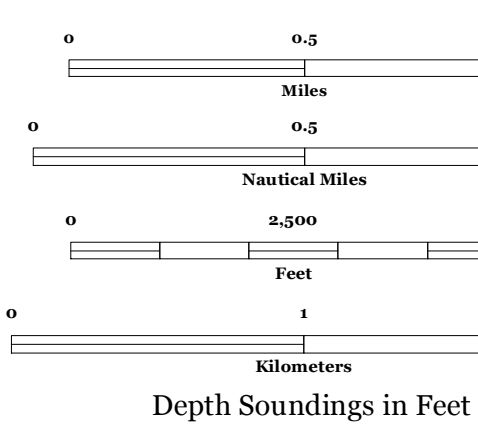
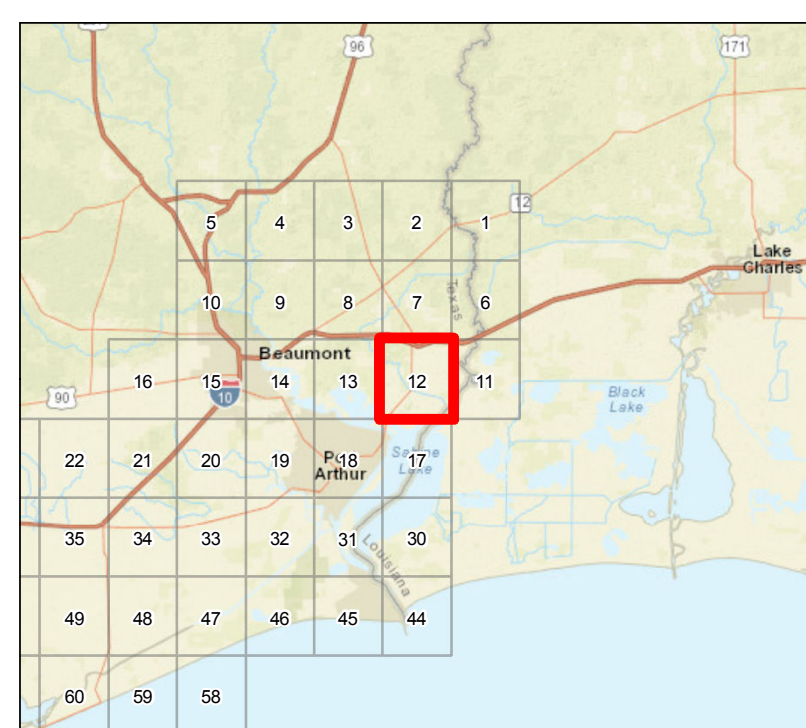
(WEST OF GREENS BAYOU, p.17)



Oil Spill Planning and Response Atlas

2016

The Texas General Land Office makes no representations or warranties regarding the accuracy or completeness of the information depicted on this map or the data from which it was produced. This map is not suitable for navigational purposes and does not purport to depict boundaries of private and public land.



Human Use Features

- Boat Ramp
- Facility
- Water Intake
- Geographic Response Plan

Priority Protection Areas

- HIGH
- MEDIUM
- LOW

Map Base Layers

- Interstate Highway
- State Highway
- US Highway
- Railroads
- Airport Runways
- Road
- GIWW
- State Parks/WMA's
- Estuarine Seagrass or Algae Bed
- Bays
- Salt and Brackish Marshes
- Intertidal Scrub/Shrub
- Freshwater Marshes
- Swamps and Flooded Woodlands
- Willow Thickets
- Lake / Pond
- Tidally Influenced River
- Perennial River
- Intermittent River
- County Boundary
- City Limits

Species Icons Within Map Quad

- Turtle T/E
- Mammal T/E
- Benthic Marine
- Small Mammal
- Raptor
- Shorebird
- Wading
- Waterfowl
- Crab
- Shrimp
- Fish

ENVIRONMENTAL SENSITIVITY INDEX

- 10D Mangroves and Woody Vegetation
- 10C Freshwater Swamps
- 10B Freshwater Marshes
- 10A Salt and Brackish Water Marshes
- 9 Sheltered Tidal Flats
- 8C Sheltered Rocky/Karst Shores
- 8D Sheltered Scarps
- 8B Sheltered Riprap Structures
- 8A Sheltered Solid Manmade Structures
- 7 Exposed Tidal Flats
- 6B Exposed Riprap Structures
- 6A Gravel or Shell Beaches
- 5 Mixed Sand and Gravel or Shell Beaches
- 4 Coarse-Grained Sand Beaches
- 3B Scarps and Steep Slopes in Sand
- 3A Fine-Grained Sand Beaches
- 2B Wave-Cut Clay Platforms
- 2A Scarps and Steep Slopes in Clay
- 1 Exposed Walls and Other Solid Structures

Quadrant: ORANGEFIELD

Map # :12

Biological Information for this quadrant represents known concentration areas of occurrence.

Habitat Priority Protection Areas

PPA ID	PRIORITY	POLY DESCRIPTION	BIRDS RANK	BIRDS DESCRIPTION	FISH RANK	FISH DESCRIPTION	WETLANDS RANK	WETLANDS DESCRIPTION
PPA0021	LOW	Adams Bayou					HIGH	Cypress swamps, bottomland hardwoods
PPA0051	HIGH	Bessie Heights Marsh (largely submerged)	HIGH	Feeding area for wading birds, waterfowl; nesting by moorhen, rails, wading birds; river otter	HIGH	Abundant red drum, sheepshead, juvenile blue crab; high priority fishing area, commercial crabbing	HIGH	Formerly vegetated marsh, but now primarily open water
PPA0053	MEDIUM	Cow Bayou marsh	MEDIUM				HIGH	Marsh grading into bottomland hardwoods, palmetto-cypress swamp
PPA0059	MEDIUM	Lower Cow Bayou marsh	MEDIUM	Wading birds, osprey, rails, alligator	MEDIUM	Nursery	MEDIUM	Marshhay cordgrass
PPA0074	LOW	Northern margin of Old River Bayou marsh					HIGH	Wetlands
PPA0075	MEDIUM	Marsh west of Bridge City	HIGH				HIGH	
PPA0086	HIGH	Marsh between Sabine River and Black Bayou; accessible to boats from both	HIGH		MEDIUM	Nursery	MEDIUM	
PPA0087	LOW	Marsh west of Sabine River	HIGH				LOW	
PPA0104	HIGH	Old River Bayou and adjacent marsh; part of Lower Neches WMA	HIGH	Brackish marsh used by waterfowl (gadwall, teals, etc.), nesting rails, wading birds, alligator	HIGH	High quality nursery for fish, shrimp	HIGH	Marshhay cordgrass; some leveed areas

Biological Resources

Bird

RARNUM	NAME	S F	T E	CONC	J	F	M	A	M	J	J	A	S	O	N	D	Nesting	Migrating	Molting
0014	Osprey			-	X	X	X	X	X				X	X	X	X	-	-	-
	Marsh birds			-	X	X	X	X	X	X	X	X	X	X	X	X	-	-	-
	Wading birds			-	X	X	X	X	X	X	X	X	X	X	X	X	-	-	-
0015	Osprey			-	X	X	X	X	X				X	X	X	X	-	-	-
	Wading birds			-	X	X	X	X	X	X	X	X	X	X	X	X	-	-	-
	Dabbling ducks			-	X	X	X	X	X				X	X	X	X	-	-	-
	Waterfowl			-	X	X	X	X	X	X	X	X	X	X	X	X	-	-	-
0031	Black-necked stilt			10S		X	X	X	X	X	X	X	X	X	X		-	-	-
	Dowitchers			100S	X	X	X	X	X		X	X	X	X	X	X	-	JUL-MAY*	-
	Dunlin			100S	X	X	X	X	X				X	X	X	X	-	-	-
	Killdeer			100S	X	X	X	X	X	X	X	X	X	X	X	X	-	DEC-MAR	-
	Shorebirds			100S	X	X	X	X	X		X	X	X	X	X	X	-	-	-
	Western sandpiper			100S	X	X	X	X	X	X	X	X	X	X	X	X	-	JUL-MAY*	-
	Willet			100S	X	X	X	X	X	X	X	X	X	X	X	X	-	AUG-APR*	-
	Yellowlegs			10S	X	X	X	X	X		X	X	X	X	X	X	-	JUL-MAY*	-
	Marsh birds			-	X	X	X	X	X	X	X	X	X	X	X	X	-	-	-
	Wading birds			-	X	X	X	X	X	X	X	X	X	X	X	X	-	-	-
	Mottled duck			-	X	X	X	X	X	X	X	X	X	X	X	X	FEB-AUG	-	JUN-AUG
	Waterfowl			-	X	X	X	X	X	X	X	X	X	X	X	X	-	-	-

Fish

RARNUM	NAME	S F	T E	CONC	J	F	M	A	M	J	J	A	S	O	N	D	Spawning	Eggs	Larvae	Juveniles	Adults
0485	Gizzard shad			ABUNDANT	X	X	X	X	X	X	X	X	X	X	X	X	-	-	-	-	JAN-DEC
	Atlantic croaker			HIGHLY-ABUNDANT	X	X	X	X	X	X	X	X	X	X	X	X	-	-	JAN-JUN	JAN-DEC	JAN-DEC
	Bay anchovy			COMMON	X	X	X	X	X	X	X	X	X	X	X	X	MAR-NOV	MAR-NOV	MAR-NOV	JAN-DEC	JAN-DEC
	Black drum			COMMON	X	X	X	X	X	X	X	X	X	X	X	X	-	-	-	JAN-DEC	JAN-DEC
	Bull shark			RARE	X	X	X	X	X	X	X	X	X	X	X	X	-	MAY-AUG	MAY-AUG	APR-NOV	JAN-DEC
	Gafftopsail catfish			ABUNDANT				X	X	X	X	X	X	X			APR-MAY	-	-	APR-OCT	APR-OCT
	Gulf menhaden			ABUNDANT	X	X	X	X	X	X	X	X	X	X	X	X	-	-	-	JAN-DEC	APR-DEC
	Hardhead catfish			ABUNDANT	X	X	X	X	X	X	X	X	X	X	X	X	MAY-AUG	MAY-SEP	MAY-SEP	JUN-SEP	JAN-DEC
	Pinfish			RARE				X	X	X	X	X	X	X			-	-	-	APR-OCT	APR-OCT
	Red drum			COMMON	X	X	X	X	X	X	X	X	X	X	X	X	-	-	-	JAN-DEC	JAN-DEC
	Sand seatrout			COMMON	X	X	X	X	X	X	X	X	X	X	X	X	-	-	-	JAN-DEC	JAN-DEC
	Sheepshead			COMMON	X	X	X	X	X	X	X	X	X	X	X	X	-	-	-	DEC-FEB	JAN-DEC
	Southern flounder			COMMON	X	X	X	X	X	X	X	X	X	X	X	X	-	-	-	JAN-DEC	JAN-DEC
	Spot			HIGHLY-ABUNDANT		X	X	X	X	X	X	X	X	X	X	X	-	-	-	MAR-OCT	MAR-NOV
	Spotted seatrout			COMMON	X	X	X	X	X	X	X	X	X	X	X	X	APR-OCT	APR-OCT	APR-OCT	OCT-NOV	JAN-DEC
	Star drum			-	X	X	X	X	X	X	X	X	X	X	X	X	-	-	-	-	-
	Striped mullet			COMMON	X	X	X	X	X	X	X	X	X	X	X	X	-	-	-	JAN-DEC	JAN-DEC
	Tarpon			RARE		X	X	X	X	X	X	X	X	X			-	-	-	MAR-NOV	-
	White mullet			COMMON					X	X	X	X					-	-	-	JUN-SEP	-
	Gulf killifish			COMMON	X	X	X	X	X	X	X	X	X	X	X	X	MAR-SEP	MAR-SEP	MAR-OCT	JAN-DEC	JAN-DEC
	Silver perch			RARE	X	X	X	X	X	X	X	X	X	X	X	X	MAY-SEP	MAY-SEP	MAY-SEP	OCT-NOV	JAN-DEC
	Silversides			COMMON	X	X	X	X	X	X	X	X	X	X	X	X	MAR-AUG	MAR-AUG	MAR-AUG	JAN-DEC	JAN-DEC
	Alligator gar			COMMON	X	X	X	X	X	X	X	X	X	X	X	X	-	-	-	JAN-DEC	JAN-DEC
Spotted gar			ABUNDANT	X	X	X	X	X	X	X	X	X	X	X	X	APR-MAY	APR-MAY	-	JAN-DEC	JAN-DEC	
Atlantic spadefish			RARE					X	X	X	X					-	-	-	JUL-OCT	-	
Bay whiff			RARE	X	X	X	X	X	X	X	X	X	X	X	X	-	-	-	JUL-AUG	JAN-DEC	
Spotfin mojarra			RARE									X	X			-	-	-	-	-	
Atlantic bumper			RARE									X	X			-	-	-	-	AUG-SEP	
Crevalle jack			COMMON					X	X	X						-	-	-	JUN-AUG	-	
Spanish mackerel			COMMON									X	X			-	-	-	SEP-OCT	SEP-OCT	
0489	Gizzard shad			ABUNDANT	X	X	X	X	X	X	X	X	X	X	X	X	-	-	-	-	JAN-DEC
	Atlantic croaker			HIGHLY-ABUNDANT	X	X	X	X	X	X	X	X	X	X	X	X	-	-	JAN-JUN	JAN-DEC	JAN-DEC
	Bay anchovy			COMMON	X	X	X	X	X	X	X	X	X	X	X	X	MAR-NOV	MAR-NOV	MAR-NOV	JAN-DEC	JAN-DEC

Fish

RARNUM	NAME	S F	T E	CONC	J	F	M	A	M	J	J	A	S	O	N	D	Spawning	Eggs	Larvae	Juveniles	Adults
	Black drum			COMMON	X	X	X	X	X	X	X	X	X	X	X	X	-	-	-	JAN-DEC	JAN-DEC
	Bull shark			COMMON	X	X	X	X	X	X	X	X	X	X	X	X	-	MAY-AUG	MAY-AUG	APR-NOV	JAN-DEC
	Gafftopsail catfish			ABUNDANT				X	X	X	X	X	X	X			APR-MAY	-	-	APR-OCT	APR-OCT
	Gulf menhaden			ABUNDANT	X	X	X	X	X	X	X	X	X	X	X	X	-	-	-	JAN-DEC	APR-DEC
	Hardhead catfish			ABUNDANT	X	X	X	X	X	X	X	X	X	X	X	X	MAY-AUG	MAY-SEP	MAY-SEP	JUN-SEP	JAN-DEC
	Pinfish			RARE				X	X	X	X	X	X	X			-	-	-	APR-OCT	APR-OCT
	Red drum			COMMON	X	X	X	X	X	X	X	X	X	X	X	X	-	-	-	JAN-DEC	JAN-DEC
	Sand seatrout			COMMON	X	X	X	X	X	X	X	X	X	X	X	X	-	-	-	JAN-DEC	JAN-DEC
	Sheepshead			COMMON	X	X	X	X	X	X	X	X	X	X	X	X	-	-	-	DEC-FEB	JAN-DEC
	Southern flounder			COMMON	X	X	X	X	X	X	X	X	X	X	X	X	-	-	-	JAN-DEC	JAN-DEC
	Spot			HIGHLY-ABUNDANT			X	X	X	X	X	X	X	X	X		-	-	-	MAR-OCT	MAR-NOV
	Spotted seatrout			COMMON	X	X	X	X	X	X	X	X	X	X	X	X	APR-OCT	APR-OCT	APR-OCT	OCT-NOV	JAN-DEC
	Star drum			-	X	X	X	X	X	X	X	X	X	X	X	X	-	-	-	-	-
	Striped mullet			COMMON	X	X	X	X	X	X	X	X	X	X	X	X	-	-	-	JAN-DEC	JAN-DEC
	Tarpon			RARE			X	X	X	X	X	X	X	X	X		-	-	-	MAR-NOV	-
	White mullet			COMMON						X	X	X	X				-	-	-	JUN-SEP	-
	Gulf killifish			COMMON	X	X	X	X	X	X	X	X	X	X	X	X	MAR-SEP	MAR-SEP	MAR-OCT	JAN-DEC	JAN-DEC
	Silver perch			RARE	X	X	X	X	X	X	X	X	X	X	X	X	MAY-SEP	MAY-SEP	MAY-SEP	OCT-NOV	JAN-DEC
	Silversides			COMMON	X	X	X	X	X	X	X	X	X	X	X	X	MAR-AUG	MAR-AUG	MAR-AUG	JAN-DEC	JAN-DEC
	Alligator gar			COMMON	X	X	X	X	X	X	X	X	X	X	X	X	-	-	-	JAN-DEC	JAN-DEC
	Spotted gar			ABUNDANT	X	X	X	X	X	X	X	X	X	X	X	X	APR-MAY	APR-MAY	-	JAN-DEC	JAN-DEC
	Atlantic spadefish			RARE							X	X	X	X			-	-	-	JUL-OCT	-
	Bay whiff			RARE	X	X	X	X	X	X	X	X	X	X	X	X	-	-	-	JUL-AUG	JAN-DEC
	Spotfin mojarra			RARE								X	X				-	-	-	-	-
	Atlantic bumper			RARE								X	X				-	-	-	-	AUG-SEP
	Crevalle jack			COMMON						X	X	X					-	-	-	JUN-AUG	-
	Spanish mackerel			COMMON									X	X			-	-	-	SEP-OCT	SEP-OCT

Invertebrate

RARNUM	NAME	S F	T E	CONC	J	F	M	A	M	J	J	A	S	O	N	D	Spawning	Eggs	Larvae	Juveniles	Adults
0682	Atlantic rangia			ABUNDANT	X	X	X	X	X	X	X	X	X	X	X	X	MAR-OCT	-	MAR-OCT	JAN-DEC	JAN-DEC
	Blue crab			ABUNDANT	X	X	X	X	X	X	X	X	X	X	X	X	MAR-NOV	-	MAR-NOV	JAN-DEC	JAN-DEC
	Brown shrimp			ABUNDANT			X	X	X	X	X	X	X	X	X	X	-	-	MAR-APR	APR-DEC	-
	Grass shrimp			COMMON	X	X	X	X	X	X	X	X	X	X	X	X	JAN-DEC	JAN-DEC	JAN-DEC	JAN-DEC	JAN-DEC
	White shrimp			HIGHLY-ABUNDANT	X	X	X	X	X	X	X	X	X	X	X	X	-	-	MAY-JUN	APR-DEC	MAR-JAN

Marine Mammal

RARNUM	NAME	S F	T E	CONC	J	F	M	A	M	J	J	A	S	O	N	D	Mating	Calving	Pupping	Molting
0739	West Indian manatee	S/F	E/E	VERY-RARE							X	X	X				-	-	-	-

Reptile

RARNUM	NAME	S F	T E	CONC	J	F	M	A	M	J	J	A	S	O	N	D	Nesting	Hatching	Interesting	Juveniles	Adults
0761	Kemp's ridley sea turtle	S/F	E/E	COMMON				X	X	X	X	X	X	X	X		-	-	-	APR-NOV	-

Terrestrial Mammal

RARNUM	NAME	S F	T E	CONC	J	F	M	A	M	J	J	A	S	O	N	D	Nesting
0797	Northern river otter			-			X	X	X	X	X	X	X	X	X	X	N/A

Human Use Resources

Boat Ramp	RARNUM	NAME	CONTACT	CONTACT INFO
	2009	Cow Bayou		orangesabine@cowbayou
	2011	Bridge City Bait		orangesabine@bridgecitybait
Facility	RARNUM	NAME	CONTACT	CONTACT INFO
	1010	Chandler-Cow Bayou Unit #1 ST	Chris McGullam	409-920-5821
	1019	Orangefield Dome Oil Field	Chris McGullam	409-920-5821
	1020	Kilmarnock Oil Co., Inc.	Mary Brown	337-529-6772
	1029	Knife River Bridge City Ready Mix Plant	Daniel Eberhard	
	1034	Sabine Lake Production Boat dock refueling station	Mike Raines	337-764-5038
	1035	Bridge City Seafood	Richard Albair	
	1038	Burton Shipyard, Inc.	Anna Wheeler	409-735-2491
	1039	Inland Boat Works	Randy Lee	409-988-0005
	1042	Entergy Sabine Plant	Don Lierman	409-734-3204
Water Intake	RARNUM	NAME	CONTACT	CONTACT INFO
	4007	DUPONT SABINE RIVER WORKS		

1. Incident Name	2. Operational Period (Date/Time)	Assignment List ICS 204-OS
------------------	-----------------------------------	----------------------------

3. Branch	4. Division/Group
-----------	-------------------

5. Operations Personnel	_____
Operations Section Chief	_____
Branch Director	_____
Division/Group Supervisor	_____

6. Resources Assigned This Period "X" Indicates 204a attachment with special instructions

Resource Identifier	Leader	Contact Info #	# of Persons	Reporting Info/Notes/Remarks

7. Assignments

SAFETY NOTE: Commercial and recreational vessel traffic, reptiles in area

8. Site Number: 12-A	9. Quad Name Orangefield	10. NOAA Chart # 11343	11. GLO Atlas Page # 12	12. County Orange
-------------------------	-----------------------------	---------------------------	----------------------------	----------------------

13. Site Information: 12-A Site 12-A is the intersection of Cow Bayou and Sabine River. This is a wide inlet located approximately 2.75 miles East of Peggy's on the Bayou. The banks of the Bayou consist of salt/brackish water marsh. There are several boat launches located on Cow Bayou. Peggy's on the Bayou (409) 886-1115. Burton Shipyard, Inc. (409)-735-8250.	14. Latitude From: N 30°01'04.92	To:	
	15. Longitude From: W 93°45'20.03	To:	

16. Closest Boat Ramp Peggy's on the Bayou	17. Distance From Ramp 2.75 Miles	18. Boat Type Flat Bottom Boat
--	--------------------------------------	-----------------------------------

19. Directions From Local Sector From MSU go north 0.4 miles on Hwy 69 service road to u-turn @ Hwy 365. Travel south on Hwy 69 for 3.1 miles to the clover leaf to Hwy 73 east & travel 4.7 miles & then merge onto Hwy 73/87. Travel 7.4 miles to East Roundbunch Rd./ 1442 & turn right & travel 2.5 miles to Bridge City Bait restaurant/marina on the right.	20. Closest Airport Orange County Airport	21. Closest Helo Spot Orange County Airport
--	--	--

22. Trustee/Contact Numbers	23. Resources at Risk	24. Width of inlet 590 ft. in ft.
USCG: (409) 723-6509 RRC: (713)869-5001	Atlas Priority Low	25. Water depth in ft. 17 ft.
USCG DUTY: (409) 719-1597 TPWD: (409)892-8666	Environmental Salt/brackish marsh habitat	26. Current Slow
TGLO: (800) 832-8224 NRDA: (512) 463 -9309	Economic Commercial and Residential Are	27. No. of Personnel 4
TCEQ: (409)781-9330 USFWS: (281) 286-8282		

25. Booming Strategy Recommendation Boom should be configured in an exclusion pattern as to prevent oil from entering cuts. Bring sufficient anchors and rope to accomplish task.
--

AERIAL PHOTO

ON SITE PHOTO



29. Prepared By:	30. Reviewed by (PSC)	31. Reviewed by (OSC):
Assignment List	ICS 204 OS (Geographic Response Plan)	Project Updated:

"Response strategies may need to be modified to account for changes due to seasonality, weather conditions, spill characteristics, tides and any other considerations."

1. Incident Name	2. Operational Period (Date/Time)	Assignment List ICS 204-OS
------------------	-----------------------------------	----------------------------

3. Branch	4. Division/Group
-----------	-------------------

5. Operations Personnel	
Operations Section Chief	_____
Branch Director	_____
Division/Group Supervisor	_____

6. Resources Assigned This Period					"X" Indicates 204a attachment with special instructions
Resource Identifier	Leader	Contact Info #	# of Persons	Reporting Info/Notes/Remarks	

7. Assignments

SAFETY NOTE: Commercial and Recreational Vessel traffic, reptiles in area

8. Site Number: 12-B	9. Quad Name Orangefield	10. NOAA Chart # 11343	11. GLO Atlas Page # 12	12. County Orange
-------------------------	-----------------------------	---------------------------	----------------------------	----------------------

13. Site Information: 12-B Site 12-B is two inlets located on the West bank of Cow Bayou approximately 0.5 of a mile from where Cow Bayou empties into the Sabine River. These inlets feed the salt/brackish marsh located North of Sabine Lake.			14. Latitude From: N 30°01'20.30"	To:
			15. Longitude From: W 93°45'38.08"	To:

16. Closest Boat Ramp Peggy's on the Bayou	17. Distance From Ramp 2.5 miles	18. Boat Type Flat Bottom Boat
--	-------------------------------------	-----------------------------------

19. Directions From Local Sector From MSU go north 0.4 miles on Hwy 69 service road to u-turn @ Hwy 365. Travel south on Hwy 69 for 3.1 miles to the clover leaf to Hwy 73 east & travel 4.7 miles & then merge onto Hwy 73/87. Travel 7.4 miles to East Roundbunch Rd./ 1442 & turn right & travel 2.5 miles to Bridge City Bait restaurant/marina on the right.	20. Closest Airport Orange County Airport
	21. Closest Helo Spot Orange County Airport

22. Trustee/Contact Numbers	23. Resources at Risk	24. Width of inlet 724 ft. in ft.
USCG: (409) 723-6509 RRC: (713)869-5001	Atlas Priority Low	25. Water depth in ft. 7 ft.
USCG DUTY: (409) 719-1597 TPWD: (409)892-8666	Environmental Salt/brackish marsh habitat	26. Current Slow
TGLO: (800) 832-8224 NRDA: (512) 463 -9309	Economic Commercial and Residential are	27. No. of Personnel 4
TCEQ: (409)781-9330 USFWS: (281) 286-8282		

25. Booming Strategy Recommendation Boom should be configured in an exclusion pattern as to prevent oil from entering cuts. Bring sufficient anchors and rope to accomplish task.
--

AERIAL PHOTO

ON SITE PHOTO



29. Prepared By:	30. Reviewed by (PSC)	31. Reviewed by (OSC):
Assignment List	ICS 204 OS (Geographic Response Plan)	Project Updated:

"Response strategies may need to be modified to account for changes due to seasonality, weather conditions, spill characteristics, tides and any other considerations."

1. Incident Name	2. Operational Period (Date/Time)	Assignment List ICS 204-OS
------------------	-----------------------------------	----------------------------

3. Branch	4. Division/Group
-----------	-------------------

5. Operations Personnel	_____
Operations Section Chief	_____
Branch Director	_____
Division/Group Supervisor	_____

6. Resources Assigned This Period					"X" Indicates 204a attachment with special instructions
Resource Identifier	Leader	Contact Info #	# of Persons	Reporting Info/Notes/Remarks	

7. Assignments

SAFETY NOTE: Recreational vessel traffic, reptiles in area

8. Site Number: 12-C	9. Quad Name Orangefield	10. NOAA Chart # 11343	11. GLO Atlas Page # 12	12. County Orange
-------------------------	-----------------------------	---------------------------	----------------------------	----------------------

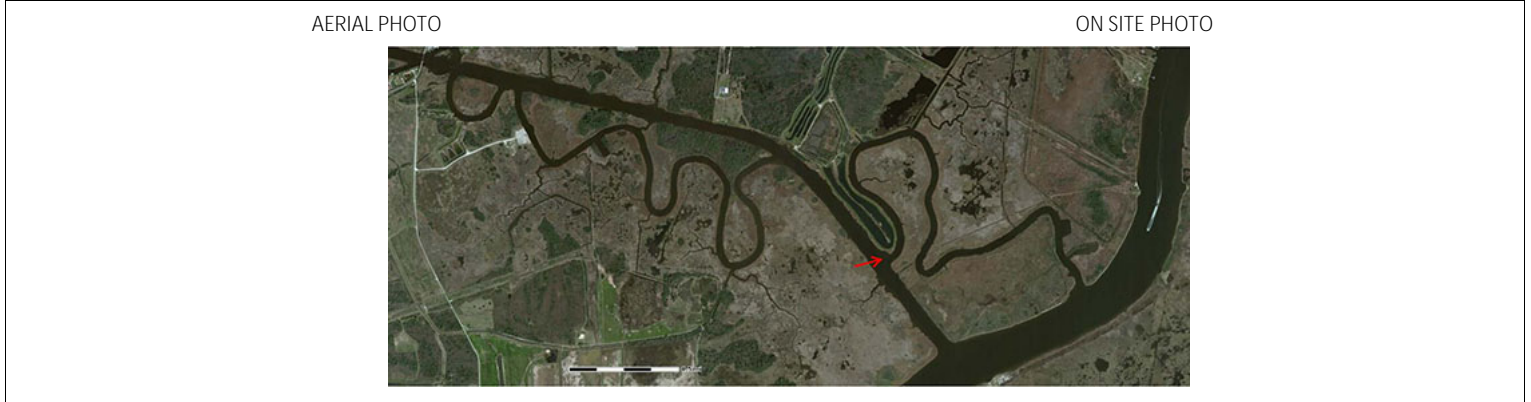
13. Site Information: 12-C Site 12-C is an inlet located on the East bank of Cow Bayou, approximately 0.5 mile West of where Cow Bayou empties into the Sabine River. This inlet is a tributary of Cow Bayou that leads into the Sabine River. Praxair Pipeline 800-926-9620.	14. Latitude From: N 30°01'26.80"	To:	
	15. Longitude From: W 93°45'36.08"	To:	

16. Closest Boat Ramp Peggy's on the Bayou	17. Distance From Ramp 2.25 Miles	18. Boat Type Flat Bottom Boat
--	--------------------------------------	-----------------------------------

19. Directions From Local Sector Site 12-C is an inlet located on the East bank of Cow Bayou, approximately 0.5 mile West of where Cow Bayou empties into the Sabine River. This inlet from MSU go north 0.4 miles on Hwy 69 service road to u-turn @ Hwy 365. Travel south on Hwy 69 for 3.1 miles to the clover leaf to Hwy 73 east & travel 4.7 miles & then merge onto Hwy 73/87. Travel 7.4 miles to East Roundbunch Rd./ 1442 & turn right & travel 2.5 miles to Bridge City Bait restaurant/marina on the right is a tributary of Cow Bayou that leads into the Sabine River.	20. Closest Airport Orange County Airport	21. Closest Helo Spot Orange County Airport
---	--	--

22. Trustee/Contact Numbers	23. Resources at Risk	24. Width of inlet 375 ft. in ft.
USCG: (409) 723-6509 RRC: (713)869-5001	Atlas Priority Low	25. Water depth in ft. 7 ft.
USCG DUTY: (409) 719-1597 TPWD: (409)892-8666	Environmental brackish marsh habitat, threatened osprey, alligator, wading birds	26. Current Slow
TGLO: (800) 832-8224 NRDA: (512) 463 -9309	Economic Commercial and Residential are	27. No. of Personnel 4
TCEQ: (409)781-9330 USFWS: (281) 286-8282		

25. Booming Strategy Recommendation Boom should be configured in an exclusion and or deflection pattern as to prevent oil from entering cuts. Bring sufficient anchors and rope to accomplish task.
--



29. Prepared By:	30. Reviewed by (PSC)	31. Reviewed by (OSC):
Assignment List	ICS 204 OS (Geographic Response Plan)	Project Updated:

"Response strategies may need to be modified to account for changes due to seasonality, weather conditions, spill characteristics, tides and any other considerations."

1. Incident Name	2. Operational Period (Date/Time)	Assignment List ICS 204-OS
------------------	-----------------------------------	----------------------------

3. Branch	4. Division/Group
-----------	-------------------

5. Operations Personnel	
Operations Section Chief	_____
Branch Director	_____
Division/Group Supervisor	_____

6. Resources Assigned This Period "X" Indicates 204a attachment with special instructions

Resource Identifier	Leader	Contact Info #	# of Persons	Reporting Info/Notes/Remarks

7. Assignments

SAFETY NOTE: Commercial and recreational vessel traffic, reptiles in area

8. Site Number: 12-D	9. Quad Name Orangefield	10. NOAA Chart # 11343	11. GLO Atlas Page # 12	12. County Orange
-------------------------	-----------------------------	---------------------------	----------------------------	----------------------

13. Site Information: 12-D Site 12-D is a winding inlet located on the West bank of Cow Bayou approximately 1.25 miles from where Cow Bayou empties into the Sabine River. This inlet curves several times and then leads back into Cow Bayou approximately ¾ of a mile North of this location. See Site 2-E. The banks of this inlet consist of brackish marsh flora and fauna. Bayer Inc. has a private boat ramp (pictured above) located approximately 300 feet northwest and across the Bayou from this inlet. To gain road access to Bayer Inc. private boat launch you would take Hwy 69/96 South to Hwy 73 East. Take FM 1006/Chemical Road to the small paved road located between Bayer Inc and Print Pac. This road will bring you to the boat launch.	14. Latitude From: N 30°01'50.2"	To:	
	15. Longitude From: W 93°46'08.80"	To:	

16. Closest Boat Ramp Peggy's on the Bayou	17. Distance From Ramp 1.5 Miles	18. Boat Type Flat Bottom Boat
---	-------------------------------------	-----------------------------------

19. Directions From Local Sector From MSU go north 0.4 miles on Hwy 69 service road to u-turn @ Hwy 365. Travel south on Hwy 69 for 3.1 miles to the clover leaf to Hwy 73 east & travel 4.7 miles & then merge onto Hwy 73/87. Travel 7.4 miles to East Roundbunch Rd./ 1442 & turn right & travel 2.5 miles to Bridge City Bait restaurant/marina on the right.	20. Closest Airport Orange County Airport
	21. Closest Helo Spot Orange County Airport

22. Trustee/Contact Numbers USCG: (409) 723-6509 RRC: (713)869-5001 USCG DUTY: (409) 719-1597 TPWD: (409)892-8666 TGLO: (800) 832-8224 NRDA: (512) 463 -9309 TCEQ: (409)781-9330 USFWS: (281) 286-8282	23. Resources at Risk Atlas Priority Low Environmental Salt/brackish marsh habitat, threatened osprey, alligator, wading birds Economic Commercial and Residential	24. Width of inlet 320 ft. in ft. 25. Water depth in ft. 7 ft. 26. Current Slow 27. No. of Personnel 4
--	---	---

25. Booming Strategy Recommendation Boom should be configured in an exclusion and or deflection pattern as to prevent oil from entering cuts. Bring sufficient anchors and rope to accomplish task.
--

AERIAL PHOTO

ON SITE PHOTO



29. Prepared By:	30. Reviewed by (PSC)	31. Reviewed by (OSC):
Assignment List	ICS 204 OS (Geographic Response Plan)	Project Updated:

"Response strategies may need to be modified to account for changes due to seasonality, weather conditions, spill characteristics, tides and any other considerations."

1. Incident Name	2. Operational Period (Date/Time)	Assignment List ICS 204-OS
------------------	-----------------------------------	----------------------------

3. Branch	4. Division/Group
-----------	-------------------

5. Operations Personnel	_____
Operations Section Chief	_____
Branch Director	_____
Division/Group Supervisor	_____

6. Resources Assigned This Period					"X" Indicates 204a attachment with special instructions
Resource Identifier	Leader	Contact Info #	# of Persons	Reporting Info/Notes/Remarks	

7. Assignments

SAFETY NOTE: Commercial and recreational vessel traffic, reptiles in area

8. Site Number: 12-E	9. Quad Name Orangefield	10. NOAA Chart # 11343	11. GLO Atlas Page # 12	12. County Orange
-------------------------	-----------------------------	---------------------------	----------------------------	----------------------

13. Site Information: 12-E Site 12-E consists of 6 inlets located on the East and West bank of Cow Bayou approximately 1 miles East of East Round Bunch Rd Bridge by Peggy's on the Bayou. This site is located just Southeast of Mule Island. The banks consist of brackish marsh flora and fauna. Peggy's on the Bayou 409-886-1115. Burton Shipyard, Inc. 409-735-8250.	14. Latitude From: N 30°02'10"	To:	
	15. Longitude From: W 93°47'36"	To:	

16. Closest Boat Ramp Peggy's on the Bayou	17. Distance From Ramp 1 Mile	18. Boat Type Flat Bottom Boat
---	----------------------------------	-----------------------------------

19. Directions From Local Sector From MSU go north 0.4 miles on Hwy 69 service road to u-turn @ Hwy 365. Travel south on Hwy 69 for 3.1 miles to the clover leaf to Hwy 73 east & travel 4.7 miles & then merge onto Hwy 73/87. Travel 7.4 miles to East Roundbunch Rd./ 1442 & turn right & travel 2.5 miles to Bridge City Bait restaurant/marina on the right.	20. Closest Airport Orange County Airport
	21. Closest Helo Spot Orange County Airport

22. Trustee/Contact Numbers	23. Resources at Risk	24. Width of inlet 60 ft. in ft.
USCG: (409) 723-6509 RRC: (713) 869-5001	Atlas Priority Medium	25. Water depth in ft. 7 ft.
USCG DUTY: (409) 719-1597 TPWD: (409) 892-8666	Environmental Salt/brackish marsh habitat, threatened osprey, alligator, wading birds	26. Current Slow
TGLO: (800) 832-8224 NRDA: (512) 463 -9309	Economic Commercial and Residential are	27. No. of Personnel 4
TCEQ: (409) 781-9330 USFWS: (281) 286-8282		

25. Booming Strategy Recommendation Boom should be configured in an exclusion and or deflection pattern as to prevent oil from entering cuts. Bring sufficient anchors and rope to accomplish task.
--

AERIAL PHOTO

ON SITE PHOTO



29. Prepared By:	30. Reviewed by (PSC)	31. Reviewed by (OSC):
Assignment List	ICS 204 OS (Geographic Response Plan)	Project Updated:

"Response strategies may need to be modified to account for changes due to seasonality, weather conditions, spill characteristics, tides and any other considerations."

1. Incident Name	2. Operational Period (Date/Time)	Assignment List ICS 204-OS
------------------	-----------------------------------	----------------------------

3. Branch	4. Division/Group
-----------	-------------------

5. Operations Personnel	
Operations Section Chief	_____
Branch Director	_____
Division/Group Supervisor	_____

6. Resources Assigned This Period						"X" Indicates 204a attachment with special instructions
Resource Identifier	Leader	Contact Info #	# of Persons	Reporting Info/Notes/Remarks		

7. Assignments

SAFETY NOTE: Commercial and recreational vessel traffic, reptiles in area

8. Site Number: 12-F	9. Quad Name Orangefield	10. NOAA Chart # 11343	11. GLO Atlas Page # 12	12. County Orange
-------------------------	-----------------------------	---------------------------	----------------------------	----------------------

13. Site Information: 12-F Site 12-F consists of the oxbow leading to Burton's Shipyard and the adjacent boat slip. This site is located on the West bank of Cow Bayou, just north of Leblanc's Marina. This oxbow is shallow in places with submerged structures that may damage a boat. There is a small private boat launch located near this site. There are several water front homes in this area that may require attention. Burton Shipyard, Inc. 409-735-8250.	14. Latitude From: N 30°02'12.51"	To:	
	15. Longitude From: W 93°47'48.41"	To:	

16. Closest Boat Ramp Peggy's on the Bayou	17. Distance From Ramp 0.25 Mile	18. Boat Type Flat Bottom Boat
---	-------------------------------------	-----------------------------------

19. Directions From Local Sector From MSU go north 0.4 miles on Hwy 69 service road to u-turn @ Hwy 365. Travel south on Hwy 69 for 3.1 miles to the clover leaf to Hwy 73 east & travel 4.7 miles & then merge onto Hwy 73/87. Travel 7.4 miles to East Roundbunch Rd./ 1442 & turn right & travel 2.5 miles to Bridge City Bait restaurant/marina on the right.	20. Closest Airport Orange County Airport
	21. Closest Helo Spot Orange County Airport

22. Trustee/Contact Numbers	23. Resources at Risk	24. Width of inlet North Inlet 253', South Inlet 284' in ft.
USCG: (409) 723-6509 RRC: (713)869-5001	Atlas Priority Medium	25. Water depth in ft. 7 ft.
USCG DUTY: (409) 719-1597 TPWD: (409)892-8666	Environmental Intermediate marsh habitat, threatened osprey, alligator, and wading birds	26. Current Slow
TGLO: (800) 832-8224 NRDA: (512) 463 -9309	Economic Commercial and Recreational	27. No. of Personnel 4
TCEQ: (409)781-9330 USFWS: (281) 286-8282		

25. Booming Strategy Recommendation Boom should be configured in an exclusion and or deflection pattern as to prevent oil from entering cuts. Bring sufficient anchors and rope to accomplish task.
--

AERIAL PHOTO

ON SITE PHOTO



29. Prepared By:	30. Reviewed by (PSC)	31. Reviewed by (OSC):
Assignment List	ICS 204 OS (Geographic Response Plan)	Project Updated:

"Response strategies may need to be modified to account for changes due to seasonality, weather conditions, spill characteristics, tides and any other considerations."

1. Incident Name	2. Operational Period (Date/Time)	Assignment List ICS 204-OS
------------------	-----------------------------------	----------------------------

3. Branch	4. Division/Group
-----------	-------------------

5. Operations Personnel	
Operations Section Chief	_____
Branch Director	_____
Division/Group Supervisor	_____

6. Resources Assigned This Period						"X" Indicates 204a attachment with special instructions
Resource Identifier	Leader	Contact Info #	# of Persons	Reporting Info/Notes/Remarks		

7. Assignments

SAFETY NOTE: Shallow, submerged stumps and logs, reptiles in area

8. Site Number: 12-G	9. Quad Name Orangefield	10. NOAA Chart # 11343	11. GLO Atlas Page # 12	12. County Orange
-------------------------	-----------------------------	---------------------------	----------------------------	----------------------

13. Site Information: 12-G Site 12-G is a series of 13 inlets located on both the East and West banks of Cow Bayou. These inlets begin just North of East Round Bunch Rd Bridge. Cow Bayou's banks, at this location, hosts a variety of shoreline types. This section is primarily a residential and commercial area. Peggy's on the Bayou 409-886-1115. Knife River 409-792-9981.	14. Latitude From: N 30°02'17.90"	To:	
	15. Longitude From: W 93°47'56.91"	To:	

16. Closest Boat Ramp Peggy's on the Bayou	17. Distance From Ramp 0.25 Miles	18. Boat Type Flat Bottom Boat
---	--------------------------------------	-----------------------------------

19. Directions From Local Sector From MSU go north 0.4 miles on Hwy 69 service road to u-turn @ Hwy 365. Travel south on Hwy 69 for 3.1 miles to the clover leaf to Hwy 73 east & travel 4.7 miles & then merge onto Hwy 73/87. Travel 7.4 miles to East Roundbunch Rd./ 1442 & turn right & travel 2.5 miles to Bridge City Bait restaurant/marina on the right.	20. Closest Airport Orange County Airport
	21. Closest Helo Spot Orange County Airport

22. Trustee/Contact Numbers	23. Resources at Risk	24. Width of inlet 14 Inlets None over 400' in ft.
USCG: (409) 723-6509 RRC: (713)869-5001	Atlas Priority Medium	25. Water depth in ft. 5-10'
USCG DUTY: (409) 719-1597 TPWD: (409)892-8666	Environmental Brackish/freshwater marsh habitat, threatened osprey, alligator, wading birds	26. Current Slow
TGLO: (800) 832-8224 NRDA: (512) 463 -9309	Economic Residential and commercial area	27. No. of Personnel 4
TCEQ: (409)781-9330 USFWS: (281) 286-8282		

25. Booming Strategy Recommendation Boom should be configured in an exclusion and or deflection pattern as to prevent oil from entering cuts. Bring sufficient anchors and rope to accomplish task.
--



29. Prepared By:	30. Reviewed by (PSC)	31. Reviewed by (OSC):
Assignment List	ICS 204 OS (Geographic Response Plan)	Project Updated:

"Response strategies may need to be modified to account for changes due to seasonality, weather conditions, spill characteristics, tides and any other considerations."

1. Incident Name	2. Operational Period (Date/Time)	Assignment List ICS 204-OS
------------------	-----------------------------------	----------------------------

3. Branch	4. Division/Group
-----------	-------------------

5. Operations Personnel	
Operations Section Chief	_____
Branch Director	_____
Division/Group Supervisor	_____

6. Resources Assigned This Period						"X" Indicates 204a attachment with special instructions
Resource Identifier	Leader	Contact Info #	# of Persons	Reporting Info/Notes/Remarks		

7. Assignments

SAFETY NOTE: Shallow, submerged stumps and logs, reptiles in area

8. Site Number: 12-H	9. Quad Name Orange Field	10. NOAA Chart # 11343	11. GLO Atlas Page # 12	12. County Orange
-------------------------	------------------------------	---------------------------	----------------------------	----------------------

13. Site Information: 12-H Site 12-H consists of a series of inlets on Cow Bayou located on the East and West bank. These inlets are located North of Hwy 87 up to FM 105 on Cow Bayou. The banks of the Bayou consist of freshwater swamp/marsh. There are residential areas scattered along the banks. This part of the Bayou is popular for recreational traffic in the summer months. Knife River 409-792-9981.	14. Latitude From: N 30°03'24	To:	
	15. Longitude From: W 93°50'08	To:	

16. Closest Boat Ramp Sabine River Authority Cow Bayou Boat Ramp	17. Distance From Ramp 0.25 Miles	18. Boat Type Flat Bottom Boat
---	--------------------------------------	-----------------------------------

19. Directions From Local Sector From MSU go north 0.4 miles on Hwy 69 service road to u-turn @ Hwy 365. Travel south on Hwy 69 for 3.1 miles to the clover leaf to Hwy 73 east & travel 4.7 miles & then merge onto Hwy 73/87. Travel 7.9 miles on Hwy. 87 through Bridge City and over the Cow Bayou ridge. Take an immediate left turn across Hwy. 87 into the boat ramp after crossing the Cow Bayou Bridge.	20. Closest Airport Orange County	21. Closest Helo Spot Orange County
---	--------------------------------------	--

22. Trustee/Contact Numbers	23. Resources at Risk	24. Width of inlet 10 Inlets None over 470' in ft.
USCG: (409) 723-6509 RRC: (713)869-5001	Atlas Priority Low	25. Water depth in ft. 1-10 ft.
USCG DUTY: (409) 719-1597 TPWD: (409)892-8666	Environmental Brackish/Freshwater marsh habitat, threatened osprey, alligator, wading birds	26. Current Slow
TGLO: (800) 832-8224 NRDA: (512) 463 -9309	Economic Residential area	27. No. of Personnel 4
TCEQ: (409)781-9330 USFWS: (281) 286-8282		

25. Booming Strategy Recommendation Boom should be configured in an exclusion and or deflection pattern as to prevent oil from entering cuts. Bring sufficient anchors and rope to accomplish task.
--



29. Prepared By:	30. Reviewed by (PSC)	31. Reviewed by (OSC):
Assignment List	ICS 204 OS (Geographic Response Plan)	Project Updated:

"Response strategies may need to be modified to account for changes due to seasonality, weather conditions, spill characteristics, tides and any other considerations."